

# ABB BALDOR RELIANCE III

---

## Customer information packet

JMFSWDM3613T-E

5HP, 3500RPM, 3PH, 60HZ, 184JM, 3634M, TEFC, F1

Class - None

Division - Not Applicable

**Specifications**

<b>Enclosure</b>	TEFC
<b>Frame</b>	184JM
<b>Frame Material</b>	Stainless Steel
<b>Frequency</b>	60.00 Hz
<b>Haz Area Class and Group</b>	None
<b>Haz Area Division</b>	Not Applicable
<b>Motor Letter Type</b>	Three Phase
<b>Output @ Frequency</b>	5.000 HP @ 60 HZ
<b>Phase</b>	3
<b>Synchronous Speed @ Frequency</b>	3600 RPM @ 60 HZ
<b>Voltage @ Frequency</b>	230.0 V @ 60 HZ 460.0 V @ 60 HZ
<b>Ambient Temperature</b>	40 °C
<b>Auxiliary Box</b>	NO AUXILLARY BOX
<b>Auxiliary Box Lead Termination</b>	None
<b>Base Indicator</b>	Rigid
<b>Bearing Grease Type</b>	Polyrex EM (-20F +300F)
<b>Blower</b>	None
<b>Current @ Voltage</b>	11.200 A @ 230.0 V 12.000 A @ 208.0 V 5.600 A @ 460.0 V
<b>Design Code</b>	B
<b>Drip Cover</b>	No Drip Cover
<b>Duty Rating</b>	CONT
<b>Efficiency @ 100% Load</b>	89.5 %
<b>Electrically Isolated Bearing</b>	Not Electrically Isolated
<b>Feedback Device</b>	NO FEEDBACK
<b>Front Face Code</b>	Standard
<b>Front Shaft Indicator</b>	None
<b>Heater Indicator</b>	No Heater
<b>High Voltage Full Load Amps</b>	5.6 a
<b>Insulation Class</b>	H

**Part Detail**

<b>Revision</b>	P
<b>Type</b>	AC
<b>Mech. spec.</b>	36R563
<b>Base</b>	
<b>Status</b>	PRD/A
<b>Elec. spec.</b>	36WGT149
<b>Layout</b>	36LYR563
<b>Eff. date</b>	11-12-2025
<b>CD Diagram</b>	CD0005
<b>Poles</b>	02
<b>Leads</b>	9#16,0#,0#,0# Y
<b>Proprietary</b>	False
<b>Created date</b>	08-18-2017

<b>Inverter Code</b>	Inverter Ready
<b>KVA Code</b>	L
<b>Lifting Lugs</b>	Standard Lifting Lugs
<b>Locked Bearing Indicator</b>	Locked Bearing
<b>Motor Lead Exit</b>	Ko Box
<b>Motor Lead Quantity/Wire Size</b>	@ AWG 9 @ 16 AWG
<b>Motor Lead Termination</b>	Flying Leads
<b>Motor Standards</b>	NEMA
<b>Motor Type</b>	3634M
<b>Mounting Arrangement</b>	F1
<b>Number of Poles</b>	2
<b>Overall Length</b>	18.22 IN
<b>Power Factor</b>	95
<b>Product Family</b>	WD All SS Encapsulated
<b>Pulley End Bearing Type</b>	Sealed Bearing
<b>Pulley Face Code</b>	C-Face
<b>Pulley Shaft Indicator</b>	Standard
<b>Rodent Screen</b>	None
<b>RoHS Status</b>	ROHS COMPLIANT
<b>Service Factor</b>	1.15
<b>Shaft Diameter</b>	0.875 IN
<b>Shaft Extension Location</b>	Pulley End
<b>Shaft Ground Indicator</b>	No Shaft Grounding
<b>Shaft Rotation</b>	Reversible
<b>Shaft Slinger Indicator</b>	Shaft Slinger
<b>Speed</b>	3500 rpm
<b>Speed Code</b>	Single Speed
<b>Starting Method</b>	Direct on line
<b>Thermal Device - Bearing</b>	None
<b>Thermal Device - Winding</b>	None
<b>Vibration Sensor Indicator</b>	No Vibration Sensor
<b>Winding Thermal 1</b>	None
<b>Winding Thermal 2</b>	None

**Nameplate**

<b>NP4427AAA01</b>											
<b>CAT #</b>	JMFSWDM3613T-E				<b>WT</b>	81	<b>LBS</b>				
<b>SPEC</b>	36R563T149G1				<b>ENCL</b>	TEFC					
<b>SER #</b>					<b>CC</b>	010A	<b>IP</b>	69			
<b>HP</b>	5	<b>MAG CUR</b>			3.4/1.7						
<b>VOLTS</b>	230/460				<b>NEMA NOM. EFF</b>			89.5			
<b>AMPS</b>	11.2/5.6				<b>PF</b>	95					
<b>RATING</b>	40C AMB-CONT										
<b>RPM</b>	3500				<b>MAX RPM</b>		5400				
<b>FRAME</b>	184JM	<b>HZ</b>	60		<b>CODE</b>	L	<b>CLASS</b>	H			
<b>SER.F.</b>	1.15	<b>SF AMP</b>	12.8/6.4			<b>PH</b>	3	<b>DES</b>	B		
<b>DE</b>	6207		<b>ODE</b>	6206							
<b>LUBRICATION</b>	POLYREX EM										
<b>ID LOGO</b>	<b>INVERTER TYPE</b>			<b>VPWM</b>	<b>CHP</b>	60	<b>TO</b>	90	1.5:1		
<b>ID LOGO</b>	<b>WK2</b>	0.15	<b>CT</b>	15	<b>TO</b>	60	4:1				
<b>ID LOGO</b>	<b>SL HZ</b>	1.7	<b>VT</b>	0-	<b>TO</b>	60	1000:1				
<b>YR</b>					<b>QR</b>						

**Parts List**

<b>Part number</b>	<b>Description</b>	<b>Quantity</b>
SA348859	SA 36R563T149G1	1.000 ea
RA337444	RA 36R563T149G1	1.000 ea
36FN3000C01SP	EXFN, PLASTIC, 5.25 OD, .912 ID	1.000 ea
35CB1017A02	5/36 MID SECT - 3 PC. CONDUIT BOX 3/4 N	1.000 ea
11XW1032G08	10-32 X .50, TAPTITE II, HEX WSHR SLTD U	1.000 ea
HW3001B01	BRASS CUP WASHER, FOR #10 SCREW	1.000 ea
36EP1920A02	FREP TEFC 206 BRG WD11/12 (STAINLESS)	1.000 ea
RM1070A42	O-RING,(#70-7.239) FLOUROELASTOMER COMPO	1.000 ea
HW4600G02	30 X 47 X 8 LIP SEAL, GRAPHITE INFUSED V	1.000 ea
HW4600F25	30 X 48 X 4.5 AFX SEAL, GRAPHITE INFUSED	1.000 ea
HW4500S33	1/8 NPT STAINLESS #304 SS PLUG	4.000 ea
HW5100A06	W2420-025 WVY WSHR (WB)	1.000 ea
36EP1926A02	PUEP 182-4C ENCL 207 BRG WD11/12 (STAINL	1.000 ea
RM1070A42	O-RING,(#70-7.239) FLOUROELASTOMER COMPO	1.000 ea
HW4600F35	35 X 52 X 8 LIP SEAL, GRAPHITE INFUSED V	1.000 ea
HW4600F79	35 X 52 X 4.5 AFS SEAL, GRAPHITE INFUSED	1.000 ea
HW4500S33	1/8 NPT STAINLESS #304 SS PLUG	4.000 ea
RM1070A14	O-RING, -010 VITON/FKM .070CS X .239ID	4.000 ea
11XB1214S16	12-14X1.00 HXWSSLD TYP B STAINLESS	1.000 ea
36FH4007	FAN COVER #304 STAINLESS W/OUT GREASER	1.000 ea
10XN1032FS06	HEX HD CAP SCREW 10-32 X 3/8 SS FOOD SAF	3.000 ea
35CB1513A01	35-36-37 MACH. LID - 3 PC. CONDUIT BOX	1.000 ea
RM1070A81	O-RING, -043 VITON/FKM .070CS X 3.489ID	1.000 ea
HA3424S48	STUD - M6X1.0 THDS X 3.00"	1.000 ea
RM1070A81	O-RING, -043 VITON/FKM .070CS X 3.489ID	1.000 ea
HW2502D13	SS KEY, 3/16 SQ X 1.375	1.000 ea
HA7000A01	KEY RETAINER 7/8" DIA SHAFT	1.000 ea
MJ5001A27	32220KN GRAY SEALER *MIN BUY 4 QTS=1GAL	0.005 qt
MJ5004A93	FOOD GRADE (H1 RATED) ANTISEIZE THRD COM	0.005 ea
HA1025A21	WSHR,FELT .125" THK	1.000 ea
HA5027A09	DRAIN KIT,(2)HA4002A03 BAGGED W/LABEL	1.000 ea

MJ1000A02	GREASE, POLYREX EM EXXON	0.050 lb
WD5603A01	KIT, CLOSED-END LEAD SPLICE (18-14GA)	1.000 ea
HA3101FS42	THRUBOLT, 1/4-20 X 11.500 SS FOOD SAFE	4.000 ea
GOPA1000	PKG GRP, PRINT PK1026A06	1.000 ea
MN416A01	TAG-INSTAL-MAINT no wire (2500 bx)11/25	1.000 ea
FE-0000016	ZTRG FE ASSEMBLY	1.000 ea
PE-0000010	ZRTG PE ASSEMBLY	1.000 ea

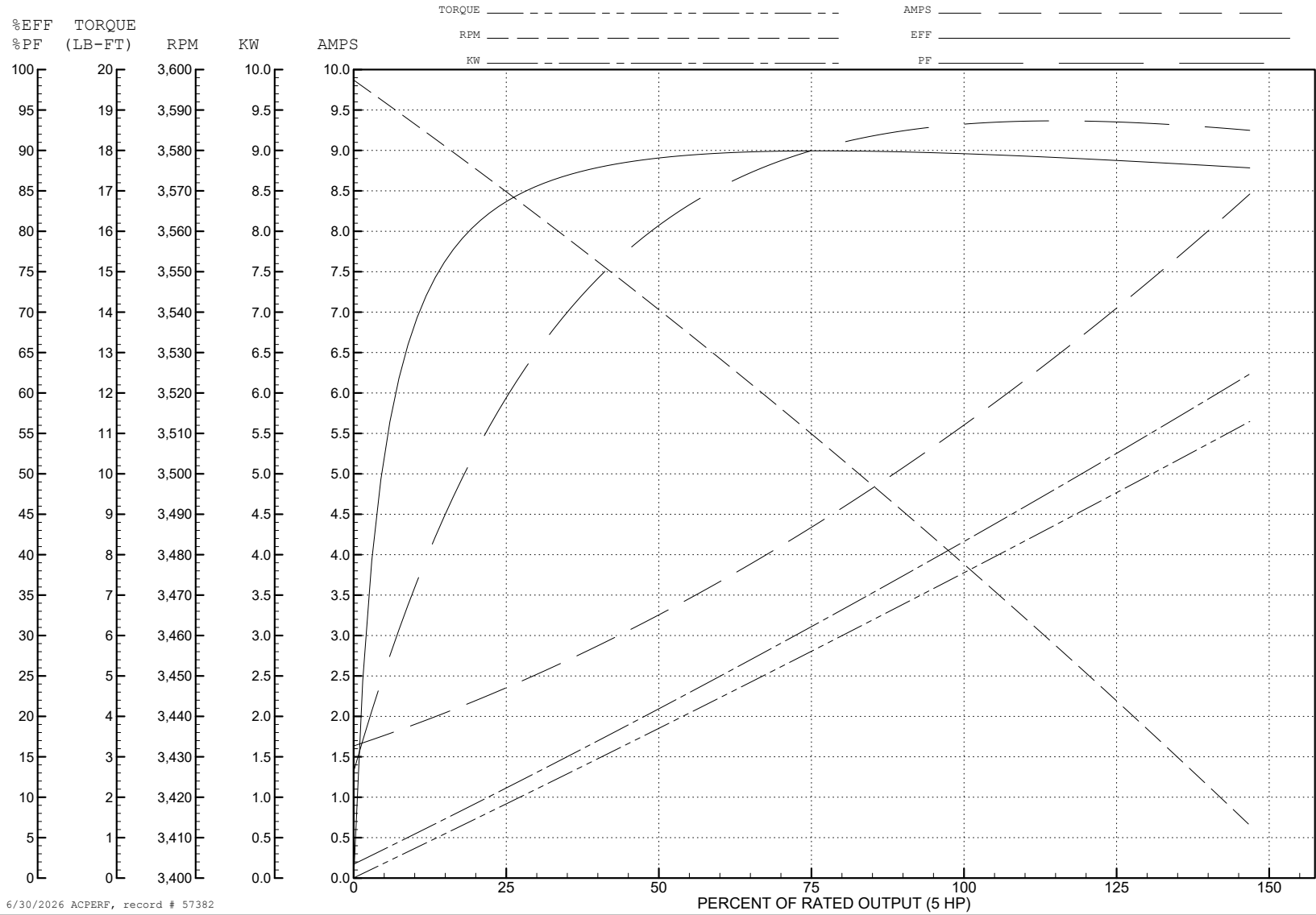
ABB Motors and Mechanical Inc.

WINDING # 36WGT149

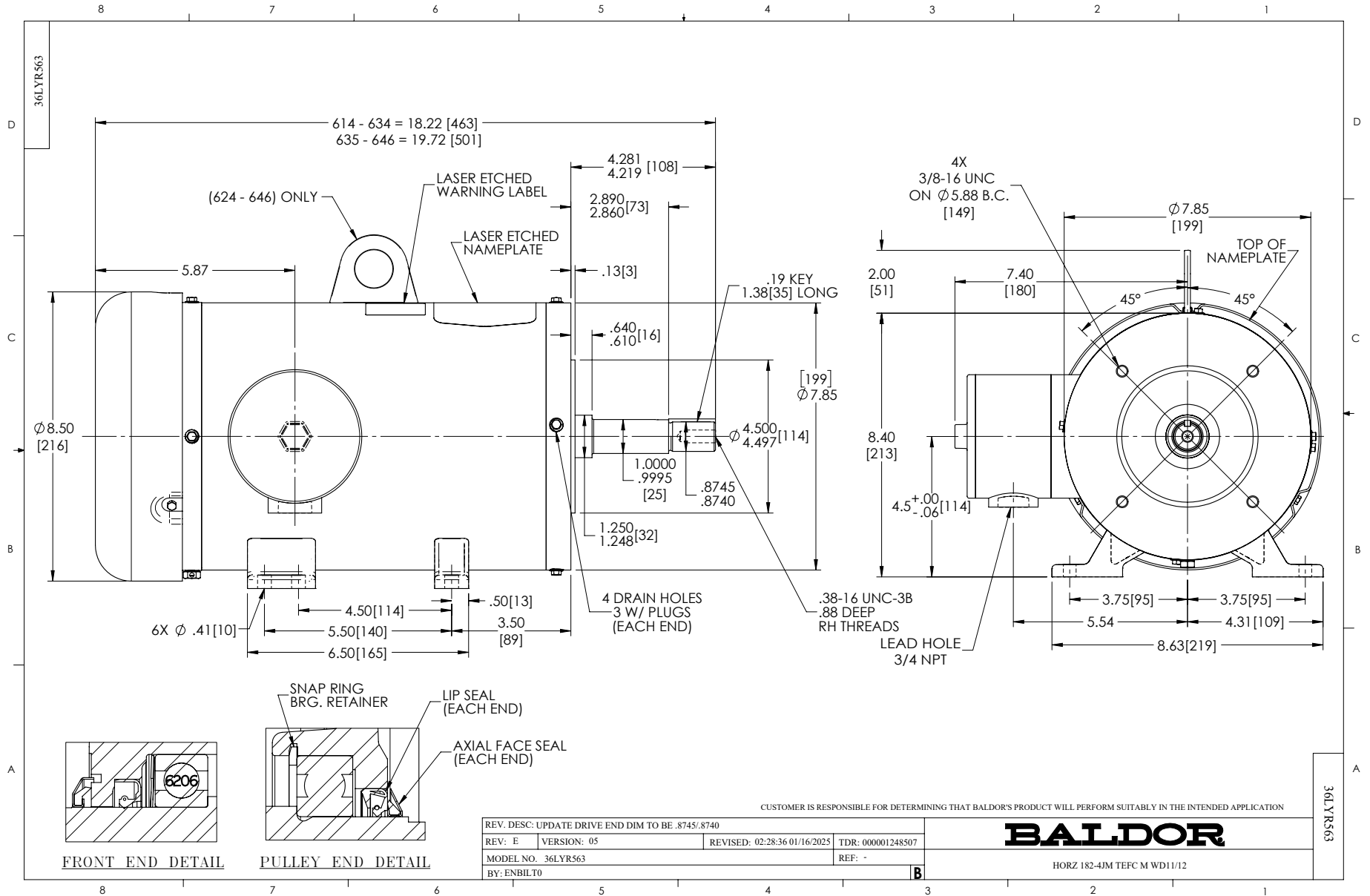
Typical performance - not guaranteed values.

5 HP 3 PH 60 HZ 3500 RPM 460 V 3634M

TORQUES (LB-FT): PO=39 PU=28 LR=31 LRA=62.5



6/30/2026 ACPERF, record # 57382



CD0005



LOW VOLTAGE  
(2Y)



LINE

HIGH VOLTAGE  
(1Y)



LINE

NOTES:

1. INTERCHANGE ANY TWO LINE LEADS TO REVERSE ROTATION.
2. OPTIONAL THERMOSTATS ARE PROVIDED WHEN SPECIFIED.
3. ACTUAL NUMBER OF INTERNAL PARALLEL CIRCUITS MAY BE A MULTIPLE OF THOSE SHOWN ABOVE.
4. LEAD COLORS ARE OPTIONAL. LEADS MUST ALWAYS BE NUMBERED AS SHOWN.

CD0005

REV. DESC: REVISE TO SHOW OPTIONAL COLORS

REV. LTR: E BY: JLP REVISED: 01/19/99 10:15 TDR: 0171435

500000

FILE: AAA00005140

MDL: -

MTL: -

**BALDOR ELECTRIC Co.**

3PH, DV, 9 LEADS