

BALDOR • RELIANCE

Customer information packet

JMFSWDM41906T-E

20HP, 3540RPM, 3PH, 60HZ, 256JM, TEFC, F1

Class - None

Division - Not Applicable

Copyright © All product information within this document is subject to ABB Motors and Mechanical Inc. copyright © protection, unless otherwise noted.

3/1/2024 5:15:39 PM

Specifications

Enclosure	TEFC
Frame	256JM
Frame Material	Stainless Steel
Frequency	60.00 Hz
Motor Letter Type	Three Phase
Output @ Frequency	20.000 HP @ 60 HZ
Phase	3
Synchronous Speed @ Frequency	3600 RPM @ 60 HZ
Voltage @ Frequency	230.0 V @ 60 HZ 460.0 V @ 60 HZ
XP Class and Group	None
XP Division	Not Applicable
Agency Approvals	CSA UR NEMA PREMIUM
Ambient Temperature	40 °C
Auxillary Box	No Auxillary Box
Auxillary Box Lead Termination	None
Base Indicator	Rigid
Bearing Grease Type	POLYREX SHC102 EM (-20F +356F)
Blower	None
Current @ Voltage	46.000 A @ 230.0 V 23.000 A @ 460.0 V
Design Code	A
Drip Cover	No Drip Cover
Duty Rating	CONT
Efficiency @ 100% Load	91.0 %
Electrically Isolated Bearing	Not Electrically Isolated
Feedback Device	NO FEEDBACK
Heater Indicator	No Heater
High Voltage Full Load Amps	23.0 a
Insulation Class	H

Part detail

Revision	P
Type	AC
Mech. spec.	
Base	
Status	PRD/A
Elec. spec.	39WGY419
Layout	39LYE754
Eff. date	12-07-2020
CD Diagram	CD0005
Poles	02
Leads	9#10
Proprietary	False
Created date	12-18-2019

Inverter Code	Inverter Duty
KVA Code	K
Lifting Lugs	Standard Lifting Lugs
Locked Bearing Indicator	Locked Bearing
Motor Lead Termination	Flying Leads
Motor Standards	NEMA
Motor Type	3960M
Mounting Arrangement	F1
Number of Poles	2
Overall Length	26.68 IN
Power Factor	90
Product Family	WD All SS Encapsulated
Pulley Face Code	C-Face
Rodent Screen	None
Service Factor	1.00
Shaft Diameter	1.250 IN
Shaft Ground Indicator	No Shaft Grounding
Shaft Rotation	Reversible
Speed	3540 rpm
Speed Code	Single Speed
Starting Method	Direct on line
Thermal Device - Bearing	None
Thermal Device - Winding	None
Vibration Sensor Indicator	No Vibration Sensor
Winding Thermal 1	None
Winding Thermal 2	None

Nameplate

NP1953L01										
CAT.NO.	JMFSWDM41906T-E									
SPEC.	39-0000-0236									
HP	20									
VOLTS	230/460									
AMPS	46/23									
R.P.M.	3540									
FRAME	256JM	HZ	60	PH	3					
SER.F.	1.00	CODE	K	DES.	A	CLASS	H			
NEMA NOM. EFF.	91	P.F.	90							
RATING	40C AMB-CONT									
CC	010A	USABLE AT 208V	N/A							
DE	6309	ODE	6309							
ENCL	TEFC	SN								
	2:1 VT/10:1 VT									

Parts list

Part number	Description	Quantity
SA377349	SA 39-0000-0236	1.000 ea
RA367266	RA 39-0000-0236	1.000 ea
WD5603A01	KIT, CLOSED-END LEAD SPLICE (18-14GA)	1.000 ea
MN416A01	TAG-INSTAL-MAINT no wire (2100bx)4/22	1.000 ea
39FH4004A01	304 SS FANCOVER SPUN W/SLOTS & MTG(POLIS	1.000 ea
10XN2520FS08	HEX HD CAP SCREW 1/4-20 X 1/2 SS FOOD SA	3.000 ea
HW1001S25	WASHER, 1/4 SPLT LK, STAINLESS STEEL	3.000 ea
37FN3002C02	EXFN, PLASTIC, 6.00 OD, 1.503 ID	1.000 ea
HW2502F08	KEY, 5/16 SQ X .875 303 SS	1.000 ea
51XB1214S20	12-14X1.25 HXWSSLD SERTYB, SS	1.000 ea
MJ1000A107	GREASE, MOBIL SHC POLYREX 102 EM	0.080 lb
HA3105FS14	THRUBOLT, 3/8-16 X 17.250 SS FOOD SAFE	4.000 ea
RM1070A78	O-RING, -012 VITON/FKM .070CS X .364ID	4.000 ea
39EP1904A02	FREP ENCL 309 BRG (STAINLESS) POLISHED	1.000 ea
HW4600F81	45 X 68 X 10 LIP SEAL, GRAPHITE INFUSED	1.000 ea
HW4600F80	45 X 62 X 4.5 AFS SEAL, GRAPHITE INFUSED	1.000 ea
LD7020E09	LEAD SET, 10AWG, 9 LEAD, 20" LONG LEADS	1.000 ea
HW5100A11	W3917-042 WVY WSHR (WB)	1.000 ea
HW4500S33	1/8 NPT STAINLESS #304 SS PLUG	3.000 ea
HA4002A03	#304 S.S. DRAIN FITTING, .125 NPT (.44 H	1.000 ea
HA4002A03	#304 S.S. DRAIN FITTING, .125 NPT (.44 H	1.000 ea
RM1070A80	O-RING, VITON/FKM .070CS X 10.800ID	1.000 ea
39EP1905A01	PUEP ENCL 309 BRG (STAINLESS) POLISHED	1.000 ea
HW4600F80	45 X 62 X 4.5 AFS SEAL, GRAPHITE INFUSED	1.000 ea
39CB1001A01	39 MID-SECTION, - 3PC. BOX W/5.75-12 THD	1.000 ea
10XN2520S10	1/4-20X 5/8 HEX HD CAP SS	4.000 ea
HW4600F81	45 X 68 X 10 LIP SEAL, GRAPHITE INFUSED	1.000 ea
HW4500S33	1/8 NPT STAINLESS #304 SS PLUG	3.000 ea
RM1070A80	O-RING, VITON/FKM .070CS X 10.800ID	1.000 ea
RM1070A79	O-RING, -051 VITON/FKM .070CS X 5.489ID	1.000 ea
WD1000B16	T&B CX70TN OR L70P TERMINAL LUG	1.000 ea

10XN2520S08	SCREW, 1/4-20 X 1/2 HHCS SS	1.000 ea
39CB1500A01	39 LID, 3 PC. BOX STAINLESS (POLISHED)	1.000 ea
RM1070A79	O-RING, -051 VITON/FKM .070CS X 5.489ID	1.000 ea
40PA1000	PACKAGING GROUP	1.000 ea
HW2502E18	#303 SS,SQ KEY 1/4 X 2.000	1.000 ea
MJ5004A93	FOOD GRADE (H1 RATED) ANTISEIZE THRD COM	0.005 ea
MJ5000A09	EFI KIT #1578 (400 ML CARTRIDGE OF EFI	0.200 ea
HA5027A07	85XU1208S08 FACE DRAIN PINS BAGGED	1.000 ea
FE-0000013	ZRTG FE ASSEMBLY	1.000 ea
PE-0000003	ZRTG PE ASSEMBLY	1.000 ea
LB1624	COMBINED WARNING LABEL, ISO/ANSI PICTOGR	1.000 ea
HA1025A03	FELT WSH 2.1875 OD X 1.170 ID X .25 #321	8.000 ea

AC Induction Motor Performance Data

Record # 80272

Typical performance - not guaranteed values

Winding: 39WGY419-R001		Type: 3960M	Enclosure: TEFC		
Nameplate Data			460 V, 60 Hz: High Voltage Connection		
Rated Output (HP)	20	Full Load Torque	29.8 LB-FT		
Volts	230/460	Start Configuration	direct on line		
Full Load Amps	46/23	Breakdown Torque	161 LB-FT		
R.P.M.	3540	Pull-up Torque	64.7 LB-FT		
Hz	60 Phase	3	Locked-rotor Torque	78.2 LB-FT	
NEMA Design Code	A	KVA Code	K	Starting Current	221 A
Service Factor (S.F.)	1	No-load Current	6.9 A		
NEMA Nom. Eff.	91	Power Factor	90	Line-line Res. @ 25°C	0.30935 Ω
Rating - Duty	40C AMB-CONT		Temp. Rise @ Rated Load	85°C	
			Locked-rotor Power Factor	26.5	

Load Characteristics 460 V, 60 Hz, 20 HP

% of Rated Load	25	50	75	100	125	150
Power Factor	61	80	87	90	92	92
Efficiency	86.5	91.3	92.5	92.6	92.2	91.5
Speed	3585.8	3572.3	3557.6	3541.8	3525.6	3508.1
Line amperes	8.97	12.8	17.5	22.5	27.8	33.4

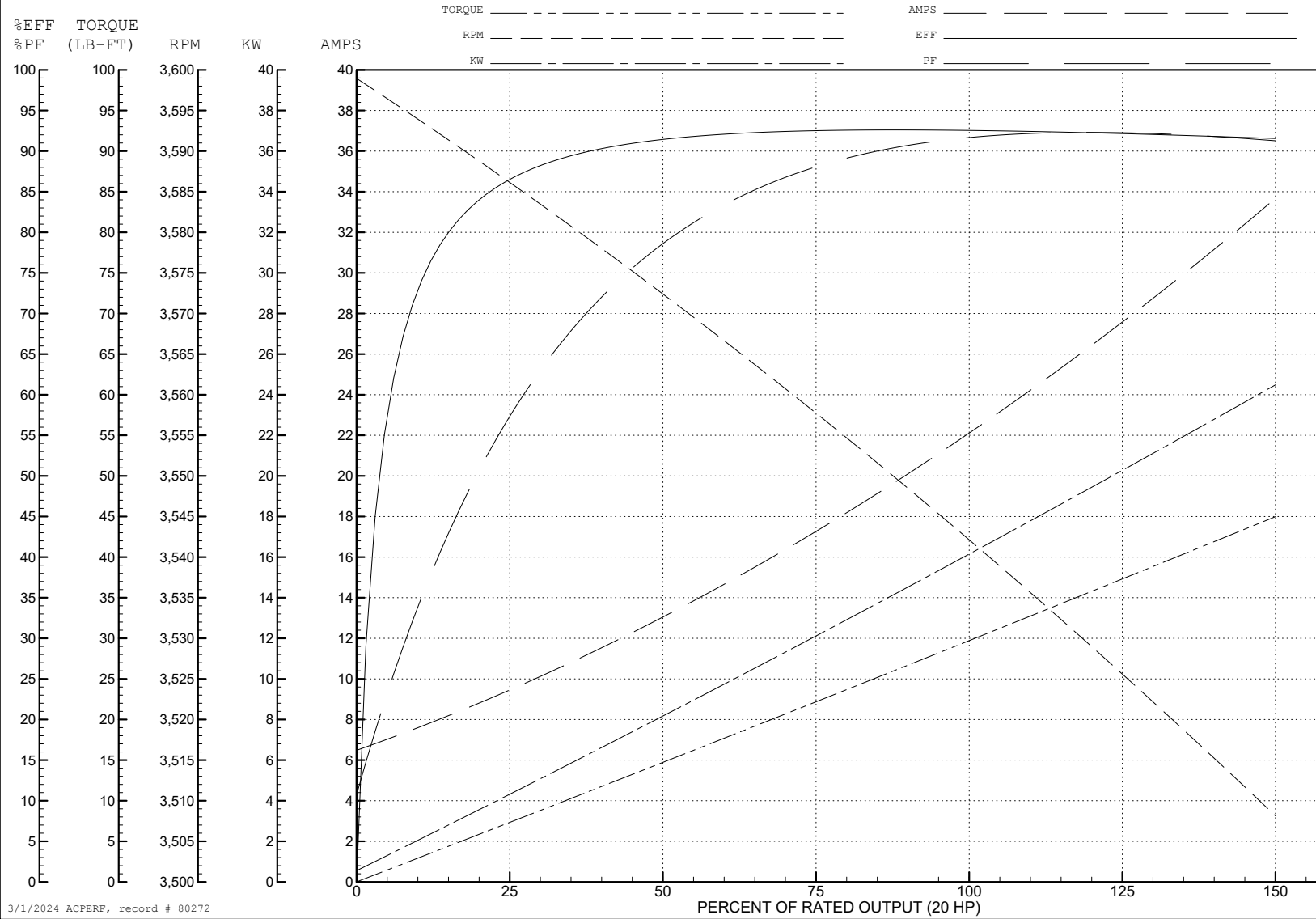
ABB Motors and Mechanical Inc.

WINDING # 39WGY419

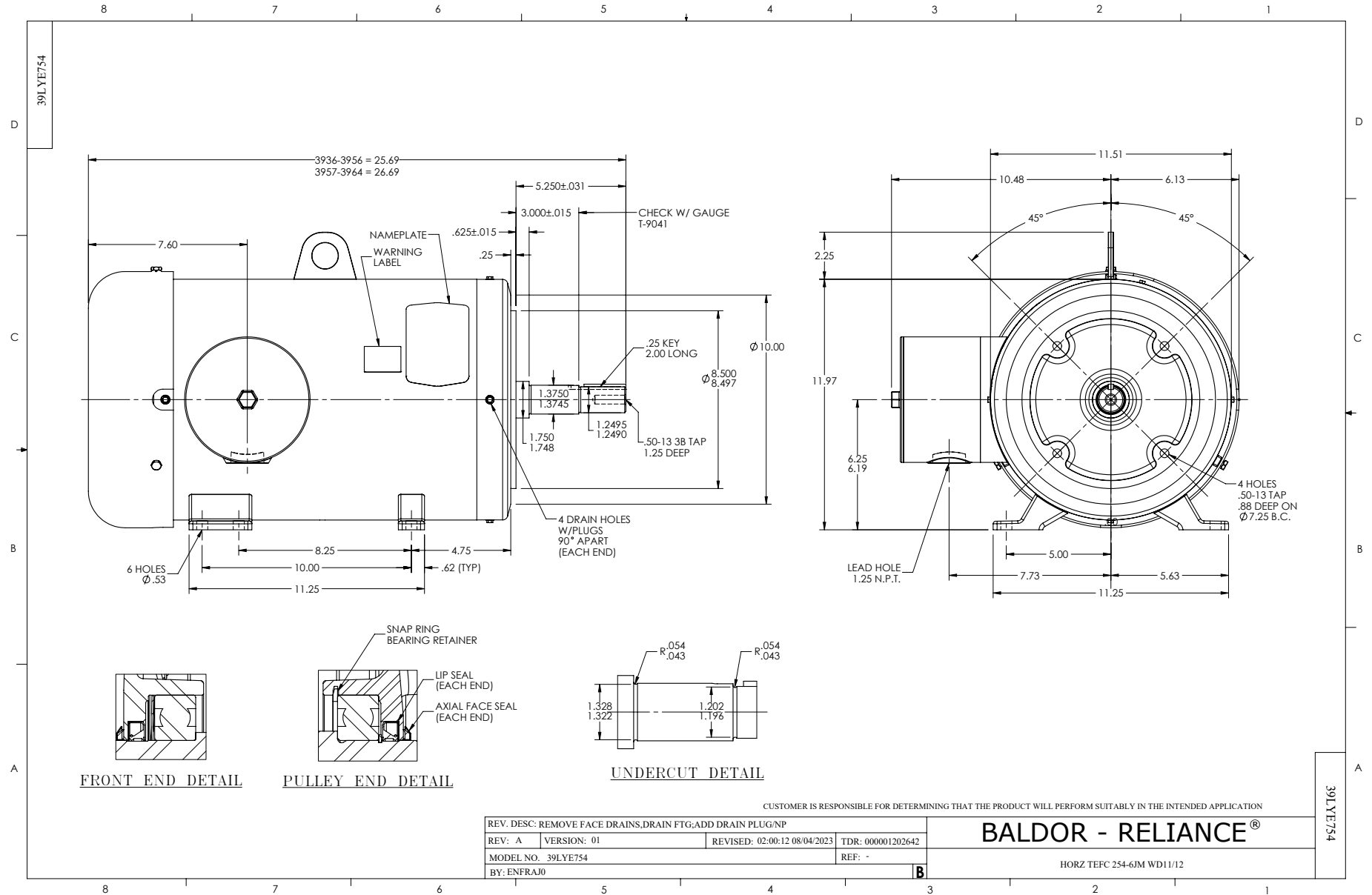
Typical performance - not guaranteed values.

20 HP 3 PH 60 HZ 3540 RPM 460 V 3960M

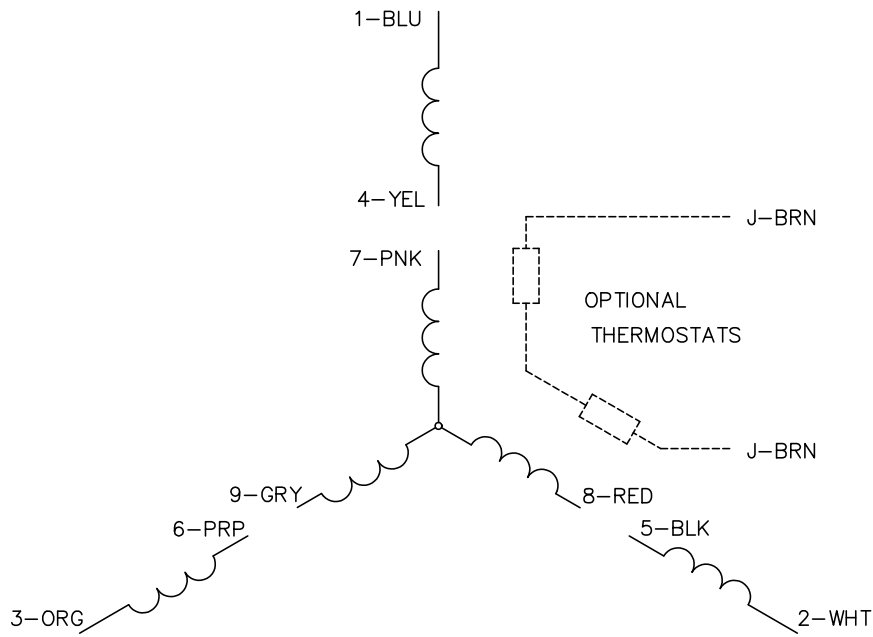
TORQUES (LB-FT): PO=161 PU=64.7 LR=78.2 LRA=221



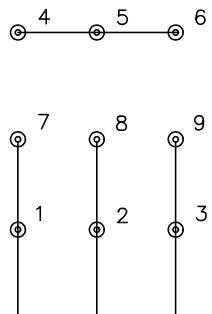
3/1/2024 ACPERF, record # 80272



CD0005

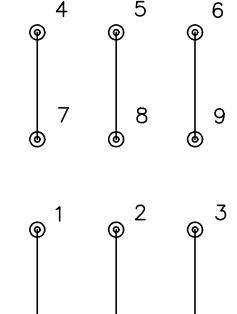


LOW VOLTAGE
(2Y)



LINE

HIGH VOLTAGE
(1Y)



LINE

NOTES:

1. INTERCHANGE ANY TWO LINE LEADS TO REVERSE ROTATION.
2. OPTIONAL THERMOSTATS ARE PROVIDED WHEN SPECIFIED.
3. ACTUAL NUMBER OF INTERNAL PARALLEL CIRCUITS MAY BE A MULTIPLE OF THOSE SHOWN ABOVE.
4. LEAD COLORS ARE OPTIONAL. LEADS MUST ALWAYS BE NUMBERED AS SHOWN.

CD0005

REV. DESC: REVISE TO SHOW OPTIONAL COLORS			
REV. LTR: E	BY: JLP	REVISED: 01/19/99 10:15	TDR: 0171435
S00000		FILE: AAA00005140	MDL: -
		MTL: -	

BALDOR ELECTRIC Co.

3PH, DV, 9 LEADS