

**BALDOR • RELIANCE**

---

# Customer information packet

## JMXM18522T

5//3HP, 3470//2870RPM, 3PH, 60//50HZ, 184JM

Class - CLI GP D; CLII GP F,G

Division - Division I

## Specifications

Enclosure	XPFC
Frame	184JM
Frame Material	Steel
Frequency	50.00 Hz 60.00 Hz
Motor Letter Type	Three Phase
Output @ Frequency	3.000 HP @ 50 HZ 5.000 HP @ 60 HZ
Phase	3
Synchronous Speed @ Frequency	3600 RPM @ 60 HZ
Voltage @ Frequency	380.0 V @ 50 HZ 230.0 V @ 60 HZ 190.0 V @ 50 HZ 460.0 V @ 60 HZ
XP Class and Group	CLI GP D; CLII GP F,G
XP Division	Division I
Agency Approvals	CSA UR CSA EEV
Ambient Temperature	40 °C
Auxillary Box	No Auxillary Box
Auxillary Box Lead Termination	None
Base Indicator	Rigid
Bearing Grease Type	Polyrex EM (-20F +300F)
Blower	None
Constant Torque Speed Range	6
Current @ Voltage	8.400 A @ 190.0 V 5.600 A @ 460.0 V 4.200 A @ 380.0 V 11.200 A @ 230.0 V
Design Code	A
Drip Cover	No Drip Cover

## Part detail

Revision	-
Type	AC
Mech. spec.	
Base	
Status	PRD/A
Elec. spec.	36WGT860
Layout	36LYE309
Eff. date	04-08-2021
CD Diagram	CD0005
Poles	02
Leads	9#16
Proprietary	False
Created date	03-24-2021

<b>Duty Rating</b>	CONT
<b>Efficiency @ 100% Load</b>	89.5 %
<b>Electrically Isolated Bearing</b>	Not Electrically Isolated
<b>Feedback Device</b>	NO FEEDBACK
<b>Heater Indicator</b>	No Heater
<b>High Voltage Full Load Amps</b>	4.2 a
<b>Insulation Class</b>	F
<b>Inverter Code</b>	Inverter Duty
<b>IP Rating</b>	NONE
<b>KVA Code</b>	L
<b>Lifting Lugs</b>	No Lifting Lugs
<b>Locked Bearing Indicator</b>	Locked Bearing
<b>Max Speed</b>	5400 rpm
<b>Motor Lead Termination</b>	Flying Leads
<b>Motor Standards</b>	NEMA
<b>Motor Type</b>	3634M
<b>Mounting Arrangement</b>	F1
<b>Number of Poles</b>	2
<b>Overall Length</b>	20.36 IN
<b>Power Factor</b>	94
<b>Product Family</b>	General Purpose
<b>Pulley Face Code</b>	C-Face
<b>Rodent Screen</b>	None
<b>Service Factor</b>	1.00
<b>Shaft Diameter</b>	0.875 IN
<b>Shaft Ground Indicator</b>	No Shaft Grounding
<b>Shaft Rotation</b>	Reversible
<b>Speed</b>	3470 rpm
<b>Speed Code</b>	Single Speed
<b>Starting Method</b>	Direct on line
<b>Thermal Device - Bearing</b>	None
<b>Thermal Device - Winding</b>	Normally Closed Thermostat
<b>Vibration Sensor Indicator</b>	No Vibration Sensor
<b>Winding Thermal 1</b>	None

Winding Thermal 2

None

XP Temp Code

T3C

---

**Nameplate**

**NP0887XPSLEV**

<b>NO.</b>		<b>CC</b>	010A		
<b>S/N</b>		<b>TEMP CODE</b>	T3C		
<b>SPEC.</b>	36-0000-0493	<b>INV.TYPE</b>	PWM		
<b>CAT.NO.</b>	JMXXM18522T	<b>C HP FR</b>	60	<b>C HP TO</b>	90
<b>HP</b>	5//3	<b>CT HZ FROM</b>	6	<b>CT HZ TO</b>	60
<b>VOLTS</b>	230/460//190/380	<b>VT HZ FROM</b>	6	<b>VT HZ TO</b>	60
<b>AMPS</b>	11.2/5.6//8.4/4.2	<b>MAG CUR</b>	3.2/1.6		
<b>RPM</b>	3470//2870	<b>MX RPM</b>	5400		
<b>HZ</b>	60//50	<b>PH</b>	3	<b>CL</b>	F
		<b>NOM.EFF.</b>	89.5		
<b>SER.F.</b>	1.00	<b>DES</b>	A	<b>SL HZ</b>	2.2
				<b>WK2</b>	0.15
<b>FRAME</b>	184JM	<b>RATING</b>	40C AMB-CONT		
	NEMA MG-1 PART 5, IP54				
	1.15 SF ON SINE WAVE				

## Parts list

Part number	Description	Quantity
SA392285	SA 36-0000-0493	1.000 ea
RA382837	RA 36-0000-0493	1.000 ea
LB1119N	WARNING LABEL	1.000 ea
LC0145B01	CONNECTION LABEL	1.000 ea
NP0887XPSLEV	SS XP INV UL CSA-EEV CC CL-I GP-D	1.000 ea
85XU0407S04	4X1/4 U DRIVE PIN STAINLESS	4.000 ea
85XU0407S04	4X1/4 U DRIVE PIN STAINLESS	2.000 ea
MN416A01	TAG-INSTAL-MAINT no wire (2100bx)4/22	1.000 ea
NP0018F	ALUM UL XP CONDUIT BOX NAMEPLATE	1.000 ea
36FH4009A02	FAN COVER FOR VM7042T,PRIMER	1.000 ea
51XW1032A06	10-32 X .38, TAPTITE II, HEX WSHR SLTD S	3.000 ea
34FN3002B02	EXTERNAL FAN, PLASTIC, .905/.907 HUB W/	1.000 ea
51XB0818A12	8-18X3/4 HXWSSLD SERTYB	1.000 ea
MJ1000A02	GREASE, POLYREX EM EXXON	0.050 lb
HA3105A06	THRUBOLT- 3/8-16 X 10.500 X	4.000 ea
XY3816A12	3/8-16 FINISHED NUT	4.000 ea
36EP3700A02	FR ENDPLATE, MACH	1.000 ea
HW5100A05	WVY WSHR F/205 & 304 BRGS	1.000 ea
36EP1709A01	PU ENDPLATE, MACH	1.000 ea
84XN2520J28	1/4-20X 1 3/4 HEX SOCKET HEAD CAP	2.000 ea
HW4001A02	3/8 HX SOC PIPE PLUG W/.75" TAPER (F/S)	2.000 ea
HW1001A25	LOCKWASHER 1/4, ZINC PLT .493 OD, .255 I	2.000 ea
60XN1032A07	10-32 X .4375 TRUSS HEAD, TORX SERRATED	2.000 ea
35CB3001A02SP	EXPL PROOF CONDUIT BOX, 3/4"PIPE TAP LEA	1.000 ea
11XW1032G06	10-32 X .38, TAPTITE II, HEX WSHR SLTD U	1.000 ea
HW3001B01	BRASS CUP WASHER, FOR #10 SCREW	1.000 ea
35CB3500A01SP	CONDUIT BOX LID, MACH	1.000 ea
51XN2520A16	SCREW, HEX WS SLT, ZN, 1/4-20 X 1.00	4.000 ea
MG1500Y02	WILKOPON PRIMER YELLOW	0.022 ga
MG1025G29	WILKOFAS, 789.229, DARK CHARCOAL GRAY	0.022 ga
GOPA1000	PKG GRP, PRINT PK1026A06	1.000 ea

HW2501D13

KEY, 3/16 SQ X 1.375

1.000 ea

HA7000A01

KEY RETAINER 7/8" DIA SHAFT

1.000 ea

**AC Induction Motor Performance Data**

Record # 73675

Typical performance - not guaranteed values

<b>Winding:</b> 36WGT860-R067		<b>Type:</b> 3634M		<b>Enclosure:</b> XPFC		
<b>Nameplate Data</b>			<b>460 V, 60 Hz: High Voltage Connection</b>			
<b>Rated Output (HP)</b>	5//3		<b>Full Load Torque</b>	7.66 LB-FT		
<b>Volts</b>	230/460//190/380		<b>Start Configuration</b>	direct on line		
<b>Full Load Amps</b>	11.2/5.6//8.4/4.2		<b>Breakdown Torque</b>	41.6 LB-FT		
<b>R.P.M.</b>	3470//2870		<b>Pull-up Torque</b>	26.2 LB-FT		
<b>Hz</b>	60//50	<b>Phase</b>	3	<b>Locked-rotor Torque</b>	30.5 LB-FT	
<b>NEMA Design Code</b>	A		<b>KVA Code</b>	L	<b>Starting Current</b>	59.3 A
<b>Service Factor (S.F.)</b>	1			<b>No-load Current</b>	1.55 A	
<b>NEMA Nom. Eff.</b>	89.5	<b>Power Factor</b>	94	<b>Line-line Res. @ 25°C</b>	2.2 Ω	
<b>Rating - Duty</b>	40C AMB-CONT			<b>Temp. Rise @ Rated Load</b>	59°C	
				<b>Locked-rotor Power Factor</b>	42.9	
				<b>Rotor inertia</b>	0.152 LB-FT <sup>2</sup>	

**Load Characteristics 460 V, 60 Hz, 5 HP**

<b>% of Rated Load</b>	<b>25</b>	<b>50</b>	<b>75</b>	<b>100</b>	<b>125</b>	<b>150</b>
<b>Power Factor</b>	65	83	90	94	95	95
<b>Efficiency</b>	87.4	90.6	90.8	90.5	88.9	87.1
<b>Speed</b>	3567	3536	3503	3469	3431	3389
<b>Line amperes</b>	2.1	3.14	4.37	5.56	6.98	8.46



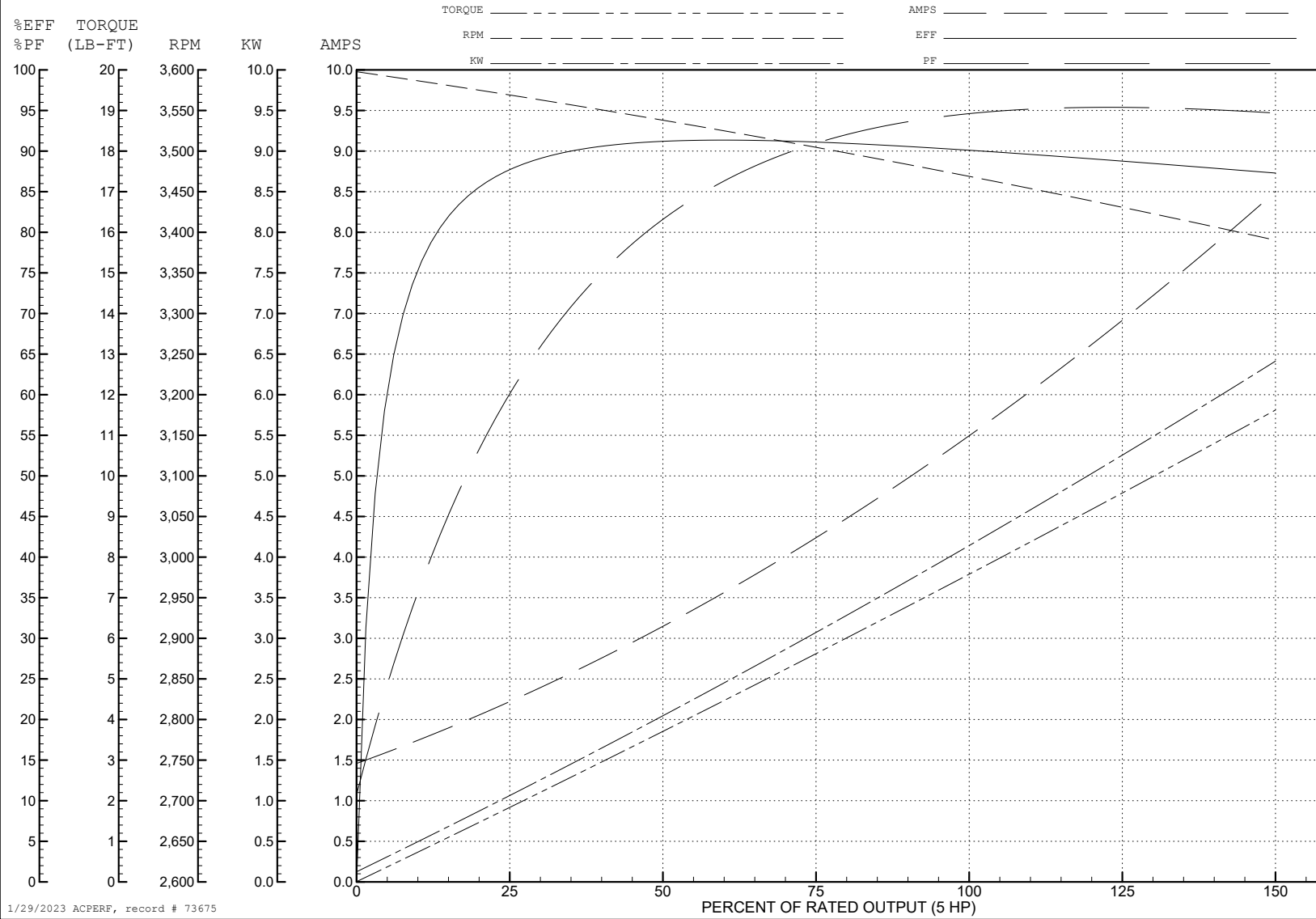
ABB Motors and Mechanical Inc.

WINDING # 36WGT860

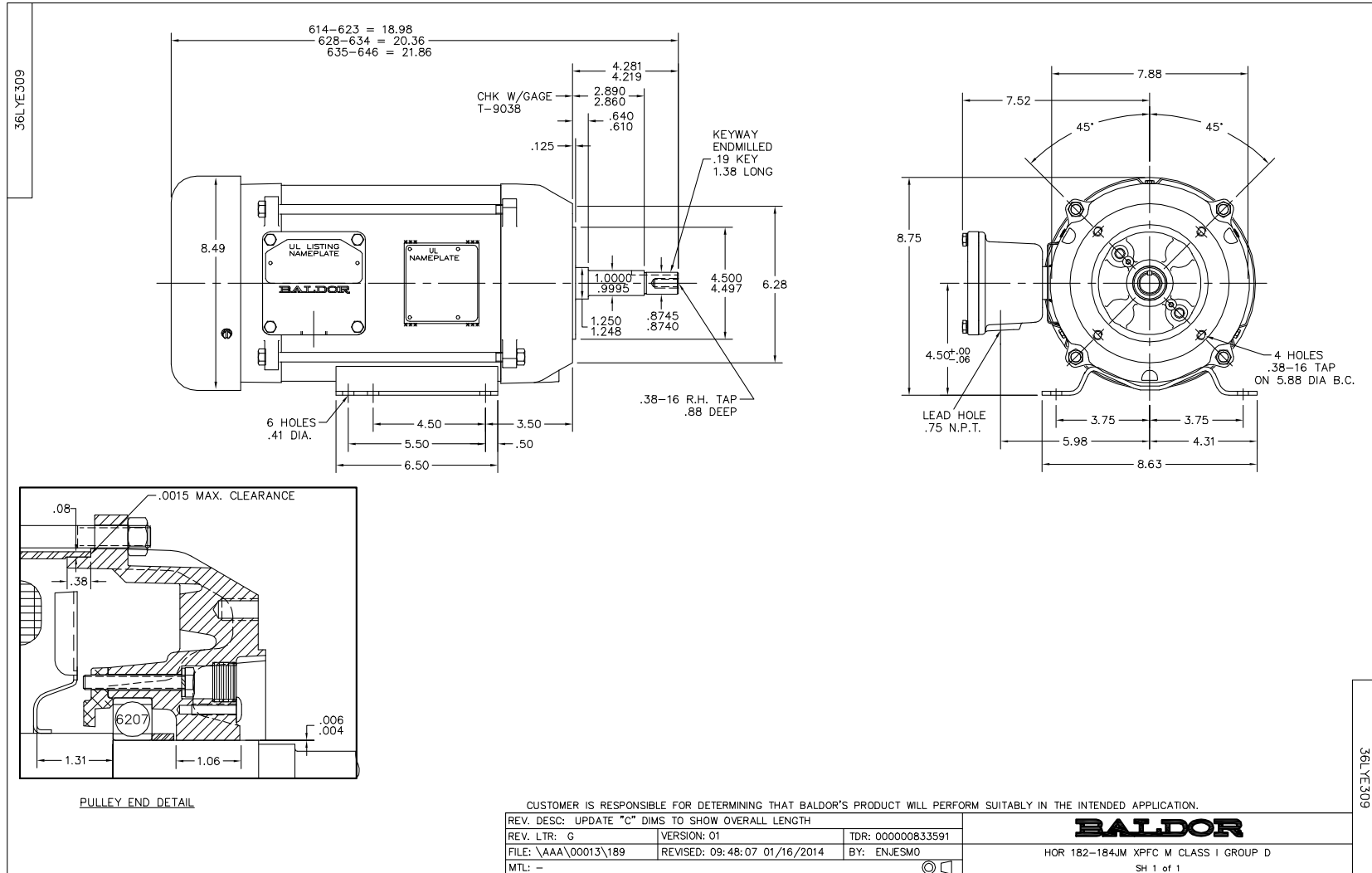
5 HP 3 PH 60 HZ 3469 RPM 460 V 3634M

Typical performance - not guaranteed values.

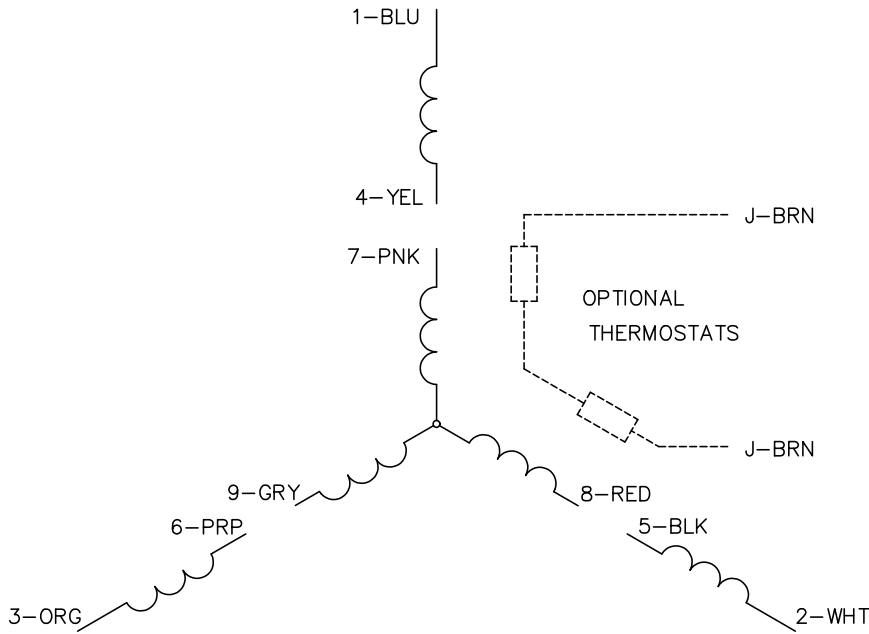
TORQUES (LB-FT): PO=41.6 PU=26.2 LR=30.5 LRA=59.3



1/29/2023 ACPERF, record # 73675



CD0005

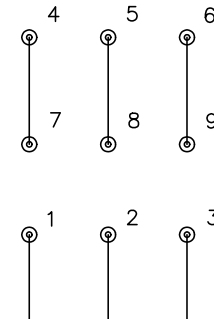


LOW VOLTAGE  
(2Y)



LINE

HIGH VOLTAGE  
(1Y)



LINE

NOTES:

1. INTERCHANGE ANY TWO LINE LEADS TO REVERSE ROTATION.
2. OPTIONAL THERMOSTATS ARE PROVIDED WHEN SPECIFIED.
3. ACTUAL NUMBER OF INTERNAL PARALLEL CIRCUITS MAY BE A MULTIPLE OF THOSE SHOWN ABOVE.
4. LEAD COLORS ARE OPTIONAL. LEADS MUST ALWAYS BE NUMBERED AS SHOWN.

CD0005

REV. DESC: REVISE TO SHOW OPTIONAL COLORS			
REV. LTR: E	BY: JLP	REVISED: 01/19/99 10:15	TDR: 0171435
S00000		FILE: AAA00005140	MDL: -
		MTL: -	

**BALDOR ELECTRIC Co.**

3PH, DV, 9 LEADS