

BALDOR® • RELIANCE 

Product Information Packet

KEL11203

.25HP,1725RPM,1PH,60HZ,56C,3411LC,OPEN,F

Part Detail							
Revision:	G	Status:	PRD/A	Change #:		Proprietary:	No
Type:	AC	Elec. Spec:	34WGR064	CD Diagram:	CD0055	Mfg Plant:	
Mech. Spec:	34F534	Layout:	34LYF534	Poles:	04	Created Date:	09-25-2014
Base:	N	Eff. Date:	07-20-2022	Leads:	6#18		

Specs			
Catalog Number:	KEL11203	Insulation Class:	B
Enclosure:	OPEN	Inverter Code:	Not Inverter
Frame:	56C	KVA Code:	L
Frame Material:	Steel	Lifting Lugs:	No Lifting Lugs
Motor Letter Type:	Cap Start, Cap Run	Locked Bearing Indicator:	Locked Bearing
Output @ Frequency:	.250 HP @ 60 HZ	Motor Lead Quantity/Wire Size:	6 @ 18 AWG
Synchronous Speed @ Frequency:	1800 RPM @ 60 HZ	Motor Lead Exit:	Ko Box
Voltage @ Frequency:	115.0 V @ 60 HZ	Motor Lead Termination:	Flying Leads
	230.0 V @ 60 HZ	Motor Type:	3411LC
XP Class and Group:	None	Mounting Arrangement:	F1
XP Division:	Not Applicable	Power Factor:	89
Agency Approvals:	C UR US ENERGY	Product Family:	General Purpose
Auxillary Box:	No Auxillary Box	Pulley End Bearing Type:	Ball
Auxillary Box Lead Termination:	None	Pulley Face Code:	C-Face
Base Indicator:	No Mounting	Pulley Shaft Indicator:	Standard
Bearing Grease Type:	Polyrex EM (-20F +300F)	Rodent Screen:	None
Blower:	None	RoHS Status:	ROHS COMPLIANT
Current @ Voltage:	1.300 A @ 230.0 V	Shaft Extension Location:	Pulley End

	1.900 A @ 208.0 V	Shaft Ground Indicator:	No Shaft Grounding
	2.600 A @ 115.0 V	Shaft Rotation:	Reversible
Design Code:	-	Shaft Slinger Indicator:	No Slinger
Drip Cover:	Drip Cover	Speed Code:	Single Speed
Duty Rating:	CONT	Motor Standards:	NEMA
Electrically Isolated Bearing:	Not Electrically Isolated	Starting Method:	Direct on line
Feedback Device:	NO FEEDBACK	Thermal Device - Bearing:	None
Front Face Code:	Drip Cover Mounting	Thermal Device - Winding:	None
Front Shaft Indicator:	None	Vibration Sensor Indicator:	No Vibration Sensor
Heater Indicator:	No Heater	Winding Thermal 1:	None
		Winding Thermal 2:	None

Nameplate NP3155L												
CAT.NO.	KEL11203											
SPEC.	34F534R064G1											
HP	.25											
VOLTS	115/230											
AMP	2.6/1.3											
RPM	1725											
FRAME	56C					HZ	60			PH	1	
SER.F.	1.35					CODE	L		DES	-	CL	B
F.L. AVG. EFF.	68.5					PF	89					
RATING	40C AMB-CONT											
CC									USABLE AT 208V	1.9		
DE	6203					ODE	6203					
ENCL	OPEN					SN						
	SFA 3.4/1.7											

Parts List		
Part Number	Description	Quantity
SA288271	SA 34F534R064G1	1.000 EA
RA274467	RA 34F534R064G1	1.000 EA
OC3020F12SP	CAPACITORS 20 MFD 370 VAC	1.000 EA
EC1161A02	BMI 091A161B125AD2A ELEC CAP 115V 1.4 X	1.000 EA
NS2512A01	INSULATOR, CONDUIT BOX X	1.000 EA
34CB3002A	CB CAST W/.88 DIA HOLE	1.000 EA
51XB1016A07	10-16 X 7/16 HXWSSLD SERTYB	2.000 EA
11XW1032G06	10-32 X .38, TAPTITE II, HEX WSHR SLTD U	1.000 EA
34EP3210A03SP	FR ENDPLATE, MACH	1.000 EA
SP1006A01	INSULATOR MODEL 35 SWITCH	1.000 EA
51XW0832A07	8-32 X .44, TAPTITE II, HEX WSHR SLTD SE	2.000 EA
34CB3801	CAPACITOR BOX, DIE CAST	1.000 EA
NS2501A02	INSULATOR, CAPACITOR BOX	1.000 EA
51XB1214A08	12-14 X 1/2HX WS SL SR TYBX	2.000 EA
HW5100A03	WAVY WASHER (W1543-017)	1.000 EA
34EP3401A01P	PU ENDPLATE, MACH/PAINTED	1.000 EA
34AD2000	BAFFLE PLATE, STAMPED	1.000 EA
60XW0632A06	6-32 X 3/8 TORX HEAD SCREW TAPTITE II	4.000 EA
51XN1032A20	10-32 X 1 1/4 HX WS SL SR	2.000 EA
34FH4000A11	DRIP COVER, STAMPED,PRIMER	1.000 EA
51XW1032A06	10-32 X .38, TAPTITE II, HEX WSHR SLTD S	3.000 EA
34CB4517	CB LID 4 MTG HOLES .22 DIA STAMPED, FOR	1.000 EA
51XW0832A07	8-32 X .44, TAPTITE II, HEX WSHR SLTD SE	4.000 EA
HW2501D13	KEY, 3/16 SQ X 1.375	1.000 EA

Parts List (continued)		
Part Number	Description	Quantity
HA7000A04	KEY RETAINER 0.625 DIA SHAFTS	1.000 EA
MG1000Y03	MUNSELL 2.53Y 6.70/ 4.60, GLOSS 20,	0.014 GA
85XU0407S04	4X1/4 U DRIVE PIN STAINLESS	2.000 EA
34GS5003A01	FOAM SLEEVE, ID = 2 1/16" X 4 3/8"	2.000 EA
SP5051B17	MDL 34 TORQ STAT SW,TYPE LC, STD F1 & F2	1.000 EA
HA3100A28	THRUBOLT 10-32 X 8.187	4.000 EA
LC0001A01	CONN LABEL / WARNING LABEL (LC0001 / LB1	1.000 EA
NP3155L	ALUM SUPER-E UL CSA CC "SEMS"	1.000 EA
MN416A01	TAG-INSTAL-MAINT no wire (2200bx) 4/22	1.000 EA
PK3083	STYROFOAM PACKING CRADLE	1.000 EA
PK3088	MICROFOAM, 8"X"8 PERF. SHEETS	1.000 EA
35PA1066	PKG GRP, PRINT PK1008A06	1.000 EA

AC Induction Motor Performance Data

Record # 47419

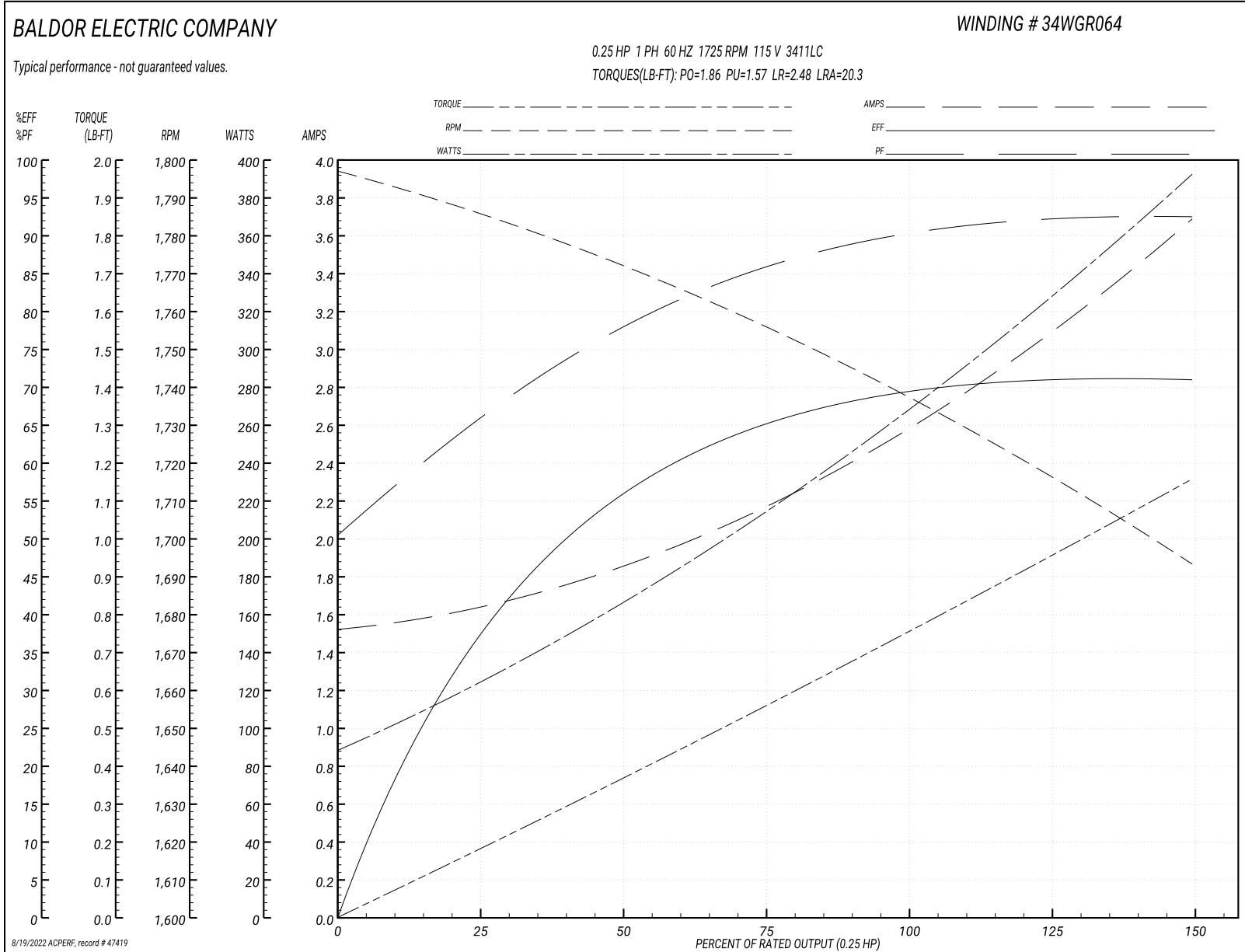
Typical performance - not guaranteed values

Winding: 34WGR064-R002			Type: 3411LC			Enclosure: OPEN		
Nameplate Data				115 V, 60 Hz: Low Voltage Connection				
Rated Output (HP)			.25	Full Load Torque	0.754 LB-FT			
Volts			115/230	Start Configuration	direct on line			
Full Load Amps			2.6/1.3	Breakdown Torque	1.86 LB-FT			
R.P.M.			1725	Pull-up Torque	1.57 LB-FT			
Hz	60 Phase		1	Locked-rotor Torque	2.48 LB-FT			
NEMA Design Code	- KVA Code		L	Starting Current	20.3 A			
Service Factor (S.F.)			1.35	No-load Current	1.53 A			
NEMA Nom. Eff.	68.5 Power Factor		89	Line-line Res. @ 25°C	3.4881 Ω A Ph 6.3165 Ω B Ph			
Rating - Duty			40C AMB-CONT	Temp. Rise @ Rated Load	27°C			
S.F. Amps			3.7/1.7	Temp. Rise @ S.F. Load	34°C			

Load Characteristics 115 V, 60 Hz, 0.25 HP

% of Rated Load	25	50	75	100	125	150	S.F.
Power Factor	67	79	85	90	92	94	93
Efficiency	37.2	55.5	65.1	69.7	71.4	71.1	71.3
Speed	1783.6	1770.8	1755.8	1739.1	1717.7	1691.5	1707
Line amperes	1.63	1.85	2.18	2.59	3.1	3.69	3.34

Performance Graph at 115V, 60Hz, 0.25HP Typical performance - Not guaranteed values



AC Induction Motor Performance Data

Record # 49393

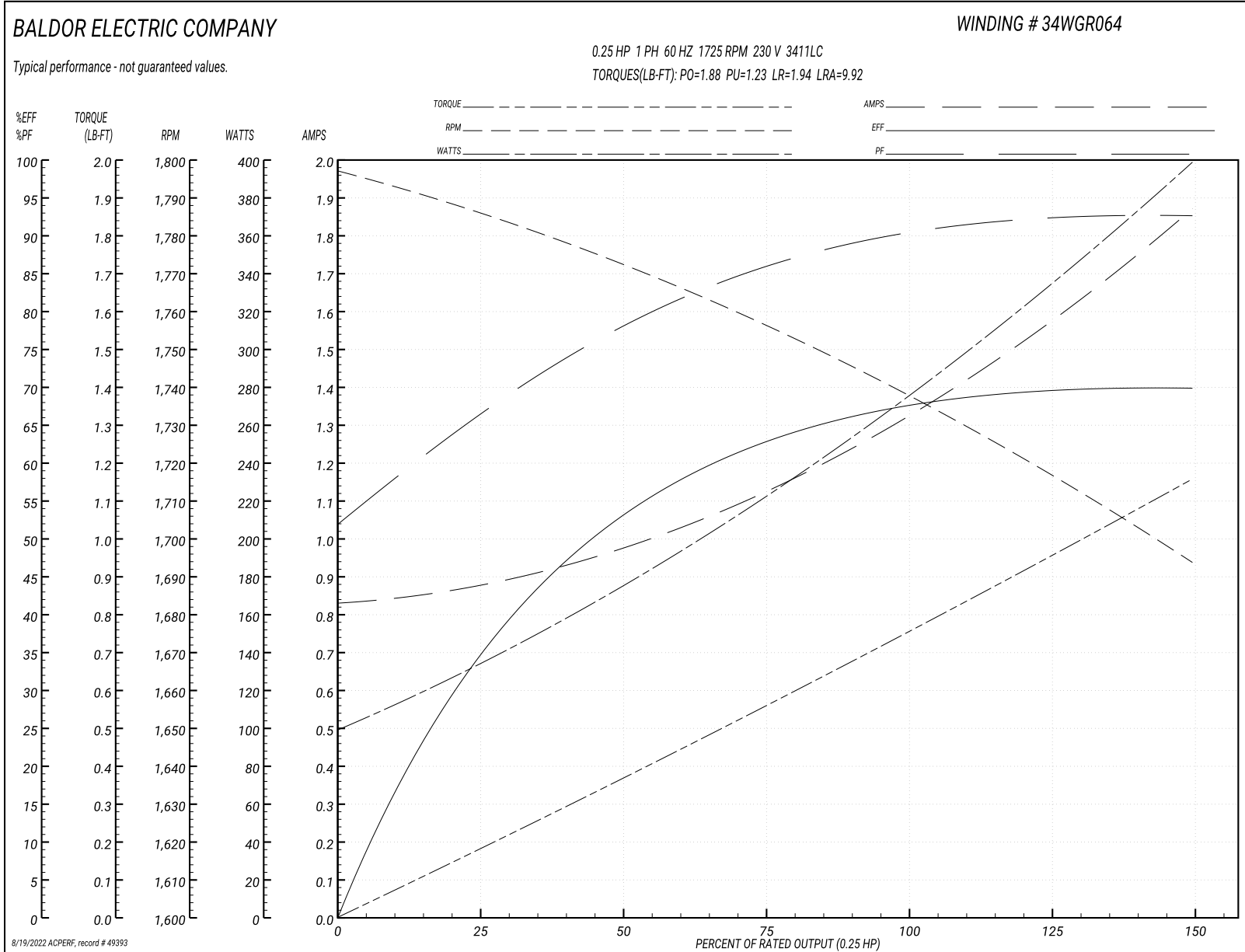
Typical performance - not guaranteed values

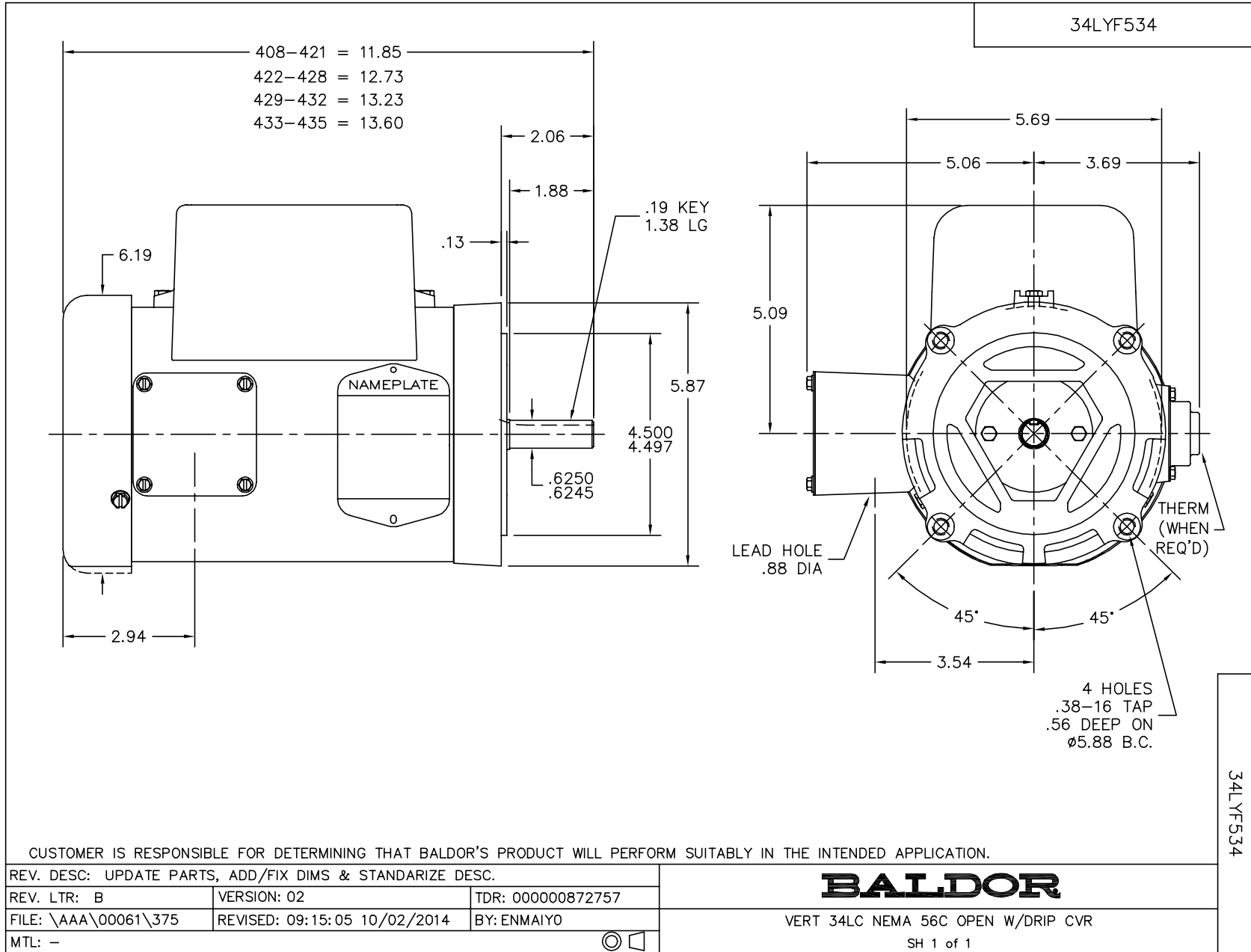
Winding: 34WGR064-R002		Type: 3411LC		Enclosure: OPEN	
Nameplate Data			230 V, 60 Hz: High Voltage Connection		
Rated Output (HP)	.25	Full Load Torque	0.753 LB-FT		
Volts	115/230	Start Configuration	direct on line		
Full Load Amps	2.6/1.3	Breakdown Torque	1.88 LB-FT		
R.P.M.	1725	Pull-up Torque	1.23 LB-FT		
Hz	60 Phase	1	Locked-rotor Torque	1.94 LB-FT	
NEMA Design Code	- KVA Code	L	Starting Current	9.92 A	
Service Factor (S.F.)	1.35		No-load Current	0.836 A	
NEMA Nom. Eff.	68.5 Power Factor	89	Line-line Res. @ 25°C	3.39 Ω A Ph 6.4 Ω B Ph	
Rating - Duty	40C AMB-CONT		Temp. Rise @ Rated Load	30°C	
S.F. Amps	3.4/1.7		Temp. Rise @ S.F. Load	36°C	
			Rotor inertia	0.0261 LB-FT ²	

Load Characteristics 230 V, 60 Hz, 0.25 HP

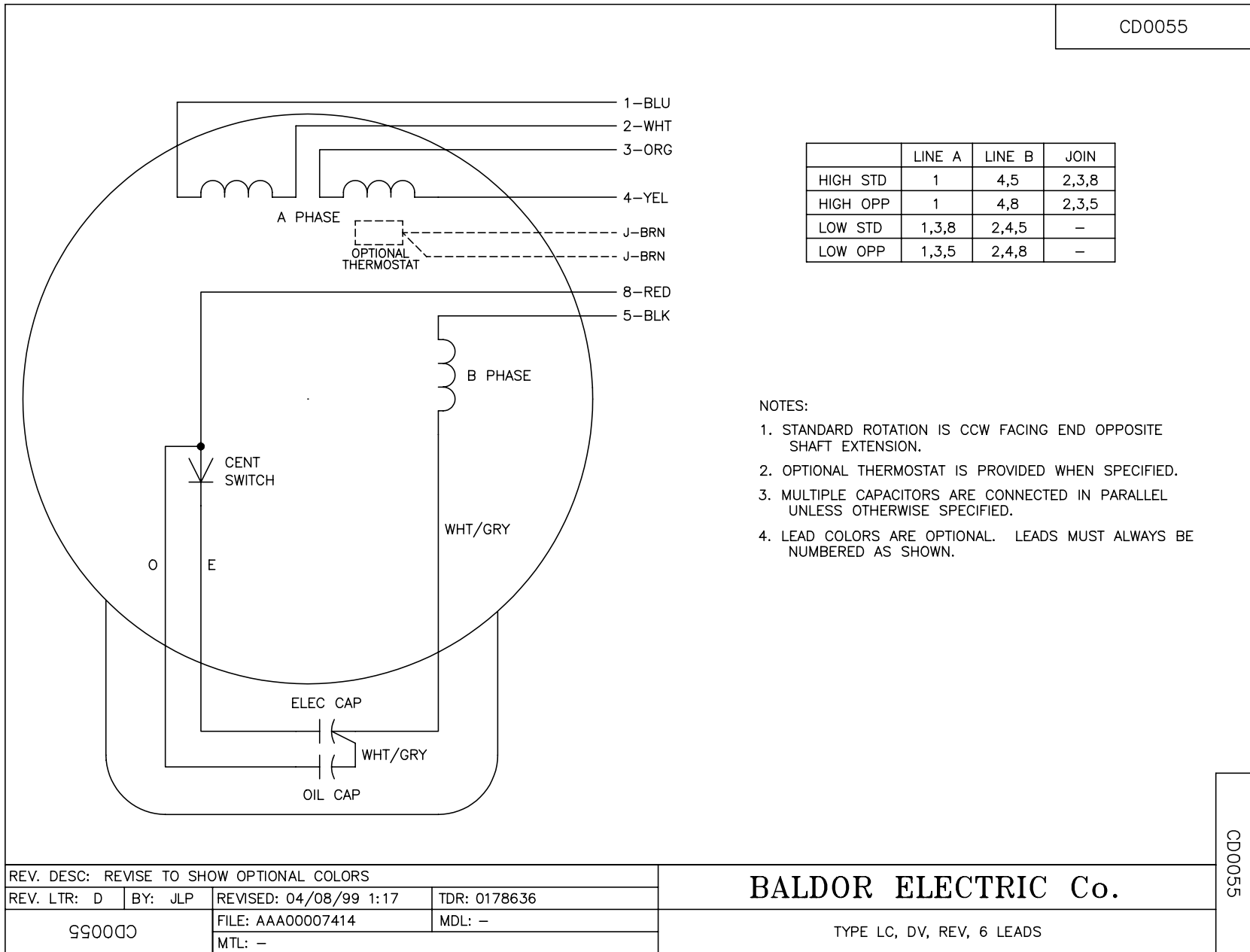
% of Rated Load	25	50	75	100	125	150	S.F.
Power Factor	67	79	86	90	92	93	92
Efficiency	34.6	52.7	62.8	67.9	69.9	69.7	69.8
Speed	1784	1771	1756	1740	1718	1692	1708
Line amperes	0.871	0.97	1.13	1.33	1.58	1.87	1.7

Performance Graph at 230V, 60Hz, 0.25HP Typical performance - Not guaranteed values





CD0055



REV. DESC: REVISE TO SHOW OPTIONAL COLORS			
REV. LTR: D	BY: JLP	REVISED: 04/08/99 1:17	TDR: 0178636
99000		FILE: AAA00007414	MDL: -
CD0055		MTL: -	

BALDOR ELECTRIC Co.

TYPE LC, DV, REV, 6 LEADS

CD0055