

BALDOR® • RELIANCE 

Product Information Packet

L1313

1.5HP,3450RPM,1PH,60HZ,56H,3428LC,OPEN

| Part Detail | | | | | | | |
|-------------|--------|-------------|------------|-------------|--------|---------------|----|
| Revision: | W | Status: | PRD/A | Change #: | | Proprietary: | No |
| Type: | AC | Elec. Spec: | 34WGX768 | CD Diagram: | CD0055 | Mfg Plant: | |
| Mech. Spec: | 34H552 | Layout: | 34LYH552 | Poles: | 02 | Created Date: | |
| Base: | RG | Eff. Date: | 04-22-2021 | Leads: | 6#18 | | |

| Specs | | | |
|---------------------------------|-------------------------|--------------------------------|--------------------|
| Catalog Number: | L1313 | Insulation Class: | B |
| Enclosure: | ODP | Inverter Code: | Not Inverter |
| Frame: | 56H | KVA Code: | G |
| Frame Material: | Steel | Lifting Lugs: | No Lifting Lugs |
| Output @ Frequency: | 1.500 HP @ 60 HZ | Locked Bearing Indicator: | No Locked Bearing |
| Synchronous Speed @ Frequency: | 3600 RPM @ 60 HZ | Motor Lead Quantity/Wire Size: | 6 @ 18 AWG |
| Voltage @ Frequency: | 115.0 V @ 60 HZ | Motor Lead Exit: | Ko Box |
| | 230.0 V @ 60 HZ | Motor Lead Termination: | Flying Leads |
| XP Division: | Not Applicable | Motor Type: | 3428LC |
| Agency Approvals: | UR | Mounting Arrangement: | F1 |
| | CSA | Power Factor: | 97 |
| Auxillary Box: | No Auxillary Box | Product Family: | General Purpose |
| Auxillary Box Lead Termination: | None | Pulley End Bearing Type: | Ball |
| Base Indicator: | Rigid | Pulley Face Code: | Standard |
| Bearing Grease Type: | Polyrex EM (-20F +300F) | Pulley Shaft Indicator: | Standard |
| Blower: | None | Rodent Screen: | None |
| Current @ Voltage: | 12.800 A @ 115.0 V | Shaft Extension Location: | Pulley End |
| | 6.400 A @ 230.0 V | Shaft Ground Indicator: | No Shaft Grounding |

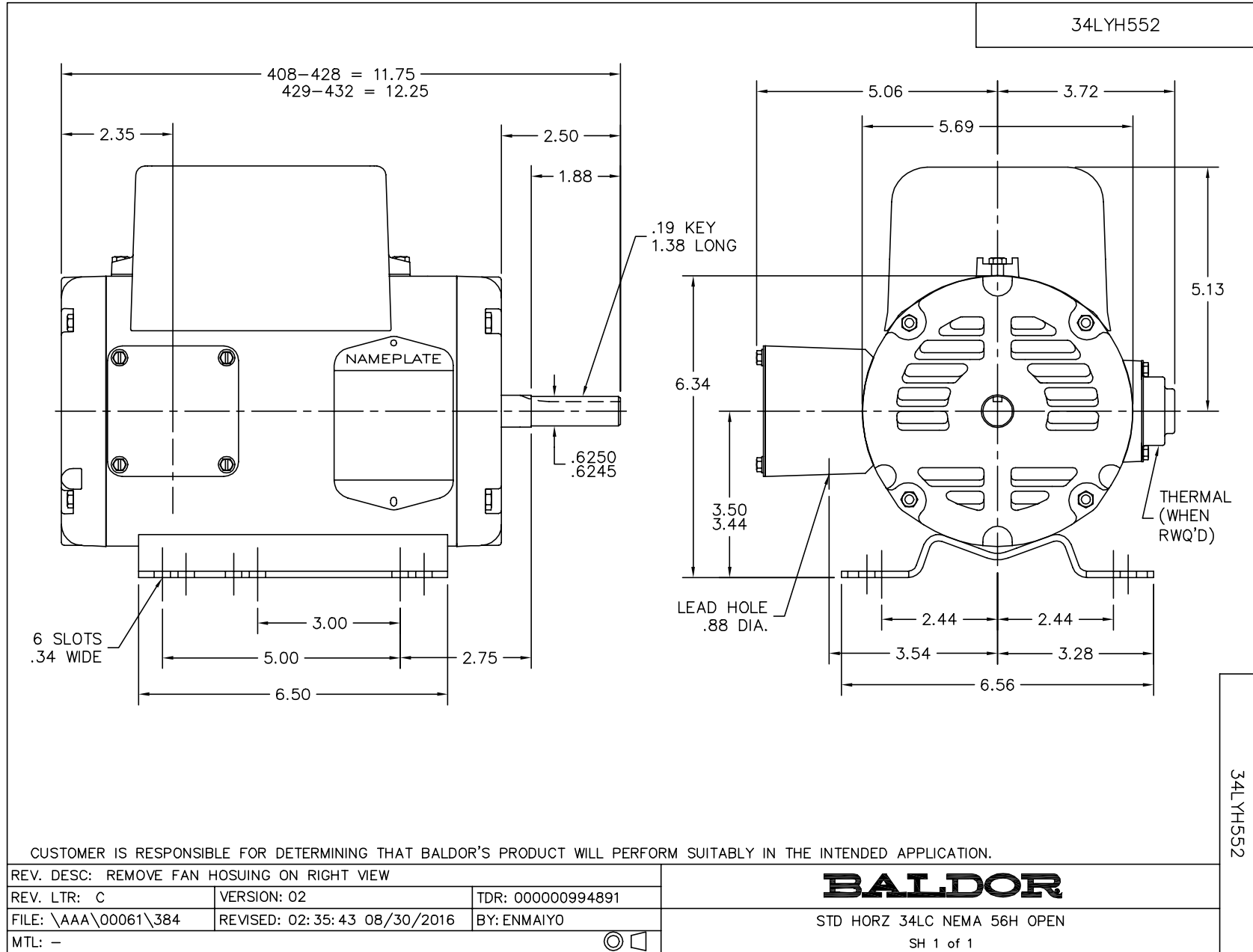
| | | | |
|---------------------------------------|---------------------------|------------------------------------|---------------------|
| | 7.000 A @ 208.0 V | Shaft Rotation: | Reversible |
| Drip Cover: | No Drip Cover | Shaft Slinger Indicator: | No Slinger |
| Duty Rating: | CONT | Speed Code: | Single Speed |
| Electrically Isolated Bearing: | Not Electrically Isolated | Motor Standards: | NEMA |
| Feedback Device: | NO FEEDBACK | Starting Method: | Direct on line |
| Front Face Code: | Standard | Thermal Device - Bearing: | None |
| Front Shaft Indicator: | None | Thermal Device - Winding: | None |
| Heater Indicator: | No Heater | Vibration Sensor Indicator: | No Vibration Sensor |

| | | | | | | | | | | |
|--------------------------|--------------------|--|-------------|----|------------|------|--|--------------|-----------------------|---|
| Nameplate NP1256L | | | | | | | | | | |
| CAT.NO. | L1313X | | | | | | | | | |
| SPEC. | 34H552X768 | | | | | | | | | |
| HP | 1.5 | | | | | | | | | |
| VOLTS | 115/230 | | | | | | | | | |
| AMP | 12.8/6.4 | | | | | | | | | |
| RPM | 3450 | | | | | | | | | |
| FRAME | 56H | | | | HZ | 60 | | | PH | 1 |
| SER.F. | 1.15 | | CODE | G | DES | - | | CLASS | B | |
| NEMA-NOM-EFF | 77 | | PF | 97 | | | | | | |
| RATING | 40C AMB-CONT | | | | | | | | | |
| CC | | | | | | | | | USABLE AT 208V | 7 |
| DE | 6203 | | | | ODE | 6203 | | | | |
| ENCL | OPEN | | SN | | | | | | | |
| | NOT FOR USE IN USA | | | | | | | | | |

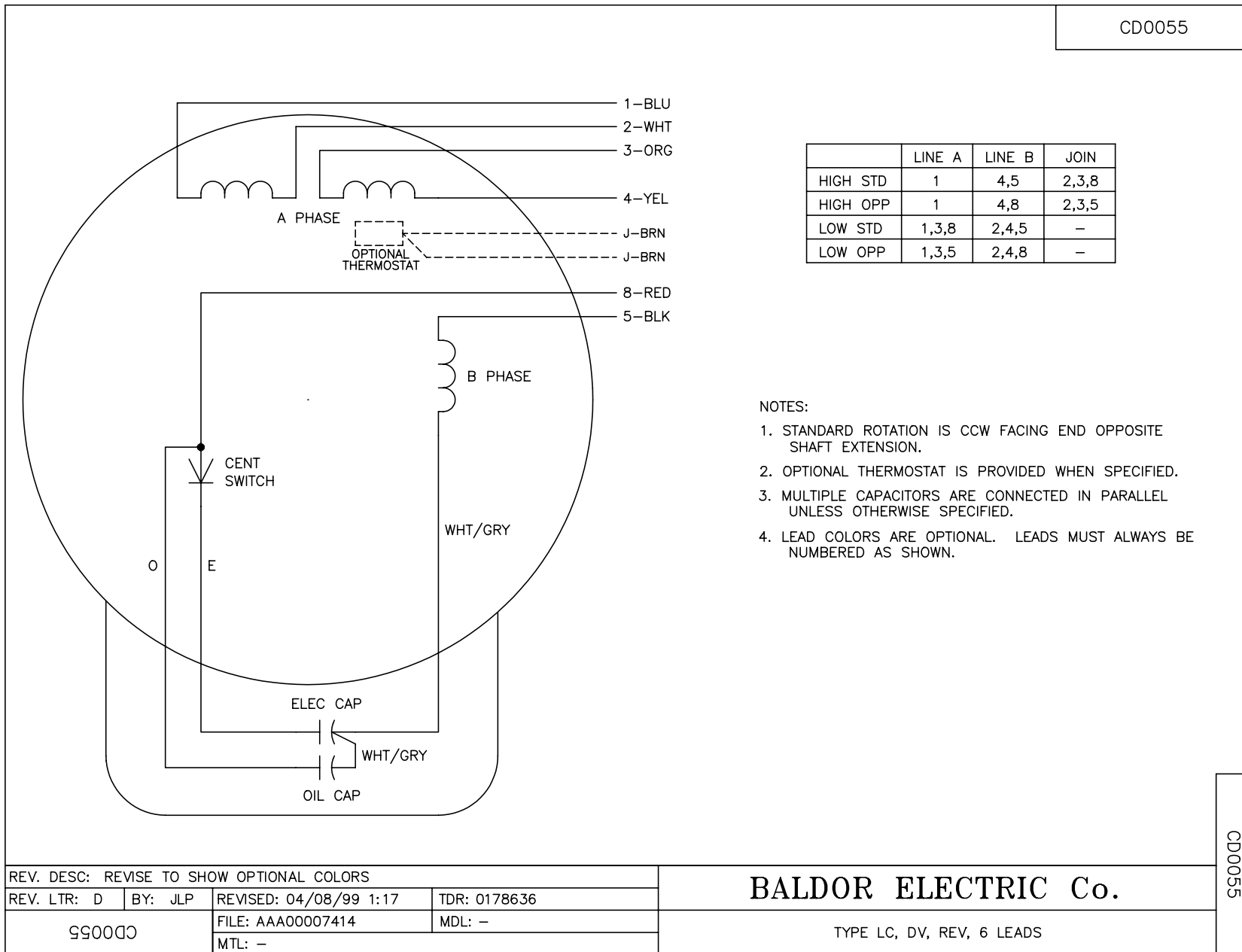
| Parts List | | |
|---------------|--|----------|
| Part Number | Description | Quantity |
| SA044133 | SA 34H552X768 | 1.000 EA |
| RA039579 | RA 34H552X768 | 1.000 EA |
| OC3050C09 | CYL OIL CAP 50MFD/240V | 1.000 EA |
| EC1400A03 | ELEC CAP, 400-480 MFD, 125V, 1.81D X 3. | 1.000 EA |
| NS2512A01 | INSULATOR, CONDUIT BOX X | 1.000 EA |
| 34CB3002A | CB CAST W/.88 DIA HOLE | 1.000 EA |
| 51XB1016A07 | 10-16 X 7/16 HXWSSLD SERTYB | 2.000 EA |
| 11XW1032G06 | 10-32 X .38, TAPTITE II, HEX WSHR SLTD U | 1.000 EA |
| 51XW0832A07 | 8-32 X .44, TAPTITE II, HEX WSHR SLTD SE | 2.000 EA |
| SP1006A01 | INSULATOR MODEL 35 SWITCH | 1.000 EA |
| 34EP3200A01SP | FR ENDPLATE, MACH | 1.000 EA |
| 34CB3801 | CAPACITOR BOX, DIE CAST | 1.000 EA |
| 34GS5003A01 | FOAM SLEEVE, ID = 2 1/16" X 4 3/8" | 1.000 EA |
| 51XB1214A08 | 12-14 X 1/2HX WS SL SR TYBX | 2.000 EA |
| HW5100A03 | WAVY WASHER (W1543-017) | 1.000 EA |
| 34EP3200A02SP | FR/PU ENDPLATE, MACH | 1.000 EA |
| XY1032A02 | 10-32 HEX NUT DIRECTIONAL SERRATION | 4.000 EA |
| 34CB4517 | CB LID 4 MTG HOLES .22 DIA STAMPED, FOR | 1.000 EA |
| 51XW0832A07 | 8-32 X .44, TAPTITE II, HEX WSHR SLTD SE | 4.000 EA |
| HW2501D13 | KEY, 3/16 SQ X 1.375 | 1.000 EA |
| HA7000A04 | KEY RETAINER 0.625 DIA SHAFTS | 1.000 EA |
| MG1000G27 | MED CHARCOAL METALLIC GREY 400-0096 | 0.014 GA |
| 85XU0407S04 | 4X1/4 U DRIVE PIN STAINLESS | 2.000 EA |
| SP5181A01 | MODEL 35 TORQ STATIONARY SWITCH LEAD ASS | 1.000 EA |

| Parts List (continued) | | |
|-------------------------------|--|-----------------|
| Part Number | Description | Quantity |
| HA3100A45 | THRUBOLT 10-32 X 8.875 | 4.000 EA |
| MN416A01 | TAG-INSTAL-MAINT no wire (2200bx) 4/22 | 1.000 EA |
| LB1417 | LABEL CARTON 6X4 PERFORATED BLANK ROLLS | 1.000 EA |
| LC0001A01 | CONN LABEL / WARNING LABEL (LC0001 / LB1 | 1.000 EA |
| NP1256L | ALUM UL CSA CC INDUSTRIAL MOTOR A60 | 1.000 EA |
| 35PA1066 | PKG GRP, PRINT PK1008A06 | 1.000 EA |

No performance data has been
assigned to this product.



CD0055



| | | | |
|---|---------|------------------------|--------------|
| REV. DESC: REVISE TO SHOW OPTIONAL COLORS | | | |
| REV. LTR: D | BY: JLP | REVISED: 04/08/99 1:17 | TDR: 0178636 |
| 990000 | | FILE: AAA00007414 | MDL: - |
| | | MTL: - | |

BALDOR ELECTRIC Co.

TYPE LC, DV, REV, 6 LEADS

CD0055