

BALDOR® • RELIANCE 

Product Information Packet

L1317

2HP,3450RPM,1PH,60HZ,56/56H,3528L,OPEN

Part Detail							
Revision:	AV	Status:	PRD/A	Change #:		Proprietary:	No
Type:	AC	Elec. Spec:	35WG0184	CD Diagram:	CD0001	Mfg Plant:	
Mech. Spec:	35J384	Layout:	35LYJ384	Poles:	02	Created Date:	06-22-2007
Base:	RG	Eff. Date:	07-01-2021	Leads:	4#14 A PH,2#18 B PH		

Specs			
Catalog Number:	L1317	Insulation Class:	B
Enclosure:	ODP	Inverter Code:	Not Inverter
Frame:	56/56H	KVA Code:	G
Frame Material:	Steel	Lifting Lugs:	No Lifting Lugs
Output @ Frequency:	2.000 HP @ 60 HZ	Locked Bearing Indicator:	No Locked Bearing
Synchronous Speed @ Frequency:	3600 RPM @ 60 HZ	Motor Lead Quantity/Wire Size:	4 @ 14 AWG, A PH
Voltage @ Frequency:	115.0 V @ 60 HZ	Motor Lead Exit:	Ko Box
	230.0 V @ 60 HZ	Motor Lead Termination:	Flying Leads
XP Division:	Not Applicable	Motor Type:	3528L
Agency Approvals:	UR	Mounting Arrangement:	F1
	CSA	Power Factor:	75
Auxillary Box:	No Auxillary Box	Product Family:	General Purpose
Auxillary Box Lead Termination:	None	Pulley End Bearing Type:	Ball
Base Indicator:	Rigid	Pulley Face Code:	Standard
Bearing Grease Type:	Polyrex EM (-20F +300F)	Pulley Shaft Indicator:	Standard
Blower:	None	Rodent Screen:	None
Current @ Voltage:	12.400 A @ 208.0 V	Shaft Extension Location:	Pulley End
	13.000 A @ 230.0 V	Shaft Ground Indicator:	No Shaft Grounding

	26.000 A @ 115.0 V	Shaft Rotation:	Reversible
Design Code:	L	Shaft Slinger Indicator:	No Slinger
Drip Cover:	No Drip Cover	Speed Code:	Single Speed
Duty Rating:	CONT	Motor Standards:	NEMA
Electrically Isolated Bearing:	Not Electrically Isolated	Starting Method:	Direct on line
Feedback Device:	NO FEEDBACK	Thermal Device - Bearing:	None
Front Face Code:	Standard	Thermal Device - Winding:	None
Front Shaft Indicator:	None	Vibration Sensor Indicator:	No Vibration Sensor
Heater Indicator:	No Heater	Winding Thermal 1:	None
		Winding Thermal 2:	None

Nameplate NP1256L										
CAT.NO.	L1317X									
SPEC.	35J384-184									
HP	2									
VOLTS	115/230									
AMP	26/13									
RPM	3450									
FRAME	56/56H				HZ	60			PH	1
SER.F.	1.15		CODE	G	DES	L		CLASS	B	
NEMA-NOM-EFF	70		PF	75						
RATING	40C AMB-CONT									
CC									USABLE AT 208V	12.4
DE	6205				ODE	6203				
ENCL	OPEN		SN							
NOT FOR USE IN USA										

Parts List		
Part Number	Description	Quantity
SA025944	SA 35J384-184	1.000 EA
RA021994	RA 35J384-184	1.000 EA
EC1850A06SP	ELEC CAP 115V 2.0 X 4.3 X	1.000 EA
NS2512A01	INSULATOR, CONDUIT BOX X	1.000 EA
35CB3007	35 CB CASTING W/.88 DIA. LEAD HOLE	1.000 EA
51XB1016A07	10-16 X 7/16 HXWSSLD SERTYB	2.000 EA
11XW1032G06	10-32 X .38, TAPTITE II, HEX WSHR SLTD U	1.000 EA
35EP3209G00	MASTER ODE,203 BRG	1.000 EA
51XW0832A07	8-32 X .44, TAPTITE II, HEX WSHR SLTD SE	2.000 EA
51XB1016A05	10-16X5/16HX WA SL SR TYB (F/S)	2.000 EA
HW5100A03	WAVY WASHER (W1543-017)	1.000 EA
35EP3210B00	MASTER DE,205 BRG,1.000SH	1.000 EA
XY1032A02	10-32 HEX NUT DIRECTIONAL SERRATION	4.000 EA
35CB4521	35 LIPPED CB LID (GALV & PHOSPH)	1.000 EA
51XW0832A07	8-32 X .44, TAPTITE II, HEX WSHR SLTD SE	4.000 EA
HW2501D13	KEY, 3/16 SQ X 1.375	1.000 EA
HA7000A04	KEY RETAINER 0.625 DIA SHAFTS	1.000 EA
85XU0407S04	4X1/4 U DRIVE PIN STAINLESS	2.000 EA
WD1000A16	2-520128-2 AMP FLAG TERMINAL(4M/RL)	2.000 EA
MJ1000A02	GREASE, POLYREX EM EXXON	0.050 LB
MG1000G27	MED CHARCOAL METALLIC GREY 400-0096	0.017 GA
LC0001A01	CONN LABEL / WARNING LABEL (LC0001 / LB1	1.000 EA
NP1256L	ALUM UL CSA CC INDUSTRIAL MOTOR A60	1.000 EA
35CB4802A02SP	CAPACITOR COVER, STAMPED X	1.000 EA

Parts List (continued)		
Part Number	Description	Quantity
HA3100A18	THRUBOLT 10-32 X 9.250	4.000 EA
SP5051A24	MODEL 35 TORQ STATIONARY SWITCH FOR "L"	1.000 EA
SP1006A01	INSULATOR MODEL 35 SWITCH	1.000 EA
LB1417	LABEL CARTON 6X4 PERFORATED BLANK ROLLS	1.000 EA
35PA1066	PKG GRP, PRINT PK1008A06	1.000 EA
MN416A01	TAG-INSTAL-MAINT no wire (2200bx) 4/22	1.000 EA
PE-0000001	ZRTG PE ASSEMBLY	1.000 EA
FE-0000001	ZRTG FE ASSEMBLY	1.000 EA

Accessories		
Part Number	Description	Multiplier
35-8764	C FACE KIT	A8
35EP1604A01SP	D-FLANGE KIT	

AC Induction Motor Performance Data

Record # 8046

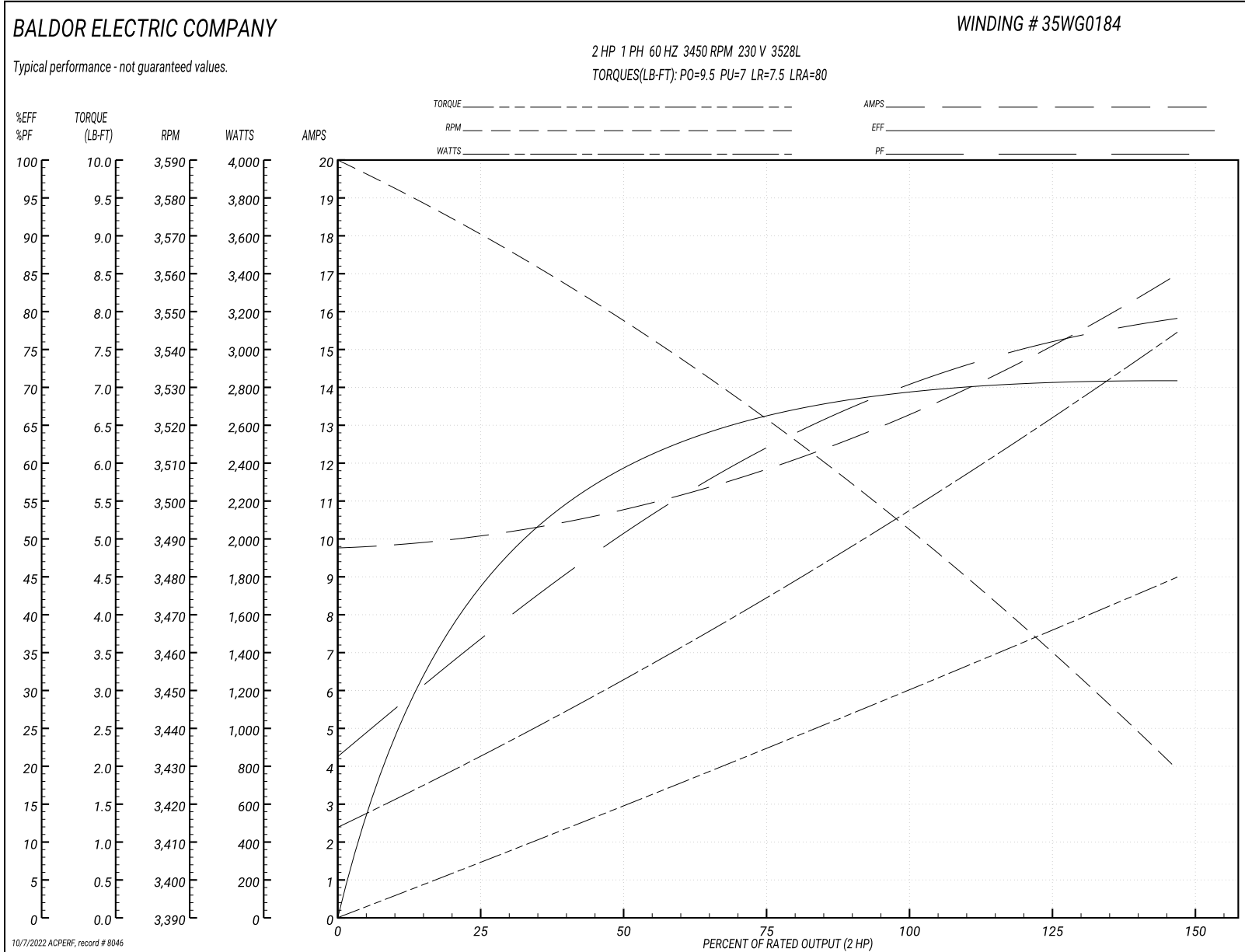
Typical performance - not guaranteed values

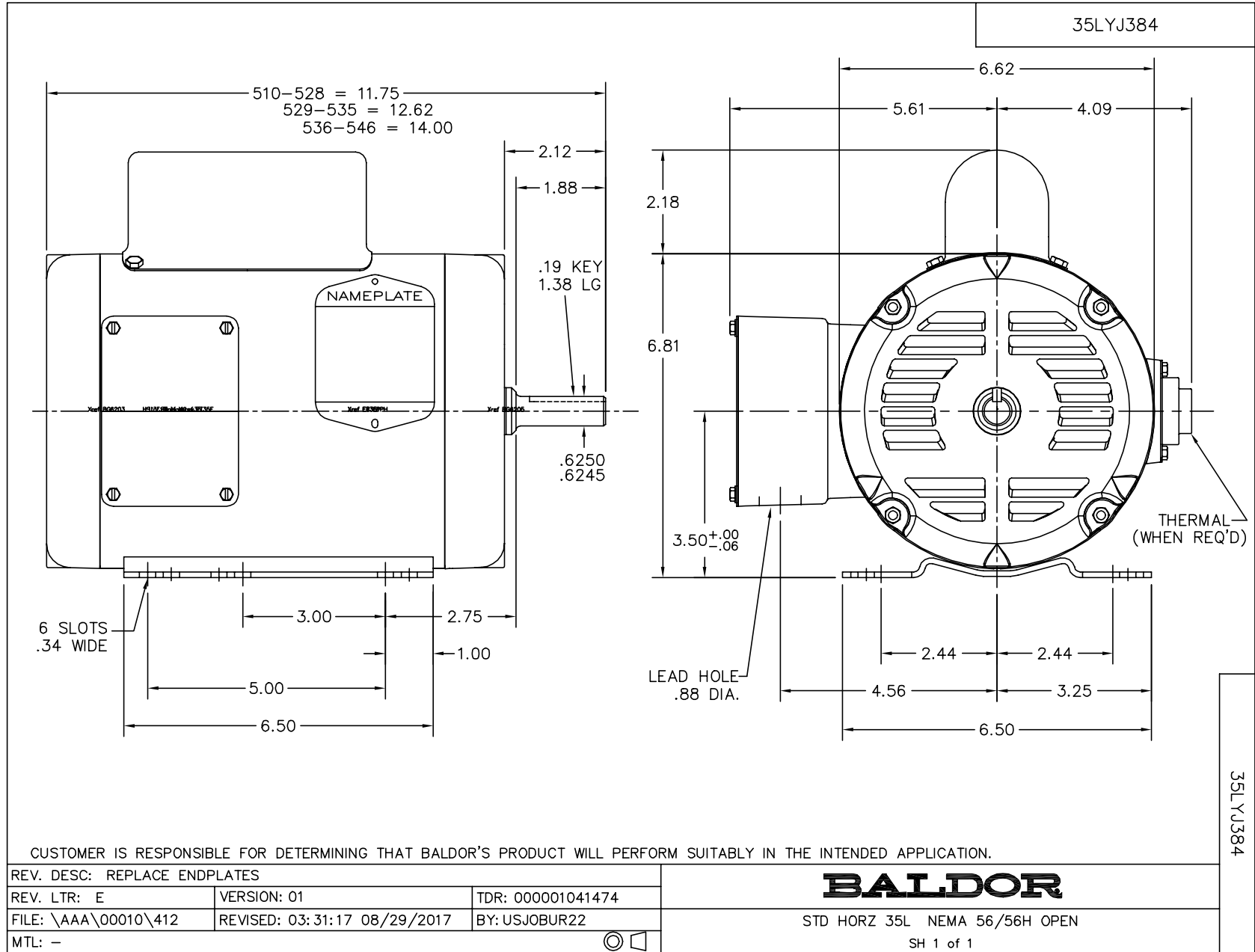
Winding: 35WG0184-R001		Type: 3528L	Enclosure: OPEN	
Nameplate Data			230 V, 60 Hz: High Voltage Connection	
Rated Output (HP)	2	Full Load Torque	3 LB-FT	
Volts	115/230	Start Configuration	direct on line	
Full Load Amps	26/13	Breakdown Torque	9.5 LB-FT	
R.P.M.	3450	Pull-up Torque	7 LB-FT	
Hz	60 Phase	Locked-rotor Torque	7.5 LB-FT	
NEMA Design Code	L KVA Code	Starting Current	80 A	
Service Factor (S.F.)	1.15	No-load Current	9.75 A	
NEMA Nom. Eff.	70 Power Factor	Line-line Res. @ 25°C	1.06 Ω A Ph 1.06 Ω B Ph	
Rating - Duty	40C AMB-CONT	Temp. Rise @ Rated Load	56°C	
S.F. Amps		Temp. Rise @ S.F. Load	78°C	

Load Characteristics 230 V, 60 Hz, 2 HP

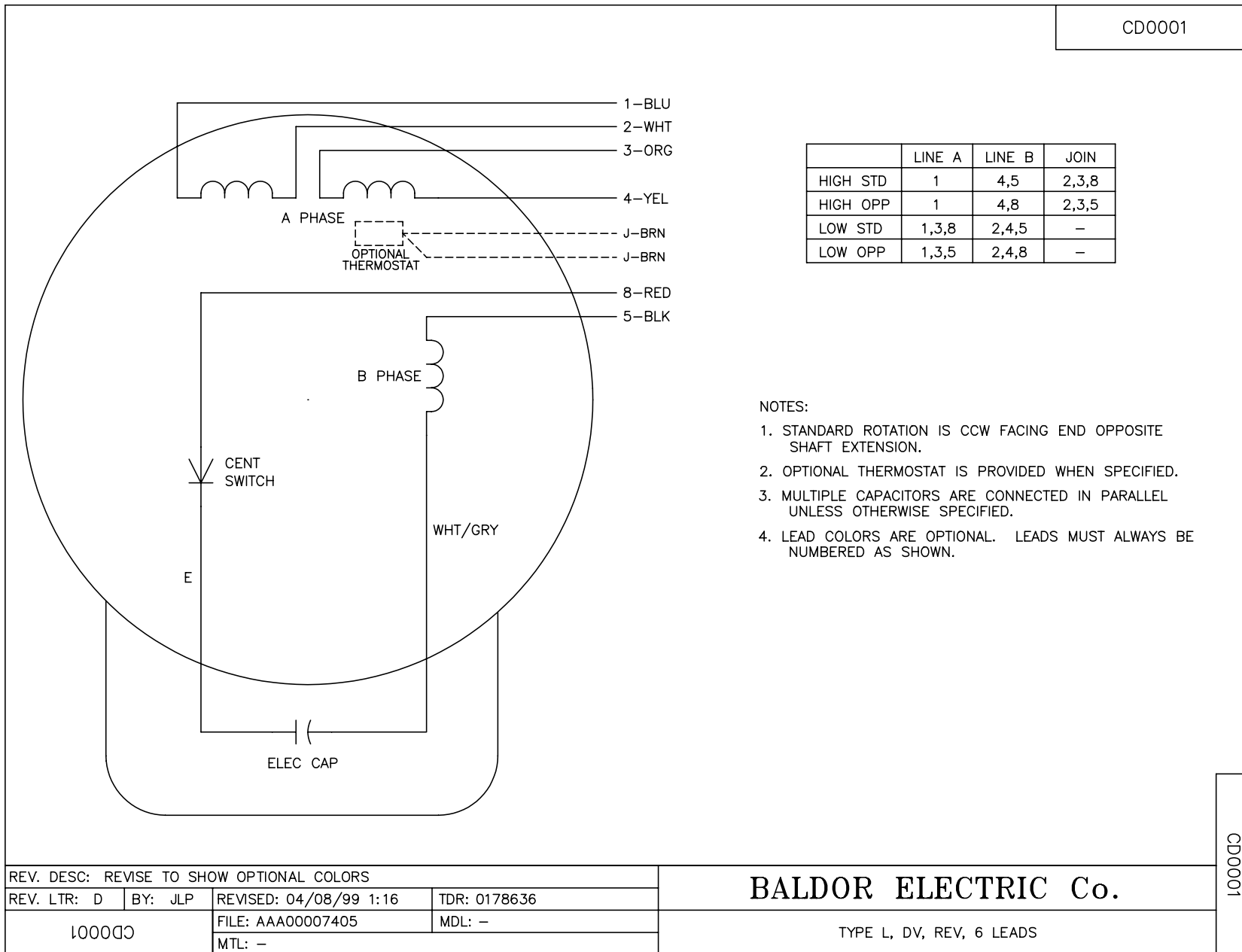
% of Rated Load	25	50	75	100	125	150	S.F.
Power Factor	37	51	62	70	77	81	0
Efficiency	43.8	59.3	66.3	69.6	70.8	70.7	0
Speed	3569	3546	3521	3494	3463	3428	0
Line amperes	10.1	10.8	11.9	13.2	15	17	14.3

Performance Graph at 230V, 60Hz, 2.0HP Typical performance - Not guaranteed values





CD0001



REV. DESC: REVISE TO SHOW OPTIONAL COLORS			
REV. LTR: D	BY: JLP	REVISED: 04/08/99 1:16	TDR: 0178636
100000		FILE: AAA00007405	MDL: -
		MTL: -	

BALDOR ELECTRIC Co.

TYPE L, DV, REV, 6 LEADS

CD0001