

BALDOR • RELIANCE

Customer information packet

L1509T

7.5HP, 3450RPM, 1PH, 60HZ, 213T, 3640LC, OPEN

Class - None

Division - Not Applicable

Specifications

Enclosure	ODTF
Frame	213T
Frame Material	Steel
Frequency	60.00 Hz
Motor Letter Type	Cap Start, Cap Run
Output @ Frequency	7.500 HP @ 60 HZ
Phase	1
Synchronous Speed @ Frequency	3600 RPM @ 60 HZ
Voltage @ Frequency	230.0 V @ 60 HZ
XP Class and Group	None
XP Division	Not Applicable
Agency Approvals	CSA UR
Ambient Temperature	40 °C
Auxillary Box	No Auxillary Box
Auxillary Box Lead Termination	None
Base Indicator	Rigid
Bearing Grease Type	Polyrex EM (-20F +300F)
Blower	None
Current @ Voltage	33.000 A @ 208.0 V 30.000 A @ 230.0 V
Design Code	L
Drip Cover	Drip Cover
Duty Rating	CONT
Efficiency @ 100% Load	82.5 %
Electrically Isolated Bearing	Not Electrically Isolated
Feedback Device	NO FEEDBACK
Front Face Code	Standard
Front Shaft Indicator	None
Heater Indicator	No Heater
High Voltage Full Load Amps	30.0 a
Insulation Class	F

Part detail

Revision	Y
Type	AC
Mech. spec.	36H282
Base	
Status	PRD/A
Elec. spec.	36WGY373
Layout	36LYH282
Eff. date	02-08-2024
CD Diagram	CD0017A02
Poles	02
Leads	2#10 A PH,2#16 B PH
Proprietary	False
Created date	01-01-0001

Inverter Code	Not Inverter
KVA Code	H
Lifting Lugs	No Lifting Lugs
Locked Bearing Indicator	No Locked Bearing
Motor Lead Exit	Ko Box
Motor Lead Quantity/Wire Size	2 @ 10 AWG, A PH
Motor Lead Termination	Flying Leads
Motor Standards	NEMA
Motor Type	3640LC
Mounting Arrangement	F1
Number of Poles	2
Overall Length	18.36 IN
Power Factor	96
Product Family	General Purpose
Pulley End Bearing Type	Ball
Pulley Face Code	Standard
Pulley Shaft Indicator	Standard
Rodent Screen	None
Service Factor	1.15
Shaft Diameter	1.375 IN
Shaft Extension Location	Pulley End
Shaft Ground Indicator	No Shaft Grounding
Shaft Rotation	Reversible
Shaft Slinger Indicator	No Slinger
Speed	3450 rpm
Speed Code	Single Speed
Starting Method	Direct on line
Thermal Device - Bearing	None
Thermal Device - Winding	None
Vibration Sensor Indicator	No Vibration Sensor
Winding Thermal 1	None
Winding Thermal 2	None

Nameplate

NP1256L									
CAT.NO.	L1509T								
SPEC.	36H282Y373G2								
HP	7.5								
VOLTS	230								
AMP	30								
RPM	3450								
FRAME	213T		HZ	60		PH	1		
SER.F.	1.15	CODE	H	DES	L	CLASS	F		
NEMA-NOM-EFF	82.5	PF	96						
RATING	40C AMB-CONT								
CC									
DE	6207		ODE	6205					
ENCL	ODTF	SN							

Parts list

Part number	Description	Quantity
SA036318	SA 36H282Y373G2	1.000 ea
RA032344	RA 36H282Y373G2	1.000 ea
HA6362ZP	LIFTING LUG FOR 36 FRAME MOTORS.	2.000 ea
36CB3004	36 CB CASTING W/1.09 DIA LEAD HOLE @ 6:0	1.000 ea
51XB1016A08	10-16X 1/2HXWSSLD SERTYB	2.000 ea
11XW1032G06	10-32 X .38, TAPTITE II, HEX WSHR SLTD U	1.000 ea
HW3001B01	BRASS CUP WASHER, FOR #10 SCREW	1.000 ea
36EP3204F00	MASTER ODE,205 BRG,.998SH,GRSR,DRIP CVR	1.000 ea
HW4500A01	1641B(ALEMITE)400 UNIV, GREASE FITT	1.000 ea
13XF0832A08	8-32 X.50 PAN HD,SLTD, TYPE F SCREW, ZIN	2.000 ea
SP1008A01	BAFFLE, MODEL 36 & 37	1.000 ea
51XW2520A10	.25-20 X .62, TAPTITE II, HEX WSHR SLTD	2.000 ea
HW5100A05	WVY WSHR F/205 & 304 BRGS	1.000 ea
36EP3203A01	PULLEY ENDPLATE 36 FRAME OPEN 207 BRGW/G	1.000 ea
HW4500A01	1641B(ALEMITE)400 UNIV, GREASE FITT	1.000 ea
HA3101A58	THRUBOLT 1/4-20 X 12.875 TDR #45540	4.000 ea
XY2520A12	1/4-20 HEX NUT, DIRECTIONAL SERRATIONS	4.000 ea
51XB1214A16	12-14X1.00 HXWSSLD SERTYB	1.000 ea
36FH4012A23	DRIP COVER NOTCH W/ PRIMER	1.000 ea
51XW1032A06	10-32 X .38, TAPTITE II, HEX WSHR SLTD S	3.000 ea
36CB4516	750LIPPED CB LID - GALVANNEAL	1.000 ea
51XW0832A07	8-32 X .44, TAPTITE II, HEX WSHR SLTD SE	4.000 ea
HW2501F21	KEY, 5/16 SQ X 2.375	1.000 ea
HA7000A02	KEY RETAINER RING, 1 1/8 DIA, 1 3/8 DIA	1.000 ea
85XU0407S04	4X1/4 U DRIVE PIN STAINLESS	2.000 ea
36CB5005A13	CAPACITOR BOX KIT, 36CB3800Z, EC4270C06	1.000 ea
MJ1000A02	GREASE, POLYREX EM EXXON	0.050 lb
36FN3000A01SP	EXFN, PLASTIC, 7.00 OD, .912 ID	1.000 ea
MG1050G01	MED CHARCOAL METALLIC GREY	0.022 ga
SP5172A05	37 TYPE LC TORQ STAT SW LEAD ASSEMBLY	1.000 ea
LC0017	CONN LABEL-1 PHASE-SINGLE VOLT-REV ROTNO	1.000 ea

NP1256L	ALUM UL CC INDUSTRIAL MOTOR A60	1.000 ea
36PA1001	PKG GRP, PRINT PK1017A06	1.000 ea
MN416A01	TAG-INSTAL-MAINT no wire (2100bx)4/22	1.000 ea
LB1624	COMBINED WARNING LABEL, ISO/ANSI PICTOGR	1.000 ea
FE-0000001	ZRTG FE ASSEMBLY	1.000 ea

Accessories

Part number	Description	Multiplier
36-1206B	C FACE KIT 213-5TC ODP	A8

AC Induction Motor Performance Data

Record # 23623

Typical performance - not guaranteed values

Winding: 36WGY373-R003		Type: 3640LC	Enclosure: OPAO	
Nameplate Data			230 V, 60 Hz: Single Voltage Motor	
Rated Output (HP)	7.5	Full Load Torque	11.4 LB-FT	
Volts	208-230	Start Configuration	direct on line	
Full Load Amps	33-30	Breakdown Torque	31.6 LB-FT	
R.P.M.	3450	Pull-up Torque	24.6 LB-FT	
Hz	60 Phase	Locked-rotor Torque	30.9 LB-FT	
NEMA Design Code	L KVA Code	Starting Current	215 A	
Service Factor (S.F.)	1.15	No-load Current	7.35 A	
NEMA Nom. Eff.	82.5 Power Factor	Line-line Res. @ 25°C	0.25 Ω A Ph 0.881 Ω B Ph	
Rating - Duty	40C AMB-CONT	Temp. Rise @ Rated Load	60°C	
S.F. Amps		Temp. Rise @ S.F. Load	74°C	

Load Characteristics 230 V, 60 Hz, 7.5 HP

% of Rated Load	25	50	75	100	125	150	S.F.
Power Factor	82	92	94	96	96	96	96
Efficiency	65.8	78.7	82.9	82	80.4	77.2	81
Speed	3562	3531	3498	3458	3413	3358	3431
Line amperes	11.1	16.7	23.3	31.1	39.6	49.7	36.2

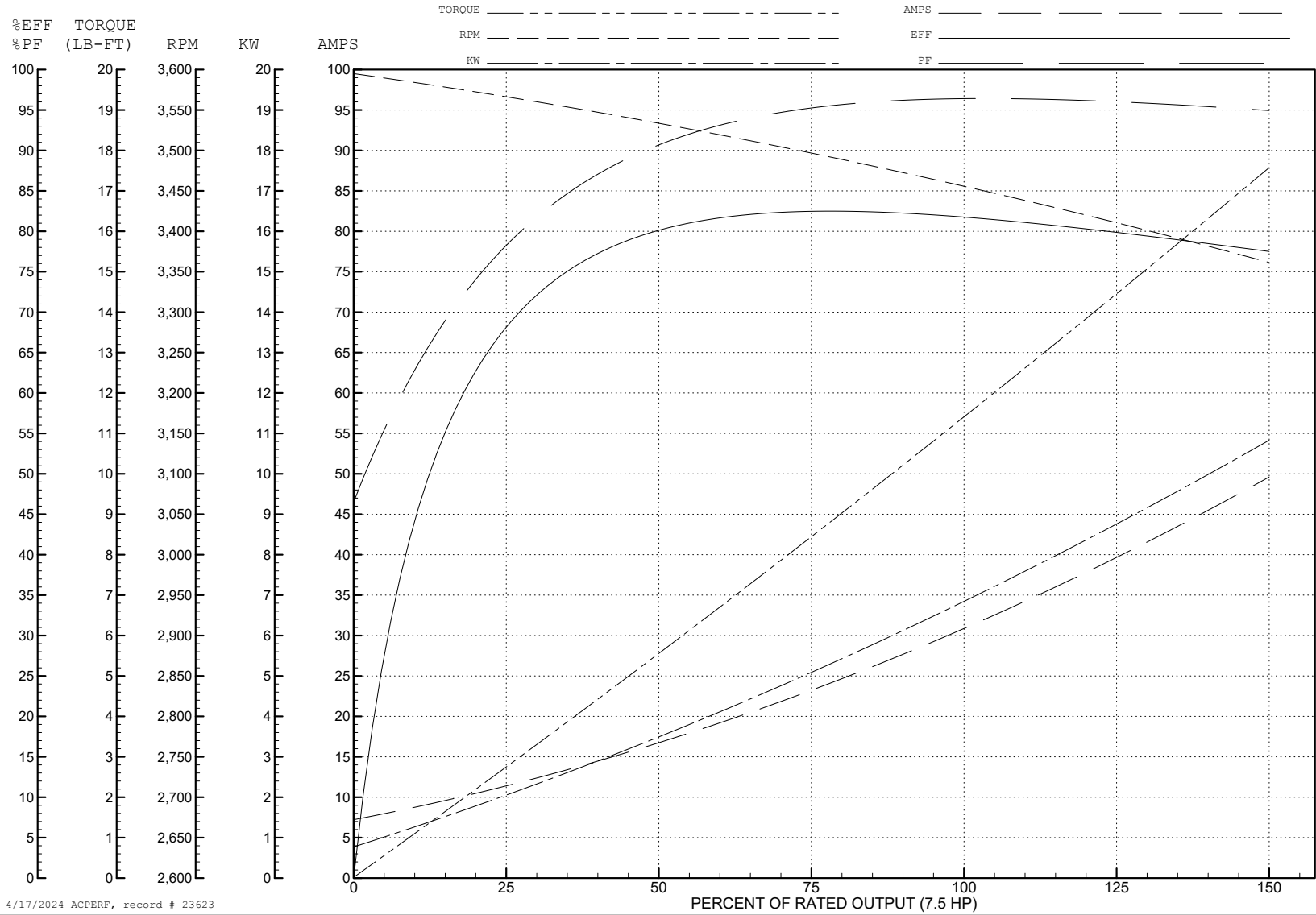
ABB Motors and Mechanical Inc.

WINDING # 36WGY373

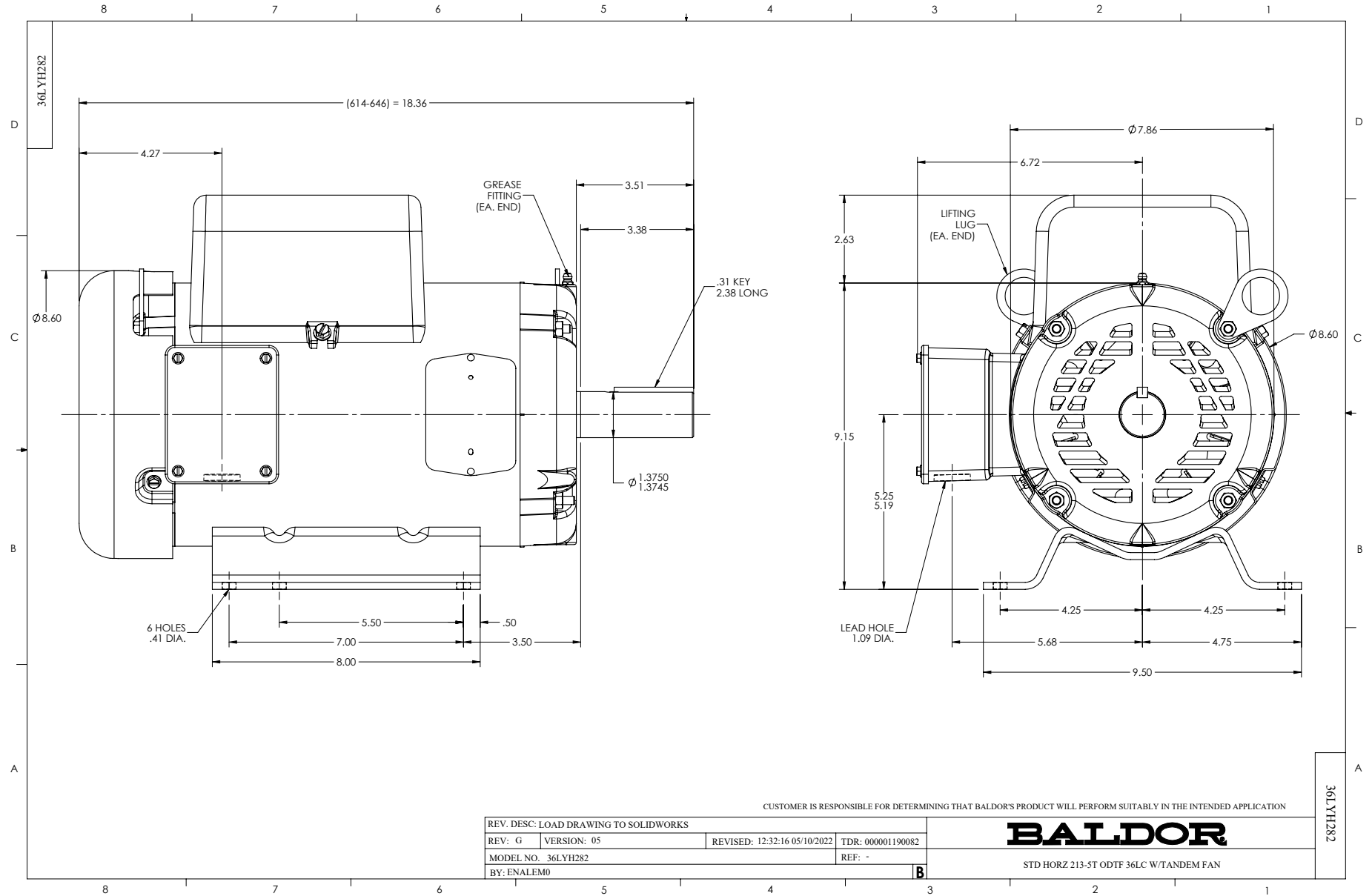
Typical performance - not guaranteed values.

7.5 HP 1 PH 60 HZ 3450 RPM 230 V 3640LC

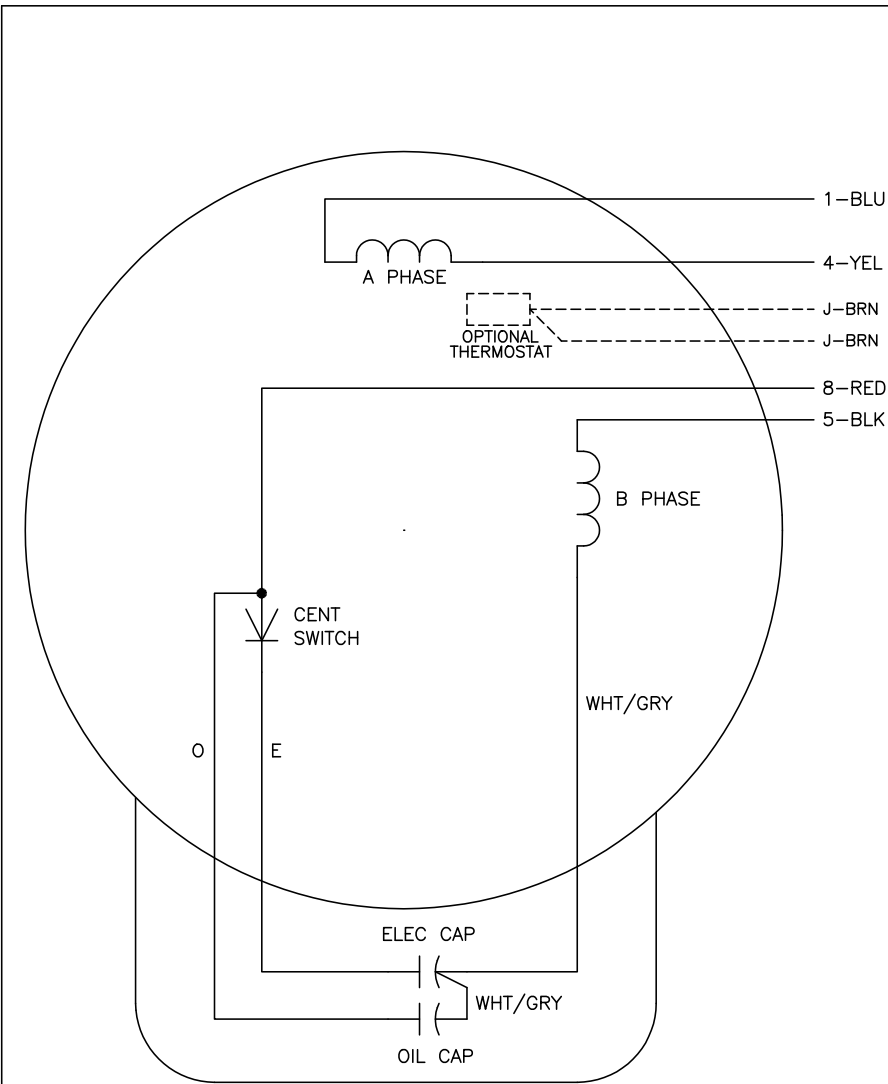
TORQUES (LB-FT): PO=31.6 PU=24.6 LR=30.9 LRA=215



4/17/2024 ACPERF, record # 23623



CD0017A02



	LINE A	LINE B
STD	1,8	4,5
OPP	1,5	4,8

NOTES:

1. STANDARD ROTATION IS CCW FACING END OPPOSITE SHAFT EXTENSION.
2. OPTIONAL THERMOSTAT IS PROVIDED WHEN SPECIFIED.
3. MULTIPLE CAPACITORS ARE CONNECTED IN PARALLEL UNLESS OTHERWISE SPECIFIED.
4. LEAD COLORS ARE OPTIONAL. LEADS MUST ALWAYS BE NUMBERED AS SHOWN.

CD0017A02

REV. DESC: REVISE TO SHOW OPTIONAL COLORS			
REV. LTR: B	BY: JLP	REVISED: 04/09/99 11:30	TDR: 0178636
CD0017A02		FILE: AAA00007514	MDL: -
		MTL: -	

BALDOR ELECTRIC Co.

TYPE LC, SV, REV, 4 LEADS