

**BALDOR • RELIANCE**

---

# Customer information packet

## L3608TM

5HP, 3450RPM, 1PH, 60HZ, 184T, 3640LC, TEFC, F1

Class - None

Division - Not Applicable

## Specifications

Enclosure	TEFC
Frame	184T
Frame Material	Steel
Frequency	60.00 Hz
Haz Area Class and Group	None
Haz Area Division	Not Applicable
Motor Letter Type	Cap Start, Cap Run
Output @ Frequency	5.000 HP @ 60 HZ
Phase	1
Synchronous Speed @ Frequency	3600 RPM @ 60 HZ
Voltage @ Frequency	230.0 V @ 60 HZ
Agency Approvals	UR CSA
Ambient Temperature	40 °C
Auxillary Box	No Auxillary Box
Auxillary Box Lead Termination	None
Base Indicator	Rigid
Bearing Grease Type	Polyrex EM (-20F +300F)
Blower	None
Current @ Voltage	19.500 A @ 230.0 V
Design Code	L
Drip Cover	No Drip Cover
Duty Rating	CONT
Efficiency @ 100% Load	83.0 %
Electrically Isolated Bearing	Not Electrically Isolated
Feedback Device	NO FEEDBACK
Front Face Code	Standard
Front Shaft Indicator	None
Heater Indicator	No Heater
High Voltage Full Load Amps	19.5 a
Insulation Class	F
Inverter Code	Not Inverter

## Part detail

Revision	AV
Type	AC
Mech. spec.	36F227
Base	
Status	PRD/A
Elec. spec.	36WGW957
Layout	36LYF227
Eff. date	05-09-2024
CD Diagram	CD0002A02
Poles	02
Leads	2#14 A PH,3#16 B&J
Proprietary	False
Created date	01-01-0001

<b>KVA Code</b>	G
<b>Lifting Lugs</b>	No Lifting Lugs
<b>Locked Bearing Indicator</b>	No Locked Bearing
<b>Motor Lead Exit</b>	Ko Box
<b>Motor Lead Quantity/Wire Size</b>	2 @ 14 AWG, A PH
<b>Motor Lead Termination</b>	Flying Leads
<b>Motor Standards</b>	NEMA
<b>Motor Type</b>	3640LC
<b>Mounting Arrangement</b>	F1
<b>Number of Poles</b>	2
<b>Overall Length</b>	18.04 IN
<b>Power Factor</b>	99
<b>Product Family</b>	General Purpose
<b>Pulley End Bearing Type</b>	Ball
<b>Pulley Face Code</b>	Standard
<b>Pulley Shaft Indicator</b>	Standard
<b>Rodent Screen</b>	None
<b>Service Factor</b>	1.00
<b>Shaft Diameter</b>	1.125 IN
<b>Shaft Extension Location</b>	Pulley End
<b>Shaft Ground Indicator</b>	No Shaft Grounding
<b>Shaft Rotation</b>	Reversible
<b>Shaft Slinger Indicator</b>	No Slinger
<b>Speed</b>	3450 rpm
<b>Speed Code</b>	Single Speed
<b>Starting Method</b>	Direct on line
<b>Thermal Device - Bearing</b>	None
<b>Thermal Device - Winding</b>	Do Not Use
<b>Vibration Sensor Indicator</b>	No Vibration Sensor
<b>Winding Thermal 1</b>	Manual Thermal Overload
<b>Winding Thermal 1 Location</b>	KO
<b>Winding Thermal 2</b>	None

**Nameplate**

<b>NP1257L</b>									
<b>CAT.NO.</b>	L3608TM								
<b>SPEC.</b>	36F227W957								
<b>HP</b>	5								
<b>VOLTS</b>	230								
<b>AMP</b>	19.5								
<b>RPM</b>	3450								
<b>FRAME</b>	184T			<b>HZ</b>	60		<b>PH</b>	1	
<b>SER.F.</b>	1.00	<b>CODE</b>	G	<b>DES</b>	L	<b>CL</b>	F		
<b>NEMA-NOM-EFF</b>	83	<b>PF</b>	99						
<b>RATING</b>	40C AMB-CONT								
<b>CC</b>									
<b>DE</b>	6206	<b>ODE</b>	6205						
<b>ENCL</b>	TEFC	<b>SN</b>							

## Parts list

Part number	Description	Quantity
SA034863	SA 36F227W957	1.000 ea
RA030891	RA 36F227W957	1.000 ea
TPBRT25DB	THERMAL 1PH 1.25 MAN 120CWELDED	1.000 ea
TP5059	GENERIC WELDED THERMAL, 7" LEAD KIT	1.000 ea
36CB3004A02	36 CB 1.09 @ 6, 1.25 MTO @ 3	1.000 ea
36GS1000SP	GASKET-CONDUIT BOX, .06 THICK #SV-330 LE	1.000 ea
51XB1016A08	10-16X 1/2HXWSSLD SERTYB	2.000 ea
11XW1032G06	10-32 X .38, TAPTITE II, HEX WSHR SLTD U	1.000 ea
HA6015A09	THERMAL RETAINER PLATED	1.000 ea
51XB1214A10	12-14 X 5/8HX WS SL SR TYBX	2.000 ea
36EP3104A01	FREP MACH ASSEMBLY FOR ROUTING	1.000 ea
HW4500A01	1641B(ALEMITE)400 UNIV, GREASE FITT	1.000 ea
13XF0832A08	8-32 X.50 PAN HD,SLTD, TYPE F SCREW, ZIN	2.000 ea
36GS3000	GASKET, CAPACITOR COVER LEXIDE	1.000 ea
51XB1016A05	10-16X5/16HX WA SL SR TYB (F/S)	2.000 ea
10XN2520A12	1/4-20 X 3/4 HEX HEAD CAP	2.000 ea
HW5100A05	WVY WSHR F/205 & 304 BRGS	1.000 ea
36EP3100A01SP	PUEP ASSEMBLY FOR ROUTING PURPOSES	1.000 ea
HW4500A01	1641B(ALEMITE)400 UNIV, GREASE FITT	1.000 ea
XY2520A12	1/4-20 HEX NUT, DIRECTIONAL SERRATIONS	4.000 ea
51XB1214A16	12-14X1.00 HXWSSLD SERTYB	1.000 ea
51XW1032A06	10-32 X .38, TAPTITE II, HEX WSHR SLTD S	3.000 ea
36CB4516	750LIPPED CB LID - GALVANNEAL	1.000 ea
37GS1001	GASKET, CONDUIT BOX LID, .06 THICK LEXID	1.000 ea
51XW0832A07	8-32 X .44, TAPTITE II, HEX WSHR SLTD SE	4.000 ea
HW2501E16	KEY, 1/4 SQ X 1.750	1.000 ea
HA7000A02	KEY RETAINER RING, 1 1/8 DIA, 1 3/8 DIA	1.000 ea
85XU0407S04	4X1/4 U DRIVE PIN STAINLESS	2.000 ea
51XW0832A07	8-32 X .44, TAPTITE II, HEX WSHR SLTD SE	2.000 ea
MJ1000A02	GREASE, POLYREX EM EXXON	0.050 lb
36FH4009A124	IEC FH W/GRSR,GRILL,NO DIMPLES,PRIMER	1.000 ea

MG1050G01	CELEROL MEDIUM CHARCOAL METALLIC GRAY	0.022 ga
SP5172A05	37 TYPE LC TORQ STAT SW LEAD ASSEMBLY	1.000 ea
WD1000A15	3-520132-2 AMP FLAG (4M/RL NON-CANC/NON-	6.000 ea
HA3101A40	THRUBOLT 1/4-20 X 12.687	4.000 ea
35FN3002A04SP	EXFN, PLASTIC, 6.376 OD, .906 ID W/KEY	1.000 ea
LB1624	COMBINED WARNING LABEL, ISO/ANSI PICTOGR	1.000 ea
LB1087	LABEL,MANUAL RESET (ROLL LABEL)	1.000 ea
HA6362ZP	LIFTING LUG FOR 36 FRAME MOTORS.	2.000 ea
36CB5005A11	CAPACITOR BOX KIT, 36CB3800Z, EC1161C06	1.000 ea
LC0002	CONNECTION LABEL	1.000 ea
NP1257L	ALUM UL CC THERMAL REV MTG	1.000 ea
36PA1001	PKG GRP, PRINT PK1017A06	1.000 ea
MN416A01	TAG-INSTAL-MAINT no wire (2500bx)4/22	1.000 ea

**Accessories**

<b>Part number</b>	<b>Description</b>	<b>Multiplier</b>
36-3301	C FACE KIT	A8
36EP1304A62SP	FLANGE MTD ENDPLATE 182-4TD -ENCL (LESS	A8

**AC Induction Motor Performance Data**

Record # 10892

Typical performance - not guaranteed values

<b>Winding: 36WGW957-R001</b>		<b>Type: 3640LC</b>		<b>Enclosure: TEFC</b>	
<b>Nameplate Data</b>			<b>230 V, 60 Hz: Single Voltage Motor</b>		
<b>Rated Output (HP)</b>	5	<b>Full Load Torque</b>	7.5 LB-FT		
<b>Volts</b>	230	<b>Start Configuration</b>	direct on line		
<b>Full Load Amps</b>	19.5	<b>Breakdown Torque</b>	26 LB-FT		
<b>R.P.M.</b>	3450	<b>Pull-up Torque</b>	12.5 LB-FT		
<b>Hz</b>	60	<b>Phase</b>	1	<b>Locked-rotor Torque</b>	15 LB-FT
<b>NEMA Design Code</b>	L	<b>KVA Code</b>	G	<b>Starting Current</b>	128 A
<b>Service Factor (S.F.)</b>			1	<b>No-load Current</b>	2.3 A
<b>NEMA Nom. Eff.</b>	83	<b>Power Factor</b>	99	<b>Line-line Res. @ 25°C</b>	0.38 Ω A Ph 1.02 Ω B Ph
<b>Rating - Duty</b>	40C AMB-CONT			<b>Temp. Rise @ Rated Load</b>	67°C

**Load Characteristics 230 V, 60 Hz, 5 HP**

<b>% of Rated Load</b>	<b>25</b>	<b>50</b>	<b>75</b>	<b>100</b>	<b>125</b>	<b>150</b>
<b>Power Factor</b>	98	98	98	98	97	97
<b>Efficiency</b>	66.4	81.5	83.9	83.9	82.1	79.2
<b>Speed</b>	3565	3539	3507	3472	3430	3389
<b>Line amperes</b>	6.5	10.4	14.9	19.6	24.7	29.9



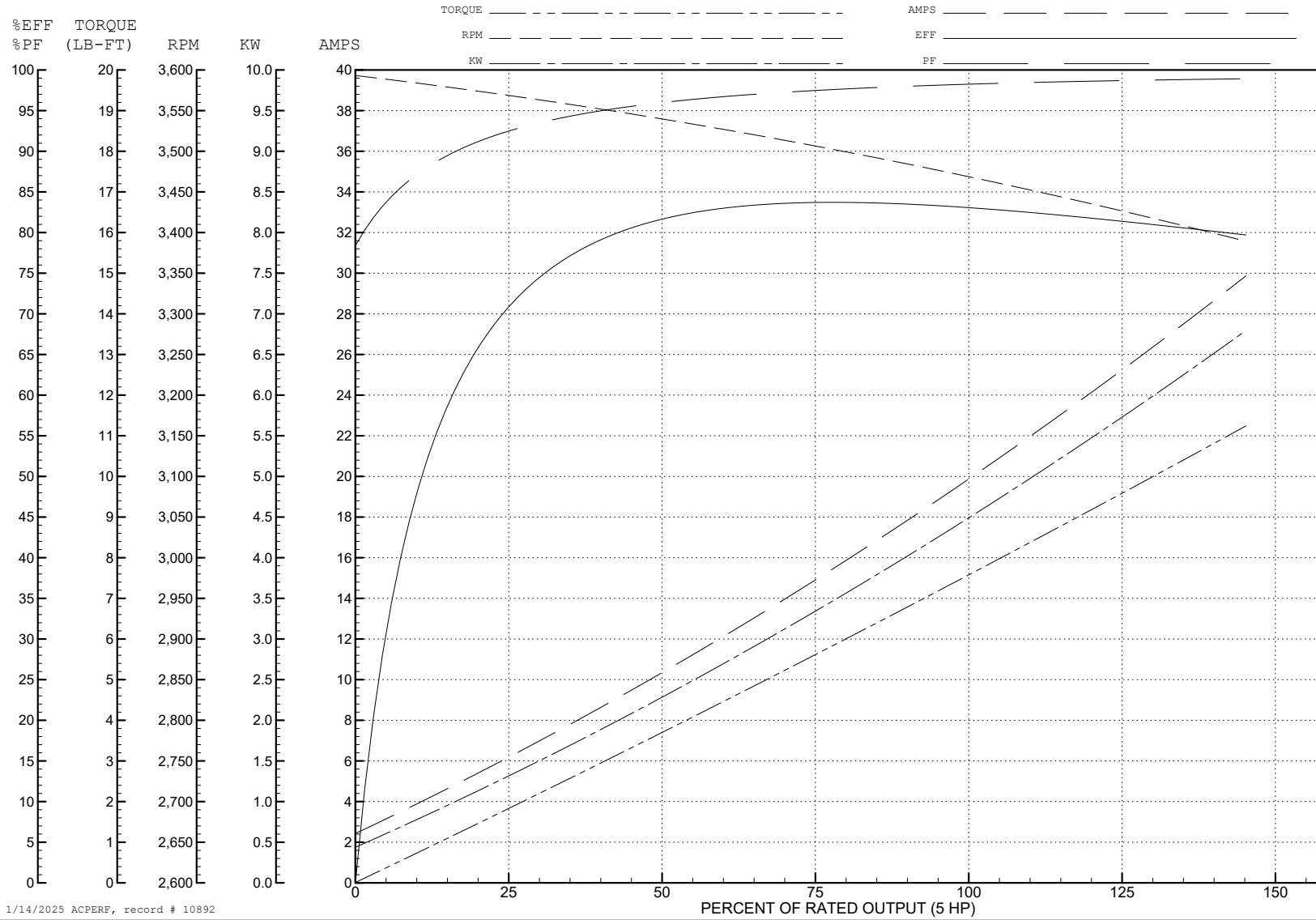
ABB Motors and Mechanical Inc.

WINDING # 36WGW957

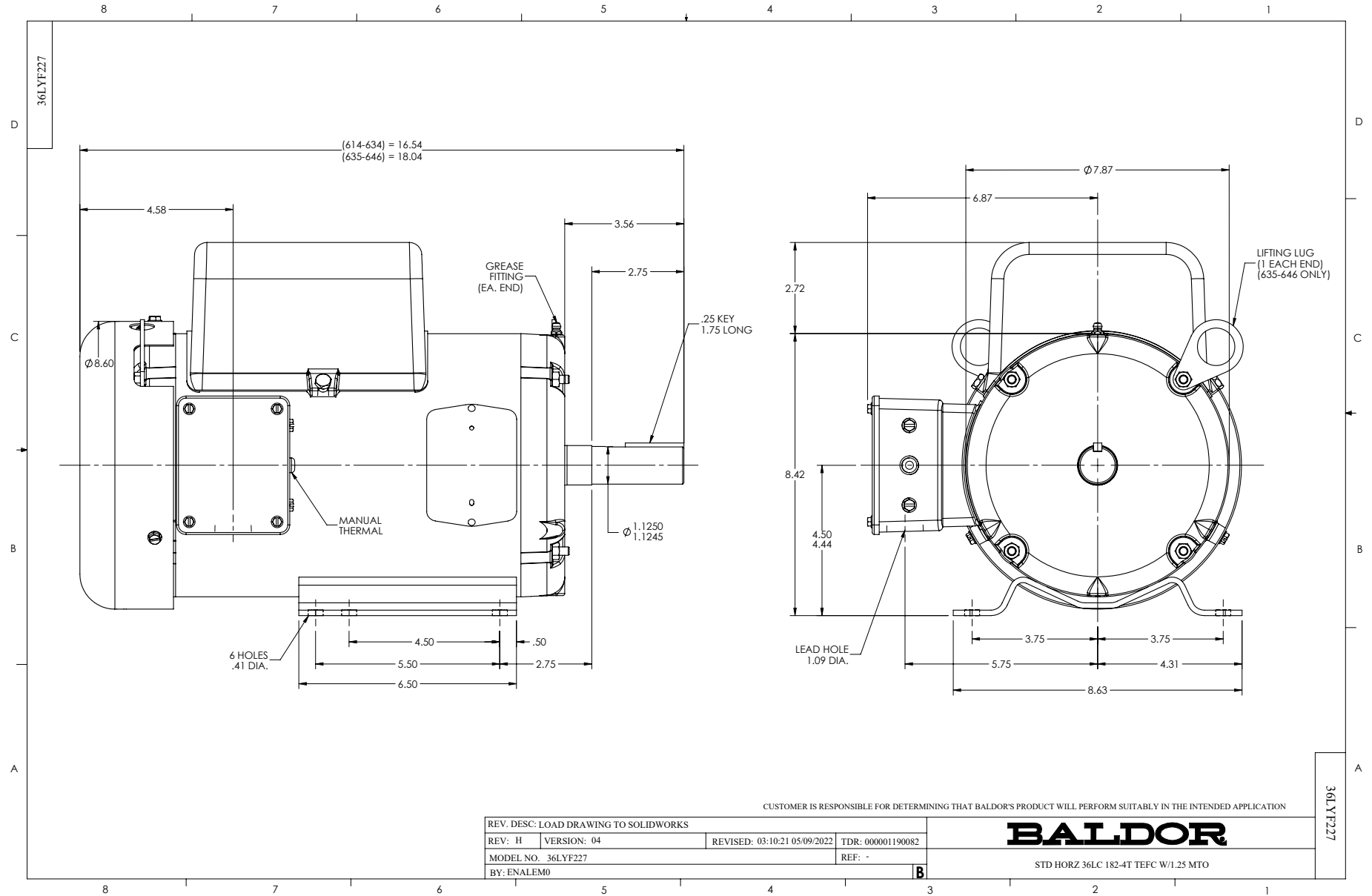
Typical performance - not guaranteed values.

5 HP 1 PH 60 HZ 3450 RPM 230 V 3640LC

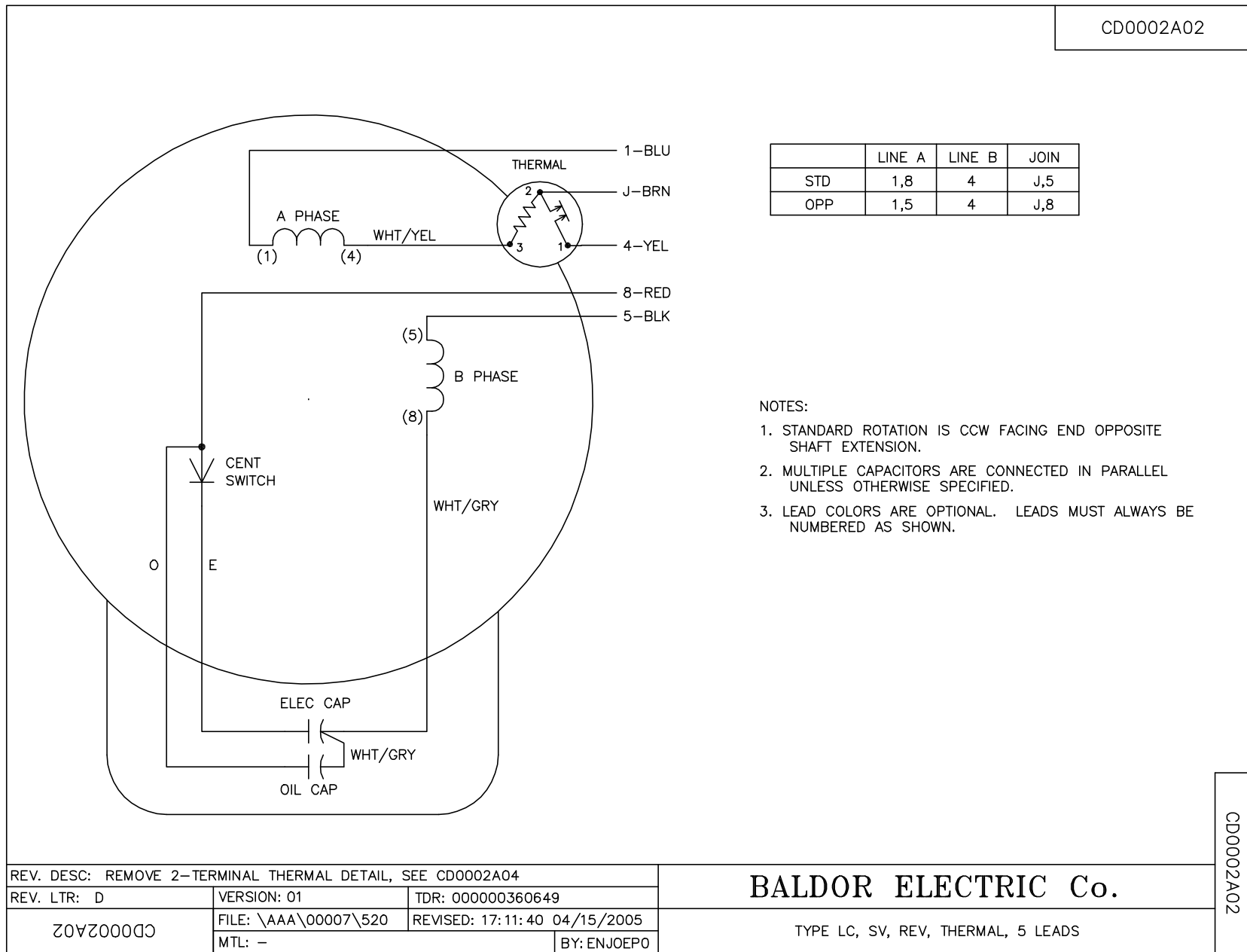
TORQUES (LB-FT): PO=26 PU=12.5 LR=15 LRA=128



1/14/2025 ACPERF, record # 10892



CD0002A02



	LINE A	LINE B	JOIN
STD	1,8	4	J,5
OPP	1,5	4	J,8

NOTES:

1. STANDARD ROTATION IS CCW FACING END OPPOSITE SHAFT EXTENSION.
2. MULTIPLE CAPACITORS ARE CONNECTED IN PARALLEL UNLESS OTHERWISE SPECIFIED.
3. LEAD COLORS ARE OPTIONAL. LEADS MUST ALWAYS BE NUMBERED AS SHOWN.

REV. DESC: REMOVE 2-TERMINAL THERMAL DETAIL, SEE CD0002A04		
REV. LTR: D	VERSION: 01	TDR: 000000360649
CD0002A02	FILE: \AAA\00007\520	REVISED: 17:11:40 04/15/2005
	MTL: -	BY: ENJOEPO

**BALDOR ELECTRIC Co.**

TYPE LC, SV, REV, THERMAL, 5 LEADS

CD0002A02