

ABB BALDOR RELIANCE III

Customer information packet

L3609T-50

3/2.2KW IEC60034-30, 1440RPM, 1PH, 50HZ, 18

Class - None

Division - Not Applicable

Specifications

Enclosure	TEFC
Frame	184T
Frame Material	Steel
Frequency	50.00 Hz
Haz Area Class and Group	None
Haz Area Division	Not Applicable
Motor Letter Type	Cap Start, Cap Run
Output @ Frequency	2.200 KW @ 50 HZ
Phase	1
Synchronous Speed @ Frequency	1500 RPM @ 50 HZ
Voltage @ Frequency	220.0 V @ 50 HZ
Agency Approvals	C UR US WEEE UKCA CURUS CE
Ambient Temperature	40 °C
Auxiliary Box	NO AUXILLARY BOX
Auxiliary Box Lead Termination	None
Base Indicator	Rigid
Bearing Grease Type	Polyrex EM (-20F +300F)
Blower	None
Current @ Voltage	12.000 A @ 220.0 V
Design Code	-
Drip Cover	No Drip Cover
Duty Rating	CONT
Efficiency @ 100% Load	84.3 %
Electrically Isolated Bearing	Not Electrically Isolated
Feedback Device	NO FEEDBACK
Front Shaft Indicator	None
Heater Indicator	No Heater
High Voltage Full Load Amps	12.0 a

Part Detail

Revision	G
Type	AC
Mech. spec.	36E004
Base	
Status	PRD/A
Elec. spec.	36WGQ058
Layout	36LYE004
Eff. date	07-17-2025
CD Diagram	CD0017A02
Poles	04
Leads	2#14 A PH,2#16 B PH Y
Proprietary	False
Created date	03-13-2023

Insulation Class	F
Inverter Code	Not Inverter
KVA Code	G
Lifting Lugs	Standard Lifting Lugs
Locked Bearing Indicator	No Locked Bearing
Motor Lead Quantity/Wire Size	2 @ 14 AWG, A PH
Motor Lead Termination	Flying Leads
Motor Standards	NEMA
Motor Type	3646LC
Mounting Arrangement	F1
Number of Poles	4
Overall Length	18.06 IN
Power Factor	98
Product Family	General Purpose
Pulley End Bearing Type	Ball
Pulley Face Code	Standard
Pulley Shaft Indicator	Standard
Rodent Screen	None
RoHS Status	ROHS COMPLIANT
Service Factor	1.15
Shaft Diameter	1.125 IN
Shaft Ground Indicator	No Shaft Grounding
Shaft Rotation	Reversible
Shaft Slinger Indicator	No Slinger
Speed	1440 rpm
Speed Code	Single Speed
Starting Method	Direct on line
Thermal Device - Bearing	None
Thermal Device - Winding	None
Vibration Sensor Indicator	No Vibration Sensor
Winding Thermal 1	None
Winding Thermal 2	None

Nameplate

NP1372L	
CAT.NO.	L3609T-50
SPEC.	36E004Q058
HP	3/2.2kw IEC60034-30
VOLTS	220
AMP	12
R.P.M. (1/MIN)	1440
FRAME	184T HZ 50 PH 1
SER.F.	1.15 CODE G DES - CL F
NEMA-NOM-EFF	84.3 PF 98
RATING	40C AMB-S1 CONT
CC	IP 4, IC411 44KG
DE	6206 ODE 6205
ENCL	TEFC SN
	IE2-50HZ 85 (75%),83 (50%)

Parts List

Part number	Description	Quantity
SA412279	SA 36E004Q058	1.000 ea
RA403963	RA 36E004Q058	1.000 ea
OC3050F09SP	CAPACITOR 50 MFD 370 VAC	1.000 ea
EC1216D06	ELEC CAP, 216-259MFD, 330V, 2.06D X 4.38	2.000 ea
36CB3004	36 CB CASTING W/1.09 DIA LEAD HOLE @ 6:0	1.000 ea
36GS1000SP	GASKET-CONDUIT BOX, .06 THICK #SV-330 LE	1.000 ea
51XB1016A08	10-16X 1/2HXWSSLD SERTYB	2.000 ea
11XW1032G06	10-32 X .38, TAPTITE II, HEX WSHR SLTD U	1.000 ea
HW3001B01	BRASS CUP WASHER, FOR #10 SCREW	1.000 ea
36EP3104A01	FREP MACH W/GRSR, RAISED FH PADS	1.000 ea
HW4500A01	1641B(ALEMITE)400 UNIV, GREASE FITT	1.000 ea
13XF0832A08	8-32 X.50 PAN HD,SLTD, TYPE F SCREW, ZIN	2.000 ea
36GS3000	GASKET, CAPACITOR COVER LEXIDE	1.000 ea
51XW2520A10	.25-20 X .62, TAPTITE II, HEX WSHR SLTD	2.000 ea
HW5100A05	WVY WSHR F/205 & 304 BRGS	1.000 ea
36EP3100A01SP	PUEP ASSEMBLY FOR ROUTING PURPOSES	1.000 ea
HW4500A01	1641B(ALEMITE)400 UNIV, GREASE FITT	1.000 ea
XY2520A12	1/4-20 HEX NUT, DIRECTIONAL SERRATIONS	4.000 ea
51XB1214A16	12-14X1.00 HXWSSLD SERTYB	1.000 ea
51XW1032A06	10-32 X .38, TAPTITE II, HEX WSHR SLTD S	3.000 ea
36CB4516	750LIPPED CB LID - GALVANNEAL	1.000 ea
37GS1001SP	GASKET, CONDUIT BOX LID, .06 THICK LEXID	1.000 ea
51XW0832A07	8-32 X .44, TAPTITE II, HEX WSHR SLTD SE	4.000 ea
HW2501E16	KEY, 1/4 SQ X 1.750	1.000 ea
HA7000A02	KEY RETAINER RING, 1 1/8 DIA, 1 3/8 DIA	1.000 ea
85XU0407S04	4X1/4 U DRIVE PIN STAINLESS	2.000 ea
HA6362ZP	LIFTING LUG FOR 36 FRAME MOTORS.	2.000 ea
36CB3800SP	CAPACITOR COVER, CAST	1.000 ea
HA7010A01	CAPACITOR RETENTION CLAMP, 6.562 LONG	1.000 ea
MJ1000A02	GREASE, POLYREX EM EXXON	0.050 lb
36FN3000A01SP	EXFN, PLASTIC, 7.00 OD, .912 ID	1.000 ea

MG1050G01	CELEROL MEDIUM CHARCOAL METALLIC GRAY	0.022 ga
WD1000A15	3-520132-2 AMP FLAG (4M/RL NON-CANC/NON-	6.000 ea
HA3101A40	THRUBOLT 1/4-20 X 12.687	4.000 ea
HA4067A01	PUSH IN DRAIN FITTING (BLACK)	1.000 ea
HA4067A01	PUSH IN DRAIN FITTING (BLACK)	1.000 ea
MN416A01	TAG-INSTAL-MAINT no wire (2500 bx)11/25	1.000 ea
36FH4009A124	IEC FH W/GRSR,GRILL,NO DIMPLES,PRIMER	1.000 ea
SP5172A05	37 TYPE LC TORQ STAT SW LEAD ASSEMBLY	1.000 ea
LC0017	CONN LABEL-1 PHASE-SINGLE VOLT-REV ROTNO	1.000 ea
LB1624	COMBINED WARNING LABEL, ISO/ANSI PICTOGR	1.000 ea
NP1372L	ALUM UL CE UKCA WEEE CC, A60	1.000 ea
36PA1001	PKG GRP, PRINT PK1017A07	1.000 ea
FE-0000001	ZRTG FE ASSEMBLY	1.000 ea

Accessories

Part number	Description	Multiplier
36-3301	C FACE KIT	A8
36EP1304A62SP	FLANGE MTD ENDPLATE 182-4TD -ENCL (LESS	A8

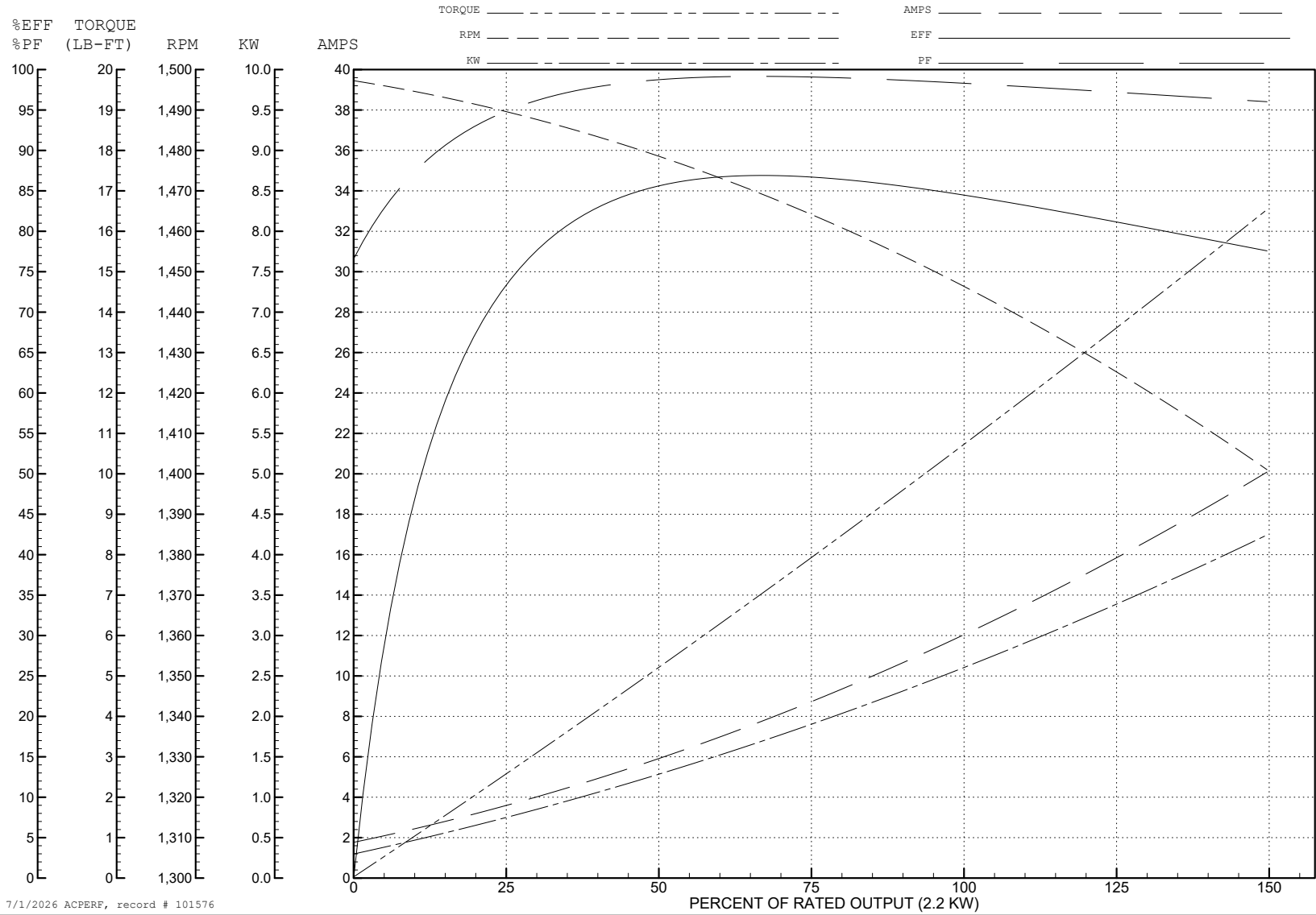
ABB Motors and Mechanical Inc.

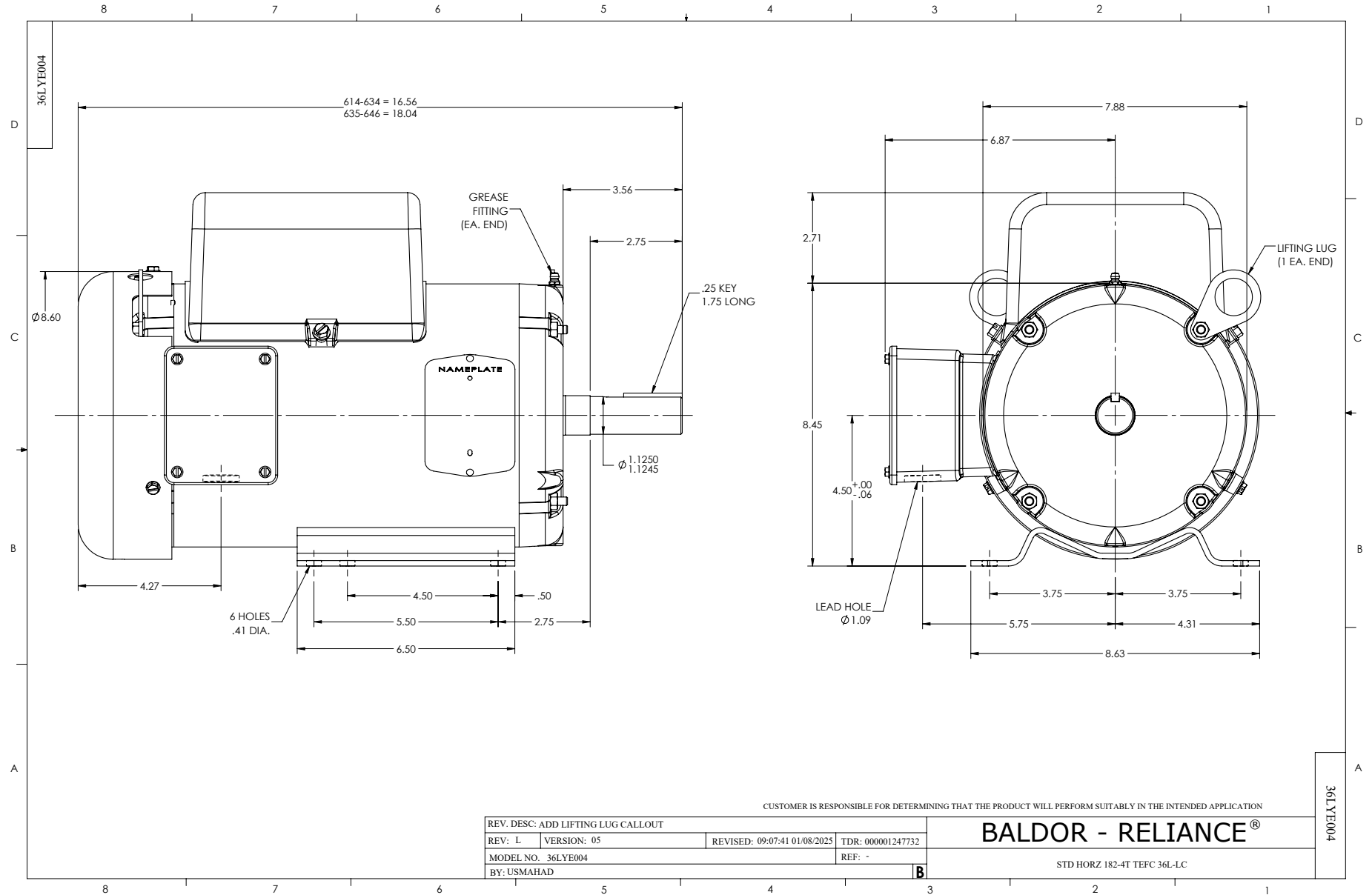
WINDING # 36WGQ058

Typical performance - not guaranteed values.

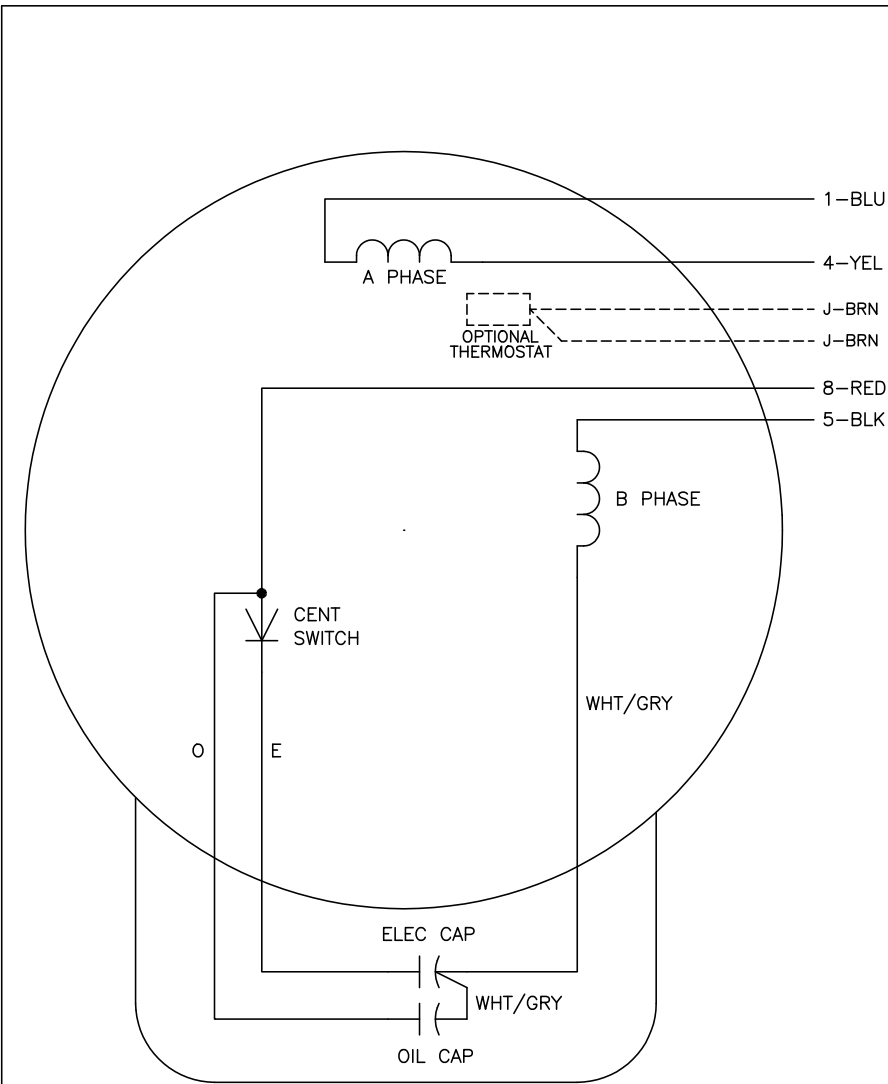
2.2 KW 1 PH 50 HZ 1440 RPM 220 V 3646LC

TORQUES (LB-FT): PO=25.1 PU=17.2 LR=31.3 LRA=78.6





CD0017A02



	LINE A	LINE B
STD	1,8	4,5
OPP	1,5	4,8

NOTES:

1. STANDARD ROTATION IS CCW FACING END OPPOSITE SHAFT EXTENSION.
2. OPTIONAL THERMOSTAT IS PROVIDED WHEN SPECIFIED.
3. MULTIPLE CAPACITORS ARE CONNECTED IN PARALLEL UNLESS OTHERWISE SPECIFIED.
4. LEAD COLORS ARE OPTIONAL. LEADS MUST ALWAYS BE NUMBERED AS SHOWN.

CD0017A02

REV. DESC: REVISE TO SHOW OPTIONAL COLORS			
REV. LTR: B	BY: JLP	REVISED: 04/09/99 11:30	TDR: 0178636
CD0017A02		FILE: AAA00007514	MDL: -
		MTL: -	

BALDOR ELECTRIC Co.

TYPE LC, SV, REV, 4 LEADS