

**BALDOR • RELIANCE**

---

# Customer information packet

## L3711T

10HP, 3450RPM, 1PH, 60HZ, 215T, 3744LC, TEFC, F

Class - None

Division - Not Applicable

## Specifications

Enclosure	TEFC
Frame	215T
Frame Material	Steel
Frequency	60.00 Hz
Motor Letter Type	Cap Start, Cap Run
Output @ Frequency	10.000 HP @ 60 HZ
Phase	1
Synchronous Speed @ Frequency	3600 RPM @ 60 HZ
Voltage @ Frequency	230.0 V @ 60 HZ
XP Class and Group	None
XP Division	Not Applicable
Agency Approvals	UR CSA
Ambient Temperature	40 °C
Auxillary Box	No Auxillary Box
Auxillary Box Lead Termination	None
Base Indicator	Rigid
Bearing Grease Type	Polyrex EM (-20F +300F)
Blower	None
Current @ Voltage	40.000 A @ 230.0 V
Design Code	L
Drip Cover	No Drip Cover
Duty Rating	CONT
Efficiency @ 100% Load	82.0 %
Electrically Isolated Bearing	Not Electrically Isolated
Feedback Device	NO FEEDBACK
Front Face Code	Standard
Front Shaft Indicator	None
Heater Indicator	No Heater
High Voltage Full Load Amps	40.0 a
Insulation Class	F
Inverter Code	Not Inverter

## Part detail

Revision	L
Type	AC
Mech. spec.	37M230
Base	
Status	PRD/A
Elec. spec.	37WGW578
Layout	37LYM230
Eff. date	05-13-2024
CD Diagram	CD0086
Poles	02
Leads	2#10 A PH,2#14 B PH
Proprietary	False
Created date	02-09-2010

<b>KVA Code</b>	H
<b>Lifting Lugs</b>	Standard Lifting Lugs
<b>Locked Bearing Indicator</b>	No Locked Bearing
<b>Motor Lead Exit</b>	Ko Box
<b>Motor Lead Quantity/Wire Size</b>	2 @ 10 AWG, A PH
<b>Motor Lead Termination</b>	Flying Leads
<b>Motor Standards</b>	NEMA
<b>Motor Type</b>	3744LC
<b>Mounting Arrangement</b>	F1
<b>Number of Poles</b>	2
<b>Overall Length</b>	19.02 IN
<b>Power Factor</b>	98
<b>Product Family</b>	General Purpose
<b>Pulley End Bearing Type</b>	Ball
<b>Pulley Face Code</b>	Standard
<b>Pulley Shaft Indicator</b>	Standard
<b>Rodent Screen</b>	None
<b>Service Factor</b>	1.00
<b>Shaft Diameter</b>	1.375 IN
<b>Shaft Extension Location</b>	Pulley End
<b>Shaft Ground Indicator</b>	No Shaft Grounding
<b>Shaft Rotation</b>	Reversible
<b>Shaft Slinger Indicator</b>	No Slinger
<b>Speed</b>	3450 rpm
<b>Speed Code</b>	Single Speed
<b>Starting Method</b>	Direct on line
<b>Thermal Device - Bearing</b>	None
<b>Thermal Device - Winding</b>	None
<b>Vibration Sensor Indicator</b>	No Vibration Sensor
<b>Winding Thermal 1</b>	None
<b>Winding Thermal 2</b>	None

**Nameplate**

<b>NP1256L</b>									
<b>CAT.NO.</b>	L3711T								
<b>SPEC.</b>	37M230W578								
<b>HP</b>	10								
<b>VOLTS</b>	230								
<b>AMP</b>	40								
<b>RPM</b>	3450								
<b>FRAME</b>	215T		<b>HZ</b>	60		<b>PH</b>	1		
<b>SER.F.</b>	1.00	<b>CODE</b>	H	<b>DES</b>	L	<b>CLASS</b>	F		
<b>NEMA-NOM-EFF</b>	82	<b>PF</b>	98						
<b>RATING</b>	40C AMB-CONT								
<b>CC</b>									
<b>DE</b>	6307		<b>ODE</b>	6206					
<b>ENCL</b>	TEFC	<b>SN</b>							

## Parts list

Part number	Description	Quantity
SA190808	SA 37M230W578	1.000 ea
RA178473	RA 37M230W578	1.000 ea
OC3030F11SP	CAPACITOR 30 MFD 370 VAC	2.000 ea
EC1216C06SP	ELEC CAP, 216-259 MFD, 250V, 2.06D X 4.	3.000 ea
HW3200A01	3/8-16X3/4 EYEBOLT WELDED F/S	1.000 ea
11XW1032G06	10-32 X .38, TAPTITE II, HEX WSHR SLTD U	1.000 ea
HW3001B01	BRASS CUP WASHER, FOR #10 SCREW	1.000 ea
37EP3101C04	FREP,TEFC, 37 L&M, W/GREASER SP5067	1.000 ea
HW4500A01	1641B(ALEMITE)400 UNIV, GREASE FITT	1.000 ea
13XF0832A08	8-32 X.50 PAN HD,SLTD, TYPE F SCREW, ZIN	2.000 ea
37CB5001A21	ENCL, A01 BOX W/LID, GASKETS & 1.09 LEAD	1.000 ea
HW5100A06	W2420-025 WVY WSHR (WB)	1.000 ea
37EP3100A01	PUEP ASSEMBLY - ROUTING PUPROSES	1.000 ea
HW4500A01	1641B(ALEMITE)400 UNIV, GREASE FITT	1.000 ea
XY3118A12	5/16-18 HEX NUT DIRECTIONAL SERRATION	4.000 ea
51XB1214A20	12-14X1.25 HXWSSLD SERTYB	1.000 ea
07FH4007A06	IEC FH W/GRS, NOT @6, 3 F/C HOL & NOT FO	1.000 ea
51XW1032A06	10-32 X .38, TAPTITE II, HEX WSHR SLTD S	3.000 ea
HW2501F21	KEY, 5/16 SQ X 2.375	1.000 ea
HA7000A02	KEY RETAINER RING, 1 1/8 DIA, 1 3/8 DIA	1.000 ea
85XU0407S04	4X1/4 U DRIVE PIN STAINLESS	2.000 ea
MJ1000A02	GREASE, POLYREX EM EXXON	0.050 lb
37FN3002A01SP	EXFN, PLASTIC, 9.00 OD, 1.155 ID	1.000 ea
MG1050G01	CELEROL MEDIUM CHARCOAL METALLIC GRAY	0.028 ga
SP5172A03	37 TYPE L TORQ STAT SWITCH LEAD ASSEMBLY	1.000 ea
WD1000A15	3-520132-2 AMP FLAG (4M/RL NON-CANC/NON-	10.000 ea
WD1000A03	41531 AMP FLG.TERM,4M/REEL(2.5MIL)	8.000 ea
NS2605	INSULATOR FOR 37 FRAMESWITCH (MH1011A10)	1.000 ea
HA3104A17	5/16-18X13.250 T-BLT/OHIO	4.000 ea
LC0086	CONNECTION LABEL	1.000 ea
NP1256L	ALUM UL CC INDUSTRIAL MOTOR A60	1.000 ea

37PA1074	PALLET PACK GRP, PRINT BOX PK1026A06	1.000 ea
MN416A01	TAG-INSTAL-MAINT no wire (2100bx)4/22	1.000 ea
LB1624	COMBINED WARNING LABEL, ISO/ANSI PICTOGR	1.000 ea

---

**Accessories**

<b>Part number</b>	<b>Description</b>	<b>Multiplier</b>
37-3301	C FACE KIT	P1

**AC Induction Motor Performance Data**

Record # 11882

Typical performance - not guaranteed values

Winding: 37WGW578-R001		Type: 3744LC		Enclosure: TEFC	
<b>Nameplate Data</b>			<b>230 V, 60 Hz: Single Voltage Motor</b>		
Rated Output (HP)		10	Full Load Torque		15 LB-FT
Volts		230	Start Configuration		direct on line
Full Load Amps		40	Breakdown Torque		44 LB-FT
R.P.M.		3450	Pull-up Torque		33 LB-FT
Hz	60 Phase	1	Locked-rotor Torque		42 LB-FT
NEMA Design Code	L KVA Code	H	Starting Current		284 A
Service Factor (S.F.)		1	No-load Current		4.3 A
NEMA Nom. Eff.	82 Power Factor	98	Line-line Res. @ 25°C		0.174 Ω A Ph 0.681 Ω B Ph
Rating - Duty		40C AMB-CONT	Temp. Rise @ Rated Load		102°C

**Load Characteristics 230 V, 60 Hz, 10 HP**

% of Rated Load	25	50	75	100	125	150
Power Factor	99	99	99	99	98	97
Efficiency	66.6	78.9	82.9	83.9	83.4	81.8
Speed	3573	3551	3527	3500	3469	3431
Line amperes	12.2	20.6	29.5	39	49.4	61.1



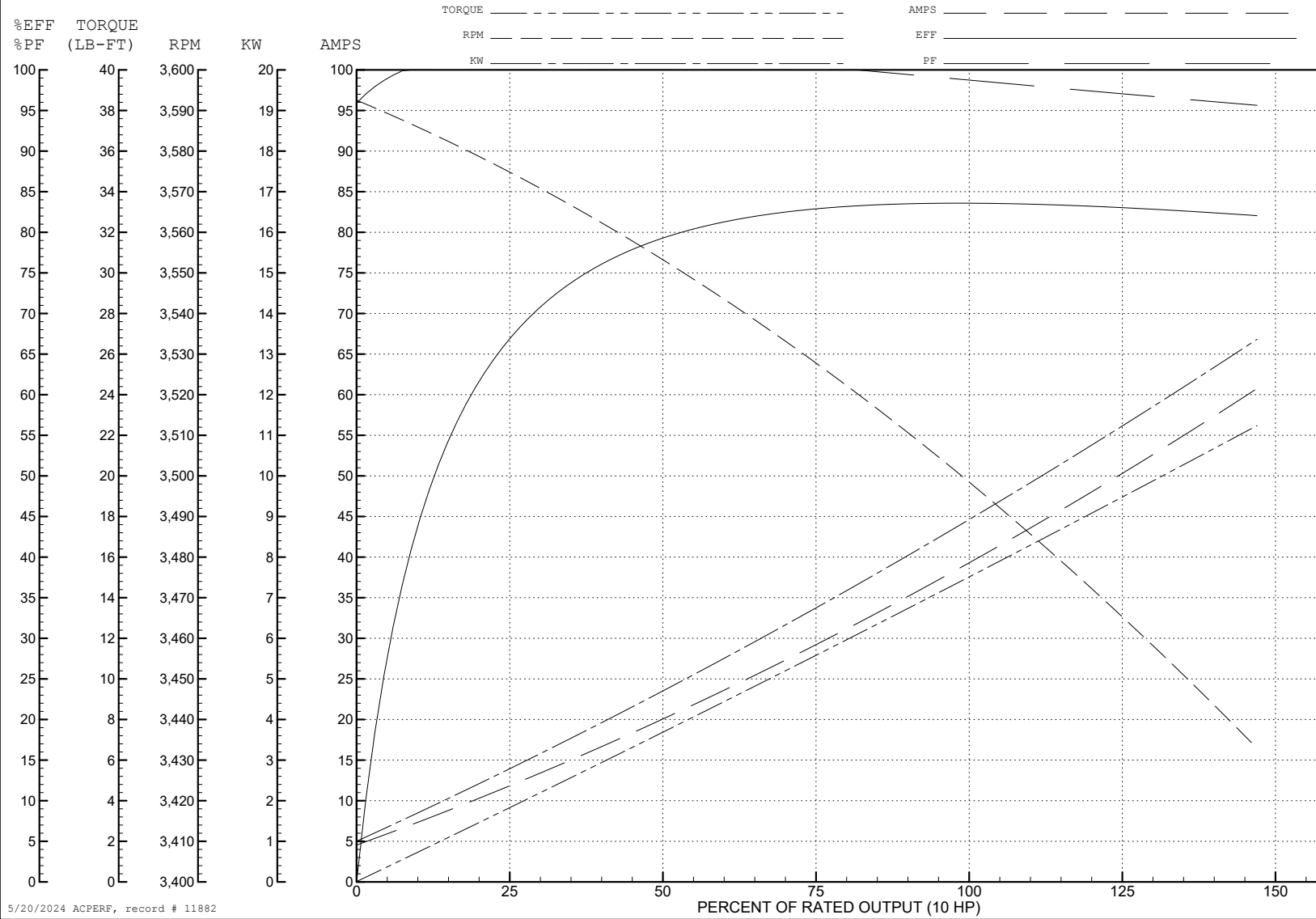
ABB Motors and Mechanical Inc.

WINDING # 37WGW578

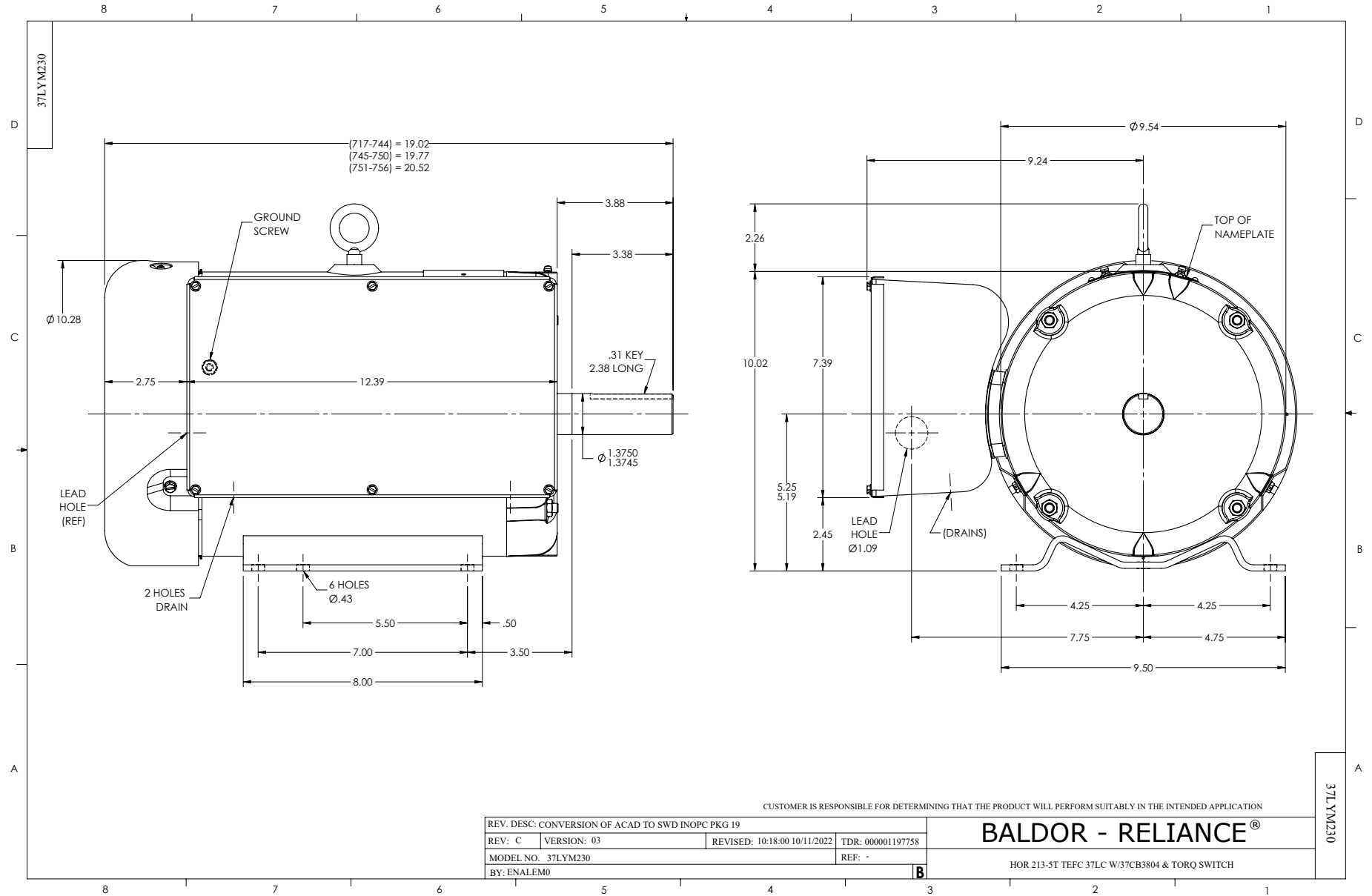
Typical performance - not guaranteed values.

10 HP 1 PH 60 HZ 3450 RPM 230 V 3744LC

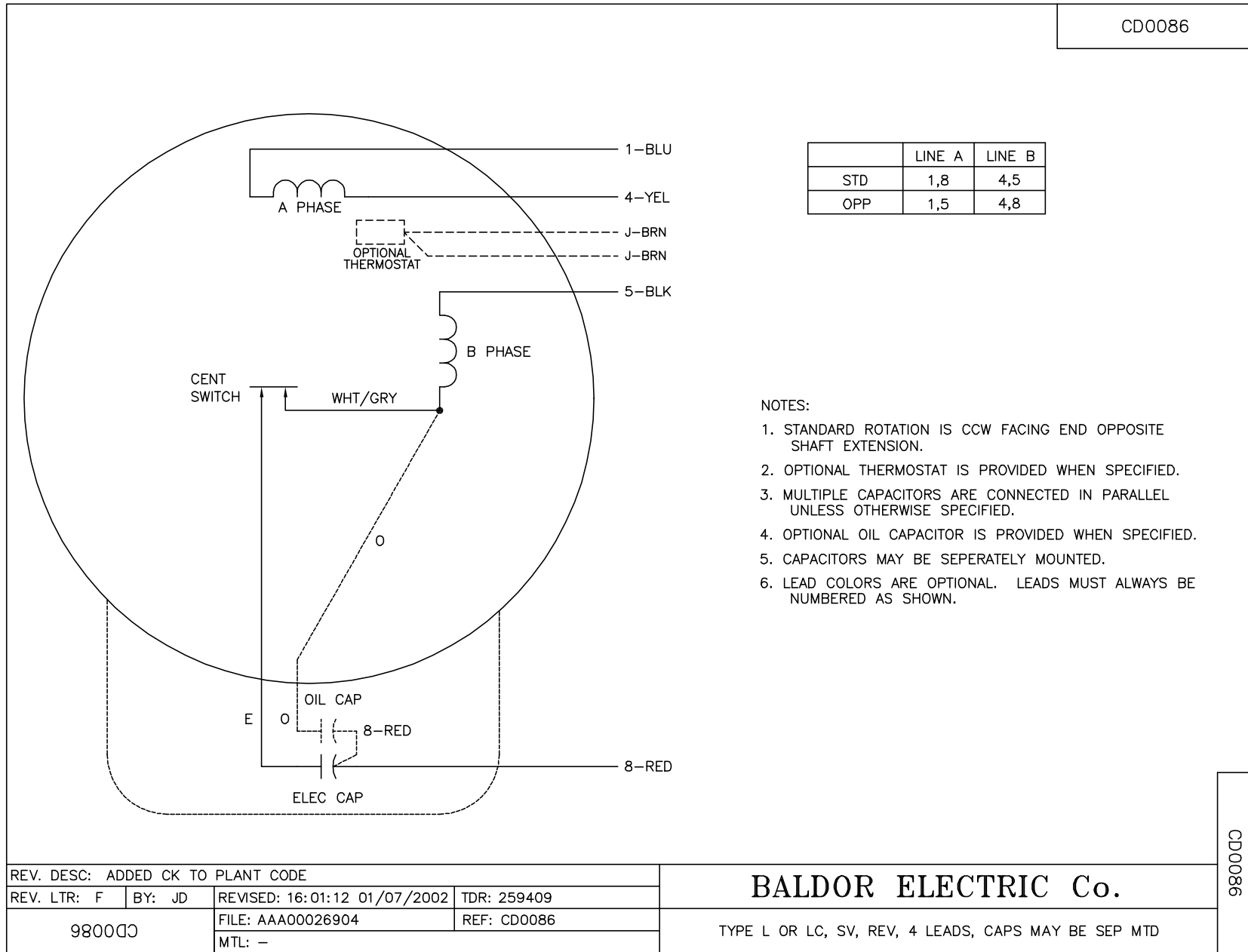
TORQUES (LB-FT) : PO=44 PU=33 LR=42 LRA=284



5/20/2024 ACPERF, record # 11882



CD0086



REV. DESC: ADDED CK TO PLANT CODE			
REV. LTR: F	BY: JD	REVISED: 16:01:12 01/07/2002	TDR: 259409
980000		FILE: AAA00026904	REF: CD0086
		MTL: -	

**BALDOR ELECTRIC Co.**

TYPE L OR LC, SV, REV, 4 LEADS, CAPS MAY BE SEP MTD

CD0086