

BALDOR® • RELIANCE 

Product Information Packet

L5023T

1HP,1725RPM,1PH,60HZ,143T,3528L,XPFC,F1

Part Detail							
Revision:	M	Status:	PRD/A	Change #:		Proprietary:	No
Type:	AC	Elec. Spec:	35WGN637	CD Diagram:	CD0001	Mfg Plant:	
Mech. Spec:	35J659	Layout:	35LYJ659	Poles:	04	Created Date:	12-05-2012
Base:	RG	Eff. Date:	02-10-2022	Leads:	6#18		

Specs			
Catalog Number:	L5023T	Insulation Class:	B
Enclosure:	XPFC	Inverter Code:	Not Inverter
Frame:	143T	KVA Code:	K
Frame Material:	Steel	Lifting Lugs:	No Lifting Lugs
Motor Letter Type:	Cap Start, Induction Run	Locked Bearing Indicator:	No Locked Bearing
Output @ Frequency:	1.000 HP @ 60 HZ	Motor Lead Quantity/Wire Size:	6 @ 18 AWG
Synchronous Speed @ Frequency:	1800 RPM @ 60 HZ	Motor Lead Exit:	Ko Box
Voltage @ Frequency:	115.0 V @ 60 HZ	Motor Lead Termination:	Flying Leads
	208.0 V @ 60 HZ	Motor Type:	X3528L
	230.0 V @ 60 HZ	Mounting Arrangement:	F1
XP Class and Group:	CLI GP D	Power Factor:	77
XP Division:	Division I	Product Family:	General Purpose
Agency Approvals:	UL	Pulley End Bearing Type:	Ball
	CSA	Pulley Face Code:	Standard
Auxillary Box:	No Auxillary Box	Pulley Shaft Indicator:	Standard
Auxillary Box Lead Termination:	None	Rodent Screen:	None
Base Indicator:	Rigid	RoHS Status:	ROHS NON-COMPLIANT
Bearing Grease Type:	Polyrex EM (-20F +300F)	Shaft Extension Location:	Pulley End

Blower:	None	Shaft Ground Indicator:	No Shaft Grounding
Current @ Voltage:	11.800 A @ 115.0 V	Shaft Rotation:	Reversible
	5.900 A @ 230.0 V	Shaft Slinger Indicator:	No Slinger
	6.300 A @ 208.0 V	Speed Code:	Single Speed
Design Code:	L	Motor Standards:	NEMA
Drip Cover:	No Drip Cover	Starting Method:	Direct on line
Duty Rating:	CONT	Thermal Device - Bearing:	None
Electrically Isolated Bearing:	Not Electrically Isolated	Thermal Device - Winding:	Normally Closed Thermostat
Feedback Device:	NO FEEDBACK	Vibration Sensor Indicator:	No Vibration Sensor
Front Face Code:	Standard	Winding Thermal 1:	None
Front Shaft Indicator:	None	Winding Thermal 2:	None
Heater Indicator:	No Heater	XP Temp Code:	T2C

Nameplate NP0015XPSL										
NO.		CC								
SER. #										
SPEC	35J659N637G1									
CAT.NO.	L5023T									
H.P.	1	T. CODE	T2C							
VOLTS	115/208-230									
AMPS	11.8/6.3-5.9									
R.P.M.	1725									
HZ	60	PH	1	CLASS	B					
SER.F.	1.00	DES	L	CODE	K					
RATING	40C AMB-CONT									
FRAME	143T	NEMA NOM. EFF	72							
USABLE AT 208V		PF	77							
BLANK										

Parts List		
Part Number	Description	Quantity
SA255206	SA 35J659N637G1	1.000 EA
RA242011	RA 35J659N637G1	1.000 EA
EC1324A02	ELEC CAP, 324-389 MFD, 125V, 1.48D X 3.	2.000 EA
35CB3001A02SP	EXPL PROOF CONDUIT BOX, 3/4"PIPE TAP LEA	1.000 EA
11XW1032G06	10-32 X .38, TAPTITE II, HEX WSHR SLTD U	1.000 EA
HW3001B01	BRASS CUP WASHER, FOR #10 SCREW	1.000 EA
35EP3700A01SP	FR ENDPLATE, XPFC	1.000 EA
51XW0832A07	8-32 X .44, TAPTITE II, HEX WSHR SLTD SE	2.000 EA
HW5100A03	WAVY WASHER (W1543-017)	1.000 EA
35EP3701A01	PU ENDPLATE, XPFC - 205 BRG	1.000 EA
XY3118A12	5/16-18 HEX NUT DIRECTIONAL SERRATION	4.000 EA
51XB1214A16	12-14X1.00 HXWSSLD SERTYB	1.000 EA
35FH4005A01SP	IEC FH NO GREASER W/PRIMED	1.000 EA
51XW1032A06	10-32 X .38, TAPTITE II, HEX WSHR SLTD S	3.000 EA
35CB3500A01SP	CONDUIT BOX LID, MACH	1.000 EA
51XN2520A16	SCREW, HEX WS SLT, ZN, 1/4-20 X 1.00	4.000 EA
HW2501D13	KEY, 3/16 SQ X 1.375	1.000 EA
HA7000A01	KEY RETAINER 7/8" DIA SHAFT	1.000 EA
85XU0407S04	4X1/4 U DRIVE PIN STAINLESS	6.000 EA
NP0018F	ALUM UL XP CONDUIT BOX NAMEPLATE	1.000 EA
HA1025A21	WSHR,FELT .125" THK	1.000 EA
51XW0832A07	8-32 X .44, TAPTITE II, HEX WSHR SLTD SE	2.000 EA
HA6003A52	CLAMP, CAPACITOR, WHITE ZINC PLATED	2.000 EA
MJ1000A02	GREASE, POLYREX EM EXXON	0.050 LB

Parts List (continued)		
Part Number	Description	Quantity
MG1025G29	WILKOFAST, 789.229, DARK CHARCOAL GRAY	0.017 GA
35FN3002A05SP	EXFN, PLASTIC, 6.376 OD, .638 ID	1.000 EA
HA3104A08	THRUBOLT 5/16-18 X 9.375 X	4.000 EA
SP5051A64	MODEL 35 TORQ STATIONARY SWITCH FOR XP	1.000 EA
LB1119N	WARNING LABEL	1.000 EA
LC0081	CONNECTION LABEL X	1.000 EA
NP0015XPSL	SS XP UL CSA CC CL-I GP-D	1.000 EA
36PA1000	PKG GRP, PRINT PK1016A06	1.000 EA
MN416A01	TAG-INSTAL-MAINT no wire (2200bx) 4/22	1.000 EA

AC Induction Motor Performance Data

Record # 40779

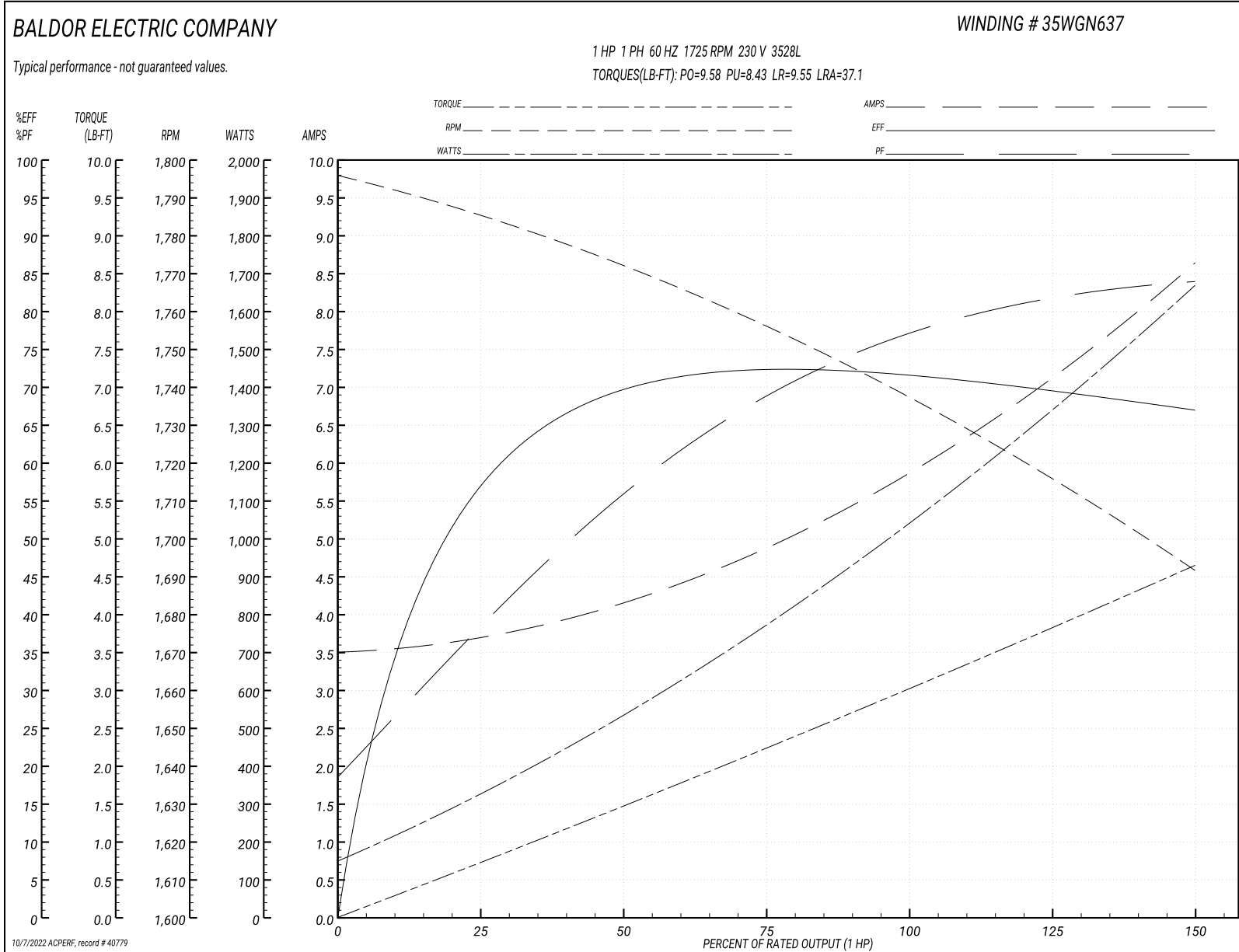
Typical performance - not guaranteed values

Winding: 35WGN637-R001		Type: 3528L		Enclosure: TEFC	
Nameplate Data			230 V, 60 Hz: High Voltage Connection		
Rated Output (HP)	1	Full Load Torque	3.02 LB-FT		
Volts	115/208-230	Start Configuration	direct on line		
Full Load Amps	11.8/6.3-5.9	Breakdown Torque	9.58 LB-FT		
R.P.M.	1725	Pull-up Torque	8.43 LB-FT		
Hz	60 Phase	1	Locked-rotor Torque	9.55 LB-FT	
NEMA Design Code	L KVA Code	K	Starting Current	37.1 A	
Service Factor (S.F.)		1	No-load Current	3.5 A	
NEMA Nom. Eff.	72 Power Factor	77	Line-line Res. @ 25°C	2.4797 Ω A Ph 1.1184 Ω B Ph	
Rating - Duty	40C AMB-CONT		Temp. Rise @ Rated Load	63°C	

Load Characteristics 230 V, 60 Hz, 1 HP

% of Rated Load	25	50	75	100	125	150
Power Factor	39	56	69	77	81	85
Efficiency	56.3	68.2	71.6	72.2	70.7	66.4
Speed	1783.5	1770.9	1755.8	1739.2	1718.6	1689.5
Line amperes	3.68	4.16	4.92	5.86	7.03	8.69

Performance Graph at 230V, 60Hz, 1.0HP Typical performance - Not guaranteed values



AC Induction Motor Performance Data

Record # 40780

Typical performance - not guaranteed values

Winding: 35WGN637-R001		Type: 3528L		Enclosure: TEFC	
Nameplate Data			208 V, 60 Hz: High Voltage Connection		
Rated Output (HP)	1	Full Load Torque	3.03 LB-FT		
Volts	115/208-230	Start Configuration	direct on line		
Full Load Amps	11.8/6.3-5.9	Breakdown Torque	7.87 LB-FT		
R.P.M.	1725	Pull-up Torque	6.56 LB-FT		
Hz	60 Phase	1	Locked-rotor Torque	8.06 LB-FT	
NEMA Design Code	L KVA Code	K	Starting Current	32.3 A	
Service Factor (S.F.)		1	No-load Current	3.01 A	
NEMA Nom. Eff.	72 Power Factor	77	Line-line Res. @ 25°C	2.4797 Ω A Ph 1.1184 Ω B Ph	
Rating - Duty	40C AMB-CONT		Temp. Rise @ Rated Load	73°C	

Load Characteristics 208 V, 60 Hz, 1 HP

% of Rated Load	25	50	75	100	125	150
Power Factor	45	64	75	82	85	86
Efficiency	58.2	69.5	71.6	69.4	63.9	48.7
Speed	1779.2	1762.5	1741.7	1714.9	1674.4	1576
Line amperes	3.3	3.94	4.94	6.28	8.24	12.4

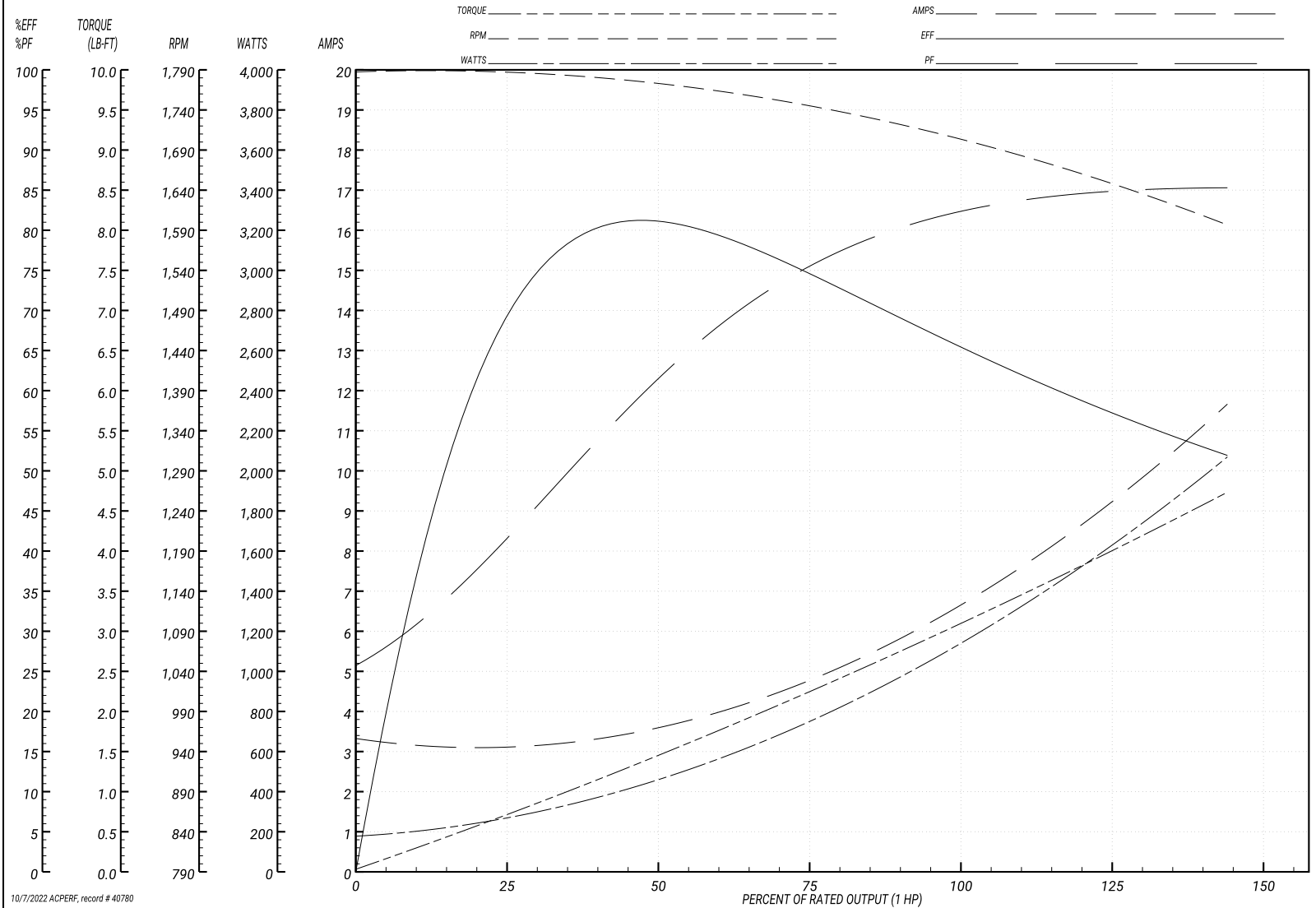
Performance Graph at 208V, 60Hz, 1.0HP Typical performance - Not guaranteed values

BALDOR ELECTRIC COMPANY

WINDING # 35WGN637

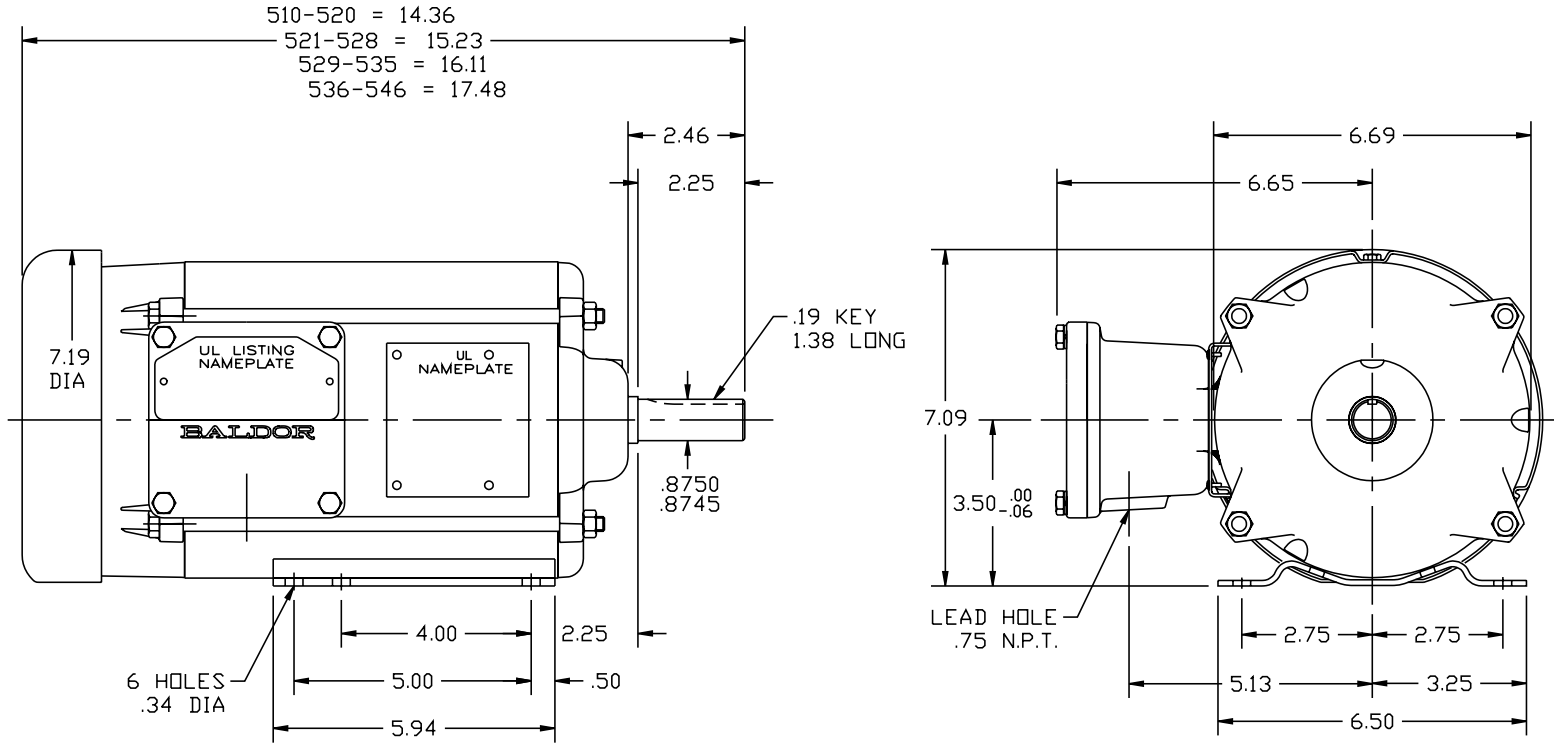
Typical performance - not guaranteed values.

1 HP 1 PH 60 HZ 1725 RPM 208 V 3528L
 TORQUES(LB-FT): PO=7.87 PU=6.56 LR=8.06 LRA=32.3



10/7/2022 ACPERF, record # 40780

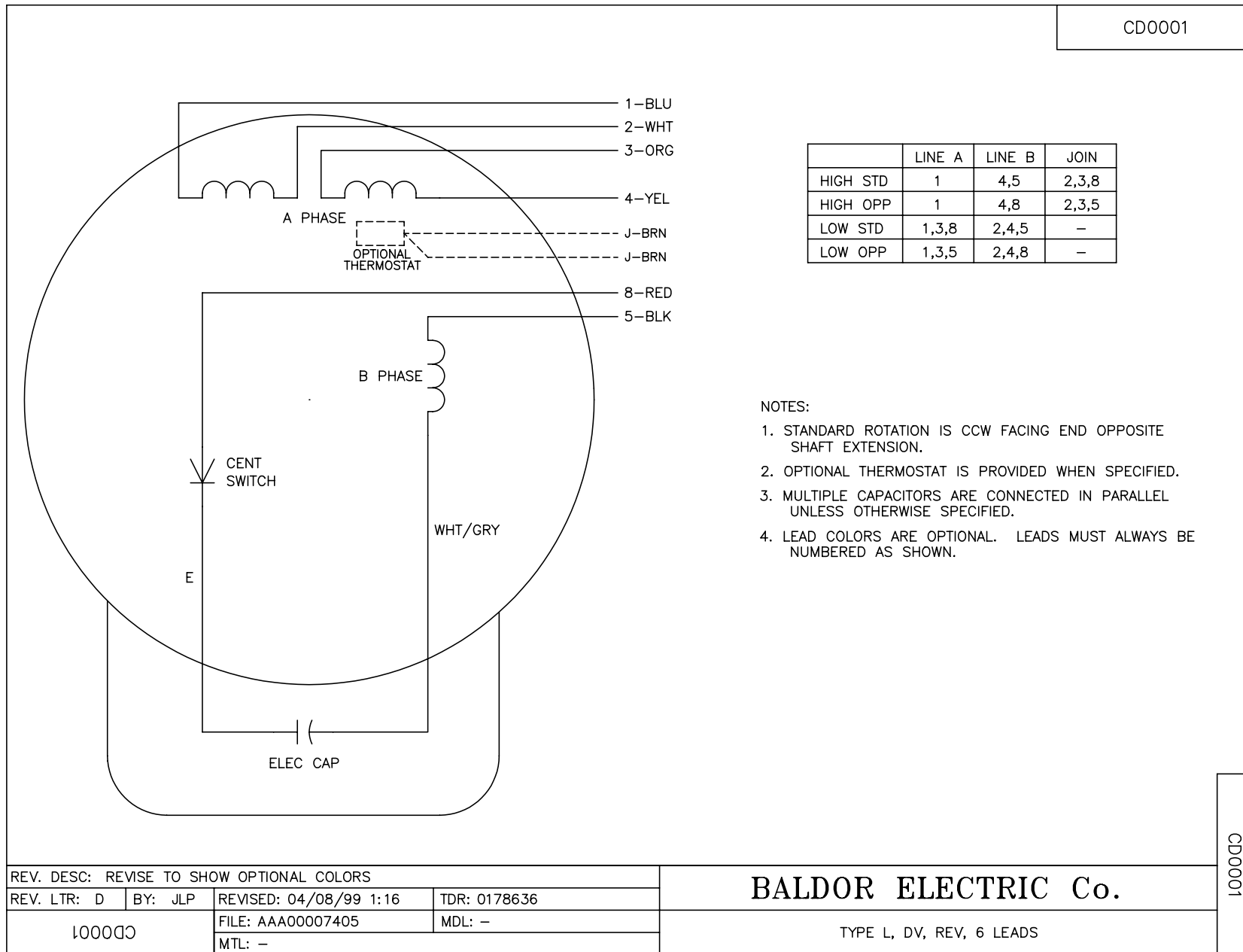
35J659



CUST. NAME		CUST. P.O.		CERTIFIED BY		MODEL		INSUL		AMB	
H.P.		MTG		TYPE		R.P.M.		VOLTS		ENCL	
PHASE		FREQ		FRAME		REMARKS:					
REV:	B	LOADED TO ACAD									
69999		SCALE: .3	BY: JKH	REVISED: 10/05/94	<h2>BALDOR ELECTRIC Co.</h2> <p>STD HDRZ X35L NEMA 143-5T TEFC UL CLASS I-GP D T'STATS</p>						
		FILE: AAA00014073	TDR: 0051035								

35J659

CD0001



REV. DESC: REVISE TO SHOW OPTIONAL COLORS			
REV. LTR: D	BY: JLP	REVISED: 04/08/99 1:16	TDR: 0178636
100000		FILE: AAA00007405	MDL: -
		MTL: -	

BALDOR ELECTRIC Co.

TYPE L, DV, REV, 6 LEADS

CD0001