



---

# Customer information packet

## M1009T

7.5/1.9HP, 1730/860RPM, 3PH, 60HZ, 213T, 3734

Class - None

Division - Not Applicable

## Specifications

Enclosure	OPEN
Frame	213T
Frame Material	Steel
Frequency	60.00 Hz
Motor Letter Type	Three Phase
Output @ Frequency	7.500 HP @ 60 HZ 1.900 HP @ 60 HZ
Phase	3
Synchronous Speed @ Frequency	900 RPM @ 60 HZ
Voltage @ Frequency	230.0 V @ 60 HZ
XP Class and Group	None
XP Division	Not Applicable
Agency Approvals	UR CSA
Ambient Temperature	40 °C
Auxillary Box	No Auxillary Box
Auxillary Box Lead Termination	None
Base Indicator	Rigid
Bearing Grease Type	Polyrex EM (-20F +300F)
Blower	None
Current @ Voltage	18.600 A @ 230.0 V
Design Code	B
Drip Cover	No Drip Cover
Duty Rating	CONT
Electrically Isolated Bearing	Not Electrically Isolated
Feedback Device	NO FEEDBACK
Front Shaft Indicator	None
Heater Indicator	No Heater
High Voltage Full Load Amps	7.3 a
Insulation Class	B
Inverter Code	Not Inverter
KVA Code	J

## Part detail

Revision	-
Type	AC
Mech. spec.	37B001
Base	
Status	PRD/A
Elec. spec.	37WGZ660
Layout	37LYB001
Eff. date	12-18-2020
CD Diagram	CD0032
Poles	04/08
Leads	6#12
Proprietary	False
Created date	12-14-2020

<b>Lifting Lugs</b>	Standard Lifting Lugs
<b>Locked Bearing Indicator</b>	No Locked Bearing
<b>Motor Lead Quantity/Wire Size</b>	6 @ 12 AWG
<b>Motor Lead Termination</b>	Flying Leads
<b>Motor Standards</b>	NEMA
<b>Motor Type</b>	3734M
<b>Mounting Arrangement</b>	F1
<b>Number of Poles</b>	4 8
<b>Overall Length</b>	16.32 IN
<b>Product Family</b>	General Purpose
<b>Pulley End Bearing Type</b>	Ball
<b>Pulley Face Code</b>	Standard
<b>Pulley Shaft Indicator</b>	Standard
<b>Rodent Screen</b>	None
<b>Service Factor</b>	1.15
<b>Shaft Diameter</b>	1.375 IN
<b>Shaft Ground Indicator</b>	No Shaft Grounding
<b>Shaft Rotation</b>	Reversible
<b>Shaft Slinger Indicator</b>	No Slinger
<b>Speed</b>	1730 rpm 860 rpm
<b>Speed Code</b>	2S-1W-VT
<b>Starting Method</b>	Direct on line
<b>Thermal Device - Bearing</b>	None
<b>Thermal Device - Winding</b>	None
<b>Vibration Sensor Indicator</b>	No Vibration Sensor
<b>Winding Thermal 1</b>	None
<b>Winding Thermal 2</b>	None

**Nameplate**

<b>NP1256L</b>										
<b>CAT.NO.</b>	M1009T									
<b>SPEC.</b>	37B001Z660									
<b>HP</b>	7.5/1.9									
<b>VOLTS</b>	230									
<b>AMP</b>	18.6/7.3									
<b>RPM</b>	1730/860									
<b>FRAME</b>	213T	<b>HZ</b>	60	<b>PH</b>	3					
<b>SER.F.</b>	1.15	<b>CODE</b>	J	<b>DES</b>	B	<b>CLASS</b>	B			
<b>NEMA-NOM-EFF</b>		<b>PF</b>								
<b>RATING</b>	40C AMB-CONT									
<b>CC</b>		<b>USABLE AT 208V</b>								
<b>DE</b>	6307	<b>ODE</b>	6206							
<b>ENCL</b>	OPEN	<b>SN</b>								

## Parts list

Part number	Description	Quantity
SA388845	SA 37B001Z660	1.000 ea
RA379209	RA 37B001Z660	1.000 ea
HW3200A01	3/8-16X3/4 I-BLT WELDED F/S	1.000 ea
37CB3006	37 CB CASTING W/1.38 LEAD HOLE @ 6:00	1.000 ea
51XW2520A12	.25-20 X .75, TAPTITE II, HEX WSHR SLTD	2.000 ea
11XW1032G06	10-32 X .38, TAPTITE II, HEX WSHR SLTD U	1.000 ea
37EP3203A00	MASTER,ODE,206 BRG,GREASER	1.000 ea
HW4500A01	1641B(ALEMITE)400 UNIV, GREASE FITT	1.000 ea
HW5100A06	W2420-025 WVY WSHR (WB)	1.000 ea
37EP3204D00	MASTER,DE,307 BRG,GREASER	1.000 ea
HW4500A01	1641B(ALEMITE)400 UNIV, GREASE FITT	1.000 ea
XY3118A12	5/16-18 HEX NUT DIRECTIONAL SERRATION	4.000 ea
37CB4516	LIPPED LID FOR 37 FRAME NEC KOBX	1.000 ea
51XW0832A07	8-32 X .44, TAPTITE II, HEX WSHR SLTD SE	4.000 ea
HW2501F21	KEY, 5/16 SQ X 2.375	1.000 ea
HA7000A02	KEY RETAINER RING, 1 1/8 DIA, 1 3/8 DIA	1.000 ea
85XU0407S04	4X1/4 U DRIVE PIN STAINLESS	2.000 ea
LB1115N	LABEL,LIFTING DEVICE (ON ROLLS)	1.000 ea
MJ1000A02	GREASE, POLYREX EM EXXON	0.050 lb
MG1000G27	MED CHARCOAL METALLIC GREY 400-0096	0.028 ga
HA3104A14	THRUBOLT- 5/16-18 X12.125(OHIO)	4.000 ea
LB1119N	WARNING LABEL	1.000 ea
LC0032	CONNECTION LABEL	1.000 ea
NP1256L	ALUM UL CSA CC INDUSTRIAL MOTOR A60	1.000 ea
36PA1001	PKG GRP, PRINT PK1017A06	1.000 ea
MN416A01	TAG-INSTAL-MAINT no wire (2100bx)4/22	1.000 ea
FE-0000001	ZRTG FE ASSEMBLY	1.000 ea
PE-0000001	ZRTG PE ASSEMBLY	1.000 ea

**Accessories**

<b>Part number</b>	<b>Description</b>	<b>Multiplier</b>
37-1404	C FACE KIT	A8

**AC Induction Motor Performance Data**

Record # 85841

Typical performance - not guaranteed values

Winding: 37WGZ660-R001		Type: 3734M	Enclosure: OPEN
<b>Nameplate Data</b>		<b>230 V, 60 Hz: High Speed Connection</b>	
Rated Output (HP)	7.5/1.9	Full Load Torque	22.8 LB-FT
Volts	230	Start Configuration	direct on line
Full Load Amps	18.6/7.3	Breakdown Torque	71.84 LB-FT
R.P.M.	1730/860	Pull-up Torque	59.18 LB-FT
Hz	60 Phase 3	Locked-rotor Torque	66.32 LB-FT
NEMA Design Code	B KVA Code J	Starting Current	139 A
Service Factor (S.F.)	1.15	No-load Current	8.03 A
NEMA Nom. Eff.	0 Power Factor 0	Line-line Res. @ 25°C	0.639 Ω
Rating - Duty	40C AMB-CONT	Temp. Rise @ Rated Load	56°C
S.F. Amps		Temp. Rise @ S.F. Load	70°C
		Locked-rotor Power Factor	56.6
		Rotor inertia	0.836 lb-ft <sup>2</sup>

**Load Characteristics 230 V, 60 Hz, 7.5 HP**

% of Rated Load	25	50	75	100	125	150	S.F.
Power Factor	50	73	83	88	89	89	86
Efficiency	80.4	86.1	86.8	86.1	84.7	82.6	84.7
Speed	1783	1768	1751	1732	1712	1689	1712
Line amperes	9.03	11.48	14.77	18.62	23	27.9	22.1

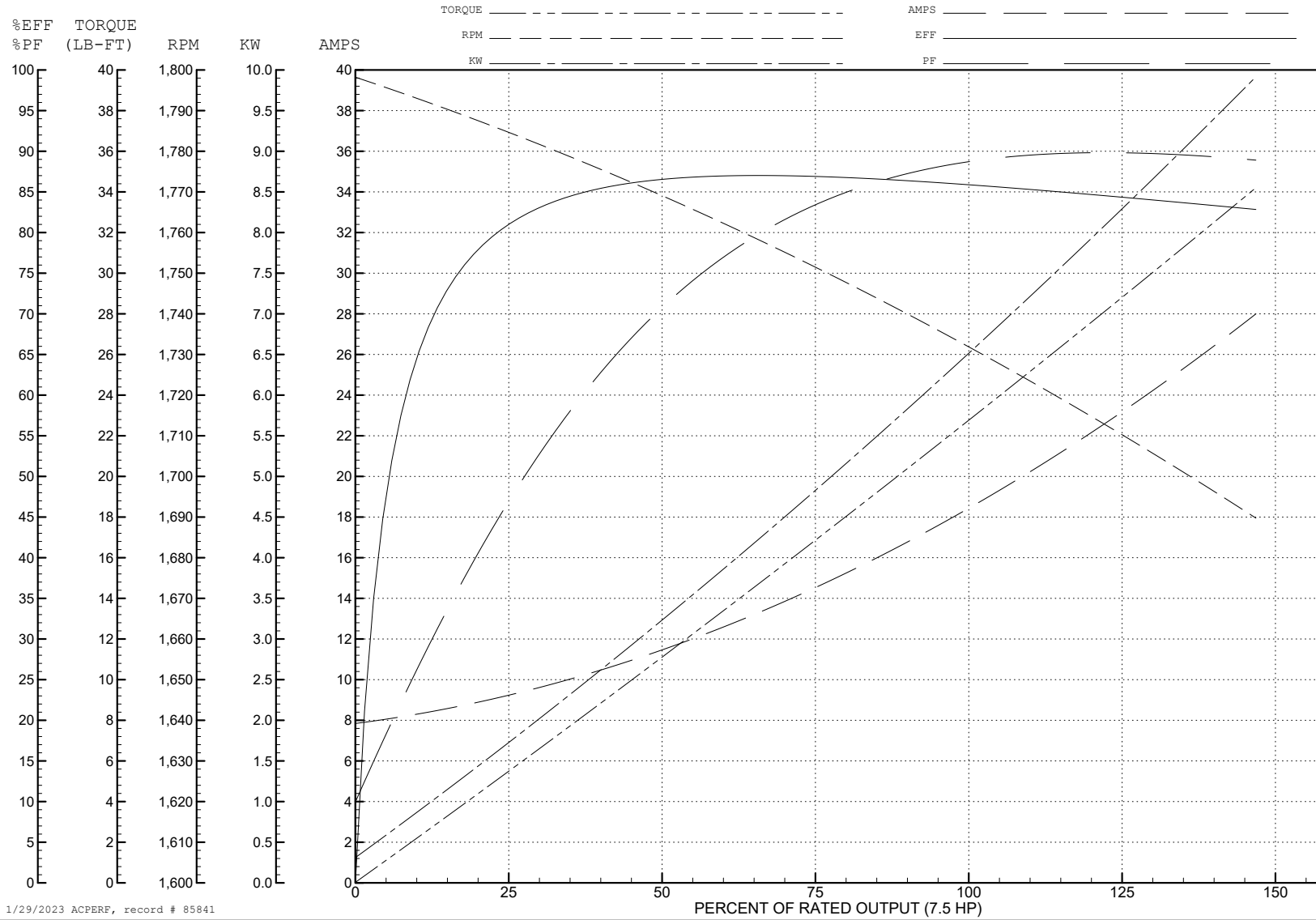
ABB Motors and Mechanical Inc.

WINDING # 37WGZ660

Typical performance - not guaranteed values.

7.5 HP 3 PH 60 HZ 1732 RPM 230 V 3734M

TORQUES (LB-FT): PO=71.84 PU=59.18 LR=66.32 LRA=139



1/29/2023 ACPERF, record # 85841



**AC Induction Motor Performance Data**

Record # 85842

Typical performance - not guaranteed values

Winding: 37WGZ660-R001		Type: 3734M	Enclosure: OPEN
<b>Nameplate Data</b>		<b>230 V, 60 Hz: Low Speed Connection</b>	
Rated Output (HP)	7.5/1.9	Full Load Torque	11.55 LB-FT
Volts	230	Start Configuration	direct on line
Full Load Amps	18.6/7.3	Breakdown Torque	31.64 LB-FT
R.P.M.	1730/860	Pull-up Torque	21.87 LB-FT
Hz	60 Phase	Locked-rotor Torque	24.3 LB-FT
NEMA Design Code	B KVA Code	Starting Current	34.15 A
Service Factor (S.F.)	1.15	No-load Current	5.55 A
NEMA Nom. Eff.	0 Power Factor	Line-line Res. @ 25°C	2.56 Ω
Rating - Duty	40C AMB-CONT	Temp. Rise @ Rated Load	52°C
S.F. Amps		Temp. Rise @ S.F. Load	62°C
		Locked-rotor Power Factor	50.9
		Rotor inertia	0.836 lb-ft <sup>2</sup>

**Load Characteristics 230 V, 60 Hz, 1.9 HP**

% of Rated Load	25	50	75	100	125	150	S.F.
Power Factor	26	41	53	63	69	73	61
Efficiency	62	73.2	76.7	77.4	76.8	75.3	78.5
Speed	891	882	873	864	852	838	848
Line amperes	5.71	6.05	6.59	7.35	8.33	9.52	8.55

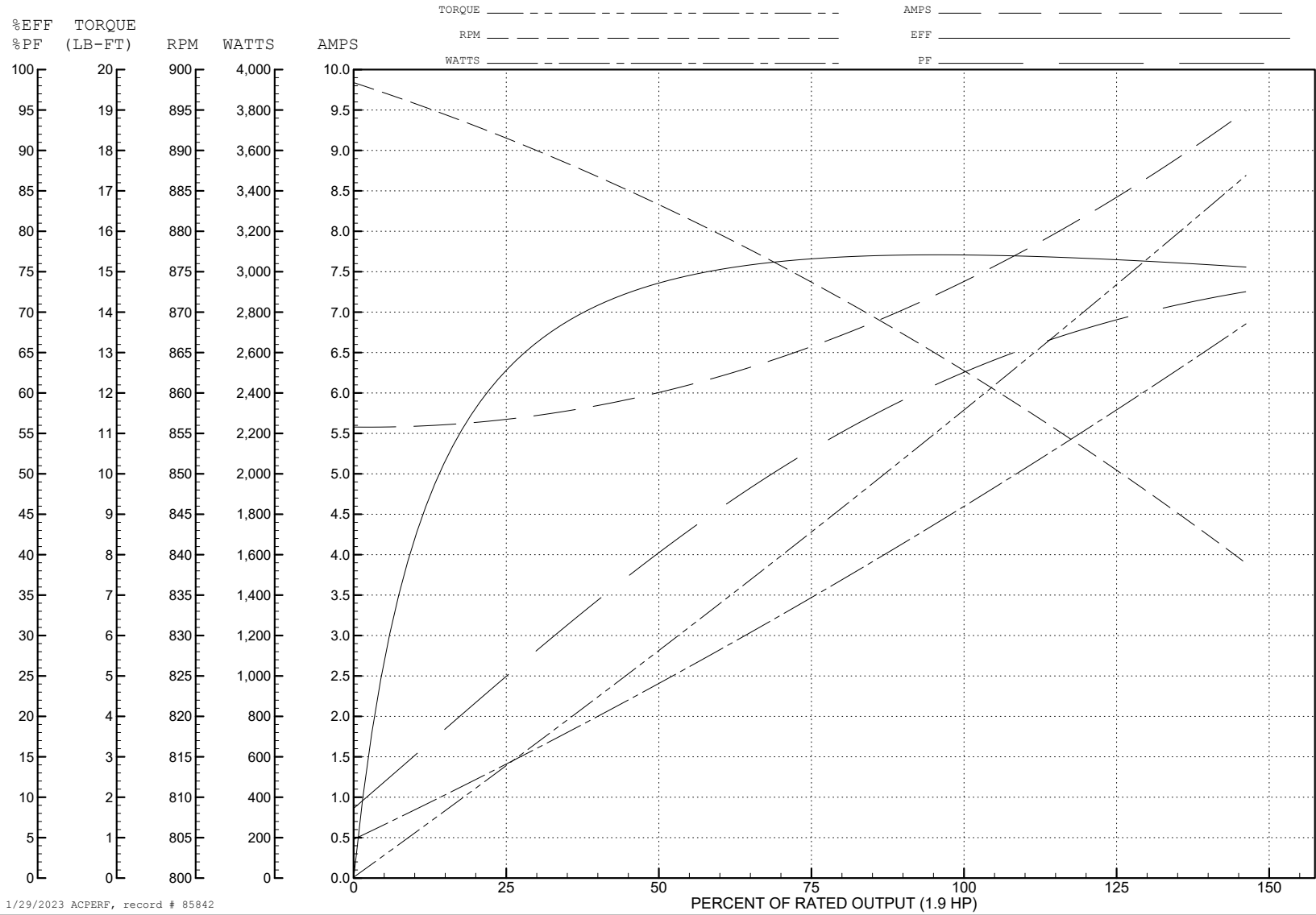
ABB Motors and Mechanical Inc.

WINDING # 37WGZ660

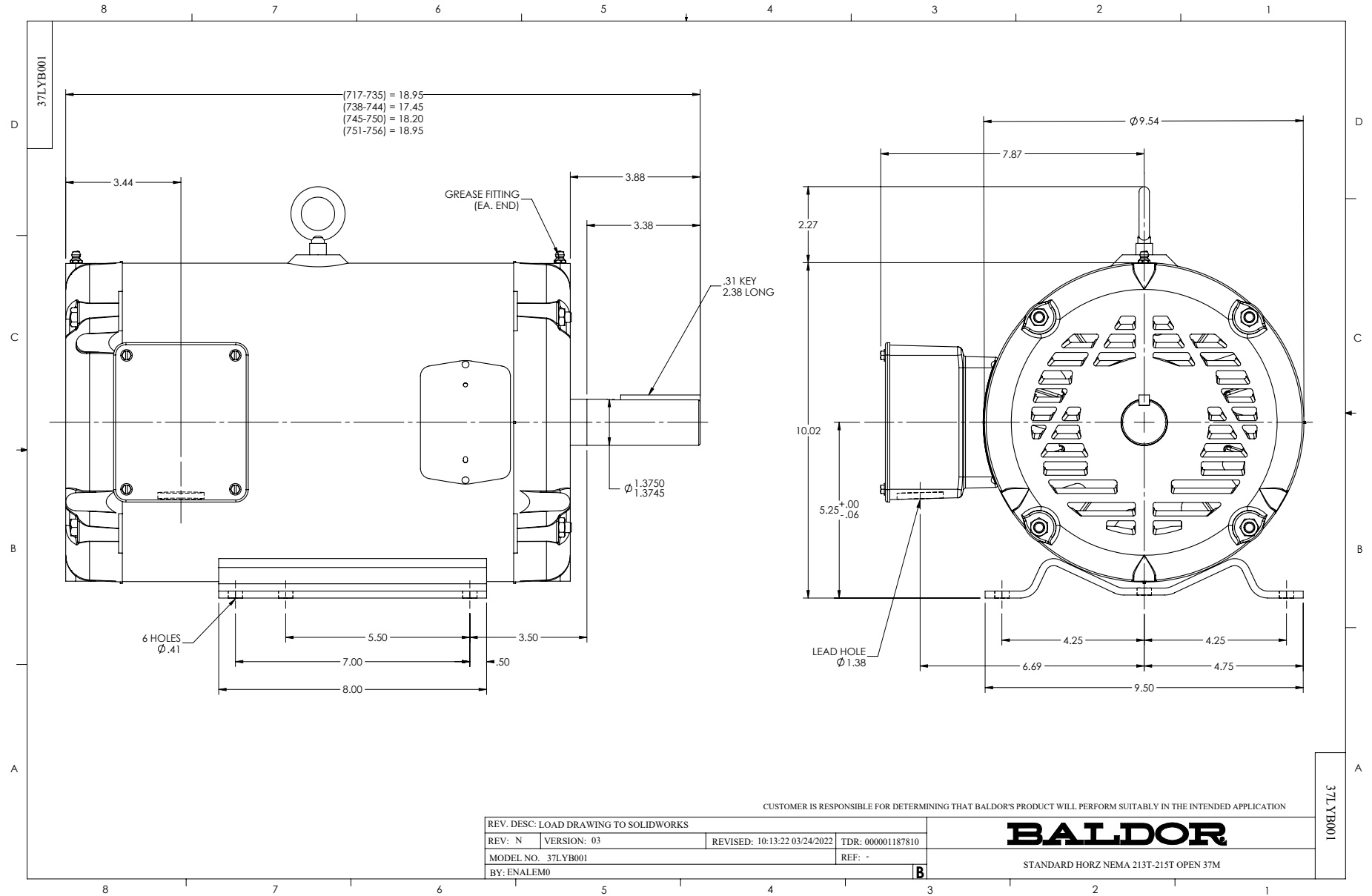
1.9 HP 3 PH 60 HZ 864 RPM 230 V 3734M

Typical performance - not guaranteed values.

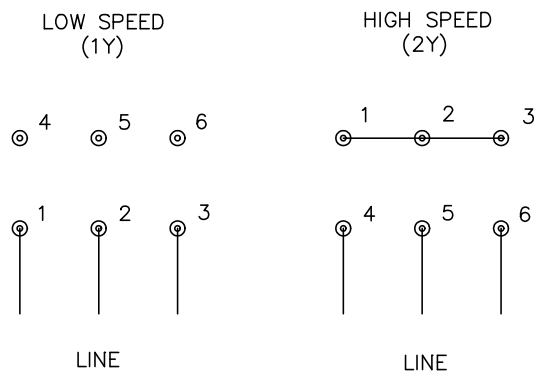
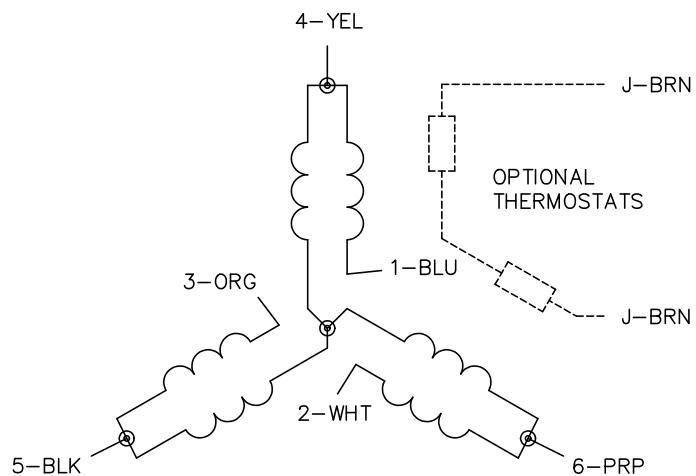
TORQUES (LB-FT): PO=31.64 PU=21.87 LR=24.3 LRA=34.15



1/29/2023 ACPERF, record # 85842



CD0032



NOTES:

1. INTERCHANGE ANY TWO LINE LEADS TO REVERSE ROTATION.
2. OPTIONAL THERMOSTATS ARE PROVIDED WHEN SPECIFIED.
3. ACTUAL NUMBER OF INTERNAL PARALLEL CIRCUITS MAY BE A MULTIPLE OF THOSE SHOWN ABOVE.
4. LEAD COLORS ARE OPTIONAL. LEADS MUST ALWAYS BE NUMBERED AS SHOWN.

REV. DESC: REVISE TO SHOW OPTIONAL COLORS			
REV. LTR: E	BY: JLP	REVISED: 01/22/99 8:27	TDR: 0171435
CD0032		FILE: AAA00005145	MDL: -
		MTL: -	

**BALDOR ELECTRIC Co.**

3PH, SV, 6 LEADS, 2-SPEED 1-WINDING VARIABLE TORQUE

CD0032