

**BALDOR® • RELIANCE** 

**Product Information Packet**

**M1555T**

**1.5/.38HP, 1725/850RPM, 3PH, 60HZ, 145T, 3528**

Part Detail							
Revision:	M	Status:	PRD/A	Change #:		Proprietary:	No
Type:	AC	Elec. Spec:	35WGS199	CD Diagram:	CD0032	Mfg Plant:	
Mech. Spec:	35AA001	Layout:	35LYAA001	Poles:	04/08	Created Date:	12-22-2009
Base:	RG	Eff. Date:	03-13-2018	Leads:	6#18		

Specs			
Catalog Number:	M1555T	Heater Indicator:	No Heater
Enclosure:	TEFC	Insulation Class:	F
Frame:	145T	Inverter Code:	Not Inverter
Frame Material:	Steel	IP Rating:	NONE
Motor Letter Type:	Three Phase	KVA Code:	F
Output @ Frequency:	1.500 HP @ 60 HZ	Lifting Lugs:	No Lifting Lugs
	.380 HP @ 60 HZ	Locked Bearing Indicator:	No Locked Bearing
Synchronous Speed @ Frequency:	1800 RPM @ 60 HZ	Motor Lead Quantity/Wire Size:	6 @ 18 AWG
Voltage @ Frequency:	208.0 V @ 60 HZ	Motor Lead Exit:	Ko Box
	230.0 V @ 60 HZ	Motor Lead Termination:	Flying Leads
XP Class and Group:	None	Motor Type:	3528M
XP Division:	Not Applicable	Mounting Arrangement:	F1
Agency Approvals:	UR	Product Family:	General Purpose
	CSA	Pulley End Bearing Type:	Ball
Auxillary Box:	No Auxillary Box	Pulley Face Code:	Standard
Auxillary Box Lead Termination:	None	Pulley Shaft Indicator:	Standard
Base Indicator:	Rigid	Rodent Screen:	None
Bearing Grease Type:	Polyrex EM (-20F +300F)	Shaft Extension Location:	Pulley End

<b>Blower:</b>	None	<b>Shaft Ground Indicator:</b>	No Shaft Grounding
<b>Current @ Voltage:</b>	2.400 A @ 230.0 V	<b>Shaft Rotation:</b>	Reversible
	4.800 A @ 208.0 V	<b>Shaft Slinger Indicator:</b>	No Slinger
<b>Design Code:</b>	B	<b>Speed Code:</b>	2S-1W-VT
<b>Drip Cover:</b>	No Drip Cover	<b>Motor Standards:</b>	NEMA
<b>Duty Rating:</b>	CONT	<b>Starting Method:</b>	Direct on line
<b>Electrically Isolated Bearing:</b>	Not Electrically Isolated	<b>Thermal Device - Bearing:</b>	None
<b>Feedback Device:</b>	NO FEEDBACK	<b>Thermal Device - Winding:</b>	None
<b>Front Face Code:</b>	Standard	<b>Vibration Sensor Indicator:</b>	No Vibration Sensor
<b>Front Shaft Indicator:</b>	None	<b>Winding Thermal 1:</b>	None
		<b>Winding Thermal 2:</b>	None

Nameplate NP1256L										
CAT.NO.	M1555T									
SPEC.	35AA001S199									
HP	1.5/.38									
VOLTS	208-230									
AMP	4.8/2.4									
RPM	1725/850									
FRAME	145T				HZ	60			PH	3
SER.F.	1.15		CODE	F	DES	B		CLASS	F	
NEMA-NOM-EFF			PF							
RATING	40C AMB-CONT									
CC					USABLE AT 208V					
DE	6205				ODE	6203				
ENCL	TEFC		SN							

Parts List		
Part Number	Description	Quantity
SA189011	SA 35AA001S199	1.000 EA
RA176730	RA 35AA001S199	1.000 EA
NS2512A01	INSULATOR, CONDUIT BOX X	1.000 EA
35CB3009	35 CB W/1.09 DIA. LEAD HOLE @ 6:	1.000 EA
36GS1000SP	GASKET-CONDUIT BOX, .06 THICK #SV-330 LE	1.000 EA
51XB1016A07	10-16 X 7/16 HXWSSLD SERTYB	2.000 EA
11XW1032G06	10-32 X .38, TAPTITE II, HEX WSHR SLTD U	1.000 EA
35EP3122A00	MASTER ODE,203 BRG,.683SH,#26 DRN,GRSR,F	1.000 EA
HW4500A01	1641B(ALEMITE)400 UNIV, GREASE FITT	1.000 EA
HW5100A03	WAVY WASHER (W1543-017)	1.000 EA
35EP3123F00	MASTER DE,205 BRG,.998SH,#26 DRN,GRSR	1.000 EA
HW4500A01	1641B(ALEMITE)400 UNIV, GREASE FITT	1.000 EA
XY1032A02	10-32 HEX NUT DIRECTIONAL SERRATION	4.000 EA
51XB1214A16	12-14X1.00 HXWSSLD SERTYB	1.000 EA
35FH4005A84SP	IEC FH W/GRSR, NO DIMPLES PRIMED	1.000 EA
51XW1032A06	10-32 X .38, TAPTITE II, HEX WSHR SLTD S	3.000 EA
35CB4521GX	CONDUIT BOX LID KIT **ORDER INDIV PARTS	1.000 EA
51XW0832A07	8-32 X .44, TAPTITE II, HEX WSHR SLTD SE	4.000 EA
HW2501D13	KEY, 3/16 SQ X 1.375	1.000 EA
HA7000A01	KEY RETAINER 7/8" DIA SHAFT	1.000 EA
85XU0407S04	4X1/4 U DRIVE PIN STAINLESS	2.000 EA
MJ1000A02	GREASE, POLYREX EM EXXON	0.050 LB
35FN3002A05SP	EXFN, PLASTIC, 6.376 OD, .638 ID	1.000 EA
MG1000G27	MED CHARCOAL METALLIC GREY 400-0096	0.017 GA

<b>Parts List (continued)</b>		
<b>Part Number</b>	<b>Description</b>	<b>Quantity</b>
HA3100A18	THRUBOLT 10-32 X 9.250	4.000 EA
LB1119N	WARNING LABEL	1.000 EA
LC0032	CONNECTION LABEL	1.000 EA
NP1256L	ALUM UL CSA CC INDUSTRIAL MOTOR A60	1.000 EA
36PA1000	PKG GRP, PRINT PK1016A06	1.000 EA
MN416A01	TAG-INSTAL-MAINT no wire (2200bx) 4/22	1.000 EA
PE-0000001	ZRTG PE ASSEMBLY	1.000 EA
FE-0000001	ZRTG FE ASSEMBLY	1.000 EA

<b>Accessories</b>		
<b>Part Number</b>	<b>Description</b>	<b>Multiplier</b>
35-8762	C FACE KIT	A8
35EP1506A01SP	D-FLANGE KIT	A8

**AC Induction Motor Performance Data**

Record # 61332

Typical performance - not guaranteed values

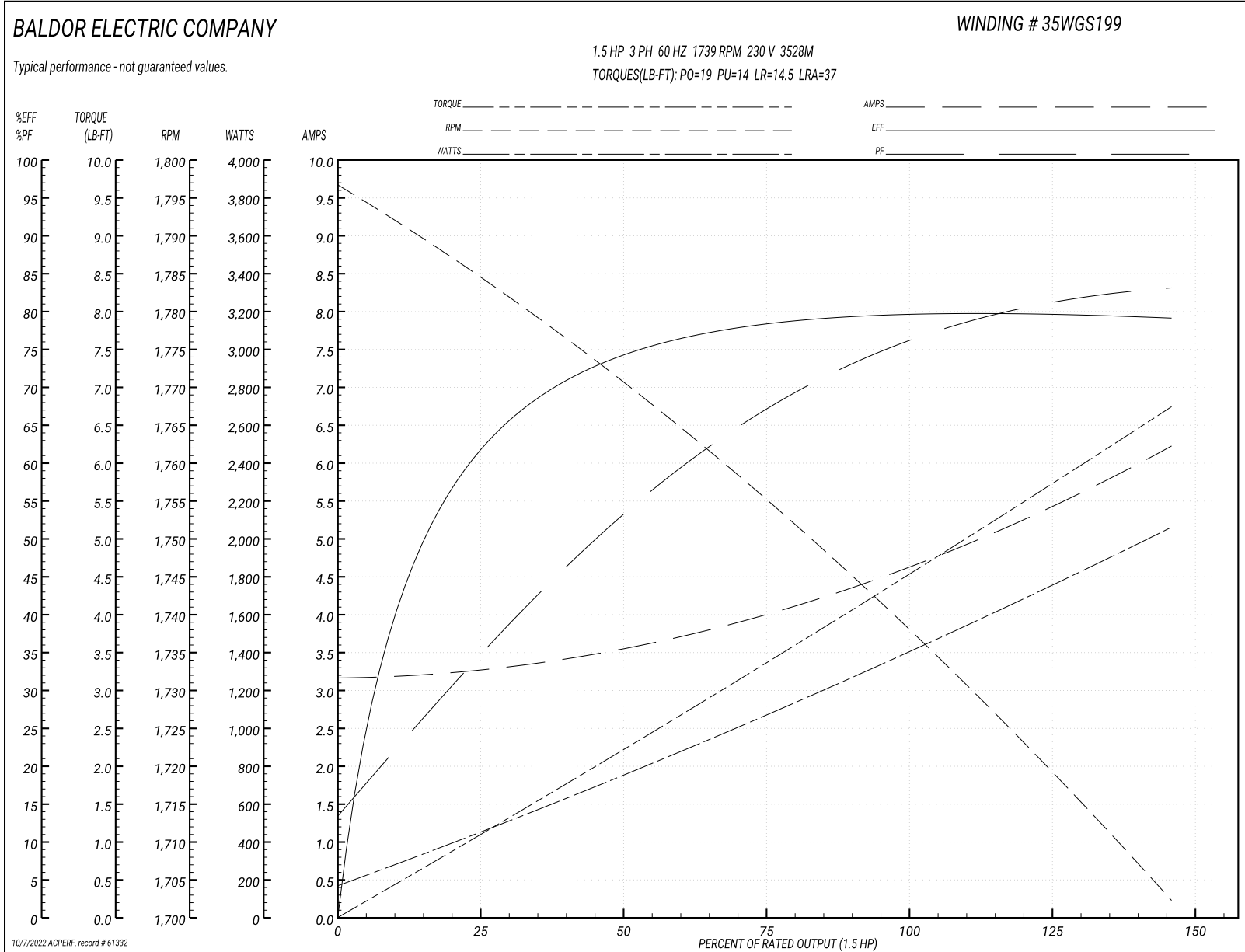
Winding: 35WGS199-R003			Type: 3528M	Enclosure: TEFC		
<b>Nameplate Data</b>				<b>230 V, 60 Hz: High Speed Connection</b>		
Rated Output (HP)	1.5/.38		Full Load Torque	4.5 LB-FT		
Volts	208-230		Start Configuration	direct on line		
Full Load Amps	4.8/2.4		Breakdown Torque	19 LB-FT		
R.P.M.	1725/850		Pull-up Torque	14 LB-FT		
Hz	60 Phase	3	Locked-rotor Torque	14.5 LB-FT		
NEMA Design Code	B KVA Code	F	Starting Current	37 A		
Service Factor (S.F.)	1.15		No-load Current	3.2 A		
NEMA Nom. Eff.	0 Power Factor	0	Line-line Res. @ 25°C	3.21 Ω		
Rating - Duty	40C AMB-CONT		Temp. Rise @ Rated Load	67°C		
S.F. Amps			Temp. Rise @ S.F. Load	77°C		
			Locked-rotor Power Factor	75.2		
			Rotor inertia	0.166 LB-FT <sup>2</sup>		

**Load Characteristics 230 V, 60 Hz, 1.5 HP**

% of Rated Load	25	50	75	100	125	150	S.F.
Power Factor	36	53	67	76	80	84	78
Efficiency	61.8	74	78.5	79.8	79.9	79	79.9
Speed	1784	1770	1755	1739	1721	1702	1728
Line amperes	3.2	3.6	4	4.6	5.4	6.2	5.08



Performance Graph at 230V, 60Hz, 1.5HP Typical performance - Not guaranteed values



**AC Induction Motor Performance Data**

Record # 61334

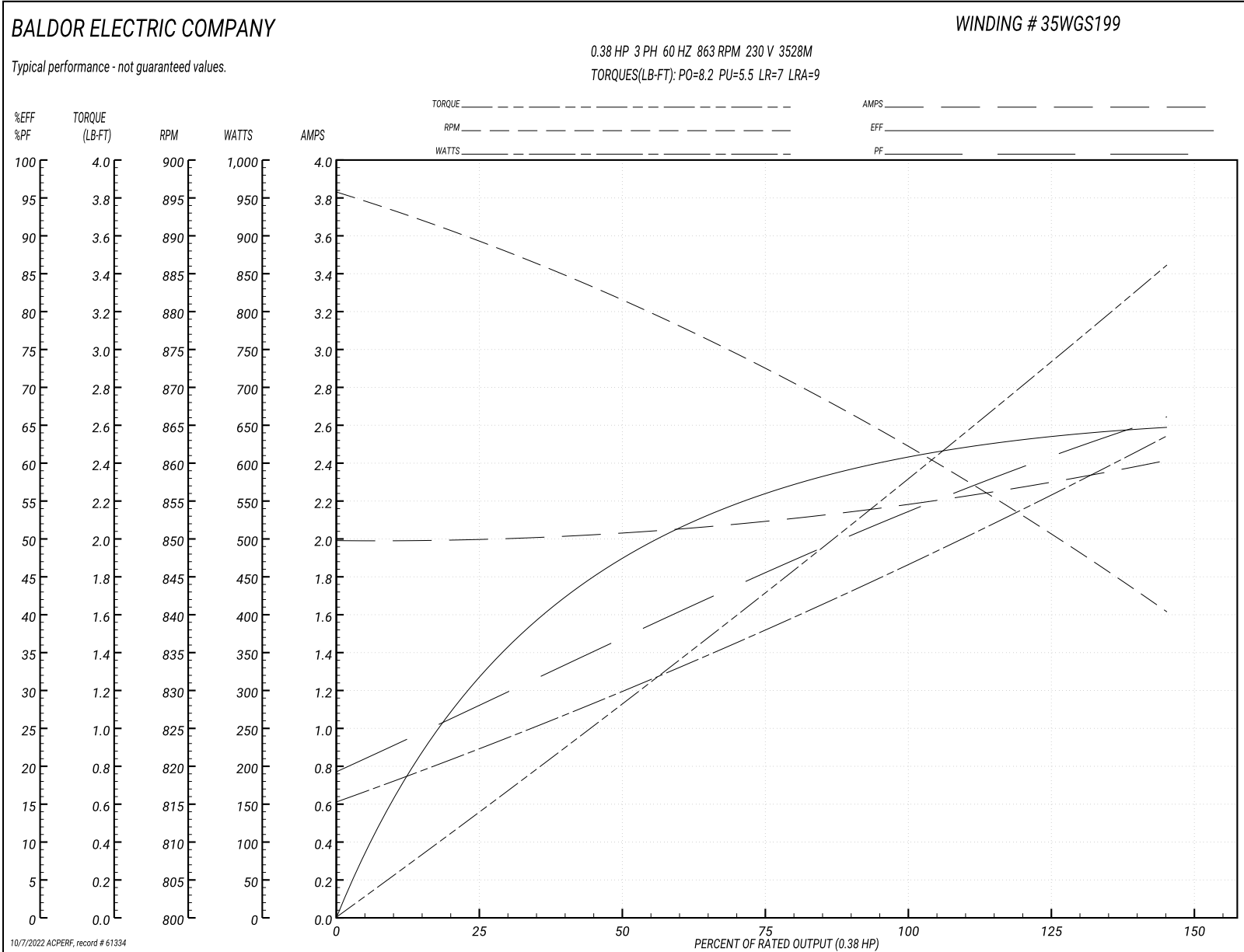
Typical performance - not guaranteed values

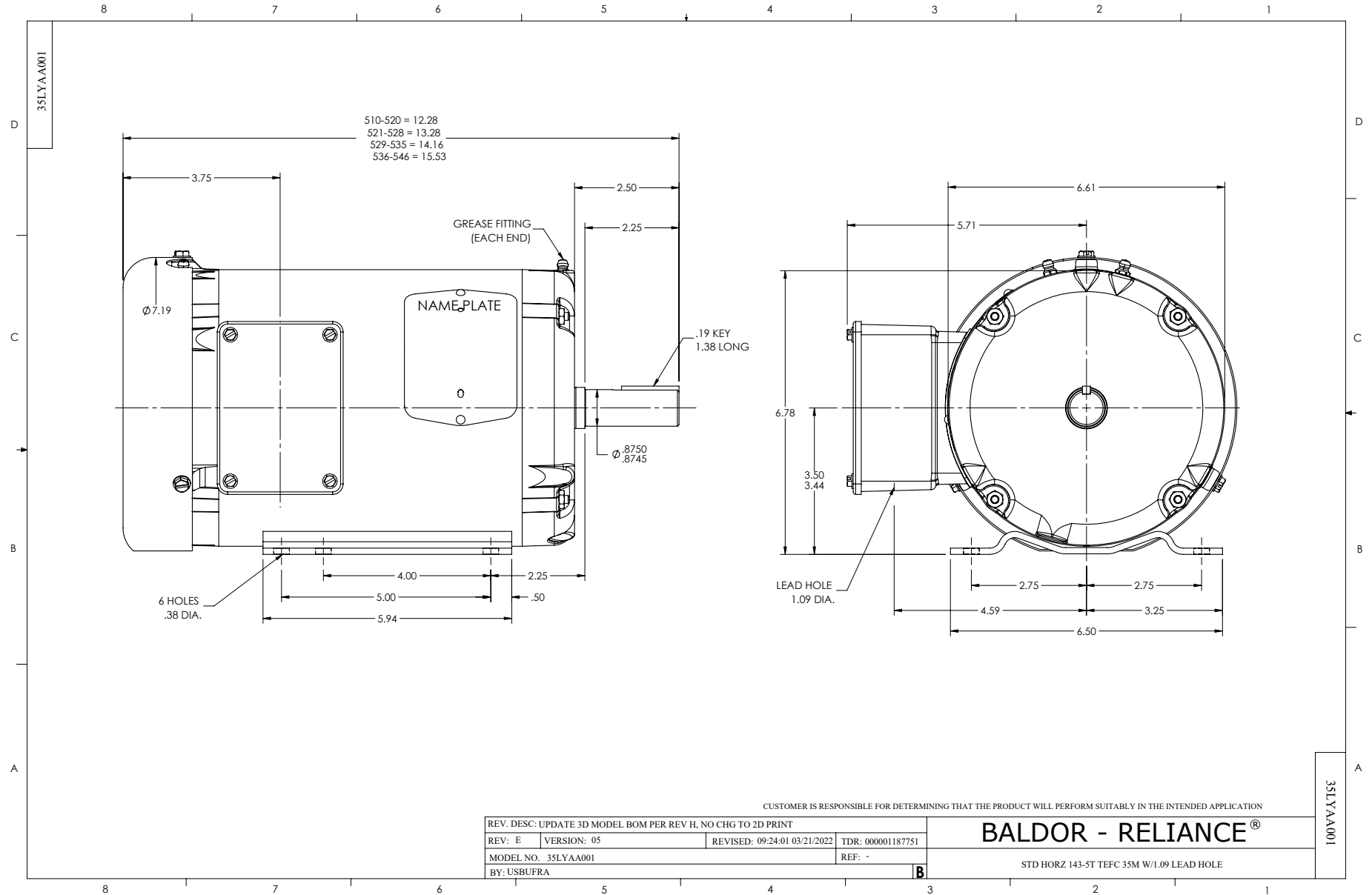
Winding: 35WGS199-R003			Type: 3528M	Enclosure: TEFC		
<b>Nameplate Data</b>				<b>230 V, 60 Hz: Low Speed Connection</b>		
Rated Output (HP)	1.5/.38		Full Load Torque	2.3 LB-FT		
Volts	208-230		Start Configuration	direct on line		
Full Load Amps	4.8/2.4		Breakdown Torque	8.2 LB-FT		
R.P.M.	1725/850		Pull-up Torque	5.5 LB-FT		
Hz	60 Phase	3	Locked-rotor Torque	7 LB-FT		
NEMA Design Code	B KVA Code	F	Starting Current	9 A		
Service Factor (S.F.)	1.15		No-load Current	2 A		
NEMA Nom. Eff.	0 Power Factor	0	Line-line Res. @ 25°C	12.8 Ω		
Rating - Duty	40C AMB-CONT		Temp. Rise @ Rated Load	52°C		
S.F. Amps			Temp. Rise @ S.F. Load	57°C		
			Locked-rotor Power Factor	68.1		
			Rotor inertia	0.166 LB-FT <sup>2</sup>		

**Load Characteristics 230 V, 60 Hz, 0.38 HP**

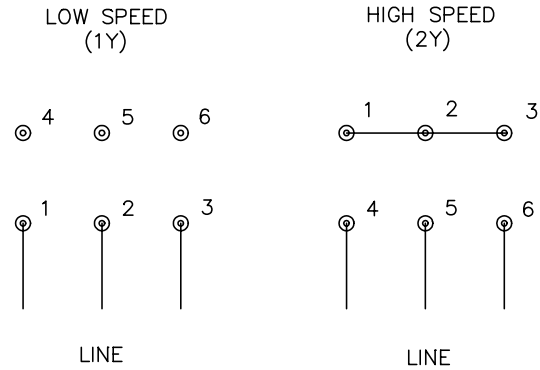
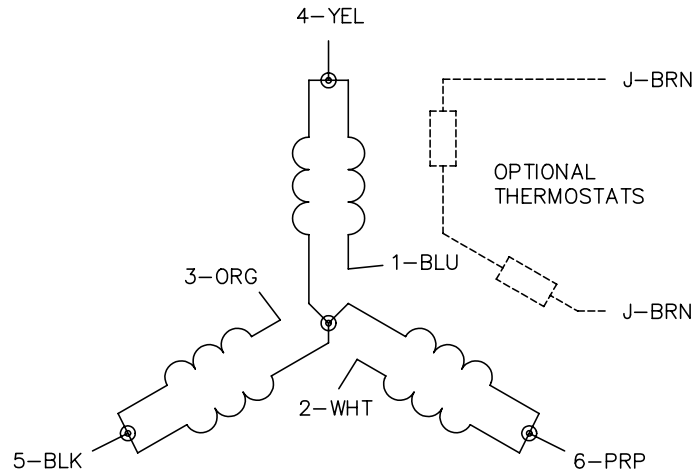
% of Rated Load	25	50	75	100	125	150	S.F.
Power Factor	28	38	46	53	60	67	57
Efficiency	32	47.5	56.2	60.9	63.6	64.5	62.5
Speed	889	881	872	863	852	840	856
Line amperes	2	2	2.1	2.2	2.3	2.4	2.26

Performance Graph at 230V, 60Hz, 0.38HP Typical performance - Not guaranteed values





CD0032



NOTES:

1. INTERCHANGE ANY TWO LINE LEADS TO REVERSE ROTATION.
2. OPTIONAL THERMOSTATS ARE PROVIDED WHEN SPECIFIED.
3. ACTUAL NUMBER OF INTERNAL PARALLEL CIRCUITS MAY BE A MULTIPLE OF THOSE SHOWN ABOVE.
4. LEAD COLORS ARE OPTIONAL. LEADS MUST ALWAYS BE NUMBERED AS SHOWN.

REV. DESC: REVISE TO SHOW OPTIONAL COLORS			
REV. LTR: E	BY: JLP	REVISED: 01/22/99 8:27	TDR: 0171435
CD0032		FILE: AAA00005145	MDL: -
		MTL: -	

**BALDOR ELECTRIC Co.**

3PH, SV, 6 LEADS, 2-SPEED 1-WINDING VARIABLE TORQUE

CD0032