

BALDOR • RELIANCE

Customer information packet

M1713T

25/13HP, 1760/870RPM, 3PH, 60HZ, 286T, 1048M

Class - None

Division - Not Applicable

Specifications

Enclosure	TEFC
Frame	286T
Frame Material	Iron
Frequency	60.00 Hz
Motor Letter Type	Three Phase
Output @ Frequency	25.000 HP @ 60 HZ 13.000 HP @ 60 HZ
Phase	3
Synchronous Speed @ Frequency	1800 RPM @ 60 HZ
Voltage @ Frequency	460.0 V @ 60 HZ
XP Class and Group	None
XP Division	Not Applicable
Agency Approvals	UR CSA
Ambient Temperature	40 °C
Auxillary Box	No Auxillary Box
Auxillary Box Lead Termination	None
Base Indicator	Rigid
Bearing Grease Type	Polyrex EM (-20F +300F)
Blower	None
Current @ Voltage	29.000 A @ 460.0 V
Design Code	B
Drip Cover	No Drip Cover
Duty Rating	CONT
Electrically Isolated Bearing	Not Electrically Isolated
Feedback Device	NO FEEDBACK
Front Face Code	Standard
Front Shaft Indicator	None
Heater Indicator	No Heater
High Voltage Full Load Amps	27.0 a
Insulation Class	F
Inverter Code	Not Inverter

Part detail

Revision	AA
Type	AC
Mech. spec.	10C151
Base	
Status	PRD/A
Elec. spec.	10WGW425
Layout	10LYC151
Eff. date	06-16-2021
CD Diagram	CD0011
Poles	04/08
Leads	6#10
Proprietary	False
Created date	01-01-0001

KVA Code	F
Lifting Lugs	Standard Lifting Lugs
Locked Bearing Indicator	Locked Bearing
Motor Lead Exit	Ko Box
Motor Lead Quantity/Wire Size	6 @ 10 AWG
Motor Lead Termination	Flying Leads
Motor Standards	NEMA
Motor Type	1048M
Mounting Arrangement	F1
Number of Poles	4 8
Overall Length	27.76 IN
Product Family	General Purpose
Pulley End Bearing Type	Ball
Pulley Face Code	Standard
Pulley Shaft Indicator	Standard
Rodent Screen	None
Service Factor	1.15
Shaft Diameter	1.875 IN
Shaft Extension Location	Pulley End
Shaft Ground Indicator	No Shaft Grounding
Shaft Rotation	Reversible
Shaft Slinger Indicator	Shaft Slinger
Speed	1760 rpm 880 rpm
Speed Code	2S-1W-CT
Starting Method	Direct on line
Thermal Device - Bearing	NONE (OLD)
Thermal Device - Winding	None
Vibration Sensor Indicator	No Vibration Sensor
Winding Thermal 1	None
Winding Thermal 2	None

Nameplate

NP1256L									
CAT.NO.	M1713T								
SPEC.	10C151W425								
HP	25/13								
VOLTS	460								
AMP	29/27								
RPM	1760/880								
FRAME	286T		HZ	60		PH	3		
SER.F.	1.15	CODE	F	DES	B	CLASS	F		
NEMA-NOM-EFF		PF							
RATING	40C AMB-CONT								
CC		USABLE AT 208V							
DE	6311	ODE	6309						
ENCL	TEFC	SN							

Parts list

Part number	Description	Quantity
SA013426	SA 10C151W425	1.000 ea
RA009623	RA 10C151W425	1.000 ea
10CB3000SP	KOBX, CAST W/2.00 LEAD HOLE	1.000 ea
09GS1000	GASKET-CONDUIT BOX, 1/16 THICK LEXIDE	1.000 ea
10XN3118K12	5/16-18 X .75 GRADE 5, ZINC PLATED	4.000 ea
HW1001A31	LOCKWASHER 5/16, ZINC PLT.591 OD, .319 I	4.000 ea
WD1000B25	GND LUG, BURNDY L125HP OR T&B L125HP-BB	1.000 ea
19XW3118G08	.31-18X.50,HEX WSHR HD,TAPTITE 2,GREEN	1.000 ea
10EP1106A01	FR ENDPLATE, MACH	1.000 ea
10XN3816K32	BOLT, 3/8-16X2 HH YZ(5)	4.000 ea
HW1001A38	LOCKWASHER 3/8, ZINC PLT .688 OD, .382 I	4.000 ea
HW5100A11	W3917-042 WVY WSHR (WB)	1.000 ea
10XN2520K36	1/4-20 X 2.00 HX HD SCRW GRADE 5, ZINC P	2.000 ea
HW1001A25	LOCKWASHER 1/4, ZINC PLT .493 OD, .255 I	2.000 ea
10XN3118K40	5/16-18 X 2.50" HEX HD, GRADE 5	4.000 ea
HW1001A31	LOCKWASHER 5/16, ZINC PLT.591 OD, .319 I	4.000 ea
10EP1105A01	PU ENDPLATE	1.000 ea
10XN3816K28	3/8-16 X 1.75 HEX HD CAP SCREW, GRADE 5	4.000 ea
HW1001A38	LOCKWASHER 3/8, ZINC PLT .688 OD, .382 I	4.000 ea
10FH4000	310 FAN HOUSING STAMPED	1.000 ea
51XF2520A08	SCREW, HEX SER SLT HD, ZN 1/4-20 X .50 L	4.000 ea
10CB3500SP	CONDUIT BOX LID, CAST	1.000 ea
51XW2520A12	.25-20 X .75, TAPTITE II, HEX WSHR SLTD	4.000 ea
HW4600B40	V-RING SLINGER 2.000 X 2.680 X .28 VITON	1.000 ea
HW2501H28	KEY, 1/2 SQ X 3.250	1.000 ea
LB1115N	LABEL,LIFTING DEVICE (ON ROLLS)	1.000 ea
HA4051A00	PLASTIC CAP FOR GREASE FITTING	1.000 ea
HW4500A21	1618BALEMITE FITTING 825 UNIVERSAL	1.000 ea
HA4017A01	1/8 X 4 GREASE EXT (F/S)	1.000 ea
HW4500A17	317400 ALEMITE GREASE RELIEF	1.000 ea
HA4054	SHORT T-DRAIN FITTING, .125" N.P.T.	1.000 ea

MJ1000A02	GREASE, POLYREX EM EXXON	0.130 lb
HA4051A00	PLASTIC CAP FOR GREASE FITTING	1.000 ea
HW4500A03	GREASE FITTING, .125 NPT 1610(ALEMITE) 8	1.000 ea
HW4500A17	317400 ALEMITE GREASE RELIEF	1.000 ea
HA4054	SHORT T-DRAIN FITTING, .125" N.P.T.	1.000 ea
10GS1000	GASKET, CONDUIT BOX LID	1.000 ea
85XU0407S04	4X1/4 U DRIVE PIN STAINLESS	2.000 ea
MN416A01	TAG-INSTAL-MAINT no wire (2100bx)4/22	1.000 ea
10FN3001A01	EXTERNAL FAN	1.000 ea
HW2500A25	WOODRUFF KEY USA #1008 #BLOW CARBON STEE	1.000 ea
HA6390A01	HOSE CLAMP FOR 3.12 DIA S.S. OR PLATED	1.000 ea
MG1000G27	MED CHARCOAL METALLIC GREY 400-0096	0.125 ga
LB1119N	WARNING LABEL	1.000 ea
LC0032	CONNECTION LABEL	1.000 ea
NP1256L	ALUM UL CSA CC INDUSTRIAL MOTOR A60	1.000 ea
10PA1000	PACKAGING GROUP COMBINED PRINT PK1023A06	1.000 ea
FE-0000022	ZRTG FE ASSEMBLY	1.000 ea
PE-0000013	ZRTG PE ASSEMBLY	1.000 ea

Accessories

Part number	Description	Multiplier
10-1305	C FACE KIT	A8
10EP1502A01SP	D-FLANGE KIT	A8

AC Induction Motor Performance Data

Record # 30626

Typical performance - not guaranteed values

Winding: 10WGW425-R003		Type: 1048M	Enclosure: TEFC		
Nameplate Data			460 V, 60 Hz: High Speed Connection		
Rated Output (HP)	25/13	Full Load Torque	74.44 LB-FT		
Volts	460	Start Configuration	direct on line		
Full Load Amps	29/27	Breakdown Torque	184 LB-FT		
R.P.M.	1760/880	Pull-up Torque	100 LB-FT		
Hz	60 Phase	3	Locked-rotor Torque	123 LB-FT	
NEMA Design Code	B	KVA Code	F	Starting Current	171 A
Service Factor (S.F.)	1.15		No-load Current	9.05 A	
NEMA Nom. Eff.	0	Power Factor	0	Line-line Res. @ 25°C	0.504 Ω
Rating - Duty	40C AMB-CONT		Temp. Rise @ Rated Load	71°C	
S.F. Amps			Temp. Rise @ S.F. Load	90°C	
			Locked-rotor Power Factor	39.6	
			Rotor inertia	3.86 LB-FT ²	

Load Characteristics 460 V, 60 Hz, 25 HP

% of Rated Load	25	50	75	100	125	150	S.F.
Power Factor	60	80	86	89	90	90	87
Efficiency	86.9	91	91.4	90.5	89.5	87.2	89.6
Speed	1791	1783	1773	1761	1750	1737	1750
Line amperes	11.41	16.26	22.37	28.87	35.83	43.95	33.1

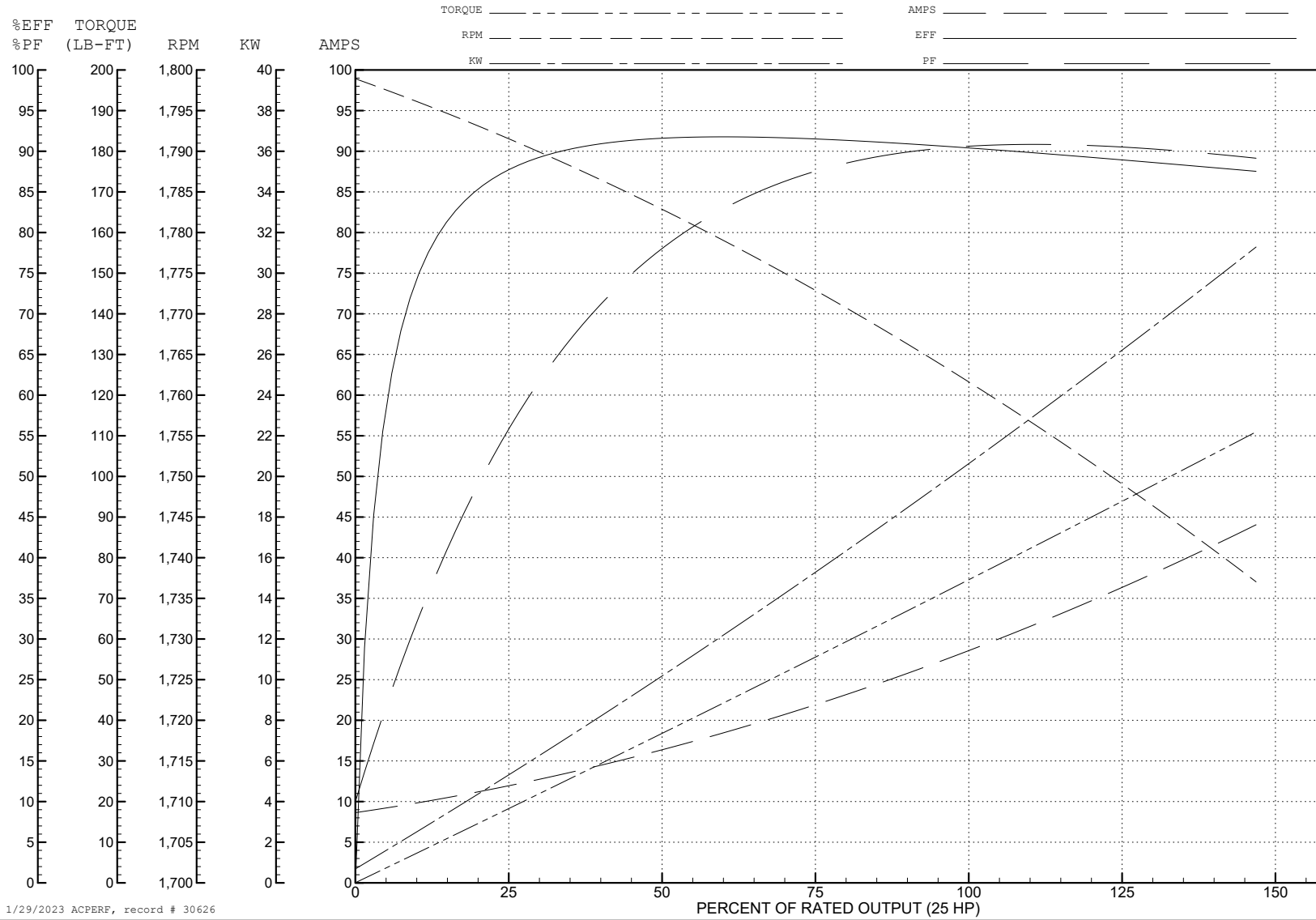
ABB Motors and Mechanical Inc.

WINDING # 10WGW425

Typical performance - not guaranteed values.

25 HP 3 PH 60 HZ 1761 RPM 460 V 1048M

TORQUES (LB-FT): PO=184 PU=100 LR=123 LRA=171



1/29/2023 ACPERF, record # 30626

AC Induction Motor Performance Data

Record # 30627

Typical performance - not guaranteed values

Winding: 10WGW425-R003		Type: 1048M	Enclosure: TEFC	
Nameplate Data			460 V, 60 Hz: Low Speed Connection	
Rated Output (HP)	25/13	Full Load Torque	81.41 LB-FT	
Volts	460	Start Configuration	direct on line	
Full Load Amps	29/27	Breakdown Torque	138 LB-FT	
R.P.M.	1760/880	Pull-up Torque	137 LB-FT	
Hz	60 Phase	Locked-rotor Torque	196 LB-FT	
NEMA Design Code	B KVA Code	F	Starting Current	107 A
Service Factor (S.F.)	1.15	No-load Current	20.59 A	
NEMA Nom. Eff.	0 Power Factor	0	Line-line Res. @ 25°C	0.69 Ω
Rating - Duty	40C AMB-CONT	Temp. Rise @ Rated Load	72°C	
S.F. Amps		Temp. Rise @ S.F. Load	77°C	
		Locked-rotor Power Factor	34.9	
		Rotor inertia	3.86 LB-FT ²	

Load Characteristics 460 V, 60 Hz, 13 HP

% of Rated Load	25	50	75	100	125	150	S.F.
Power Factor	21	35	46	55	60	64	59
Efficiency	73.9	83.2	86.3	87.1	87.2	86.2	87.5
Speed	895	890	886	880	875	868	875
Line amperes	21.02	22.31	24.24	26.82	30.25	34.02	26.3

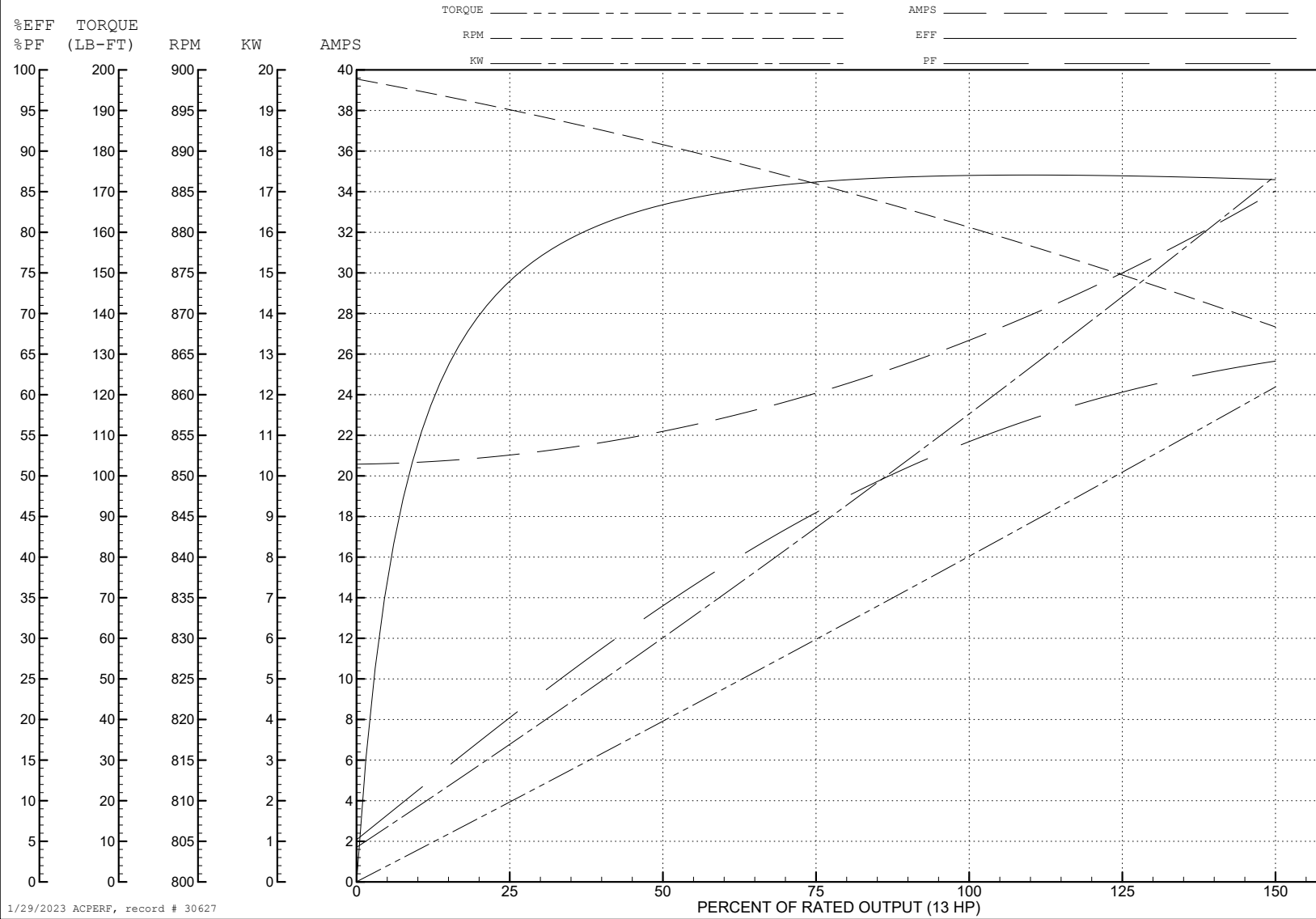
ABB Motors and Mechanical Inc.

WINDING # 10WGW425

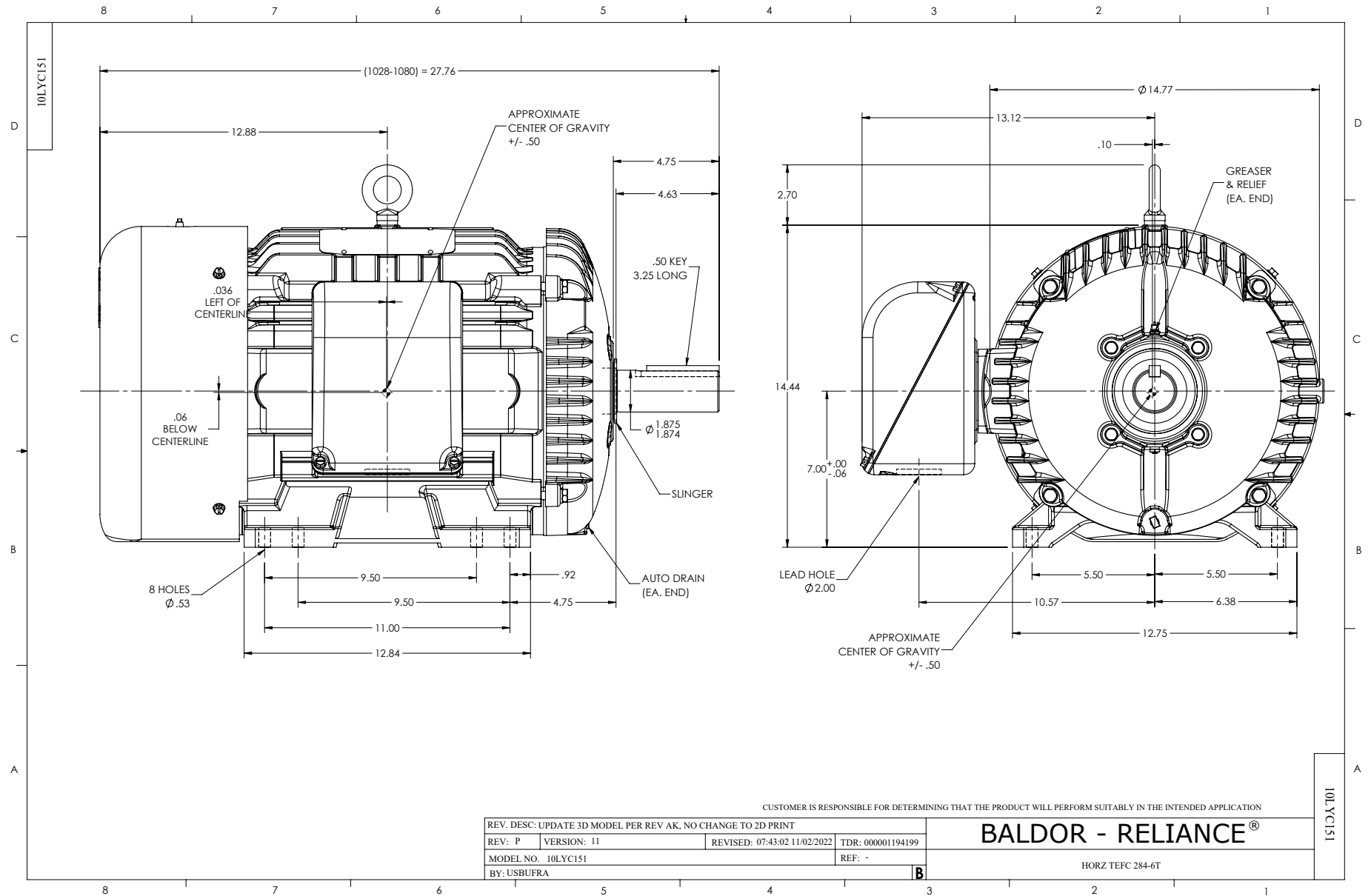
13 HP 3 PH 60 HZ 880 RPM 460 V 1048M

Typical performance - not guaranteed values.

TORQUES (LB-FT): PO=138 PU=137 LR=196 LRA=107



1/29/2023 ACPERF, record # 30627



CUSTOMER IS RESPONSIBLE FOR DETERMINING THAT THE PRODUCT WILL PERFORM SUITABLY IN THE INTENDED APPLICATION

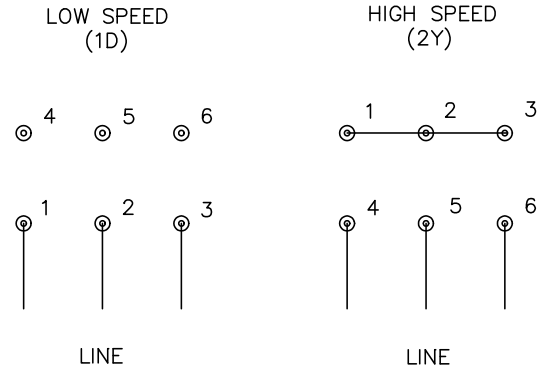
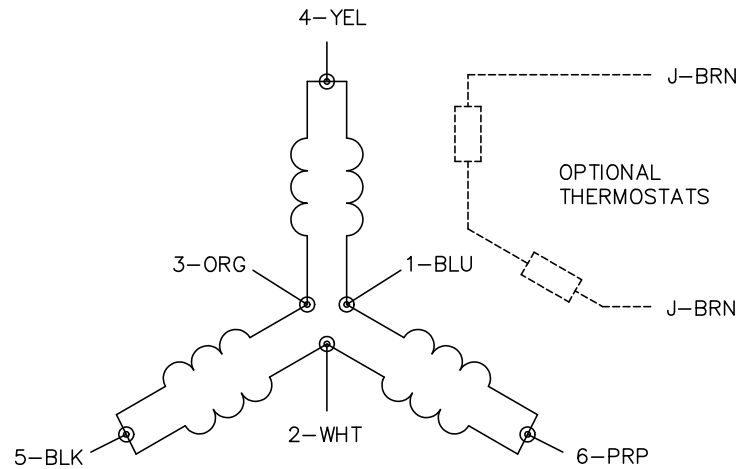
REV. DESC: UPDATE 3D MODEL PER REV AK, NO CHANGE TO 2D PRINT			
REV: P	VERSION: 11	REVISED: 07:43:02 11/02/2022	TDR: 000001194199
MODEL NO. 10LYC151		REF: -	
BY: USBUFRA		B	

BALDOR - RELIANCE®

HORZ TEFC 284-6T

10LYC151

CD0011



NOTES:

1. INTERCHANGE ANY TWO LINE LEADS TO REVERSE ROTATION.
2. OPTIONAL THERMOSTATS ARE PROVIDED WHEN SPECIFIED.
3. ACTUAL NUMBER OF INTERNAL PARALLEL CIRCUITS MAY BE A MULTIPLE OF THOSE SHOWN ABOVE.
4. LEAD COLORS ARE OPTIONAL. LEADS MUST ALWAYS BE NUMBERED AS SHOWN.

CD0011

REV. DESC: REVISE TO SHOW OPTIONAL COLORS			
REV. LTR: F	BY: JLP	REVISED: 01/21/99 5:04	TDR: 0171435
110000		FILE: DWG\142.wg	MDL: -
		MTL: -	

BALDOR ELECTRIC Co.

3PH, SV, 6 LEADS, 2-SPEED 1-WINDING CONSTANT TORQUE