

**BALDOR® • RELIANCE** 

**Product Information Packet**

**M1720T**

**1/.44HP,1745/1165RPM,3PH,60HZ,145T,3521M**

Part Detail							
Revision:	L	Status:	PRD/A	Change #:		Proprietary:	No
Type:	AC	Elec. Spec:	35WGP585	CD Diagram:	CD0013	Mfg Plant:	
Mech. Spec:	35AA001	Layout:	35LYAA001	Poles:	04/06	Created Date:	12-21-2009
Base:	RG	Eff. Date:	03-13-2018	Leads:	6#18		

Specs			
Catalog Number:	M1720T	Inverter Code:	Not Inverter
Enclosure:	TEFC	IP Rating:	NONE
Frame:	145T	KVA Code:	L
Frame Material:	Steel	Lifting Lugs:	No Lifting Lugs
Output @ Frequency:	.440 HP @ 60 HZ	Locked Bearing Indicator:	No Locked Bearing
	1.000 HP @ 60 HZ	Motor Lead Quantity/Wire Size:	6 @ 18 AWG
Synchronous Speed @ Frequency:	1200 RPM @ 60 HZ	Motor Lead Exit:	Ko Box
Voltage @ Frequency:	460.0 V @ 60 HZ	Motor Lead Termination:	Flying Leads
XP Class and Group:	None	Motor Type:	3521M
XP Division:	Not Applicable	Mounting Arrangement:	F1
Agency Approvals:	UR	Product Family:	General Purpose
	CSA	Pulley End Bearing Type:	Ball
Auxillary Box:	No Auxillary Box	Pulley Face Code:	Standard
Auxillary Box Lead Termination:	None	Pulley Shaft Indicator:	Standard
Base Indicator:	Rigid	Rodent Screen:	None
Bearing Grease Type:	Polyrex EM (-20F +300F)	Shaft Extension Location:	Pulley End
Blower:	None	Shaft Ground Indicator:	No Shaft Grounding
Current @ Voltage:	1.630 A @ 460.0 V	Shaft Rotation:	Reversible

<b>Design Code:</b>	-	<b>Shaft Slinger Indicator:</b>	No Slinger
<b>Drip Cover:</b>	No Drip Cover	<b>Speed Code:</b>	2S-2W-VT
<b>Duty Rating:</b>	CONT	<b>Motor Standards:</b>	NEMA
<b>Electrically Isolated Bearing:</b>	Not Electrically Isolated	<b>Starting Method:</b>	Direct on line
<b>Feedback Device:</b>	NO FEEDBACK	<b>Thermal Device - Bearing:</b>	None
<b>Front Face Code:</b>	Standard	<b>Thermal Device - Winding:</b>	None
<b>Front Shaft Indicator:</b>	None	<b>Vibration Sensor Indicator:</b>	No Vibration Sensor
<b>Heater Indicator:</b>	No Heater	<b>Winding Thermal 1:</b>	None
<b>Insulation Class:</b>	F	<b>Winding Thermal 2:</b>	None

<b>Nameplate NP1256L</b>										
<b>CAT.NO.</b>	M1720T									
<b>SPEC.</b>	35AA001P585									
<b>HP</b>	1/.44									
<b>VOLTS</b>	460									
<b>AMP</b>	1.63/.93									
<b>RPM</b>	1745/1165									
<b>FRAME</b>	145T				<b>HZ</b>	60			<b>PH</b>	3
<b>SER.F.</b>	1.15		<b>CODE</b>	L	<b>DES</b>	-		<b>CLASS</b>	F	
<b>NEMA-NOM-EFF</b>			<b>PF</b>							
<b>RATING</b>	40C AMB-CONT									
<b>CC</b>									<b>USABLE AT 208V</b>	
<b>DE</b>	6205				<b>ODE</b>	6203				
<b>ENCL</b>	TEFC		<b>SN</b>							

Parts List		
Part Number	Description	Quantity
SA189002	SA 35AA001P585	1.000 EA
RA176721	RA 35AA001P585	1.000 EA
35FN3002A05SP	EXFN, PLASTIC, 6.376 OD, .638 ID	1.000 EA
NS2512A01	INSULATOR, CONDUIT BOX X	1.000 EA
35CB3009	35 CB W/1.09 DIA. LEAD HOLE @ 6:	1.000 EA
36GS1000SP	GASKET-CONDUIT BOX, .06 THICK #SV-330 LE	1.000 EA
51XB1016A07	10-16 X 7/16 HXWSSLD SERTYB	2.000 EA
11XW1032G06	10-32 X .38, TAPTITE II, HEX WSHR SLTD U	1.000 EA
35EP3122A00	MASTER ODE,203 BRG,.683SH,#26 DRN,GRSR,F	1.000 EA
HW4500A01	1641B(ALEMITE)400 UNIV, GREASE FITT	1.000 EA
HW5100A03	WAVY WASHER (W1543-017)	1.000 EA
35EP3123F00	MASTER DE,205 BRG,.998SH,#26 DRN,GRSR	1.000 EA
HW4500A01	1641B(ALEMITE)400 UNIV, GREASE FITT	1.000 EA
XY1032A02	10-32 HEX NUT DIRECTIONAL SERRATION	4.000 EA
51XB1214A16	12-14X1.00 HXWSSLD SERTYB	1.000 EA
35FH4005A84SP	IEC FH W/GRSR, NO DIMPLES PRIMED	1.000 EA
51XW1032A06	10-32 X .38, TAPTITE II, HEX WSHR SLTD S	3.000 EA
35CB4521GX	CONDUIT BOX LID KIT **ORDER INDIV PARTS	1.000 EA
51XW0832A07	8-32 X .44, TAPTITE II, HEX WSHR SLTD SE	4.000 EA
HW2501D13	KEY, 3/16 SQ X 1.375	1.000 EA
HA7000A01	KEY RETAINER 7/8" DIA SHAFT	1.000 EA
85XU0407S04	4X1/4 U DRIVE PIN STAINLESS	2.000 EA
MJ1000A02	GREASE, MOBIL POLYREX EM - 124047	0.050 LB
HA3100A18	THRUBOLT 10-32 X 9.250	4.000 EA

<b>Parts List (continued)</b>		
<b>Part Number</b>	<b>Description</b>	<b>Quantity</b>
MG1000G27	MED CHARCOAL METALLIC GREY 400-0096	0.017 GA
LB1119N	WARNING LABEL	1.000 EA
LC0013	CONNECTION LABEL	1.000 EA
NP1256L	ALUM UL CSA CC INDUSTRIAL MOTOR A60	1.000 EA
36PA1000	PKG GRP, PRINT PK1016A06	1.000 EA
MN416A01	TAG-INSTAL-MAINT no wire (1200/bx) 1/21	1.000 EA
PE-0000001	ZRTG PE ASSEMBLY	1.000 EA
FE-0000001	ZRTG FE ASSEMBLY	1.000 EA

<b>Accessories</b>		
<b>Part Number</b>	<b>Description</b>	<b>Multiplier</b>
35-8762	C FACE KIT	A8
35EP1506A01SP	D-FLANGE KIT	A8

**AC Induction Motor Performance Data**

Record # 27559

Typical performance - not guaranteed values

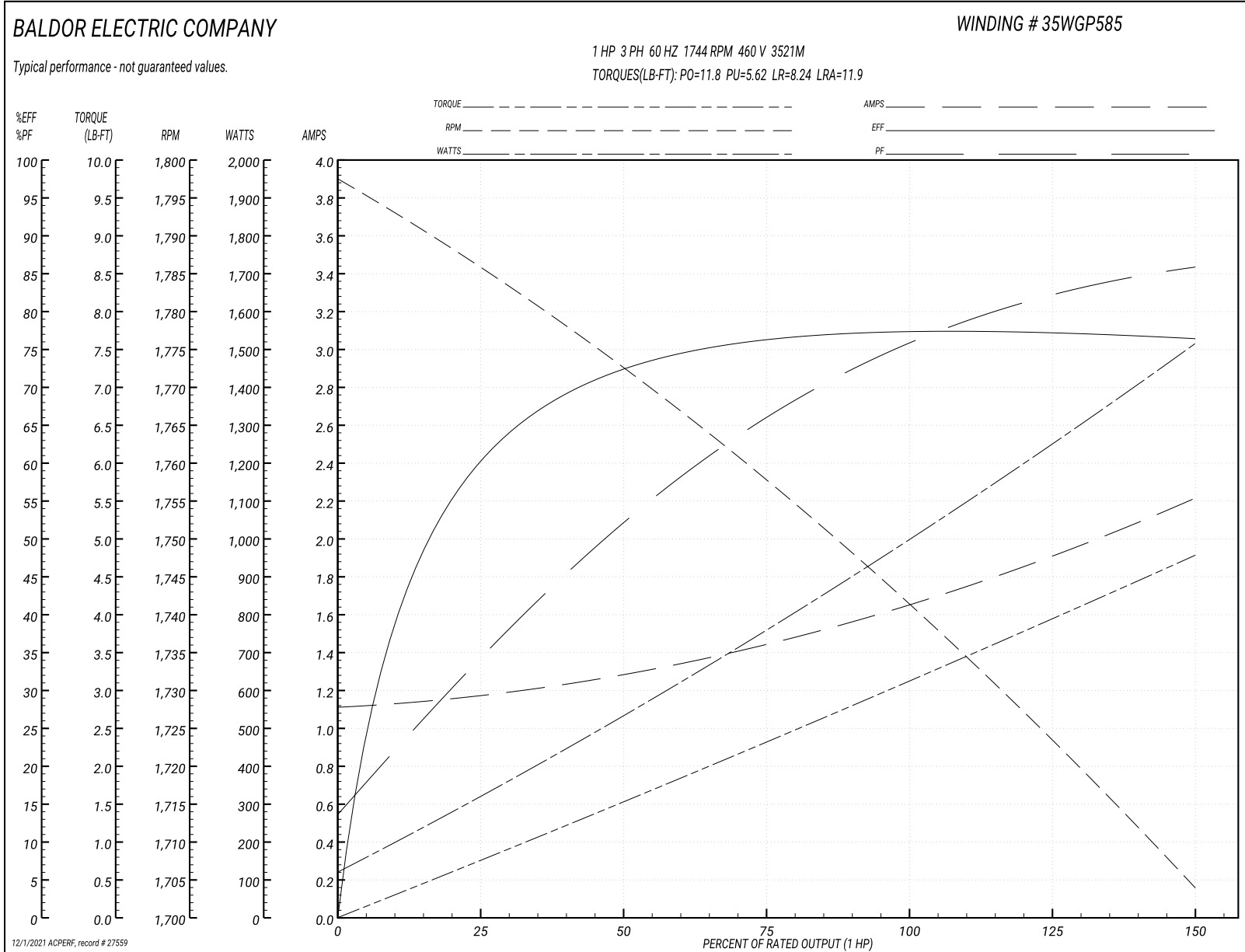
Winding: 35WGP585-R001		Type: 3521M	Enclosure: TEFC
<b>Nameplate Data</b>		<b>460 V, 60 Hz: High Speed Connection</b>	
Rated Output (HP)	1/.44	Full Load Torque	3.01 LB-FT
Volts	460	Start Configuration	direct on line
Full Load Amps	1.63/.93	Breakdown Torque	11.8 LB-FT
R.P.M.	1745/1165	Pull-up Torque	5.62 LB-FT
Hz	60 Phase	Locked-rotor Torque	8.24 LB-FT
NEMA Design Code	- KVA Code	Starting Current	11.9 A
Service Factor (S.F.)	1.15	No-load Current	1.12 A
NEMA Nom. Eff.	0 Power Factor	Line-line Res. @ 25°C	23.4 Ω
Rating - Duty	40C AMB-CONT	Temp. Rise @ Rated Load	44°C
S.F. Amps		Temp. Rise @ S.F. Load	54°C

**Load Characteristics 460 V, 60 Hz, 1 HP**

% of Rated Load	25	50	75	100	125	150	S.F.
Power Factor	34	51	65	75	81	87	79
Efficiency	60.1	72.6	76.9	78.2	77.9	76.4	78
Speed	1786	1773	1759	1744	1728	1703	1734
Line amperes	1.16	1.27	1.42	1.63	1.87	2.21	1.77



Performance Graph at 460V, 60Hz, 1.0HP Typical performance - Not guaranteed values



**AC Induction Motor Performance Data**

Record # 27560

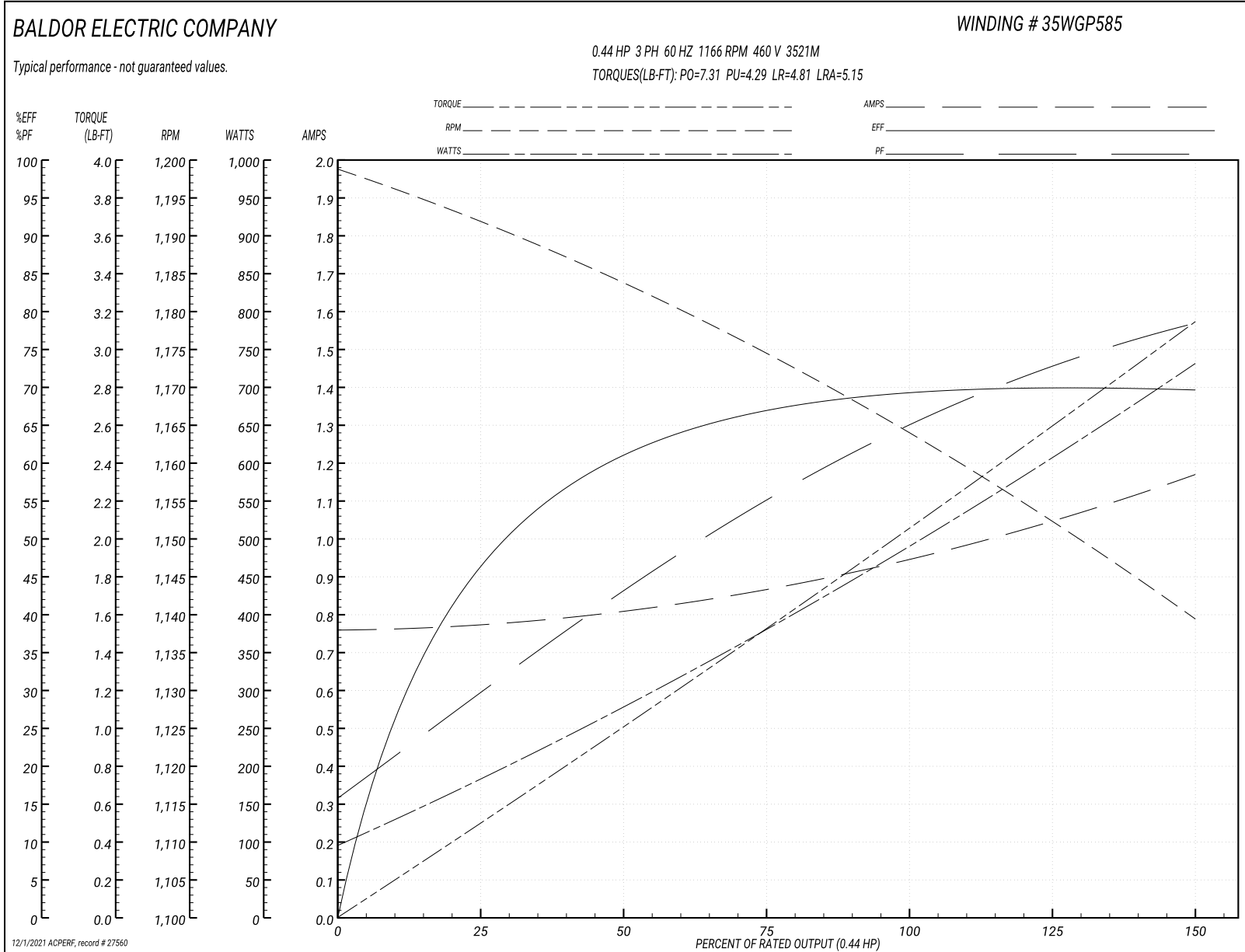
Typical performance - not guaranteed values

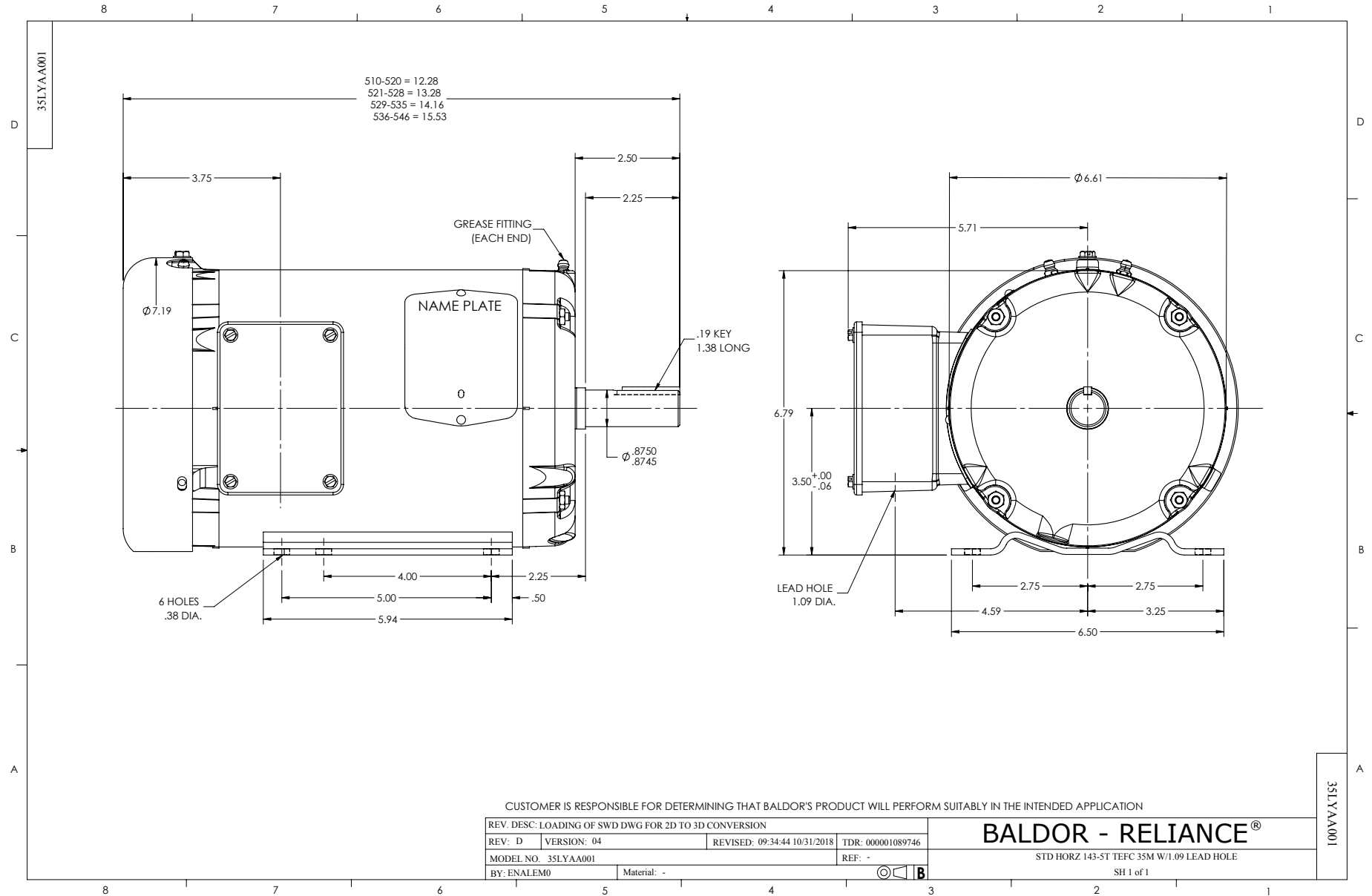
Winding: 35WGP585-R001		Type: 3521M	Enclosure: TEFC
<b>Nameplate Data</b>		<b>460 V, 60 Hz: Low Speed Connection</b>	
Rated Output (HP)	1/.44	Full Load Torque	1.98 LB-FT
Volts	460	Start Configuration	direct on line
Full Load Amps	1.63/.93	Breakdown Torque	7.31 LB-FT
R.P.M.	1745/1165	Pull-up Torque	4.29 LB-FT
Hz	60 Phase	Locked-rotor Torque	4.81 LB-FT
NEMA Design Code	- KVA Code	Starting Current	5.15 A
Service Factor (S.F.)	1.15	No-load Current	0.76 A
NEMA Nom. Eff.	0 Power Factor	Line-line Res. @ 25°C	63.4 Ω
Rating - Duty	40C AMB-CONT	Temp. Rise @ Rated Load	32°C
S.F. Amps		Temp. Rise @ S.F. Load	37°C

**Load Characteristics 460 V, 60 Hz, 0.44 HP**

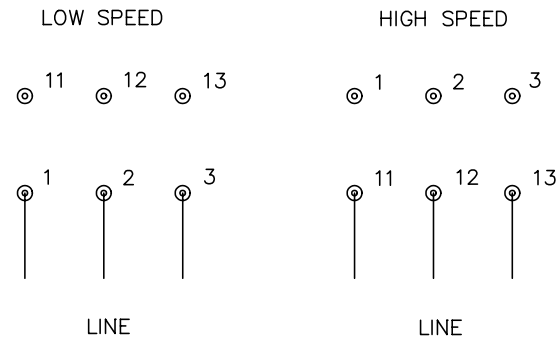
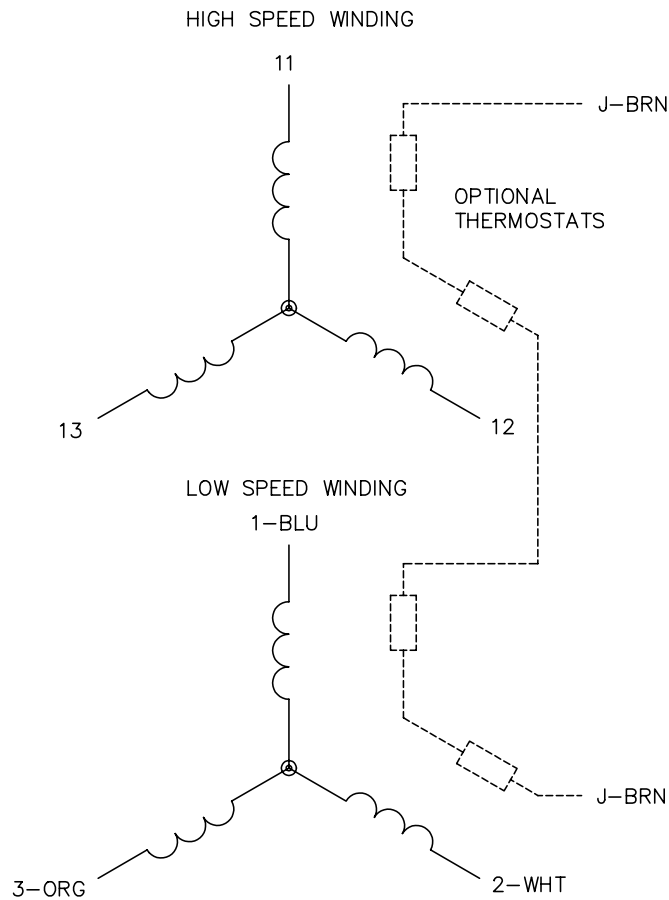
% of Rated Load	25	50	75	100	125	150	S.F.
Power Factor	30	43	54	64	71	78	68
Efficiency	47.6	61.6	67.9	70.4	71	70	70.8
Speed	1192	1184	1175	1166	1155	1139	1159
Line amperes	0.77	0.81	0.86	0.93	1.03	1.17	0.99

Performance Graph at 460V, 60Hz, 0.44HP Typical performance - Not guaranteed values





CD0013



NOTES:

1. INTERCHANGE ANY TWO LINE LEADS TO REVERSE ROTATION.
2. OPTIONAL THERMOSTATS ARE PROVIDED WHEN SPECIFIED.
3. ACTUAL NUMBER OF INTERNAL PARALLEL CIRCUITS MAY VARY.
4. LEAD COLORS ARE OPTIONAL. LEADS MUST ALWAYS BE NUMBERED AS SHOWN.

REV. DESC: REVISE TO SHOW OPTIONAL COLORS			
REV. LTR: D	BY: JLP	REVISED: 01/22/99 8:50	TDR: 0171435
Ω10003		FILE: AAA00005143	MDL: -
		MTL: -	

**BALDOR ELECTRIC Co.**

3PH, SV, 6 LEADS, 2-SPEED 2-WINDING

CD0013