

BALDOR® • RELIANCE 

Product Information Packet

M3234

1.5HP,1725RPM,3PH,60HZ,204,3617M,OPEN,F1

| Part Detail | | | | | | | |
|-------------|--------|-------------|------------|-------------|--------|---------------|----|
| Revision: | Y | Status: | INA/A | Change #: | | Proprietary: | No |
| Type: | AC | Elec. Spec: | 36WG0093 | CD Diagram: | CD0005 | Mfg Plant: | |
| Mech. Spec: | 36F079 | Layout: | 36LYF079 | Poles: | 04 | Created Date: | |
| Base: | RG | Eff. Date: | 10-20-2016 | Leads: | 9#16 | | |

| Specs | | | |
|---------------------------------|-------------------------|--------------------------------|-------------------|
| Catalog Number: | M3234 | Heater Indicator: | No Heater |
| Enclosure: | ODP | Insulation Class: | B |
| Frame: | 204 | Inverter Code: | Not Inverter |
| Frame Material: | Steel | KVA Code: | J |
| Motor Letter Type: | Three Phase | Lifting Lugs: | No Lifting Lugs |
| Output @ Frequency: | 1.500 HP @ 60 HZ | Locked Bearing Indicator: | No Locked Bearing |
| Synchronous Speed @ Frequency: | 1800 RPM @ 60 HZ | Motor Lead Quantity/Wire Size: | 9 @ 16 AWG |
| Voltage @ Frequency: | 230.0 V @ 60 HZ | Motor Lead Exit: | Ko Box |
| | 208.0 V @ 60 HZ | Motor Lead Termination: | Flying Leads |
| | 460.0 V @ 60 HZ | Motor Type: | 3617M |
| XP Division: | Not Applicable | Mounting Arrangement: | F1 |
| Agency Approvals: | CSA | Power Factor: | 77 |
| | UR | Product Family: | General Purpose |
| Auxillary Box: | No Auxillary Box | Pulley End Bearing Type: | Ball |
| Auxillary Box Lead Termination: | None | Pulley Face Code: | Standard |
| Base Indicator: | RG | Pulley Shaft Indicator: | Standard |
| Bearing Grease Type: | Polyrex EM (-20F +300F) | Rodent Screen: | None |
| Blower: | None | Shaft Extension Location: | Pulley End |

| | | | |
|---------------------------------------|---------------------------|------------------------------------|---------------------|
| Current @ Voltage: | 4.800 A @ 230.0 V | Shaft Ground Indicator: | No Shaft Grounding |
| | 5.200 A @ 208.0 V | Shaft Rotation: | Reversible |
| | 2.400 A @ 460.0 V | Shaft Slinger Indicator: | No Slinger |
| Design Code: | B | Speed Code: | Single Speed |
| Drip Cover: | No Drip Cover | Motor Standards: | NEMA |
| Duty Rating: | CONT | Starting Method: | Direct on line |
| Electrically Isolated Bearing: | Not Electrically Isolated | Thermal Device - Bearing: | None |
| Feedback Device: | NO FEEDBACK | Thermal Device - Winding: | None |
| Front Face Code: | Standard | Vibration Sensor Indicator: | No Vibration Sensor |
| Front Shaft Indicator: | None | Winding Thermal 1: | None |
| | | Winding Thermal 2: | None |

| Nameplate NP1256L | | | | | | | | | | |
|-------------------|--------------|--|--|------|-----|------|---|--|----------------|-----|
| CAT.NO. | | | | | | | | | | |
| SPEC. | 36F79-93 | | | | | | | | | |
| HP | 1.5 | | | | | | | | | |
| VOLTS | 208-230/460 | | | | | | | | | |
| AMP | 5.2-4.8/2.4 | | | | | | | | | |
| RPM | 1725 | | | | | | | | | |
| FRAME | 204 | | | | HZ | 60 | | | PH | 3 |
| SER.F. | 1.15 | | | CODE | J | DES | B | | CLASS | B |
| NEMA-NOM-EFF | 81.5 | | | PF | 77 | | | | | |
| RATING | 40C AMB-CONT | | | | | | | | | |
| CC | | | | | | | | | USABLE AT 208V | 5.2 |
| DE | 6206 | | | | ODE | 6205 | | | | |
| ENCL | OPEN | | | SN | | | | | | |
| | | | | | | | | | | |

| Parts List | | |
|-------------|--|----------|
| Part Number | Description | Quantity |
| SA035203 | SA 36F79-93 | 1.000 EA |
| RA031230 | RA 36F79-93 | 1.000 EA |
| 36CB3004 | 36 CB CASTING W/1.09 DIA LEAD HOLE @ 6:0 | 1.000 EA |
| 51XB1016A08 | 10-16X 1/2HXWSSLD SERTYB | 2.000 EA |
| 11XW1032G06 | 10-32 X .38, TAPTITE II, HEX WSHR SLTD U | 1.000 EA |
| HW3001B01 | BRASS CUP WASHER, FOR #10 SCREW | 1.000 EA |
| 36EP3204B00 | FR ENDPLATE, ASSEMBLY FOR ROUTING | 1.000 EA |
| HW4500A01 | 1641B(ALEMITE)400 UNIV, GREASE FITT | 1.000 EA |
| HW5100A05 | WVY WSHR F/205 & 304 BRGS | 1.000 EA |
| 36EP3205D00 | PU ENDPLATE, ASSEMBLY FOR ROUTING | 1.000 EA |
| HW4500A01 | 1641B(ALEMITE)400 UNIV, GREASE FITT | 1.000 EA |
| XY2520A12 | 1/4-20 HEX NUT, DIRECTIONAL SERRATIONS | 4.000 EA |
| 36CB4516 | 750LIPPED CB LID - GALVANNEAL | 1.000 EA |
| 51XW0832A07 | 8-32 X .44, TAPTITE II, HEX WSHR SLTD SE | 4.000 EA |
| HW2501D13 | KEY, 3/16 SQ X 1.375 | 1.000 EA |
| 85XU0407S04 | 4X1/4 U DRIVE PIN STAINLESS | 2.000 EA |
| MJ1000A02 | GREASE, POLYREX EM EXXON | 0.050 LB |
| MG1000G27 | MED CHARCOAL METALLIC GREY 400-0096 | 0.022 GA |
| HA3101A25 | THRUBOLT 1/4-20 X 11.000 OHIO ROD | 4.000 EA |
| LC0005E01 | CONN.DIA./WARNING LABEL (LC0005/LB1119N) | 1.000 EA |
| NP1256L | ALUM UL CSA CC INDUSTRIAL MOTOR A60 | 1.000 EA |
| 36PA1000 | PKG GRP, PRINT PK1016A06 | 1.000 EA |
| MN416A01 | TAG-INSTAL-MAINT no wire (2200bx) 4/22 | 1.000 EA |
| LB1417 | LABEL CARTON 6X4 PERFORATED BLANK ROLLS | 1.000 EA |

| Accessories | | |
|--------------------|--------------------|-------------------|
| Part Number | Description | Multiplier |
| 36-3301 | C FACE KIT | A8 |
| 36EP1405A09SP | D-FLANGE KIT | A8 |

AC Induction Motor Performance Data

Record # 20843

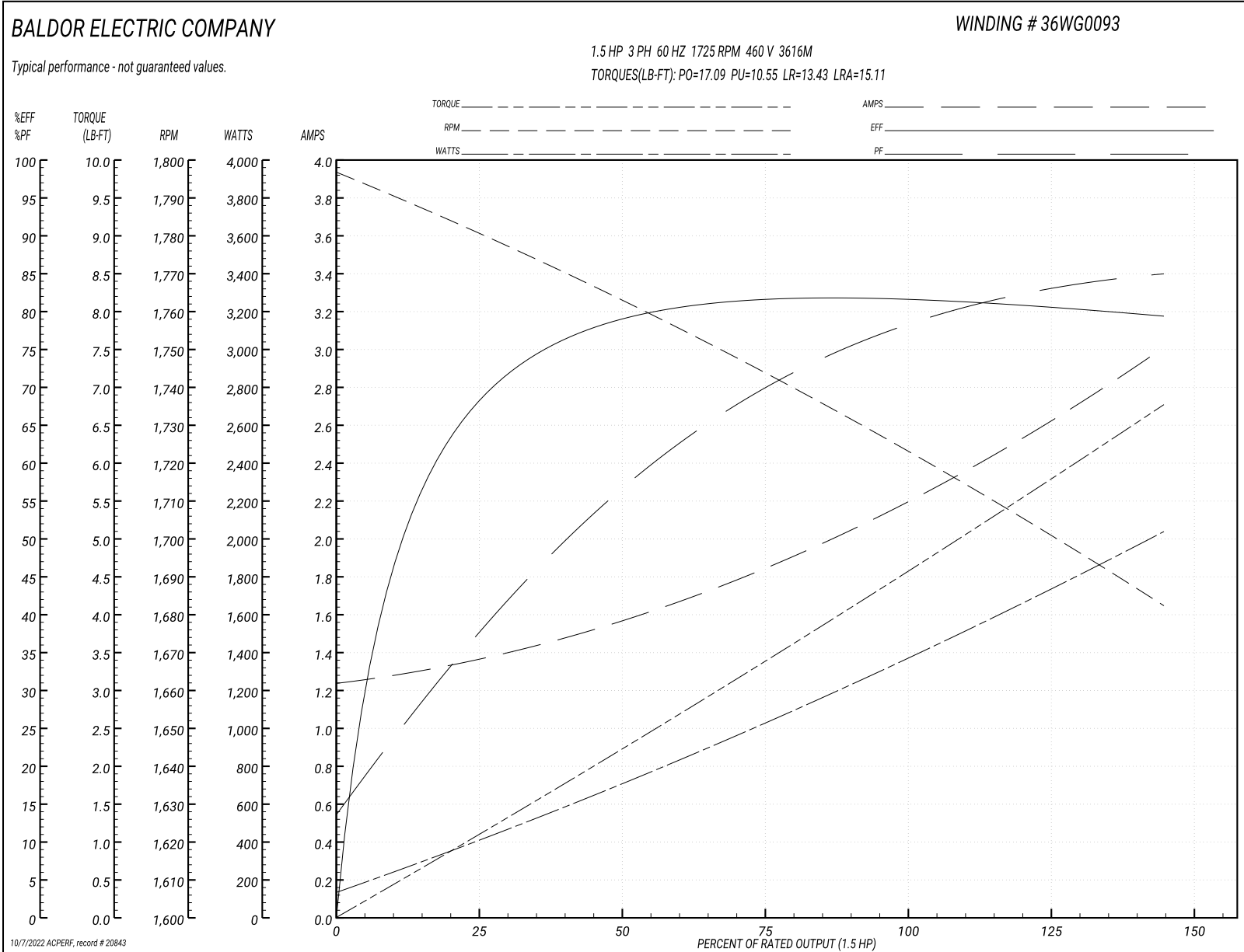
Typical performance - not guaranteed values

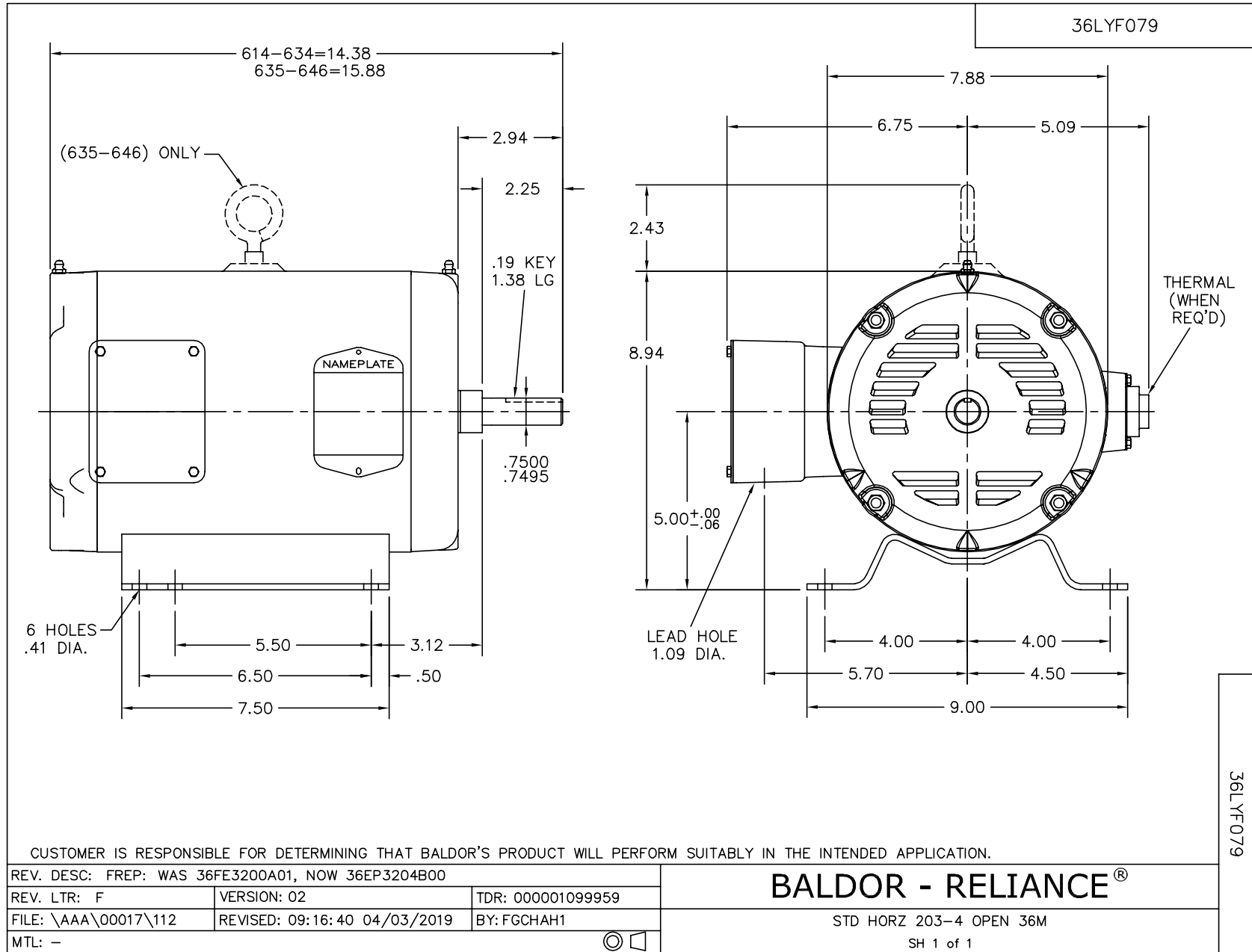
| Winding: 36WG0093-R001 | | Type: 3616M | Enclosure: TEFC |
|------------------------|-------------------|--|-------------------------|
| Nameplate Data | | 460 V, 60 Hz: High Voltage Connection | |
| Rated Output (HP) | 1.5 | Full Load Torque | 4.51 LB-FT |
| Volts | 208-230/460 | Start Configuration | direct on line |
| Full Load Amps | 5.2-4.8/2.4 | Breakdown Torque | 17.09 LB-FT |
| R.P.M. | 1725 | Pull-up Torque | 10.55 LB-FT |
| Hz | 60 Phase | Locked-rotor Torque | 13.43 LB-FT |
| NEMA Design Code | B KVA Code | Starting Current | 15.11 A |
| Service Factor (S.F.) | 1.15 | No-load Current | 1.25 A |
| NEMA Nom. Eff. | 81.5 Power Factor | Line-line Res. @ 25°C | 12.8 Ω |
| Rating - Duty | 40C AMB-CONT | Temp. Rise @ Rated Load | |
| | | Locked-rotor Power Factor | 62.7 |
| | | Rotor inertia | 0.15 LB-FT ² |

Load Characteristics 460 V, 60 Hz, 1.5 HP

| % of Rated Load | 25 | 50 | 75 | 100 | 125 | 150 | S.F. |
|-----------------|------|------|------|------|------|------|------|
| Power Factor | 37 | 57 | 70 | 78 | 82 | 85 | 80 |
| Efficiency | 70.4 | 79 | 81.2 | 81.5 | 80.9 | 79.4 | 81.1 |
| Speed | 1779 | 1762 | 1744 | 1725 | 1705 | 1681 | 1713 |
| Line amperes | 1.35 | 1.56 | 1.86 | 2.17 | 2.59 | 3 | 2.42 |

Performance Graph at 460V, 60Hz, 1.5HP Typical performance - Not guaranteed values





CD0005



LOW VOLTAGE
(2Y)



LINE

HIGH VOLTAGE
(1Y)



LINE

NOTES:

1. INTERCHANGE ANY TWO LINE LEADS TO REVERSE ROTATION.
2. OPTIONAL THERMOSTATS ARE PROVIDED WHEN SPECIFIED.
3. ACTUAL NUMBER OF INTERNAL PARALLEL CIRCUITS MAY BE A MULTIPLE OF THOSE SHOWN ABOVE.
4. LEAD COLORS ARE OPTIONAL. LEADS MUST ALWAYS BE NUMBERED AS SHOWN.

REV. DESC: REVISE TO SHOW OPTIONAL COLORS

REV. LTR: E BY: JLP

REVISED: 01/19/99 10:15

TDR: 0171435

9000D

FILE: AAA00005140

MDL: -

MTL: -

BALDOR ELECTRIC Co.

3PH, DV, 9 LEADS

CD0005