



---

# Customer information packet

## M3550T-57

1.5HP, 2850RPM, 3PH, 50HZ, 143T, 3520M, TEFC, F

Class - None

Division - Not Applicable

## Specifications

Enclosure	TEFC
Frame	143T
Frame Material	Steel
Frequency	50.00 Hz
Motor Letter Type	Three Phase
Output @ Frequency	1.500 HP @ 50 HZ
Phase	3
Synchronous Speed @ Frequency	3000 RPM @ 50 HZ
Voltage @ Frequency	230.0 V @ 50 HZ 400.0 V @ 50 HZ
XP Class and Group	None
XP Division	Not Applicable
Agency Approvals	CSA CE UR
Ambient Temperature	40 °C
Auxillary Box	No Auxillary Box
Auxillary Box Lead Termination	None
Base Indicator	Rigid
Bearing Grease Type	Polyrex EM (-20F +300F)
Blower	None
Current @ Voltage	2.400 A @ 400.0 V 4.200 A @ 230.0 V
Design Code	B
Drip Cover	No Drip Cover
Duty Rating	CONT
Efficiency @ 100% Load	80.0 %
Electrically Isolated Bearing	Not Electrically Isolated
Feedback Device	NO FEEDBACK
Front Face Code	Standard
Front Shaft Indicator	None
Heater Indicator	No Heater

## Part detail

Revision	J
Type	AC
Mech. spec.	35TT638
Base	
Status	INA/A
Elec. spec.	35WGS893
Layout	35LYTT638
Eff. date	10-28-2016
CD Diagram	CD0022
Poles	02
Leads	6#18
Proprietary	False
Created date	09-08-2011

High Voltage Full Load Amps	2.4 a
Insulation Class	B
Inverter Code	Not Inverter
KVA Code	K
Lifting Lugs	No Lifting Lugs
Locked Bearing Indicator	No Locked Bearing
Motor Lead Exit	Ko Box
Motor Lead Quantity/Wire Size	6 @ 18 AWG
Motor Lead Termination	Flying Leads
Motor Standards	NEMA
Motor Type	3520M
Mounting Arrangement	F1
Number of Poles	2
Overall Length	12.29 IN
Power Factor	88
Product Family	General Purpose
Pulley End Bearing Type	Ball
Pulley Face Code	Standard
Pulley Shaft Indicator	Standard
Rodent Screen	None
RoHS Status	ROHS COMPLIANT
Service Factor	1.15
Shaft Diameter	0.875 IN
Shaft Extension Location	Pulley End
Shaft Ground Indicator	No Shaft Grounding
Shaft Rotation	Reversible
Shaft Slinger Indicator	No Slinger
Speed	2850 rpm
Speed Code	Single Speed
Starting Method	Direct on line
Thermal Device - Bearing	None
Thermal Device - Winding	None
Vibration Sensor Indicator	No Vibration Sensor
Winding Thermal 1	None

**Winding Thermal 2**

**None**

---

**Nameplate**

**NP2717L**

<b>CAT NO</b>	M3550T-57						
<b>SPEC.</b>	35TT638S893H1						
<b>HP</b>	1.5				<b>PH</b>	3	
<b>VOLTS</b>	230/400						
<b>AMP</b>	4.2/2.4						
<b>RPM</b>	2850						
<b>FRAME</b>	143T		<b>HZ</b>	50		<b>I.P.</b>	54
<b>SER.F.</b>	1.15	<b>CODE</b>	K	<b>DES</b>	B	<b>CL</b>	B
<b>NEMA-NOM-EFF</b>	80					<b>% (100%)</b>	
<b>PF</b>	88	<b>USABLE AT 208V</b>					
<b>RATING</b>	40C AMB-CONT				<b>CC</b>		
<b>DE BRG</b>	6205		<b>ODE</b>	6203			
<b>ENCL</b>	TEFC	<b>SN</b>					
<b>BLANK</b>	IE2 50HZ-80(75%)77(50%)						

## Parts list

Part number	Description	Quantity
SA230430	SA 35TT638S893H1	1.000 ea
RA217457	RA 35TT638S893H1	1.000 ea
NS2512A01	INSULATOR, CONDUIT BOX X	1.000 ea
35CB3009	35 CB W/1.09 DIA. LEAD HOLE @ 6:	1.000 ea
36GS1000SP	GASKET-CONDUIT BOX, .06 THICK #SV-330 LE	1.000 ea
51XB1016A07	10-16 X 7/16 HXWSSLD SERTYB	2.000 ea
11XW1032G06	10-32 X .38, TAPTITE II, HEX WSHR SLTD U	1.000 ea
35EP3122A00	FREP TEFC 203 BRG W/GRSR (RAISED FH PADS	1.000 ea
HW4500A01	1641B(ALEMITE)400 UNIV, GREASE FITT	1.000 ea
HW5100A03	WAVY WASHER (W1543-017)	1.000 ea
35EP3123F00	PUEP-ENCLOSED-205 BRG-W/GREASER	1.000 ea
HW4500A01	1641B(ALEMITE)400 UNIV, GREASE FITT	1.000 ea
XY1032A02	10-32 HEX NUT DIRECTIONAL SERRATION	4.000 ea
35FH4005A84SP	IEC FH W/GRSR, NO DIMPLES PRIMED	1.000 ea
51XW1032A06	10-32 X .38, TAPTITE II, HEX WSHR SLTD S	3.000 ea
35CB4521	35 LIPPED CB LID (GALV & PHOSPH)	1.000 ea
35GS1030	35 GS FOR CB LID - LEXIDE	1.000 ea
51XW0832A07	8-32 X .44, TAPTITE II, HEX WSHR SLTD SE	4.000 ea
HW2501D13	KEY, 3/16 SQ X 1.375	1.000 ea
HA7000A01	KEY RETAINER 7/8" DIA SHAFT	1.000 ea
10XF0440S02	04-40 X 1/8 TYPE F HEX HD STAINLESS STIC	2.000 ea
MJ1000A02	GREASE, POLYREX EM EXXON	0.050 lb
35FN3002A05SP	EXFN, PLASTIC, 6.376 OD, .638 ID	1.000 ea
51XB1214A16	12-14X1.00 HXWSSLD SERTYB	1.000 ea
MG1000G27	MED CHARCOAL METALLIC GREY 400-0096	0.017 ga
HA4067A01	PUSH IN DRAIN FITTING (BLACK)	1.000 ea
HA4067A01	PUSH IN DRAIN FITTING (BLACK)	1.000 ea
HA3100A15	THRUBOLT 10-32 X 8.375	4.000 ea
HA4067A01	PUSH IN DRAIN FITTING (BLACK)	2.000 ea
MN416A01	TAG-INSTAL-MAINT no wire (2100bx)4/22	1.000 ea
LB1119N	WARNING LABEL	1.000 ea

LC0034	CONNECTION LABEL	1.000 ea
NP2717L	ALUM NEMA IE2 UL CSA CE CC	1.000 ea
34PA1005	PKG GRP, PRINT PK1008A06	1.000 ea

**AC Induction Motor Performance Data**

Record # 35170

Typical performance - not guaranteed values

Winding: 35WGS893-R014		Type: 3520M	Enclosure: XPFC		
<b>Nameplate Data</b>			<b>400 V, 50 Hz: High Voltage Connection</b>		
Rated Output (HP)	1.5	Full Load Torque	2.73 LB-FT		
Volts	230/400	Start Configuration	direct on line		
Full Load Amps	4.2/2.4	Breakdown Torque	10.8 LB-FT		
R.P.M.	2850	Pull-up Torque	7.67 LB-FT		
Hz	50 Phase	3	Locked-rotor Torque	9.63 LB-FT	
NEMA Design Code	B	KVA Code	K	Starting Current	18.2 A
Service Factor (S.F.)	1.15	No-load Current	1.13 A		
NEMA Nom. Eff.	80	Power Factor	88	Line-line Res. @ 25°C	9.27 Ω
Rating - Duty	40C AMB-CONT		Temp. Rise @ Rated Load	67°C	
S.F. Amps			Temp. Rise @ S.F. Load	78°C	
			Locked-rotor Power Factor	66	
			Rotor inertia	0.0553 LB-FT <sup>2</sup>	

**Load Characteristics 400 V, 50 Hz, 1.5 HP**

% of Rated Load	25	50	75	100	125	150	S.F.
Power Factor	50	70	82	87	90	92	89
Efficiency	67.6	78	80.7	81.2	80.5	78.5	80.8
Speed	2969	2937	2903	2867	2826	2780	2842
Line amperes	1.24	1.48	1.82	2.27	2.75	3.3	2.56



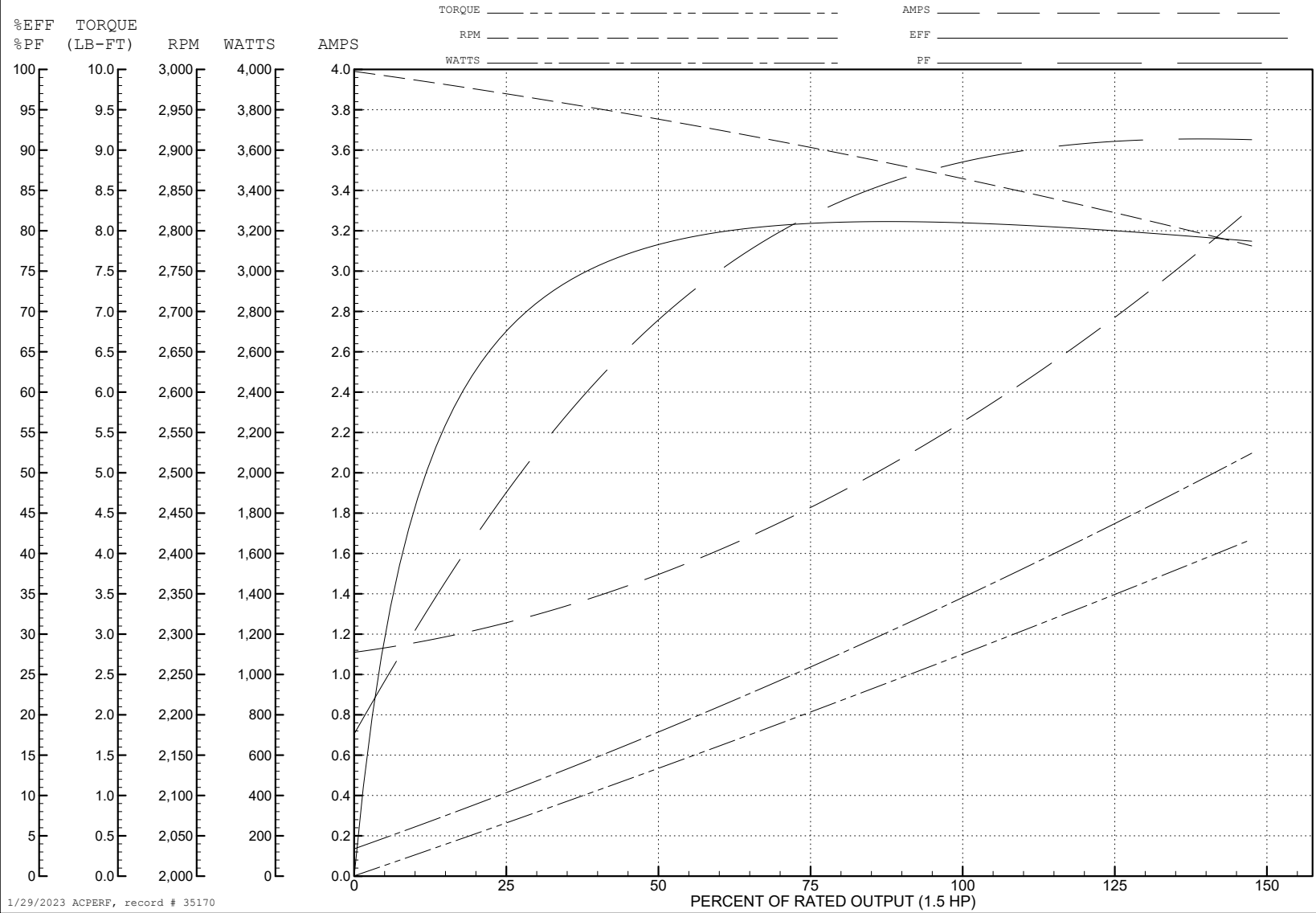
ABB Motors and Mechanical Inc.

WINDING # 35WGS893

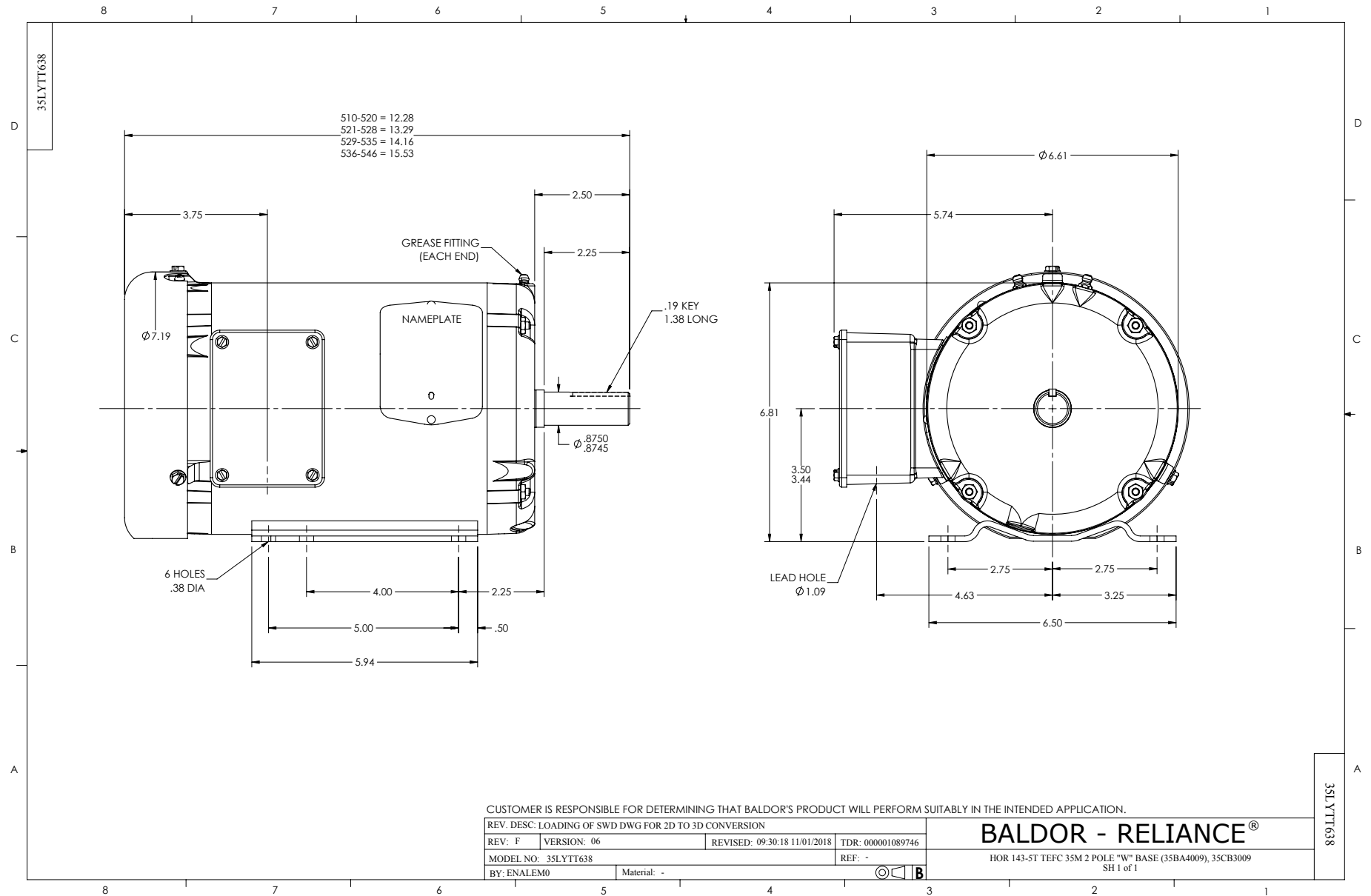
Typical performance - not guaranteed values.

1.5 HP 3 PH 50 HZ 2850 RPM 400 V 3520M

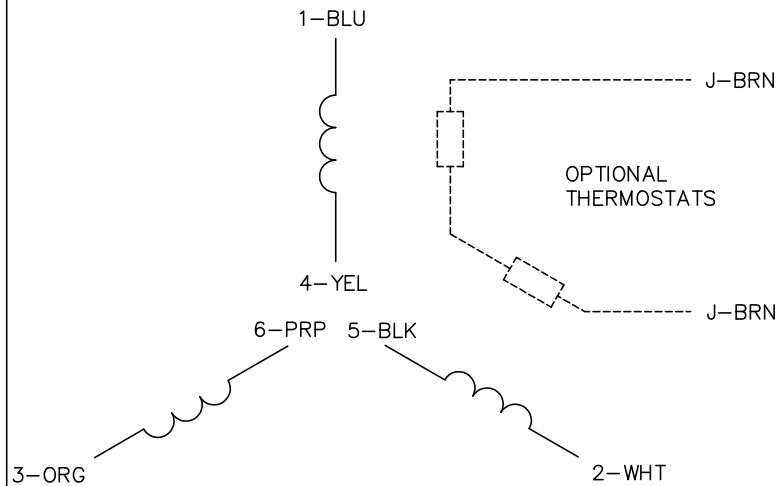
TORQUES (LB-FT): PO=10.8 PU=7.67 LR=9.63 LRA=18.2



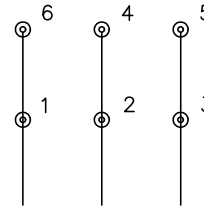
1/29/2023 ACPERF, record # 35170



CD0022

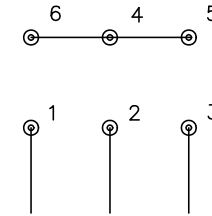


LOW VOLTAGE  
(1D)



LINE

HIGH VOLTAGE  
(1Y)



LINE

NOTES:

1. INTERCHANGE ANY TWO LINE LEADS TO REVERSE ROTATION.
2. OPTIONAL THERMOSTATS ARE PROVIDED WHEN SPECIFIED.
3. ACTUAL NUMBER OF INTERNAL PARALLEL CIRCUITS MAY BE A MULTIPLE OF THOSE SHOWN ABOVE.
4. LEAD COLORS ARE OPTIONAL. LEADS MUST ALWAYS BE NUMBERED AS SHOWN.

REV. DESC: REVISE TO SHOW OPTIONAL COLORS			
REV. LTR: F	BY: JLP	REVISED: 01/21/99 3:54	TDR: 0171435
CD0022		FILE: AAA00005144	MDL: -
		MTL: -	

**BALDOR ELECTRIC Co.**

3PH, DV, 6 LEADS, DELTA/WYE CONNECTION

CD0022