

BALDOR® • RELIANCE 

Product Information Packet

M3602

.75HP,845RPM,3PH,60HZ,184,3530M,TEFC,F1

| Part Detail | | | | | | | |
|-------------|--------|-------------|------------|-------------|--------|---------------|------------|
| Revision: | K | Status: | PRD/A | Change #: | | Proprietary: | No |
| Type: | AC | Elec. Spec: | 35WGM976 | CD Diagram: | CD0005 | Mfg Plant: | |
| Mech. Spec: | 35L108 | Layout: | 35LYL108 | Poles: | 08 | Created Date: | 12-10-2010 |
| Base: | RG | Eff. Date: | 03-20-2018 | Leads: | 9#18 | | |

| Specs | | | |
|---------------------------------|-------------------------|--------------------------------|-------------------|
| Catalog Number: | M3602 | Insulation Class: | F |
| Enclosure: | TEFC | Inverter Code: | Not Inverter |
| Frame: | 184 | KVA Code: | J |
| Frame Material: | Steel | Lifting Lugs: | No Lifting Lugs |
| Output @ Frequency: | .750 HP @ 60 HZ | Locked Bearing Indicator: | No Locked Bearing |
| Synchronous Speed @ Frequency: | 900 RPM @ 60 HZ | Motor Lead Quantity/Wire Size: | 9 @ 18 AWG |
| Voltage @ Frequency: | 208.0 V @ 60 HZ | Motor Lead Exit: | Ko Box |
| | 230.0 V @ 60 HZ | Motor Lead Termination: | Flying Leads |
| | 460.0 V @ 60 HZ | Motor Type: | 3530M |
| XP Class and Group: | None | Mounting Arrangement: | F1 |
| XP Division: | Not Applicable | Power Factor: | 61 |
| Agency Approvals: | UR | Product Family: | General Purpose |
| | CSA | Pulley End Bearing Type: | Ball |
| Auxillary Box: | No Auxillary Box | Pulley Face Code: | Standard |
| Auxillary Box Lead Termination: | None | Pulley Shaft Indicator: | Standard |
| Base Indicator: | Rigid | Rodent Screen: | None |
| Bearing Grease Type: | Polyrex EM (-20F +300F) | RoHS Status: | ROHS COMPLIANT |
| Blower: | None | Shaft Extension Location: | Pulley End |

| | | | |
|---------------------------------------|---------------------------|------------------------------------|---------------------|
| Current @ Voltage: | 1.600 A @ 460.0 V | Shaft Ground Indicator: | No Shaft Grounding |
| | 3.100 A @ 208.0 V | Shaft Rotation: | Reversible |
| | 3.200 A @ 230.0 V | Shaft Slinger Indicator: | No Slinger |
| Design Code: | B | Speed Code: | Single Speed |
| Drip Cover: | No Drip Cover | Motor Standards: | NEMA |
| Duty Rating: | CONT | Starting Method: | Direct on line |
| Electrically Isolated Bearing: | Not Electrically Isolated | Thermal Device - Bearing: | None |
| Feedback Device: | NO FEEDBACK | Thermal Device - Winding: | None |
| Front Face Code: | Standard | Vibration Sensor Indicator: | No Vibration Sensor |
| Front Shaft Indicator: | None | Winding Thermal 1: | None |
| Heater Indicator: | No Heater | Winding Thermal 2: | None |

| Nameplate NP1256L | | | | | | | | | | | | |
|-------------------|--------------|--|--|--|--|------|------|--|-----|----|----------------|---|
| CAT.NO. | M3602 | | | | | | | | | | | |
| SPEC. | 35L108M976G1 | | | | | | | | | | | |
| HP | .75 | | | | | | | | | | | |
| VOLTS | 208-230/460 | | | | | | | | | | | |
| AMP | 3.1-3.2/1.6 | | | | | | | | | | | |
| RPM | 835 | | | | | | | | | | | |
| FRAME | 184 | | | | | HZ | 60 | | | PH | 3 | |
| SER.F. | 1.15 | | | | | CODE | J | | DES | B | CLASS | F |
| NEMA-NOM-EFF | 72 | | | | | PF | 61 | | | | | |
| RATING | 40C AMB-CONT | | | | | | | | | | | |
| CC | | | | | | | | | | | USABLE AT 208V | |
| DE | 6206 | | | | | ODE | 6203 | | | | | |
| ENCL | TEFC | | | | | SN | | | | | | |

| Parts List | | |
|---------------|--|----------|
| Part Number | Description | Quantity |
| SA212981 | SA 35L108M976G1 | 1.000 EA |
| RA200209 | RA 35L108M976G1 | 1.000 EA |
| 35FN3002A05SP | EXFN, PLASTIC, 6.376 OD, .638 ID | 1.000 EA |
| NS2512A01 | INSULATOR, CONDUIT BOX X | 1.000 EA |
| 35CB3009 | 35 CB W/1.09 DIA. LEAD HOLE @ 6: | 1.000 EA |
| 36GS1000SP | GASKET-CONDUIT BOX, .06 THICK #SV-330 LE | 1.000 EA |
| 51XB1016A07 | 10-16 X 7/16 HXWSSLD SERTYB | 2.000 EA |
| 11XW1032G06 | 10-32 X .38, TAPTITE II, HEX WSHR SLTD U | 1.000 EA |
| HW3001B01 | BRASS CUP WASHER, FOR #10 SCREW | 1.000 EA |
| 35EP3122A00 | MASTER ODE,203 BRG,.683SH,#26 DRN,GRSR,F | 1.000 EA |
| HW4500A01 | 1641B(ALEMITE)400 UNIV, GREASE FITT | 1.000 EA |
| HW5100A03 | WAVY WASHER (W1543-017) | 1.000 EA |
| 35EP3113A01 | PU ENDPLATE, MACH W/206 BRG | 1.000 EA |
| HW4500A01 | 1641B(ALEMITE)400 UNIV, GREASE FITT | 1.000 EA |
| XY1032A02 | 10-32 HEX NUT DIRECTIONAL SERRATION | 4.000 EA |
| 51XB1214A16 | 12-14X1.00 HXWSSLD SERTYB | 1.000 EA |
| 35FH4005A84SP | IEC FH W/GRSR, NO DIMPLES PRIMED | 1.000 EA |
| 51XW1032A06 | 10-32 X .38, TAPTITE II, HEX WSHR SLTD S | 3.000 EA |
| 35CB4521GX | CONDUIT BOX LID KIT **ORDER INDIV PARTS | 1.000 EA |
| 51XW0832A07 | 8-32 X .44, TAPTITE II, HEX WSHR SLTD SE | 4.000 EA |
| HW2501D13 | KEY, 3/16 SQ X 1.375 | 1.000 EA |
| HA7000A01 | KEY RETAINER 7/8" DIA SHAFT | 1.000 EA |
| 85XU0407S04 | 4X1/4 U DRIVE PIN STAINLESS | 2.000 EA |
| MJ1000A02 | GREASE, MOBIL POLYREX EM - 124047 | 0.050 LB |

| Parts List (continued) | | |
|-------------------------------|--|-----------------|
| Part Number | Description | Quantity |
| MG1000G27 | MED CHARCOAL METALLIC GREY 400-0096 | 0.017 GA |
| HA3100A24 | THRUBOLT 10-32 X 10.625 | 4.000 EA |
| LC0005E01 | CONN.DIA./WARNING LABEL (LC0005/LB1119N) | 1.000 EA |
| NP1256L | ALUM UL CSA CC INDUSTRIAL MOTOR A60 | 1.000 EA |
| 36PA1000 | PKG GRP, PRINT PK1016A06 | 1.000 EA |
| MN416A01 | TAG-INSTAL-MAINT no wire (1200/bx) 1/21 | 1.000 EA |
| FE-0000001 | ZRTG FE ASSEMBLY | 1.000 EA |

AC Induction Motor Performance Data

Record # 33691

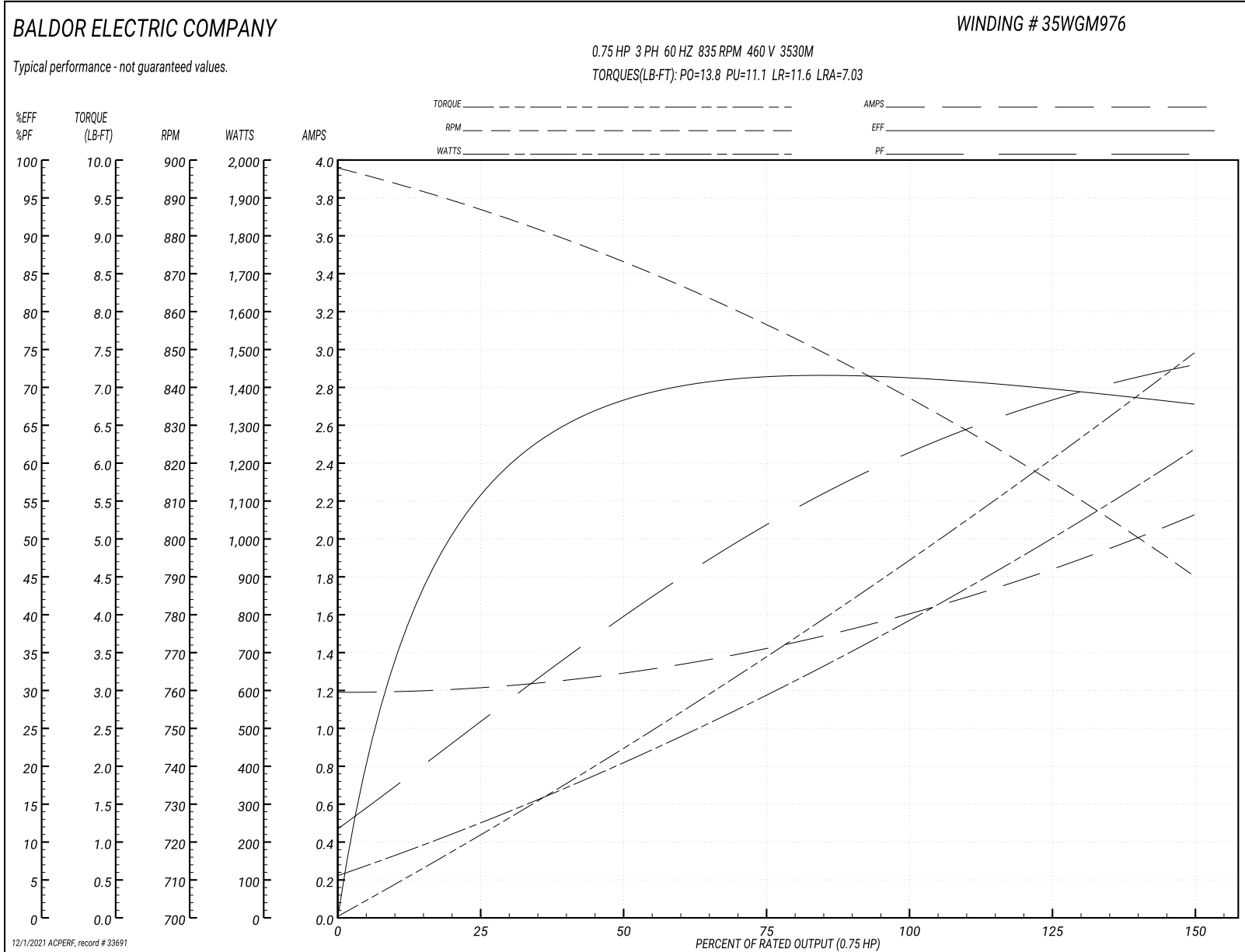
Typical performance - not guaranteed values

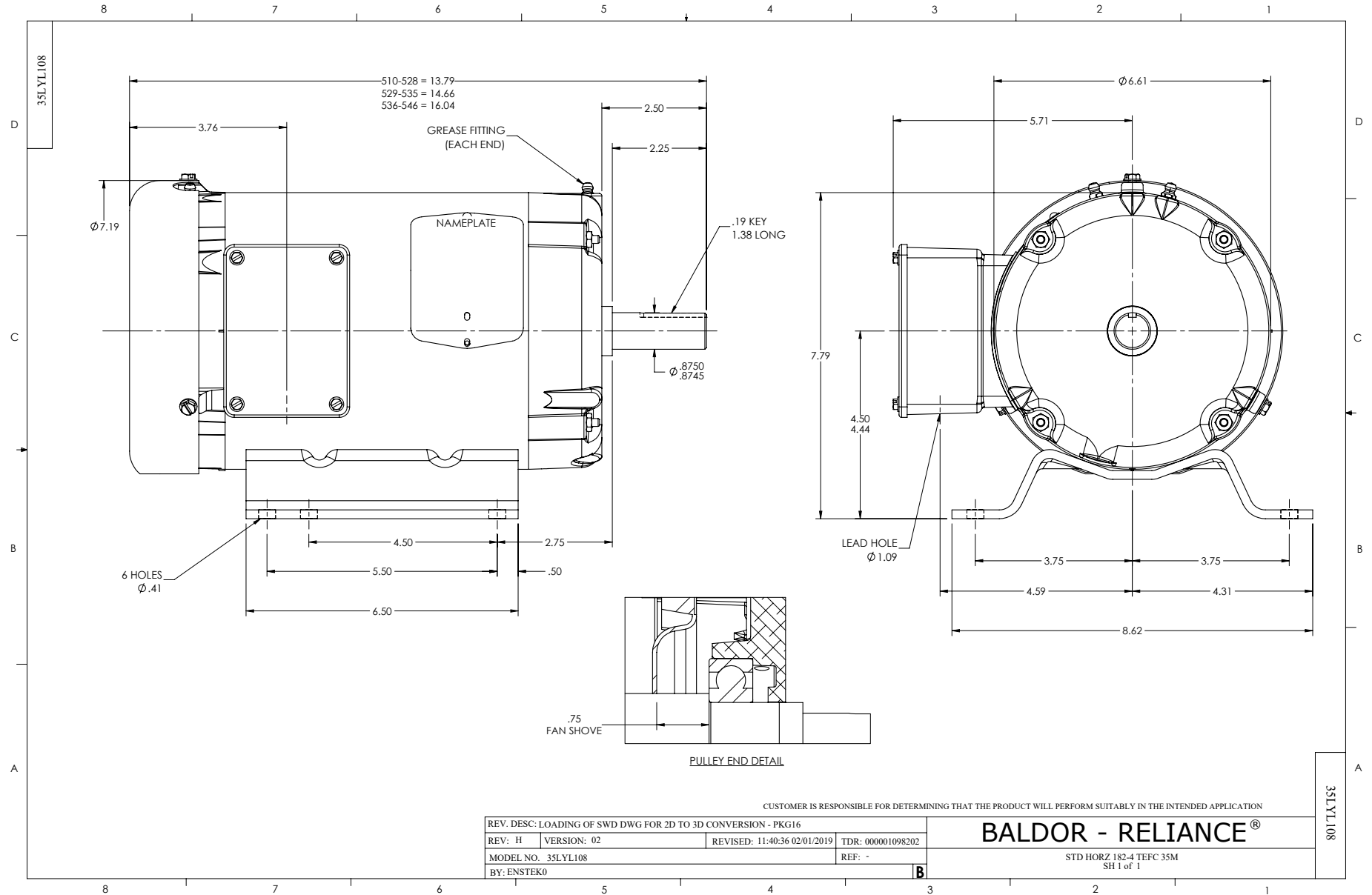
| Winding: 35WGM976-R001 | | | Type: 3530M | Enclosure: TEFC | |
|------------------------|-----------------|----|--|--------------------------|--|
| Nameplate Data | | | 460 V, 60 Hz: High Voltage Connection | | |
| Rated Output (HP) | .75 | | Full Load Torque | 4.7 LB-FT | |
| Volts | 208-230/460 | | Start Configuration | direct on line | |
| Full Load Amps | 3.1-3.2/1.6 | | Breakdown Torque | 13.8 LB-FT | |
| R.P.M. | 835 | | Pull-up Torque | 11.1 LB-FT | |
| Hz | 60 Phase | 3 | Locked-rotor Torque | 11.6 LB-FT | |
| NEMA Design Code | B KVA Code | J | Starting Current | 7.03 A | |
| Service Factor (S.F.) | 1.15 | | No-load Current | 1.19 A | |
| NEMA Nom. Eff. | 72 Power Factor | 61 | Line-line Res. @ 25°C | 25 Ω | |
| Rating - Duty | 40C AMB-CONT | | Temp. Rise @ Rated Load | 71°C | |
| S.F. Amps | | | Temp. Rise @ S.F. Load | 82°C | |
| | | | Locked-rotor Power Factor | 62.3 | |
| | | | Rotor inertia | 0.178 LB-FT ² | |

Load Characteristics 460 V, 60 Hz, 0.75 HP

| % of Rated Load | 25 | 50 | 75 | 100 | 125 | 150 | S.F. |
|-----------------|------|-----|------|------|------|------|------|
| Power Factor | 26 | 40 | 52 | 61 | 68 | 73 | 65 |
| Efficiency | 55 | 67 | 71.1 | 71.9 | 70.5 | 67.4 | 71.7 |
| Speed | 886 | 872 | 857 | 838 | 817 | 789 | 826 |
| Line amperes | 1.21 | 1.3 | 1.42 | 1.6 | 1.83 | 2.13 | 1.74 |

Performance Graph at 460V, 60Hz, 0.75HP Typical performance - Not guaranteed values

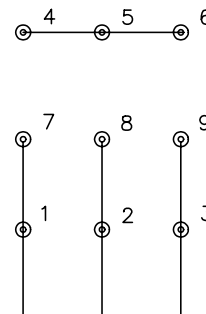




CD0005

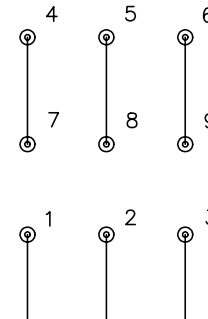


LOW VOLTAGE
(2Y)



LINE

HIGH VOLTAGE
(1Y)



LINE

NOTES:

1. INTERCHANGE ANY TWO LINE LEADS TO REVERSE ROTATION.
2. OPTIONAL THERMOSTATS ARE PROVIDED WHEN SPECIFIED.
3. ACTUAL NUMBER OF INTERNAL PARALLEL CIRCUITS MAY BE A MULTIPLE OF THOSE SHOWN ABOVE.
4. LEAD COLORS ARE OPTIONAL. LEADS MUST ALWAYS BE NUMBERED AS SHOWN.

| | | | |
|---|---------|-------------------------|--------------|
| REV. DESC: REVISE TO SHOW OPTIONAL COLORS | | | |
| REV. LTR: E | BY: JLP | REVISED: 01/19/99 10:15 | TDR: 0171435 |
| 90000 | | FILE: AAA00005140 | MDL: - |
| | | MTL: - | |

BALDOR ELECTRIC Co.

3PH, DV, 9 LEADS

CD0005