

BALDOR • RELIANCE

Customer information packet

UCL345

3-4.5HP, 3450RPM, 1PH, 60HZ, 182Z, 3634L, OPEN

Class - None

Division - Not Applicable

Copyright © All product information within this document is subject to ABB Motors and Mechanical Inc. copyright © protection, unless otherwise noted.

1/29/2023 9:54:12 AM

Specifications

Enclosure	OPEN
Frame	182Z
Frame Material	Steel
Frequency	60.00 Hz
Motor Letter Type	Cap Start, Induction Run
Output @ Frequency	4.500 HP @ 60 HZ 3.000 HP @ 60 HZ
Phase	1
Synchronous Speed @ Frequency	3600 RPM @ 60 HZ
Voltage @ Frequency	230.0 V @ 60 HZ
XP Class and Group	None
XP Division	Not Applicable
Agency Approvals	UR CSA
Ambient Temperature	40 °C
Auxillary Box	No Auxillary Box
Auxillary Box Lead Termination	None
Base Indicator	Rigid
Bearing Grease Type	Polyrex EM (-20F +300F)
Blower	None
Current @ Voltage	22.000 A @ 230.0 V
Design Code	L
Drip Cover	No Drip Cover
Duty Rating	CONT
Efficiency @ 100% Load	74.0 %
Electrically Isolated Bearing	Not Electrically Isolated
Feedback Device	NO FEEDBACK
Front Face Code	Standard
Front Shaft Indicator	None
Heater Indicator	No Heater
High Voltage Full Load Amps	22.0 a
Insulation Class	F

Part detail

Revision	AT
Type	AC
Mech. spec.	36F549
Base	
Status	PRD/A
Elec. spec.	36WG2510
Layout	36LYF549
Eff. date	02-15-2022
CD Diagram	CD0017A01
Poles	02
Leads	2#12 A PH,2#16 B PH 30" LG Y
Proprietary	False
Created date	01-01-0001

Inverter Code	Not Inverter
KVA Code	F
Lifting Lugs	No Lifting Lugs
Locked Bearing Indicator	Locked Bearing
Motor Lead Exit	Pipe Or Pipe Adaptor
Motor Lead Quantity/Wire Size	2 @ 12 AWG, A PH
Motor Lead Termination	Flying Leads
Motor Standards	NEMA
Motor Type	3634L
Mounting Arrangement	F1
Number of Poles	2
Overall Length	14.88 IN
Power Factor	86
Product Family	General Purpose
Pulley End Bearing Type	Ball
Pulley Face Code	Standard
Pulley Shaft Indicator	Tapped & Key
Rodent Screen	Included
Service Factor	1.00
Shaft Diameter	0.875 IN
Shaft Extension Location	Pulley End
Shaft Ground Indicator	No Shaft Grounding
Shaft Rotation	Reversible
Shaft Slinger Indicator	No Slinger
Speed	3450 rpm
Speed Code	Single Speed
Starting Method	Direct on line
Thermal Device - Bearing	None
Thermal Device - Winding	Normally Closed Thermostat
Vibration Sensor Indicator	No Vibration Sensor
Winding Thermal 1	None
Winding Thermal 2	None

Nameplate

NP1279L							
CAT.NO.	UCL345						
SPEC.	36F549-2510						
HP	3-4.5 AIR OVER						
VOLTS	230						
AMP	22						
RPM	3450						
FRAME	182Z	HZ	60	PH	1		
SER.F.	1.00	CODE	F	DES	L	CL	F
NEMA-NOM-EFF	74	PF	86				
RATING	40C AMB-CONT						
CC	USABLE AT 208V						
DE	6206	ODE	6205				
ENCL	OPEN	SN					

NP1263L

CAT.NO.	UCL345						
SPEC.	36F549-2510						
HP	3-4.5 AIR OVER						
VOLTS	230						
AMP	22						
RPM	3450						
FRAME	182Z		HZ	60		PH	1
SER.F.	1.00	CODE	F	DES	L	CL	F
NEMA-NOM-EFF	74	PF	86				
RATING	40C AMB-CONT						
CC							USABLE AT 208V
DE	6206	ODE	6205				
ENCL	OPEN	SN					

Parts list

Part number	Description	Quantity
SA035080	SA 36F549-2510	1.000 ea
RA031107	RA 36F549-2510	1.000 ea
EC1216C06SP	ELEC CAP, 216-259 MFD, 250V, 2.06D X 4.	1.000 ea
HA6021A01SP	ADAPTOR, MACH	1.000 ea
51XB1016A07	10-16 X 7/16 HXWSSLD SERTYB	2.000 ea
11XW1032G06	10-32 X .38, TAPTITE II, HEX WSHR SLTD U	1.000 ea
HW3001B01	BRASS CUP WASHER, FOR #10 SCREW	1.000 ea
36EP3204C01	C00 W/GND	1.000 ea
HA1103A08	RODENT SCREEN, 36 FRAME, OPEN, FRONT END	1.000 ea
51XW1032A06	10-32 X .38, TAPTITE II, HEX WSHR SLTD S	4.000 ea
HW1000A10	#10 FLAT WASHER (SAE)	4.000 ea
HW4500A19	1/4-28X1/4 SLOTTED PLUG F/S	2.000 ea
13XF0832A08	8-32 X.50 PAN HD,SLTD, TYPE F SCREW, ZIN	2.000 ea
SP1008A01	BAFFLE, MODEL 36 & 37	1.000 ea
51XB1016A05	10-16X5/16HX WA SL SR TYB (F/S)	2.000 ea
HW5100A05	WVY WSHR F/205 & 304 BRGS	1.000 ea
36EP3205E00	MASTER DE,206 BRG,1.438SH,GRSR,GRSR,LCK	1.000 ea
HA1103A10	RODENT SCREEN, 36 FRAME, OPEN, PULLEY EN	1.000 ea
51XW1032A06	10-32 X .38, TAPTITE II, HEX WSHR SLTD S	4.000 ea
HW1000A10	#10 FLAT WASHER (SAE)	4.000 ea
HW4500A19	1/4-28X1/4 SLOTTED PLUG F/S	2.000 ea
10XN2520A20	1/4-20X 1 1/4 HEX HD X	2.000 ea
HW1001A25	LOCKWASHER 1/4, ZINC PLT .493 OD, .255 I	2.000 ea
XY2520A12	1/4-20 HEX NUT, DIRECTIONAL SERRATIONS	4.000 ea
HW2501D13	KEY, 3/16 SQ X 1.375	1.000 ea
HA7000A01	KEY RETAINER 7/8" DIA SHAFT	1.000 ea
85XU0407S04	4X1/4 U DRIVE PIN STAINLESS	2.000 ea
LB1001	LABEL, GREASE-EXXON POLYREX EM	1.000 ea
WD1000A15	3-520132-2 AMP FLAG (4M/RL NON-CANC/NON-	2.000 ea
MJ1000A02	GREASE, POLYREX EM EXXON	0.050 lb
LD5000A45	LEAD ASSY, ML1400DF10 W/#10 RING 36"	1.000 ea

SP5172A43	37 TYPE L TORQ STAT SWITCH LEAD ASSEMBLY	1.000 ea
35CB4802A02SP	CAPACITOR COVER, STAMPED X	1.000 ea
HA3101A25	THRUBOLT 1/4-20 X 11.000 OHIO ROD	4.000 ea
MG1025C02	WILKOFASG, 787.105, TAN	0.022 ga
LB1119N	WARNING LABEL	1.000 ea
LC0017	CONN LABEL-1 PHASE-SINGLE VOLT-REV ROTNO	1.000 ea
NP1279L	ALUM FARM DUTY UL CSA CC	1.000 ea
NP1263L	AUX, GP, ALUM, CC, LASER ETCHED	1.000 ea
36PA1000	PKG GRP, PRINT PK1016A06	1.000 ea
MN416A01	TAG-INSTAL-MAINT no wire (2100bx)4/22	1.000 ea
PE-0000004	ZRTG PE ASSEMBLY	1.000 ea

AC Induction Motor Performance Data

Record # 10531

Typical performance - not guaranteed values

Winding: 36WG2510-R001			Type: 3634L			Enclosure: OPAO		
Nameplate Data						230 V, 60 Hz: Single Voltage Motor		
Rated Output (HP)	3-4.5 AIR OVER		Full Load Torque	6.8 LB-FT				
Volts	230		Start Configuration	direct on line				
Full Load Amps	22		Breakdown Torque	18 LB-FT				
R.P.M.	3450		Pull-up Torque	16 LB-FT				
Hz	60 Phase	1	Locked-rotor Torque	14 LB-FT				
NEMA Design Code	L KVA Code	F	Starting Current	115 A				
Service Factor (S.F.)	1		No-load Current	9 A				
NEMA Nom. Eff.	74 Power Factor	86	Line-line Res. @ 25°C	0.393 Ω A Ph 1.72 Ω B Ph				
Rating - Duty	40C AMB-CONT		Temp. Rise @ Rated Load					

Load Characteristics 230 V, 60 Hz, 4.5 HP

% of Rated Load	25	50	75	100	125	150
Power Factor	57	74	83	87	89	90
Efficiency	61.1	73.4	77.5	78.5	77.9	76.1
Speed	3565	3536	3504	3469	3428	3380
Line amperes	10.5	13.4	17.1	21.4	26.3	32.1

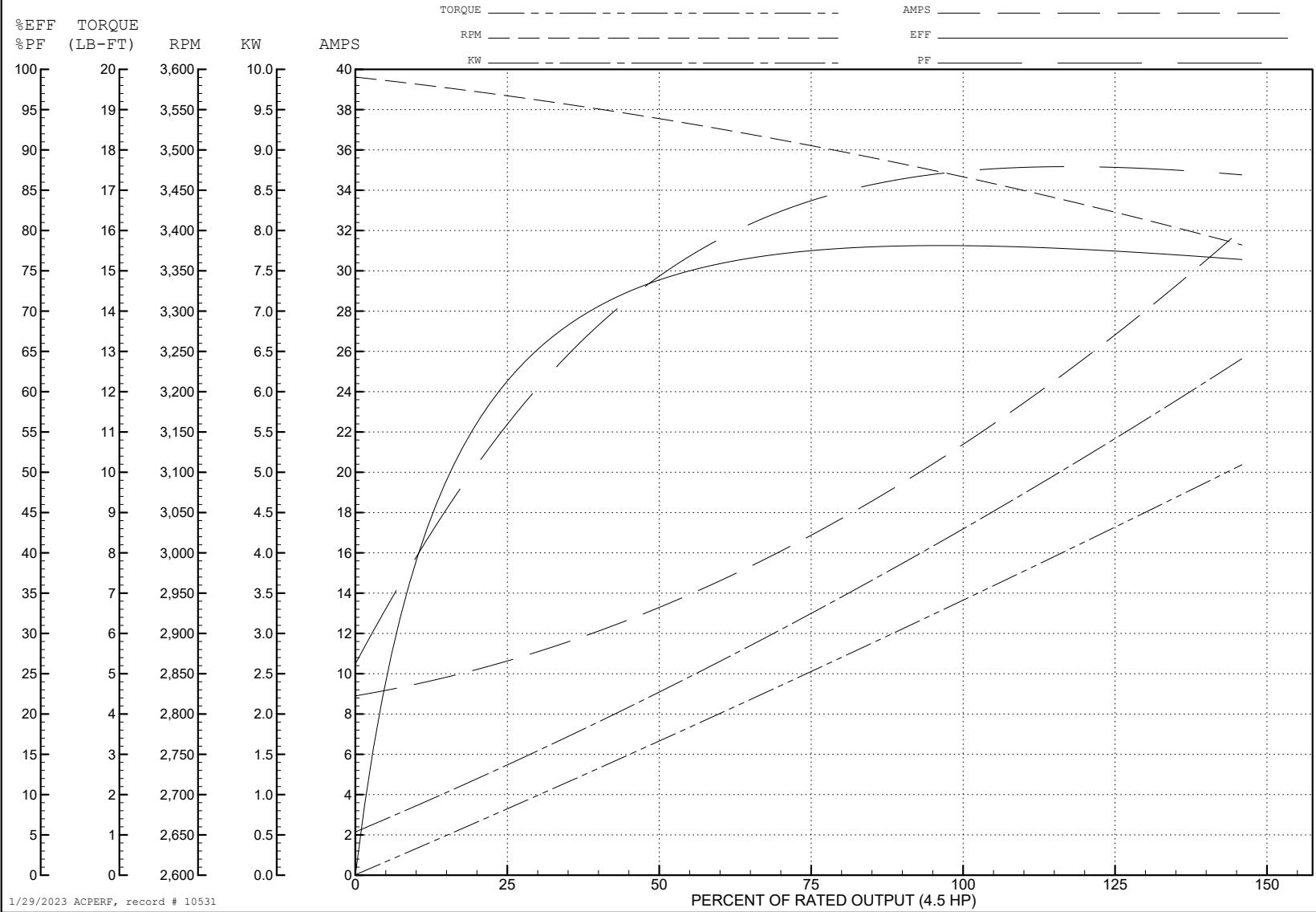
ABB Motors and Mechanical Inc.

WINDING # 36WG2510

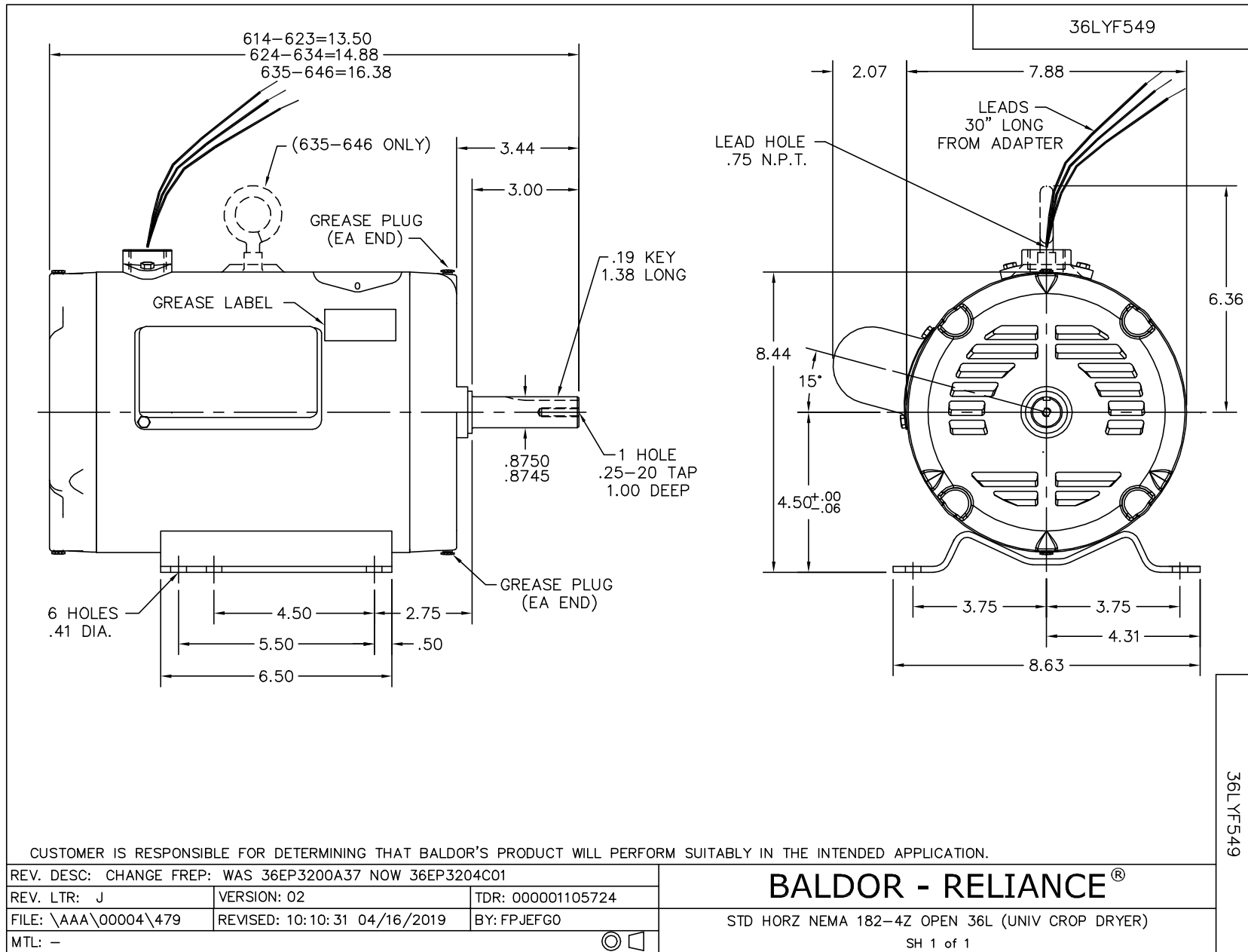
4.5 HP 1 PH 60 HZ 3450 RPM 230 V 3634L

Typical performance - not guaranteed values.

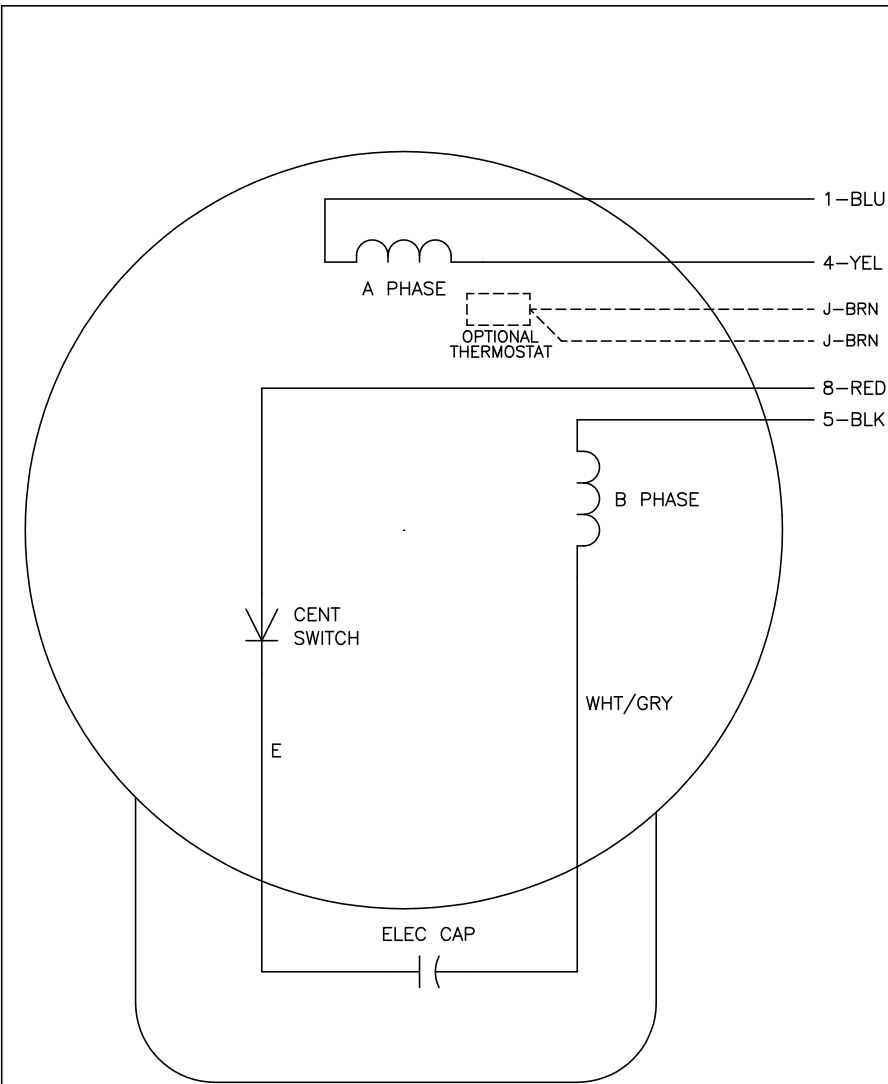
TORQUES (LB-FT): PO=18 PU=16 LR=14 LRA=115



1/29/2023 ACPERF, record # 10531



CD0017A01



	LINE A	LINE B
STD	1,8	4,5
OPP	1,5	4,8

NOTES:

1. STANDARD ROTATION IS CCW FACING END OPPOSITE SHAFT EXTENSION.
2. OPTIONAL THERMOSTAT IS PROVIDED WHEN SPECIFIED.
3. MULTIPLE CAPACITORS ARE CONNECTED IN PARALLEL UNLESS OTHERWISE SPECIFIED.
4. LEAD COLORS ARE OPTIONAL. LEADS MUST ALWAYS BE NUMBERED AS SHOWN.

REV. DESC: REVISE TO SHOW OPTIONAL COLORS			
REV. LTR: B	BY: JLP	REVISED: 04/08/99 1:18	TDR: 0178636
10VZ1000		FILE: AAA00007513	MDL: -
		MTL: -	

BALDOR ELECTRIC Co.

TYPE L, SV, REV, 4 LEADS

CD0017A01