

BALDOR® • RELIANCE 

Product Information Packet

UCM1014

10-15HP,3450RPM,3PH,60HZ,215Z,3726M,OPEN

Part Detail							
Revision:	AQ	Status:	PRD/A	Change #:		Proprietary:	No
Type:	AC	Elec. Spec:	37WGZ092	CD Diagram:	CD0005	Mfg Plant:	
Mech. Spec:	37E766	Layout:	37LYE766	Poles:	02	Created Date:	
Base:	RG	Eff. Date:	01-23-2020	Leads:	9#14 32" FROM ADAPT		Y

Specs			
Catalog Number:	UCM1014	Heater Indicator:	No Heater
Enclosure:	OPEN	Insulation Class:	F
Frame:	215Z	Inverter Code:	Not Inverter
Frame Material:	Steel	KVA Code:	H
Motor Letter Type:	Three Phase	Lifting Lugs:	Standard Lifting Lugs
Output @ Frequency:	10.000 HP @ 60 HZ	Locked Bearing Indicator:	Locked Bearing
	15.000 HP @ 60 HZ	Motor Lead Quantity/Wire Size:	9 @ 14 AWG
Synchronous Speed @ Frequency:	3600 RPM @ 60 HZ	Motor Lead Exit:	Pipe Or Pipe Adaptor
Voltage @ Frequency:	460.0 V @ 60 HZ	Motor Lead Termination:	Flying Leads
	230.0 V @ 60 HZ	Motor Type:	3726M
	208.0 V @ 60 HZ	Mounting Arrangement:	F1
XP Class and Group:	None	Power Factor:	89
XP Division:	Not Applicable	Product Family:	General Purpose
Agency Approvals:	CSA	Product Type:	FARM DUTY
	UR	Pulley End Bearing Type:	Sealed Bearing
Auxillary Box:	No Auxillary Box	Pulley Face Code:	Standard
Auxillary Box Lead Termination:	None	Pulley Shaft Indicator:	Tapped & Key
Base Indicator:	Rigid	Rodent Screen:	Included

Bearing Grease Type:	Polyrex EM (-20F +300F)	Shaft Extension Location:	Pulley End
Blower:	None	Shaft Ground Indicator:	No Shaft Grounding
Current @ Voltage:	38.000 A @ 208.0 V	Shaft Rotation:	Reversible
	36.000 A @ 230.0 V	Shaft Slinger Indicator:	No Slinger
	18.000 A @ 460.0 V	Speed Code:	Single Speed
Design Code:	B	Motor Standards:	NEMA
Drip Cover:	No Drip Cover	Starting Method:	Direct on line
Duty Rating:	CONT	Thermal Device - Bearing:	None
Electrically Isolated Bearing:	Not Electrically Isolated	Thermal Device - Winding:	Normally Closed Thermostat
Feedback Device:	NO FEEDBACK	Vibration Sensor Indicator:	No Vibration Sensor
Front Face Code:	Standard	Winding Thermal 1:	None
Front Shaft Indicator:	None	Winding Thermal 2:	None

Nameplate NP1279L											
CAT.NO.	UCM1014										
SPEC.	37E766Z92										
HP	10-15 AIR OVER										
VOLTS	208-230/460										
AMP	38-36/18										
RPM	3450										
FRAME	215Z				HZ	60			PH	3	
SER.F.	1.00				CODE	H		DES	B	CL	F
NEMA-NOM-EFF	85.5				PF	89					
RATING	40C AMB-CONT										
CC								USABLE AT 208V	38		
DE	6307				ODE	6206					
ENCL	OPEN				SN						

Nameplate NP1263L	
CAT.NO.	UCM1014
SPEC.	37E766Z92
HP	10-15 AIR OVER
VOLTS	208-230/460
AMP	38-36/18
RPM	3450
FRAME	215Z
	HZ 60
	PH 3
SER.F.	1.00
	CODE H
	DES B
	CL F
NEMA-NOM-EFF	85.5
	PF 89
RATING	40C AMB-CONT
CC	USABLE AT 208V 38
DE	6307
	ODE 6206
ENCL	OPEN
	SN

Parts List		
Part Number	Description	Quantity
SA031067	SA 37E766Z92	1.000 EA
RA027106	RA 37E766Z92	1.000 EA
HA6011A01	ADAPTOR, MACH	1.000 EA
51XF2520A10	SCREW, HEX SER SLT HD, ZN, 1/4-20 X .62	2.000 EA
11XW1032G06	10-32 X .38, TAPTITE II, HEX WSHR SLTD U	1.000 EA
HW3001B01	BRASS CUP WASHER, FOR #10 SCREW	1.000 EA
37EP3203C00	MASTER,ODE,206 BRG,2 GREASERS	1.000 EA
HW4500A19	1/4-28X1/4 SLOTTED PLUG F/S	2.000 EA
HA1104A01	RODENT SCREEN 37 FRAME 206 BRG FRONT END	1.000 EA
51XW1032A06	10-32 X .38, TAPTITE II, HEX WSHR SLTD S	4.000 EA
10XN2520A28	1/4-20X 1 3/4 HEX HD	4.000 EA
HW5100A06	W2420-025 WVY WSHR (WB)	1.000 EA
37EP3204C00	MASTER,DE,307 BRG,2 GREASERS,LOCKED BEAR	1.000 EA
HW4500A19	1/4-28X1/4 SLOTTED PLUG F/S	2.000 EA
HA1104A05	RODENT SCREEN 37 FRAME 207 BRG PULLEY EN	1.000 EA
51XW1032A06	10-32 X .38, TAPTITE II, HEX WSHR SLTD S	2.000 EA
HW1001A25	LOCKWASHER 1/4, ZINC PLT .493 OD, .255 I	4.000 EA
XY3118A12	5/16-18 HEX NUT DIRECTIONAL SERRATION	4.000 EA
HW2501E18	KEY, 1/4 SQ X 2.000	1.000 EA
HA7000A02	KEY RETAINER RING, 1 1/8 DIA, 1 3/8 DIA	1.000 EA
LB1115N	LABEL,LIFTING DEVICE (ON ROLLS)	1.000 EA
85XU0407S04	4X1/4 U DRIVE PIN STAINLESS	2.000 EA
HW3200A01	3/8-16X3/4 I-BLT WELDED F/S	1.000 EA
HW1000A10	#10 FLAT WASHER (SAE)	4.000 EA

Parts List (continued)		
Part Number	Description	Quantity
MJ1000A02	GREASE, POLYREX EM EXXON	0.050 LB
HW1000A10	#10 FLAT WASHER (SAE)	2.000 EA
LD5000A45	LEAD ASSY, ML1400DF10 W/#10 RING 36"	1.000 EA
HA3104A14	THRUBOLT- 5/16-18 X12.125(OHIO)	4.000 EA
MG1025C02	WILKOFAST SG, 787.105, TAN	0.028 GA
LB1119N	WARNING LABEL	1.000 EA
LB1001	LABEL, GREASE-EXXON POLYREX EM	1.000 EA
LC0145B01	CONNECTION LABEL	1.000 EA
NP1279L	ALUM FARM DUTY UL CSA CC	1.000 EA
NP1263L	AUX, GP, ALUM, CC, LASER ETCHED	1.000 EA
36PA1001	PKG GRP, PRINT PK1017A06	1.000 EA
MN416A01	TAG-INSTAL-MAINT no wire (2200bx) 4/22	1.000 EA
PE-0000004	ZRTG PE ASSEMBLY	1.000 EA
FE-0000004	ZRTG FE ASSEMBLY	1.000 EA

Accessories		
Part Number	Description	Multiplier
37-1404	C FACE KIT	A8

AC Induction Motor Performance Data

Record # 20933

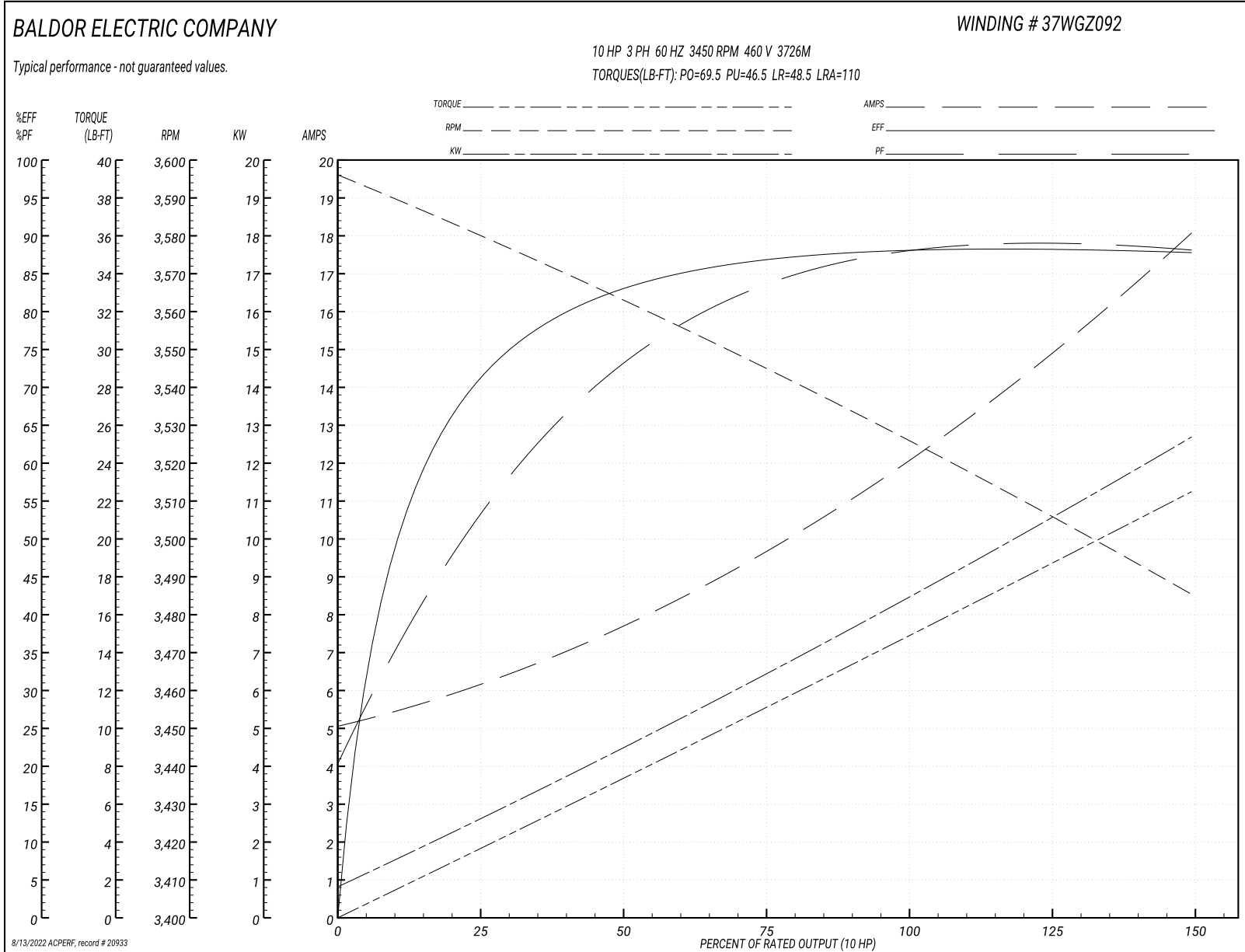
Typical performance - not guaranteed values

Winding: 37WGZ092-R002		Type: 3726M		Enclosure: OPAO	
Nameplate Data			460 V, 60 Hz: High Voltage Connection		
Rated Output (HP)	10-15 AIR OVER		Full Load Torque	15 LB-FT	
Volts	208-230/460		Start Configuration	direct on line	
Full Load Amps	38-36/18		Breakdown Torque	69.5 LB-FT	
R.P.M.	3450		Pull-up Torque	46.5 LB-FT	
Hz	60 Phase	3	Locked-rotor Torque	48.5 LB-FT	
NEMA Design Code	B KVA Code	H	Starting Current	110 A	
Service Factor (S.F.)	1		No-load Current	5.1 A	
NEMA Nom. Eff.	85.5 Power Factor	89	Line-line Res. @ 25°C	1.18 Ω	
Rating - Duty	40C AMB-CONT		Temp. Rise @ Rated Load		

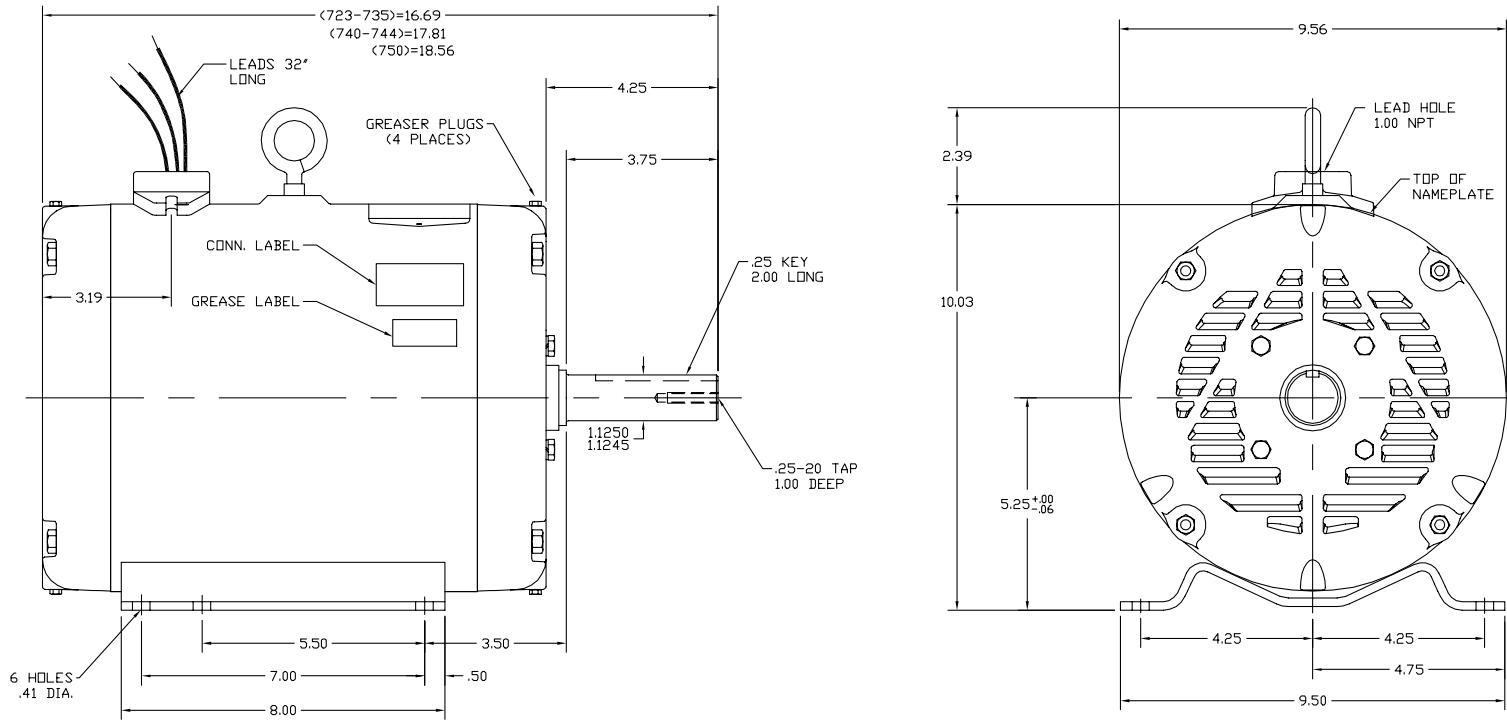
Load Characteristics 460 V, 60 Hz, 10 HP

% of Rated Load	25	50	75	100	125	150
Power Factor	57	75	84	88	87	90
Efficiency	67	84.8	86.8	89	87.7	87.8
Speed	3580	3566	3542	3524	3506	3486
Line amperes	6.3	7.5	9.7	12.1	15.4	17.8

Performance Graph at 460V, 60Hz, 10.0HP Typical performance - Not guaranteed values



37LYE766



CUSTOMER IS RESPONSIBLE FOR DETERMINING THAT MOTOR PERFORMANCE IS SUITABLE IN THE APPLICATION.

REV. DESC: ADD DIM. FROM FREP TO CENTER OF LEAD HOLE	VERSION: 01	TDR: 000000443387
REV. LTR: M	REvised: 10:30:55 09/13/2007	BY: ENMATRO
FILE: \AAA\00007\633		
MTL: -		

UNIVERSAL CROP DRYER MOTOR

BALDOR • DODGE • RELIANCE

SPL HOR 213-5Z -OPEN- 37M NO KO BOX W/PIPE ADAPTER & T'STAT

37LYE766

CD0005

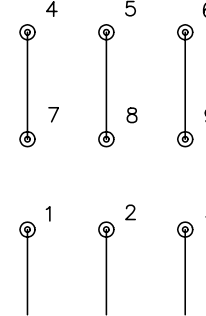


LOW VOLTAGE
(2Y)



LINE

HIGH VOLTAGE
(1Y)



LINE

NOTES:

1. INTERCHANGE ANY TWO LINE LEADS TO REVERSE ROTATION.
2. OPTIONAL THERMOSTATS ARE PROVIDED WHEN SPECIFIED.
3. ACTUAL NUMBER OF INTERNAL PARALLEL CIRCUITS MAY BE A MULTIPLE OF THOSE SHOWN ABOVE.
4. LEAD COLORS ARE OPTIONAL. LEADS MUST ALWAYS BE NUMBERED AS SHOWN.

REV. DESC: REVISE TO SHOW OPTIONAL COLORS

REV. LTR: E BY: JLP

REVISED: 01/19/99 10:15

TDR: 0171435

9000D

FILE: AAA00005140

MDL: -

MTL: -

BALDOR ELECTRIC Co.

3PH, DV, 9 LEADS

CD0005