

BALDOR® • RELIANCE 

Product Information Packet

VBNM3542-D

.75/.55 KWHP, 1765 1/MIN IP44 IC410 19 KG

Part Detail							
Revision:	B	Status:	PRD/A	Change #:		Proprietary:	No
Type:	AC	Elec. Spec:	35WGG069	CD Diagram:	CD0005	Mfg Plant:	
Mech. Spec:	35X058	Layout:	35LYX058	Poles:	04	Created Date:	01-10-2022
Base:	N	Eff. Date:	07-14-2022	Leads:	9#18		

Specs			
Catalog Number:	VBNM3542-D	Front Shaft Indicator:	None
Enclosure:	TENV	Heater Indicator:	No Heater
Frame:	56C	Insulation Class:	F
Frame Material:	Steel	Inverter Code:	Not Inverter
Motor Letter Type:	Three Phase	KVA Code:	M
Output @ Frequency:	.750 HP @ 60 HZ	Lifting Lugs:	No Lifting Lugs
Synchronous Speed @ Frequency:	1800 RPM @ 60 HZ	Locked Bearing Indicator:	Locked Bearing
Voltage @ Frequency:	230.0 V @ 60 HZ	Motor Lead Quantity/Wire Size:	9 @ 18 AWG
	208.0 V @ 60 HZ	Motor Lead Exit:	Ko Box
	460.0 V @ 60 HZ	Motor Lead Termination:	Flying Leads
XP Class and Group:	None	Motor Type:	3514M
XP Division:	Not Applicable	Mounting Arrangement:	F3
Agency Approvals:	CE	Power Factor:	66
	CSA	Product Family:	General Purpose
	UR	Product Type:	D-SERIES BRAKE MOTORS
	WEEE	Pulley End Bearing Type:	Ball
Auxillary Box:	No Auxillary Box	Pulley Face Code:	C-Face
Auxillary Box Lead Termination:	None	Pulley Shaft Indicator:	Standard

Base Indicator:	No Mounting	Rodent Screen:	None
Bearing Grease Type:	Polyrex EM (-20F +300F)	Shaft Extension Location:	Pulley End
Blower:	None	Shaft Ground Indicator:	No Shaft Grounding
Current @ Voltage:	3.000 A @ 208.0 V	Shaft Rotation:	Reversible
	2.800 A @ 230.0 V	Shaft Slinger Indicator:	No Slinger
	1.400 A @ 460.0 V	Speed Code:	Single Speed
Design Code:	B	Motor Standards:	NEMA
Drip Cover:	No Drip Cover	Starting Method:	Direct on line
Duty Rating:	CONT	Thermal Device - Bearing:	None
Electrically Isolated Bearing:	Not Electrically Isolated	Thermal Device - Winding:	None
Feedback Device:	NO FEEDBACK	Vibration Sensor Indicator:	No Vibration Sensor
Front Face Code:	Brake Mounting	Winding Thermal 1:	None
		Winding Thermal 2:	None

Nameplate NP1372L											
CAT.NO.	VBNM3542-D										
SPEC.	35X058G069G1										
HP	.75/.55 KW										
VOLTS	208-230/460										
AMP	2.36-2.28/1.14										
RPM	1765 1/MIN IP44 IC410 19 KG										
FRAME	56C					HZ	60		PH	3	
SER.F.	1.15					CODE	K	DES	B	CL	F
NEMA-NOM-EFF	82.5					PF	74				
RATING	40C AMB-S1 CONT										
CC								USABLE AT 208V	2.4		
DE	6205					ODE	6203				
ENCL	TENV					SN					
	IE2-83.3(75%)81(50%)										

Parts List		
Part Number	Description	Quantity
SA402599	SA 35X058G069G1	1.000 EA
RA393876	RA 35X058G069G1	1.000 EA
NS2512A01	INSULATOR, CONDUIT BOX X	1.000 EA
35CB4007	KOBX,W/PRIMER (WAS REL# 79097-49-C)	1.000 EA
35GS3009	GASKET, KOBX 35CB4006 (411881-15A)	1.000 EA
WD4101A13	STEEL CAPLUG,BP-1 1/8, PLUG D3561S	2.000 EA
51XB1016A05	10-16X5/16HX WA SL SR TYB (F/S)	2.000 EA
11XW1032G06	10-32 X .38, TAPTITE II, HEX WSHR SLTD U	1.000 EA
HW3001B02	BRASS CUP WASHER W/GROUND SYMBOL TAB,	1.000 EA
35EP3900T25	FR EP FACE MNT ENCL FOR BRAKE	1.000 EA
HW5100A03	WAVY WASHER (W1543-017)	1.000 EA
35EP3307F00	MASTER DE,205 BRG,.998SH,#26 DRN	1.000 EA
51XN1032A20	10-32 X 1 1/4 HX WS SL SR	2.000 EA
10XN3816K64	3/8-16X4 HX HD CAP SCREW, GRADE 5	4.000 EA
HW1001A38	LOCKWASHER 3/8, ZINC PLT .688 OD, .382 I	4.000 EA
BR2006B01	DBSC SPLINED HUB 5/8 BOR	1.000 EA
35CB4519	CB LID W/BLACK PRIMER	1.000 EA
35GS3020	NEOPRENE GASKET, KOBX LID (602018-31)	1.000 EA
51XW0832A07	8-32 X .44, TAPTITE II, HEX WSHR SLTD SE	4.000 EA
WD4006A01	WIRE JOINT,T&B RB-4 OR RB-44	1.000 EA
HW2501D13	KEY, 3/16 SQ X 1.375	1.000 EA
HA7000A04	KEY RETAINER 0.625 DIA SHAFTS	1.000 EA
85XU0407S04	4X1/4 U DRIVE PIN STAINLESS	2.000 EA
LB1419	CONNECTION LABEL	1.000 EA

Parts List (continued)		
Part Number	Description	Quantity
MJ1000A02	GREASE, POLYREX EM EXXON	0.050 LB
MG1025N19	MUNSELL 8.5BG 3.57/2.0, GLOSS 30, B/G,	0.017 GA
HA3100A15	THRUBOLT 10-32 X 8.375	4.000 EA
152326	DBSC-VP-6-MA-230/460 VAC	1.000 EA
MN416A01	TAG-INSTAL-MAINT no wire (2200bx) 4/22	1.000 EA
LC0005E01	CONN.DIA./WARNING LABEL (LC0005/LB1119N)	1.000 EA
NP1372L	ALUM UL CSA CE CC	1.000 EA
36PA1001	PKG GRP, PRINT PK1017A06	1.000 EA
PK3082	STYROFOAM CRADLE	1.000 EA
PE-0000001	ZRTG PE ASSEMBLY	1.000 EA

AC Induction Motor Performance Data

Record # 87328

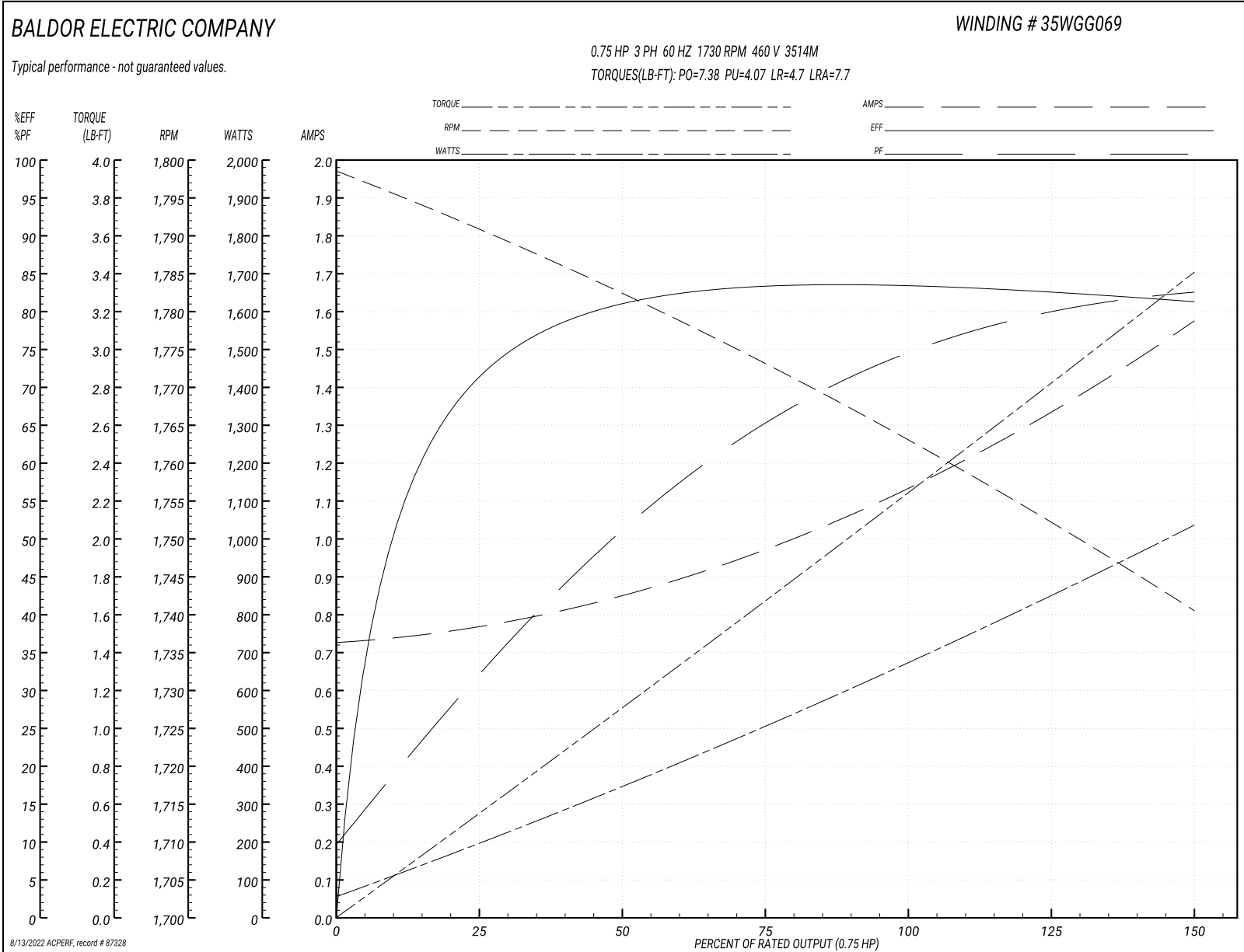
Typical performance - not guaranteed values

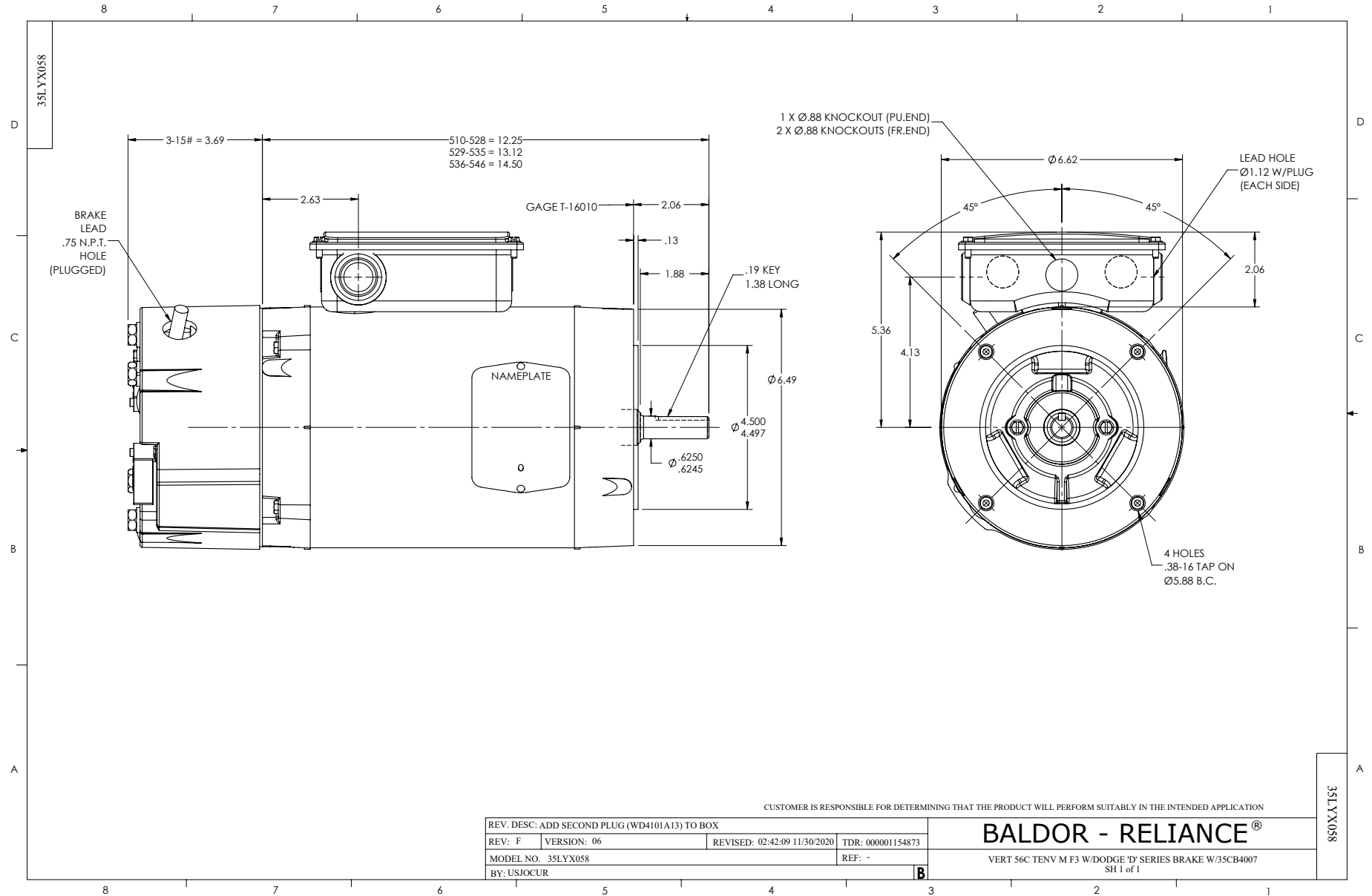
Winding: 35WGG069-R012		Type: 3514M		Enclosure: TENV		
Nameplate Data			460 V, 60 Hz: High Voltage Connection			
Rated Output (HP)	.75	Full Load Torque		2.25 LB-FT		
Volts	208-230/460	Start Configuration		direct on line		
Full Load Amps	2.36-2.28/1.14	Breakdown Torque		7.38 LB-FT		
R.P.M.	1730	Pull-up Torque		4.07 LB-FT		
Hz	60 Phase	3	Locked-rotor Torque		4.7 LB-FT	
NEMA Design Code	B KVA Code	K	Starting Current		7.7 A	
Service Factor (S.F.)	1.15	No-load Current		0.734 A		
NEMA Nom. Eff.	82.5	Power Factor	74	Line-line Res. @ 25°C		31.8 Ω
Rating - Duty	40C AMB-CONT	Temp. Rise @ Rated Load		56°C		
S.F. Amps	2.6-2.52/1.26	Temp. Rise @ S.F. Load		67°C		
			Locked-rotor Power Factor		64.9	
			Rotor inertia		0.101 lb-ft ²	

Load Characteristics 460 V, 60 Hz, 0.75 HP

% of Rated Load	25	50	75	100	125	150	S.F.
Power Factor	33	52	65	74	80	83	78
Efficiency	71.4	81	83.3	83.6	82.7	81.2	83.1
Speed	1790	1782	1773	1763	1753	1740	1757
Line amperes	0.761	0.849	0.976	1.14	1.34	1.57	1.26

Performance Graph at 460V, 60Hz, 0.75HP Typical performance - Not guaranteed values





CD0005



LOW VOLTAGE (2Y)



LINE

HIGH VOLTAGE (1Y)



LINE

NOTES:

1. INTERCHANGE ANY TWO LINE LEADS TO REVERSE ROTATION.
2. OPTIONAL THERMOSTATS ARE PROVIDED WHEN SPECIFIED.
3. ACTUAL NUMBER OF INTERNAL PARALLEL CIRCUITS MAY BE A MULTIPLE OF THOSE SHOWN ABOVE.
4. LEAD COLORS ARE OPTIONAL. LEADS MUST ALWAYS BE NUMBERED AS SHOWN.

REV. DESC: REVISE TO SHOW OPTIONAL COLORS			
REV. LTR: E	BY: JLP	REVISED: 01/19/99 10:15	TDR: 0171435
90000		FILE: AAA00005140	MDL: -
		MTL: -	

BALDOR ELECTRIC Co.

3PH, DV, 9 LEADS

CD0005

CD2120

WIRING CONNECTIONS (1 PHASE VAC)

	POWER LINE A	POWER LINE B	CAP TOGETHER	CAP ALONE
AC LOW VOLT.	B1	B2	B3 & B5	B4
AC HIGH VOLT.	B1 & B5	B2	---	B3 CAP ALONE B4 CAP ALONE
DC VOLT.	B1	B2	B3 & B5	B4

B1 WHITE
B2 BLACK
B3 GRAY
B4 BLUE
B5 RED

CD2120

REV. DESC: NEW		
REV. LTR: -	VERSION: 00	TDR: 000000741785
FILE: \CKA\00037\282	REVISED: 12:28:11 04/12/2012	
MTL: -	BY: CKRONSO	

BALDOR • DODGE • RELIANCE

D-SERIES MOTOR BRAKE 5LD AC\DC

SH 1 of 1