

# ABB BALDOR RELIANCE III

---

## Customer information packet

### VDM3538

.5HP, 1725RPM, 3PH, 60HZ, 56C, 3420M, TEFC, F1

Class - None

Division - Not Applicable

**Specifications**

<b>Enclosure</b>	TEFC
<b>Frame</b>	56C
<b>Frame Material</b>	Steel
<b>Frequency</b>	60.00 Hz
<b>Haz Area Class and Group</b>	None
<b>Haz Area Division</b>	Not Applicable
<b>Motor Letter Type</b>	Three Phase
<b>Output @ Frequency</b>	.500 HP @ 60 HZ
<b>Phase</b>	3
<b>Synchronous Speed @ Frequency</b>	1800 RPM @ 60 HZ
<b>Voltage @ Frequency</b>	460.0 V @ 60 HZ 230.0 V @ 60 HZ
<b>Agency Approvals</b>	CCSA US UR
<b>Ambient Temperature</b>	40 °C
<b>Auxiliary Box</b>	NO AUXILLARY BOX
<b>Auxiliary Box Lead Termination</b>	None
<b>Base Indicator</b>	No Mounting
<b>Bearing Grease Type</b>	Polyrex EM (-20F +300F)
<b>Blower</b>	None
<b>Constant Torque Speed Range</b>	6
<b>Current @ Voltage</b>	1.600 A @ 208.0 V 1.800 A @ 230.0 V .900 A @ 460.0 V
<b>Design Code</b>	B
<b>Drip Cover</b>	No Drip Cover
<b>Duty Rating</b>	CONT
<b>Efficiency @ 100% Load</b>	75.5 %
<b>Electrically Isolated Bearing</b>	Not Electrically Isolated
<b>Feedback Device</b>	NO FEEDBACK
<b>Front Face Code</b>	Standard
<b>Front Shaft Indicator</b>	None

**Part Detail**

<b>Revision</b>	M
<b>Type</b>	AC
<b>Mech. spec.</b>	34M808
<b>Base</b>	
<b>Status</b>	PRD/A
<b>Elec. spec.</b>	34WG0097
<b>Layout</b>	34LYM808
<b>Eff. date</b>	12-01-2025
<b>CD Diagram</b>	CD0005
<b>Poles</b>	04
<b>Leads</b>	9#18
<b>Proprietary</b>	False
<b>Created date</b>	04-18-2016

<b>Heater Indicator</b>	No Heater
<b>High Voltage Full Load Amps</b>	0.9 a
<b>Insulation Class</b>	F
<b>Inverter Code</b>	Not Inverter
<b>KVA Code</b>	M
<b>Lifting Lugs</b>	No Lifting Lugs
<b>Locked Bearing Indicator</b>	Locked Bearing
<b>Max Speed</b>	2700 rpm
<b>Motor Lead Exit</b>	Ko Box
<b>Motor Lead Quantity/Wire Size</b>	9 @ 18 AWG
<b>Motor Lead Termination</b>	Flying Leads
<b>Motor Standards</b>	NEMA
<b>Motor Type</b>	3420M
<b>Mounting Arrangement</b>	F1
<b>Number of Poles</b>	4
<b>Overall Length</b>	11.35 IN
<b>Power Factor</b>	69
<b>Product Family</b>	Dirty Duty Plus
<b>Pulley End Bearing Type</b>	Sealed Bearing
<b>Pulley Face Code</b>	C-Face
<b>Pulley Shaft Indicator</b>	Standard
<b>Rodent Screen</b>	None
<b>RoHS Status</b>	ROHS COMPLIANT
<b>Service Factor</b>	1.25
<b>Shaft Diameter</b>	0.625 IN
<b>Shaft Extension Location</b>	Pulley End
<b>Shaft Ground Indicator</b>	No Shaft Grounding
<b>Shaft Rotation</b>	Reversible
<b>Shaft Slinger Indicator</b>	No Slinger
<b>Speed</b>	1725 rpm
<b>Speed Code</b>	Single Speed
<b>Starting Method</b>	Direct on line
<b>Thermal Device - Bearing</b>	None
<b>Thermal Device - Winding</b>	None

**Vibration Sensor Indicator**

**No Vibration Sensor**

---

**Winding Thermal 1**

**None**

---

**Winding Thermal 2**

**None**

---

**Nameplate**

<b>NP3659</b>	
<b>CAT.NO.</b>	VDM3538
<b>SPEC.</b>	34M808-0097G1 <b>ENCL</b> TEFC
<b>FRAME</b>	56C <b>H.P.</b> .5
<b>VOLTS</b>	230/460
<b>AMPS</b>	1.8/9 <b>IP</b> 56
<b>R.P.M.</b>	1725
<b>HZ.</b>	60 <b>PH.</b> 3 <b>CLASS</b> F
<b>SER.F.</b>	1.25 <b>DES.</b> B <b>CC</b>
<b>NEMA NOM. EFF.</b>	75.5
<b>RATING</b>	40C AMB-CONT
<b>DE</b>	6203 <b>ODE</b> 6203
<b>GREASE</b>	POLYREX EM
<b>SN</b>	50C AT 1.0SF SFA 2/1

**Parts List**

<b>Part number</b>	<b>Description</b>	<b>Quantity</b>
SA320608	SA 34M808-0097G1	1.000 ea
RA308338	RA 34M808-0097G1	1.000 ea
NS2512A01	INSULATOR, CONDUIT BOX X	1.000 ea
34CB1000A01E	CONDUIT BOX, WASHDOWN, W/E-COATED	1.000 ea
34GS1017	GASKET, CONDUIT BOX MODEL 34 (BLACK NEOP	1.000 ea
51XB1016A07	10-16 X 7/16 HXWSSLD SERTYB	2.000 ea
11XW1032G06	10-32 X .38, TAPTITE II, HEX WSHR SLTD U	1.000 ea
34EP1100A137LP2	FRONT EP TEFC 203 BRG W/ SEAL	1.000 ea
HW4601A23	INPRO SEAL, 203 BRG, VBX	1.000 ea
HW4500S33	1/8 NPT STAINLESS #304 SS PLUG	3.000 ea
HA4054	SHORT T-DRAIN FITTING, .125" N.P.T.	1.000 ea
HW5100A03	WAVY WASHER (W1543-017)	1.000 ea
34EP1300A35E	ENDPLATE, MACH W/E-COAT	1.000 ea
HW4606A01	JM CLIPPER/SEAL (WDE-0667-1064-BH49)	1.000 ea
HW4500S33	1/8 NPT STAINLESS #304 SS PLUG	3.000 ea
HA4054	SHORT T-DRAIN FITTING, .125" N.P.T.	1.000 ea
12XN1032S20	10-32 X 1-1/4 HEX M.S. , STAINLESS STEEL	2.000 ea
34FN3002A01SP	EXTERNAL FAN, PLASTIC, .637/.639 HUB W/	1.000 ea
34FH4002A01LP2	IEC FH NO GREASER	1.000 ea
11XW1032S06	10-32 X .38, TAPTITE II, HEX WSHR SLTD U	3.000 ea
34CB4500E	CONDUIT BOX LID, E-COAT	1.000 ea
34GS1007	GASKET, CONDUIT BOX LID MODEL 34 (BLACK	1.000 ea
59XW0832S07	TAPTITE II,HEX WSHR UNSLTD SER,410 S.S.,	4.000 ea
HW2502D13	SS KEY, 3/16 SQ X 1.375	1.000 ea
HA7000A04	KEY RETAINER 0.625 DIA SHAFTS	1.000 ea
MJ5001A02	732 CL SEALANT 3 OZ DIXIE BEARING 289100	0.001 ea
LB1164	LABEL,WARNING AND DRAIN	1.000 ea
MJ5001A23	P.D. GEORGE B-276 AIR DRY VARNISH	0.001 ga
LB1000	LABEL, DIRTY DUTY	1.000 ea
HW3001B02	BRASS CUP WASHER W/GROUND SYMBOL TAB,	1.000 ea
WD1000D21	TRM,T&B #B71M,RING,18-14,.25,NON-INSL	9.000 ea

85XU0407S04	4X1/4 U DRIVE PIN STAINLESS	2.000 ea
MG2000A17	RUST INHIBITOR PART # SRPO #20	0.001 ga
MG1025L01	WILKOFAS FD, 786.04, BLACK	0.014 ga
MG1500Y02	WILKOPON PRIMER YELLOW	0.014 ga
HA3100S08	THRUBOLT 7.375LG SS	4.000 ea
MN416A01	TAG-INSTAL-MAINT no wire (2500 bx)11/25	1.000 ea
LC0005	CONN.DIA.,TY M,9-LD,DUAL VOLT,REVERSING	1.000 ea
NP3659	SS DIRTY DUTY PLUS UL CSA-C US EEV CC	1.000 ea
35PA1066	PKG GRP, PRINT PK1008A07	1.000 ea
PK3083	STYROFOAM PACKING CRADLE	1.000 ea
PK3088	MICROFOAM, 8"X"8 PERF. SHEETS	1.000 ea

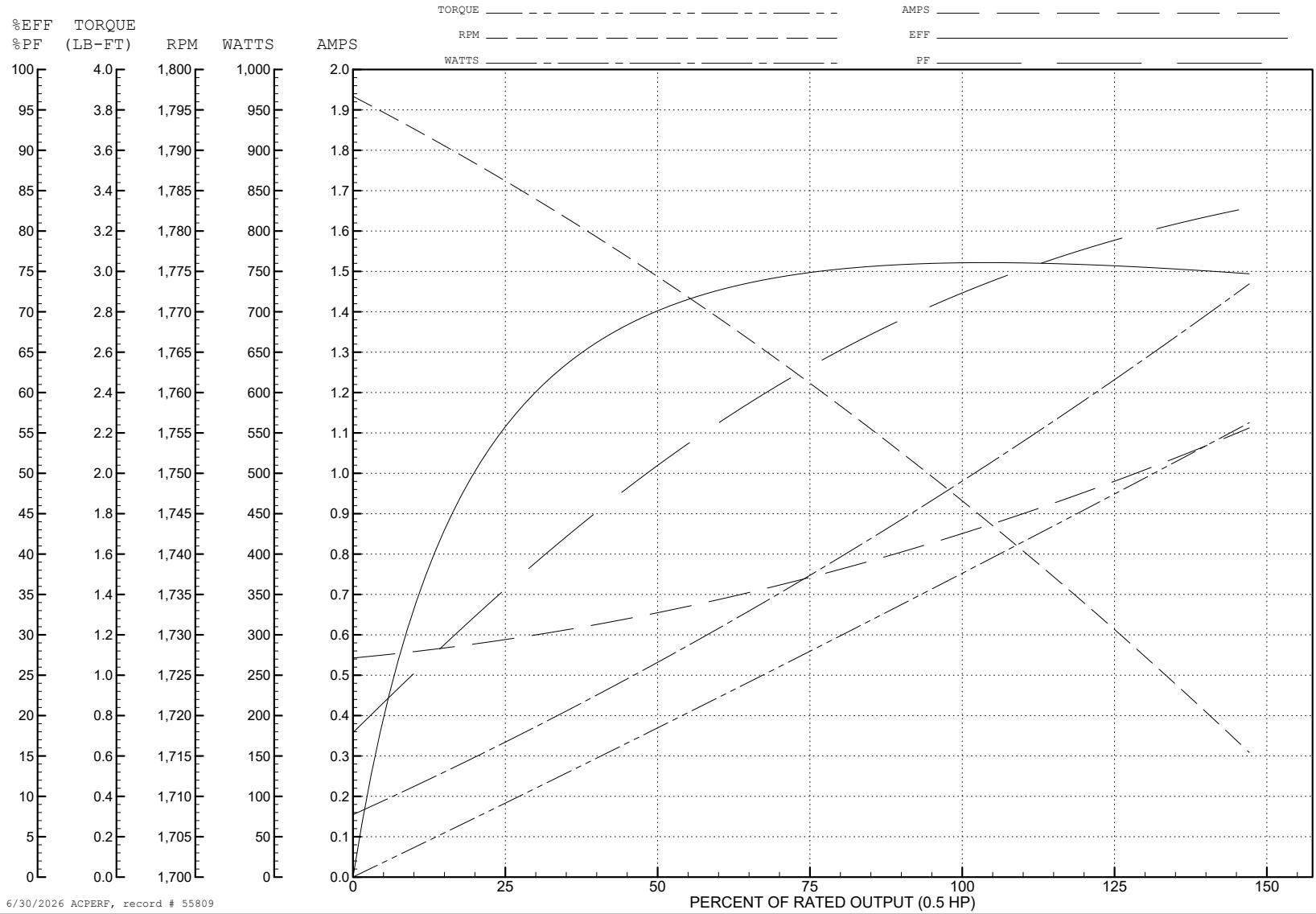
ABB Motors and Mechanical Inc.

WINDING # 34WG0097

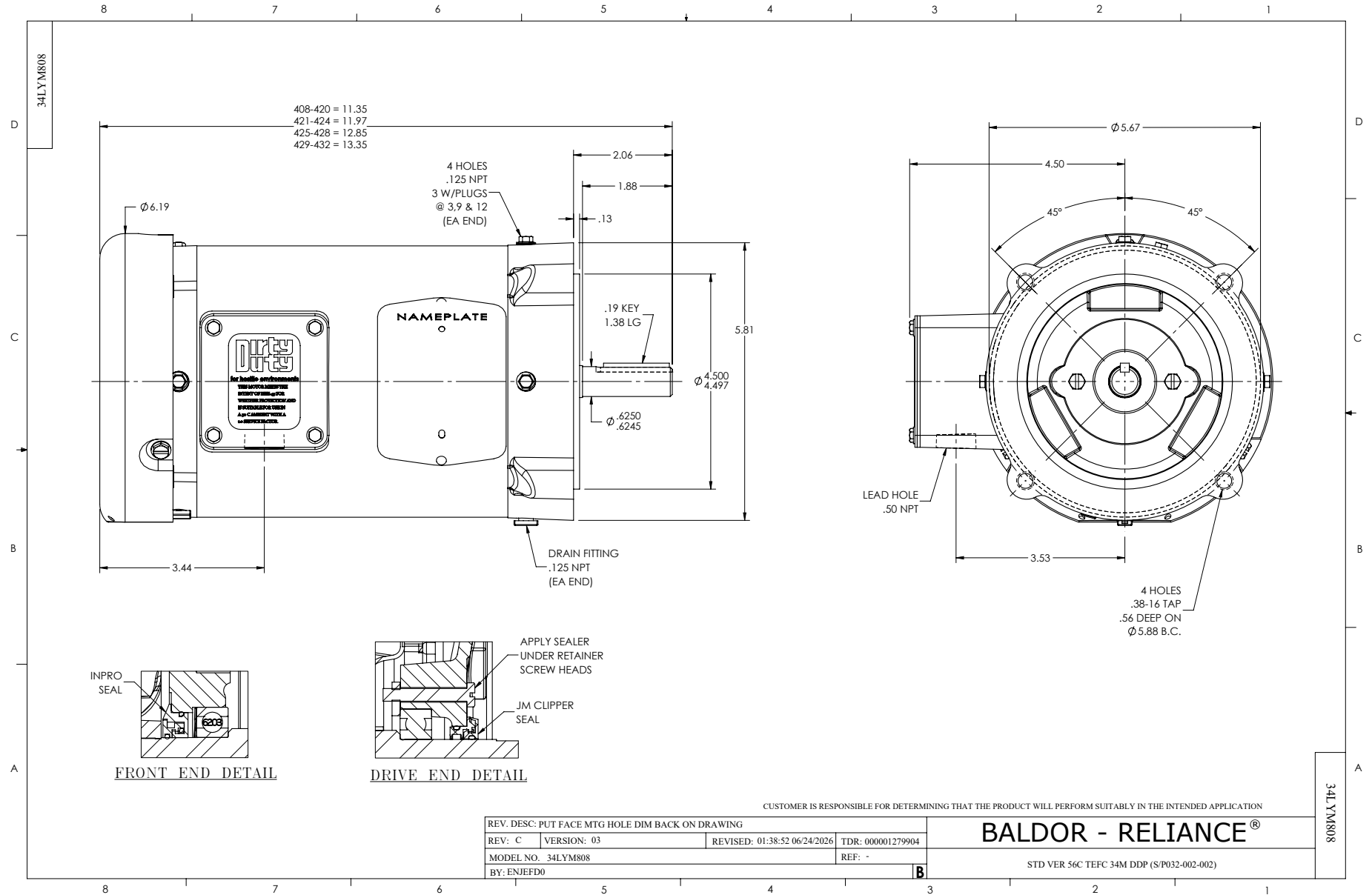
0.5 HP 3 PH 60 HZ 1725 RPM 460 V 3420M

Typical performance - not guaranteed values.

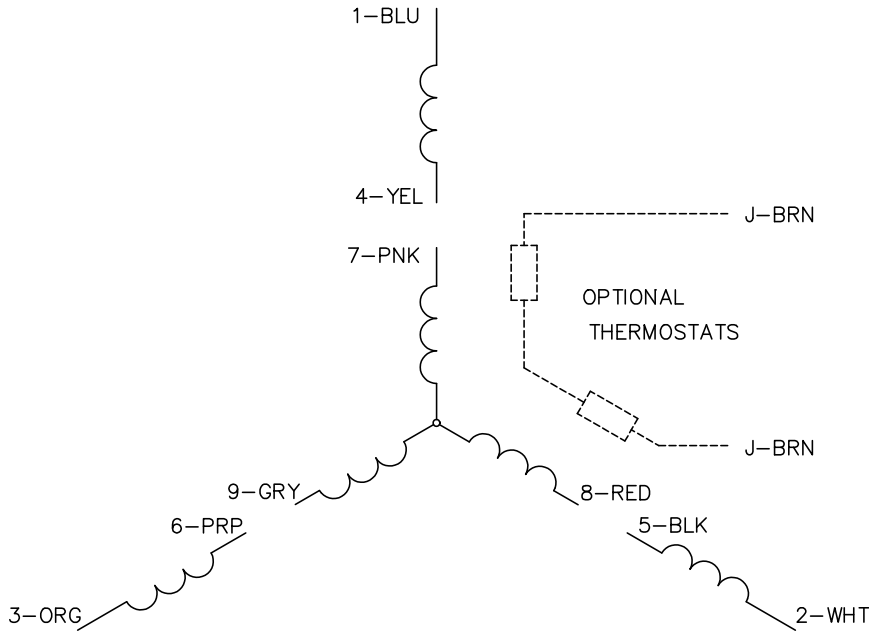
TORQUES (LB-FT): PO=6.8 PU=4.6 LR=5.8 LRA=7



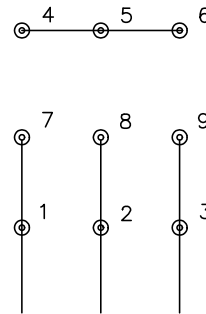
6/30/2026 ACPERF, record # 55809



CD0005

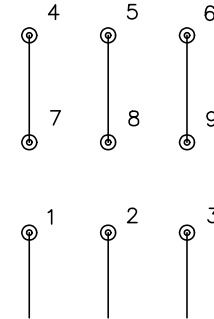


LOW VOLTAGE  
(2Y)



LINE

HIGH VOLTAGE  
(1Y)



LINE

**NOTES:**

1. INTERCHANGE ANY TWO LINE LEADS TO REVERSE ROTATION.
2. OPTIONAL THERMOSTATS ARE PROVIDED WHEN SPECIFIED.
3. ACTUAL NUMBER OF INTERNAL PARALLEL CIRCUITS MAY BE A MULTIPLE OF THOSE SHOWN ABOVE.
4. LEAD COLORS ARE OPTIONAL. LEADS MUST ALWAYS BE NUMBERED AS SHOWN.

CD0005

REV. DESC: REVISE TO SHOW OPTIONAL COLORS

REV. LTR: E BY: JLP REVISED: 01/19/99 10:15 TDR: 0171435

500000

FILE: AAA00005140

MDL: -

MTL: -

**BALDOR ELECTRIC Co.**

3PH, DV, 9 LEADS