

**BALDOR® • RELIANCE®**

---

# Customer information packet

## VEJMM3211T

3HP, 1765RPM, 3PH, 60HZ, 182JM, 3630M, ODP, F1

Class - None

Division - Not Applicable

## Specifications

Enclosure	ODP
Frame	182JM
Frame Material	Steel
Frequency	60.00 Hz
Motor Letter Type	Three Phase
Output @ Frequency	3.000 HP @ 60 HZ
Phase	3
Synchronous Speed @ Frequency	1800 RPM @ 60 HZ
Voltage @ Frequency	460.0 V @ 60 HZ 230.0 V @ 60 HZ
XP Class and Group	None
XP Division	Not Applicable
Agency Approvals	CSA CSA EEV UR
Ambient Temperature	40 °C
Auxillary Box	No Auxillary Box
Auxillary Box Lead Termination	None
Base Indicator	No Mounting
Bearing Grease Type	Polyrex EM (-20F +300F)
Blower	None
Current @ Voltage	8.400 A @ 230.0 V 8.500 A @ 208.0 V 4.200 A @ 460.0 V
Design Code	B
Drip Cover	Drip Cover
Duty Rating	CONT
Efficiency @ 100% Load	89.5 %
Electrically Isolated Bearing	Not Electrically Isolated
Feedback Device	NO FEEDBACK
Front Face Code	Standard
Front Shaft Indicator	None

## Part detail

Revision	E
Type	AC
Mech. spec.	36Q830
Base	
Status	PRD/A
Elec. spec.	36WGS658
Layout	36LYQ830
Eff. date	07-27-2021
CD Diagram	CD0005
Poles	04
Leads	9#16
Proprietary	False
Created date	07-18-2016

Heater Indicator	No Heater
High Voltage Full Load Amps	4.2 a
Insulation Class	F
Inverter Code	Inverter Ready
KVA Code	K
Lifting Lugs	Standard Lifting Lugs
Locked Bearing Indicator	Locked Bearing
Motor Lead Exit	Ko Box
Motor Lead Quantity/Wire Size	9 @ 16 AWG
Motor Lead Termination	Flying Leads
Motor Standards	NEMA
Motor Type	3630M
Mounting Arrangement	F1
Number of Poles	4
Overall Length	18.04 IN
Power Factor	74
Product Family	General Purpose
Pulley End Bearing Type	Ball
Pulley Face Code	C-Face
Pulley Shaft Indicator	Tapped & Key
Rodent Screen	Included
RoHS Status	ROHS COMPLIANT
Service Factor	1.15
Shaft Diameter	0.875 IN
Shaft Extension Location	Pulley End
Shaft Ground Indicator	No Shaft Grounding
Shaft Rotation	Reversible
Shaft Slinger Indicator	Shaft Slinger
Speed	1765 rpm
Speed Code	Single Speed
Starting Method	Direct on line
Thermal Device - Bearing	None
Thermal Device - Winding	None
Vibration Sensor Indicator	No Vibration Sensor

Winding Thermal 1

None

---

Winding Thermal 2

None

---

**Nameplate**

<b>NP3553LUA</b>										
<b>CAT.NO.</b>	VEJMM3211T									
<b>SPEC.</b>	36Q830S658G1									
<b>HP</b>	3									
<b>VOLTS</b>	230/460									
<b>AMPS</b>	8.4/4.2									
<b>RPM</b>	1765									
<b>FRAME</b>	182JM		<b>HZ</b>	60		<b>PH</b>	3			
<b>SF</b>	1.15	<b>CODE</b>	K	<b>DES</b>	B	<b>CLASS</b>	F			
<b>NEMA NOM. EFF</b>	89.5	<b>PF</b>	74							
<b>RATING</b>	40C AMB-CONT									
<b>CC</b>	010A		<b>USABLE AT 208V</b>	8.5						
<b>DE</b>	6207	<b>ODE</b>	6205							
<b>ENCL</b>	ODP	<b>SN</b>								
<b>VPWM INVERTER READY</b>										
<b>CT30-60(2:1) VT3-60(20:1)</b>										
<b>USABLE AT</b>	50Hz 3HP 190/380V 9.8/4.9A								<b>SF1.0</b>	

## Parts list

Part number	Description	Quantity
SA324430	SA 36Q830S658G1	1.000 ea
RA312264	RA 36Q830S658G1	1.000 ea
36CB3004	36 CB CASTING W/1.09 DIA LEAD HOLE @ 6:0	1.000 ea
51XB1016A07	10-16 X 7/16 HXWSSLD SERTYB	2.000 ea
11XW1032G06	10-32 X .38, TAPTITE II, HEX WSHR SLTD U	1.000 ea
36EP3204B01	B00 W/DRIP CVR	1.000 ea
HW4500A01	1641B(ALEMITE)400 UNIV, GREASE FITT	1.000 ea
HA1103A08	RODENT SCREEN, 36 FRAME, OPEN, FRONT END	1.000 ea
51XW1032A06	10-32 X .38, TAPTITE II, HEX WSHR SLTD S	2.000 ea
HW1000A10	#10 FLAT WASHER (SAE)	4.000 ea
10XN2520A26	1/4-20X 1 5/8 HEX HD	4.000 ea
HW1000A10	#10 FLAT WASHER (SAE)	2.000 ea
HW5100A05	WVY WSHR F/205 & 304 BRGS	1.000 ea
36EP3405A19	PUEP 182-4C OPEN 207 BRG W/BAFF. TSLV, G	1.000 ea
HW4500A01	1641B(ALEMITE)400 UNIV, GREASE FITT	1.000 ea
36AD2000	AIR BAFFLE	1.000 ea
60XW0632A06	6-32 X 3/8 TORX HEAD SCREW TAPTITE II	4.000 ea
15XF0632A06	6-32 X 3/8 PHILL PAN HD TYPE F	4.000 ea
HA1102A07	RODENT SCREEN 36 OPEN FACE	2.000 ea
51XW1032A06	10-32 X .38, TAPTITE II, HEX WSHR SLTD S	4.000 ea
HW1001A25	LOCKWASHER 1/4, ZINC PLT .493 OD, .255 I	4.000 ea
36FH4012A01	DRIP COVER NOTCH BOTTOM, W/ PRIMER	1.000 ea
51XW1032A06	10-32 X .38, TAPTITE II, HEX WSHR SLTD S	3.000 ea
36CB4516	750LIPPED CB LID - GALVANNEAL	1.000 ea
51XW0832A07	8-32 X .44, TAPTITE II, HEX WSHR SLTD SE	4.000 ea
HA1005A07	SLINGER, OD 2.25, ID 1.344, 307 BRG	1.000 ea
HW2501D13	KEY, 3/16 SQ X 1.375	1.000 ea
HA7000A01	KEY RETAINER 7/8" DIA SHAFT	1.000 ea
85XU0407S04	4X1/4 U DRIVE PIN STAINLESS	2.000 ea
MJ1000A02	GREASE, POLYREX EM EXXON	0.050 lb
MG1000Y03	MUNSELL 2.53Y 6.70/ 4.60, GLOSS 20,	0.022 ga

HA3101A25	THRUBOLT 1/4-20 X 11.000 OHIO ROD	4.000 ea
LC0005E01	CONN.DIA./WARNING LABEL (LC0005/LB1119N)	1.000 ea
NP3553LUA	ALUM SUPER-E VPWM INVERTER READY UL	1.000 ea
G7PA1000	PKG GRP, PRINT PK1034A06	1.000 ea
MN416A01	TAG-INSTAL-MAINT no wire (2100bx)4/22	1.000 ea

**AC Induction Motor Performance Data**

Record # 58171

Typical performance - not guaranteed values

<b>Winding: 36WGS658-R019</b>		<b>Type: 3630M</b>		<b>Enclosure: ODP</b>	
<b>Nameplate Data</b>			<b>460 V, 60 Hz: High Voltage Connection</b>		
<b>Rated Output (HP)</b>		3	<b>Full Load Torque</b>		8.87 LB-FT
<b>Volts</b>		230/460	<b>Start Configuration</b>		direct on line
<b>Full Load Amps</b>		8.4/4.2	<b>Breakdown Torque</b>		37.4 LB-FT
<b>R.P.M.</b>		1765	<b>Pull-up Torque</b>		17.3 LB-FT
<b>Hz</b>	60 Phase	3	<b>Locked-rotor Torque</b>		21.2 LB-FT
<b>NEMA Design Code</b>	B KVA Code	K	<b>Starting Current</b>		32.3 A
<b>Service Factor (S.F.)</b>		1.15	<b>No-load Current</b>		2.43 A
<b>NEMA Nom. Eff.</b>	89.5 Power Factor	74	<b>Line-line Res. @ 25°C</b>		3.8716 Ω
<b>Rating - Duty</b>		40C AMB-CONT	<b>Temp. Rise @ Rated Load</b>		24°C
<b>S.F. Amps</b>			<b>Temp. Rise @ S.F. Load</b>		28°C
			<b>Locked-rotor Power Factor</b>		43
			<b>Rotor inertia</b>		0.279 LB-FT <sup>2</sup>

**Load Characteristics 460 V, 60 Hz, 3 HP**

<b>% of Rated Load</b>	<b>25</b>	<b>50</b>	<b>75</b>	<b>100</b>	<b>125</b>	<b>150</b>	<b>S.F.</b>
<b>Power Factor</b>	33	53	66	73	79	81	77
<b>Efficiency</b>	80.2	87.5	89.5	89.7	89.5	88.7	89.6
<b>Speed</b>	1791.1	1783	1774.5	1765.5	1755.7	1744.8	1760
<b>Line amperes</b>	2.6	2.99	3.54	4.25	4.97	5.83	4.68



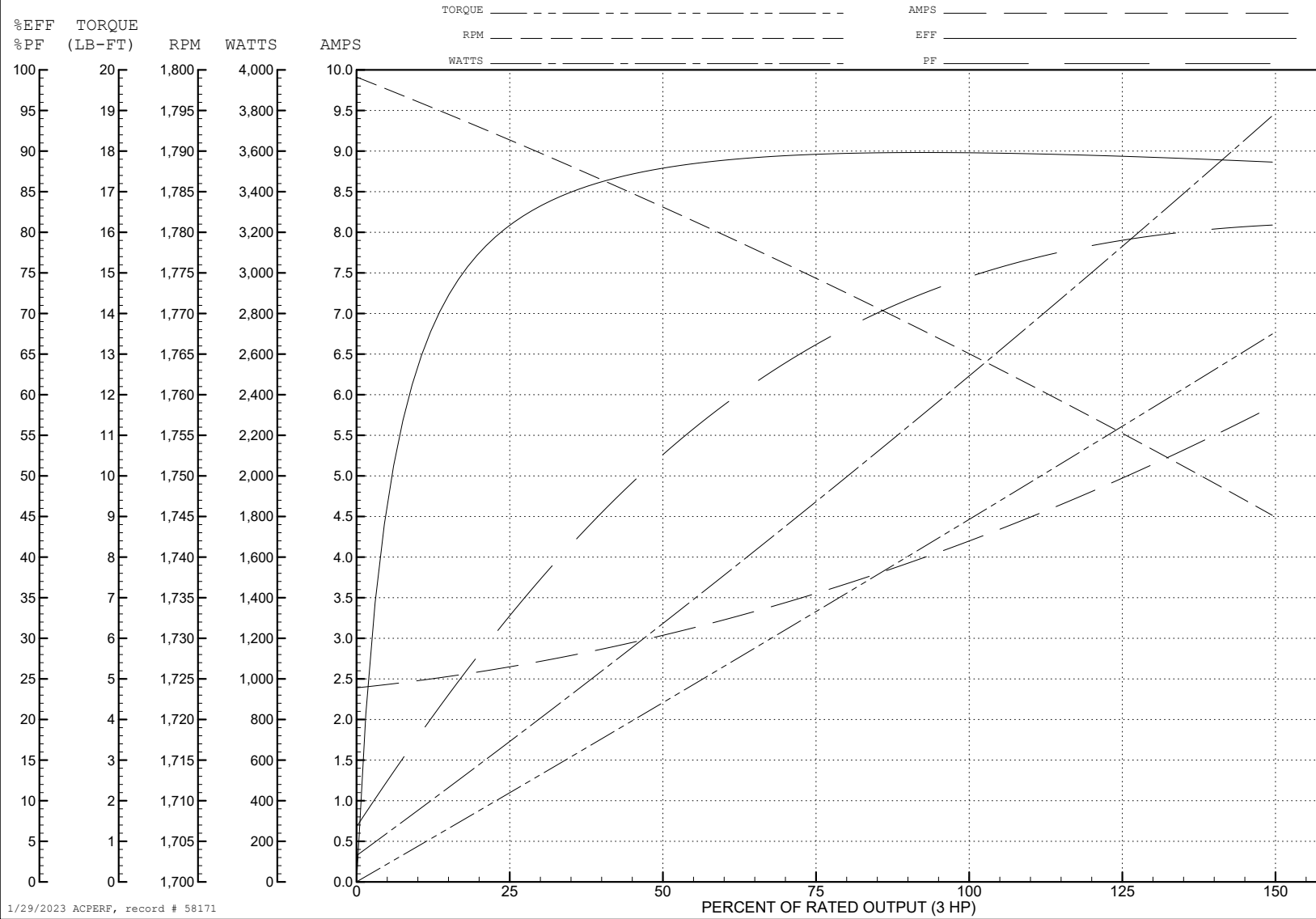
ABB Motors and Mechanical Inc.

WINDING # 36WGS658

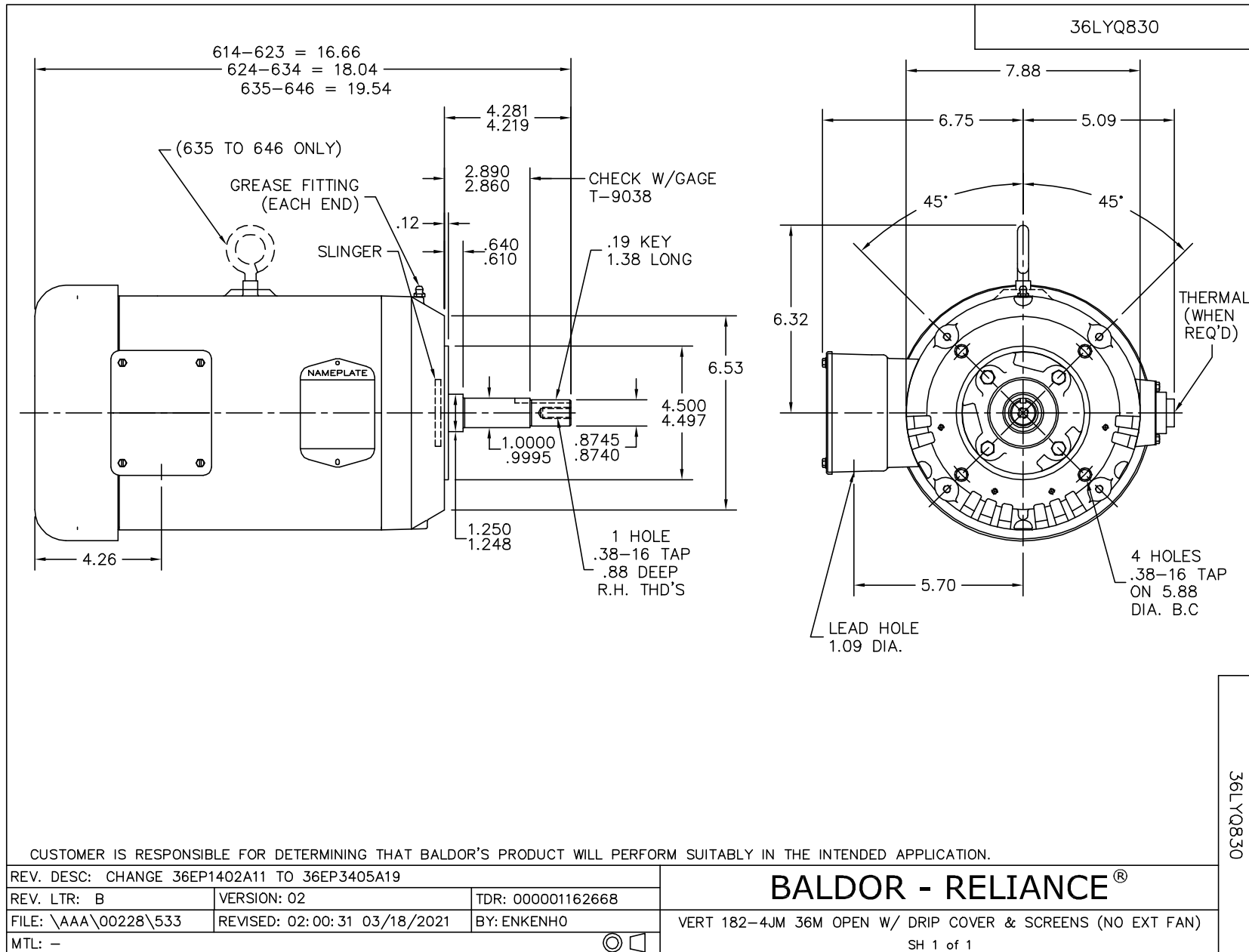
3 HP 3 PH 60 HZ 1765 RPM 460 V 3630M

Typical performance - not guaranteed values.

TORQUES (LB-FT): PO=37.4 PU=17.3 LR=21.2 LRA=32.3



1/29/2023 ACPERF, record # 58171



CUSTOMER IS RESPONSIBLE FOR DETERMINING THAT BALDOR'S PRODUCT WILL PERFORM SUITABLY IN THE INTENDED APPLICATION.

REV. DESC: CHANGE 36EP1402A11 TO 36EP3405A19		
REV. LTR: B	VERSION: 02	TDR: 000001162668
FILE: \AAA\00228\533	REVISED: 02:00:31 03/18/2021	BY: ENKENHO
MTL: -	⊙ □	

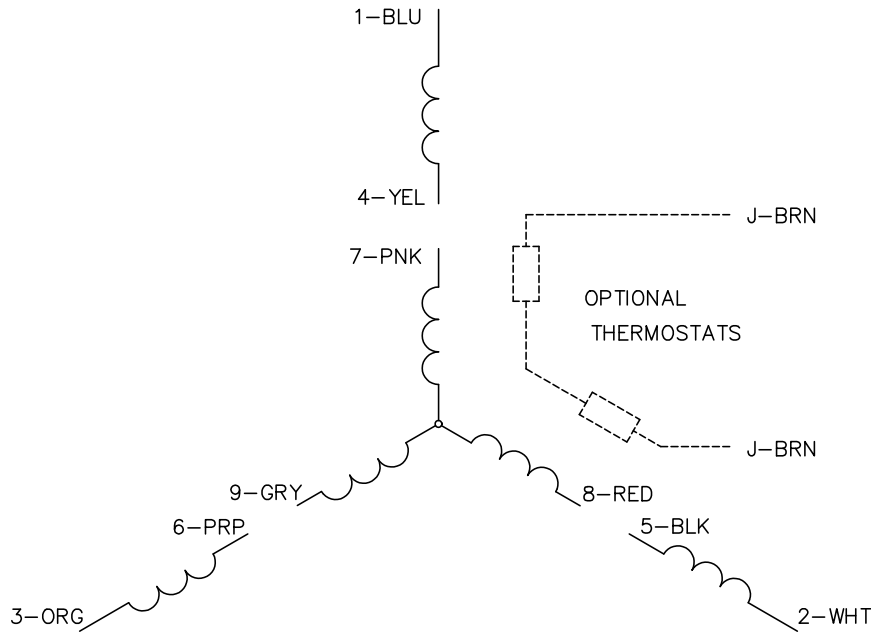
**BALDOR - RELIANCE®**

VERT 182-4JM 36M OPEN W/ DRIP COVER & SCREENS (NO EXT FAN)

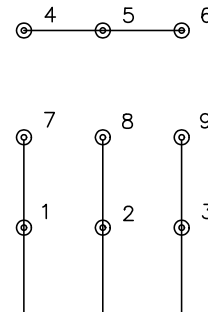
SH 1 of 1

36LYQ830

CD0005

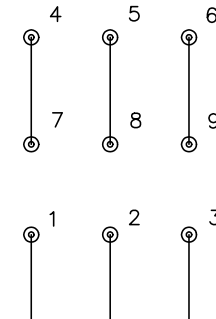


LOW VOLTAGE  
(2Y)



LINE

HIGH VOLTAGE  
(1Y)



LINE

NOTES:

1. INTERCHANGE ANY TWO LINE LEADS TO REVERSE ROTATION.
2. OPTIONAL THERMOSTATS ARE PROVIDED WHEN SPECIFIED.
3. ACTUAL NUMBER OF INTERNAL PARALLEL CIRCUITS MAY BE A MULTIPLE OF THOSE SHOWN ABOVE.
4. LEAD COLORS ARE OPTIONAL. LEADS MUST ALWAYS BE NUMBERED AS SHOWN.

CD0005

REV. DESC: REVISE TO SHOW OPTIONAL COLORS			
REV. LTR: E	BY: JLP	REVISED: 01/19/99 10:15	TDR: 0171435
S00000		FILE: AAA00005140	MDL: -
		MTL: -	

**BALDOR ELECTRIC Co.**

3PH, DV, 9 LEADS