

ABB BALDOR RELIANCE III

Customer information packet

VFSWDNM3610T-E

3HP, 3500RPM, 3PH, 60HZ, 182TC, 3646M, TENV, F1

Class - None

Division - Not Applicable

Specifications

Enclosure	TENV
Frame	182TC
Frame Material	Stainless Steel
Frequency	60.00 Hz
Haz Area Class and Group	None
Haz Area Division	Not Applicable
Motor Letter Type	Three Phase
Output @ Frequency	3.000 HP @ 60 HZ
Phase	3
Synchronous Speed @ Frequency	3600 RPM @ 60 HZ
Voltage @ Frequency	230.0 V @ 60 HZ 460.0 V @ 60 HZ
Agency Approvals	CSA NEMA PREMIUM UR
Ambient Temperature	40 °C
Auxiliary Box	NO AUXILLARY BOX
Auxiliary Box Lead Termination	None
Base Indicator	No Mounting
Bearing Grease Type	Polyrex EM (-20F +300F)
Blower	None
Current @ Voltage	3.500 A @ 460.0 V 7.000 A @ 230.0 V
Design Code	A
Drip Cover	No Drip Cover
Duty Rating	CONT
Efficiency @ 100% Load	89.5 %
Electrically Isolated Bearing	Not Electrically Isolated
Feedback Device	NO FEEDBACK
Front Shaft Indicator	None
Heater Indicator	No Heater
High Voltage Full Load Amps	3.5 a

Part Detail

Revision	Q
Type	AC
Mech. spec.	36R540
Base	
Status	PRD/A
Elec. spec.	36WGR690
Layout	36LYR540
Eff. date	04-06-2026
CD Diagram	CD0005
Poles	02
Leads	9#16
Proprietary	False
Created date	07-14-2017

Insulation Class	H
Inverter Code	Inverter Ready
KVA Code	P
Lifting Lugs	Standard Lifting Lugs
Locked Bearing Indicator	Locked Bearing
Motor Lead Quantity/Wire Size	9 @ 16 AWG
Motor Lead Termination	Flying Leads
Motor Standards	NEMA
Motor Type	3646M
Mounting Arrangement	F1
Number of Poles	2
Overall Length	17.05 IN
Power Factor	92
Product Family	WD All SS Encapsulated
Pulley End Bearing Type	Sealed Bearing
Pulley Face Code	C-Face
Pulley Shaft Indicator	Standard
Rodent Screen	None
RoHS Status	ROHS COMPLIANT
Service Factor	1.15
Shaft Diameter	1.125 IN
Shaft Ground Indicator	No Shaft Grounding
Shaft Rotation	Reversible
Shaft Slinger Indicator	Shaft Slinger
Speed	3500 rpm
Speed Code	Single Speed
Starting Method	Direct on line
Thermal Device - Bearing	None
Thermal Device - Winding	None
Vibration Sensor Indicator	No Vibration Sensor
Winding Thermal 1	None
Winding Thermal 2	None

Nameplate

NP4427AAA01

CAT #	VFSWDM3610T-E	WT	96	LBS	
SPEC	36R540R690G1	ENCL	TENV		
SER #		CC	010A	IP	69
HP	3	MAG CUR	2.4/1.2		
VOLTS	230/460	NEMA NOM. EFF		89.5	
AMPS	7/3.5	PF	92		
RATING	40C AMB-CONT				
RPM	3500	MAX RPM	5400		
FRAME	182TC	HZ	60	CODE	P
		CLASS	H		
SER.F.	1.15	SF AMP	8/4	PH	3
		DES	A		
DE	6206	ODE	6206		
LUBRICATION	POLYREX EM				
ID LOGO	INVERTER TYPE	VPWM	CHP	60	TO
				90	1.5:1
ID LOGO	WK2	0.207	CT	15	TO
				60	4:1
ID LOGO	SL HZ	1.7	VT	3	TO
				60	20:1
YR		QR			

Parts List

Part number	Description	Quantity
SA343505	SA 36R540R690G1	1.000 ea
RA331965	RA 36R540R690G1	1.000 ea
35CB1017A02	5/36 MID SECT - 3 PC. CONDUIT BOX 3/4 N	1.000 ea
RM1070A81	O-RING, -043 VITON/FKM .070CS X 3.489ID	1.000 ea
HA3424S48	STUD - M6X1.0 THDS X 3.00"	1.000 ea
11XW1032G08	10-32 X .50, TAPTITE II, HEX WSHR SLTD U	1.000 ea
HW3001B01	BRASS CUP WASHER, FOR #10 SCREW	1.000 ea
36EP1920A05	FREP TENV 206 BRG WD11/12 (STAINLESS)	1.000 ea
RM1070A42	O-RING,(#70-7.239) FLOUROELASTOMER COMPO	1.000 ea
HW4500S33	1/8 NPT STAINLESS #304 SS PLUG	4.000 ea
HW5100A06	W2420-025 WVY WSHR (WB)	1.000 ea
RM1006A03	GROMMET, #2867 1.12 HOLE (ATLANTIC INDIA	1.000 ea
36EP1925A02	PUEP 182-4TC ENCL 206 BRG WD11/12 STAINL	1.000 ea
RM1070A42	O-RING,(#70-7.239) FLOUROELASTOMER COMPO	1.000 ea
HW4600G02	30 X 47 X 8 LIP SEAL, GRAPHITE INFUSED V	1.000 ea
HW4600F25	30 X 48 X 4.5 AFX SEAL, GRAPHITE INFUSED	1.000 ea
HW4500S33	1/8 NPT STAINLESS #304 SS PLUG	4.000 ea
RM1070A14	O-RING, -010 VITON/FKM .070CS X .239ID	4.000 ea
35CB1513A01	35-36-37 MACH. LID - 3 PC. CONDUIT BOX	1.000 ea
RM1070A81	O-RING, -043 VITON/FKM .070CS X 3.489ID	1.000 ea
HW2502E16	#303 SS,SQ KEY 1/4 X 1.750	1.000 ea
MJ5001A27	32220KN GRAY SEALER *MIN BUY 4 QTS=1GAL	0.005 qt
MJ5004A93	FOOD GRADE (H1 RATED) ANTISEIZE THRD COM	0.005 ea
HA1025A21	WSHR,FELT .125" THK	1.000 ea
HA5027A09	DRAIN KIT,(2)HA4002A03 BAGGED W/LABEL	1.000 ea
MJ1000A02	GREASE, POLYREX EM EXXON	0.050 lb
WD5603A01	KIT, CLOSED-END LEAD SPLICE (18-14GA)	1.000 ea
HA3101FS55	THRUBOLT, 1/4-20 X 13.250 SS FOOD SAFE	4.000 ea
36PA1001	PKG GRP, PRINT PK1017A07	1.000 ea
PK3082	STYROFOAM CRADLE	1.000 ea
MN416A01	TAG-INSTAL-MAINT no wire (2500 bx)11/25	1.000 ea

FE-0000007	ZRTG FE ASSEMBLY	1.000 ea
PE-0000010	ZRTG PE ASSEMBLY	1.000 ea

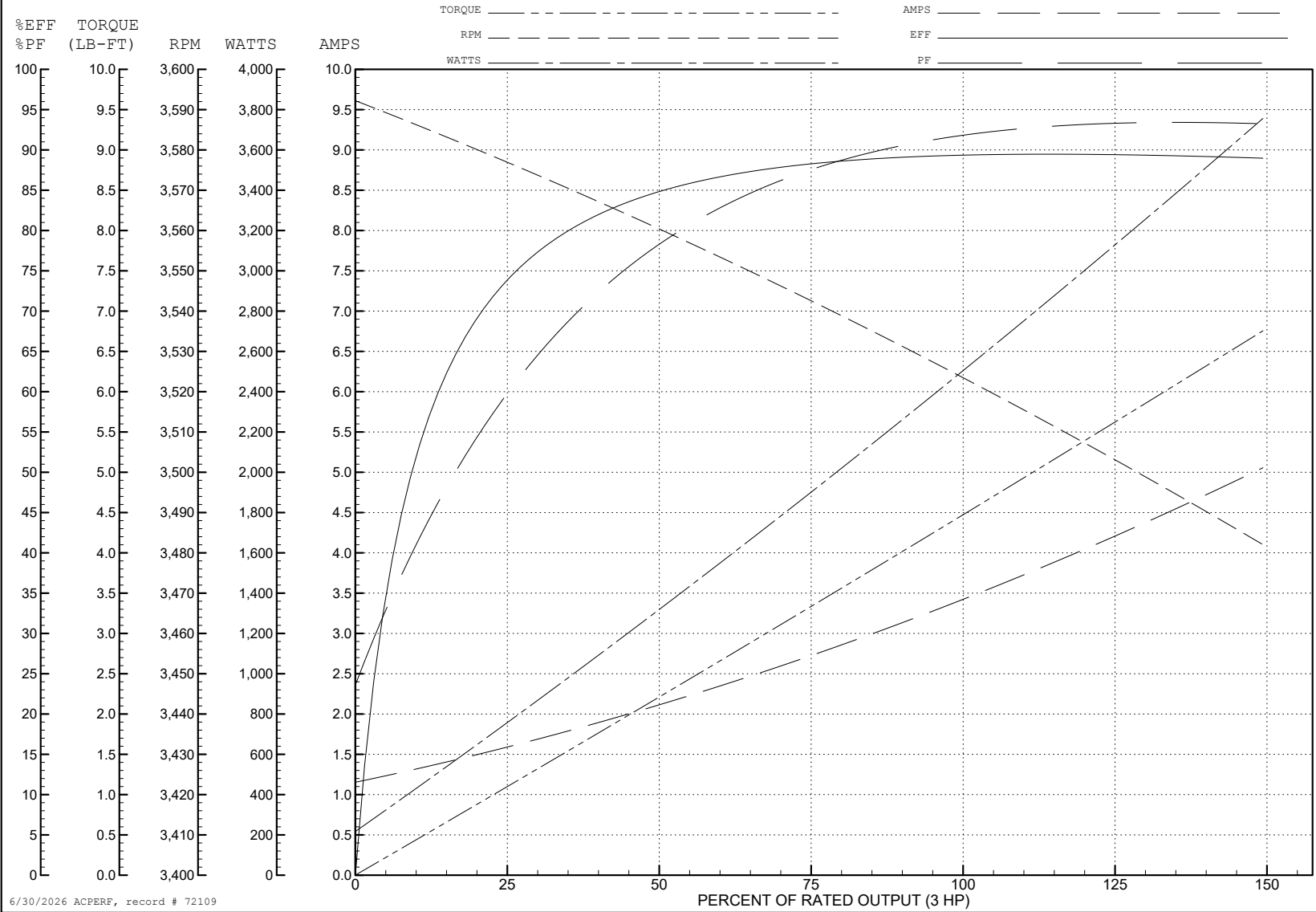
ABB Motors and Mechanical Inc.

WINDING # 36WGR690

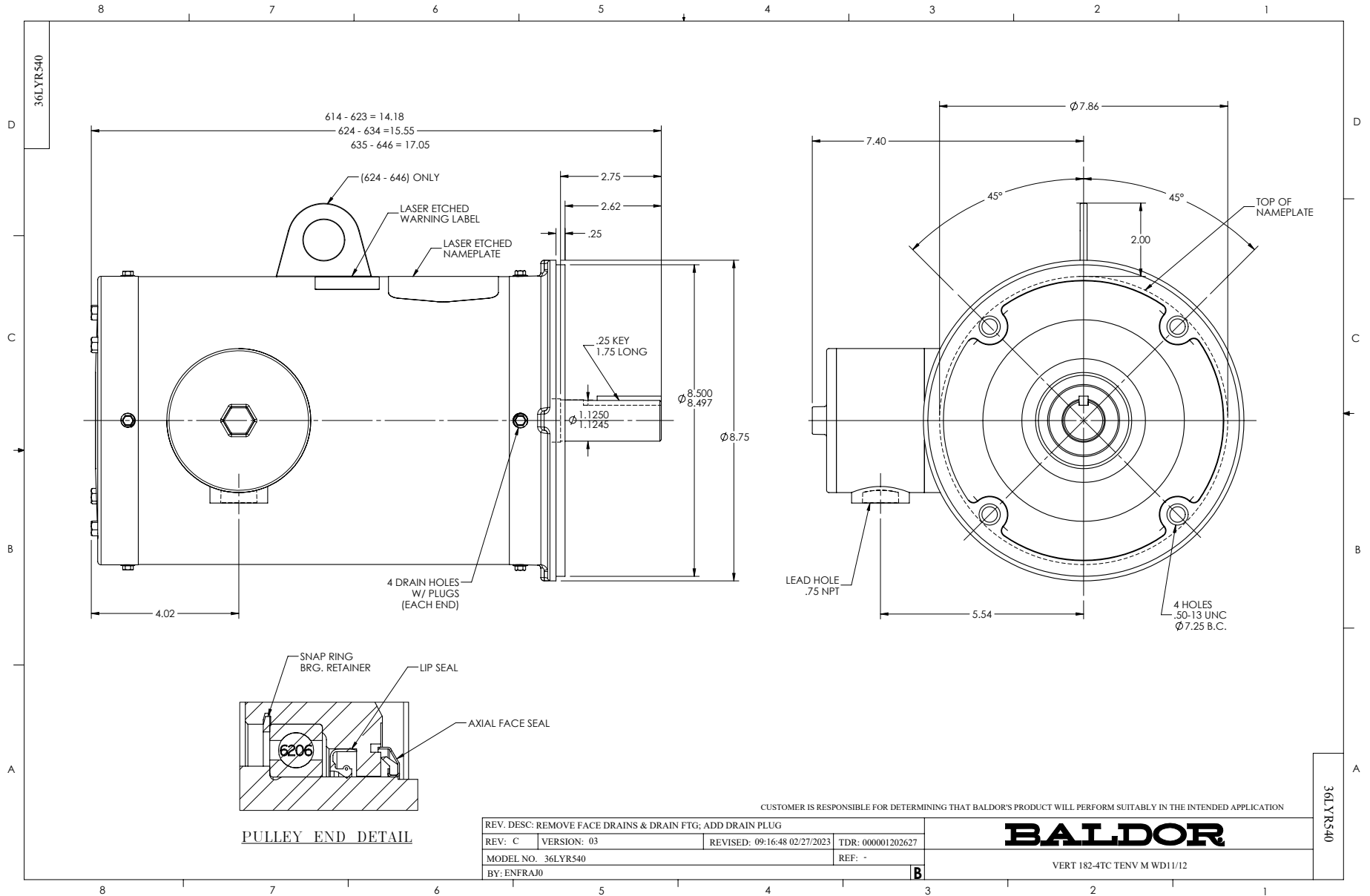
3 HP 3 PH 60 HZ 3500 RPM 460 V 3646M

Typical performance - not guaranteed values.

TORQUES (LB-FT): PO=29.7 PU=22 LR=27.7 LRA=51.1



6/30/2026 ACPERF, record # 72109



CD0005



LOW VOLTAGE
(2Y)



LINE

HIGH VOLTAGE
(1Y)



LINE

NOTES:

1. INTERCHANGE ANY TWO LINE LEADS TO REVERSE ROTATION.
2. OPTIONAL THERMOSTATS ARE PROVIDED WHEN SPECIFIED.
3. ACTUAL NUMBER OF INTERNAL PARALLEL CIRCUITS MAY BE A MULTIPLE OF THOSE SHOWN ABOVE.
4. LEAD COLORS ARE OPTIONAL. LEADS MUST ALWAYS BE NUMBERED AS SHOWN.

CD0005

REV. DESC: REVISE TO SHOW OPTIONAL COLORS

REV. LTR: E BY: JLP REVISED: 01/19/99 10:15 TDR: 0171435

500000

FILE: AAA00005140

MDL: -

MTL: -

BALDOR ELECTRIC Co.

3PH, DV, 9 LEADS