

BALDOR® • RELIANCE 

Product Information Packet

VM3559

3HP,3450RPM,3PH,60HZ,56C,3528M,TEFC,F1

Part Detail							
Revision:	AL	Status:	PRD/A	Change #:		Proprietary:	No
Type:	AC	Elec. Spec:	35WGT123	CD Diagram:	CD0005	Mfg Plant:	
Mech. Spec:	35A013	Layout:	35LYA013	Poles:	02	Created Date:	06-21-2007
Base:	N	Eff. Date:	07-28-2020	Leads:	9#18		

Specs			
Catalog Number:	VM3559	Heater Indicator:	No Heater
Enclosure:	TEFC	Insulation Class:	F
Frame:	56C	Inverter Code:	Not Inverter
Frame Material:	Steel	KVA Code:	K
Motor Letter Type:	Three Phase	Lifting Lugs:	No Lifting Lugs
Output @ Frequency:	3.000 HP @ 60 HZ	Locked Bearing Indicator:	Locked Bearing
Synchronous Speed @ Frequency:	3600 RPM @ 60 HZ	Motor Lead Quantity/Wire Size:	9 @ 18 AWG
Voltage @ Frequency:	208.0 V @ 60 HZ	Motor Lead Exit:	Ko Box
	230.0 V @ 60 HZ	Motor Lead Termination:	Flying Leads
	460.0 V @ 60 HZ	Motor Type:	3528M
XP Class and Group:	None	Mounting Arrangement:	F1
XP Division:	Not Applicable	Power Factor:	89
Agency Approvals:	UR	Product Family:	General Purpose
	CSA	Pulley End Bearing Type:	Ball
Auxillary Box:	No Auxillary Box	Pulley Face Code:	C-Face
Auxillary Box Lead Termination:	None	Pulley Shaft Indicator:	Standard
Base Indicator:	No Mounting	Rodent Screen:	None
Bearing Grease Type:	Polyrex EM (-20F +300F)	RoHS Status:	ROHS COMPLIANT

Blower:	None	Shaft Extension Location:	Pulley End
Current @ Voltage:	3.800 A @ 460.0 V	Shaft Ground Indicator:	No Shaft Grounding
	7.600 A @ 230.0 V	Shaft Rotation:	Reversible
	8.100 A @ 208.0 V	Shaft Slinger Indicator:	No Slinger
Design Code:	B	Speed Code:	Single Speed
Drip Cover:	No Drip Cover	Motor Standards:	NEMA
Duty Rating:	CONT	Starting Method:	Direct on line
Electrically Isolated Bearing:	Not Electrically Isolated	Thermal Device - Bearing:	None
Feedback Device:	NO FEEDBACK	Thermal Device - Winding:	None
Front Face Code:	Standard	Vibration Sensor Indicator:	No Vibration Sensor
Front Shaft Indicator:	None	Winding Thermal 1:	None
		Winding Thermal 2:	None

Nameplate NP1256L										
CAT.NO.	VM3559X									
SPEC.	35A13T123									
HP	3									
VOLTS	208-230/460									
AMP	8.1-7.6/3.8									
RPM	3450									
FRAME	56C				HZ	60			PH	3
SER.F.	1.15		CODE	K	DES	B		CLASS	F	
NEMA-NOM-EFF	82.5		PF	89						
RATING	40C AMB-CONT									
CC								USABLE AT 208V	8.1	
DE	6205				ODE	6203				
ENCL	TEFC		SN							
NOT FOR USE IN USA										

Parts List		
Part Number	Description	Quantity
SA023165	SA 35A13T123	1.000 EA
RA019215	RA 35A13T123	1.000 EA
NS2512A01	INSULATOR, CONDUIT BOX X	1.000 EA
35CB3007	35 CB CASTING W/.88 DIA. LEAD HOLE	1.000 EA
36GS1000SP	GASKET-CONDUIT BOX, .06 THICK #SV-330 LE	1.000 EA
51XB1016A07	10-16 X 7/16 HXWSSLD SERTYB	2.000 EA
11XW1032G06	10-32 X .38, TAPTITE II, HEX WSHR SLTD U	1.000 EA
35EP3122K00	MASTER ODE,203 BRG,.683SH,#26 DRN,FH MTG	1.000 EA
HW5100A03	WAVY WASHER (W1543-017)	1.000 EA
51XN1032A20	10-32 X 1 1/4 HX WS SL SR	2.000 EA
35EP3307F00	MASTER DE,205 BRG,.998SH,#26 DRN	1.000 EA
35FH4005A32SP	IEC FH NO GR SR W/3 HOLES - PRIMED	1.000 EA
51XW1032A06	10-32 X .38, TAPTITE II, HEX WSHR SLTD S	3.000 EA
35CB4521	35 LIPPED CB LID (GALV & PHOSPH)	1.000 EA
35GS1030	35 GS FOR CB LID - LEXIDE	1.000 EA
51XW0832A07	8-32 X .44, TAPTITE II, HEX WSHR SLTD SE	4.000 EA
85XU0407S04	4X1/4 U DRIVE PIN STAINLESS	2.000 EA
MJ1000A02	GREASE, POLYREX EM EXXON	0.050 LB
34FN3002B01	EXTERNAL FAN, PLASTIC, .637/.639 HUB W/	1.000 EA
MG1000G27	MED CHARCOAL METALLIC GREY 400-0096	0.017 GA
HA3100A15	THRUBOLT 10-32 X 8.375	4.000 EA
LB1417	LABEL CARTON 6X4 PERFORATED BLANK ROLLS	1.000 EA
LC0005E01	CONN.DIA./WARNING LABEL (LC0005/LB1119N)	1.000 EA
NP1256L	ALUM UL CSA CC INDUSTRIAL MOTOR A60	1.000 EA

Parts List (continued)		
Part Number	Description	Quantity
36PA1000	PKG GRP, PRINT PK1016A06	1.000 EA
PK3083	STYROFOAM PACKING CRADLE	1.000 EA
MN416A01	TAG-INSTAL-MAINT no wire (2200bx) 4/22	1.000 EA
PK3088	MICROFOAM, 8"X"8 PERF. SHEETS	1.000 EA

AC Induction Motor Performance Data

Record # 16432

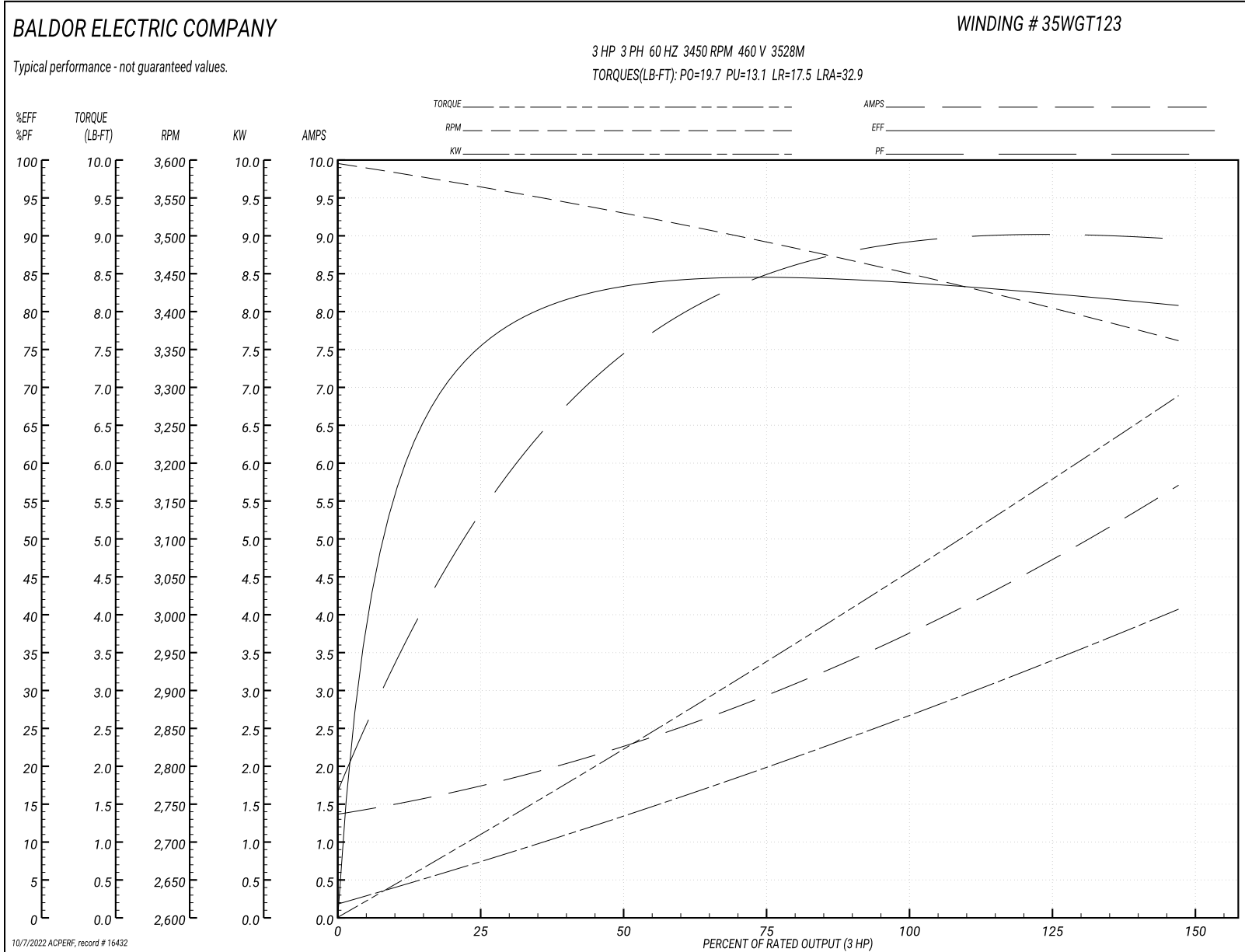
Typical performance - not guaranteed values

Winding: 35WGT123-R001		Type: 3528M	Enclosure: TEFC	
Nameplate Data			460 V, 60 Hz: High Voltage Connection	
Rated Output (HP)	3	Full Load Torque	4.6 LB-FT	
Volts	208-230/460	Start Configuration	direct on line	
Full Load Amps	8.1-7.6/3.8	Breakdown Torque	19.7 LB-FT	
R.P.M.	3450	Pull-up Torque	13.1 LB-FT	
Hz	60 Phase	Locked-rotor Torque	17.5 LB-FT	
NEMA Design Code	B KVA Code	Starting Current	32.9 A	
Service Factor (S.F.)	1.15	No-load Current	1.4 A	
NEMA Nom. Eff.	82.5 Power Factor	Line-line Res. @ 25°C	5.1 Ω	
Rating - Duty	40C AMB-CONT	Temp. Rise @ Rated Load	68°C	
S.F. Amps		Temp. Rise @ S.F. Load	82°C	
		Locked-rotor Power Factor	49	
		Rotor inertia	0.0774 LB-FT ²	

Load Characteristics 460 V, 60 Hz, 3 HP

% of Rated Load	25	50	75	100	125	150	S.F.
Power Factor	55	74	83	87	88	88	88
Efficiency	76	83	84.3	84	82.7	80.6	83.2
Speed	3559	3525	3490	3452	3409	3358	3426
Line amperes	1.7	2.3	3	3.8	4.7	5.7	4.3

Performance Graph at 460V, 60Hz, 3.0HP Typical performance - Not guaranteed values



AC Induction Motor Performance Data

Record # 20988

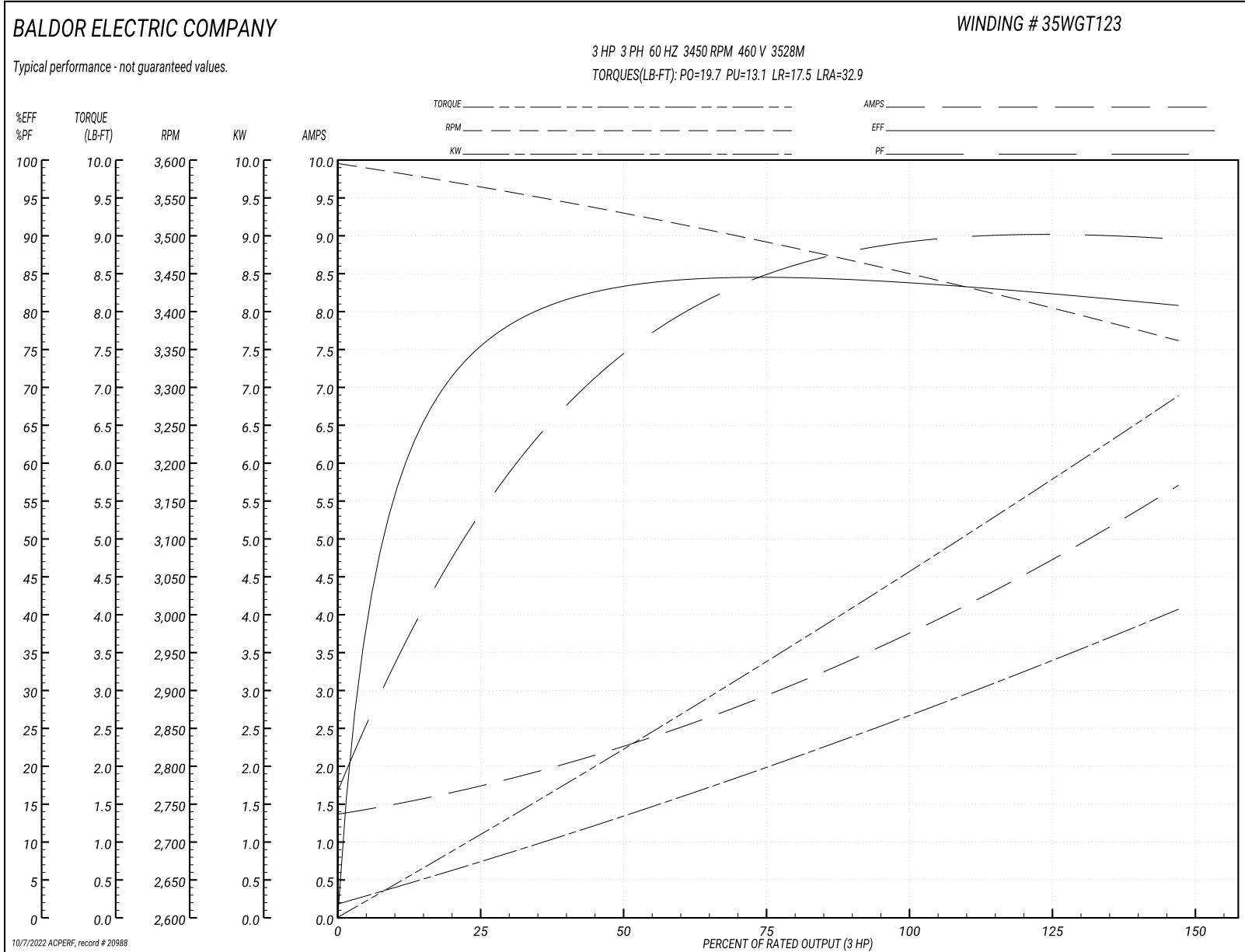
Typical performance - not guaranteed values

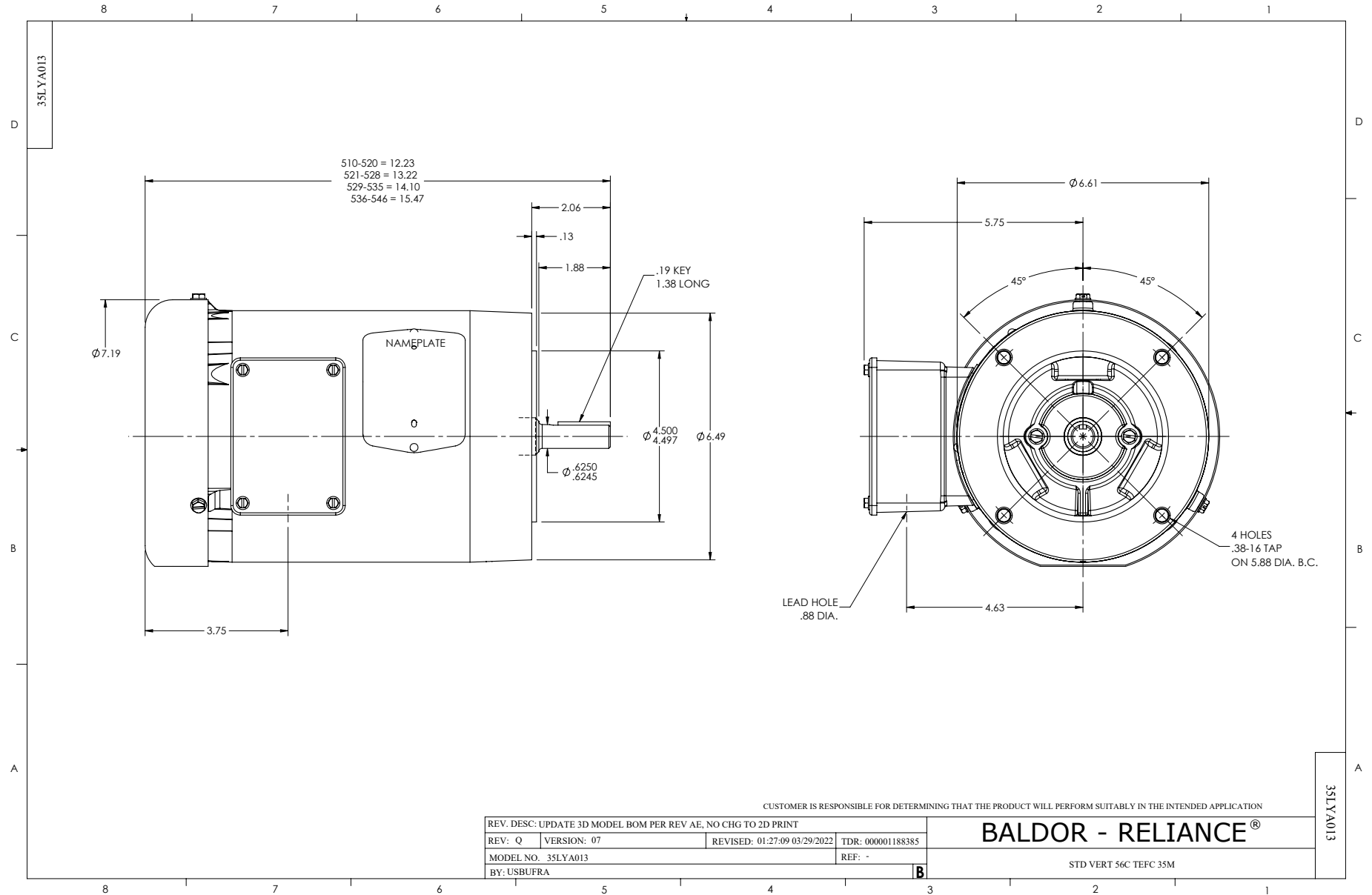
Winding: 35WGT123-R004			Type: 3528M			Enclosure: TEFC			
Nameplate Data				460 V, 60 Hz: High Voltage Connection					
Rated Output (HP)		3	Full Load Torque					4.6 LB-FT	
Volts		208-230/460	Start Configuration					direct on line	
Full Load Amps		8.1-7.6/3.8	Breakdown Torque					19.7 LB-FT	
R.P.M.		3450	Pull-up Torque					13.1 LB-FT	
Hz	60 Phase	3	Locked-rotor Torque					17.5 LB-FT	
NEMA Design Code	B	KVA Code	K	Starting Current					32.9 A
Service Factor (S.F.)		1.15	No-load Current					1.4 A	
NEMA Nom. Eff.	82.5	Power Factor	89	Line-line Res. @ 25°C					5.1 Ω
Rating - Duty		40C	AMB-CONT	Temp. Rise @ Rated Load					68°C
S.F. Amps				Temp. Rise @ S.F. Load					82°C
				Locked-rotor Power Factor					49
				Rotor inertia					0.0774 LB-FT ²

Load Characteristics 460 V, 60 Hz, 3 HP

% of Rated Load	25	50	75	100	125	150	S.F.
Power Factor	55	74	83	87	88	88	88
Efficiency	76	83	84.3	84	82.7	80.6	83.2
Speed	3559	3525	3490	3452	3409	3358	3426
Line amperes	1.7	2.3	3	3.8	4.7	5.7	4.3

Performance Graph at 460V, 60Hz, 3.0HP Typical performance - Not guaranteed values





CD0005

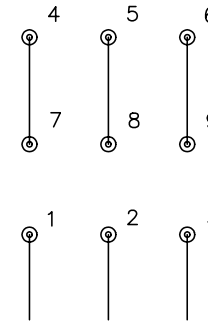


LOW VOLTAGE
(2Y)



LINE

HIGH VOLTAGE
(1Y)



LINE

NOTES:

1. INTERCHANGE ANY TWO LINE LEADS TO REVERSE ROTATION.
2. OPTIONAL THERMOSTATS ARE PROVIDED WHEN SPECIFIED.
3. ACTUAL NUMBER OF INTERNAL PARALLEL CIRCUITS MAY BE A MULTIPLE OF THOSE SHOWN ABOVE.
4. LEAD COLORS ARE OPTIONAL. LEADS MUST ALWAYS BE NUMBERED AS SHOWN.

REV. DESC: REVISE TO SHOW OPTIONAL COLORS			
REV. LTR: E	BY: JLP	REVISED: 01/19/99 10:15	TDR: 0171435
900000		FILE: AAA00005140	MDL: -
		MTL: -	

BALDOR ELECTRIC Co.

3PH, DV, 9 LEADS

CD0005