

**BALDOR® • RELIANCE** 

**Product Information Packet**

**XL040342A**

**.33HP, 1725RPM, 1PH, 60HZ, 48, 3414L, XPFC, F1**

| Part Detail |    |             |            |             |        |               |            |
|-------------|----|-------------|------------|-------------|--------|---------------|------------|
| Revision:   | C  | Status:     | PRD/A      | Change #:   |        | Proprietary:  | No         |
| Type:       | AC | Elec. Spec: | 34WG5597   | CD Diagram: | CD0565 | Mfg Plant:    |            |
| Mech. Spec: |    | Layout:     | 34LY6414   | Poles:      | 04     | Created Date: | 04-21-2021 |
| Base:       |    | Eff. Date:  | 07-01-2022 | Leads:      | 7#18   |               |            |

| Specs                           |                          |                           |                          |
|---------------------------------|--------------------------|---------------------------|--------------------------|
| Catalog Number:                 | XL040342A                | Feedback Device:          | NO FEEDBACK              |
| Enclosure:                      | XPFC                     | Heater Indicator:         | No Heater                |
| Frame:                          | 48                       | Insulation Class:         | B                        |
| Frame Material:                 | Steel                    | Inverter Code:            | Not Inverter             |
| Motor Letter Type:              | Cap Start, Induction Run | IP Rating:                | NONE                     |
| Output @ Frequency:             | .330 HP @ 60 HZ          | KVA Code:                 | L                        |
| Synchronous Speed @ Frequency:  | 1800 RPM @ 60 HZ         | Lifting Lugs:             | No Lifting Lugs          |
| Voltage @ Frequency:            | 208.0 V @ 60 HZ          | Locked Bearing Indicator: | No Locked Bearing        |
|                                 | 115.0 V @ 60 HZ          | Motor Lead Termination:   | Flying Leads             |
|                                 | 230.0 V @ 60 HZ          | Motor Type:               | 3414L                    |
| XP Class and Group:             | CLI GP D; CLII GP F,G    | Mounting Arrangement:     | F1                       |
| XP Division:                    | Division I               | Power Factor:             | 60                       |
| Agency Approvals:               | CSA                      | Product Family:           | Hazardous Location Motor |
|                                 | UR                       | Pulley Face Code:         | Standard                 |
| Auxillary Box:                  | No Auxillary Box         | Rodent Screen:            | None                     |
| Auxillary Box Lead Termination: | None                     | Shaft Ground Indicator:   | No Shaft Grounding       |
| Base Indicator:                 | Rigid                    | Shaft Rotation:           | Reversible               |
| Bearing Grease Type:            | Polyrex EM (-20F +300F)  | Speed Code:               | Single Speed             |

|                                       |                           |                                    |                            |
|---------------------------------------|---------------------------|------------------------------------|----------------------------|
| <b>Blower:</b>                        | None                      | <b>Motor Standards:</b>            | NEMA                       |
| <b>Current @ Voltage:</b>             | 6.000 A @ 115.0 V         | <b>Starting Method:</b>            | Direct on line             |
|                                       | 3.200 A @ 208.0 V         | <b>Thermal Device - Bearing:</b>   | None                       |
|                                       | 3.000 A @ 230.0 V         | <b>Thermal Device - Winding:</b>   | None                       |
| <b>Design Code:</b>                   | N                         | <b>Vibration Sensor Indicator:</b> | No Vibration Sensor        |
| <b>Drip Cover:</b>                    | No Drip Cover             | <b>Winding Thermal 1:</b>          | Automatic Thermal Overload |
| <b>Duty Rating:</b>                   | CONT                      | <b>Winding Thermal 1 Location:</b> | ES                         |
| <b>Electrically Isolated Bearing:</b> | Not Electrically Isolated | <b>Winding Thermal 2:</b>          | None                       |
|                                       |                           | <b>XP Temp Code:</b>               | T3C                        |

| Nameplate NP0016XPSL |                        |               |     |       |   |  |  |  |  |  |
|----------------------|------------------------|---------------|-----|-------|---|--|--|--|--|--|
| NO.                  |                        | CC            |     |       |   |  |  |  |  |  |
| SER. #               |                        |               |     |       |   |  |  |  |  |  |
| SPEC                 | 34-0000-0414           |               |     |       |   |  |  |  |  |  |
| CAT.NO.              | XL040342A              |               |     |       |   |  |  |  |  |  |
| H.P.                 | .33                    | T. CODE       | T3C |       |   |  |  |  |  |  |
| VOLTS                | 115/208-230            |               |     |       |   |  |  |  |  |  |
| AMPS                 | 6/3.2-3                |               |     |       |   |  |  |  |  |  |
| R.P.M.               | 1725 34WG5597          |               |     |       |   |  |  |  |  |  |
| HZ                   | 60                     | PH            | 1   | CLASS | B |  |  |  |  |  |
| SER.F.               | 1.00                   | DES           | N   | CODE  | L |  |  |  |  |  |
| RATING               | 40C AMB-CONT           |               |     |       |   |  |  |  |  |  |
| FRAME                | 48                     | NEMA NOM. EFF | 60  |       |   |  |  |  |  |  |
| USABLE AT 208V       |                        | PF            | 60  |       |   |  |  |  |  |  |
| BLANK                | NEMA MG-1 PART 5, IP54 |               |     |       |   |  |  |  |  |  |

| Parts List    |  |          |
|---------------|--|----------|
| Part Number   | Description                              | Quantity |
| SA392992      | SA 34-0000-0414                          | 1.000 EA |
| RA383603      | RA 34-0000-0414                          | 1.000 EA |
| LB1118        | LABEL,WARNING (ROLL LABEL)               | 1.000 EA |
| LC0008        | CONNECTION LABEL                         | 1.000 EA |
| NP0016XPSL    | SS XP UL CSA CC CL-I GP-D CL-II GP-F&G   | 1.000 EA |
| 85XU0407S04   | 4X1/4 U DRIVE PIN STAINLESS              | 2.000 EA |
| 85XU0407S04   | 4X1/4 U DRIVE PIN STAINLESS              | 4.000 EA |
| MN416A01      | TAG-INSTAL-MAINT no wire (2200bx) 4/22   | 1.000 EA |
| NP0018W       | ALUM UL XP CONDUIT BOX NAMEPLATE         | 1.000 EA |
| TPMRG57BV     | THERMAL 1PH 0.75 AUT 105C                | 1.000 EA |
| 51XT0632A06   | 6-32X3/8 TY F HEX HD SLT                 | 1.000 EA |
| HA6001A01     | THERMAL RETAINER (PLATED)                | 1.000 EA |
| NS2500A06     | INSULATOR,AUTO THER PROT,W/PSA ON 1 SIDE | 1.000 EA |
| 34FH4002A01SP | IEC FH NO GREASER PRIMED                 | 1.000 EA |
| 51XW1032A06   | 10-32 X .38, TAPTITE II, HEX WSHR SLTD S | 3.000 EA |
| 34FN3002A01SP | EXTERNAL FAN, PLASTIC, .637/.639 HUB W/  | 1.000 EA |
| HA3104A05     | THRUBOLT, 5/16-18 X 8.375                | 4.000 EA |
| SP5036A01     | STAT. SWITCH ASSY. MODEL 34 TYPE L OR S  | 1.000 EA |
| XY3118A12     | 5/16-18 HEX NUT DIRECTIONAL SERRATION    | 4.000 EA |
| 34EP3703A01   | FR ENDPLATE, MACH XP                     | 1.000 EA |
| HW5100A03     | WAVY WASHER (W1543-017)                  | 1.000 EA |
| 34EP3704A01   | PU ENDPLATE, MACH XP                     | 1.000 EA |
| 35CB3001A01SP | EXPL CONDUIT BOX, MACH, 1/2" PIPE TAP LE | 1.000 EA |
| 11XW1032G06   | 10-32 X .38, TAPTITE II, HEX WSHR SLTD U | 1.000 EA |

| <b>Parts List (continued)</b> |  |                 |
|-------------------------------|--|-----------------|
| <b>Part Number</b>            | <b>Description</b>                       | <b>Quantity</b> |
| HW4002A02                     | 1-11.5X2LG PIPE NIPPLE (F/S)             | 1.000 EA        |
| 35CB3500A01SP                 | CONDUIT BOX LID, MACH                    | 1.000 EA        |
| 51XN2520A16                   | SCREW, HEX WS SLT, ZN, 1/4-20 X 1.00     | 4.000 EA        |
| HA6003A52                     | CLAMP, CAPACITOR, WHITE ZINC PLATED      | 2.000 EA        |
| 51XW0832A07                   | 8-32 X .44, TAPTITE II, HEX WSHR SLTD SE | 2.000 EA        |
| HA1025A13                     | WSHR,FELT,.38" THICK F-26 CLASS          | 1.000 EA        |
| HW3021E06                     | 1/8 DIA X 5/8 ROLLPIN (F/S)              | 1.000 EA        |
| WD1000A16                     | 2-520128-2 AMP FLAG TERMINAL(4M/RL)      | 8.000 EA        |
| EC1108A08                     | ELEC CAP, 108-130 MFD, 125V, 1.13D X 2.  | 1.000 EA        |
| EC1088A08                     | ELEC CAP 115V 1.125X2.750 X              | 1.000 EA        |
| WD1000A16                     | 2-520128-2 AMP FLAG TERMINAL(4M/RL)      | 6.000 EA        |
| WD1000A16                     | 2-520128-2 AMP FLAG TERMINAL(4M/RL)      | 5.000 EA        |
| MG1025G29                     | WILKOFAS, 789.229, DARK CHARCOAL GRAY    | 0.014 GA        |
| 36PA1000                      | PKG GRP, PRINT PK1016A06                 | 1.000 EA        |
| MJ5000A09                     | EFI KIT #1578 (400 ML CARTRIDGE OF EFI   | 0.031 EA        |

**AC Induction Motor Performance Data**

Record # 6785

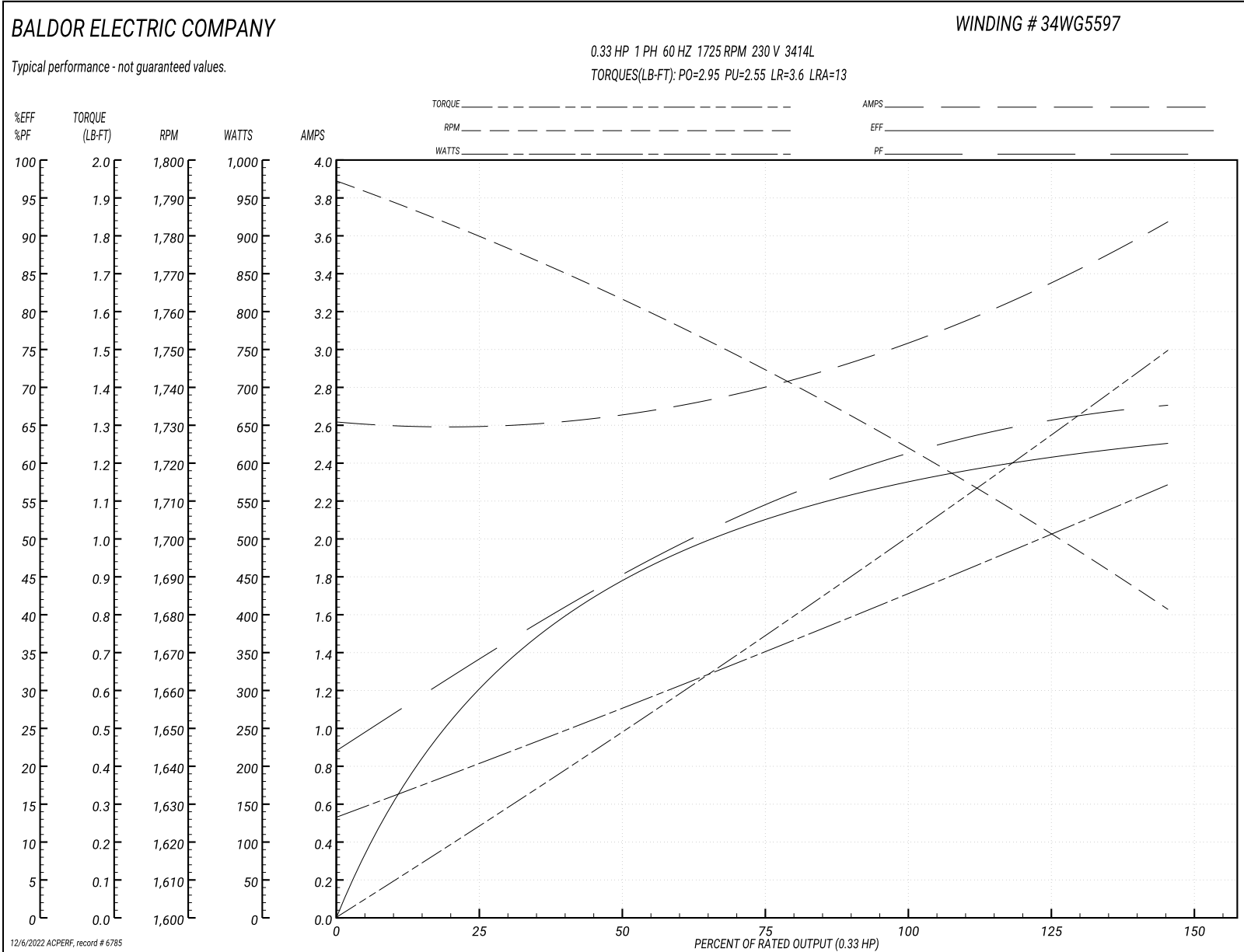
Typical performance - not guaranteed values

| <b>Winding:</b> 34WG5597-R002 |                        | <b>Type:</b> 3414L |  | <b>Enclosure:</b> XPFC     |  |
|-------------------------------|------------------------|--------------------|--|----------------------------|--|
| <b>Nameplate Data</b>         |                        |                    | <b>230 V, 60 Hz:<br/>High Voltage Connection</b> |                            |  |
| <b>Rated Output (HP)</b>      | .33                    |                    | <b>Full Load Torque</b>                          | 1 LB-FT                    |  |
| <b>Volts</b>                  | 115/208-230            |                    | <b>Start Configuration</b>                       | direct on line             |  |
| <b>Full Load Amps</b>         | 6/3.2-3                |                    | <b>Breakdown Torque</b>                          | 2.95 LB-FT                 |  |
| <b>R.P.M.</b>                 | 1725                   |                    | <b>Pull-up Torque</b>                            | 2.55 LB-FT                 |  |
| <b>Hz</b>                     | <b>60 Phase</b>        | 1                  | <b>Locked-rotor Torque</b>                       | 3.6 LB-FT                  |  |
| <b>NEMA Design Code</b>       | <b>N KVA Code</b>      | L                  | <b>Starting Current</b>                          | 13 A                       |  |
| <b>Service Factor (S.F.)</b>  | 1                      |                    | <b>No-load Current</b>                           | 2.6 A                      |  |
| <b>NEMA Nom. Eff.</b>         | <b>60 Power Factor</b> | 60                 | <b>Line-line Res. @ 25°C</b>                     | 6.32 Ω A Ph<br>4.93 Ω B Ph |  |
| <b>Rating - Duty</b>          | 40C AMB-CONT           |                    | <b>Temp. Rise @ Rated Load</b>                   | 59°C                       |  |

**Load Characteristics 230 V, 60 Hz, 0.33 HP**

| <b>% of Rated Load</b> | <b>25</b> | <b>50</b> | <b>75</b> | <b>100</b> | <b>125</b> | <b>150</b> |
|------------------------|-----------|-----------|-----------|------------|------------|------------|
| <b>Power Factor</b>    | 31        | 41        | 52        | 60         | 67         | 73         |
| <b>Efficiency</b>      | 33        | 41        | 52        | 60         | 61.5       | 61.5       |
| <b>Speed</b>           | 1780      | 1760      | 1745      | 1725       | 1705       | 1680       |
| <b>Line amperes</b>    | 2.6       | 2.7       | 2.8       | 3          | 3.3        | 3.7        |

Performance Graph at 230V, 60Hz, 0.33HP Typical performance - Not guaranteed values





**AC Induction Motor Performance Data**

Record # 39599

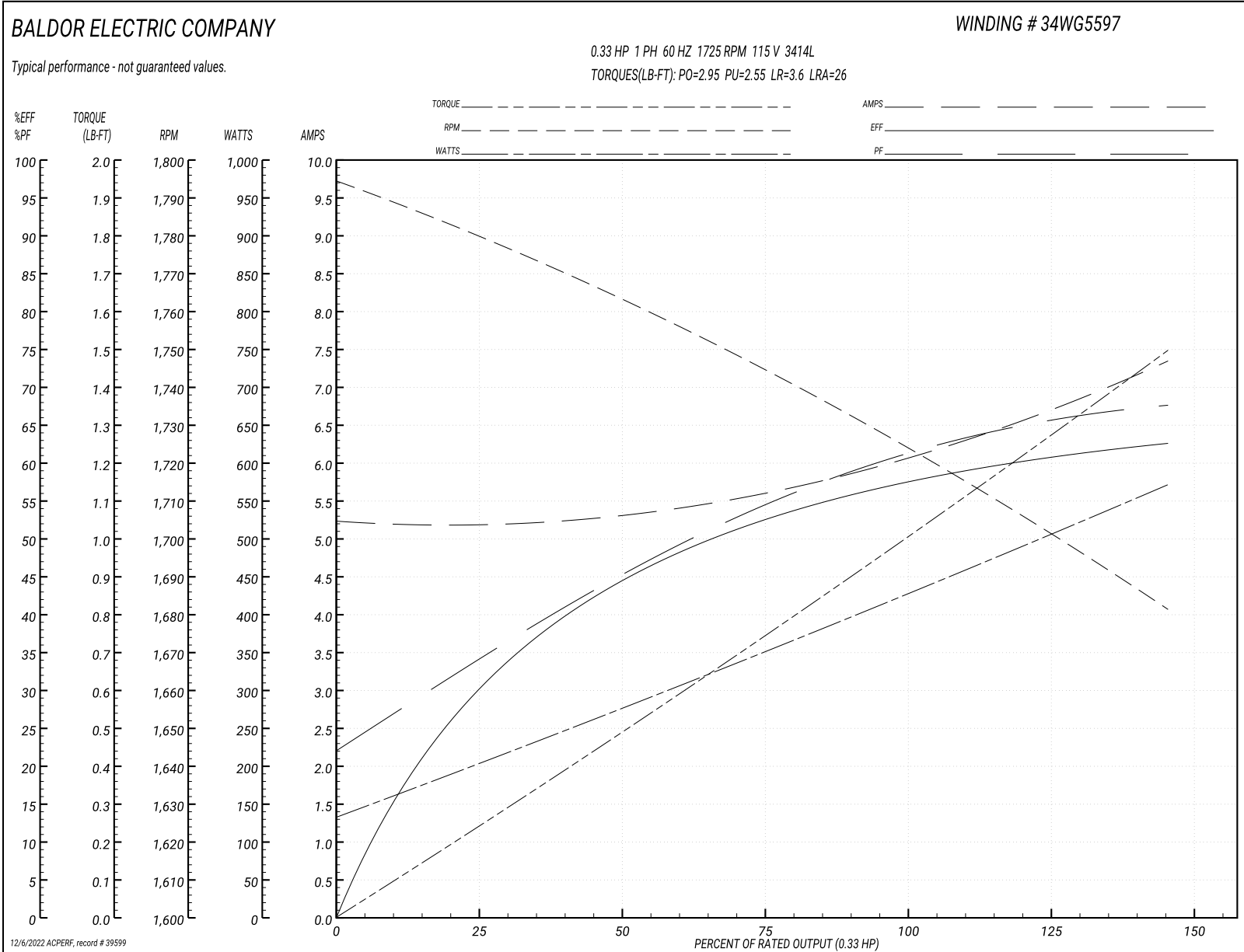
Typical performance - not guaranteed values

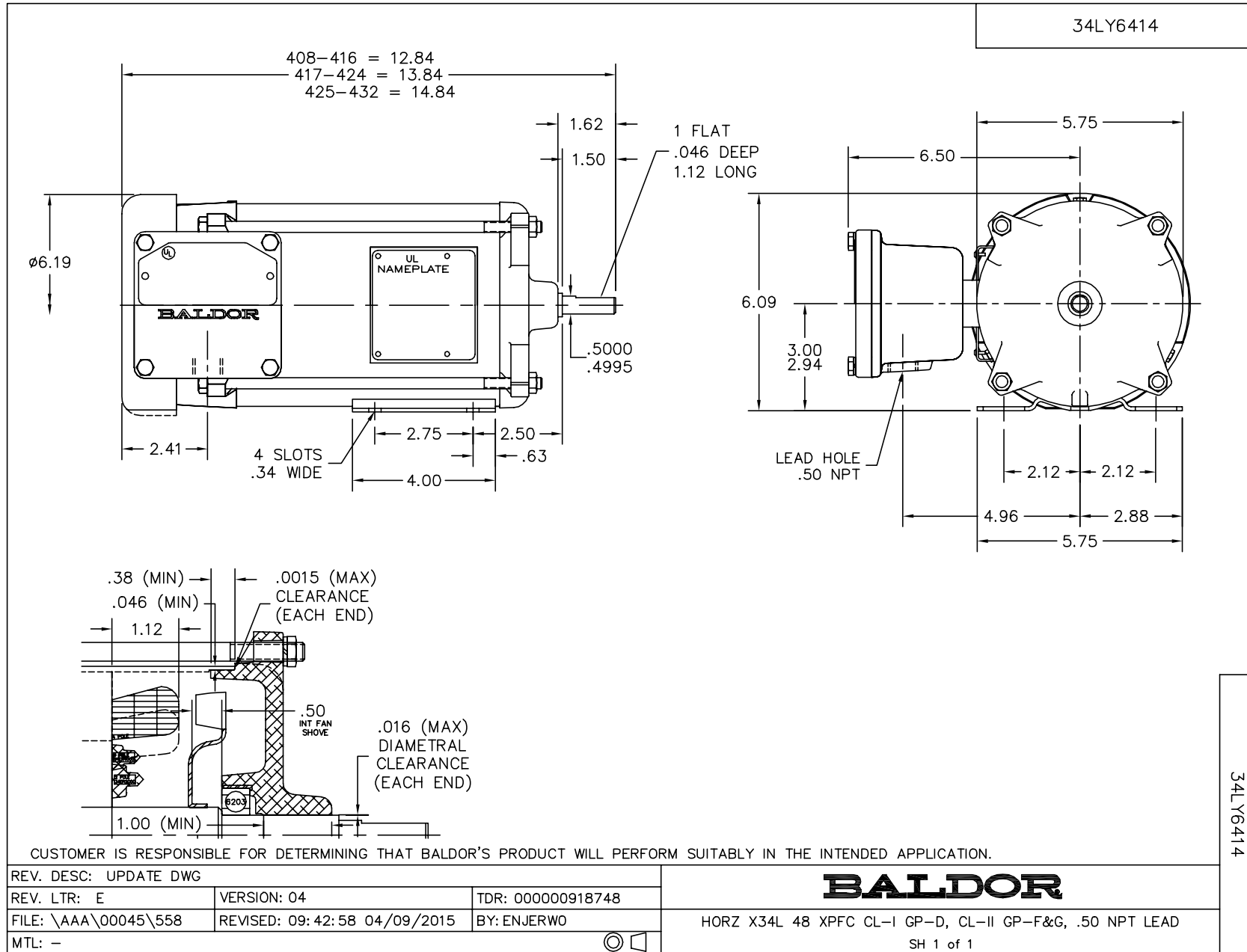
| <b>Winding:</b> 34WG5597-R002 |                        | <b>Type:</b> 3414L |   | <b>Enclosure:</b> XPFC    |  |
|-------------------------------|------------------------|--------------------|---|---------------------------|--|
| <b>Nameplate Data</b>         |                        |                    | <b>115 V, 60 Hz:<br/>Low Voltage Connection</b> |                           |  |
| <b>Rated Output (HP)</b>      | .33                    |                    | <b>Full Load Torque</b>                         | 1 LB-FT                   |  |
| <b>Volts</b>                  | 115/208-230            |                    | <b>Start Configuration</b>                      | direct on line            |  |
| <b>Full Load Amps</b>         | 6/3.2-3                |                    | <b>Breakdown Torque</b>                         | 2.95 LB-FT                |  |
| <b>R.P.M.</b>                 | 1725                   |                    | <b>Pull-up Torque</b>                           | 2.55 LB-FT                |  |
| <b>Hz</b>                     | <b>60 Phase</b>        | 1                  | <b>Locked-rotor Torque</b>                      | 3.6 LB-FT                 |  |
| <b>NEMA Design Code</b>       | <b>N KVA Code</b>      | L                  | <b>Starting Current</b>                         | 26 A                      |  |
| <b>Service Factor (S.F.)</b>  | 1                      |                    | <b>No-load Current</b>                          | 5.2 A                     |  |
| <b>NEMA Nom. Eff.</b>         | <b>60 Power Factor</b> | 60                 | <b>Line-line Res. @ 25°C</b>                    | 1.5 Ω A Ph<br>4.81 Ω B Ph |  |
| <b>Rating - Duty</b>          | 40C AMB-CONT           |                    | <b>Temp. Rise @ Rated Load</b>                  | 59°C                      |  |

**Load Characteristics 115 V, 60 Hz, 0.33 HP**

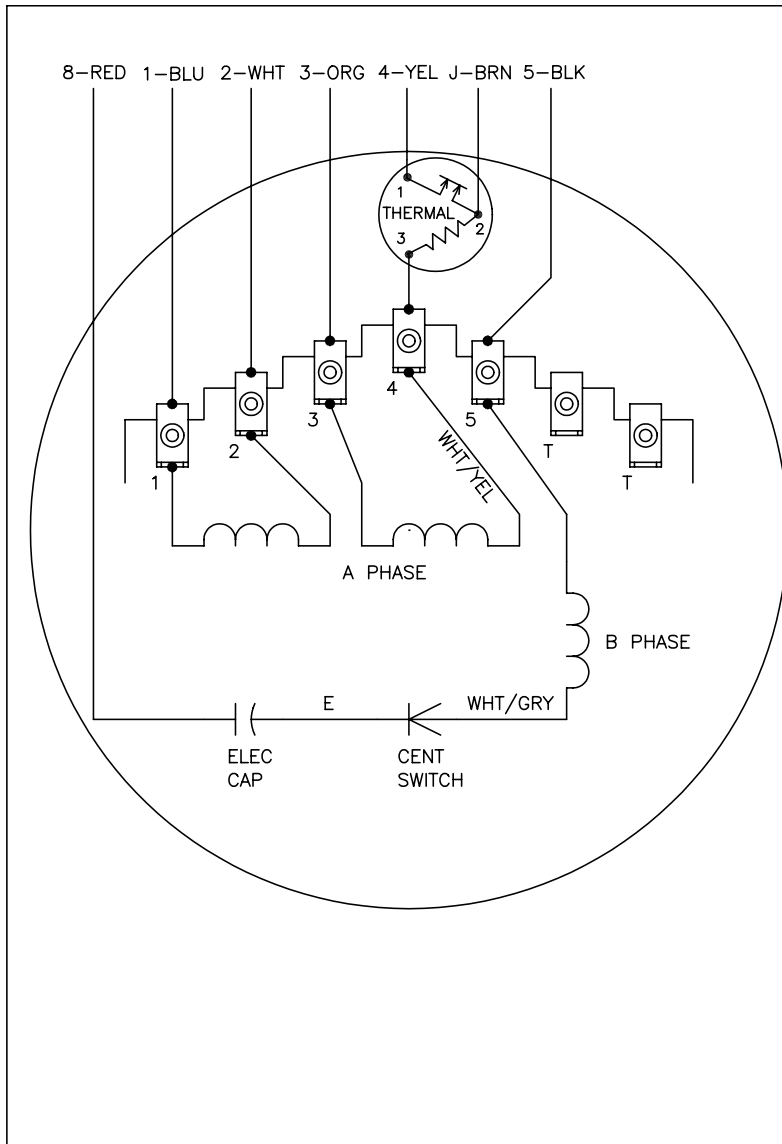
| <b>% of Rated Load</b> | <b>25</b> | <b>50</b> | <b>75</b> | <b>100</b> | <b>125</b> | <b>150</b> |
|------------------------|-----------|-----------|-----------|------------|------------|------------|
| <b>Power Factor</b>    | 32        | 49        | 55        | 59         | 65         | 68         |
| <b>Efficiency</b>      | 32.9      | 41        | 52.1      | 60.1       | 61.6       | 61.5       |
| <b>Speed</b>           | 1780      | 1760      | 1745      | 1725       | 1705       | 1680       |
| <b>Line amperes</b>    | 5.2       | 5.4       | 5.6       | 6          | 6.6        | 7.4        |

Performance Graph at 115V, 60Hz, 0.33HP Typical performance - Not guaranteed values





CD0565

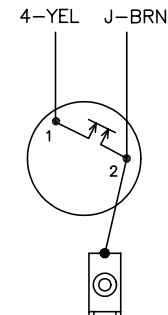


|          | LINE A | LINE B | JOIN  | JOIN  |
|----------|--------|--------|-------|-------|
| HIGH STD | 1      | 4      | 2,3,8 | J,5   |
| HIGH OPP | 1      | 4      | 2,3,5 | J,8   |
| LOW STD  | 1,3,8  | 4      | -     | 2,J,5 |
| LOW OPP  | 1,3,5  | 4      | -     | 2,J,8 |

NOTES:

1. STANDARD ROTATION IS CCW FACING END OPPOSITE SHAFT EXTENSION.
2. MULTIPLE CAPACITORS ARE CONNECTED IN PARALLEL UNLESS OTHERWISE SPECIFIED.
3. LEAD COLORS ARE OPTIONAL. LEADS MUST ALWAYS BE NUMBERED AS SHOWN.

CONNECTIONS FOR TWO-TERMINAL THERMAL



|   |         |                        |              |
|---|---------|------------------------|--------------|
| REV. DESC: REVISE TO SHOW OPTIONAL COLORS |         |                        |              |
| REV. LTR: C                               | BY: JLP | REVISED: 04/08/99 3:25 | TDR: 0178636 |
| 99000                                     |         | FILE: AAA00014311      | MDL: -       |
|   |         | MTL: -                 |              |

**BALDOR ELECTRIC Co.**

TYPE L, DV, REV, THERMAL, 7 LD, 34XP

CD0565

Marketing maintained PDF of MN416:

<http://www.baldor.com/support/Literature/Load.ashx/MN416?ManNumber=MN416>