



Customer information packet

ZDWNM22938T

10HP, 1765RPM, 3PH, 60HZ, 254TC, 3956M, TENV

Class -

Division - Not Applicable

Specifications

Enclosure	TENV
Frame	254TC
Frame Material	Steel
Frequency	60.00 Hz
Haz Area Division	Not Applicable
Motor Letter Type	Three Phase
Output @ Frequency	10.000 HP @ 60 HZ
Phase	3
Synchronous Speed @ Frequency	1800 RPM @ 60 HZ
Voltage @ Frequency	460.0 V @ 60 HZ 230.0 V @ 60 HZ
Agency Approvals	CSA UR
Ambient Temperature	40 °C
Auxillary Box	No Auxillary Box
Auxillary Box Lead Termination	None
Base Indicator	Rigid
Bearing Grease Type	Polyrex EM (-20F +300F)
Blower	None
Current @ Voltage	12.000 A @ 460.0 V 24.000 A @ 230.0 V
Design Code	B
Drip Cover	No Drip Cover
Duty Rating	CONT
Efficiency @ 100% Load	91.7 %
Electrically Isolated Bearing	Not Electrically Isolated
Feedback Device	ENCODER
Front Face Code	Encoder/Feedback Device
Front Shaft Indicator	None
Heater Indicator	No Heater
High Voltage Full Load Amps	12.0 a
Insulation Class	H

Part detail

Revision	AD
Type	AC
Mech. spec.	39S001
Base	
Status	PRD/A
Elec. spec.	39WGW632
Layout	39LYS001
Eff. date	11-14-2023
CD Diagram	CD0005
Poles	04
Leads	9#12
Proprietary	False
Created date	01-01-0001

Inverter Code	Inverter Duty
KVA Code	H
Lifting Lugs	Standard Lifting Lugs
Locked Bearing Indicator	Locked Bearing
Max Speed	5000 rpm
Motor Lead Exit	Ko Box
Motor Lead Quantity/Wire Size	9 @ 12 AWG
Motor Lead Termination	Flying Leads
Motor Standards	NEMA
Motor Type	3956M
Mounting Arrangement	F1
Number of Poles	4
Overall Length	23.92 IN
Power Factor	85
Product Family	Wash Down
Pulley End Bearing Type	Sealed Bearing
Pulley Face Code	C-Face
Pulley Shaft Indicator	Standard
Rodent Screen	None
Service Factor	1.00
Shaft Diameter	1.625 IN
Shaft Extension Location	Pulley End
Shaft Ground Indicator	No Shaft Grounding
Shaft Rotation	Reversible
Shaft Slinger Indicator	Shaft Slinger
Speed	1765 rpm
Speed Code	Single Speed
Starting Method	Direct on line
Thermal Device - Bearing	None
Thermal Device - Winding	Normally Closed Thermostat
Vibration Sensor Indicator	No Vibration Sensor

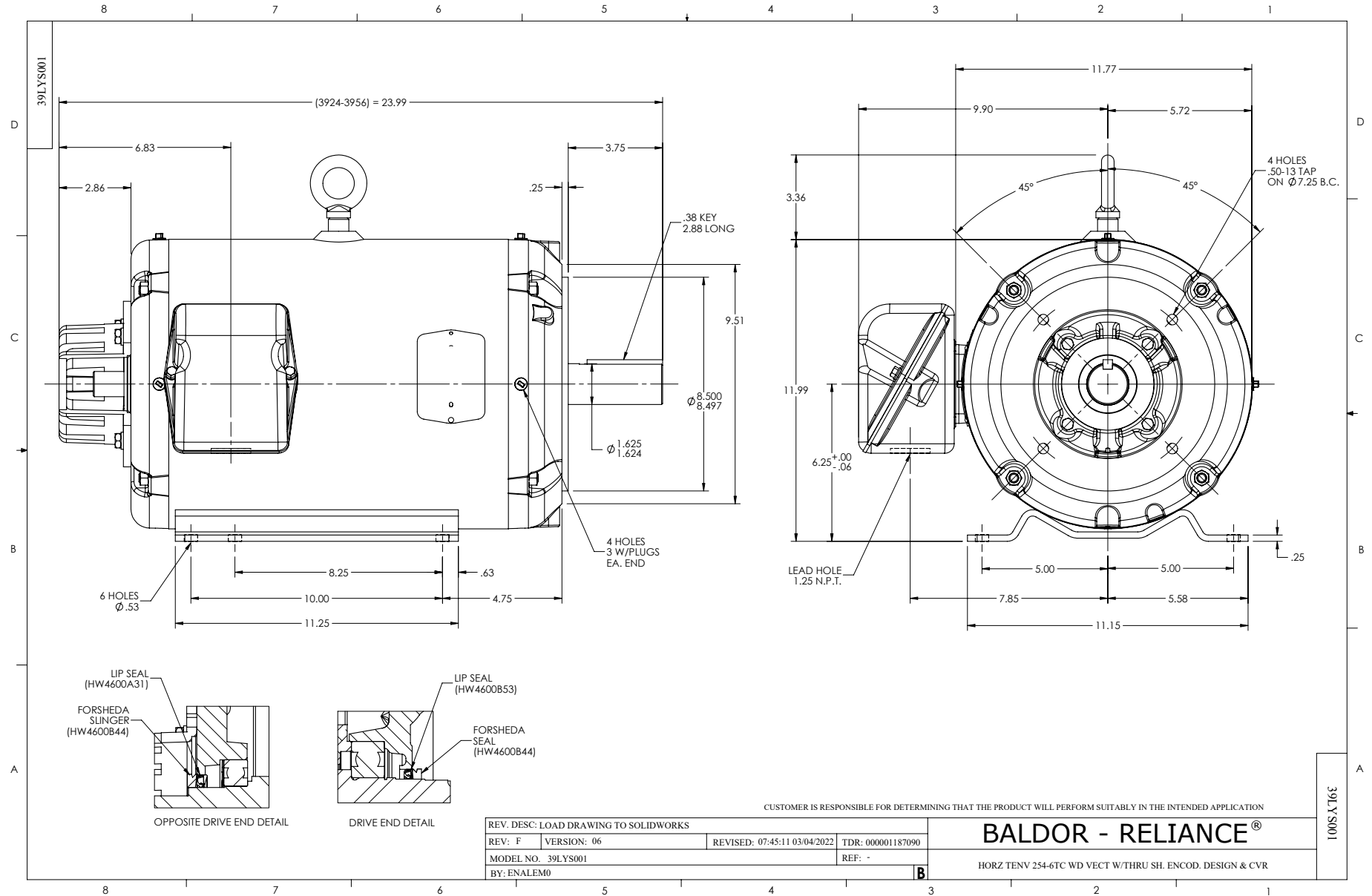
Nameplate

NP1167L					
CAT NO	ZDWNM22938T				
SPEC.	39S001W632Z1				
FRAME	254TC	HP	10 TE		
VOLTS	230/460				
MAG CUR	8.8/4.4	FLA	24/12		
RPM	1765	RPM MAX	5000		
HZ	60	PH	3	CLASS	H
SER.F.	1.00	DES	B	SL HZ	1.22
NEMA-NOM-EFF	91.7	WK2	2.44		
BLWR V	PH	HZ	A		
RATING	40C AMB-CONT				
DE BRG	6309	ODE BRG	6208		
CC	010A	SN			

Parts list

Part number	Description	Quantity
SA084783	SA 39S001W632Z1	1.000 ea
RA077942	RA 39S001W632Z1	1.000 ea
HA6016WP	ADAPTER, CONDUIT BOX, W/WHITE EPOXY, PRIM	1.000 ea
09GS1006	GASKET, CONDUIT BOX, NEOP-1/16 THICK-BLA	1.000 ea
09CB3002A01WP	CB MACH - 1.25 N.P.T. LEAD HOLE W/WHITE	1.000 ea
19XW2520A16	SCREW,1/4-20X1 TAPTITE-II OR ROLOC 91	2.000 ea
HW1001A25	LOCKWASHER 1/4, ZINC PLT .493 OD, .255 I	2.000 ea
WD1000B16	T&B CX70TN OR L70P TERMINAL LUG	1.000 ea
59XW2520G07	.25-20X.44,HEX SER WSHR,TAPTITE 2,GREEN	1.000 ea
39EP1100A25WP	FREP W/THRU SH ENC DESIGN & SEAL W/WHITE	1.000 ea
HW4600A31	SEAL,NATIONAL #453065 SINGLE LIP DOUBLE	1.000 ea
HW5100A08	W3118-035 WVY WSHR (WB)	1.000 ea
10XN2520S28	1/4-20X 1 3/4 HEX HD SS X	4.000 ea
39EP1500A04WP	PU ENDPLATE, MACH. W/WHITE EPOXY, PRIMED	1.000 ea
HW4600B53	SEAL 1.688 X 2.275 X 0.312 SINGLE LIP DB	1.000 ea
HW4600B44	V-RING SLINGER 1.500 X 1.810 X .28 VITON	1.000 ea
HW4600B44	V-RING SLINGER 1.500 X 1.810 X .28 VITON	1.000 ea
HA3154S02	THRUBOLT STUD 3/8-16 X 15.875 SS	4.000 ea
XY3816S12	3/8-16 HEX FINISHED NUT SS	8.000 ea
HA6881	BEI HS35 THRU SHAFT ENCODER PROTECTIVE C	1.000 ea
10XN3816S12	3/8-16 X 3/4 HEX HD CAP SCREW, STAINLE	3.000 ea
HW1001S38	WASHER, 3/8 SPLT LK, STAINLESS STEEL	3.000 ea
09CB3501WP	CB LID FOR 09CB3001 & 09CB3002 W/WHITE P	1.000 ea
12GS1002	GASKET, CONDUIT BOX LID, NEOP	1.000 ea
19XT2520S12	1/4-20X3/4 HWH NO SLOT TY.23 18-8 S.S.	2.000 ea
HW1001S25	WASHER, 1/4 SPLT LK, STAINLESS STEEL	2.000 ea
HW2502G25	#303 SS,SQ KEY 3/8 X 2.880	1.000 ea
MJ5001A27	32220KN GRAY SEALER *MIN BUY 4 QTS=1GAL	0.016 qt
MJ5002A01	SILICON RUBBER SEALANT, 732CL 10.3 OZ TU	0.025 ea
HA5027A01	HA4066A01 T-DRAIN X2 BAGGED	1.000 ea
09GS1017	GASKET, CONDUIT BOX, .125 THICK BLACK NE	1.000 ea

HW4032A01	BLACK DRAIN PLUG FOR WASH DOWN MOTORS	3.000 ea
MJ1000A02	GREASE, POLYREX EM EXXON	0.030 lb
HW4032A01	BLACK DRAIN PLUG FOR WASH DOWN MOTORS	3.000 ea
OE5001A87	TENV W/OEHS35A15 W/BLIND SHAFT,TETHER, A	1.000 ea
MG1025W01	WILKOFAS, 781.01, SIGNAL WHITE #9003	0.050 ga
85XU0407S04	4X1/4 U DRIVE PIN STAINLESS	2.000 ea
LB1164	LABEL,WARNING AND DRAIN	1.000 ea
LC0145B01	CONNECTION LABEL	1.000 ea
NP1167L	SS VEC UL CSA CC	1.000 ea
40PA1000	PACKAGING GROUP	1.000 ea
LB1624	COMBINED WARNING LABEL, ISO/ANSI PICTOGR	1.000 ea



CD0005

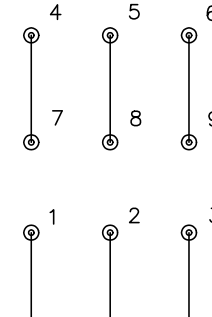


LOW VOLTAGE
(2Y)



LINE

HIGH VOLTAGE
(1Y)



LINE

NOTES:

1. INTERCHANGE ANY TWO LINE LEADS TO REVERSE ROTATION.
2. OPTIONAL THERMOSTATS ARE PROVIDED WHEN SPECIFIED.
3. ACTUAL NUMBER OF INTERNAL PARALLEL CIRCUITS MAY BE A MULTIPLE OF THOSE SHOWN ABOVE.
4. LEAD COLORS ARE OPTIONAL. LEADS MUST ALWAYS BE NUMBERED AS SHOWN.

CD0005

REV. DESC: REVISE TO SHOW OPTIONAL COLORS			
REV. LTR: E	BY: JLP	REVISED: 01/19/99 10:15	TDR: 0171435
S00000		FILE: AAA00005140	MDL: -
		MTL: -	

BALDOR ELECTRIC Co.

3PH, DV, 9 LEADS