

BALDOR[®] • RELIANCE 

Product Information Packet

CTM1760T

10/2.5HP, 1760/875RPM, 3PH, 60HZ, 0748M, N

Part Detail							
Revision:	-	Status:	PRD/A	Change #:		Proprietary:	No
Type:	AC	Elec. Spec:	07WGZ112	CD Diagram:	CD0032	Mfg Plant:	
Mech. Spec:	07N044	Layout:	07LYN044	Poles:	04/08	Created Date:	12-14-2020
Base:	RG	Eff. Date:	12-18-2020	Leads:	6#14		

Specs			
Catalog Number:	CTM1760T	Insulation Class:	F
Enclosure:	TEFC	Inverter Code:	Not Inverter
Frame:	213T	KVA Code:	K
Frame Material:	Iron	Lifting Lugs:	Standard Lifting Lugs
Motor Letter Type:	Three Phase	Locked Bearing Indicator:	No Locked Bearing
Output @ Frequency:	10.000 HP @ 60 HZ	Motor Lead Quantity/Wire Size:	6 @ 14 AWG
	2.500 HP @ 60 HZ	Motor Lead Exit:	Ko Box
Synchronous Speed @ Frequency:	1800 RPM @ 60 HZ	Motor Lead Termination:	Flying Leads
Voltage @ Frequency:	460.0 V @ 60 HZ	Motor Type:	0748M
XP Class and Group:	None	Mounting Arrangement:	F1
XP Division:	Not Applicable	Power Factor:	47
Agency Approvals:	UR	Product Family:	Chemical Processing (Not DC)
	CSA	Pulley End Bearing Type:	Ball
Auxillary Box:	No Auxillary Box	Pulley Face Code:	Standard
Auxillary Box Lead Termination:	None	Pulley Shaft Indicator:	Standard
Base Indicator:	Rigid	Rodent Screen:	None
Bearing Grease Type:	Polyrex EM (-20F +300F)	Shaft Extension Location:	Pulley End
Blower:	None	Shaft Ground Indicator:	No Shaft Grounding

Current @ Voltage:	12.800 A @ 460.0 V	Shaft Rotation:	Reversible
Design Code:	B	Shaft Slinger Indicator:	Shaft Slinger
Drip Cover:	No Drip Cover	Speed Code:	2S-1W-VT
Duty Rating:	CONT	Motor Standards:	NEMA
Electrically Isolated Bearing:	Not Electrically Isolated	Starting Method:	Direct on line
Enclosure Modification:	Severe Duty Features	Thermal Device - Bearing:	None
Feedback Device:	NO FEEDBACK	Thermal Device - Winding:	None
Front Face Code:	Standard	Vibration Sensor Indicator:	No Vibration Sensor
Front Shaft Indicator:	None	Winding Thermal 1:	None
Heater Indicator:	No Heater	Winding Thermal 2:	None

Nameplate NP2134											
CAT.NO.	CTM1760T										
SPEC.	07N044Z112G1										
HP	10/2.5										
VOLTS	460										
AMP	12.8/4.8										
RPM	1760/875										
FRAME	215T				HZ	60		PH	3		
SER.F.	1.15			CODE	K		DES	B		CL	F
NEMA-NOM-EFF					PF						
RATING	40C AMB-CONT										
CC									USABLE AT 208V	N/A	
DE	6307				ODE	6206					
ENCL	TEFC			SN							
	SFA 14.7/5.4										

Parts List		
Part Number	Description	Quantity
SA388842	SA 07N044Z112G1	1.000 EA
RA379206	RA 07N044Z112G1	1.000 EA
37FN3002A01SP	EXFN, PLASTIC, 9.00 OD, 1.155 ID	1.000 EA
HW3201A05	3/8-16 EYEBOLT	1.000 EA
RM1017	LEAD SEPERATOR GASKET MODEL 307 1/8" THK	1.000 EA
09CB1002A05G	CONDUIT BOX, 1.00 N.P.T. (GRAY)	1.000 EA
51XW2520A12	.25-20 X .75, TAPTITE II, HEX WSHR SLTD	2.000 EA
11XW1032G06	10-32 X .38, TAPTITE II, HEX WSHR SLTD U	1.000 EA
HW3001B01	BRASS CUP WASHER, FOR #10 SCREW	1.000 EA
10XN2520S06	1/4 20X3/8 HX HD CAP S.S.	1.000 EA
WD1000B16	T&B CX70TN OR L70P TERMINAL LUG	1.000 EA
37EP1100A72G	FR ENDPLATE, MACH W/GRAY EPOXY	1.000 EA
HW4500A01	1641B(ALEMITE)400 UNIV, GREASE FITT	1.000 EA
HA4051A00	PLASTIC CAP FOR GREASE FITTING	1.000 EA
HW4500A17	317400 ALEMITE GREASE RELIEF	1.000 EA
HA4054	SHORT T-DRAIN FITTING, .125" N.P.T.	1.000 EA
HW4600A01	#11585 SEAL(C-R),2669 NAT	1.000 EA
HW5100A06	W2420-025 WVY WSHR (WB)	1.000 EA
37EP1101A60G	PU EP 07 BRG W/GRS, RELIEF, DRAIN PLUG &	1.000 EA
HW4500A01	1641B(ALEMITE)400 UNIV, GREASE FITT	1.000 EA
HA4051A00	PLASTIC CAP FOR GREASE FITTING	1.000 EA
HW4500A17	317400 ALEMITE GREASE RELIEF	1.000 EA
HW4600B51	SEAL 1.375 X 2.125 X 0.313 SINGLE LIP DB	1.000 EA
HA4054	SHORT T-DRAIN FITTING, .125" N.P.T.	1.000 EA

Parts List (continued)		
Part Number	Description	Quantity
HA3104A32	THRUBOLT- 5/16-18 X12.750	4.000 EA
XY3118A12	5/16-18 HEX NUT DIRECTIONAL SERRATION	4.000 EA
51XB1214A20	12-14X1.25 HXWSSLD SERTYB	1.000 EA
10XN2520A28	1/4-20X 1 3/4 HEX HD	3.000 EA
07FH1001A01G	SPL FAN HOUSING, 307, W/GREASER, GRAY EP	1.000 EA
WD4100A02	DP-1000 HEYCO PLUG OR 62MP1000 MICRO PL	1.000 EA
12CB1503G	CONDUIT BOX CAST. (GRAY)	1.000 EA
12GS1002	GASKET, CONDUIT BOX LID, NEOP	1.000 EA
10XN2520A24	1/4-20X 1 1/2 HEX HD X	2.000 EA
HW1001A25	LOCKWASHER 1/4, ZINC PLT .493 OD, .255 I	2.000 EA
HA1005A02	SLINGER, OD 2.00, ID 1.14, 206 BRG,	1.000 EA
HW4600B33	V-RING SLINGER 1.375 X 1.890 X .35 VITON	1.000 EA
HW2501F21	KEY, 5/16 SQ X 2.375	1.000 EA
HA7000A02	KEY RETAINER RING, 1 1/8 DIA, 1 3/8 DIA	1.000 EA
MJ5001A27	32220KN GRAY SEALER *MIN BUY 4 QTS=1GAL	0.001 QT
85XU0407S04	4X1/4 U DRIVE PIN STAINLESS	2.000 EA
LB1624	COMBINED WARNING LABEL, ISO/ANSI PICTOGR	1.000 EA
MJ1000A02	GREASE, POLYREX EM EXXON	0.050 LB
37FN3002A01SP	EXFN, PLASTIC, 9.00 OD, 1.155 ID	1.000 EA
MG1025N19	WILKOFASST, 778.50, RELIANCE BLUE-GREEN 8	0.036 GA
LC0032	CONNECTION LABEL	1.000 EA
MN416A01	TAG-INSTAL-MAINT no wire (2100bx)4/22	1.000 EA
NP2134	SS CP SUPER-E UL CSA CC REV MTG	1.000 EA
07PA1011	PKG GRP, 07 CAST IRON PK1181	1.000 EA

AC Induction Motor Performance Data

Record # 85819

Preliminary Data Sheet

Winding: 07WGZ112-R001			Type: 0748M	Enclosure: TEFC	
Nameplate Data			460 V, 60 Hz: High Speed Connection		
Rated Output (HP)	10/2.5		Full Load Torque	29.87 LB-FT	
Volts	460		Start Configuration	direct on line	
Full Load Amps	12.8/4.8		Breakdown Torque	104 LB-FT	
R.P.M.	1760/875		Pull-up Torque	40.34 LB-FT	
Hz	60 Phase	3	Locked-rotor Torque	91.1 LB-FT	
NEMA Design Code	B KVA Code	K	Starting Current	108 A	
Service Factor (S.F.)	1.15		No-load Current	4.74 A	
NEMA Nom. Eff.	0 Power Factor	0	Line-line Res. @ 25°C	1.17 Ω	
Rating - Duty	40C AMB-CONT		Temp. Rise @ Rated Load	85°C	
S.F. Amps	14.7/5.4		Temp. Rise @ S.F. Load	104°C	
			Locked-rotor Power Factor	46	
			Rotor inertia	1.19 lb-ft ²	

Load Characteristics 460 V, 60 Hz, 10 HP

% of Rated Load	25	50	75	100	125	150	S.F.
Power Factor	48	70	78	83	84	84	84
Efficiency	85.4	89.4	89.4	88.1	86.3	83.9	87
Speed	1791	1781	1771	1759	1747	1731	1752
Line amperes	5.56	7.51	9.89	12.83	16.03	19.93	14.8

AC Induction Motor Performance Data

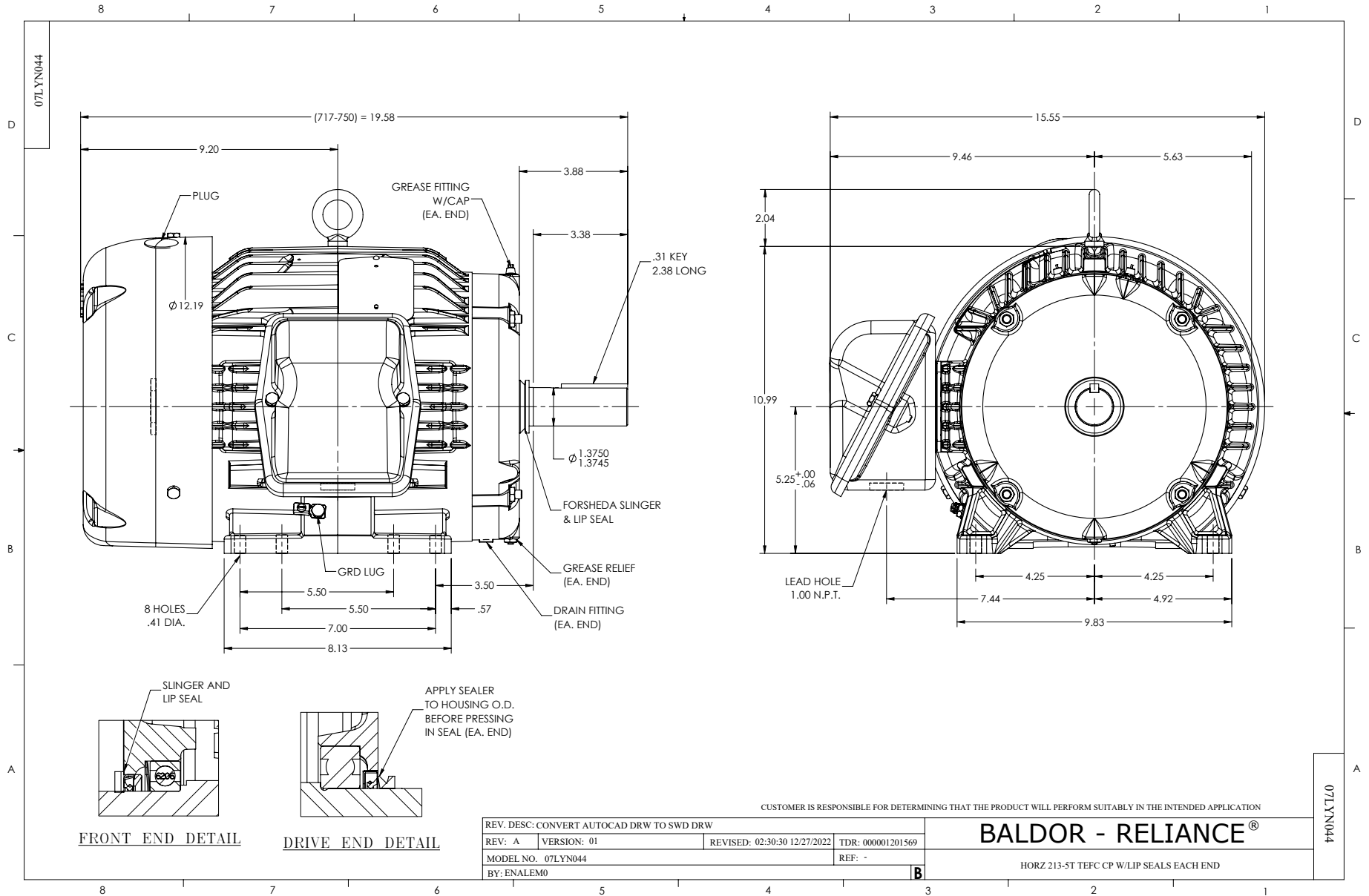
Record # 85820

Preliminary Data Sheet

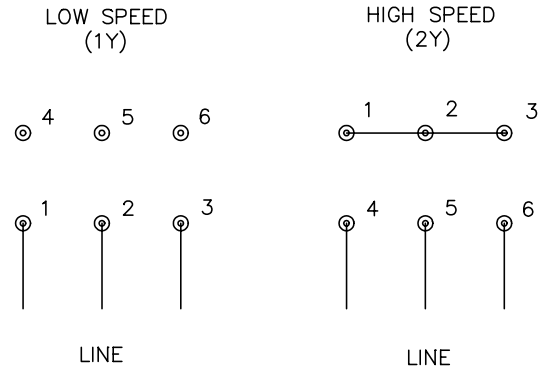
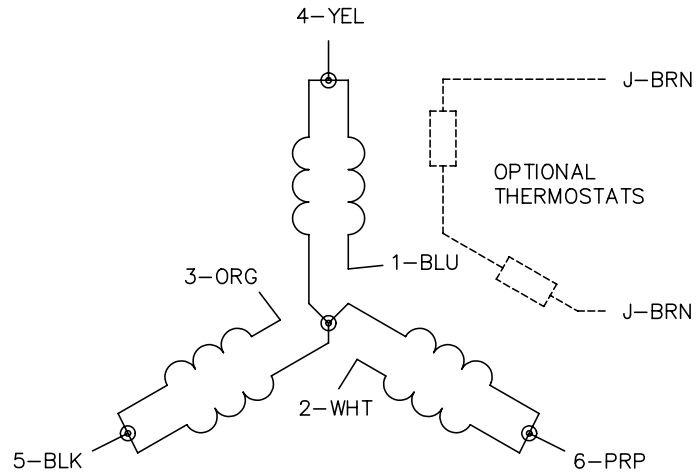
Winding: 07WGZ112-R001			Type: 0748M	Enclosure: TEFC	
Nameplate Data			460 V, 60 Hz: Low Speed Connection		
Rated Output (HP)	10/2.5		Full Load Torque	14.9 LB-FT	
Volts	460		Start Configuration	direct on line	
Full Load Amps	12.8/4.8		Breakdown Torque	36.1 LB-FT	
R.P.M.	1760/875		Pull-up Torque	17.3 LB-FT	
Hz	60 Phase	3	Locked-rotor Torque	27.1 LB-FT	
NEMA Design Code	B KVA Code	K	Starting Current	18.6 A	
Service Factor (S.F.)	1.15		No-load Current	3.36 A	
NEMA Nom. Eff.	0 Power Factor	0	Line-line Res. @ 25°C	4.68 Ω	
Rating - Duty	40C AMB-CONT		Temp. Rise @ Rated Load	43°C	
S.F. Amps	14.7/5.4		Temp. Rise @ S.F. Load	51°C	
			Locked-rotor Power Factor	46	
			Rotor inertia	1.19 lb-ft ²	

Load Characteristics 460 V, 60 Hz, 2.5 HP

% of Rated Load	25	50	75	100	125	150	S.F.
Power Factor	23	38	50	59	65	68	63
Efficiency	74	83.1	85.9	86.7	86.5	85.7	86.6
Speed	895.4	891.1	886.4	881.4	875.7	869.1	878
Line amperes	3.45	3.69	4.07	4.59	5.22	5.99	4.97



CD0032



NOTES:

1. INTERCHANGE ANY TWO LINE LEADS TO REVERSE ROTATION.
2. OPTIONAL THERMOSTATS ARE PROVIDED WHEN SPECIFIED.
3. ACTUAL NUMBER OF INTERNAL PARALLEL CIRCUITS MAY BE A MULTIPLE OF THOSE SHOWN ABOVE.
4. LEAD COLORS ARE OPTIONAL. LEADS MUST ALWAYS BE NUMBERED AS SHOWN.

REV. DESC: REVISE TO SHOW OPTIONAL COLORS			
REV. LTR: E	BY: JLP	REVISED: 01/22/99 8:27	TDR: 0171435
CD0032		FILE: AAA00005145	MDL: -
		MTL: -	

BALDOR ELECTRIC Co.

3PH, SV, 6 LEADS, 2-SPEED 1-WINDING VARIABLE TORQUE

CD0032