

BALDOR[®] • RELIANCE 

Product Information Packet

CTM1767T

60HP, 1775RPM, 3PH, 60HZ, 364T, TEFC, FOOT,

Part Detail							
Revision:	L	Status:	PRD/A	Change #:		Proprietary:	No
Type:	AC	Elec. Spec:	A36WG0808	CD Diagram:	416820-007	Mfg Plant:	
Mech. Spec:		Layout:	617438-427	Poles:	04/08	Created Date:	10-19-2010
Base:		Eff. Date:	09-27-2023	Leads:	3#4,3#8		

Specs			
Catalog Number:	CTM1767T	Feedback Device:	NO FEEDBACK
Enclosure:	TEFC	Heater Indicator:	No Heater
Frame:	364T	Insulation Class:	F
Frame Material:	Iron	Inverter Code:	Inverter Ready
Motor Letter Type:	Three Phase	KVA Code:	H
Output @ Frequency:	15.000 HP @ 60 HZ	Lifting Lugs:	Standard Lifting Lugs
	60.000 HP @ 60 HZ	Motor Lead Quantity/Wire Size:	3 @ 4 AWG
Synchronous Speed @ Frequency:	1800 RPM @ 60 HZ	Motor Type:	A36052M
Voltage @ Frequency:	460.0 V @ 60 HZ	Mounting Arrangement:	F1
Haz Area Class and Group:	None	Pulley End Bearing Type:	Ball
Haz Area Division:	Not Applicable	Pulley Face Code:	Standard
Agency Approvals:	CCSA US	Shaft Ground Indicator:	No Shaft Grounding
Auxillary Box:	No Auxillary Box	Shaft Rotation:	Reversible
Base Indicator:	Rigid	Shaft Slinger Indicator:	Shaft Slinger
Bearing Grease Type:	Polyrex EM (-20F +300F)	Speed Code:	2S-1W-VT
Current @ Voltage:	69.600 A @ 460.0 V	Motor Standards:	NEMA
Design Code:	B	Starting Method:	Direct on line
Drip Cover:	No Drip Cover	Thermal Device - Bearing:	None

Duty Rating:	CONT	Thermal Device - Winding:	None
---------------------	------	----------------------------------	------

Nameplate NP2295L											
SPEC NO.	P36G6574			CAT.NO.	CTM1767T			FRAME	364T		
HP		RPM		VOLTS		AMPS		HZ		TYPE	PM
	60	1775	460		69.6		60	SF	1.15		
	15	885	460		24.1		60			INSUL.CLASS	F
DRIVE END BEARING	65BC03JPP30A			DUTY	CONT		AMB	40			
OPP D.E. BEARING	65BC03JPP30A			ENCL	TEFC		DESIGN	B			
SER.NO.		CODE	H	PHASE	3						
	HIGH SPEED EFF: NOM=93.0, GUAR						=92.4				
	COOLING TOWER; IP-55 CONSTR						CAT:CTM1767T		MOTOR WEIGHT		

Parts List		
Part Number	Description	Quantity
SA207441	SA P36G6574	1.000 EA
RA194708	RA P36G6574	1.000 EA
NP2295L	BALDOR RELIANCE INDUSTRIAL MTR, SS, CSA	1.000 EA
000692000VD	LABEL WARNING	1.000 EA
004824015A	GREASE POLYREX EM	0.544 LB
032018008AK	HHCS 1/4-20X1 PLATED	4.000 EA
032018012DK	HHCS 1/2-13X1-1/2 PLTD. 032018012DR	4.000 EA
032018024CK	HHCS 3/8-16X3 PLTD.	3.000 EA
034180012DA	KEY 1X4X1/4X1-1/2 L	1.000 EA
034530052AB	P/NIP 1/8X6-1/2 Zinc	1.000 EA
034690002AB	PPLG 1/4" PLTD.	1.000 EA
078548001K	FAN KB 100/30 (70) 360	1.000 EA
078559001A	+FANCV - 360	1.000 EA
085922093AF	BRKT 360 085922072WCC	1.000 EA
415028001Y	SEAL - 360	1.000 EA
415045002E	SLGR	1.000 EA
415096002A	CPLG 1/8 HEX TYPE	1.000 EA
412118006A	DRAIN	1.000 EA
423709011C	WASHER	3.000 EA
415028001Y	SEAL - 360	1.000 EA
415045002E	SLGR	1.000 EA
415072001B	CLAMP	1.000 EA
415096002A	CPLG 1/8 HEX TYPE	1.000 EA
412118006A	DRAIN	1.000 EA

Parts List (continued)		
Part Number	Description	Quantity
423709011C	WASHER	3.000 EA
032018012DK	HHCS 1/2-13X1-1/2 PLTD. 032018012DR	4.000 EA
032018024CK	HHCS 3/8-16X3 PLTD.	3.000 EA
032018010CK	HHCS 3/8-16X1-1/4 PLTD. 032018010CR	4.000 EA
410700004F	WSHR	1.000 EA
034530020AB	P/NIP 1/8X2-1/2 PLTED	1.000 EA
034690002AB	PPLG 1/4" PLTD.	1.000 EA
085922093AF	BRKT 360 085922072WCC	1.000 EA
033512008LB	HHTTS 1/4-20X1 PLATED	4.000 EA
034000014AB	WSH ID.406 OD.812 TH.065	4.000 EA
035000001A	ALFTG 1/8" 1610-BL	1.000 EA
035000001A	ALFTG 1/8" 1610-BL	1.000 EA
048977006C	GRFTG - XP	1.000 EA
065776000C	GASKET,MAIN CBOX, 320-400	1.000 EA
067053000B	GASK 320-400	1.000 EA
076708000BB	CONDUIT BOX-360	1.000 EA
076709000A	C/B Cover - 360	1.000 EA
406099000A	PLUG - FAN COVER 320-440	1.000 EA
415000115H	T/LUG #2AWG-4/0AWG	1.000 EA
418150003A	GREASE FITTING CAP	1.000 EA
MG1025G05	WILKOFAS, 789.227, MED. GRAY CHAR. MET.	0.250 GA
033775004EA	DRSCR #6-1/4 304 S.S.	4.000 EA
418150003A	GREASE FITTING CAP	1.000 EA
048977006C	GRFTG - XP	1.000 EA

Product Information Packet: CTM1767T - 60HP,1775RPM,3PH,60HZ,364T,TEFC,FOOT,

034180034HA	KEY 5/8X5/8X4-1/4 L	1.000 EA
421948040	MYLAR DIAG 2 SPEED 1 WDG	1.000 EA
14PA1000	PACKAGING 314 GROUP COMBINED PRINT	1.000 EA
032018005DL	1/2-13 X 5/8 SILICON BRONZE HHCS	1.000 EA


REL. S.O.	FRAME	HP	TYPE	PHASE/HERTZ	RPM	VOLTS
	364T	60/15	PM	3/60	1775/885	460
AMPS	DUTY	AMB °C/ INSUL.	S.F.	NEMA DESIGN	CODE LETTER	ENCL.
69.6/24.1	CONT	40/F	1.15	B	H	TEFC
E/S	ROTOR	TEST S.O.	TEST DATE	STATOR RES. @25 °C (BETWEEN LINES)		
591538	418141-31-TE	---	---	.132/.529		

PERFORMANCE						
LOAD	HP	AMPERES	RPM	POWER FACTOR %	EFFICIENCY %	
NO LOAD	0 / 0	25.9 / 15.5	1800 / 900	5.73 / 4.11	0 / 0	
1/4	15.0 / 3.76	30.6 / 16.1	1795 / 897	51.4 / 26.1	89.6 / 83.6	
2/4	30.0 / 7.51	41.3 / 17.9	1789 / 894	73.0 / 44.1	93.0 / 89.1	
3/4	45.0 / 11.2	54.5 / 20.6	1784 / 891	82.7 / 56.7	93.6 / 90.1	
4/4	60.0 / 15.0	69.6 / 24.1	1777 / 888	86.6 / 65.0	93.3 / 89.8	
5/4	74.9 / 18.8	85.9 / 28.2	1771 / 884	88.2 / 70.0	92.6 / 89.0	

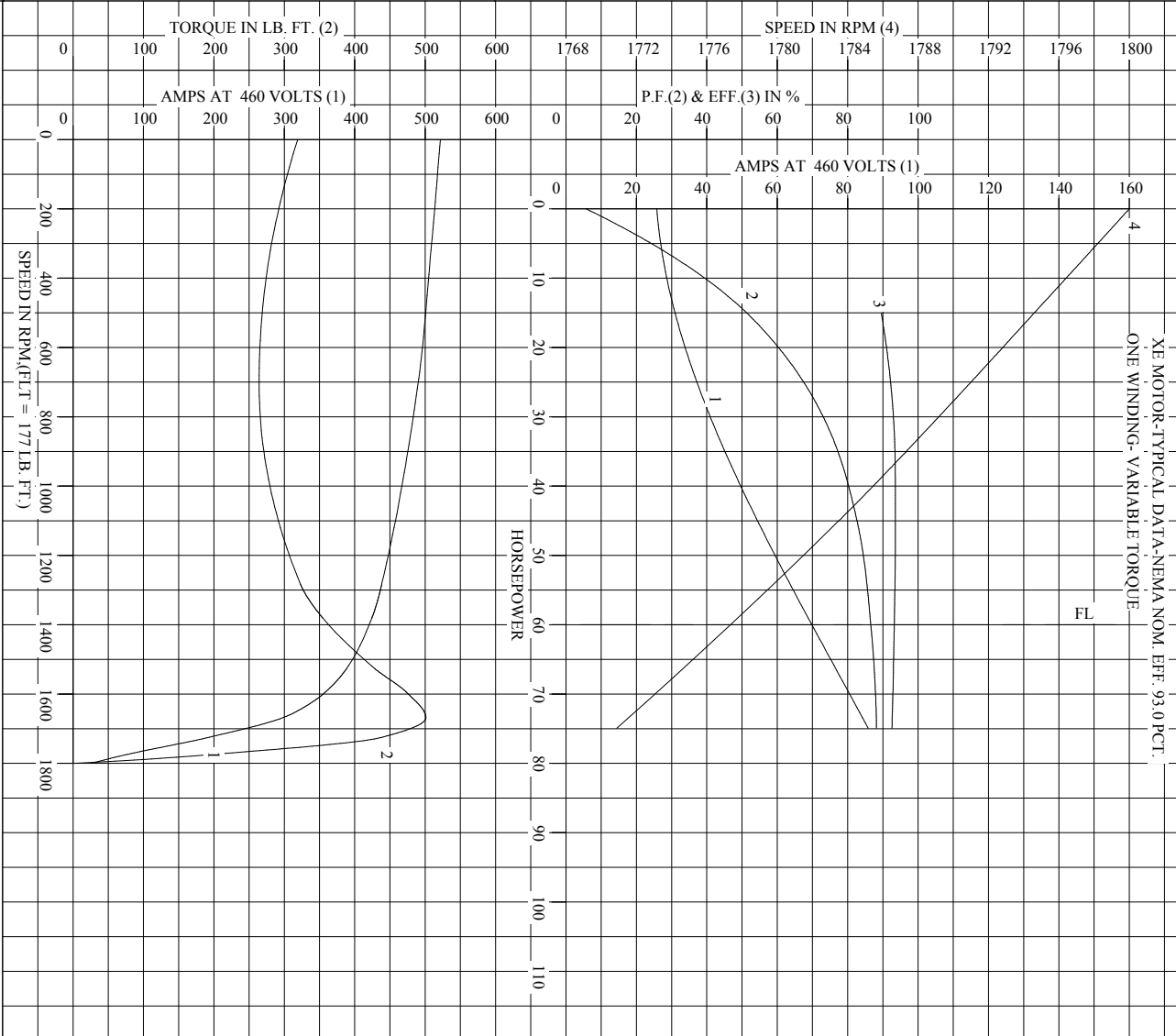
SPEED TORQUE					
	RPM	TORQUE % FULL LOAD	TORQUE LB.-FT.	AMPERES	
LOCKED ROTOR	0 / 0	180 / 149	319 / 132	522 / 115	
PULL UP	700 / 150	149 / 135	264 / 120	490 / 110	
BREAKDOWN	1668 / 840	283 / 215	501 / 190	298 / 69.0	
FULL LOAD	1777 / 888	100 / 100	177 / 88.7	69.6 / 24.1	

AMPERES SHOWN FOR 460. VOLT CONNECTION. IF OTHER VOLTAGE CONNECTIONS ARE AVAILABLE, THE AMPERES WILL VARY INVERSELY WITH THE RATED VOLTAGE

REMARKS: TYPICAL DATA
 XE MOTOR-TYPICAL DATA-NEMA NOM. EFF. 93.0 PCT.
 ONE WINDING- VARIABLE TORQUE

	DR. BY J.J.HARRISON	A-C MOTOR PERFORMANCE DATA
	CK. BY G.R.WEBB APP. BY W.I.SMITH DATE 06/06/02	
A36WG0808-R001 ISSUE DATE 01/07/11		

REL. S.O. _____ RPM 1775/885 S.F. 1.15 ROTOR 418141-31-TE
 FRAME 364T VOLTS 460 NEMA DESIGN B TEST S.O. TYPICAL DATA
 HP 60/15 AMPS 69.6/24.1 CODE LETTER H TEST DATE ---
 TYPE PM DUTY CONT ENCLOSURE TEFC STATOR RES. @ 25 °C .132/.529
 PHASE/HERTZ 3/60 AMB °C/INSUL 40/F E/S 591538 OHMS (BETWEEN LINES)



AMPERES SHOWN FOR 460 VOLT CONNECTION, IF OTHER VOLTAGE CONNECTIONS ARE AVAILABLE, THE AMPERES WILL VARY INVERSELY WITH THE RATED VOLTAGE.

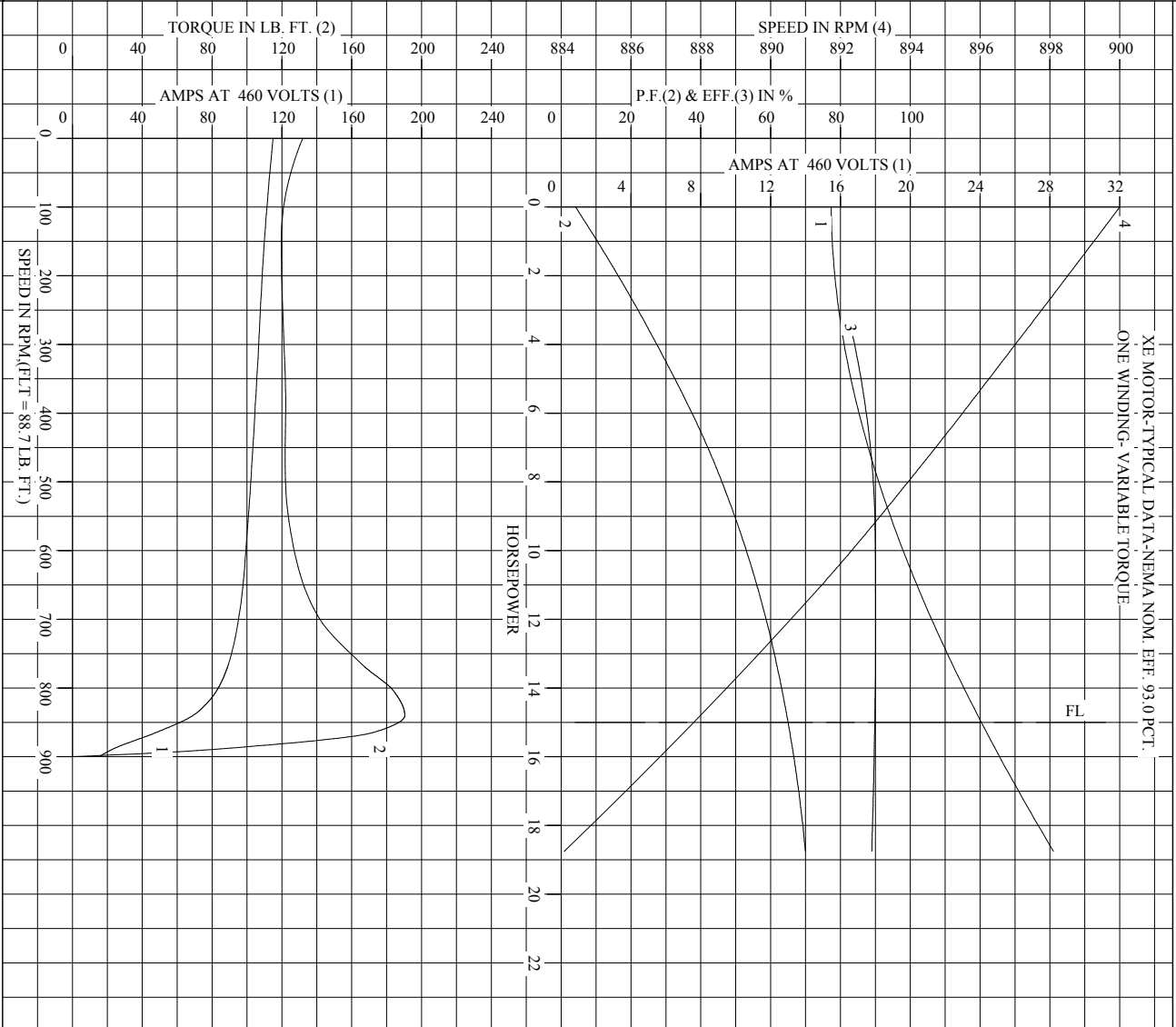
BALDOR

DR. BY J.J.HARRISON
 CK. BY G.R.WEBB
 APP. BY W.L.SMITH
 DATE 06/06/02

A-C MOTOR PERFORMANCE CURVES A36W/G0808-R001 SH 1 OF 2
 ISSUE DATE 01/07/11

Printed on 1/7/11 11:11 @ psecs-motorengr

RFL S.O. _____ RPM 1775/885 S.F. 1.15 ROTOR 418141-31-TE
 FRAME 364T VOLTS 460 NEMA DESIGN B TEST S.O. TYPICAL DATA
 HP 60/15 AMPS 69.6/24.1 CODE LETTER H TEST DATE ---
 TYPE PM DUTY CONT ENCLOSURE TEFC STATOR RES. @ 25 °C .132/.529
 PHASE/HERTZ 3/60 AMB °C/INSUL 40/F E/S 591538 OHMS (BETWEEN LINES)



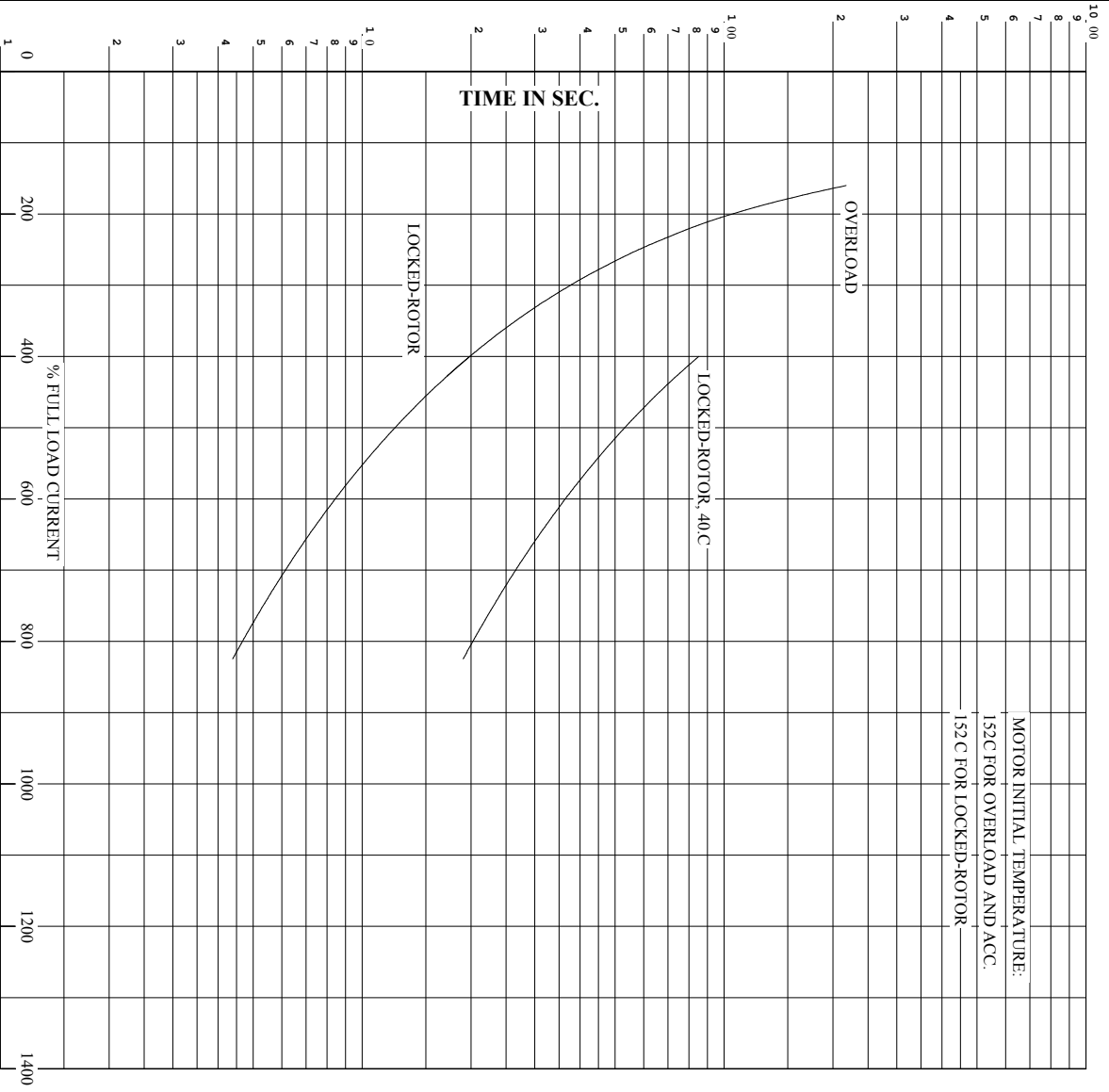
AMPERES SHOWN FOR 460 VOLT CONNECTION, IF OTHER VOLTAGE CONNECTIONS ARE AVAILABLE, THE AMPERES WILL VARY INVERSELY WITH THE RATED VOLTAGE.

DR. BY J.J. HARRISON
 CK. BY G.R. WEBB
 APP. BY W.L. SMITH
 DATE 06/06/02

A-C MOTOR PERFORMANCE CURVES A36W/G0808-R001
 SH 2 OF 2
 ISSUE DATE 01/07/11



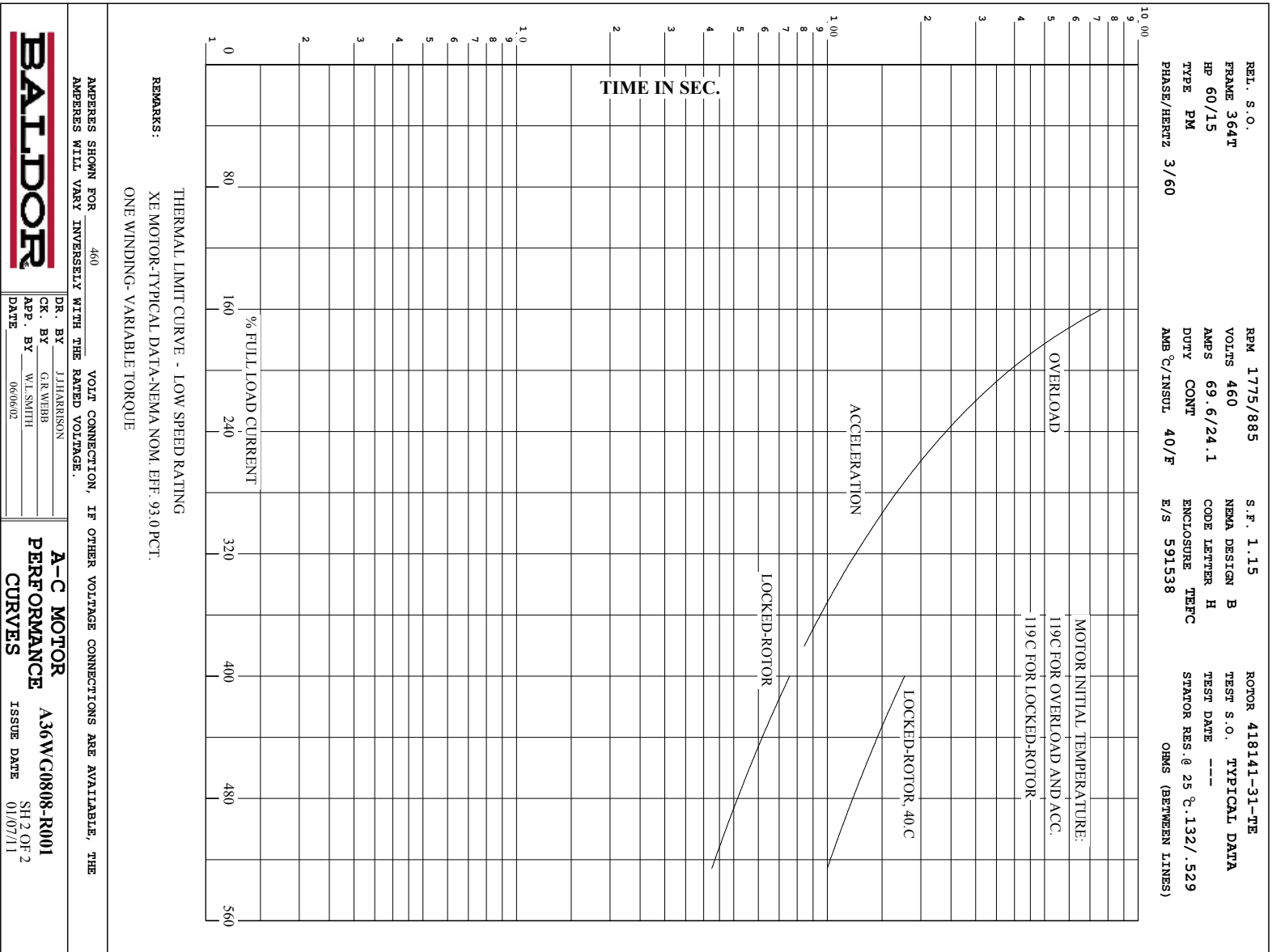
RET. S.O. RPM 1775/885 S.F. 1.15 ROTOR 418141-31-TE
 FRAME 364T VOLTS 460 NEMA DESIGN B TEST S.O. TYPICAL DATA
 HP 60/15 AMPS 69.6/24.1 CODE LETTER H TEST DATE ---
 TYPE PM DUTY CONT ENCLOSURE TEFC STATOR RES. @ 25 C. 1.32/.529
 PHASE/HERTZ 3/60 AMB C/INSUL 40/F E/S 591538 OHMS (BETWEEN LINES)



REMARKS: THERMAL LIMIT CURVE - HIGH SPEED RATING
 XE MOTOR-TYPICAL DATA-NEMA NOM. EFF. 93.0 PCT.
 ONE WINDING- VARIABLE TORQUE

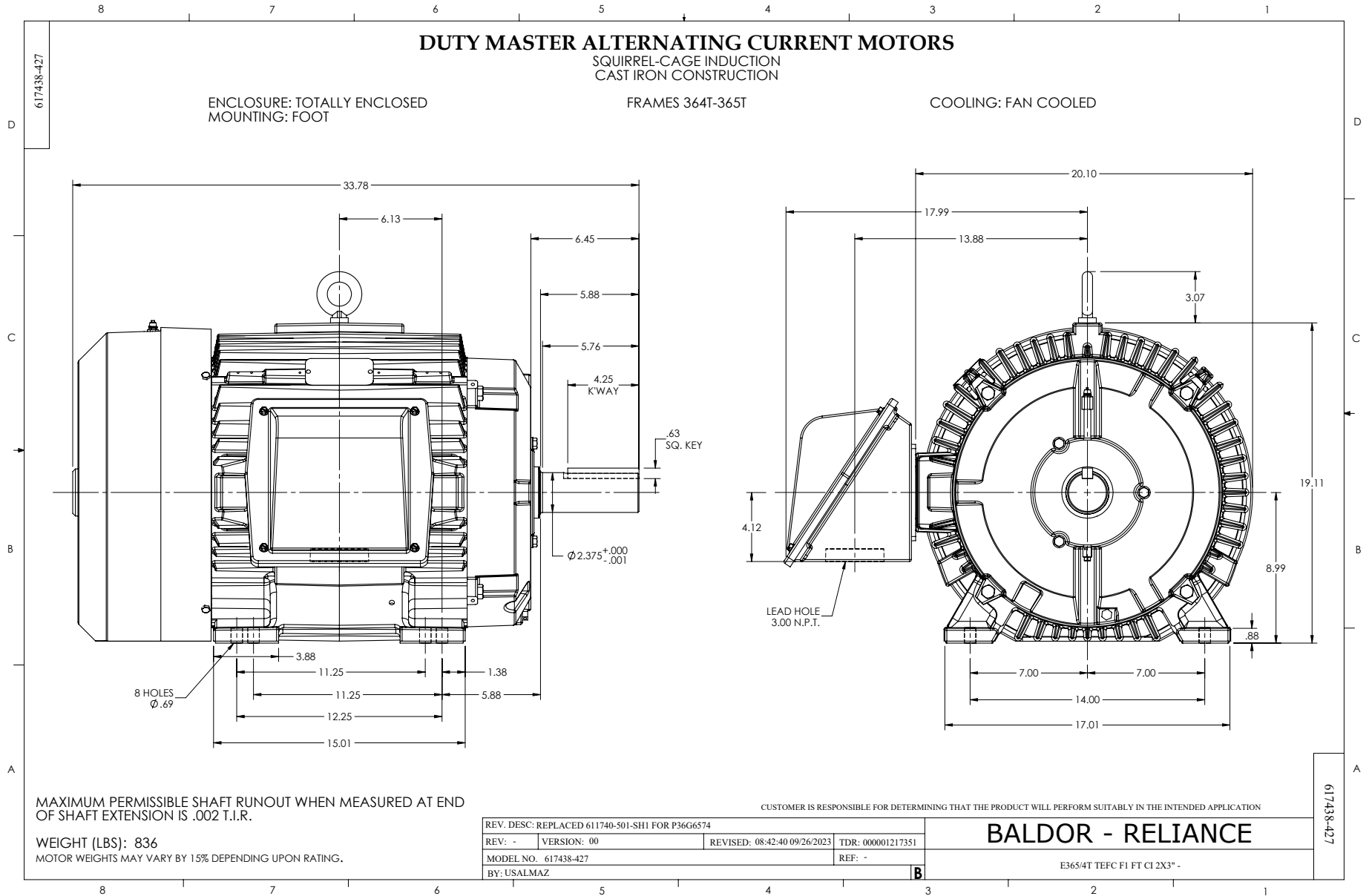
AMPERES SHOWN FOR 460 VOLT CONNECTION, IF OTHER VOLTAGE CONNECTIONS ARE AVAILABLE, THE AMPERES WILL VARY INVERSELY WITH THE RATED VOLTAGE.

	DR. BY J.HARRISON	A-C MOTOR PERFORMANCE CURVES	A36WG0808-R001 SH 1 OF 2 ISSUE DATE 01/07/11
	CK. BY GR WEBB		
	APP. BY W.L. SMITH		
	DATE 06/06/02		



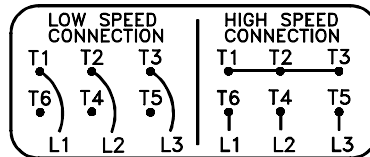
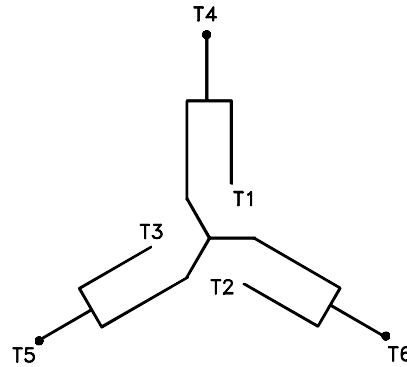
AMPERES SHOWN FOR 460 VOLT CONNECTION, IF OTHER VOLTAGE CONNECTIONS ARE AVAILABLE, THE AMPERES WILL VARY INVERSELY WITH THE RATED VOLTAGE.

DR. BY J.HARRISON	A-C MOTOR
CK. BY GR WEBB	PERFORMANCE
APP. BY W.L. SMITH	CURVES
DATE 06/06/02	A36WG0808-R001
	ISSUE DATE 01/07/11



416820-007

A-C MOTOR
CONNECTION DIAGRAM
 SINGLE WINDING MULTI-SPEEDS VARIABLE TORQUE



(N. P. 1634-DE)

416820-007

REV. DESC: LOADED TO BUS, C/R 335225		
REV. LTR: -	VERSION: 00	TDR: 000000538207
FILE: \MGA\00000\663	REVISED: 10:52:22 04/30/2010	
MTL: -	BY: RAGRA	

BALDOR

CONN DIAG - SINGLE WINDING - MULTI-SPEEDS - VARIABLE TORQUE

SH 1 of 1

Marketing maintained PDF of MN408:

<http://www.baldor.com/support/Literature/Load.ashx/MN408?ManNumber=MN408>

Marketing maintained PDF of MN416:

<http://www.baldor.com/support/Literature/Load.ashx/MN416?ManNumber=MN416>