

BALDOR® • RELIANCE 

Product Information Packet

EHM2333T

15HP,1765RPM,3PH,60HZ,254T,0944M,TEFC,F1

| Part Detail | | | | | | | |
|-------------|--------|-------------|------------|-------------|--------|---------------|------------|
| Revision: | H | Status: | PRD/A | Change #: | | Proprietary: | No |
| Type: | AC | Elec. Spec: | 09WGT597 | CD Diagram: | CD0005 | Mfg Plant: | |
| Mech. Spec: | 09J970 | Layout: | 09LYJ970 | Poles: | 04 | Created Date: | 02-02-2021 |
| Base: | RG | Eff. Date: | 11-13-2023 | Leads: | 9#12 | | |

| Specs | | | |
|---------------------------------|-------------------|--------------------------------|-----------------------|
| Catalog Number: | EHM2333T | Front Shaft Indicator: | None |
| Enclosure: | TEFC | Heater Indicator: | No Heater |
| Frame: | 254T | Insulation Class: | F |
| Frame Material: | Iron | Inverter Code: | Inverter Ready |
| Motor Letter Type: | Three Phase | KVA Code: | H |
| Output @ Frequency: | 15.000 HP @ 60 HZ | Lifting Lugs: | Standard Lifting Lugs |
| Synchronous Speed @ Frequency: | 1800 RPM @ 60 HZ | Locked Bearing Indicator: | Locked Bearing |
| Voltage @ Frequency: | 460.0 V @ 60 HZ | Motor Lead Quantity/Wire Size: | 9 @ 12 AWG |
| | 230.0 V @ 60 HZ | Motor Lead Exit: | Ko Box |
| XP Class and Group: | None | Motor Lead Termination: | Flying Leads |
| XP Division: | Not Applicable | Motor Type: | 0944M |
| Agency Approvals: | NEMA_PREMIUM | Mounting Arrangement: | F1 |
| | UR | Power Factor: | 84 |
| | NEMA PREMIUM | Product Family: | General Purpose |
| | CSA EEV | Pulley End Bearing Type: | Ball |
| Auxillary Box: | No Auxillary Box | Pulley Face Code: | Standard |
| Auxillary Box Lead Termination: | None | Pulley Shaft Indicator: | Standard |
| Base Indicator: | Rigid | Rodent Screen: | None |

| | | | |
|---------------------------------------|---------------------------|------------------------------------|--------------------------|
| Bearing Grease Type: | Polyrex EM (-20F +300F) | Shaft Extension Location: | Pulley End |
| Blower: | None | Shaft Ground Indicator: | Mounting Provisions Only |
| Current @ Voltage: | 36.200 A @ 230.0 V | Shaft Rotation: | Reversible |
| | 38.000 A @ 208.0 V | Shaft Slinger Indicator: | No Slinger |
| | 18.100 A @ 460.0 V | Speed Code: | Single Speed |
| Design Code: | A | Motor Standards: | NEMA |
| Drip Cover: | No Drip Cover | Starting Method: | Direct on line |
| Duty Rating: | CONT | Thermal Device - Bearing: | None |
| Electrically Isolated Bearing: | Not Electrically Isolated | Thermal Device - Winding: | None |
| Feedback Device: | NO FEEDBACK | Vibration Sensor Indicator: | No Vibration Sensor |
| Front Face Code: | Standard | Winding Thermal 1: | None |
| | | Winding Thermal 2: | None |

| Nameplate NP1259L | | | | | | | | | | |
|-------------------|--------------|--|--|------|----|-----|------|---|----|---|
| CAT.NO. | EHM2333T | | | | | | | | | |
| SPEC. | 09J970T597G1 | | | | | | | | | |
| HP | 15 | | | | | | | | | |
| VOLTS | 230/460 | | | | | | | | | |
| AMP | 36.2/18.1 | | | | | | | | | |
| RPM | 1765 | | | | | | | | | |
| FRAME | 254T | | | | | HZ | 60 | | PH | 3 |
| SER.F. | 1.15 | | | CODE | H | | DES | A | CL | F |
| NEMA-NOM-EFF | 92.4 | | | PF | 84 | | | | | |
| RATING | 40C AMB-CONT | | | | | | | | | |
| CC | 010A | | | | | | | | | |
| DE | 6309 | | | | | ODE | 6208 | | | |
| ENCL | TEFC | | | SN | | | | | | |
| | SFA 41/20.4 | | | | | | | | | |

| Parts List | | |
|--------------|--|----------|
| Part Number | Description | Quantity |
| SA390498 | SA 09J970T597G1 | 1.000 EA |
| RA380950 | RA 09J970T597G1 | 1.000 EA |
| HW1002A63 | WASHER, 5/8 HI-COLLAR SPRCKWASHER | 1.000 EA |
| 09CB3003 | CB W/1.75" DIA LD HL - 37, 39, 307 & 309 | 1.000 EA |
| 09GS1000 | GASKET-CONDUIT BOX, 1/16 THICK LEXIDE | 1.000 EA |
| 51XW2520A12 | .25-20 X .75, TAPTITE II, HEX WSHR SLTD | 4.000 EA |
| HW1001A25 | LOCKWASHER 1/4, ZINC PLT .493 OD, .255 I | 2.000 EA |
| WD1000B16 | T&B CX70TN OR L70P TERMINAL LUG | 1.000 EA |
| 59XW2520G07 | .25-20X.44,HEX SER WSHR,TAPTITE 2,GREEN | 1.000 EA |
| 09EP1100A14 | FREP ASSM, (FOR INTRL ROUTING PURPOSE) | 1.000 EA |
| HA3400A33 | STUD- 3/8-16 X 4.96 HEX | 4.000 EA |
| XY3816A12 | 3/8-16 FINISHED NUT W/SERRATIONS | 4.000 EA |
| HW1001A38 | LOCKWASHER 3/8, ZINC PLT .688 OD, .382 I | 4.000 EA |
| HW5100A08 | W3118-035 WVY WSHR (WB) | 1.000 EA |
| 10XN2520K28 | 1/4-20 X 1.75" HX HD SCRWGRADE 5, ZINC P | 2.000 EA |
| 09EP1101A132 | PU ENDPLATE, MACH | 1.000 EA |
| 10XN3816K28 | 3/8-16 X 1.75 HEX HD CAP SCREW, GRADE 5 | 4.000 EA |
| 84XN0540J08 | 5-40 X 1/2" SHCS, BLACK OXIDE | 2.000 EA |
| 10XN2520K36 | 1/4-20 X 2.25" HX HD SCRWGRADE 5, ZINC P | 4.000 EA |
| HW1001A25 | LOCKWASHER 1/4, ZINC PLT .493 OD, .255 I | 4.000 EA |
| HW1001A38 | LOCKWASHER 3/8, ZINC PLT .688 OD, .382 I | 4.000 EA |
| 09FH4000SP | 309 FH - BLACK PRIMER | 1.000 EA |
| HW1001A38 | LOCKWASHER 3/8, ZINC PLT .688 OD, .382 I | 4.000 EA |
| 09CB3501SP | CONDUIT BOX LID FOR 09CB3001 & 09CB3002 | 1.000 EA |

| Parts List (continued) | | |
|------------------------|--|----------|
| Part Number | Description | Quantity |
| 09GS1013SP | GS FOR 09CB3501, 12CB1500 & 12CB1503 LID | 1.000 EA |
| 51XW2520A12 | .25-20 X .75, TAPTITE II, HEX WSHR SLTD | 2.000 EA |
| HW2501G25 | KEY, 3/8 SQ X 2.875 | 1.000 EA |
| HA4051A00 | PLASTIC CAP FOR GREASE FITTING | 1.000 EA |
| HW4500A20 | 1/8NPT SL PIPE PLUG | 1.000 EA |
| HW4500A20 | 1/8NPT SL PIPE PLUG | 1.000 EA |
| HA4054 | SHORT T-DRAIN FITTING, .125" N.P.T. | 1.000 EA |
| 37FN3002B02 | EXFN, PLASTIC, 7.50 OD, 1.503 ID | 1.000 EA |
| MJ1000A02 | GREASE, POLYREX EM EXXON | 0.080 LB |
| HA4051A00 | PLASTIC CAP FOR GREASE FITTING | 1.000 EA |
| HW4500A20 | 1/8NPT SL PIPE PLUG | 1.000 EA |
| HW4500A20 | 1/8NPT SL PIPE PLUG | 1.000 EA |
| HA4054 | SHORT T-DRAIN FITTING, .125" N.P.T. | 1.000 EA |
| HW2500A25 | WOODRUFF KEY USA #1008 #BLOW CARBON STEE | 1.000 EA |
| MG1050G01 | CELEROL MEDIUM CHARCOAL METALLIC GRAY | 0.050 GA |
| 85XU0407S04 | 4X1/4 U DRIVE PIN STAINLESS | 2.000 EA |
| LB1624 | COMBINED WARNING LABEL, ISO/ANSI PICTOGR | 1.000 EA |
| LC0005 | CONN.DIA.,TY M,9-LD,DUAL VOLT,REVERSING | 1.000 EA |
| NP1259L | ALUM SUPER-E UL CC NEMA PREMIUM A60 | 1.000 EA |
| 09PA1000 | PACKAGING GROUP COMBINED PRINT | 1.000 EA |
| LB1350 | BAR CODE LABEL FOR YORK | 1.000 EA |
| MN416A01 | TAG-INSTAL-MAINT no wire (2100bx)4/22 | 1.000 EA |
| LD7020D09 | LEAD SET, 12AWG, 9 LEAD, 20" LONG LEADS | 1.000 EA |

AC Induction Motor Performance Data

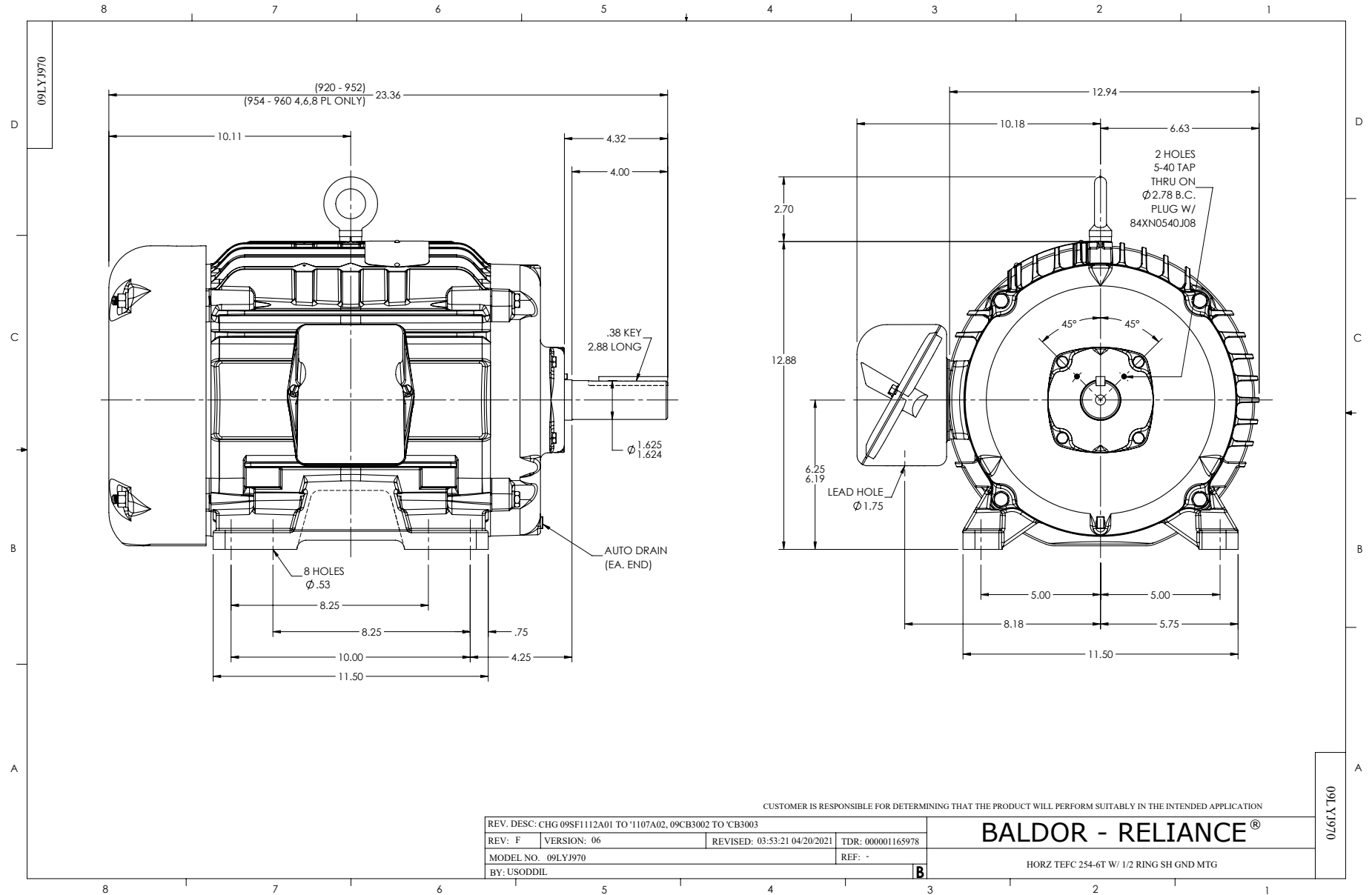
Record # 93306

Typical performance - not guaranteed values

| Winding: 09WGT597-R001 | | Type: 0944M | Enclosure: TEFC | |
|------------------------|-------------------|---------------------------|--|--|
| Nameplate Data | | | 460 V, 60 Hz: High Voltage Connection | |
| Rated Output (HP) | 15 | Full Load Torque | 44.59 LB-FT | |
| Volts | 230/460 | Start Configuration | direct on line | |
| Full Load Amps | 36.2/18.1 | Breakdown Torque | 151 LB-FT | |
| R.P.M. | 1765 | Pull-up Torque | 76.5 LB-FT | |
| Hz | 60 Phase | Locked-rotor Torque | 84.9 LB-FT | |
| NEMA Design Code | A KVA Code | Starting Current | 131 A | |
| Service Factor (S.F.) | 1.15 | No-load Current | 7.72 A | |
| NEMA Nom. Eff. | 92.4 Power Factor | Line-line Res. @ 25°C | 0.61892 Ω | |
| Rating - Duty | 40C AMB-CONT | Temp. Rise @ Rated Load | 50°C | |
| S.F. Amps | 41/20.4 | Temp. Rise @ S.F. Load | 61°C | |
| | | Locked-rotor Power Factor | 33.3 | |

Load Characteristics 460 V, 60 Hz, 15 HP

| % of Rated Load | 25 | 50 | 75 | 100 | 125 | 150 | S.F. |
|-----------------|--------|--------|------|--------|--------|--------|------|
| Power Factor | 46 | 68 | 78 | 83 | 85 | 86 | 84 |
| Efficiency | 87.5 | 91.8 | 92.6 | 92.4 | 91.8 | 90.8 | 92 |
| Speed | 1791.8 | 1784.7 | 1777 | 1768.8 | 1759.2 | 1749.3 | 1763 |
| Line amperes | 8.82 | 11.3 | 14.6 | 18.3 | 22.4 | 26.9 | 20.8 |



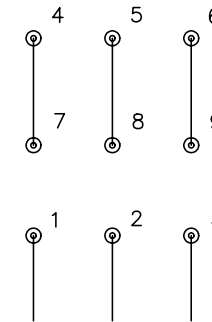
CD0005



LOW VOLTAGE
(2Y)



HIGH VOLTAGE
(1Y)



NOTES:

1. INTERCHANGE ANY TWO LINE LEADS TO REVERSE ROTATION.
2. OPTIONAL THERMOSTATS ARE PROVIDED WHEN SPECIFIED.
3. ACTUAL NUMBER OF INTERNAL PARALLEL CIRCUITS MAY BE A MULTIPLE OF THOSE SHOWN ABOVE.
4. LEAD COLORS ARE OPTIONAL. LEADS MUST ALWAYS BE NUMBERED AS SHOWN.

| | | | |
|---|---------|-------------------------|--------------|
| REV. DESC: REVISE TO SHOW OPTIONAL COLORS | | | |
| REV. LTR: E | BY: JLP | REVISED: 01/19/99 10:15 | TDR: 0171435 |
| 90000 | | FILE: AAA00005140 | MDL: - |
| | | MTL: - | |

BALDOR ELECTRIC Co.

3PH, DV, 9 LEADS

CD0005

Marketing maintained PDF of MN416:

<http://www.baldor.com/support/Literature/Load.ashx/MN416?ManNumber=MN416>