

BALDOR® • RELIANCE 

Product Information Packet

EM2508T

7.5HP,880RPM,3PH,60HZ,256T,3962M,OPSB,F1

Part Detail							
Revision:	S	Status:	PRD/A	Change #:		Proprietary:	No
Type:	AC	Elec. Spec:	39WGX910	CD Diagram:	CD0005	Mfg Plant:	
Mech. Spec:	39K57	Layout:	39LYK057	Poles:	08	Created Date:	04-24-2015
Base:	RG	Eff. Date:	12-14-2023	Leads:	9#12		

Specs			
Catalog Number:	EM2508T	Heater Indicator:	No Heater
Enclosure:	OPSB	Insulation Class:	F
Frame:	256T	Inverter Code:	Not Inverter
Frame Material:	Steel	IP Rating:	NONE
Motor Letter Type:	Three Phase	KVA Code:	G
Output @ Frequency:	7.500 HP @ 60 HZ	Lifting Lugs:	Standard Lifting Lugs
Synchronous Speed @ Frequency:	900 RPM @ 60 HZ	Locked Bearing Indicator:	No Locked Bearing
Voltage @ Frequency:	460.0 V @ 60 HZ	Motor Lead Quantity/Wire Size:	9 @ 12 AWG
	230.0 V @ 60 HZ	Motor Lead Exit:	Ko Box
Haz Area Class and Group:	None	Motor Lead Termination:	Flying Leads
Haz Area Division:	Not Applicable	Motor Type:	3962M
Agency Approvals:	NEMA_PREMIUM	Mounting Arrangement:	F1
	UR	Power Factor:	67
	NEMA PREMIUM	Product Family:	General Purpose
	CSA EEV	Pulley End Bearing Type:	Ball
Auxillary Box:	No Auxillary Box	Pulley Face Code:	Standard
Auxillary Box Lead Termination:	None	Pulley Shaft Indicator:	Standard
Base Indicator:	Rigid	Rodent Screen:	None

Bearing Grease Type:	Polyrex EM (-20F +300F)	RoHS Status:	ROHS NON-COMPLIANT
Blower:	None	Shaft Extension Location:	Pulley End
Current @ Voltage:	23.400 A @ 230.0 V	Shaft Ground Indicator:	No Shaft Grounding
	24.400 A @ 208.0 V	Shaft Rotation:	Reversible
	11.700 A @ 460.0 V	Shaft Slinger Indicator:	No Slinger
Design Code:	B	Speed Code:	Single Speed
Drip Cover:	No Drip Cover	Motor Standards:	NEMA
Duty Rating:	CONT	Starting Method:	Direct on line
Electrically Isolated Bearing:	Not Electrically Isolated	Thermal Device - Bearing:	None
Feedback Device:	NO FEEDBACK	Thermal Device - Winding:	None
Front Face Code:	Standard	Vibration Sensor Indicator:	No Vibration Sensor
Front Shaft Indicator:	None	Winding Thermal 1:	None
		Winding Thermal 2:	None

Nameplate NP1259L										
CAT.NO.	EM2508T									
SPEC.	39K057X910									
HP	7.5									
VOLTS	230/460									
AMP	23.4/11.7									
RPM	880									
FRAME	256T				HZ	60			PH	3
SER.F.	1.15		CODE	G	DES	B		CL	F	
NEMA-NOM-EFF	89.5		PF	67						
RATING	40C AMB-CONT									
CC	010A									
DE	6309			ODE	6208					
ENCL	OPSB		SN							

Parts List		
Part Number	Description	Quantity
SA299656	SA 39K057X910	1.000 EA
RA286684	RA 39K057X910	1.000 EA
HA6361A01	LIFTING LUG FOR 37, 39 & 40 FRAME ZINC	2.000 EA
HA6016	ADAPTER, CAST CONDUIT BOX	1.000 EA
09CB3003	CB W/1.75" DIA LD HL - 37, 39, 307 & 309	1.000 EA
51XW2520A12	.25-20 X .75, TAPTITE II, HEX WSHR SLTD	2.000 EA
WD1000B16	T&B CX70TN OR L70P TERMINAL LUG	1.000 EA
59XW2520G07	.25-20X.44,HEX SER WSHR,TAPTITE 2,GREEN	1.000 EA
39EP3200A01SP	FR/PU ENDPLATE, MACH	1.000 EA
HW5100A08	W3118-035 WVY WSHR (WB)	1.000 EA
39EP3201A13	PU ENDPLATE, MACH	1.000 EA
XY3816A12	3/8-16 FINISHED NUT W/SERRATIONS	8.000 EA
09CB3501SP	CONDUIT BOX LID FOR 09CB3001 & 09CB3002	1.000 EA
51XW2520A12	.25-20 X .75, TAPTITE II, HEX WSHR SLTD	2.000 EA
HW2501G25	KEY, 3/8 SQ X 2.875	1.000 EA
HA4051A00	PLASTIC CAP FOR GREASE FITTING	1.000 EA
HW4500A03	GREASE FITTING, .125 NPT 1610(ALEMITE) 8	1.000 EA
HW4500A20	1/8NPT SL PIPE PLUG	1.000 EA
MJ1000A02	GREASE, POLYREX EM EXXON	0.030 LB
HA4051A00	PLASTIC CAP FOR GREASE FITTING	1.000 EA
HW4500A03	GREASE FITTING, .125 NPT 1610(ALEMITE) 8	1.000 EA
HW4500A20	1/8NPT SL PIPE PLUG	1.000 EA
MG1050Y01	CELEROL BALDOR GOLD	0.050 GA
85XU0407S04	4X1/4 U DRIVE PIN STAINLESS	2.000 EA

Parts List (continued)		
Part Number	Description	Quantity
39AD2002A01	BAFFLE PLATE 39 OPEN, SLOTTED BAND MTRS	1.000 EA
HA3154A04	THRUBOLT STUD 3/8-16 X 18.750	4.000 EA
LB1624	COMBINED WARNING LABEL, ISO/ANSI PICTOGR	1.000 EA
39AD2002A01	BAFFLE PLATE 39 OPEN, SLOTTED BAND MTRS	1.000 EA
LC0005	CONN.DIA.,TY M,9-LD,DUAL VOLT,REVERSING	1.000 EA
NP1259L	ALUM SUPER-E UL CC NEMA PREMIUM A60	1.000 EA
39PA1000	PACKAGING GROUP 39 PRINT	1.000 EA
MN416A01	TAG-INSTAL-MAINT no wire (2100bx)4/22	1.000 EA
LD7020D09	LEAD SET, 12AWG, 9 LEAD, 20" LONG LEADS	1.000 EA

AC Induction Motor Performance Data

Record # 51733

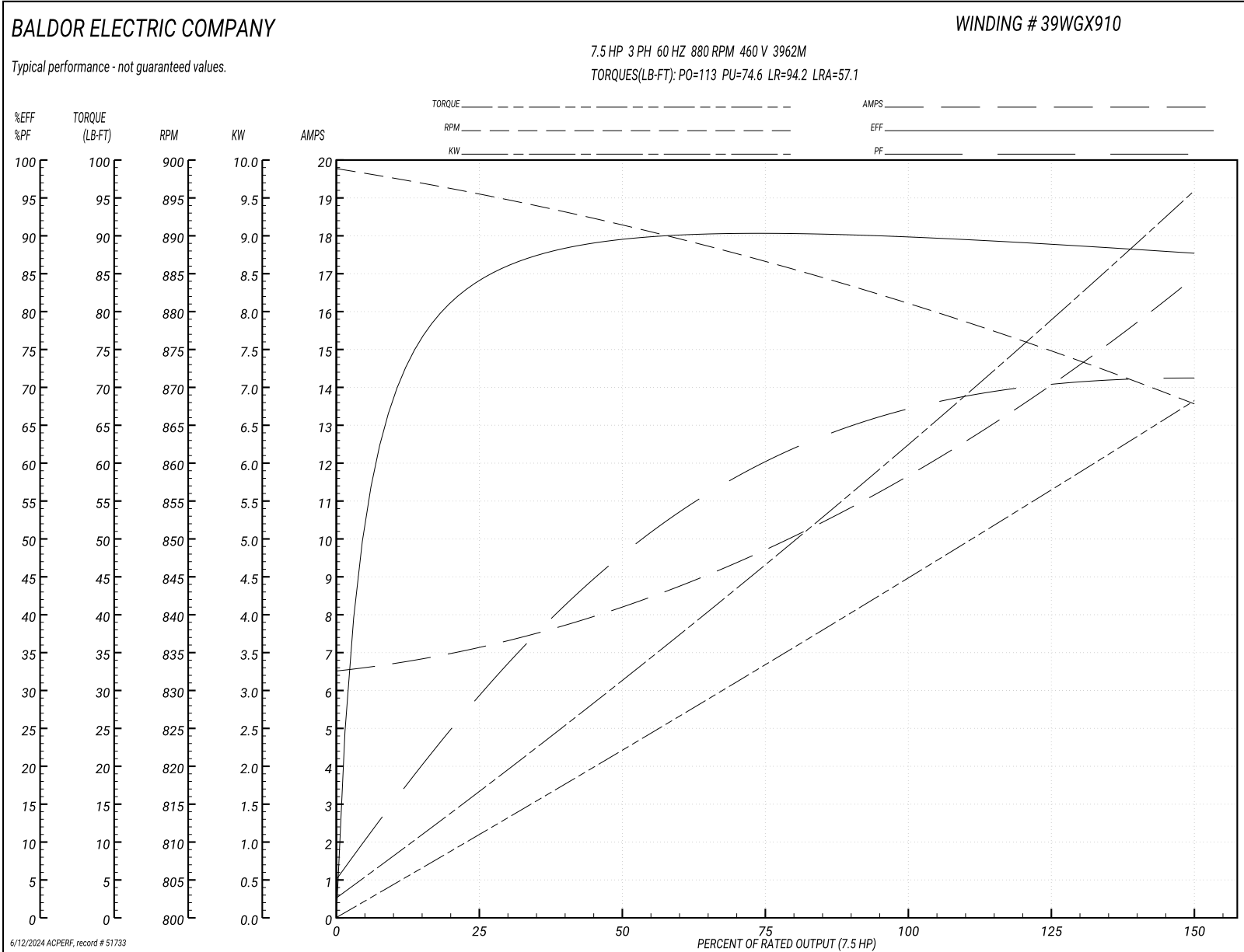
Typical performance - not guaranteed values

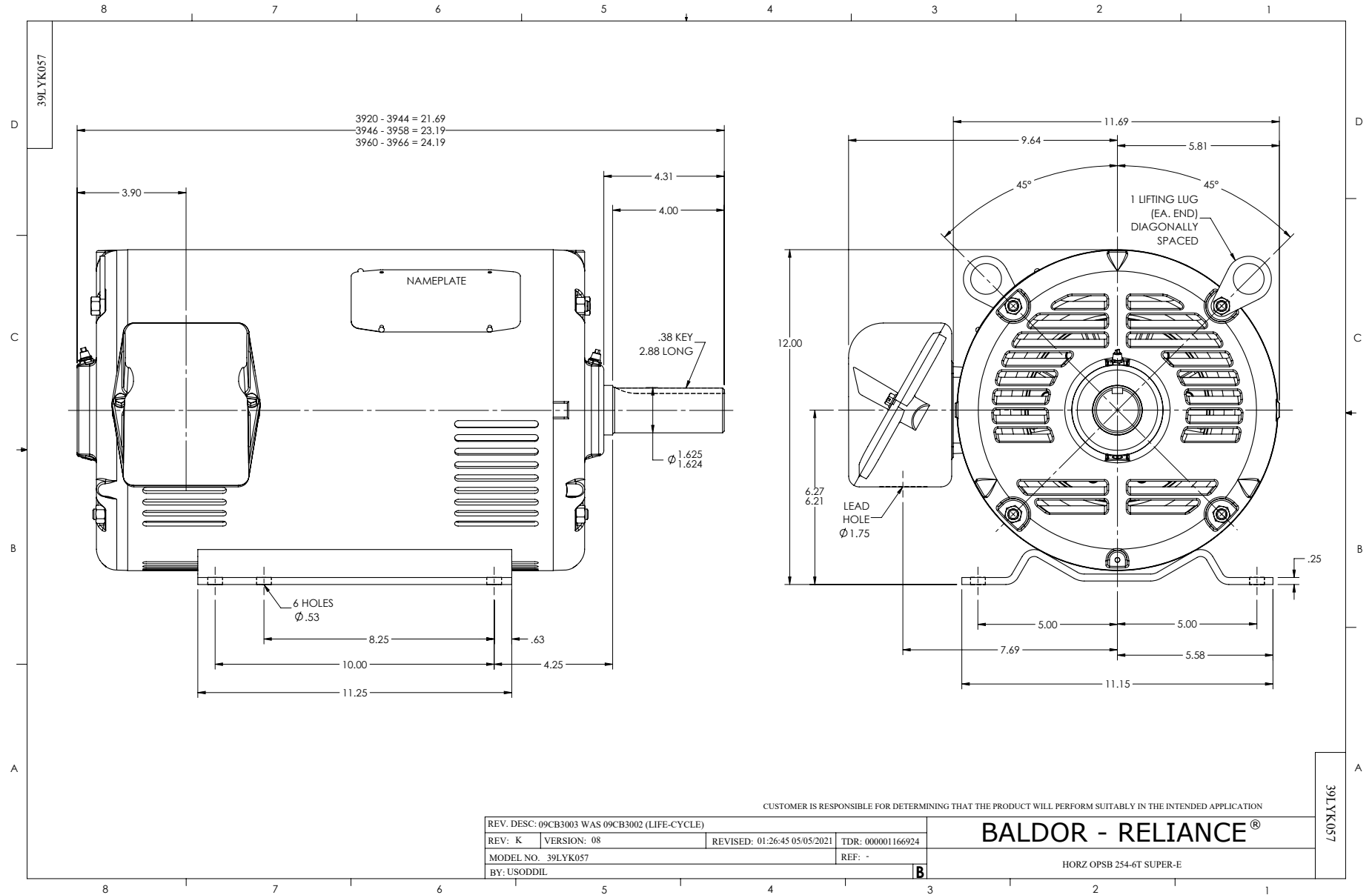
Winding: 39WGX910-R001		Type: 3962M		Enclosure: OPSB	
Nameplate Data			460 V, 60 Hz: High Voltage Connection		
Rated Output (HP)	7.5	Full Load Torque	45 LB-FT		
Volts	230/460	Start Configuration	direct on line		
Full Load Amps	23.4/11.7	Breakdown Torque	113 LB-FT		
R.P.M.	880	Pull-up Torque	74.6 LB-FT		
Hz	60 Phase	3	Locked-rotor Torque	94.2 LB-FT	
NEMA Design Code	B KVA Code	G	Starting Current	57.1 A	
Service Factor (S.F.)	1.15		No-load Current	6.56 A	
NEMA Nom. Eff.	89.5 Power Factor	67	Line-line Res. @ 25°C	1.2778 Ω	
Rating - Duty	40C AMB-CONT		Temp. Rise @ Rated Load	26°C	
S.F. Amps			Temp. Rise @ S.F. Load	32°C	

Load Characteristics 460 V, 60 Hz, 7.5 HP

% of Rated Load	25	50	75	100	125	150	S.F.
Power Factor	30	48	60	67	70	72	69
Efficiency	83.7	89.2	90.3	90.1	89.1	87.6	89.5
Speed	895.5	891.1	886.3	881.3	875.1	867.5	878
Line amperes	7.07	8.19	9.81	11.7	14.1	16.9	13.1

Performance Graph at 460V, 60Hz, 7.5HP Typical performance - Not guaranteed values





CD0005



LOW VOLTAGE
(2Y)



LINE

HIGH VOLTAGE
(1Y)



LINE

NOTES:

1. INTERCHANGE ANY TWO LINE LEADS TO REVERSE ROTATION.
2. OPTIONAL THERMOSTATS ARE PROVIDED WHEN SPECIFIED.
3. ACTUAL NUMBER OF INTERNAL PARALLEL CIRCUITS MAY BE A MULTIPLE OF THOSE SHOWN ABOVE.
4. LEAD COLORS ARE OPTIONAL. LEADS MUST ALWAYS BE NUMBERED AS SHOWN.

REV. DESC: REVISE TO SHOW OPTIONAL COLORS			
REV. LTR: E	BY: JLP	REVISED: 01/19/99 10:15	TDR: 0171435
900000		FILE: AAA00005140	MDL: -
		MTL: -	

BALDOR ELECTRIC Co.

3PH, DV, 9 LEADS

CD0005

Marketing maintained PDF of MN416:

<http://www.baldor.com/support/Literature/Load.ashx/MN416?ManNumber=MN416>