

**BALDOR® • RELIANCE** 

**Product Information Packet**

**EM2513T-CI**

**15HP, 1765RPM, 3PH, 60HZ, 254T, 0936M, OPEN, F1**

Part Detail							
Revision:	P	Status:	PRD/A	Change #:		Proprietary:	No
Type:	AC	Elec. Spec:	09WGZ565	CD Diagram:	CD0180	Mfg Plant:	
Mech. Spec:	09B01	Layout:	09LYB001	Poles:	04	Created Date:	03-08-2010
Base:	RG	Eff. Date:	10-27-2020	Leads:	9#12		

Specs			
Catalog Number:	EM2513T-CI	Heater Indicator:	No Heater
Product Complexity Level:	Standard	Insulation Class:	F
Enclosure:	OPEN	Inverter Code:	Inverter Ready
Frame:	254T	KVA Code:	G
Frame Material:	Iron	Lifting Lugs:	Standard Lifting Lugs
Output @ Frequency:	15.000 HP @ 60 HZ	Locked Bearing Indicator:	No Locked Bearing
Synchronous Speed @ Frequency:	1800 RPM @ 60 HZ	Motor Lead Quantity/Wire Size:	9 @ 12 AWG
Voltage @ Frequency:	460.0 V @ 60 HZ	Motor Lead Termination:	Flying Leads
	230.0 V @ 60 HZ	Motor Type:	0936M
XP Class and Group:	None	Mounting Arrangement:	F1
XP Division:	Not Applicable	Power Factor:	85
Agency Approvals:	CSA	Product Family:	General Purpose
	CSA EEV	Pulley End Bearing Type:	Ball
	UR	Pulley Face Code:	Standard
Auxillary Box:	No Auxillary Box	Pulley Shaft Indicator:	Standard
Auxillary Box Lead Termination:	None	Rodent Screen:	None
Base Indicator:	Rigid	Shaft Extension Location:	Pulley End
Bearing Grease Type:	Polyrex EM (-20F +300F)	Shaft Ground Indicator:	No Shaft Grounding

<b>Blower:</b>	None	<b>Shaft Rotation:</b>	Reversible
<b>Current @ Voltage:</b>	37.500 A @ 208.0 V	<b>Shaft Slinger Indicator:</b>	No Slinger
	35.600 A @ 230.0 V	<b>Speed Code:</b>	Single Speed
	17.800 A @ 460.0 V	<b>Motor Standards:</b>	NEMA
<b>Design Code:</b>	B	<b>Starting Method:</b>	Direct on line
<b>Drip Cover:</b>	No Drip Cover	<b>Thermal Device - Bearing:</b>	None
<b>Duty Rating:</b>	CONT	<b>Thermal Device - Winding:</b>	None
<b>Electrically Isolated Bearing:</b>	Not Electrically Isolated	<b>Vibration Sensor Indicator:</b>	No Vibration Sensor
<b>Feedback Device:</b>	NO FEEDBACK	<b>Winding Thermal 1:</b>	None
<b>Front Shaft Indicator:</b>	None	<b>Winding Thermal 2:</b>	None

Nameplate NP3554LUA										
CAT.NO.	EM2513T-CI				P/N				ENCL	OPEN
SPEC.	09B001Z565G1		CC	010A	FRAME	254T		SER.NO.		
HP	15		CLASS	F	HZ	60				
RPM	1765		PH	3	DES	B				
VOLTS	230/460			CODE	G	ODE BRG	6208	DE BRG	6309	
AMPS	35.6/17.8			USABLE AT 208V	37.5					
RATING	40C AMB-CONT			NEMA-NOM-EFF	93			GREASE	POLYREX EM	
PF	85		SER.F.	1.15		CT30-60(2:1) VT3-60(20:1)				
USABLE AT	50HZ 15HP 190/380V 42/21A				SF	1.0				
HTR-VOLTS		HTR-AMPS		MAX. SPACE HEATER TEMP.						

Parts List		
Part Number	Description	Quantity
SA191940	SA 09B001Z565G1	1.000 EA
RA179595	RA 09B001Z565G1	1.000 EA
09CB3000SP	CONDUIT BOX CAST	1.000 EA
10XN2520K12	1/4-20 X.75 GRD 5	2.000 EA
HW1001A25	LOCKWASHER 1/4, ZINC PLT .493 OD, .255 I	2.000 EA
WD1000B16	T&B CX70TN OR L70P TERMINAL LUG	1.000 EA
59XW2520G07	.25-20X.44,HEX SER WSHR,TAPTITE 2,GREEN	1.000 EA
09AD2000A01	45R DEFLECTOR, 309 OPEN	1.000 EA
HW1001A10	WASHER, #10 SPLT LK, ZN X	3.000 EA
HW1001A10	WASHER, #10 SPLT LK, ZN X	3.000 EA
09EP1200A01	FR ENDPLATE, MACH	1.000 EA
10XN3816K52	3/8-16 X 3-1/4 HEX HEAD CAP SCREW GRD 5	4.000 EA
HW1001A38	LOCKWASHER 3/8, ZINC PLT .688 OD, .382 I	4.000 EA
HW5100A08	W3118-035 WVY WSHR (WB)	1.000 EA
09EP1201A01	PU ENDPLATE, MACH	1.000 EA
09AD2000A01	45R DEFLECTOR, 309 OPEN	1.000 EA
10XN3816K52	3/8-16 X 3-1/4 HEX HEAD CAP SCREW GRD 5	4.000 EA
HW1001A38	LOCKWASHER 3/8, ZINC PLT .688 OD, .382 I	4.000 EA
09CB3500SP	CONDUIT BOX LID, CAST	1.000 EA
51XW2520A12	.25-20 X .75, TAPTITE II, HEX WSHR SLTD	2.000 EA
HW2501G25	KEY, 3/8 SQ X 2.875	1.000 EA
LB1115N	LABEL,LIFTING DEVICE (ON ROLLS)	1.000 EA
51XW1032A06	10-32 X .38, TAPTITE II, HEX WSHR SLTD S	3.000 EA
MN416A01	TAG-INSTAL-MAINT no wire (1200/bx) 1/21	1.000 EA

<b>Parts List (continued)</b>		
<b>Part Number</b>	<b>Description</b>	<b>Quantity</b>
LD7020D09	LEAD SET, 12AWG, 9 LEAD, 20" LONG LEADS	1.000 EA
HW4500A03	GREASE FITTING, .125 NPT 1610(ALEMITE) 8	1.000 EA
HW4500A20	1/8NPT SL PIPE PLUG	1.000 EA
HA4051A00	PLASTIC CAP FOR GREASE FITTING	1.000 EA
MJ1000A02	GREASE, MOBIL POLYREX EM - 124047	0.080 LB
51XW1032A06	10-32 X .38, TAPTITE II, HEX WSHR SLTD S	3.000 EA
HW4500A03	GREASE FITTING, .125 NPT 1610(ALEMITE) 8	1.000 EA
HW4500A20	1/8NPT SL PIPE PLUG	1.000 EA
HA4051A00	PLASTIC CAP FOR GREASE FITTING	1.000 EA
MG1000Y03	MUNSELL 2.53Y 6.70/ 4.60, GLOSS 20,	0.050 GA
85XU0407S04	4X1/4 U DRIVE PIN STAINLESS	4.000 EA
LB1119N	WARNING LABEL	1.000 EA
LC0181	CONNECTION LABEL	1.000 EA
NP3554LUA	SS SUPER-E VPWM INV READY UL CSA-EEV PRE	1.000 EA
09PA1000	PACKAGING GROUP COMBINED PRINT	1.000 EA

**AC Induction Motor Performance Data**

Record # 73293

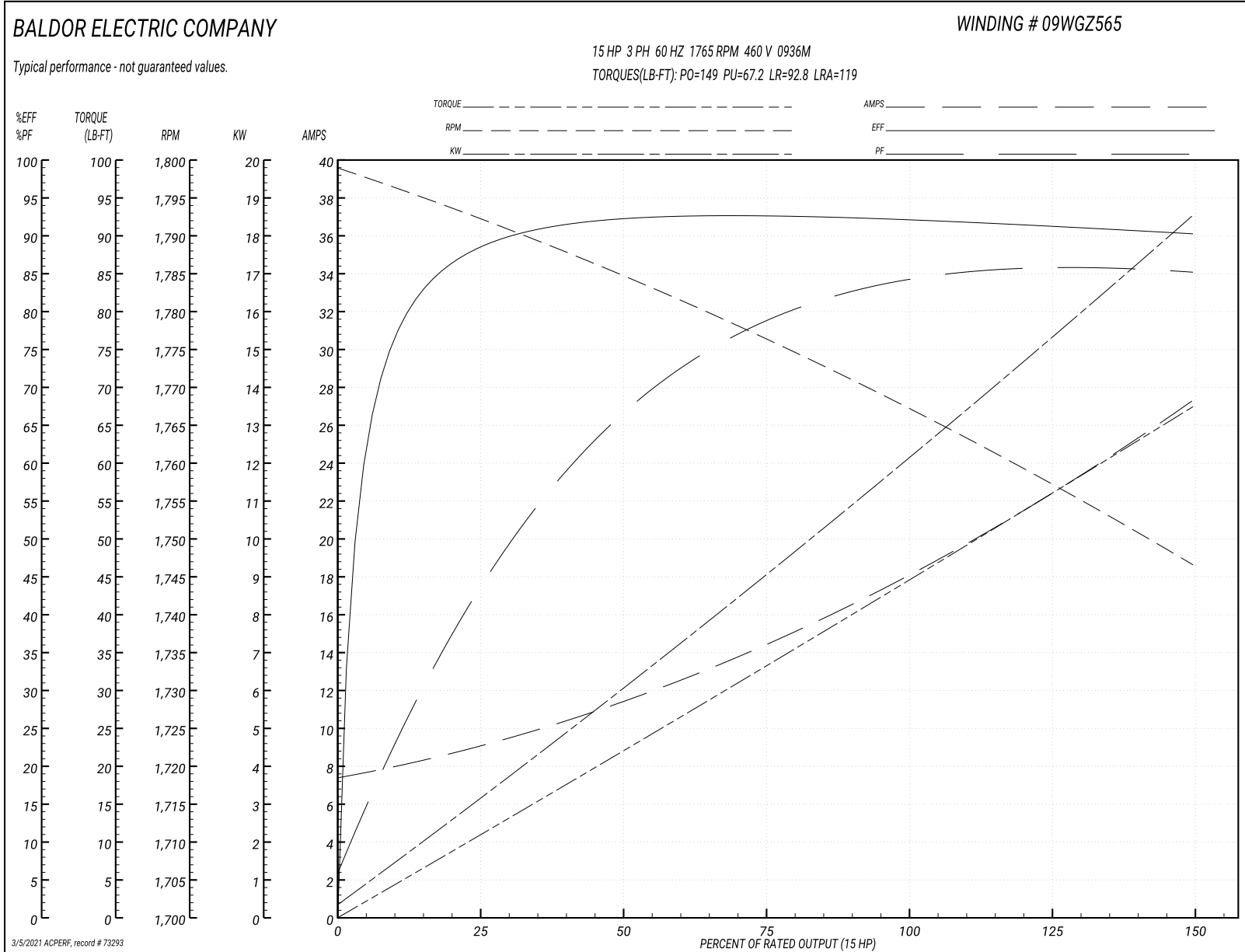
Typical performance - not guaranteed values

Winding: 09WGZ565-R001			Type: 0936M	Enclosure: OPEN	
<b>Nameplate Data</b>			<b>460 V, 60 Hz: High Voltage Connection</b>		
Rated Output (HP)	15		Full Load Torque	44.55 LB-FT	
Volts	230/460		Start Configuration	direct on line	
Full Load Amps	35.6/17.8		Breakdown Torque	149 LB-FT	
R.P.M.	1765		Pull-up Torque	67.2 LB-FT	
Hz	60 Phase	3	Locked-rotor Torque	92.8 LB-FT	
NEMA Design Code	B KVA Code	G	Starting Current	119 A	
Service Factor (S.F.)	1.15		No-load Current	7.66 A	
NEMA Nom. Eff.	93 Power Factor	85	Line-line Res. @ 25°C	0.64931 Ω	
Rating - Duty	40C AMB-CONT		Temp. Rise @ Rated Load	41°C	
S.F. Amps			Temp. Rise @ S.F. Load	50°C	
			Locked-rotor Power Factor	34.2	

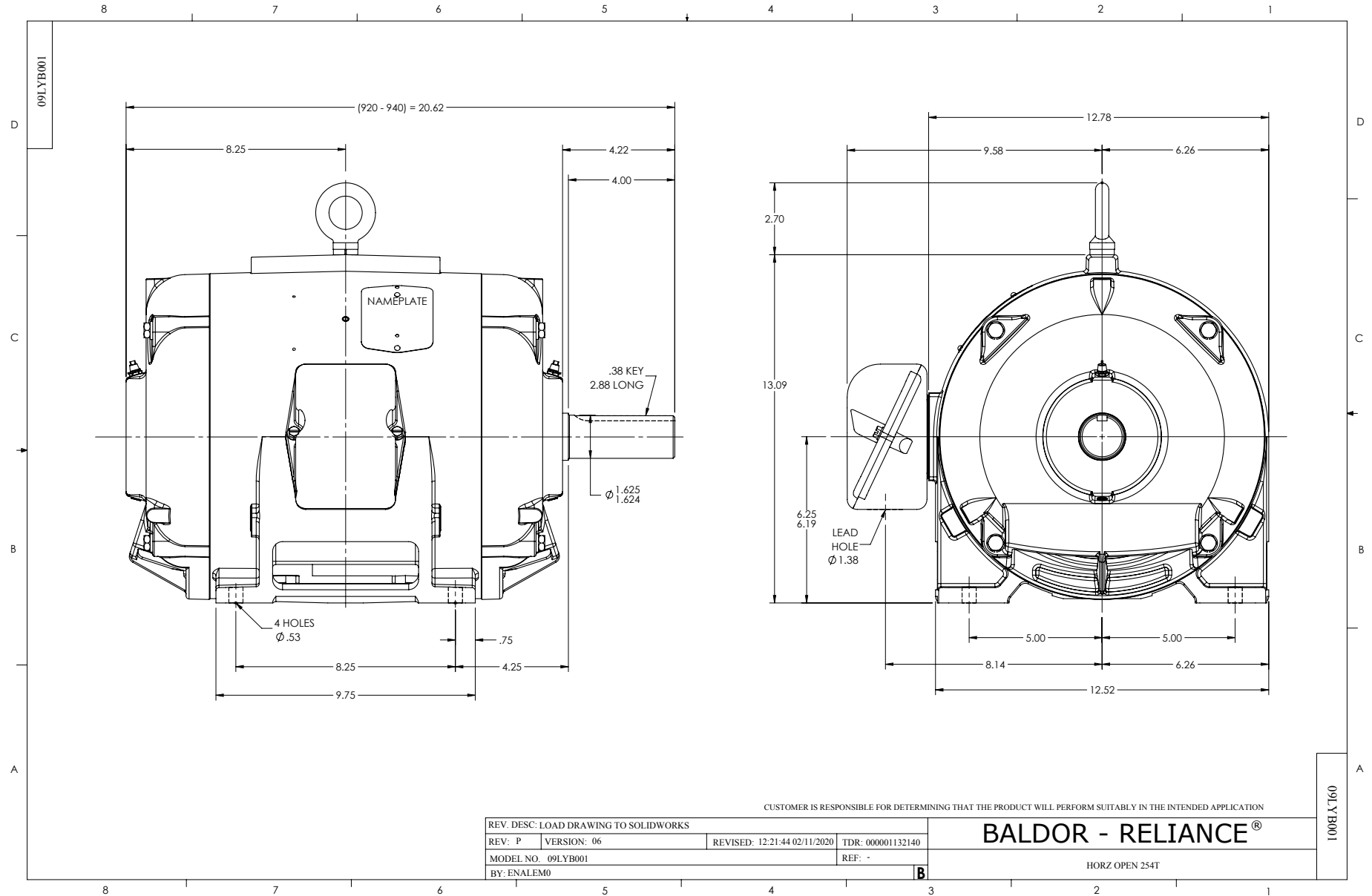
**Load Characteristics 460 V, 60 Hz, 15 HP**

% of Rated Load	25	50	75	100	125	150	S.F.
Power Factor	45	68	78	83	85	86	84
Efficiency	88.2	92	92.6	92.2	91.3	90.2	91.7
Speed	1792.4	1784.7	1776.2	1767.3	1757.4	1746.5	1761
Line amperes	8.76	11.2	14.5	18.3	22.6	27.1	20.9

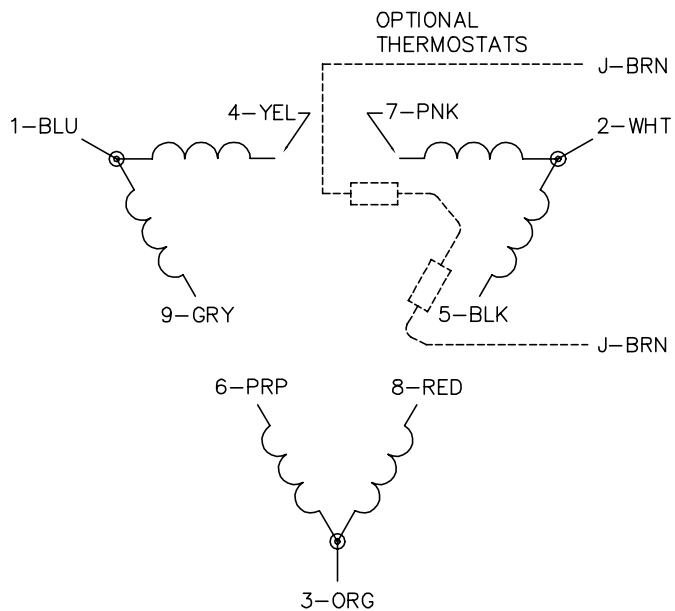
Performance Graph at 460V, 60Hz, 15.0HP Typical performance - Not guaranteed values



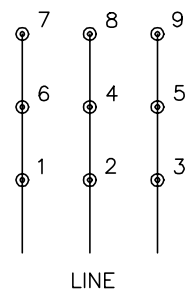




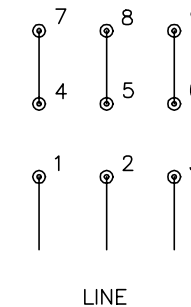
CD0180



LOW VOLTAGE  
(2D)



HIGH VOLTAGE  
(1D)



NOTES:

1. INTERCHANGE ANY TWO LINE LEADS TO REVERSE ROTATION.
2. OPTIONAL THERMOSTATS ARE PROVIDED WHEN SPECIFIED.
3. ACTUAL NUMBER OF INTERNAL PARALLEL CIRCUITS MAY BE A MULTIPLE OF THOSE SHOWN ABOVE.
4. LEAD COLORS ARE OPTIONAL. LEADS MUST ALWAYS BE NUMBERED AS SHOWN.

CD0180

REV. DESC: ADD CLASS CONN00000007

REV. LTR: D

VERSION: 01

TDR: 000001099922

FILE: \AAA\00005\148

REVISED: 10:25:29 02/19/2019

BY: ENBRIRO

MTL: -



**BALDOR - RELIANCE®**

3PH, DV, 9 LEADS, DELTA CONNECTION

SH 1 of 1

Marketing maintained PDF of MN416:

<http://www.baldor.com/support/Literature/Load.ashx/MN416?ManNumber=MN416>