

BALDOR® • RELIANCE 

Product Information Packet

IDDRPM404006R1

400HP, 1175/2000RPM, 460V, 3PH, DPGFV, RL4034

Part Detail							
Revision:	H	Status:	PRD/A	Change #:		Proprietary:	No
Type:	AC	Elec. Spec:	L6220A	CD Diagram:	422927-001	Mfg Plant:	
Mech. Spec:		Layout:	619654-001	Poles:	04	Created Date:	04-09-2015
Base:		Eff. Date:	05-03-2022	Leads:			

Specs			
Catalog Number:	IDDRPM404006R1		
Enclosure:	DPFV		
Frame:	RL4034		
Frame Material:	Exposed Laminations		
Motor Letter Type:	Three Phase		
Output @ Frequency:	400.000 @ 40 HZ		
	400.000 HP @ 40 HZ		
Synchronous Speed @ Frequency:	1200 RPM @ 40 HZ		
Voltage @ Frequency:	460.0 V @ 40 HZ		
	460 V @ 40 HZ		
Agency Approvals:	CCSA US		
Auxillary Box:	No Auxillary Box		
Base Indicator:	Rigid		
Bearing Grease Type:	Polyrex EM (-20F +300F)		
Current @ Voltage:	460.000 A @ 460.0 V		
Duty Rating:	CONT		
Enclosure Modification:	FORCE VENT		
Feedback Device:	NO FEEDBACK		

Frame Prefix:	RL		
Heater Indicator:	No Heater		
Insulation Class:	H		
Mounting Arrangement:	F1		
Product Family:	General Industrial		
Pulley End Bearing Type:	Ball		
Pulley Face Code:	Standard		
Shaft Ground Indicator:	Shaft Grounding		
Shaft Rotation:	Reversible		
Motor Standards:	NEMA		
Thermal Device - Bearing:	None		
Thermal Device - Winding:	Normally Closed Thermostat		

Nameplate 000613006MY										
	DUTY	HP	RPM	AMPS	VOLTS	HZ				
	CONT	400	1175	460	460	40				
	CONT	400	2000	464	460	68.2				
CAT.NO.	IDDRPM404006R1			SPEC. NO.	P40R1330					
SER.NO.				FR	RL 4034	INSUL	H			
PH.	3	MAX SAFE SPEED	3750	AMB.	40	MIN. AMB.	-25			
DESIGN NO.	L6220A			TYPE		ENCL.	DP			
S.F.	1.00			D.E. BRG.	95BC02J30X					
ENCL MOD	FORCE VENT			O.D.E. BRG.	6316/C3VL0241					

Parts List		
Part Number	Description	Quantity
WS286590	WS P40R1330	1.000 EA
RA282822	RA P40R1330	1.000 EA
033775004EA	DRSCR #6-1/4 304 S.S.	4.000 EA
000613006MY	NP-RPMAC INVERTER DUTY	1.000 EA
LB1613	LABEL, QR CODE, ADHESIVE LABEL	1.000 EA
000692000XM	LABEL QR CODE	1.000 EA
422927001	C/D LABEL	1.000 EA
004824015A	GREASE POLYREX EM	0.900 LB
034690002AL	1/4 SQ.HD.PIPE PLUG	1.000 EA
034690002AL	1/4 SQ.HD.PIPE PLUG	1.000 EA
035000001A	ALFTG 1/8" 1610-BL	1.000 EA
035000001A	ALFTG 1/8" 1610-BL	1.000 EA
036100090KA	HSHCS BRACKET LE	4.000 EA
036100100KA	HSHCS BRACKET LE	4.000 EA
036140001F	M30-3.5 X 45MM EYEBOLT	2.000 EA
036500013AB	M16 X 2.0 HX NUT,ODE BRKT 304589	4.000 EA
BP5248	BP5248	2.000 EA
036500013AB	M16 X 2.0 HX NUT,ODE BRKT 304589	4.000 EA
418150003A	GREASE FITTING CAP	2.000 EA
419912001B	W WASHER	1.000 EA
036000016DB	HHCS	4.000 EA
HA4054	SHORT T-DRAIN FITTING, .125" N.P.T.	1.000 EA
HA4054	SHORT T-DRAIN FITTING, .125" N.P.T.	1.000 EA
609830005ACM	TBOLT	2.000 EA

Parts List (continued)		
Part Number	Description	Quantity
609830005ACX	STUD,FRAME,FL4034	2.000 EA
708532016A	AIR BAFFLE	1.000 EA
807532003AA	BRKT,RL400	1.000 EA
BP5068BJ01	BRUSH, .187 X .187 X 1.00	2.000 EA
807532004AA	BRKT,RL400	1.000 EA
000613006NT	NAME PLATE IEC	1.000 EA
032018004DK	HHCS,DRIP COVER	4.000 EA
032018006CK	HHCS 3/8-16X3/4L PLATED 411409	4.000 EA
034017014AB	LCKW 3/8 STD. PLATED	4.000 EA
036000012JB	M8-1.25 X 12MM HXHDC	3.000 EA
036000020HD	HHCS M6X20MM LONG 304S.S	8.000 EA
036000020JB	HHCS M8-1.25X20L PLTD-250	6.000 EA
036000020JD	HHCS M8X20MM LONG 304S.S	5.000 EA
036000025JB	HHCS M8X25MM LONG PLATED	4.000 EA
036000055KB	M10-1.5 X 55MM HHCS	4.000 EA
036600008AD	FLTWSHR,T BLK SPT	8.000 EA
036620010AB	M10 EXT. TOOTH LK WASHER	1.000 EA
417733036C	GASKT,C/BOX BACKPLATE,REF 706310063B	1.000 EA
410978010F	FLANGE, INLET BLOWER HSG	1.000 EA
410978015A	GRILL, INLET FLANGE	1.000 EA
417733004G	GASKT	2.000 EA
417733013B	GASKT (REK P/N 189486)	1.000 EA
417733014C	GASKT (REK P/N 187215)	1.000 EA
418014014T	ADAPT,C/BOX 418014014XT	1.000 EA

Product Information Packet: IDDRPM404006R1 - 400HP,1175/2000RPM,460V,3PH,DPGFV,RL4034

418018074A	GROUND LABEL G100 METRIC 160 D.C.	1.000 EA
418057256C	HHCS M10 25MM 440 IEC	1.000 EA
422919133	HHCVR KIT,C400,DE,LOUVERED	1.000 EA
422919133	HHCVR KIT,C400,DE,LOUVERED	1.000 EA
422919137	HHCVR KIT,C400,DE,SOLID,X/T	1.000 EA
422919137	HHCVR KIT,C400,DE,SOLID,X/T	1.000 EA
422919418	HHCVR KIT,RL400,ODE/DE,C/BOX MTG	1.000 EA
610490001BW	32M 2P TEFC VER 145TCZ S/P32-6 SUPER E	1.000 EA
415000103E	T/LUG #4AWG-1/0AWG W/HOLE FOR .375 BOLT	1.000 EA
611917002P	GASKT C400	1.000 EA
611965001E	BLOWER WHEEL	1.000 EA
613439048A	C/BOX,ADAPT,BACKPLATE	1.000 EA
706305301A	GUARD, SHAFT	1.000 EA
706310058B	CBCVR(REK P/N 187296)	1.000 EA
706310389B	ENTRY PLATE 706310389AB	1.000 EA
706310063B	CBOX (REK)	1.000 EA
706313062B	BLHSG FE MTG C400	1.000 EA
000640000P	TAG WINDING THERMOST	1.000 EA
004824007CQR	C2 PAINT SYSTEM MEDIUM GRAY CHARCOAL MET	3.000 EA
034180046KA	KEY 7/8X7/8X5-3/4L	1.000 EA
418018116	WARNING PLATE	1.000 EA
LB1549	LABEL, BLANK 1.375 X 2.250 IMPRINTABLE	1.000 EA

REL S.O.	-	VOLTS	460	ENCLOSURE	DPFV	WYE	CONN EQ	CKT OHMS	PER PHASE
FRAME	L4034	AMPS	460	MAX SAFE RPM	3750	(AT BASE RATING, 25 °C)			
HP	400	DUTY	CONT	IM (AMPS)	130	R1	.0107	X1	.0686
BASE SPEED	1175	S.F.	1.0	P.F. @NL/FL	.043/.891	R2	.00767	X2	.0660
PHASE/HERTZ	3/40	AMB °C/INSUL	40/H	WK ² (lb-ft ²)	73			XM	2.10

RATED FULL LOAD DATA

	RPM	HP	TORQUE LB-FT	FUND VOLTS	FREQ-HZ	AMPS
BASE SPEED	1177	400	1785	460	40	457
MAX SPEED	2002	400	1049	460	68.2	464
MIN SPEED	0	0	1785	14.8	.770	457

LOAD PERFORMANCE AT BASE SPEED

	RPM	HP	TORQUE LB-FT	FUND VOLTS	FREQ-HZ	AMPS
NO LOAD	1200	0	0	460	40	127
1/4	1195	100	440	460	40	168
1/2	1189	200	883	460	40	250
3/4	1183	300	1331	460	40	348
FULL LOAD	1177	400	1785	460	40	457
O/L	1162	593	2678	460	40	693

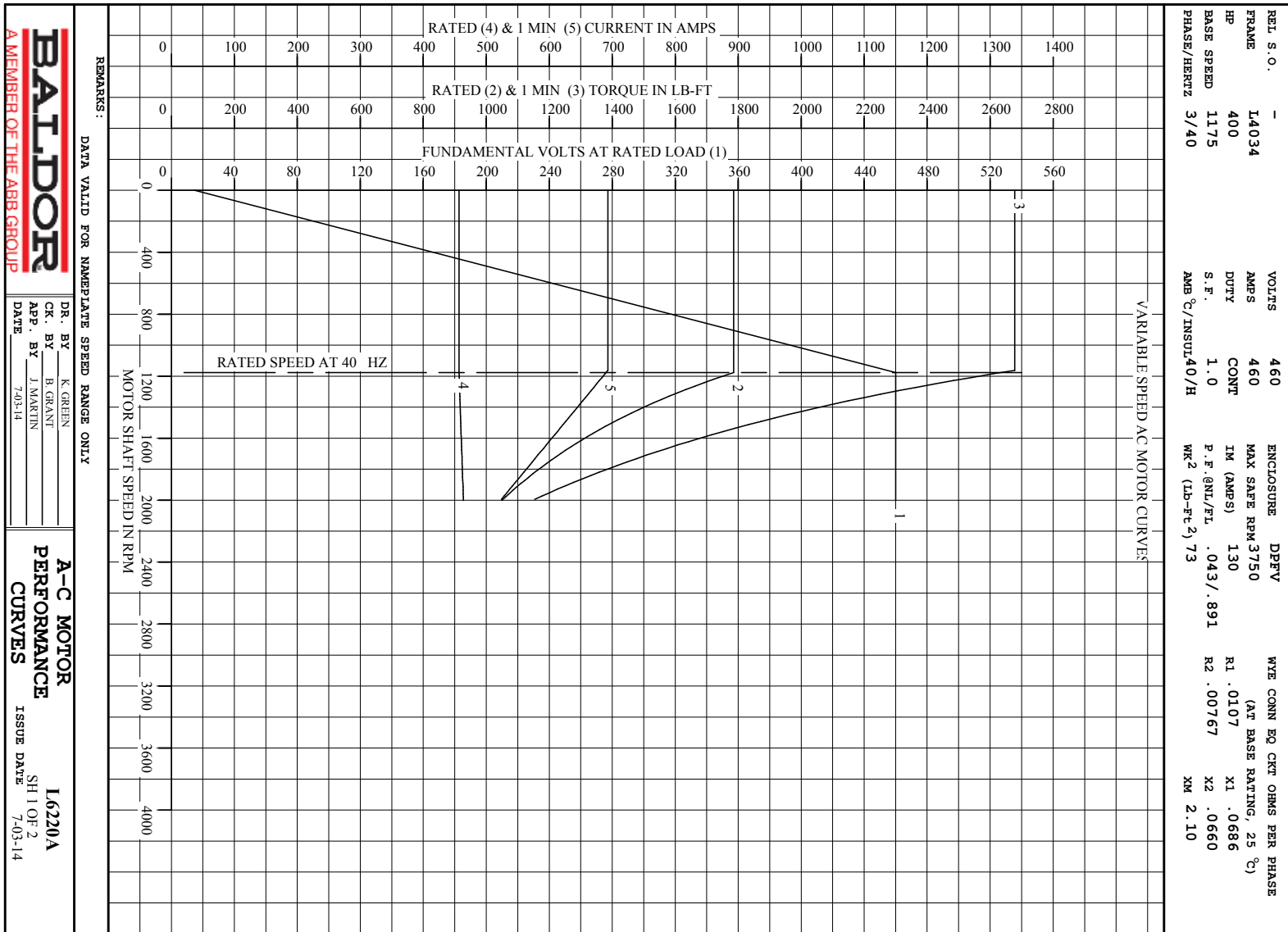
REMARKS:

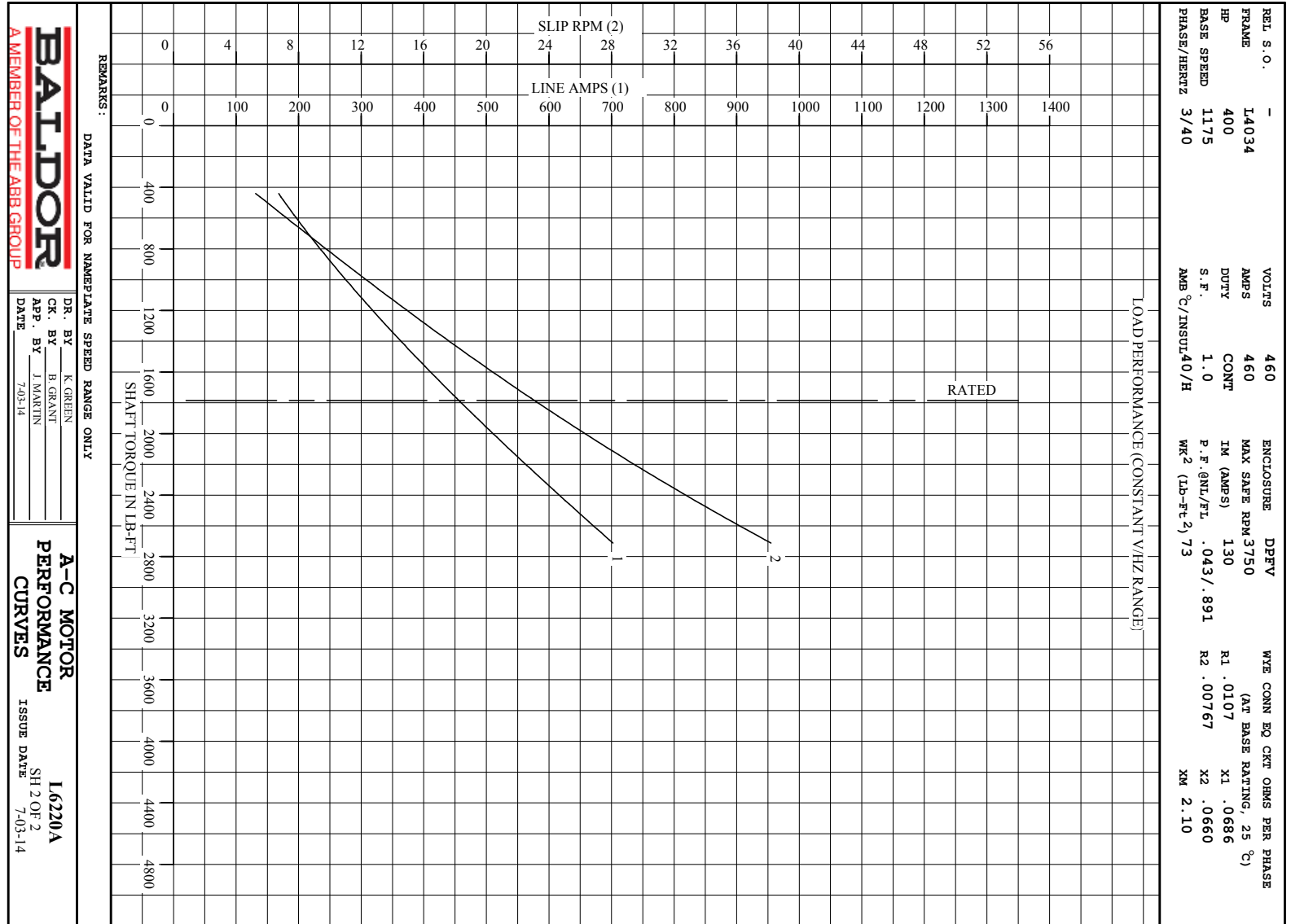


DR. BY K. GREEN
 CK. BY B. GRANT
 APP. BY J. MARTIN
 DATE 7-03-14

**A-C MOTOR
 PERFORMANCE
 DATA**
 ISSUE DATE 7-03-14

A MEMBER OF THE ABB GROUP

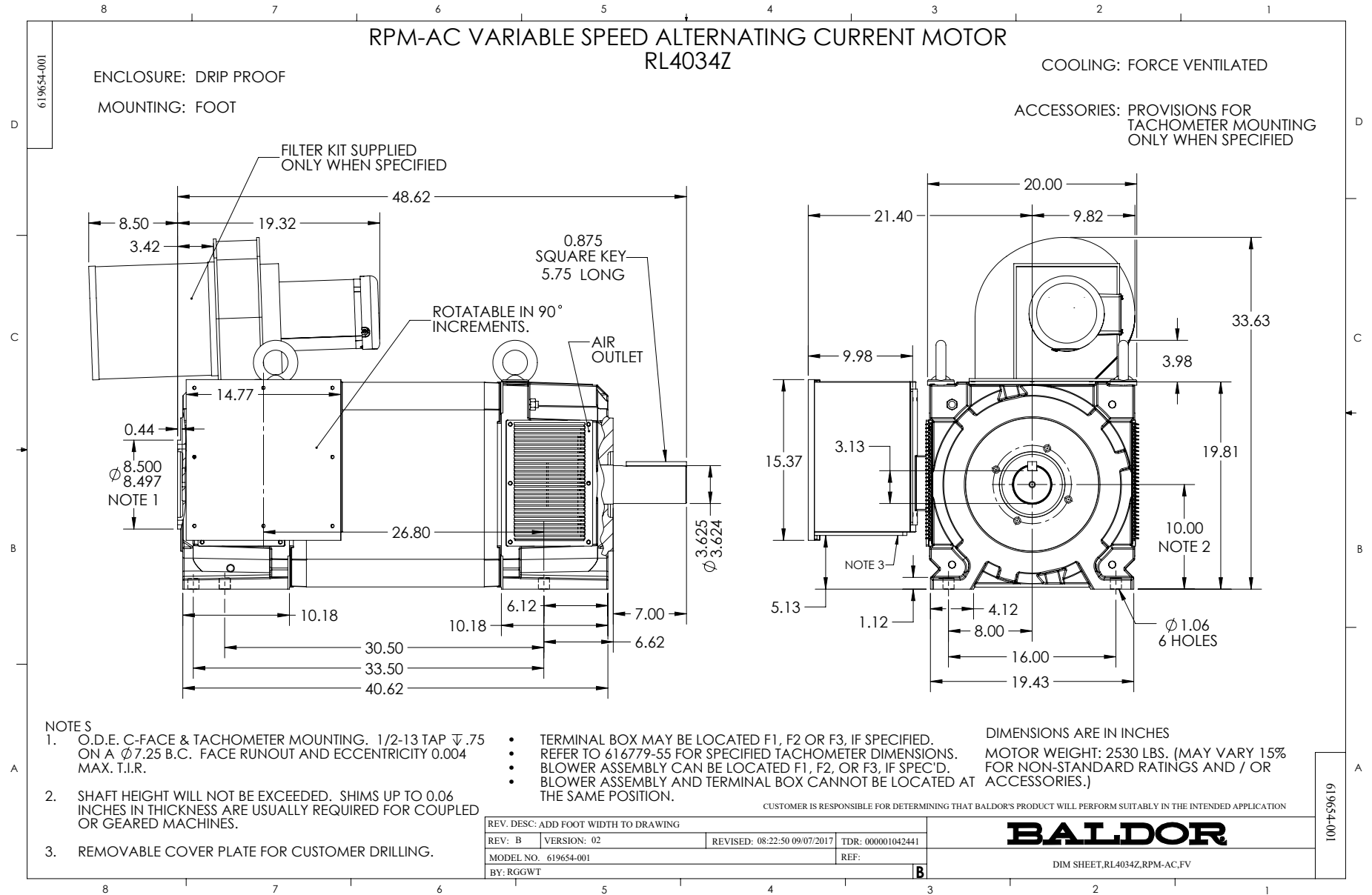




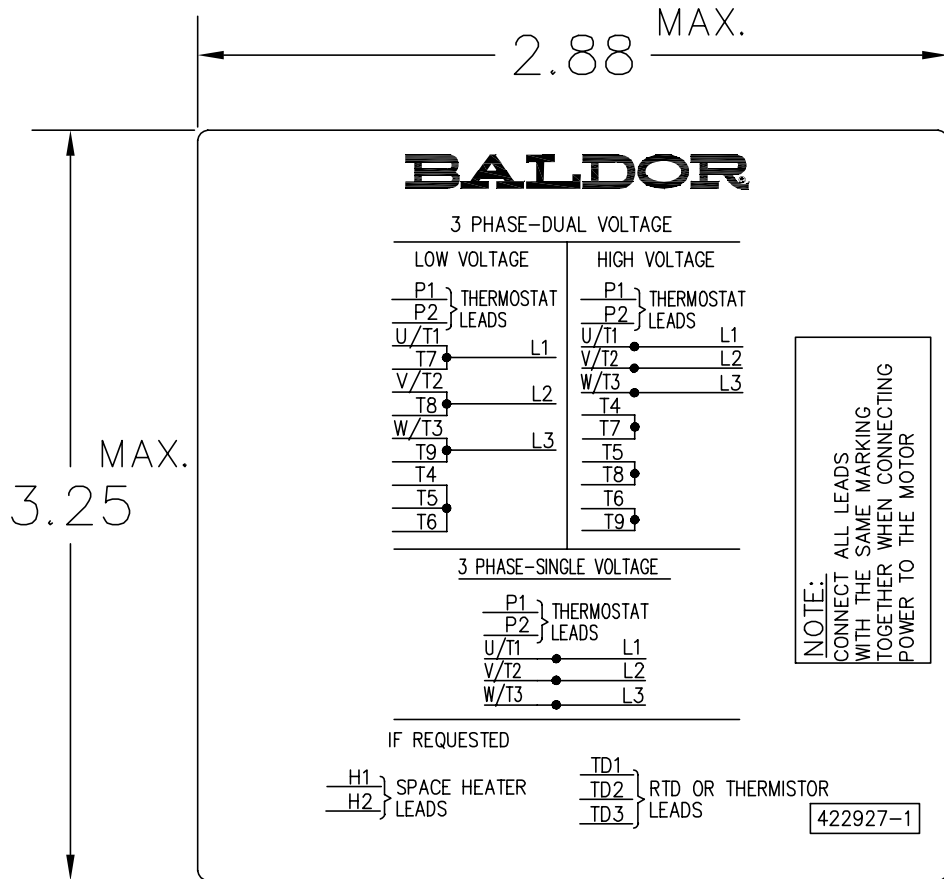
BALDOR
A MEMBER OF THE ABB GROUP

DR. BY K GREEN
CR. BY B GRANT
APP. BY J MARTIN
DATE 7-03-14

A-C MOTOR
PERFORMANCE
CURVES
ISSUE DATE 7-03-14
I6220A
SH 2 OF 2



422927-001



NOTE:
DATA TO BE SIZED
SO THAT IT FITS INTO
MATERIAL DECAL
DIMENSIONS. MAKE
LETTERS & NUMBERS
AS LARGE AS POSSIBLE.

MATERIAL: CERAMATIC DGF-P4
PERMA GRIP ADHESIVE

ALL LETTERS, NUMBERS
AND LINES TO BE BLACK
ON WHITE BACKGROUND.

422927-001

REV. DESC: CHANGE BACKGROUND COLOR FROM GOLD TO WHITE		
REV. LTR: B	VERSION: 02	TDR: 000000788708
FILE: \RGG\00000\203	REVISED: 08:09:29 03/04/2013	
MTL: -	BY: RGGWT	

BALDOR

EXTERNAL CONNECTION LABEL

SH 1 of 1

Marketing maintained PDF of MN406:

<http://www.baldor.com/support/Literature/Load.ashx/MN406?ManNumber=MN406>