

BALDOR® • RELIANCE 

Product Information Packet

M3613T-50

5HP,2850RPM,3PH,50HZ,184T,3634M,TEFC,F1

Part Detail							
Revision:	AA	Status:	INA/A	Change #:		Proprietary:	No
Type:	AC	Elec. Spec:	36WGW462	CD Diagram:	CD0044	Mfg Plant:	
Mech. Spec:	36A001	Layout:	36LYA001	Poles:	02	Created Date:	
Base:	RG	Eff. Date:	03-19-2012	Leads:	12#16		

Specs			
Catalog Number:	M3613T-50	Insulation Class:	B
Enclosure:	TEFC	Inverter Code:	Not Inverter
Frame:	184T	KVA Code:	K
Output @ Frequency:	5.000 HP @ 50 HZ	Lifting Lugs:	No Lifting Lugs
Synchronous Speed @ Frequency:	3000 RPM @ 50 HZ	Locked Bearing Indicator:	No Locked Bearing
Voltage @ Frequency:	440.0 V @ 50 HZ	Motor Lead Quantity/Wire Size:	12 @ 16 AWG
	380.0 V @ 50 HZ	Motor Lead Exit:	Ko Box
	220.0 V @ 50 HZ	Motor Lead Termination:	Flying Leads
XP Division:	Not Applicable	Motor Type:	3634M
Agency Approvals:	UR	Mounting Arrangement:	F1
	CSA	Power Factor:	89
	CE	Product Family:	General Purpose
Auxillary Box:	No Auxillary Box	Pulley End Bearing Type:	Ball
Auxillary Box Lead Termination:	None	Pulley Face Code:	Standard
Base Indicator:	Rigid	Pulley Shaft Indicator:	Standard
Bearing Grease Type:	Polyrex EM (-20F +300F)	Rodent Screen:	None
Blower:	None	RoHS Status:	ROHS COMPLIANT
Current @ Voltage:	13.000 A @ 220.0 V	Shaft Extension Location:	Pulley End

	6.500 A @ 440.0 V	Shaft Ground Indicator:	No Shaft Grounding
	7.600 A @ 380.0 V	Shaft Rotation:	Reversible
Design Code:	B	Shaft Slinger Indicator:	No Slinger
Drip Cover:	No Drip Cover	Speed Code:	Single Speed
Duty Rating:	CONT	Motor Standards:	NEMA
Electrically Isolated Bearing:	Not Electrically Isolated	Starting Method:	Direct on line
Feedback Device:	NO FEEDBACK	Thermal Device - Bearing:	None
Front Face Code:	Standard	Thermal Device - Winding:	None
Front Shaft Indicator:	None	Vibration Sensor Indicator:	No Vibration Sensor
Heater Indicator:	No Heater	Winding Thermal 1:	None
		Winding Thermal 2:	None

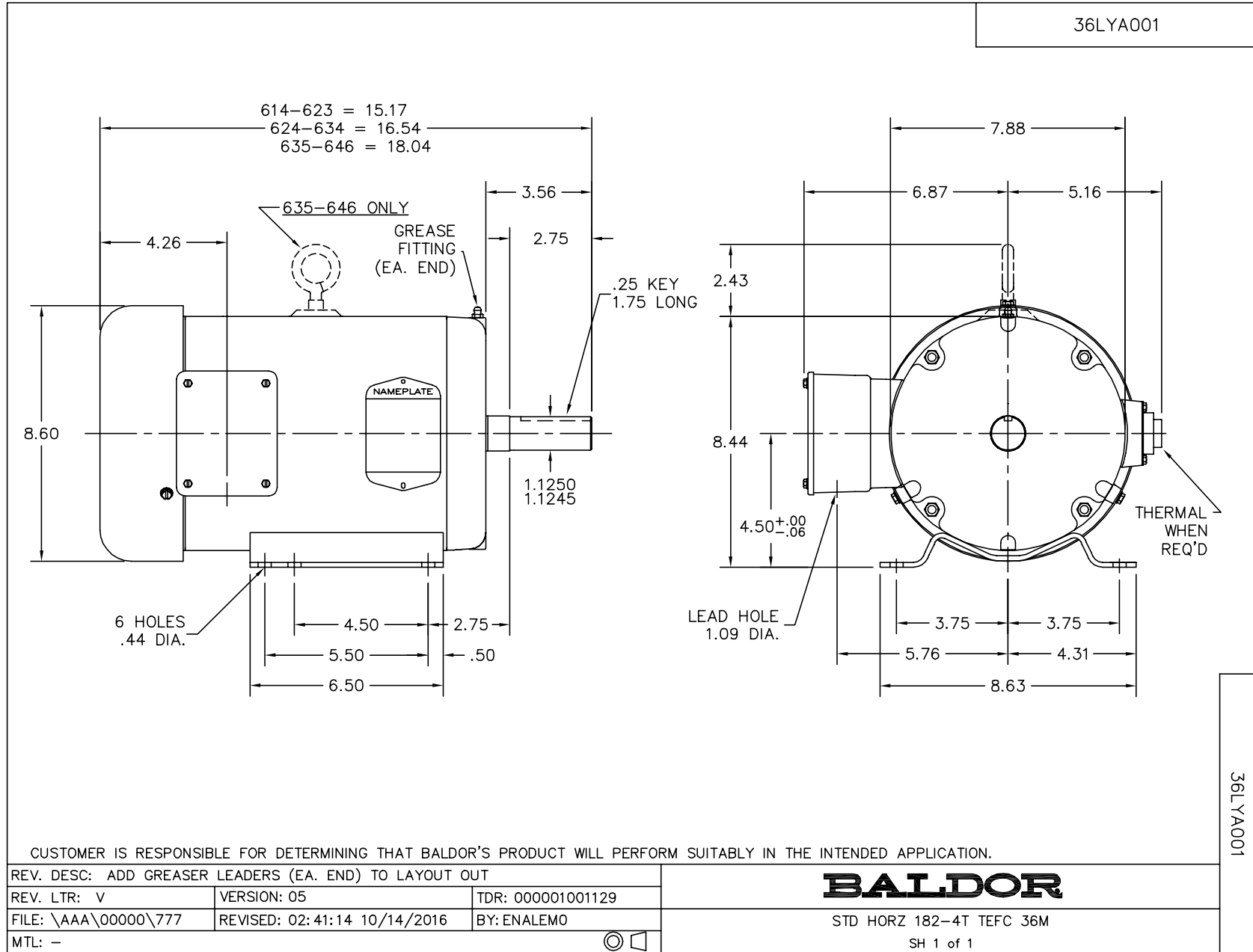
Nameplate NP1372L										
CAT.NO.										
SPEC.	36A01W462									
HP	5									
VOLTS	220/380/440									
AMP	13/7.6/6.5									
RPM	2850									
FRAME	184T				HZ	50			PH	3
SER.F.	1.15		CODE	K	DES	-		CL	B	
NEMA-NOM-EFF	85		PF	89						
RATING	40C AMB-CONT									
CC									USABLE AT 208V	
DE	6206				ODE	6205				
ENCL	TEFC		SN							
	IP44									

Parts List		
Part Number	Description	Quantity
SA033888	SA 36A01W462	1.000 EA
RA029916	RA 36A01W462	1.000 EA
36CB3004	36 CB CASTING W/1.09 DIA LEAD HOLE @ 6:0	1.000 EA
36GS1000SP	GASKET-CONDUIT BOX, .06 THICK #SV-330 LE	1.000 EA
51XB1016A08	10-16X 1/2HXWSSLD SERTYB	2.000 EA
11XW1032G06	10-32 X .38, TAPTITE II, HEX WSHR SLTD U	1.000 EA
HW3001B01	BRASS CUP WASHER, FOR #10 SCREW	1.000 EA
36EP3104A01	FREP MACH ASSEMBLY FOR ROUTING	1.000 EA
HW4500A01	1641B(ALEMITE)400 UNIV, GREASE FITT	1.000 EA
HW5100A05	WVY WSHR F/205 & 304 BRGS	1.000 EA
36EP3100A01SP	PUEP ASSEMBLY FOR ROUTING PURPOSES	1.000 EA
HW4500A01	1641B(ALEMITE)400 UNIV, GREASE FITT	1.000 EA
XY2520A12	1/4-20 HEX NUT, DIRECTIONAL SERRATIONS	4.000 EA
51XB1214A16	12-14X1.00 HXWSSLD SERTYB	1.000 EA
36FH4009A102	IEC FH GREASER PRIMED	1.000 EA
51XW1032A06	10-32 X .38, TAPTITE II, HEX WSHR SLTD S	3.000 EA
36CB4516	36 LIPPED CB LID - GALVANNEAL	1.000 EA
37GS1001SP	GASKET, CONDUIT BOX LID, .06 THICK LEXID	1.000 EA
51XW0832A07	8-32 X .44, TAPTITE II, HEX WSHR SLTD SE	4.000 EA
HW2501E16	KEY, 1/4 SQ X 1.750	1.000 EA
HA7000A02	KEY RETAINER RING, 1 1/8 DIA, 1 3/8 DIA	1.000 EA
85XU0407S04	4X1/4 U DRIVE PIN STAINLESS	2.000 EA
MJ1000A02	GREASE, MOBIL POLYREX EM - 124047	0.050 LB
MG1000G27	MED CHARCOAL METALLIC GREY 400-0096	0.022 GA

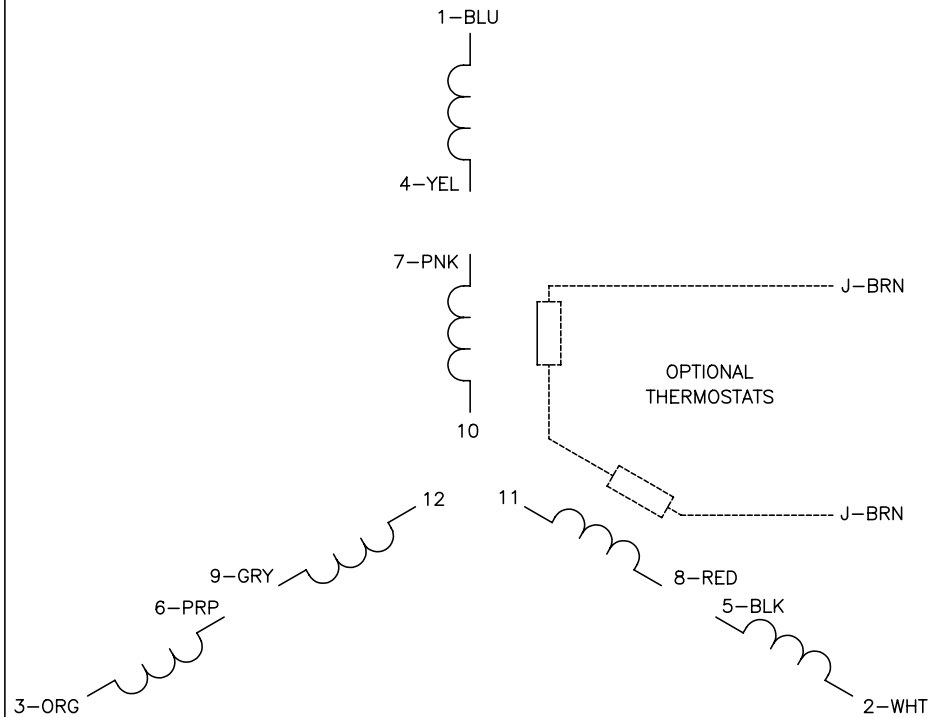
Parts List (continued)		
Part Number	Description	Quantity
HA3101A25	THRUBOLT 1/4-20 X 11.000 OHIO ROD	4.000 EA
MN416A01	TAG-INSTAL-MAINT no wire (1200/bx) 3/19	1.000 EA
35FN3002A04SP	EXFN, PLASTIC, 6.376 OD, .906 ID W/KEY	1.000 EA
LB1119N	WARNING LABEL	1.000 EA
LB1125C01	STD (STOCK) CARTON LABEL BALDOR WITH FLA	1.000 EA
LC0044	CONNECTION DIAGRAM	1.000 EA
NP1372L	ALUM UL CSA CE CC	1.000 EA
36PA1000	PKG GRP, PRINT PK1016A06	1.000 EA
LB1417	LABEL CARTON 6X4 PERFORATED BLANK ROLLS	1.000 EA

Accessories		
Part Number	Description	Multiplier
36-3301	C FACE KIT	A8
36EP1304A62SP	FLANGE MTD ENDPLATE 182-4TD -ENCL (LESS	A8

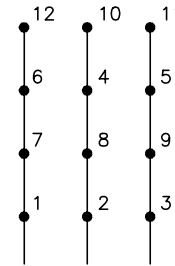
No performance data has been
assigned to this product.



CD0044

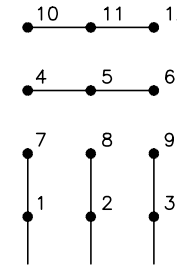


LOW VOLTAGE
(2D)



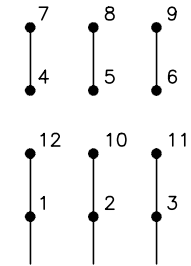
LINE

MED. VOLTAGE
(2Y)



LINE

HIGH VOLTAGE
(1D)



LINE

NOTES:

1. INTERCHANGE ANY TWO LINE LEADS TO REVERSE ROTATION.
2. OPTIONAL THERMOSTATS ARE PROVIDED WHEN SPECIFIED.
3. ACTUAL NUMBER OF INTERNAL PARALLEL CIRCUITS MAY BE A MULTIPLE OF THOSE SHOWN ABOVE.
4. LEAD COLORS ARE OPTIONAL. LEADS MUST ALWAYS BE NUMBERED AS SHOWN.

REV. DESC: REVISE TO SHOW OPTIONAL COLORS			
REV. LTR: G	BY: JLP	REVISED: 01/19/99 4:09	TDR: 0171435
CD0044		FILE: AAA00008373	MDL: -
		MTL: -	

BALDOR ELECTRIC Co.

3PH, TV, 12 LEADS, 2D/2Y/1D

CD0044