

BALDOR[®] • RELIANCE 

Product Information Packet

VM3153T

.75HP, 1140RPM, 3PH, 60HZ, 143TC, 3428M, OPEN

| Part Detail | | | | | | | |
|-------------|---------|-------------|------------|-------------|--------|---------------|----|
| Revision: | V | Status: | PRD/A | Change #: | | Proprietary: | No |
| Type: | AC | Elec. Spec: | 34WGW012 | CD Diagram: | CD0005 | Mfg Plant: | |
| Mech. Spec: | 34-3508 | Layout: | 34LY3508 | Poles: | 06 | Created Date: | |
| Base: | N | Eff. Date: | 04-22-2021 | Leads: | 9#18 | | |

| Specs | | | |
|---------------------------------|-------------------------|--------------------------------|-----------------|
| Catalog Number: | VM3153T | Insulation Class: | B |
| Enclosure: | OPEN | Inverter Code: | Not Inverter |
| Frame: | 143TC | KVA Code: | K |
| Frame Material: | Steel | Lifting Lugs: | No Lifting Lugs |
| Output @ Frequency: | .750 HP @ 60 HZ | Locked Bearing Indicator: | Locked Bearing |
| Synchronous Speed @ Frequency: | 1200 RPM @ 60 HZ | Motor Lead Quantity/Wire Size: | 9 @ 18 AWG |
| Voltage @ Frequency: | 460.0 V @ 60 HZ | Motor Lead Exit: | Ko Box |
| | 230.0 V @ 60 HZ | Motor Lead Termination: | Flying Leads |
| XP Class and Group: | None | Motor Type: | 3428M |
| XP Division: | Not Applicable | Mounting Arrangement: | F1 |
| Agency Approvals: | CSA | Power Factor: | 59 |
| | UR | Product Family: | General Purpose |
| Auxillary Box: | No Auxillary Box | Pulley End Bearing Type: | Ball |
| Auxillary Box Lead Termination: | None | Pulley Face Code: | C-Face |
| Base Indicator: | No Mounting | Pulley Shaft Indicator: | Standard |
| Bearing Grease Type: | Polyrex EM (-20F +300F) | Rodent Screen: | None |
| Blower: | None | RoHS Status: | ROHS COMPLIANT |
| Current @ Voltage: | 1.500 A @ 460.0 V | Shaft Extension Location: | Pulley End |

| | | | |
|---------------------------------------|---------------------------|------------------------------------|---------------------|
| | 3.000 A @ 230.0 V | Shaft Ground Indicator: | No Shaft Grounding |
| | 3.300 A @ 208.0 V | Shaft Rotation: | Reversible |
| Design Code: | B | Shaft Slinger Indicator: | No Slinger |
| Drip Cover: | Drip Cover | Speed Code: | Single Speed |
| Duty Rating: | CONT | Motor Standards: | NEMA |
| Electrically Isolated Bearing: | Not Electrically Isolated | Starting Method: | Direct on line |
| Feedback Device: | NO FEEDBACK | Thermal Device - Bearing: | None |
| Front Face Code: | Drip Cover Mounting | Thermal Device - Winding: | None |
| Front Shaft Indicator: | None | Vibration Sensor Indicator: | No Vibration Sensor |
| Heater Indicator: | No Heater | Winding Thermal 1: | None |
| | | Winding Thermal 2: | None |

| Nameplate NP1256L | | | | | | | | | | |
|-------------------|--------------|--|------|----|-----|------|--|----------------|-----|---|
| CAT.NO. | VM3153T | | | | | | | | | |
| SPEC. | 34-3508W12 | | | | | | | | | |
| HP | .75 | | | | | | | | | |
| VOLTS | 230/460 | | | | | | | | | |
| AMP | 3/1.5 | | | | | | | | | |
| RPM | 1140 | | | | | | | | | |
| FRAME | 143TC | | | | HZ | 60 | | | PH | 3 |
| SER.F. | 1.15 | | CODE | K | DES | B | | CLASS | B | |
| NEMA-NOM-EFF | 77 | | PF | 59 | | | | | | |
| RATING | 40C AMB-CONT | | | | | | | | | |
| CC | | | | | | | | USABLE AT 208V | 3.3 | |
| DE | 6205 | | | | ODE | 6203 | | | | |
| ENCL | OPEN | | SN | | | | | | | |

| Parts List | | |
|---------------|--|----------|
| Part Number | Description | Quantity |
| SA008849 | SA 34-3508W12 | 1.000 EA |
| RA005296 | RA 34-3508W12 | 1.000 EA |
| NS2512A01 | INSULATOR, CONDUIT BOX X | 1.000 EA |
| 34CB3002A | CB CAST W/.88 DIA HOLE | 1.000 EA |
| 51XB1016A07 | 10-16 X 7/16 HXWSSLD SERTYB | 2.000 EA |
| 11XW1032G06 | 10-32 X .38, TAPTITE II, HEX WSHR SLTD U | 1.000 EA |
| 34EP3200A03SP | FR ENDPLATE, MACH | 1.000 EA |
| HW5100A03 | WAVY WASHER (W1543-017) | 1.000 EA |
| 34EP3903A03 | PU ENDPLATE, MACH | 1.000 EA |
| 34AD2000 | BAFFLE PLATE, STAMPED | 1.000 EA |
| 60XW0632A06 | 6-32 X 3/8 TORX HEAD SCREW TAPTITE II | 4.000 EA |
| 51XN1032A20 | 10-32 X 1 1/4 HX WS SL SR | 2.000 EA |
| 34FH4000A11 | DRIP COVER, STAMPED,PRIMER | 1.000 EA |
| 51XW1032A06 | 10-32 X .38, TAPTITE II, HEX WSHR SLTD S | 3.000 EA |
| 34CB4517 | CB LID 4 MTG HOLES .22 DIA STAMPED, FOR | 1.000 EA |
| 51XW0832A07 | 8-32 X .44, TAPTITE II, HEX WSHR SLTD SE | 4.000 EA |
| HW2501D13 | KEY, 3/16 SQ X 1.375 | 1.000 EA |
| HA7000A01 | KEY RETAINER 7/8" DIA SHAFT | 1.000 EA |
| MG1000G27 | MED CHARCOAL METALLIC GREY 400-0096 | 0.014 GA |
| 85XU0407S04 | 4X1/4 U DRIVE PIN STAINLESS | 2.000 EA |
| HA3100A38 | THRUBOLT 10-32 X 9.375 | 4.000 EA |
| MN416A01 | TAG-INSTAL-MAINT no wire (1200/bx) 1/21 | 1.000 EA |
| LC0005E01 | CONN.DIA./WARNING LABEL (LC0005/LB1119N) | 1.000 EA |
| NP1256L | ALUM UL CSA CC INDUSTRIAL MOTOR A60 | 1.000 EA |

| Parts List (continued) | | |
|-------------------------------|-------------------------------|-----------------|
| Part Number | Description | Quantity |
| PK3083 | STYROFOAM PACKING CRADLE | 1.000 EA |
| PK3088 | MICROFOAM, 8"X"8 PERF. SHEETS | 1.000 EA |
| 35PA1066 | PKG GRP, PRINT PK1008A06 | 1.000 EA |

AC Induction Motor Performance Data

Record # 57255

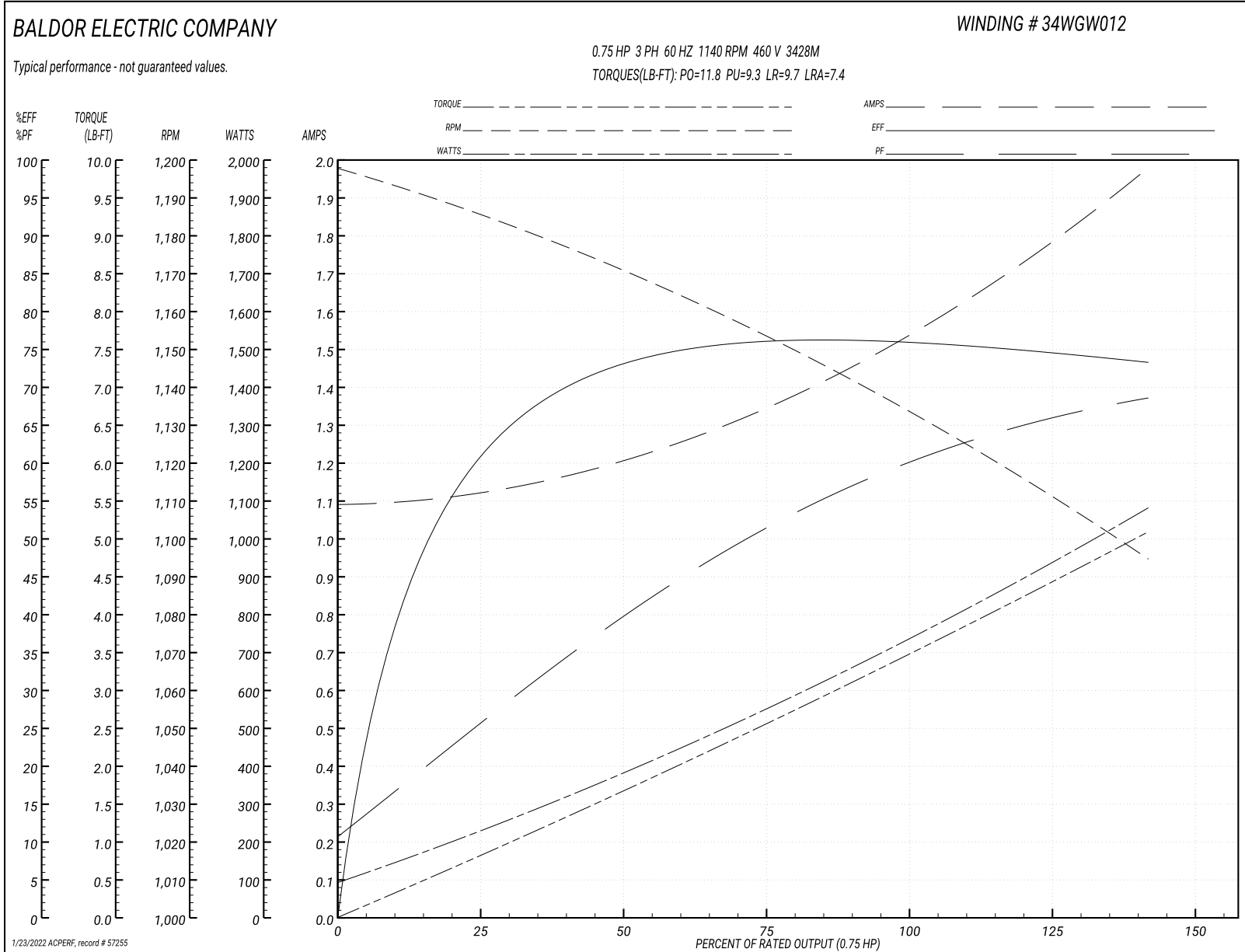
Typical performance - not guaranteed values

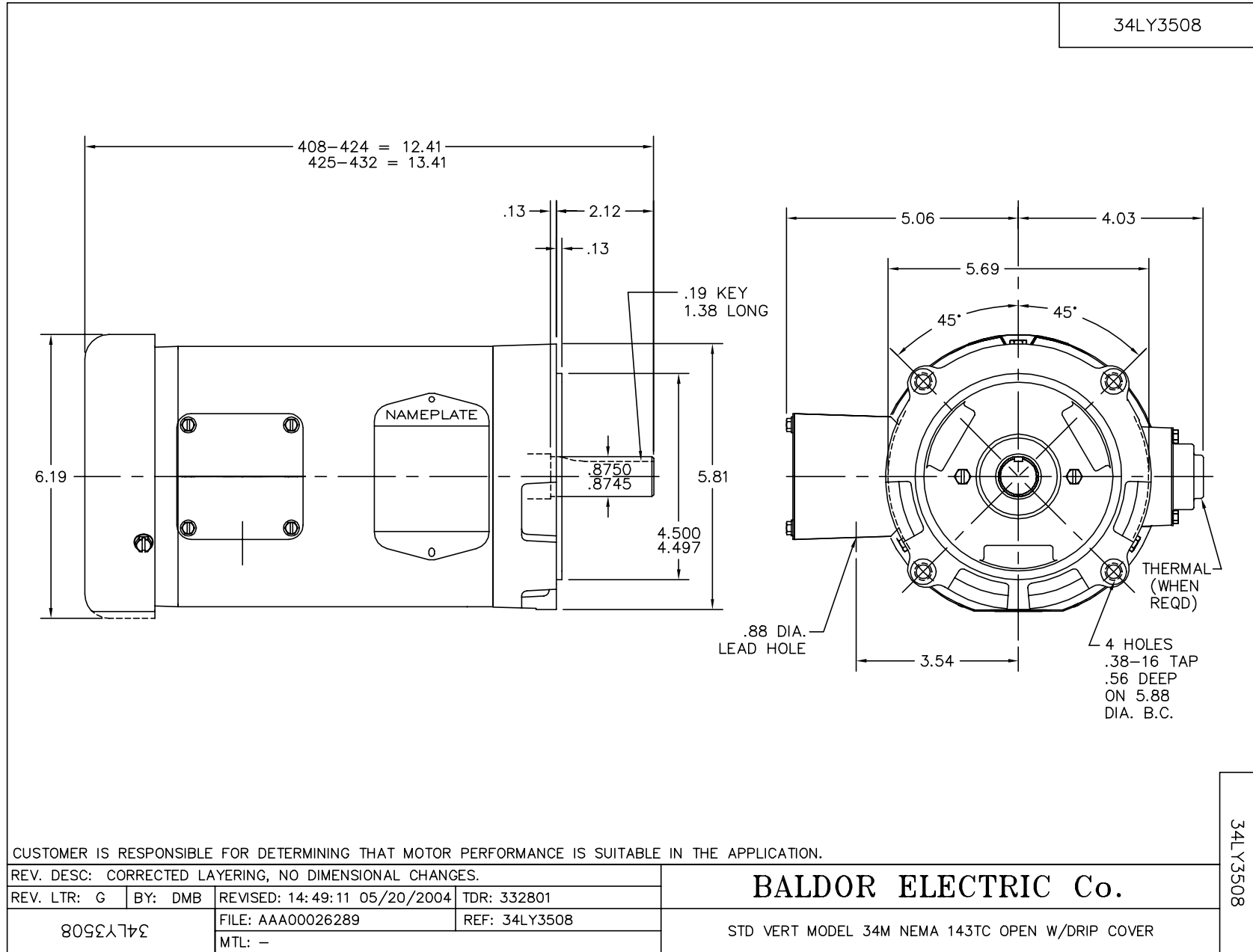
| Winding: 34WGW012-R038 | | | Type: 3428M | | | Enclosure: OPEN | | |
|-------------------------------|------------------------|----|----------------------------------|--|--|------------------------|--|--|
| Nameplate Data | | | | 460 V, 60 Hz: High Voltage Connection | | | | |
| Rated Output (HP) | .75 | | Full Load Torque | 3.4 LB-FT | | | | |
| Volts | 230/460 | | Start Configuration | direct on line | | | | |
| Full Load Amps | 3-1.5 | | Breakdown Torque | 11.8 LB-FT | | | | |
| R.P.M. | 1140 | | Pull-up Torque | 9.3 LB-FT | | | | |
| Hz | 60 Phase | 3 | Locked-rotor Torque | 9.7 LB-FT | | | | |
| NEMA Design Code | B KVA Code | K | Starting Current | 7.4 A | | | | |
| Service Factor (S.F.) | 1.15 | | No-load Current | 1.1 A | | | | |
| NEMA Nom. Eff. | 77 Power Factor | 59 | Line-line Res. @ 25°C | 21.9 Ω | | | | |
| Rating - Duty | 40C AMB-CONT | | Temp. Rise @ Rated Load | | | | | |
| | | | Locked-rotor Power Factor | 55.5 | | | | |

Load Characteristics 460 V, 60 Hz, 0.75 HP

| % of Rated Load | 25 | 50 | 75 | 100 | 125 | 150 | S.F. |
|------------------------|-----------|-----------|-----------|------------|------------|------------|-------------|
| Power Factor | 26 | 40 | 51 | 59 | 65 | 68 | 63 |
| Efficiency | 60 | 72 | 76 | 77 | 75 | 73 | 76 |
| Speed | 1185 | 1170 | 1155 | 1135 | 1115 | 1095 | 1125 |
| Line amperes | 1.1 | 1.2 | 1.4 | 1.5 | 1.7 | 2 | 1.6 |

Performance Graph at 460V, 60Hz, 0.75HP Typical performance - Not guaranteed values





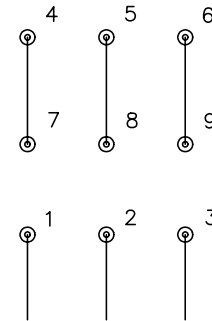
CD0005



LOW VOLTAGE
(2Y)



HIGH VOLTAGE
(1Y)



NOTES:

1. INTERCHANGE ANY TWO LINE LEADS TO REVERSE ROTATION.
2. OPTIONAL THERMOSTATS ARE PROVIDED WHEN SPECIFIED.
3. ACTUAL NUMBER OF INTERNAL PARALLEL CIRCUITS MAY BE A MULTIPLE OF THOSE SHOWN ABOVE.
4. LEAD COLORS ARE OPTIONAL. LEADS MUST ALWAYS BE NUMBERED AS SHOWN.

| | | | |
|---|---------|-------------------------|--------------|
| REV. DESC: REVISE TO SHOW OPTIONAL COLORS | | | |
| REV. LTR: E | BY: JLP | REVISED: 01/19/99 10:15 | TDR: 0171435 |
| 900000 | | FILE: AAA00005140 | MDL: - |
| | | MTL: - | |

BALDOR ELECTRIC Co.

3PH, DV, 9 LEADS

CD0005