

BALDOR® • RELIANCE 

Product Information Packet

AFL3524A

3HP,3450RPM,1PH,60HZ,145TZ,3535LC,TEAO

Part Detail							
Revision:	AE	Status:	PRD/A	Change #:		Proprietary:	No
Type:	AC	Elec. Spec:	35WGY039	CD Diagram:	CD0225A02	Mfg Plant:	
Mech. Spec:	35T906	Layout:	35LYT906	Poles:	02	Created Date:	06-22-2007
Base:	RG	Eff. Date:	08-01-2022	Leads:	2#14 A PH,3#18 B&J		

Specs			
Catalog Number:	AFL3524A	KVA Code:	H
Enclosure:	TEAO	Lifting Lugs:	No Lifting Lugs
Frame:	145TZ	Locked Bearing Indicator:	No Locked Bearing
Frame Material:	Steel	Motor Lead Quantity/Wire Size:	2 @ 14 AWG, A PH
Motor Letter Type:	Cap Start, Cap Run	Motor Lead Exit:	Terminal Panel Or Lead Hole
Output @ Frequency:	3.000 HP @ 60 HZ	Motor Lead Termination:	Flying Leads
Synchronous Speed @ Frequency:	3600 RPM @ 60 HZ	Motor Type:	3535LC
Voltage @ Frequency:	230.0 V @ 60 HZ	Mounting Arrangement:	F1
XP Class and Group:	None	Product Family:	General Purpose
XP Division:	Not Applicable	Product Type:	FARM DUTY
Agency Approvals:	UR	Pulley End Bearing Type:	Ball
	CSA	Pulley Face Code:	Standard
Auxillary Box:	No Auxillary Box	Pulley Shaft Indicator:	Tapped & Key
Auxillary Box Lead Termination:	None	Rodent Screen:	None
Base Indicator:	Rigid	RoHS Status:	ROHS COMPLIANT
Bearing Grease Type:	Polyrex EM (-20F +300F)	Shaft Extension Location:	Pulley End
Blower:	None	Shaft Ground Indicator:	No Shaft Grounding
Current @ Voltage:	15.000 A @ 230.0 V	Shaft Rotation:	Reversible: Connected Standard

Design Code:	-	Shaft Slinger Indicator:	No Slinger
Drip Cover:	No Drip Cover	Speed Code:	Single Speed
Duty Rating:	CONT	Motor Standards:	NEMA
Electrically Isolated Bearing:	Not Electrically Isolated	Starting Method:	Direct on line
Feedback Device:	NO FEEDBACK	Thermal Device - Bearing:	None
Front Face Code:	Terminal Panel	Thermal Device - Winding:	None
Front Shaft Indicator:	None	Vibration Sensor Indicator:	No Vibration Sensor
Heater Indicator:	No Heater	Winding Thermal 1:	Automatic Thermal Overload
Insulation Class:	B	Winding Thermal 1 Location:	SB
Inverter Code:	Not Inverter	Winding Thermal 2:	None

Nameplate NP1280L										
CAT.NO.	AFL3524A									
SPEC.	35T906Y039									
HP	3 AIR OVER									
VOLTS	230									
AMP	15									
RPM	3450									
FRAME	145TZ			HZ	60			PH	1	
SER.F.	1.00			CODE	H		DES	-	CL	B
NEMA-NOM-EFF				PF						
RATING	40C AMB-CONT									
CC							USABLE AT 208V	N/A		
DE	6205			ODE	6203					
ENCL	TEAO			SN						

AC Induction Motor Performance Data

Record # 10130

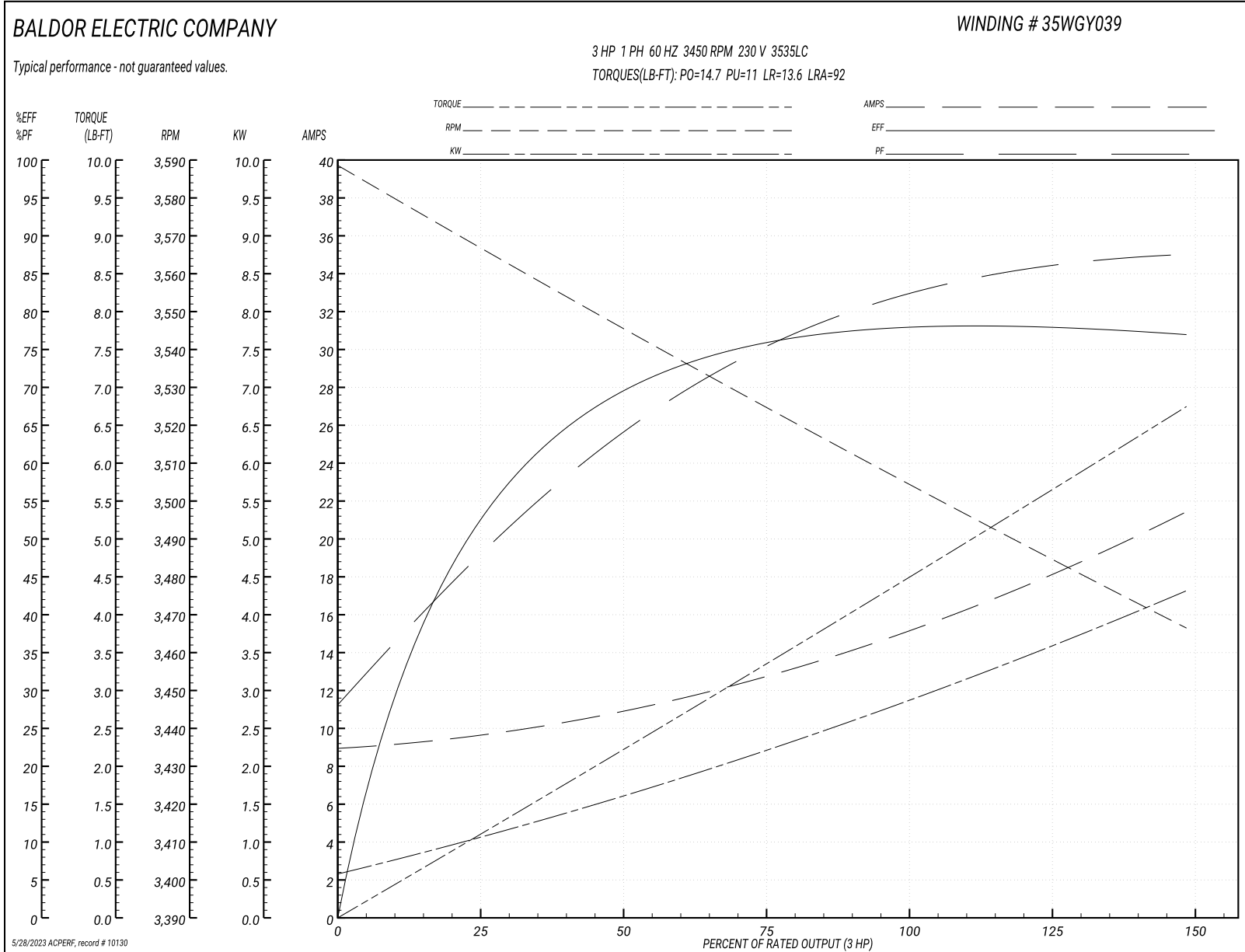
Typical performance - not guaranteed values

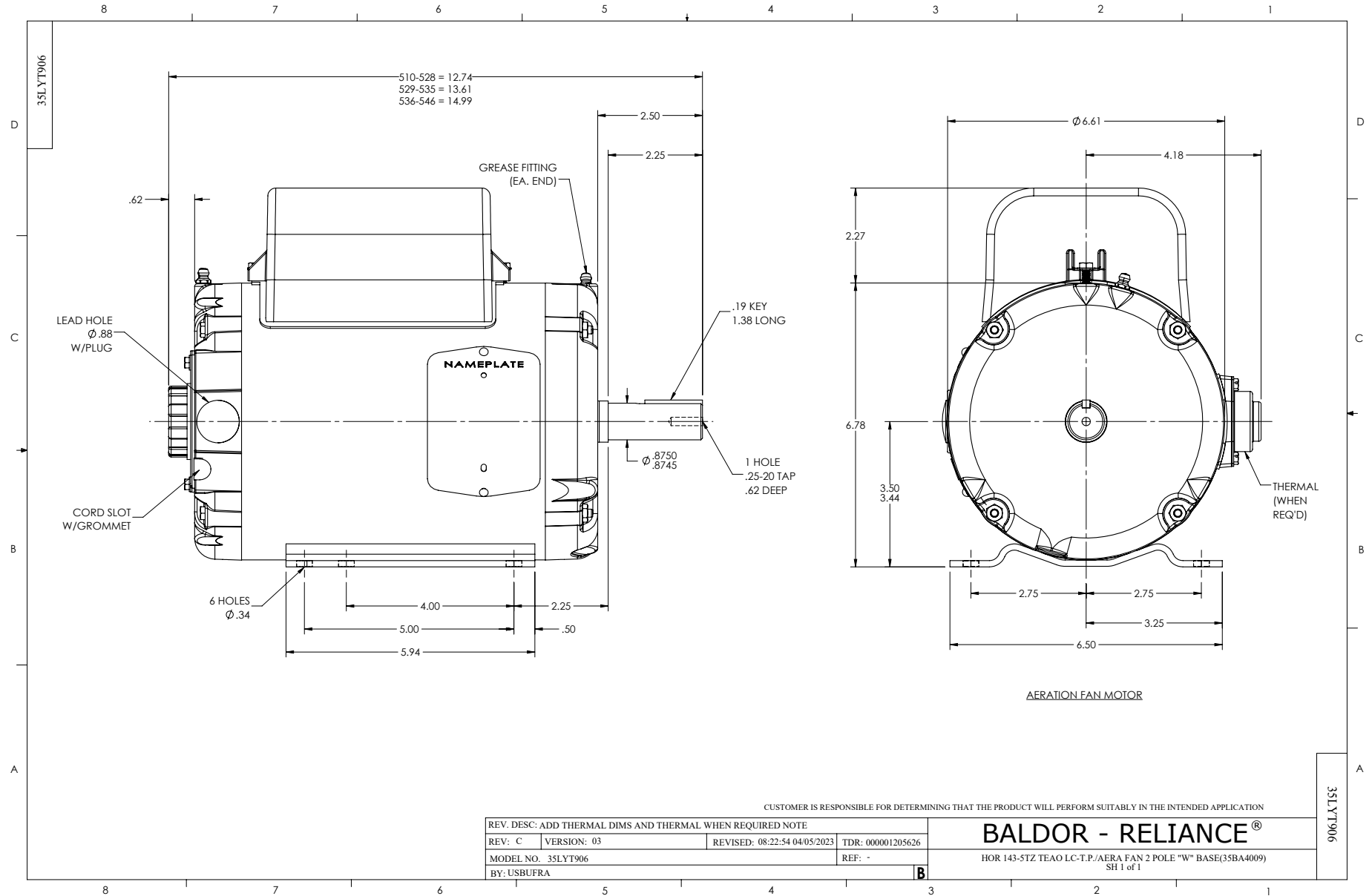
Winding: 35WGY039-R001			Type: 3535LC			Enclosure: TEAO		
Nameplate Data				230 V, 60 Hz: Single Voltage Motor				
Rated Output (HP)	3 AIR OVER		Full Load Torque	4.5 LB-FT				
Volts	230		Start Configuration	direct on line				
Full Load Amps	15		Breakdown Torque	14.7 LB-FT				
R.P.M.	3450		Pull-up Torque	11 LB-FT				
Hz	60 Phase	1	Locked-rotor Torque	13.6 LB-FT				
NEMA Design Code	- KVA Code	H	Starting Current	92 A				
Service Factor (S.F.)	1		No-load Current	9 A				
NEMA Nom. Eff.	0 Power Factor	0	Line-line Res. @ 25°C	0.577 Ω A Ph 2.53 Ω B Ph				
Rating - Duty	40C AMB-CONT		Temp. Rise @ Rated Load					

Load Characteristics 230 V, 60 Hz, 3 HP

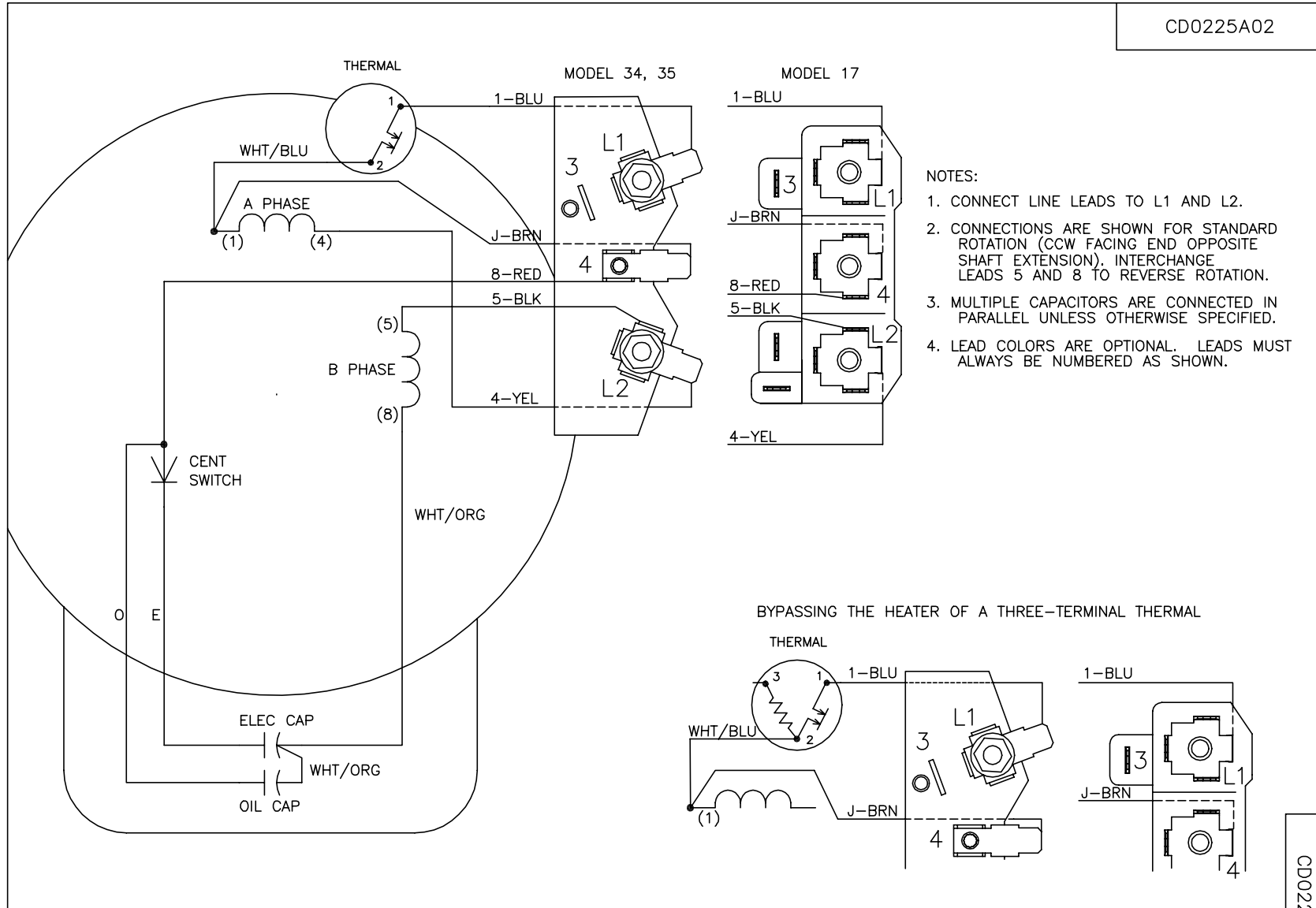
% of Rated Load	25	50	75	100	125	150
Power Factor	47	64	75	83	86	87
Efficiency	55	70	75	78	78	77
Speed	3560	3555	3520	3500	3490	3465
Line amperes	9.5	11	13	15	18	21.5

Performance Graph at 230V, 60Hz, 3.0HP Typical performance - Not guaranteed values





CD0225A02



REV. DESC: NEW		TDR: 000000371236	
REV. LTR: -	VERSION: 00	REVISD: 10:56:09 07/25/2005	
Z0V6ZZ000	FILE: \AAA\00128\491	BY: ENJOEPO	
CD0225A02	MTL: -		

BALDOR ELECTRIC Co.

TYPE LC, SV, REV, 2-TERMINAL THERMAL, TERMINAL PLATE

CD0225A02