

BALDOR® • RELIANCE 

Product Information Packet

AOM3558T

2 AIR OVERHP, 1735RPM, 3PH, 60HZ, 145T, 3524M

Part Detail							
Revision:	L	Status:	PRD/A	Change #:		Proprietary:	No
Type:	AC	Elec. Spec:	35WGP805	CD Diagram:	CD0005	Mfg Plant:	
Mech. Spec:	35K695	Layout:	35LYK695	Poles:	04	Created Date:	08-13-2010
Base:	RG	Eff. Date:	06-29-2018	Leads:	9#18 36" LG		Y

Specs			
Catalog Number:	AOM3558T	Insulation Class:	F
Enclosure:	TEAO	Inverter Code:	Not Inverter
Frame:	145T	KVA Code:	L
Frame Material:	Steel	Lifting Lugs:	No Lifting Lugs
Output @ Frequency:	2.000 HP @ 60 HZ	Locked Bearing Indicator:	Locked Bearing
Synchronous Speed @ Frequency:	1800 RPM @ 60 HZ	Motor Lead Quantity/Wire Size:	9 @ 18 AWG
Voltage @ Frequency:	208.0 V @ 60 HZ	Motor Lead Exit:	Ko Box
	230.0 V @ 60 HZ	Motor Lead Termination:	Flying Leads
	460.0 V @ 60 HZ	Motor Type:	3524M
XP Class and Group:	None	Mounting Arrangement:	F1
XP Division:	Not Applicable	Power Factor:	76
Agency Approvals:	UR	Product Family:	General Purpose
	CSA	Pulley End Bearing Type:	Ball
Auxillary Box:	No Auxillary Box	Pulley Face Code:	Standard
Auxillary Box Lead Termination:	None	Pulley Shaft Indicator:	Standard
Base Indicator:	Rigid	Rodent Screen:	None
Bearing Grease Type:	Polyrex EM (-20F +300F)	RoHS Status:	ROHS COMPLIANT
Blower:	None	Shaft Extension Location:	Pulley End

Current @ Voltage:	3.000 A @ 460.0 V	Shaft Ground Indicator:	No Shaft Grounding
	6.000 A @ 230.0 V	Shaft Rotation:	Reversible
	6.500 A @ 208.0 V	Shaft Slinger Indicator:	No Slinger
Design Code:	B	Speed Code:	Single Speed
Drip Cover:	No Drip Cover	Motor Standards:	NEMA
Duty Rating:	CONT	Starting Method:	Direct on line
Electrically Isolated Bearing:	Not Electrically Isolated	Thermal Device - Bearing:	None
Feedback Device:	NO FEEDBACK	Thermal Device - Winding:	None
Front Face Code:	Standard	Vibration Sensor Indicator:	No Vibration Sensor
Front Shaft Indicator:	None	Winding Thermal 1:	None
Heater Indicator:	No Heater	Winding Thermal 2:	None

Nameplate NP1256L										
CAT.NO.	AOM3558T									
SPEC.	35K695P805G1									
HP	2 AIR OVER									
VOLTS	208-230/460									
AMP	6.5-6/3									
RPM	1735									
FRAME	145T				HZ	60			PH	3
SER.F.	1.00		CODE	L	DES	B		CLASS	F	
NEMA-NOM-EFF	82.5		PF	76						
RATING	40C AMB-CONT									
CC									USABLE AT 208V	
DE	6205				ODE	6203				
ENCL	TEAO		SN							
	1500 FPM AT 66 CFM									

AC Induction Motor Performance Data

Record # 36567

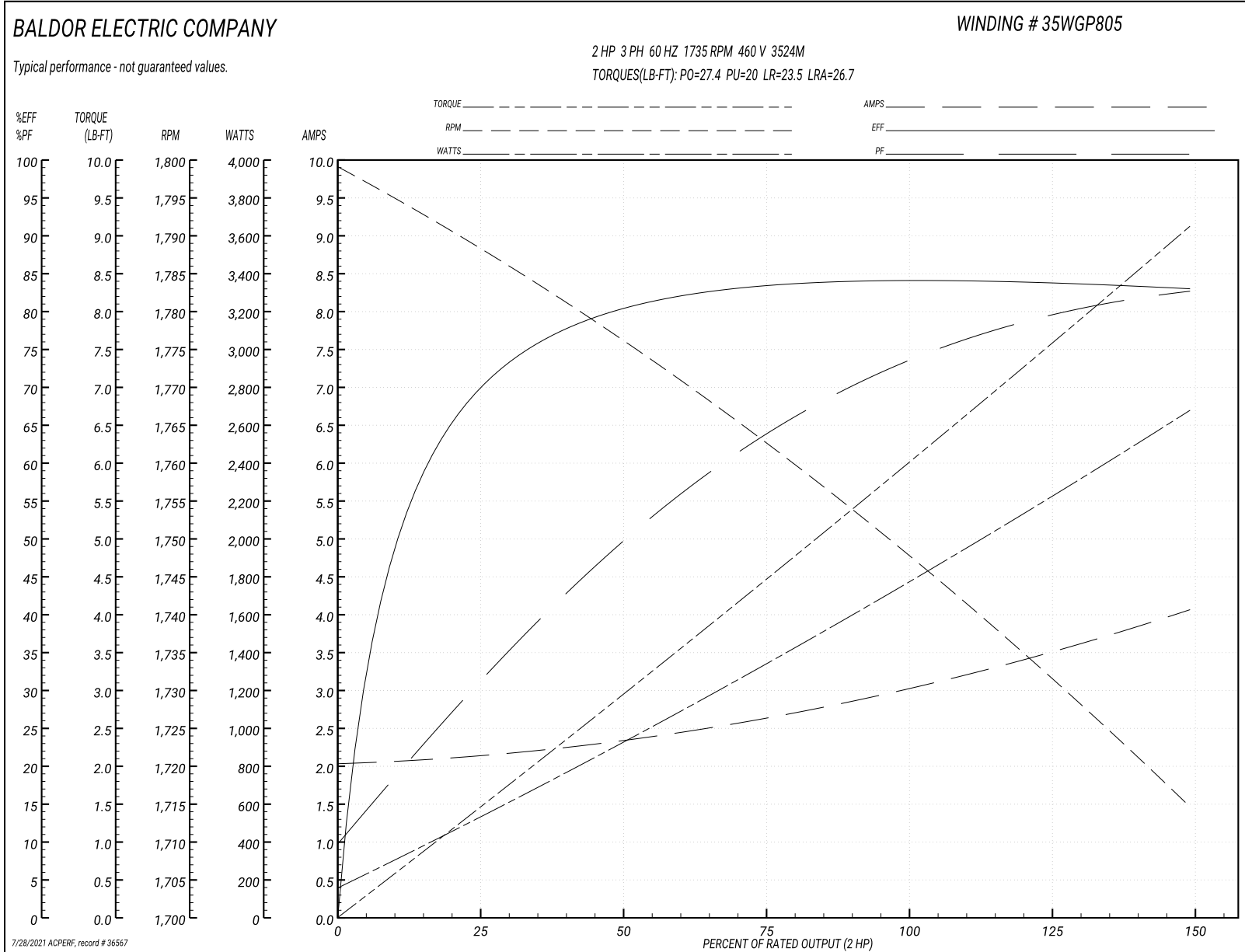
Typical performance - not guaranteed values

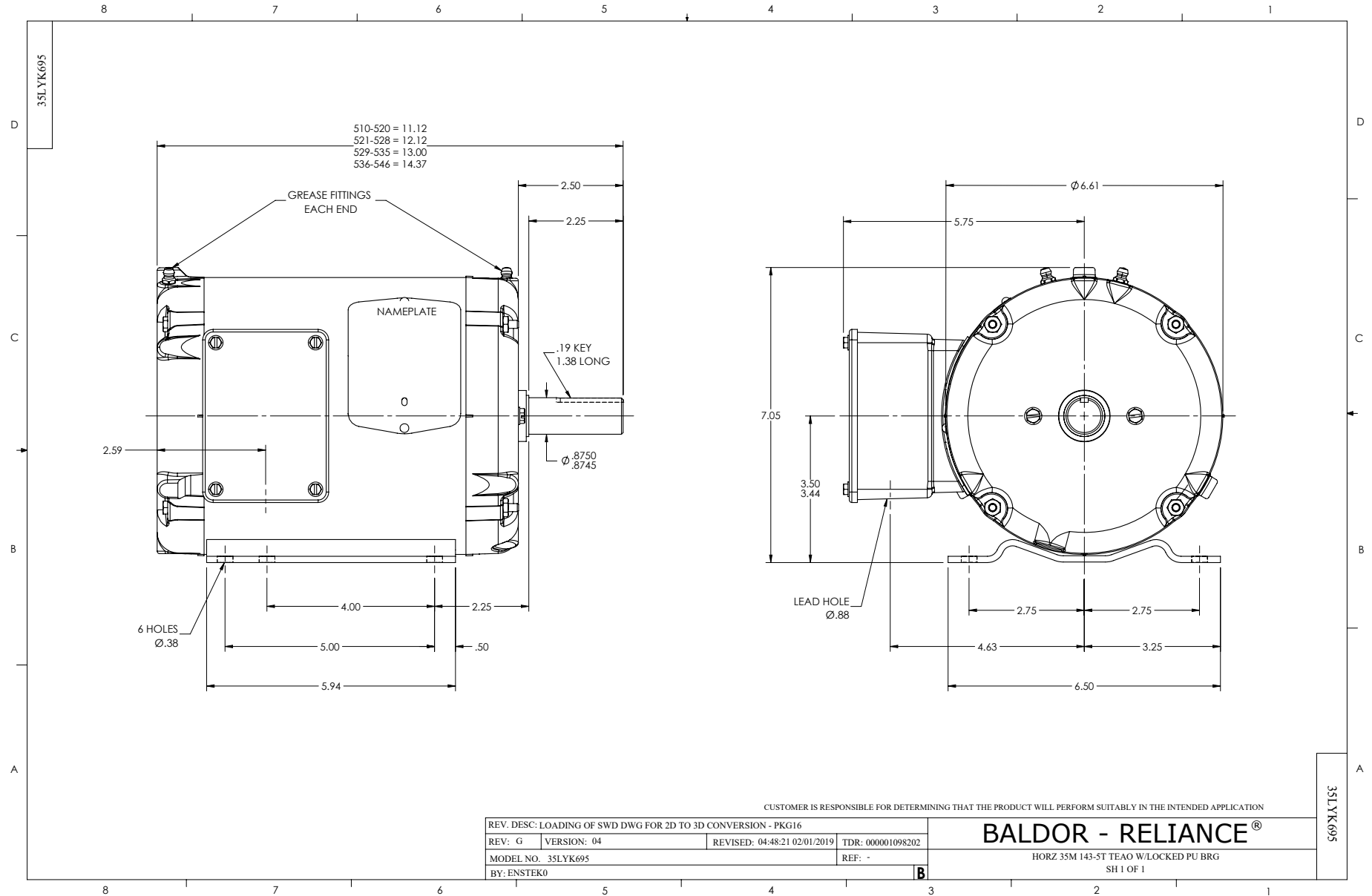
Winding: 35WGP805-R010		Type: 3524M	Enclosure: TEAO	
Nameplate Data			460 V, 60 Hz: High Voltage Connection	
Rated Output (HP)	2 AIR OVER	Full Load Torque	5.98 LB-FT	
Volts	208-230/460	Start Configuration	direct on line	
Full Load Amps	6.5-6/3	Breakdown Torque	27.4 LB-FT	
R.P.M.	1735	Pull-up Torque	20 LB-FT	
Hz	60 Phase	Locked-rotor Torque	23.5 LB-FT	
NEMA Design Code	B KVA Code	Starting Current	26.7 A	
Service Factor (S.F.)	1	No-load Current	2.05 A	
NEMA Nom. Eff.	82.5 Power Factor	Line-line Res. @ 25°C	7.95 Ω	
Rating - Duty	40C AMB-CONT	Temp. Rise @ Rated Load	68°C	
		Locked-rotor Power Factor	61.3	
		Rotor inertia	0.142 LB-FT ²	

Load Characteristics 460 V, 60 Hz, 2 HP

% of Rated Load	25	50	75	100	125	150
Power Factor	31	50	64	73	79	83
Efficiency	69	80.2	83.4	84.3	83.8	83
Speed	1789	1776	1763	1749	1731	1715
Line amperes	2.12	2.32	2.62	3.04	3.51	4.05

Performance Graph at 460V, 60Hz, 2.0HP Typical performance - Not guaranteed values

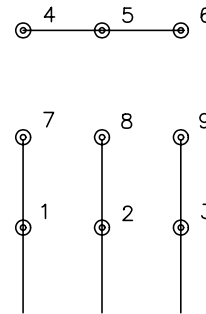




CD0005

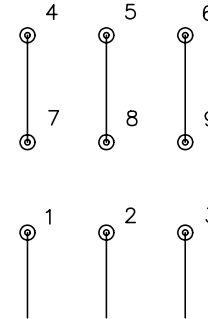


LOW VOLTAGE
(2Y)



LINE

HIGH VOLTAGE
(1Y)



LINE

NOTES:

1. INTERCHANGE ANY TWO LINE LEADS TO REVERSE ROTATION.
2. OPTIONAL THERMOSTATS ARE PROVIDED WHEN SPECIFIED.
3. ACTUAL NUMBER OF INTERNAL PARALLEL CIRCUITS MAY BE A MULTIPLE OF THOSE SHOWN ABOVE.
4. LEAD COLORS ARE OPTIONAL. LEADS MUST ALWAYS BE NUMBERED AS SHOWN.

REV. DESC: REVISE TO SHOW OPTIONAL COLORS

REV. LTR: E BY: JLP

REVISED: 01/19/99 10:15

TDR: 0171435

9000D

FILE: AAA00005140

MDL: -

MTL: -

BALDOR ELECTRIC Co.

3PH, DV, 9 LEADS

CD0005