

BALDOR® • RELIANCE 

Product Information Packet

AOM3615T

5HP,1745RPM,3PH,60HZ,184T,3634M,TEAO,F1

Part Detail							
Revision:	B	Status:	PRD/A	Change #:		Proprietary:	No
Type:	AC	Elec. Spec:	36WGS543	CD Diagram:	CD0005	Mfg Plant:	
Mech. Spec:	36G256	Layout:	36LYG256	Poles:	04	Created Date:	04-18-2012
Base:	RG	Eff. Date:	05-18-2015	Leads:	9#16 36" LG		Y

Specs			
Catalog Number:	AOM3615T	Heater Indicator:	No Heater
Enclosure:	TEAO	Insulation Class:	F
Frame:	184T	Inverter Code:	Not Inverter
Frame Material:	Steel	KVA Code:	J
Motor Letter Type:	Three Phase	Lifting Lugs:	No Lifting Lugs
Output @ Frequency:	5.000 HP @ 60 HZ	Locked Bearing Indicator:	Locked Bearing
Synchronous Speed @ Frequency:	1800 RPM @ 60 HZ	Motor Lead Quantity/Wire Size:	9 @ 16 AWG
Voltage @ Frequency:	460.0 V @ 60 HZ	Motor Lead Exit:	Ko Box
	230.0 V @ 60 HZ	Motor Lead Termination:	Flying Leads
	208.0 V @ 60 HZ	Motor Type:	3634M
XP Class and Group:	None	Mounting Arrangement:	F1
XP Division:	Not Applicable	Power Factor:	78
Agency Approvals:	CSA	Product Family:	General Purpose
	UR	Pulley End Bearing Type:	Ball
Auxillary Box:	No Auxillary Box	Pulley Face Code:	Standard
Auxillary Box Lead Termination:	None	Pulley Shaft Indicator:	Standard
Base Indicator:	Rigid	Rodent Screen:	None
Bearing Grease Type:	Polyrex EM (-20F +300F)	Shaft Extension Location:	Pulley End

Blower:	None	Shaft Ground Indicator:	No Shaft Grounding
Current @ Voltage:	6.800 A @ 460.0 V	Shaft Rotation:	Reversible
	14.200 A @ 208.0 V	Shaft Slinger Indicator:	No Slinger
	13.600 A @ 230.0 V	Speed Code:	Single Speed
Design Code:	A	Motor Standards:	NEMA
Drip Cover:	No Drip Cover	Starting Method:	Direct on line
Duty Rating:	CONT	Thermal Device - Bearing:	None
Electrically Isolated Bearing:	Not Electrically Isolated	Thermal Device - Winding:	None
Feedback Device:	NO FEEDBACK	Vibration Sensor Indicator:	No Vibration Sensor
Front Face Code:	Standard	Winding Thermal 1:	None
Front Shaft Indicator:	None	Winding Thermal 2:	None

Nameplate NP1256L										
CAT.NO.	AOM3615T									
SPEC.	36G256S543G1									
HP	5									
VOLTS	208-230/460 AIR OVER									
AMP	14.2-13.6/6.8									
RPM	1745									
FRAME	184T					HZ	60		PH	3
SER.F.	1.15					CODE	J		DES	A
NEMA-NOM-EFF	87.5					PF	78		CLASS	F
RATING	40C AMB-CONT									
CC									USABLE AT 208V	N/A
DE	6206					ODE	6205			
ENCL	TEAO					SN				
	1650 FPM AT 100CFM									

AC Induction Motor Performance Data

Record # 32154

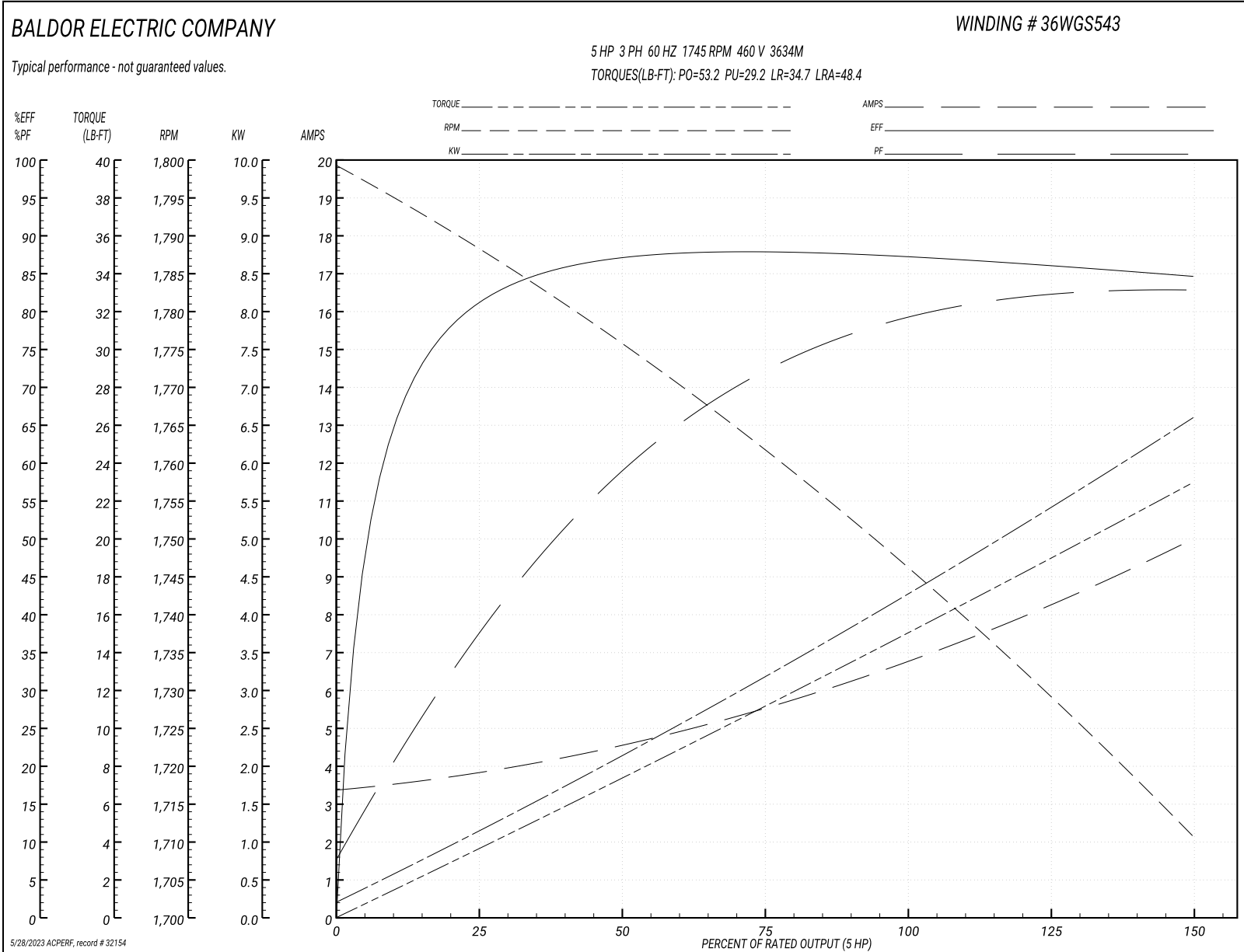
Typical performance - not guaranteed values

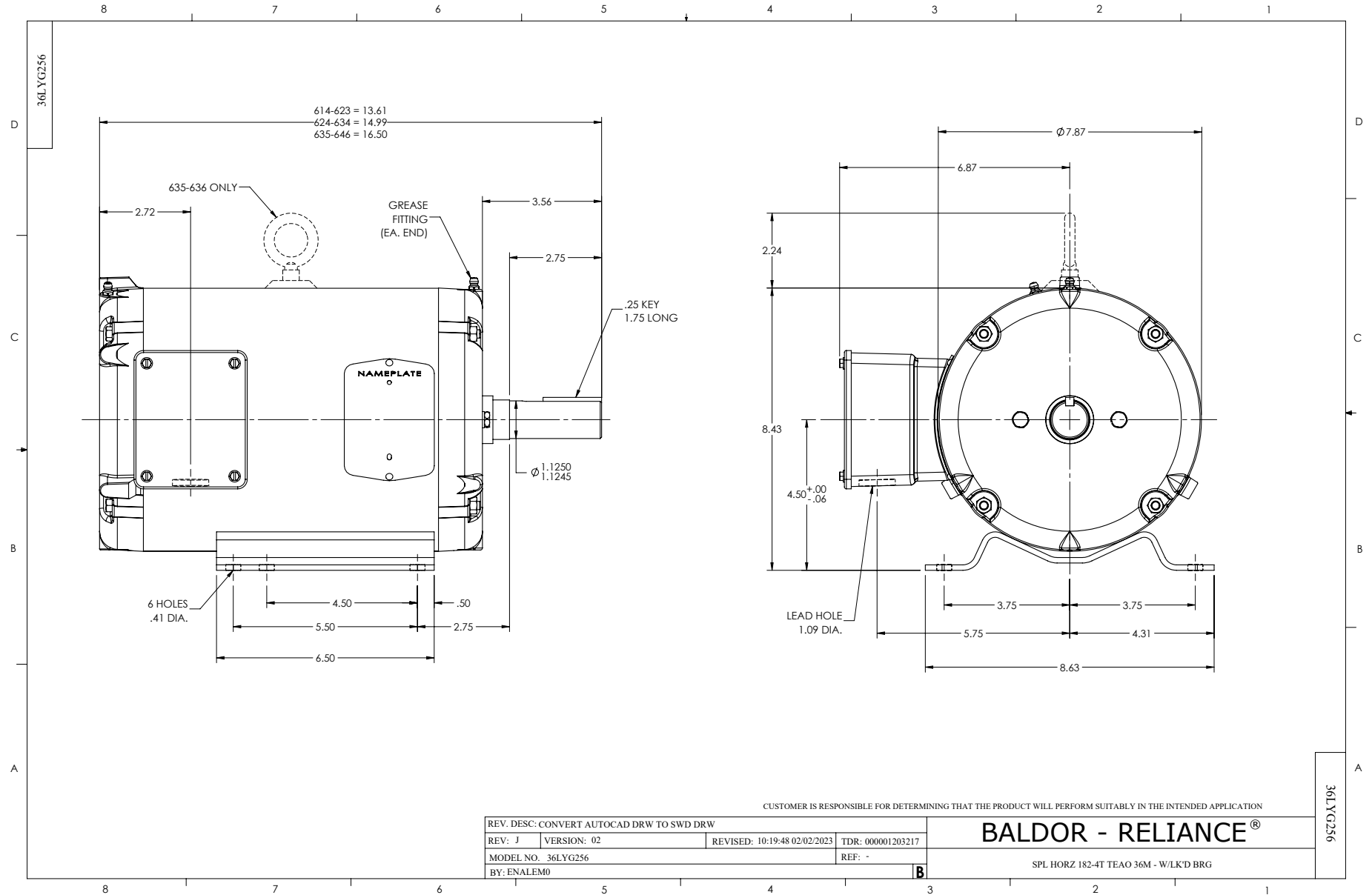
Winding: 36WGS543-R001		Type: 3634M	Enclosure: TEFC	
Nameplate Data			460 V, 60 Hz: High Voltage Connection	
Rated Output (HP)	5	Full Load Torque	15 LB-FT	
Volts	208-230/460	Start Configuration	direct on line	
Full Load Amps	14.2-13.6/6.8	Breakdown Torque	53.2 LB-FT	
R.P.M.	1745	Pull-up Torque	29.2 LB-FT	
Hz	60 Phase	Locked-rotor Torque	34.7 LB-FT	
NEMA Design Code	A KVA Code	Starting Current	48.4 A	
Service Factor (S.F.)	1.15	No-load Current	3.42 A	
NEMA Nom. Eff.	87.5 Power Factor	Line-line Res. @ 25°C	2.6196 Ω	
Rating - Duty	40C AMB-CONT	Temp. Rise @ Rated Load	78°C	
S.F. Amps		Temp. Rise @ S.F. Load	96°C	
		Locked-rotor Power Factor	42	
		Rotor inertia	0.317 LB-FT ²	

Load Characteristics 460 V, 60 Hz, 5 HP

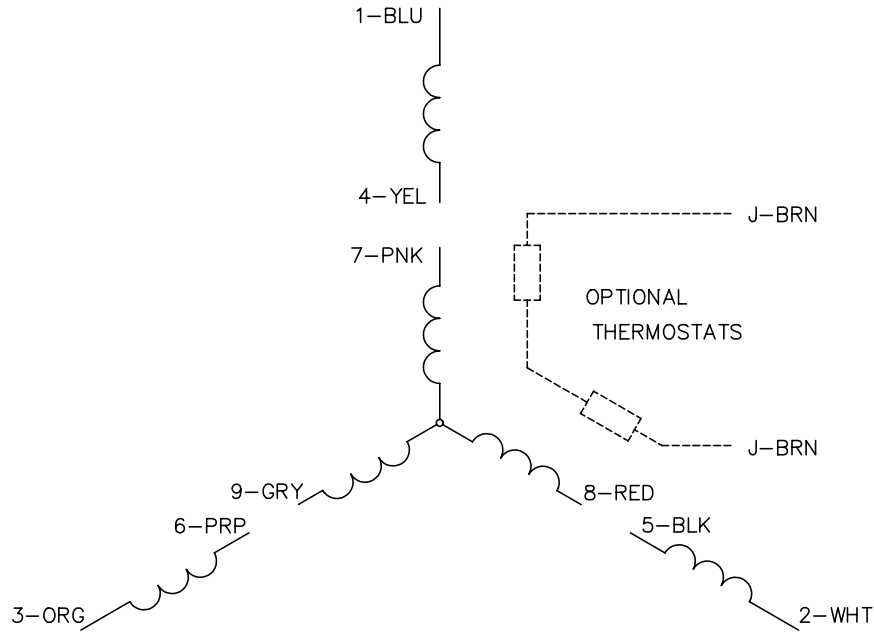
% of Rated Load	25	50	75	100	125	150	S.F.
Power Factor	38	59	72	78	82	83	80
Efficiency	80.9	87.1	88.3	87.8	86.6	84.7	87.1
Speed	1788.2	1775.7	1761.9	1747.1	1729.5	1710.5	1737
Line amperes	3.77	4.5	5.5	6.83	8.24	9.97	7.68

Performance Graph at 460V, 60Hz, 5.0HP Typical performance - Not guaranteed values

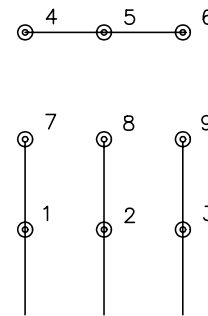




CD0005

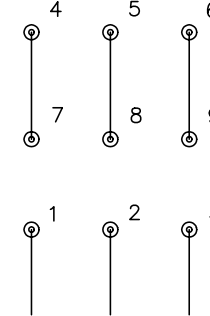


LOW VOLTAGE
(2Y)



LINE

HIGH VOLTAGE
(1Y)



LINE

NOTES:

1. INTERCHANGE ANY TWO LINE LEADS TO REVERSE ROTATION.
2. OPTIONAL THERMOSTATS ARE PROVIDED WHEN SPECIFIED.
3. ACTUAL NUMBER OF INTERNAL PARALLEL CIRCUITS MAY BE A MULTIPLE OF THOSE SHOWN ABOVE.
4. LEAD COLORS ARE OPTIONAL. LEADS MUST ALWAYS BE NUMBERED AS SHOWN.

REV. DESC: REVISE TO SHOW OPTIONAL COLORS			
REV. LTR: E	BY: JLP	REVISED: 01/19/99 10:15	TDR: 0171435
900000		FILE: AAA00005140	MDL: -
		MTL: -	

BALDOR ELECTRIC Co.

3PH, DV, 9 LEADS

CD0005