

**BALDOR® • RELIANCE** 

**Product Information Packet**

**AOM3617T**

**1HP,860RPM,3PH,60HZ,182T,3622M,TEAO,F1,N**

Part Detail							
Revision:	F	Status:	PRD/A	Change #:		Proprietary:	No
Type:	AC	Elec. Spec:	36WGT755	CD Diagram:	CD0005	Mfg Plant:	
Mech. Spec:	36G256	Layout:	36LYG256	Poles:	08	Created Date:	04-02-2013
Base:	RG	Eff. Date:	02-08-2017	Leads:	9#16 36" LONG		Y

Specs			
Catalog Number:	AOM3617T	Insulation Class:	F
Enclosure:	TEAO	Inverter Code:	Not Inverter
Frame:	182T	KVA Code:	J
Frame Material:	Steel	Lifting Lugs:	No Lifting Lugs
Output @ Frequency:	1.000 HP @ 60 HZ	Locked Bearing Indicator:	Locked Bearing
Synchronous Speed @ Frequency:	900 RPM @ 60 HZ	Motor Lead Quantity/Wire Size:	9 @ 16 AWG
Voltage @ Frequency:	208.0 V @ 60 HZ	Motor Lead Exit:	Ko Box
	230.0 V @ 60 HZ	Motor Lead Termination:	Flying Leads
	460.0 V @ 60 HZ	Motor Type:	3622M
XP Class and Group:	None	Mounting Arrangement:	F1
XP Division:	Not Applicable	Power Factor:	56
Agency Approvals:	UR	Product Family:	General Purpose
	CSA	Pulley End Bearing Type:	Ball
Auxillary Box:	No Auxillary Box	Pulley Face Code:	Standard
Auxillary Box Lead Termination:	None	Pulley Shaft Indicator:	Standard
Base Indicator:	Rigid	Rodent Screen:	None
Bearing Grease Type:	Polyrex EM (-20F +300F)	RoHS Status:	ROHS COMPLIANT
Blower:	None	Shaft Extension Location:	Pulley End

<b>Current @ Voltage:</b>	2.200 A @ 460.0 V	<b>Shaft Ground Indicator:</b>	No Shaft Grounding
	4.200 A @ 208.0 V	<b>Shaft Rotation:</b>	Reversible
	4.400 A @ 230.0 V	<b>Shaft Slinger Indicator:</b>	No Slinger
<b>Design Code:</b>	B	<b>Speed Code:</b>	Single Speed
<b>Drip Cover:</b>	No Drip Cover	<b>Motor Standards:</b>	NEMA
<b>Duty Rating:</b>	CONT	<b>Starting Method:</b>	Direct on line
<b>Electrically Isolated Bearing:</b>	Not Electrically Isolated	<b>Thermal Device - Bearing:</b>	None
<b>Feedback Device:</b>	NO FEEDBACK	<b>Thermal Device - Winding:</b>	None
<b>Front Face Code:</b>	Standard	<b>Vibration Sensor Indicator:</b>	No Vibration Sensor
<b>Front Shaft Indicator:</b>	None	<b>Winding Thermal 1:</b>	None
<b>Heater Indicator:</b>	No Heater	<b>Winding Thermal 2:</b>	None

Nameplate NP1256L										
CAT.NO.	AOM3617T									
SPEC.	36G256T755H1									
HP	1 AIR OVER									
VOLTS	208-230/460									
AMP	4.2-4.4/2.2									
RPM	860									
FRAME	182T				HZ	60			PH	3
SER.F.	1.00		CODE	J	DES	B		CLASS	F	
NEMA-NOM-EFF	74		PF	56						
RATING	40C AMB-CONT									
CC									USABLE AT 208V	
DE	6206				ODE	6205				
ENCL	TEAO		SN							
	825 FPM AT 100 CFM									

**AC Induction Motor Performance Data**

Record # 61453

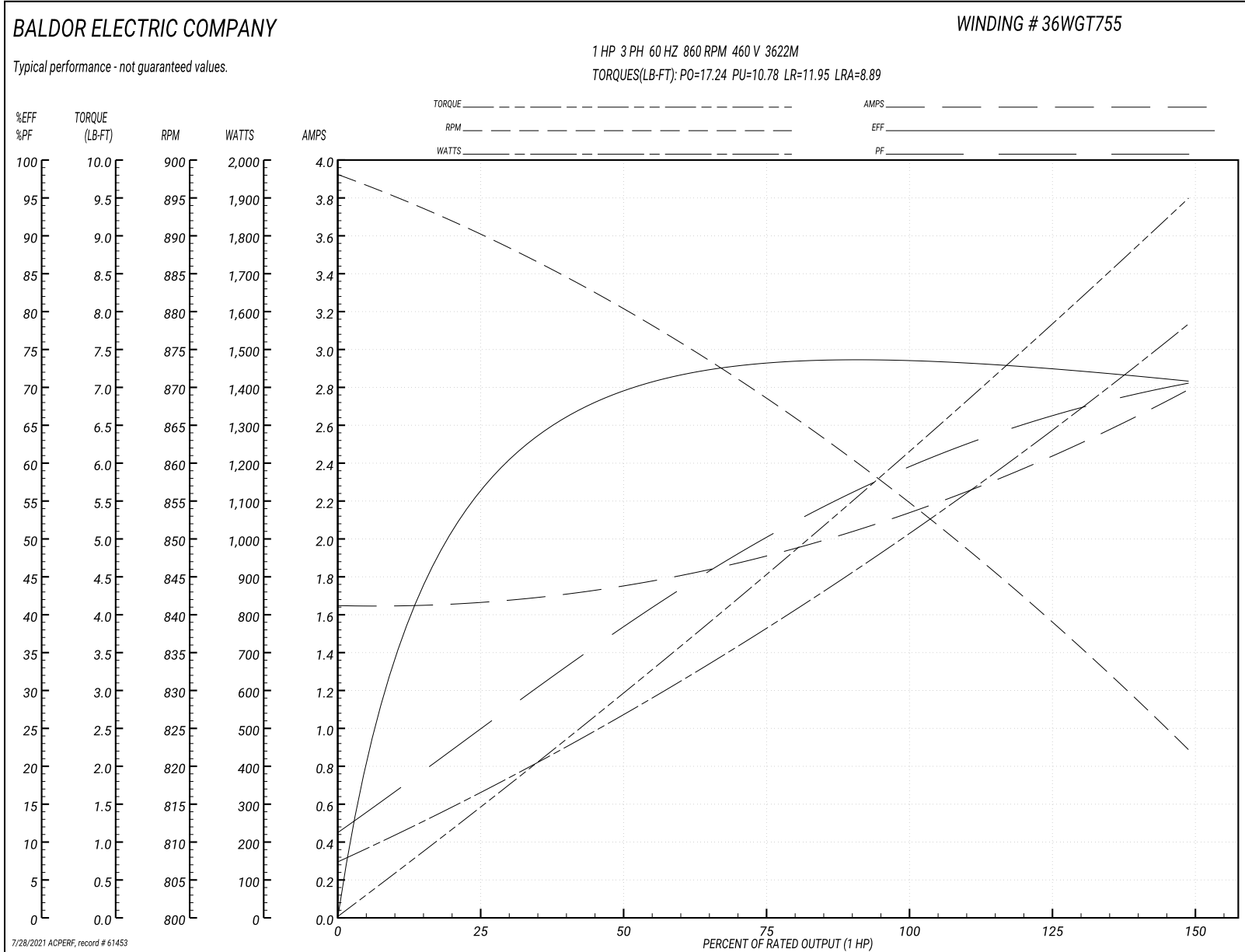
Typical performance - not guaranteed values

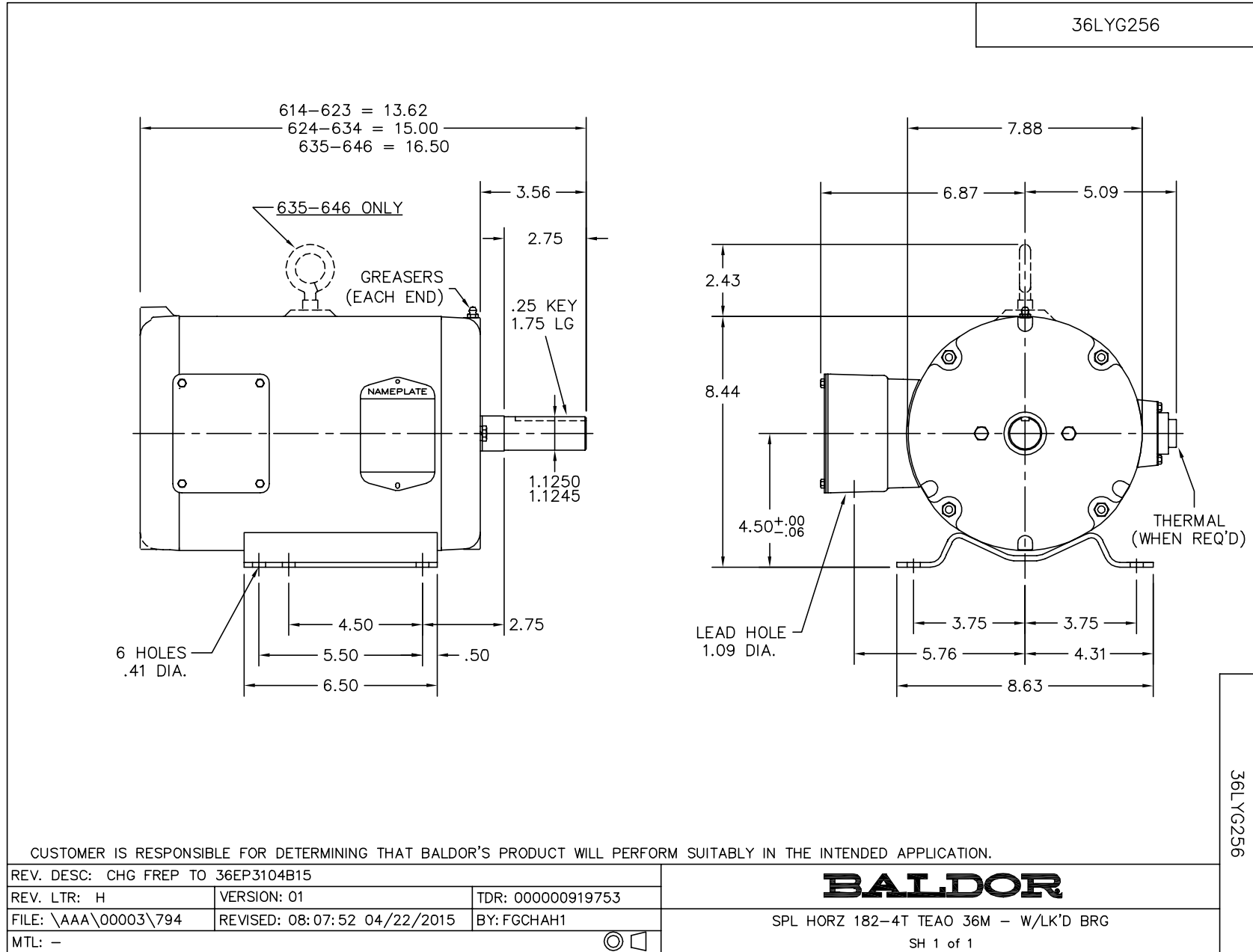
<b>Winding: 36WGT755-R010</b>		<b>Type: 3622M</b>		<b>Enclosure: TEAO</b>		
<b>Nameplate Data</b>			<b>460 V, 60 Hz: High Voltage Connection</b>			
<b>Rated Output (HP)</b>	1 AIR OVER		<b>Full Load Torque</b>	6.12 LB-FT		
<b>Volts</b>	208-230/460		<b>Start Configuration</b>	direct on line		
<b>Full Load Amps</b>	4.2-4.4/2.2		<b>Breakdown Torque</b>	17.24 LB-FT		
<b>R.P.M.</b>	860		<b>Pull-up Torque</b>	10.78 LB-FT		
<b>Hz</b>	60	<b>Phase</b>	3	<b>Locked-rotor Torque</b>	11.95 LB-FT	
<b>NEMA Design Code</b>	B		<b>KVA Code</b>	J	<b>Starting Current</b>	8.89 A
<b>Service Factor (S.F.)</b>	1		<b>No-load Current</b>	1.65 A		
<b>NEMA Nom. Eff.</b>	74	<b>Power Factor</b>	56	<b>Line-line Res. @ 25°C</b>	18.8 Ω	
<b>Rating - Duty</b>	40C AMB-CONT		<b>Temp. Rise @ Rated Load</b>	62°C		
			<b>Locked-rotor Power Factor</b>	50.8		
			<b>Rotor inertia</b>	0.206 LB-FT <sup>2</sup>		

**Load Characteristics 460 V, 60 Hz, 1 HP**

<b>% of Rated Load</b>	<b>25</b>	<b>50</b>	<b>75</b>	<b>100</b>	<b>125</b>	<b>150</b>
<b>Power Factor</b>	25	38	50	59	66	71
<b>Efficiency</b>	55.4	68.7	72.9	73.9	73	70.5
<b>Speed</b>	890	879	868	857	840	821
<b>Line amperes</b>	1.66	1.75	1.91	2.14	2.43	2.79

Performance Graph at 460V, 60Hz, 1.0HP Typical performance - Not guaranteed values

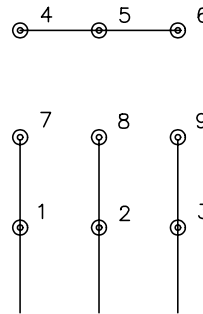




CD0005

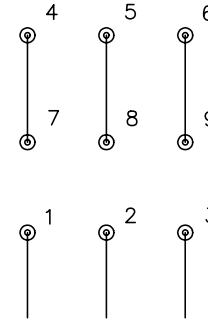


LOW VOLTAGE  
(2Y)



LINE

HIGH VOLTAGE  
(1Y)



LINE

NOTES:

1. INTERCHANGE ANY TWO LINE LEADS TO REVERSE ROTATION.
2. OPTIONAL THERMOSTATS ARE PROVIDED WHEN SPECIFIED.
3. ACTUAL NUMBER OF INTERNAL PARALLEL CIRCUITS MAY BE A MULTIPLE OF THOSE SHOWN ABOVE.
4. LEAD COLORS ARE OPTIONAL. LEADS MUST ALWAYS BE NUMBERED AS SHOWN.

REV. DESC: REVISE TO SHOW OPTIONAL COLORS

REV. LTR: E BY: JLP

REVISED: 01/19/99 10:15

TDR: 0171435

90000

FILE: AAA00005140

MDL: -

MTL: -

**BALDOR ELECTRIC Co.**

3PH, DV, 9 LEADS

CD0005