

BALDOR® • RELIANCE 

Product Information Packet

CDM3538

.5HP, 1725RPM, 3PH, 60HZ, 56C, 3420M, TEFC, F1

Part Detail							
Revision:	L	Status:	PRD/A	Change #:		Proprietary:	No
Type:	AC	Elec. Spec:	34WG0097	CD Diagram:	CD0005	Mfg Plant:	
Mech. Spec:	34M811	Layout:	34LYM811	Poles:	04	Created Date:	04-20-2016
Base:	RG	Eff. Date:	10-27-2022	Leads:	9#18		

Specs			
Catalog Number:	CDM3538	Heater Indicator:	No Heater
Enclosure:	TEFC	Insulation Class:	F
Frame:	56C	Inverter Code:	Not Inverter
Frame Material:	Steel	KVA Code:	M
Motor Letter Type:	Three Phase	Lifting Lugs:	No Lifting Lugs
Output @ Frequency:	.500 HP @ 60 HZ	Locked Bearing Indicator:	Locked Bearing
Synchronous Speed @ Frequency:	1800 RPM @ 60 HZ	Motor Lead Quantity/Wire Size:	9 @ 18 AWG
Voltage @ Frequency:	230.0 V @ 60 HZ	Motor Lead Exit:	Ko Box
	460.0 V @ 60 HZ	Motor Lead Termination:	Flying Leads
XP Class and Group:	None	Motor Type:	3420M
XP Division:	Not Applicable	Mounting Arrangement:	F1
Agency Approvals:	CCSA US	Power Factor:	69
	UR	Product Family:	Dirty Duty Plus
Auxillary Box:	No Auxillary Box	Pulley End Bearing Type:	Sealed Bearing
Auxillary Box Lead Termination:	None	Pulley Face Code:	C-Face
Base Indicator:	Rigid	Pulley Shaft Indicator:	Standard
Bearing Grease Type:	Polyrex EM (-20F +300F)	Rodent Screen:	None
Blower:	None	RoHS Status:	ROHS COMPLIANT

Constant Torque Speed Range:	6	Shaft Extension Location:	Pulley End
Current @ Voltage:	1.800 A @ 230.0 V	Shaft Ground Indicator:	No Shaft Grounding
	1.600 A @ 208.0 V	Shaft Rotation:	Reversible
	.900 A @ 460.0 V	Shaft Slinger Indicator:	No Slinger
Design Code:	B	Speed Code:	Single Speed
Drip Cover:	No Drip Cover	Motor Standards:	NEMA
Duty Rating:	CONT	Starting Method:	Direct on line
Electrically Isolated Bearing:	Not Electrically Isolated	Thermal Device - Bearing:	None
Feedback Device:	NO FEEDBACK	Thermal Device - Winding:	None
Front Face Code:	Standard	Vibration Sensor Indicator:	No Vibration Sensor
Front Shaft Indicator:	None	Winding Thermal 1:	None
		Winding Thermal 2:	None

Nameplate NP3659										
CAT.NO.	CDM3538									
SPEC.	34M811-0097G1							ENCL	TEFC	
FRAME	56C				H.P.	.5				
VOLTS	230/460									
AMPS	1.8/.9						IP	56		
R.P.M.	1725									
HZ.	60			PH.	3		CLASS	F		
SER.F.	1.25			DES.	B		CC			
NEMA NOM. EFF.	75.5									
RATING	40C AMB-CONT									
DE	6203			ODE	6203					
GREASE	POLYREX EM									
SN										
	50C AT 1.0 SF									
	SFA 2/1									

AC Induction Motor Performance Data

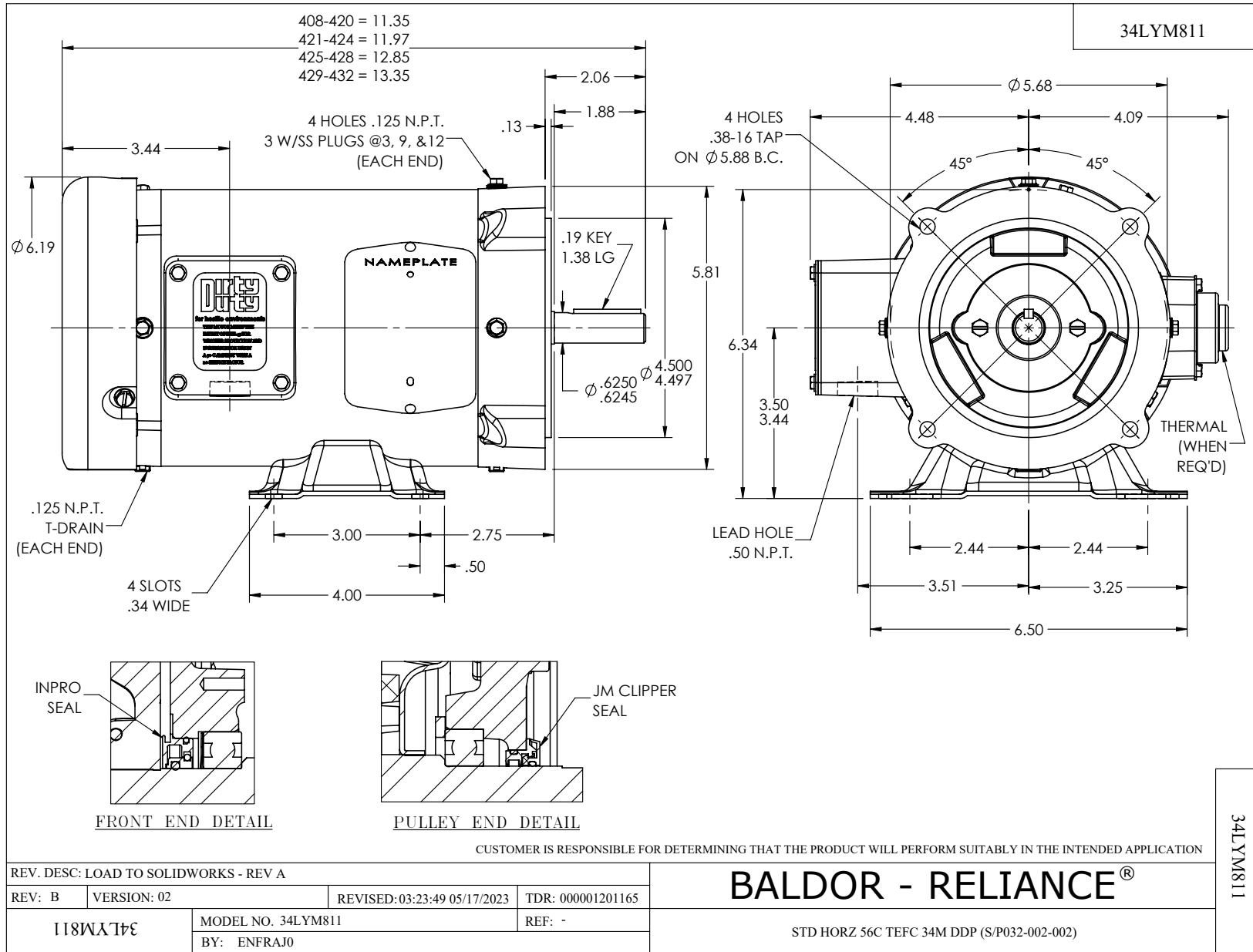
Record # 55809

Typical performance - not guaranteed values

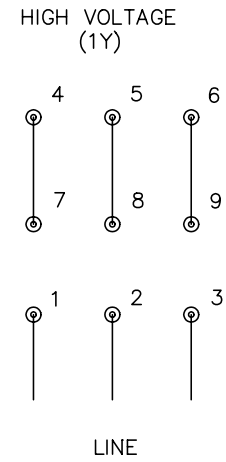
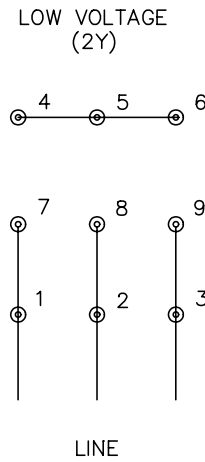
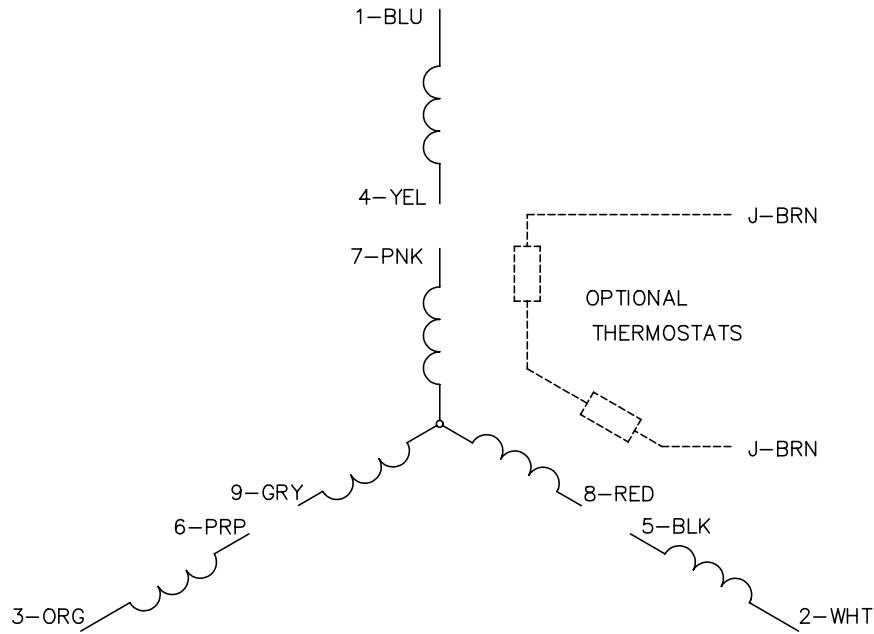
Winding: 34WG0097-R039			Type: 3420M			Enclosure: TEFC		
Nameplate Data				460 V, 60 Hz: High Voltage Connection				
Rated Output (HP)	.5		Full Load Torque	1.5 LB-FT				
Volts	230/460		Start Configuration	direct on line				
Full Load Amps	1.8/.9		Breakdown Torque	6.8 LB-FT				
R.P.M.	1725		Pull-up Torque	4.6 LB-FT				
Hz	60 Phase	3	Locked-rotor Torque	5.8 LB-FT				
NEMA Design Code	B	KVA Code	M	Starting Current	7 A			
Service Factor (S.F.)	1.25		No-load Current	0.54 A				
NEMA Nom. Eff.	75.5	Power Factor	69	Line-line Res. @ 25°C	27.5 Ω			
Rating - Duty	40C AMB-CONT		Temp. Rise @ Rated Load	45°C				
S.F. Amps	2/1		Temp. Rise @ S.F. Load	54°C				
			Locked-rotor Power Factor	56.3				
			Rotor inertia	0.0476 LB-FT ²				

Load Characteristics 460 V, 60 Hz, 0.5 HP

% of Rated Load	25	50	75	100	125	150	S.F.
Power Factor	36	53	64	71	77	84	77
Efficiency	55	69	74.4	78	75.7	74.4	75.7
Speed	1787	1774	1760	1749	1728	1717	1728
Line amperes	0.6	0.65	0.74	0.84	1	1.1	1



CD0005



NOTES:

1. INTERCHANGE ANY TWO LINE LEADS TO REVERSE ROTATION.
2. OPTIONAL THERMOSTATS ARE PROVIDED WHEN SPECIFIED.
3. ACTUAL NUMBER OF INTERNAL PARALLEL CIRCUITS MAY BE A MULTIPLE OF THOSE SHOWN ABOVE.
4. LEAD COLORS ARE OPTIONAL. LEADS MUST ALWAYS BE NUMBERED AS SHOWN.

REV. DESC: REVISE TO SHOW OPTIONAL COLORS			
REV. LTR: E	BY: JLP	REVISED: 01/19/99 10:15	TDR: 0171435
900000		FILE: AAA00005140	MDL: -
		MTL: -	

BALDOR ELECTRIC Co.

3PH, DV, 9 LEADS

CD0005