

BALDOR® • RELIANCE 

Product Information Packet

CDM3543

.75HP, 1180RPM, 3PH, 60HZ, 56C, 3524M, TEFC, F1

Part Detail							
Revision:	A	Status:	PRD/A	Change #:		Proprietary:	No
Type:	AC	Elec. Spec:	35WGG031	CD Diagram:	CD0005	Mfg Plant:	
Mech. Spec:	35E4315	Layout:	35LYE4315	Poles:	06	Created Date:	09-09-2022
Base:	RG	Eff. Date:	11-08-2023	Leads:	9#18		

Specs			
Catalog Number:	CDM3543	Heater Indicator:	No Heater
Enclosure:	TEFC	Insulation Class:	F
Frame:	56C	Inverter Code:	Not Inverter
Frame Material:	Steel	KVA Code:	K
Motor Letter Type:	Three Phase	Lifting Lugs:	No Lifting Lugs
Output @ Frequency:	.750 HP @ 60 HZ	Locked Bearing Indicator:	Locked Bearing
Synchronous Speed @ Frequency:	1200 RPM @ 60 HZ	Motor Lead Quantity/Wire Size:	9 @ 18 AWG
Voltage @ Frequency:	460.0 V @ 60 HZ	Motor Lead Exit:	Ko Box
	230.0 V @ 60 HZ	Motor Lead Termination:	Flying Leads
XP Class and Group:	None	Motor Type:	3518M
XP Division:	Not Applicable	Mounting Arrangement:	F1
Agency Approvals:	CCSA US	Power Factor:	63
	UR	Product Family:	Dirty Duty Plus
Auxillary Box:	No Auxillary Box	Pulley End Bearing Type:	Sealed Bearing
Auxillary Box Lead Termination:	None	Pulley Face Code:	C-Face
Base Indicator:	Rigid	Pulley Shaft Indicator:	Standard
Bearing Grease Type:	Polyrex EM (-20F +300F)	Rodent Screen:	None
Blower:	None	Shaft Extension Location:	Pulley End

Constant Torque Speed Range:	6	Shaft Ground Indicator:	No Shaft Grounding
Current @ Voltage:	1.400 A @ 460.0 V	Shaft Rotation:	Reversible
	2.800 A @ 230.0 V	Shaft Slinger Indicator:	No Slinger
Design Code:	B	Speed Code:	Single Speed
Drip Cover:	No Drip Cover	Motor Standards:	NEMA
Duty Rating:	CONT	Starting Method:	Direct on line
Electrically Isolated Bearing:	Not Electrically Isolated	Thermal Device - Bearing:	None
Feedback Device:	NO FEEDBACK	Thermal Device - Winding:	None
Front Face Code:	Standard	Vibration Sensor Indicator:	No Vibration Sensor
Front Shaft Indicator:	None	Winding Thermal 1:	None
		Winding Thermal 2:	None

Nameplate NP3505											
CAT NO	CDM3543										
SPEC.	35E4315G031G1						ENCL	TEFC			
FRAME	56C			HP	.75						
VOLTS	230/460										
FLA	3.1/1.55				I.P.	56					
RPM	1180			RPM MAX	1800						
HZ	60			PH	3		CLASS	F			
SER.F.	1.15			DES	B		CC				
NEMA-NOM-EFF	81.7										
RATING	40C AMB-CONT										
DE BRG	6205			ODE BRG	6203						
GREASE	POLYREX EM										
INV.TYPE				C HP FR	60		C HP TO	90			
CT HZ FROM	6			CT HZ TO	60		VT HZ FROM	6		VT HZ TO	60
SER.NO	SFA 2.9/1.45										

AC Induction Motor Performance Data

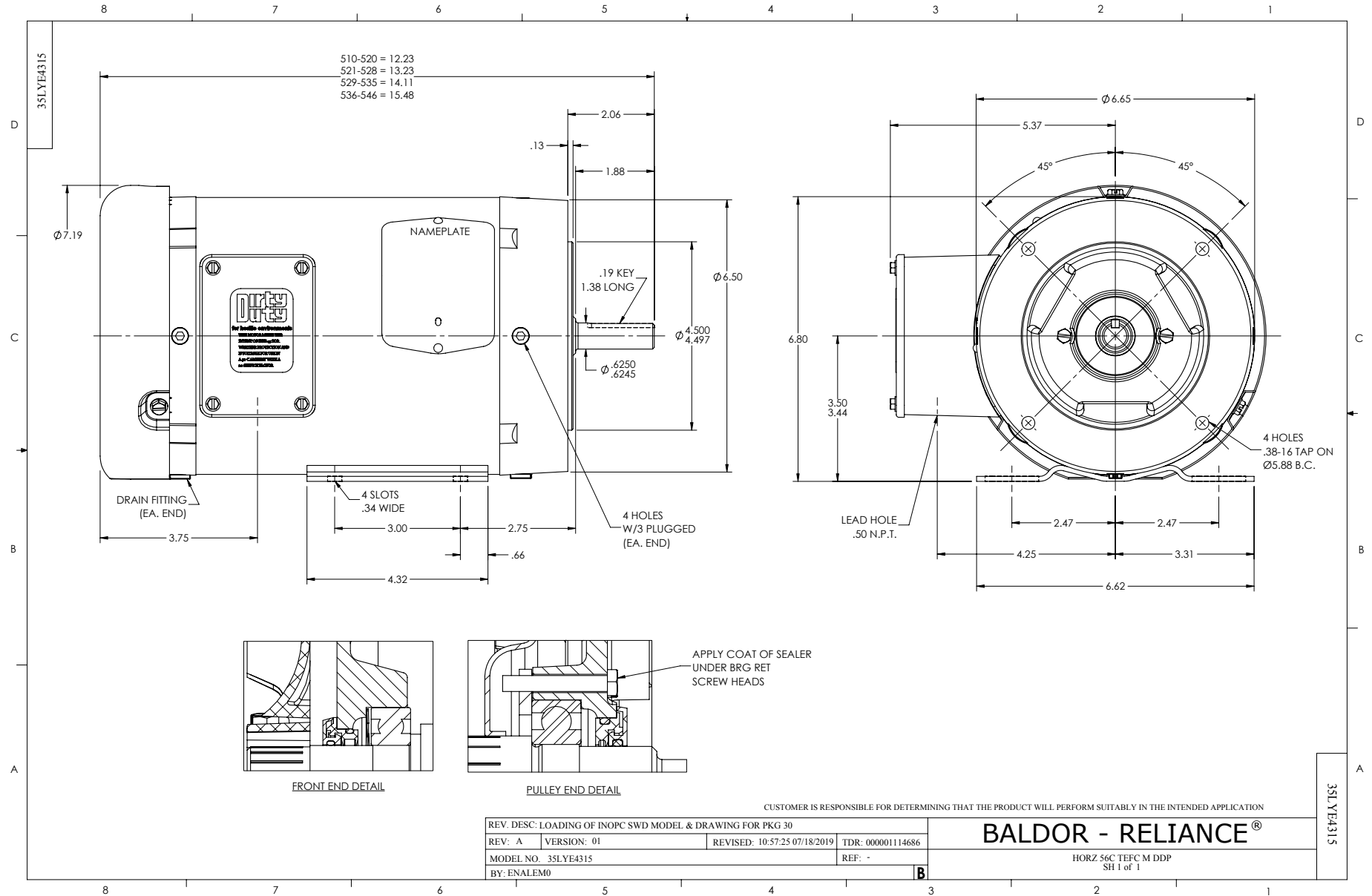
Record # 82358

Typical performance - not guaranteed values

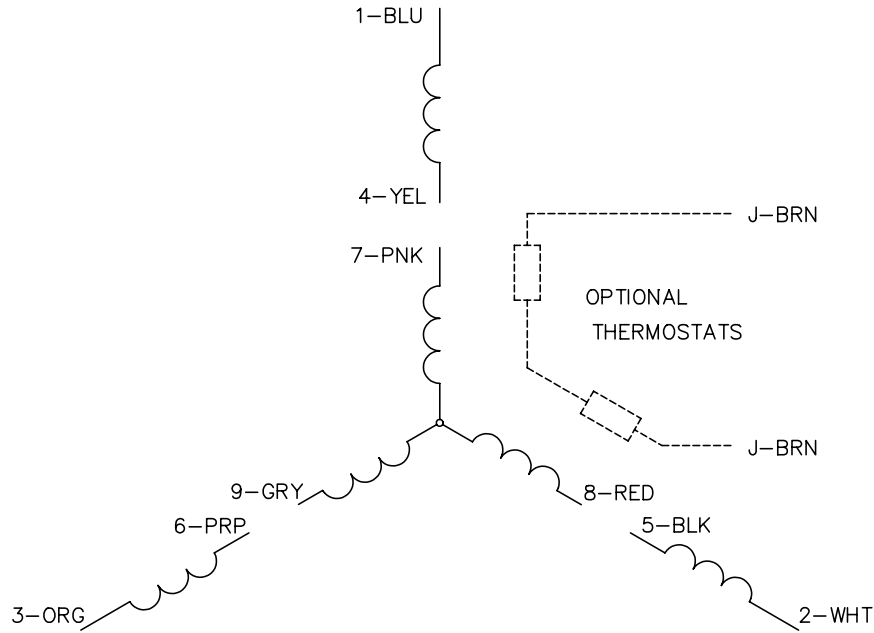
Winding: 35WGG031-R004		Type: 3524M		Enclosure: TEFC	
Nameplate Data			460 V, 60 Hz: High Voltage Connection		
Rated Output (HP)	.75	Full Load Torque	3.35 LB-FT		
Volts	230/460	Start Configuration	direct on line		
Full Load Amps	3.1/1.55	Breakdown Torque	12.9 LB-FT		
R.P.M.	1180	Pull-up Torque	7.2 LB-FT		
Hz	60 Phase	Locked-rotor Torque	7.7 LB-FT		
NEMA Design Code	B KVA Code	Starting Current	9.7 A		
Service Factor (S.F.)	1.15	No-load Current	1.22 A		
NEMA Nom. Eff.	81.7 Power Factor	Line-line Res. @ 25°C	20.1 Ω		
Rating - Duty	40C AMB-CONT	Temp. Rise @ Rated Load	42°C		
S.F. Amps	3.3/1.65	Temp. Rise @ S.F. Load	47°C		
		Locked-rotor Power Factor	50.5		
		Rotor inertia	0.174 lb-ft ²		

Load Characteristics 460 V, 60 Hz, 0.75 HP

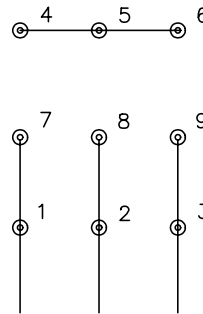
% of Rated Load	25	50	75	100	125	150	S.F.
Power Factor	22	35	47	55	62	67	1
Efficiency	65	76	80	82	82	81	82.4
Speed	1194	1189	1184	1179	1172	1166	1170
Line amperes	1.23	1.31	1.42	1.56	1.74	1.95	1.47



CD0005

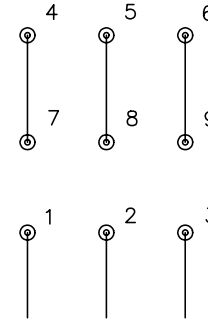


LOW VOLTAGE
(2Y)



LINE

HIGH VOLTAGE
(1Y)



LINE

NOTES:

1. INTERCHANGE ANY TWO LINE LEADS TO REVERSE ROTATION.
2. OPTIONAL THERMOSTATS ARE PROVIDED WHEN SPECIFIED.
3. ACTUAL NUMBER OF INTERNAL PARALLEL CIRCUITS MAY BE A MULTIPLE OF THOSE SHOWN ABOVE.
4. LEAD COLORS ARE OPTIONAL. LEADS MUST ALWAYS BE NUMBERED AS SHOWN.

REV. DESC: REVISE TO SHOW OPTIONAL COLORS			
REV. LTR: E	BY: JLP	REVISED: 01/19/99 10:15	TDR: 0171435
900000		FILE: AAA00005140	MDL: -
		MTL: -	

BALDOR ELECTRIC Co.

3PH, DV, 9 LEADS

CD0005