

**BALDOR® • RELIANCE** 

**Product Information Packet**

**CEFWWDM3546T**

**1HP,1760RPM,3PH,60HZ,143TC,3519M,TEFC,F1**

Part Detail							
Revision:	S	Status:	NLA/A	Change #:		Proprietary:	No
Type:	AC	Elec. Spec:	35WGM492	CD Diagram:	CD0005	Mfg Plant:	
Mech. Spec:	35E1678	Layout:	35LYE1678	Poles:	04	Created Date:	12-14-2012
Base:	RG	Eff. Date:	01-18-2023	Leads:	9#18		

Specs			
Catalog Number:	CEFWWDWM3546T	Front Shaft Indicator:	None
Enclosure:	TEFC	Heater Indicator:	No Heater
Frame:	143TC	Insulation Class:	F
Frame Material:	Steel	Inverter Code:	Inverter Ready
Motor Letter Type:	Three Phase	KVA Code:	L
Output @ Frequency:	1.000 HP @ 60 HZ	Lifting Lugs:	No Lifting Lugs
Synchronous Speed @ Frequency:	1800 RPM @ 60 HZ	Locked Bearing Indicator:	Locked Bearing
Voltage @ Frequency:	460.0 V @ 60 HZ	Motor Lead Quantity/Wire Size:	9 @ 18 AWG
	230.0 V @ 60 HZ	Motor Lead Exit:	Ko Box
	208.0 V @ 60 HZ	Motor Lead Termination:	Flying Leads
Haz Area Class and Group:	None	Motor Type:	3520M
Haz Area Division:	Not Applicable	Mounting Arrangement:	F1
Agency Approvals:	CSA	Power Factor:	71
	CSA EEV	Product Family:	Super White Washdown
	UR	Pulley End Bearing Type:	Sealed Bearing
Auxillary Box:	No Auxillary Box	Pulley Face Code:	C-Face
Auxillary Box Lead Termination:	None	Pulley Shaft Indicator:	Standard
Base Indicator:	Rigid	Rodent Screen:	None

<b>Bearing Grease Type:</b>	Polyrex EM (-20F +300F)	<b>Shaft Extension Location:</b>	Pulley End
<b>Blower:</b>	None	<b>Shaft Ground Indicator:</b>	No Shaft Grounding
<b>Current @ Voltage:</b>	3.000 A @ 230.0 V	<b>Shaft Rotation:</b>	Reversible
	3.100 A @ 208.0 V	<b>Shaft Slinger Indicator:</b>	Shaft Slinger
	1.500 A @ 460.0 V	<b>Speed Code:</b>	Single Speed
<b>Design Code:</b>	B	<b>Motor Standards:</b>	NEMA
<b>Drip Cover:</b>	No Drip Cover	<b>Starting Method:</b>	Direct on line
<b>Duty Rating:</b>	CONT	<b>Thermal Device - Bearing:</b>	None
<b>Electrically Isolated Bearing:</b>	Not Electrically Isolated	<b>Thermal Device - Winding:</b>	None
<b>Feedback Device:</b>	NO FEEDBACK	<b>Vibration Sensor Indicator:</b>	No Vibration Sensor
<b>Front Face Code:</b>	Standard	<b>Winding Thermal 1:</b>	None
		<b>Winding Thermal 2:</b>	None

Nameplate NP1669L										
CAT.NO.	CEFWWDWM3546T									
SPEC.	35E1678M492G1									
HP	1									
VOLTS	208-230/460									
AMP	3.1-3/1.5									
RPM	1760									
FRAME	143TC					HZ	60		PH	3
SER.F.	1.15					CODE	L		DES	B
NEMA-NOM-EFF	85.5					PF	71		CLASS	F
RATING	40C AMB-CONT									
CC	010A									
DE	6205					ODE	6205			
ENCL	TEFC					SN				
BLANK										

**AC Induction Motor Performance Data**

Record # 31554

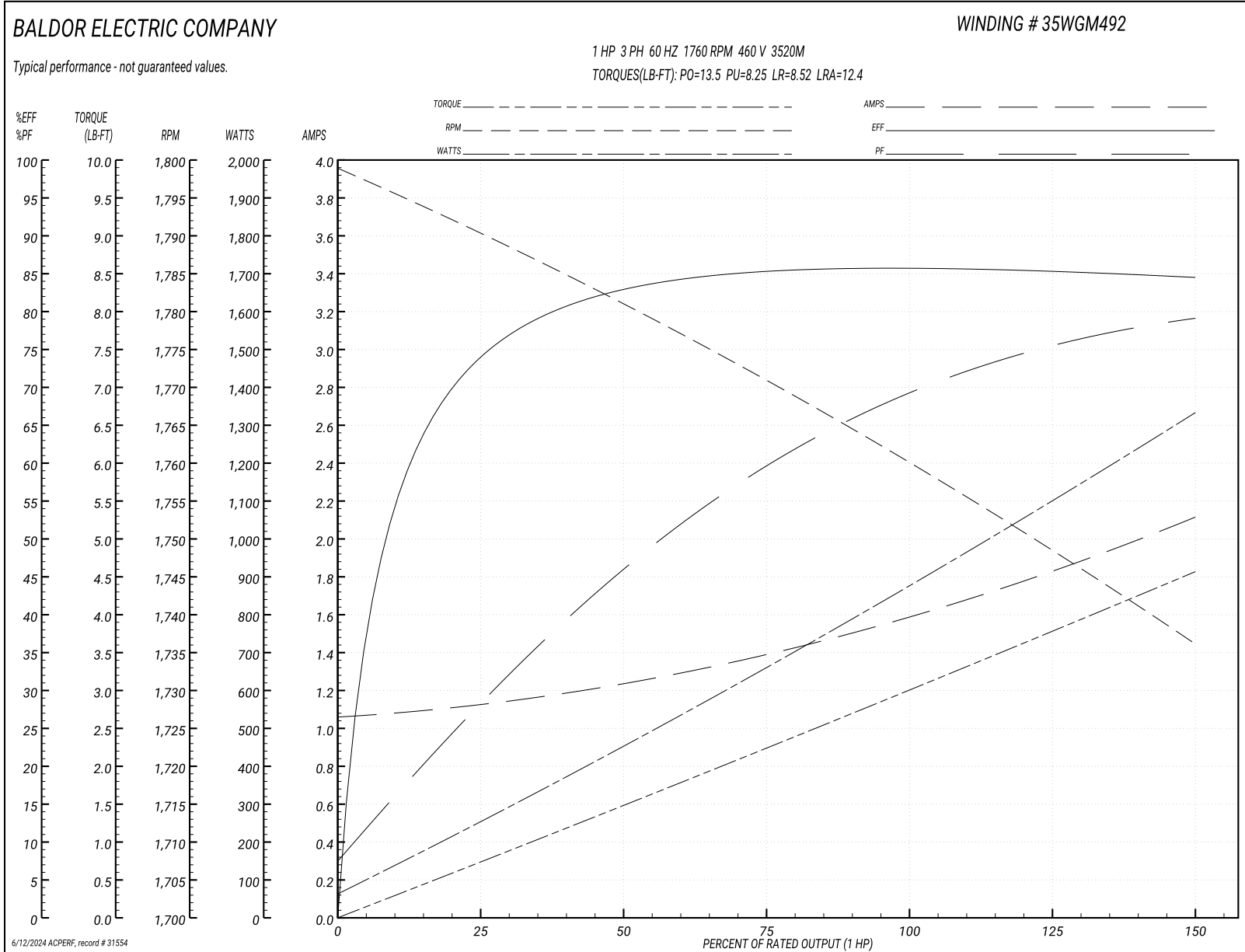
Typical performance - not guaranteed values

<b>Winding: 35WGM492-R001</b>		<b>Type: 3520M</b>		<b>Enclosure: TEFC</b>	
<b>Nameplate Data</b>			<b>460 V, 60 Hz: High Voltage Connection</b>		
<b>Rated Output (HP)</b>	1	<b>Full Load Torque</b>	2.99 LB-FT		
<b>Volts</b>	230/460	<b>Start Configuration</b>	direct on line		
<b>Full Load Amps</b>	3.1-3/1.5	<b>Breakdown Torque</b>	13.5 LB-FT		
<b>R.P.M.</b>	1760	<b>Pull-up Torque</b>	8.25 LB-FT		
<b>Hz</b>	60 <b>Phase</b>	3	<b>Locked-rotor Torque</b>	8.52 LB-FT	
<b>NEMA Design Code</b>	<b>B KVA Code</b>	L	<b>Starting Current</b>	12.4 A	
<b>Service Factor (S.F.)</b>	1.15		<b>No-load Current</b>	1.07 A	
<b>NEMA Nom. Eff.</b>	85.5 <b>Power Factor</b>	71	<b>Line-line Res. @ 25°C</b>	15 Ω	
<b>Rating - Duty</b>	40C AMB-CONT		<b>Temp. Rise @ Rated Load</b>	36°C	
<b>S.F. Amps</b>			<b>Temp. Rise @ S.F. Load</b>	42°C	
			<b>Locked-rotor Power Factor</b>	53.8	
			<b>Rotor inertia</b>	0.118 LB-FT <sup>2</sup>	

**Load Characteristics 460 V, 60 Hz, 1 HP**

<b>% of Rated Load</b>	<b>25</b>	<b>50</b>	<b>75</b>	<b>100</b>	<b>125</b>	<b>150</b>	<b>S.F.</b>
<b>Power Factor</b>	29	46	60	69	75	79	75
<b>Efficiency</b>	74.2	82.9	85.4	85.8	85.4	84.5	85.4
<b>Speed</b>	1790	1781	1771	1760	1749	1736	1754
<b>Line amperes</b>	1.11	1.24	1.39	1.59	1.83	2.11	1.69

Performance Graph at 460V, 60Hz, 1.0HP Typical performance - Not guaranteed values



**AC Induction Motor Performance Data**

Record # 41551

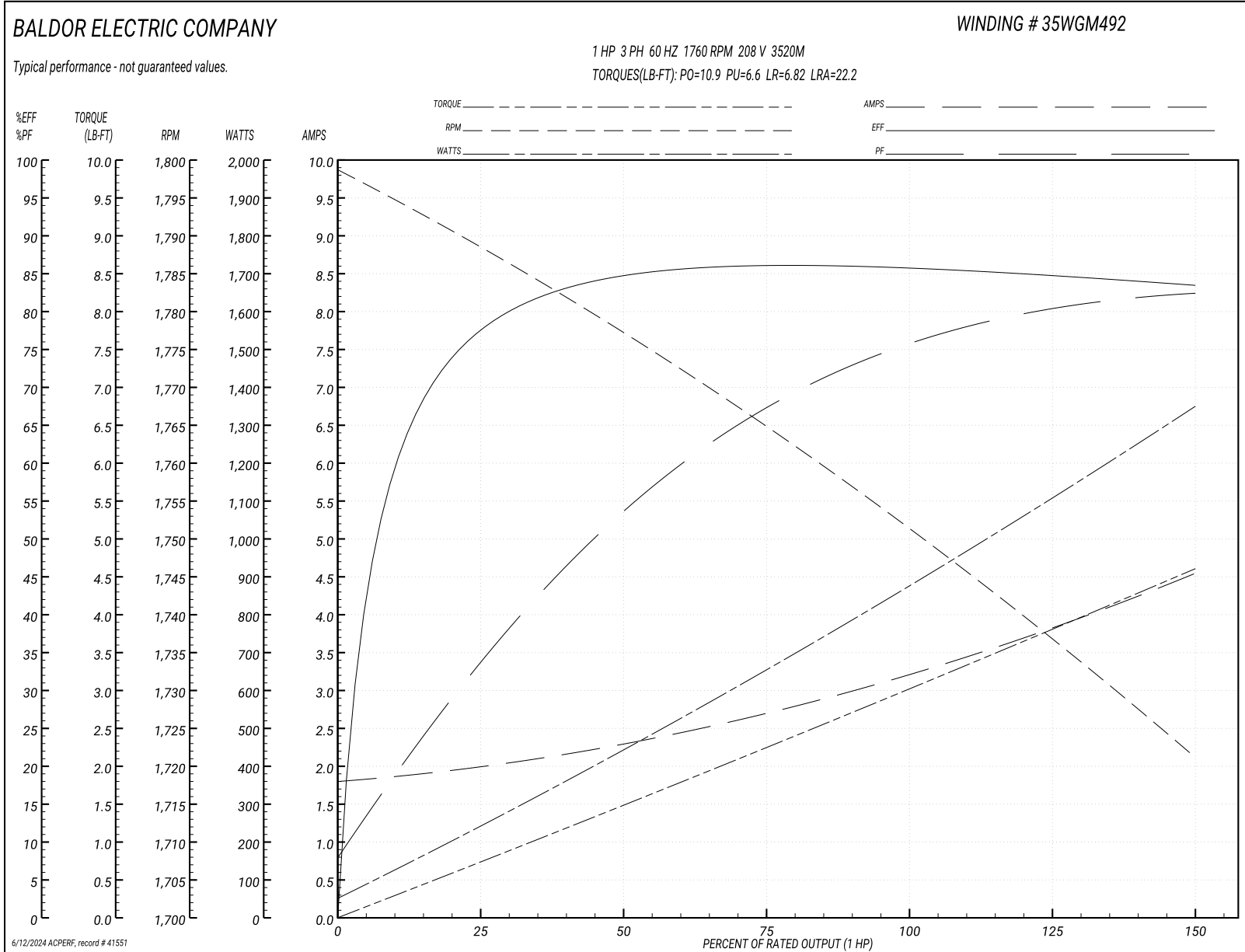
Typical performance - not guaranteed values

<b>Winding: 35WGM492-R001</b>		<b>Type: 3520M</b>		<b>Enclosure: TEFC</b>	
<b>Nameplate Data</b>			<b>208 V, 60 Hz: Low Voltage Connection</b>		
<b>Rated Output (HP)</b>	1	<b>Full Load Torque</b>	3 LB-FT		
<b>Volts</b>	208-230/460	<b>Start Configuration</b>	direct on line		
<b>Full Load Amps</b>	3.1-3/1.5	<b>Breakdown Torque</b>	10.9 LB-FT		
<b>R.P.M.</b>	1760	<b>Pull-up Torque</b>	6.6 LB-FT		
<b>Hz</b>	60 <b>Phase</b>	3	<b>Locked-rotor Torque</b>	6.82 LB-FT	
<b>NEMA Design Code</b>	<b>B KVA Code</b>	L	<b>Starting Current</b>	22.2 A	
<b>Service Factor (S.F.)</b>	1.15	<b>No-load Current</b>	1.83 A		
<b>NEMA Nom. Eff.</b>	85.5 <b>Power Factor</b>	71	<b>Line-line Res. @ 25°C</b>	3.75 Ω	
<b>Rating - Duty</b>	40C AMB-CONT	<b>Temp. Rise @ Rated Load</b>	36°C		
<b>S.F. Amps</b>		<b>Temp. Rise @ S.F. Load</b>	43°C		
		<b>Locked-rotor Power Factor</b>	53.2		
		<b>Rotor inertia</b>	0.118 LB-FT <sup>2</sup>		

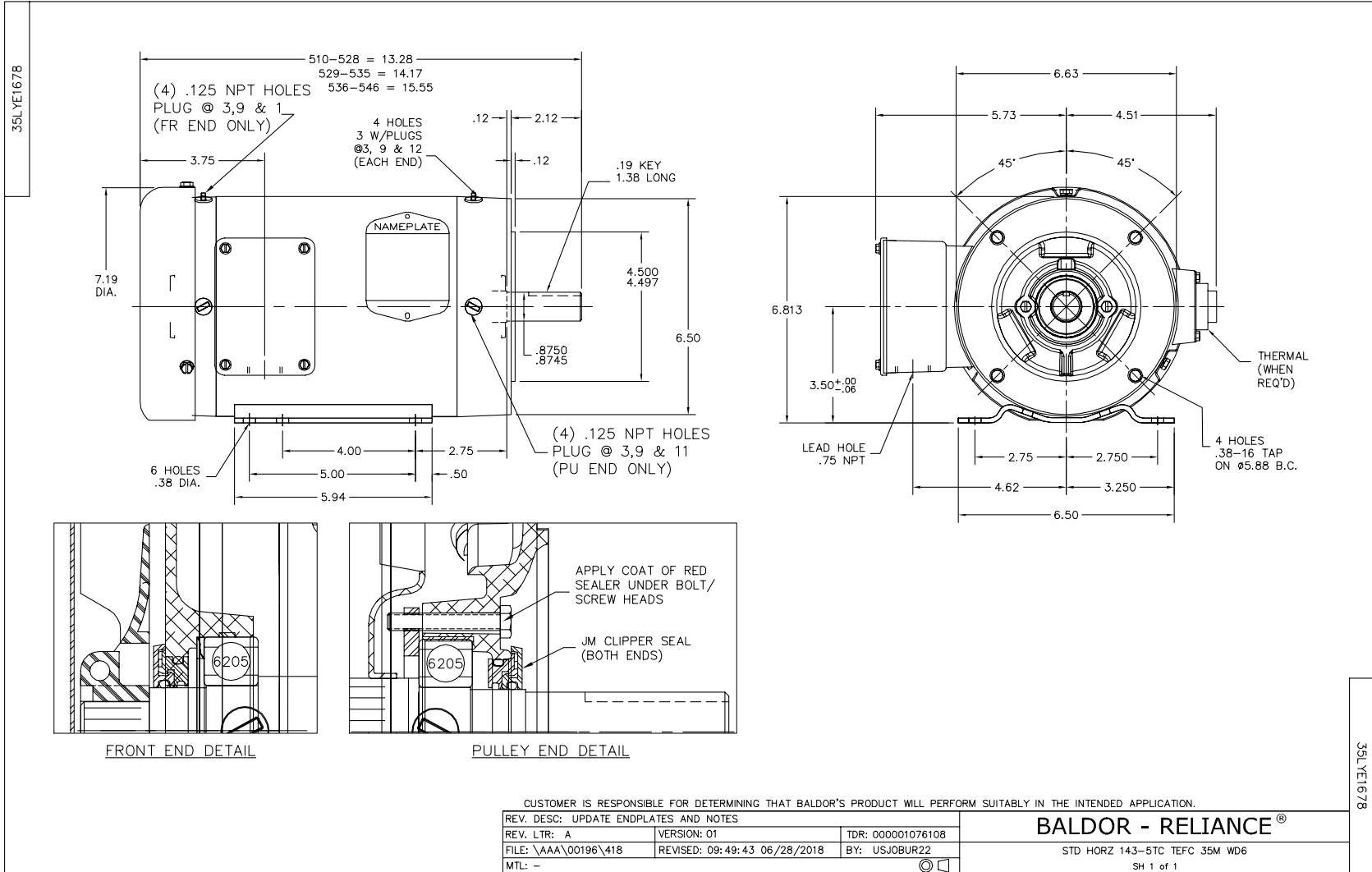
**Load Characteristics 208 V, 60 Hz, 1 HP**

<b>% of Rated Load</b>	<b>25</b>	<b>50</b>	<b>75</b>	<b>100</b>	<b>125</b>	<b>150</b>	<b>S.F.</b>
<b>Power Factor</b>	35	54	67	75	80	83	79
<b>Efficiency</b>	77.7	84.7	86	85.8	84.9	83.4	85.2
<b>Speed</b>	1788	1777	1765	1752	1737	1721	1743
<b>Line amperes</b>	1.95	2.29	2.7	3.22	3.83	4.53	3.49

Performance Graph at 208V, 60Hz, 1.0HP Typical performance - Not guaranteed values







CD0005



LOW VOLTAGE  
(2Y)



LINE

HIGH VOLTAGE  
(1Y)



LINE

NOTES:

1. INTERCHANGE ANY TWO LINE LEADS TO REVERSE ROTATION.
2. OPTIONAL THERMOSTATS ARE PROVIDED WHEN SPECIFIED.
3. ACTUAL NUMBER OF INTERNAL PARALLEL CIRCUITS MAY BE A MULTIPLE OF THOSE SHOWN ABOVE.
4. LEAD COLORS ARE OPTIONAL. LEADS MUST ALWAYS BE NUMBERED AS SHOWN.

REV. DESC: REVISE TO SHOW OPTIONAL COLORS			
REV. LTR: E	BY: JLP	REVISED: 01/19/99 10:15	TDR: 0171435
900000		FILE: AAA00005140	MDL: -
		MTL: -	

**BALDOR ELECTRIC Co.**

3PH, DV, 9 LEADS

CD0005