

**BALDOR® • RELIANCE** 

**Product Information Packet**

**CEM3611T**

**3HP, 1760RPM, 3PH, 60HZ, 182TC, 3632M, TEFC, F1**

Part Detail							
Revision:	R	Status:	PRD/A	Change #:		Proprietary:	No
Type:	AC	Elec. Spec:	36WGS266	CD Diagram:	CD0005	Mfg Plant:	
Mech. Spec:	36A002	Layout:	36LYA002	Poles:	04	Created Date:	06-29-2011
Base:	RG	Eff. Date:	05-01-2024	Leads:	9#16		

Specs			
Catalog Number:	CEM3611T	Front Shaft Indicator:	None
Enclosure:	TEFC	Heater Indicator:	No Heater
Frame:	182TC	Insulation Class:	F
Frame Material:	Steel	Inverter Code:	Inverter Ready
Motor Letter Type:	Three Phase	KVA Code:	K
Output @ Frequency:	3.000 HP @ 60 HZ	Lifting Lugs:	No Lifting Lugs
Synchronous Speed @ Frequency:	1800 RPM @ 60 HZ	Locked Bearing Indicator:	Locked Bearing
Voltage @ Frequency:	460.0 V @ 60 HZ	Motor Lead Quantity/Wire Size:	9 @ 16 AWG
	230.0 V @ 60 HZ	Motor Lead Exit:	Ko Box
Haz Area Class and Group:	None	Motor Lead Termination:	Flying Leads
Haz Area Division:	Not Applicable	Motor Type:	3632M
Agency Approvals:	NEMA_PREMIUM	Mounting Arrangement:	F1
	UR	Power Factor:	75
	NEMA PREMIUM	Product Family:	General Purpose
	CSA EEV	Pulley End Bearing Type:	Ball
Auxillary Box:	No Auxillary Box	Pulley Face Code:	C-Face
Auxillary Box Lead Termination:	None	Pulley Shaft Indicator:	Standard
Base Indicator:	Rigid	Rodent Screen:	None

<b>Bearing Grease Type:</b>	Polyrex EM (-20F +300F)	<b>Shaft Extension Location:</b>	Pulley End
<b>Blower:</b>	None	<b>Shaft Ground Indicator:</b>	No Shaft Grounding
<b>Current @ Voltage:</b>	8.400 A @ 230.0 V	<b>Shaft Rotation:</b>	Reversible
	9.000 A @ 208.0 V	<b>Shaft Slinger Indicator:</b>	No Slinger
	4.200 A @ 460.0 V	<b>Speed Code:</b>	Single Speed
<b>Design Code:</b>	B	<b>Motor Standards:</b>	NEMA
<b>Drip Cover:</b>	No Drip Cover	<b>Starting Method:</b>	Direct on line
<b>Duty Rating:</b>	CONT	<b>Thermal Device - Bearing:</b>	None
<b>Electrically Isolated Bearing:</b>	Not Electrically Isolated	<b>Thermal Device - Winding:</b>	None
<b>Feedback Device:</b>	NO FEEDBACK	<b>Vibration Sensor Indicator:</b>	No Vibration Sensor
<b>Front Face Code:</b>	Standard	<b>Winding Thermal 1:</b>	None
		<b>Winding Thermal 2:</b>	None

Nameplate NP3441LUA

CAT.NO.	CEM3611T							
SPEC	36A002S266G1							
HP	3							
VOLTS	230/460							
AMPS	8.4/4.2							
RPM	1760							
FRAME	182TC		HZ	60		PH	3	
SF	1.15		CODE	K	DES	B	CLASS	F
NEMA NOM. EFF	89.5		PF	75				
RATING	40C AMB-CONT							
CC	010A							
ENCL	TEFC		SER					
DE	6206		ODE	6205				
VPWM INVERTER READY								
CT6-60H(10:1)VT3-60H(20:1	50Hz 3HP 190/380V 9.6/4.8A							SF1.0

**AC Induction Motor Performance Data**

Record # 53364

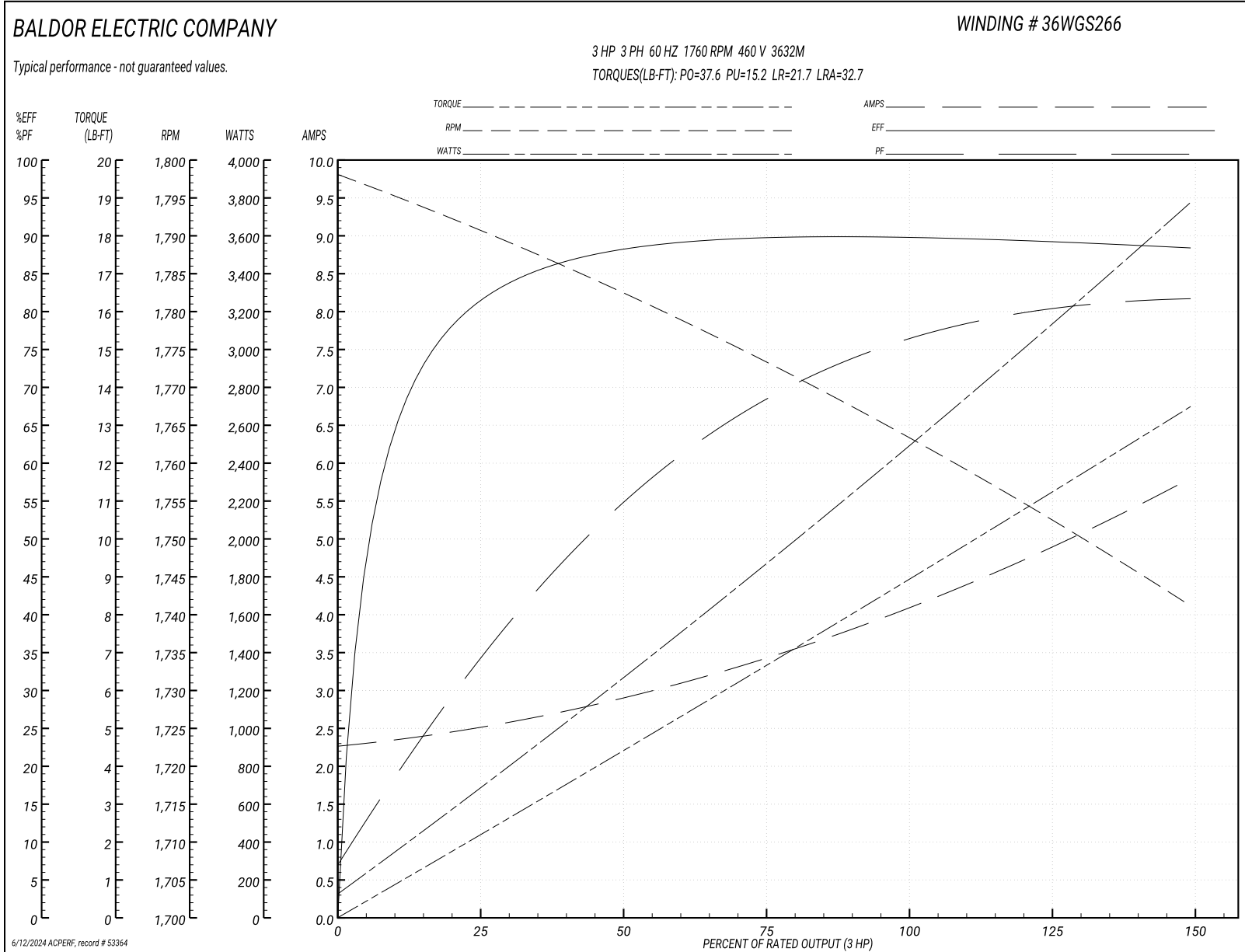
Typical performance - not guaranteed values

<b>Winding: 36WGS266-R006</b>		<b>Type: 3632M</b>		<b>Enclosure: TEFC</b>	
<b>Nameplate Data</b>			<b>460 V, 60 Hz: High Voltage Connection</b>		
<b>Rated Output (HP)</b>	3	<b>Full Load Torque</b>	8.8 LB-FT		
<b>Volts</b>	230/460	<b>Start Configuration</b>	direct on line		
<b>Full Load Amps</b>	8.4/4.2	<b>Breakdown Torque</b>	37.6 LB-FT		
<b>R.P.M.</b>	1760	<b>Pull-up Torque</b>	15.2 LB-FT		
<b>Hz</b>	60 <b>Phase</b>	3	<b>Locked-rotor Torque</b>	21.7 LB-FT	
<b>NEMA Design Code</b>	<b>B KVA Code</b>	K	<b>Starting Current</b>	32.7 A	
<b>Service Factor (S.F.)</b>	1.15	<b>No-load Current</b>	2.3 A		
<b>NEMA Nom. Eff.</b>	89.5	<b>Power Factor</b>	75	<b>Line-line Res. @ 25°C</b>	3.81 Ω
<b>Rating - Duty</b>	40C AMB-CONT		<b>Temp. Rise @ Rated Load</b>	44°C	
<b>S.F. Amps</b>			<b>Temp. Rise @ S.F. Load</b>	52°C	
			<b>Locked-rotor Power Factor</b>	42.2	
			<b>Rotor inertia</b>	0.298 LB-FT <sup>2</sup>	

**Load Characteristics 460 V, 60 Hz, 3 HP**

<b>% of Rated Load</b>	<b>25</b>	<b>50</b>	<b>75</b>	<b>100</b>	<b>125</b>	<b>150</b>	<b>S.F.</b>
<b>Power Factor</b>	35	55	68	75	80	82	77
<b>Efficiency</b>	81.1	87.8	89.6	89.8	89.7	88.2	89.2
<b>Speed</b>	1791	1783	1773	1764	1753	1741	1754
<b>Line amperes</b>	2.47	2.85	3.43	4.09	4.89	5.78	4.63

Performance Graph at 460V, 60Hz, 3.0HP Typical performance - Not guaranteed values



**AC Induction Motor Performance Data**

Record # 57957

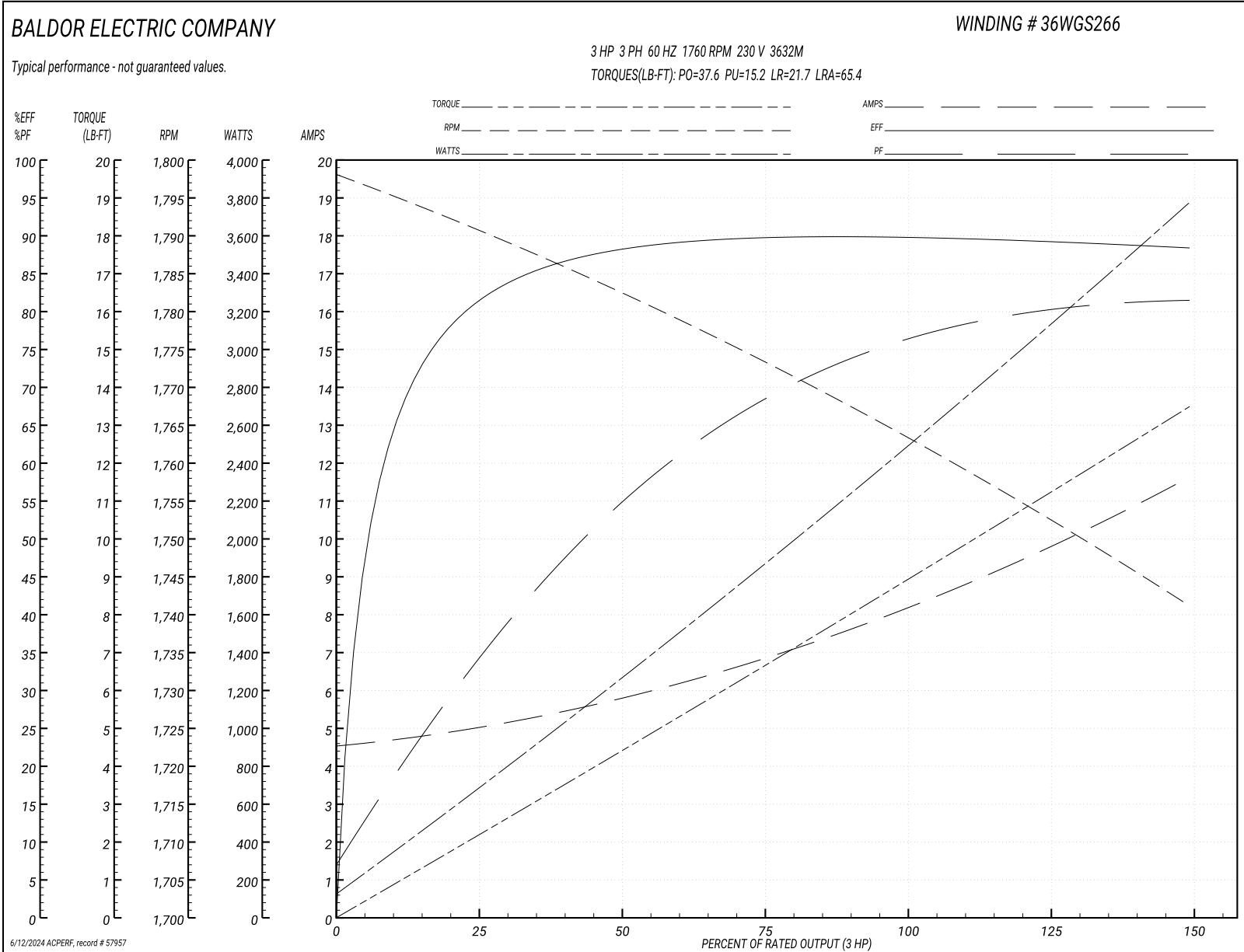
Typical performance - not guaranteed values

<b>Winding: 36WGS266-R006</b>		<b>Type: 3632M</b>		<b>Enclosure: TEFC</b>	
<b>Nameplate Data</b>			<b>230 V, 60 Hz: Low Voltage Connection</b>		
<b>Rated Output (HP)</b>	3	<b>Full Load Torque</b>	8.8 LB-FT		
<b>Volts</b>	230/460	<b>Start Configuration</b>	direct on line		
<b>Full Load Amps</b>	8.4/4.2	<b>Breakdown Torque</b>	37.6 LB-FT		
<b>R.P.M.</b>	1760	<b>Pull-up Torque</b>	15.2 LB-FT		
<b>Hz</b>	60 <b>Phase</b>	3	<b>Locked-rotor Torque</b>	21.7 LB-FT	
<b>NEMA Design Code</b>	<b>B KVA Code</b>	K	<b>Starting Current</b>	65.4 A	
<b>Service Factor (S.F.)</b>	1.15	<b>No-load Current</b>	4.6 A		
<b>NEMA Nom. Eff.</b>	89.5	<b>Power Factor</b>	75	<b>Line-line Res. @ 25°C</b>	0.953 Ω
<b>Rating - Duty</b>	40C AMB-CONT		<b>Temp. Rise @ Rated Load</b>	44°C	
<b>S.F. Amps</b>			<b>Temp. Rise @ S.F. Load</b>	52°C	
			<b>Locked-rotor Power Factor</b>	42.2	
			<b>Rotor inertia</b>	0.298 LB-FT <sup>2</sup>	

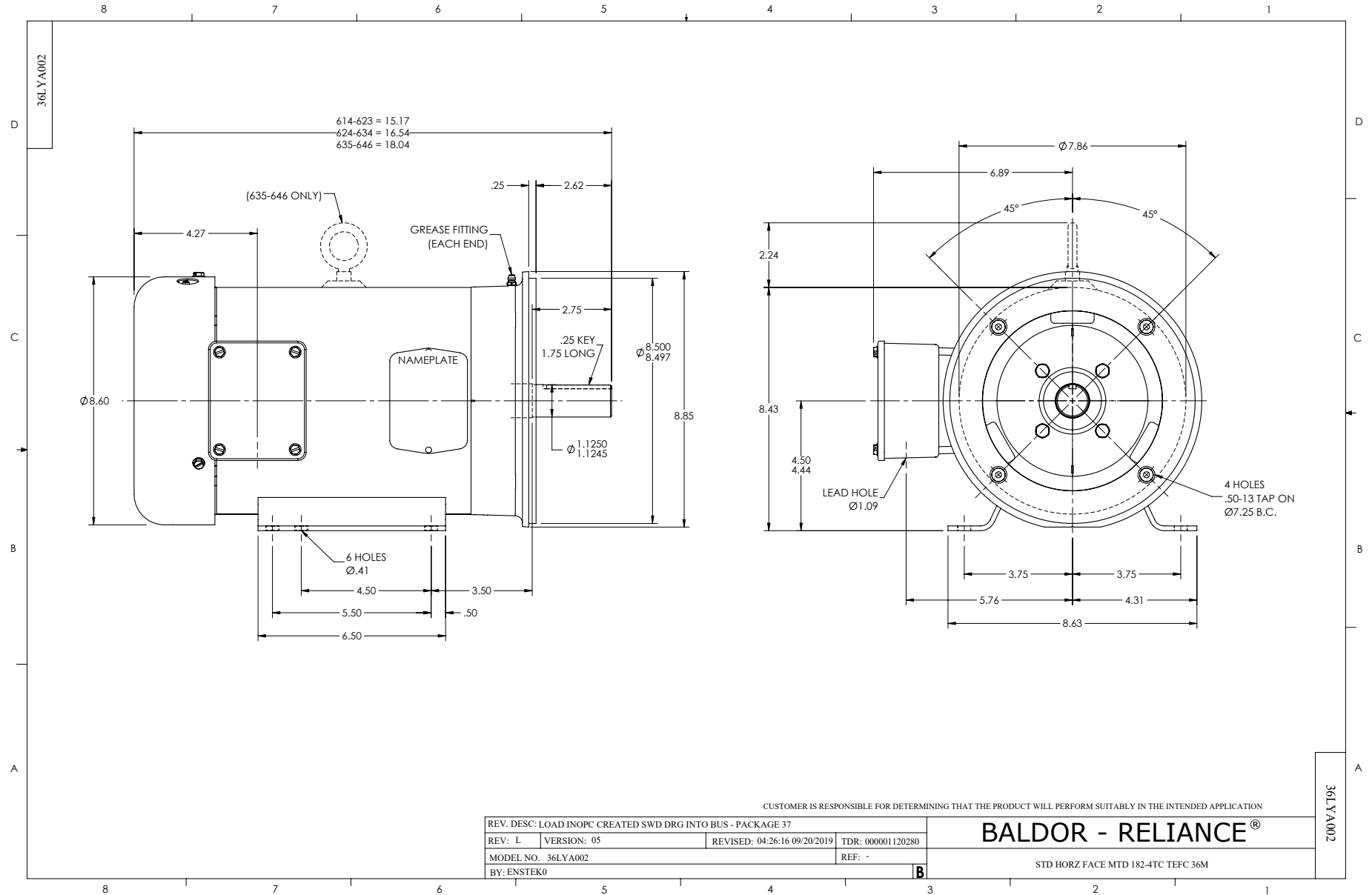
**Load Characteristics 230 V, 60 Hz, 3 HP**

<b>% of Rated Load</b>	<b>25</b>	<b>50</b>	<b>75</b>	<b>100</b>	<b>125</b>	<b>150</b>	<b>S.F.</b>
<b>Power Factor</b>	35	55	68	75	80	82	78
<b>Efficiency</b>	81.1	87.8	89.6	89.8	89.7	88.2	89.7
<b>Speed</b>	1791	1783	1773	1764	1753	1741	1757
<b>Line amperes</b>	4.94	5.7	6.86	8.18	9.78	11.6	9.14

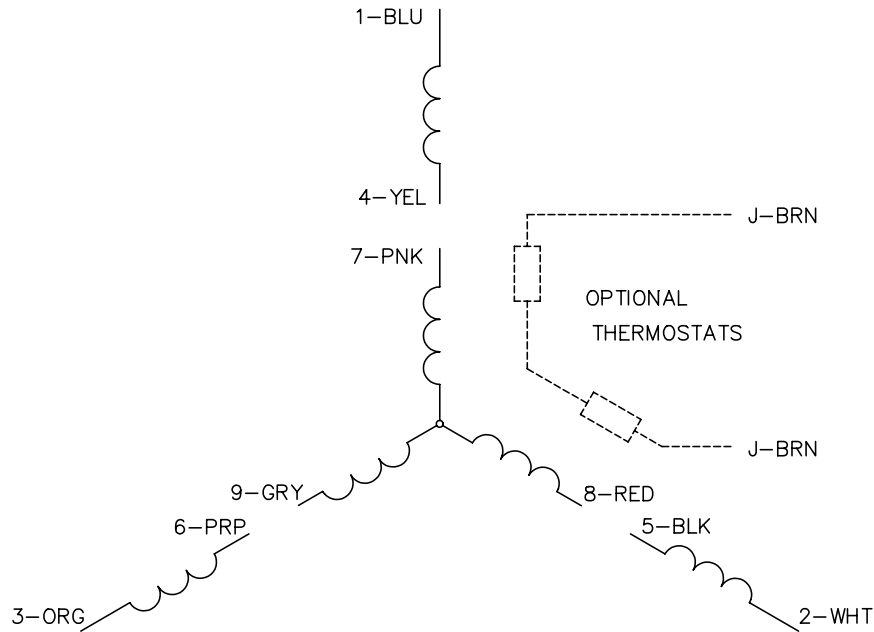
Performance Graph at 230V, 60Hz, 3.0HP Typical performance - Not guaranteed values







CD0005

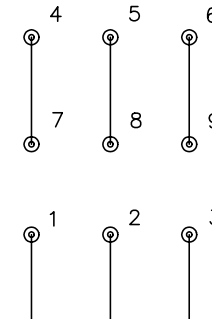


LOW VOLTAGE  
(2Y)



LINE

HIGH VOLTAGE  
(1Y)



LINE

NOTES:

1. INTERCHANGE ANY TWO LINE LEADS TO REVERSE ROTATION.
2. OPTIONAL THERMOSTATS ARE PROVIDED WHEN SPECIFIED.
3. ACTUAL NUMBER OF INTERNAL PARALLEL CIRCUITS MAY BE A MULTIPLE OF THOSE SHOWN ABOVE.
4. LEAD COLORS ARE OPTIONAL. LEADS MUST ALWAYS BE NUMBERED AS SHOWN.

REV. DESC: REVISE TO SHOW OPTIONAL COLORS			
REV. LTR: E	BY: JLP	REVISED: 01/19/99 10:15	TDR: 0171435
900000		FILE: AAA00005140	MDL: -
		MTL: -	

**BALDOR ELECTRIC Co.**

3PH, DV, 9 LEADS

CD0005