

**BALDOR® • RELIANCE** 

**Product Information Packet**

**CEM3774T**

**10HP,1765RPM,3PH,60HZ,215TC,0748M,TEFC,F**

Part Detail							
Revision:	D	Status:	PRD/A	Change #:		Proprietary:	No
Type:	AC	Elec. Spec:	07WGT511	CD Diagram:	CD0005	Mfg Plant:	
Mech. Spec:	07H058	Layout:	07LYH058	Poles:	04	Created Date:	02-08-2021
Base:	RG	Eff. Date:	01-13-2023	Leads:	9#14		

Specs			
Catalog Number:	CEM3774T	Front Shaft Indicator:	None
Enclosure:	TEFC	Heater Indicator:	No Heater
Frame:	215TC	Insulation Class:	F
Frame Material:	Iron	Inverter Code:	Inverter Ready
Motor Letter Type:	Three Phase	KVA Code:	H
Output @ Frequency:	10.000 HP @ 60 HZ	Lifting Lugs:	Standard Lifting Lugs
Synchronous Speed @ Frequency:	1800 RPM @ 60 HZ	Locked Bearing Indicator:	Locked Bearing
Voltage @ Frequency:	460.0 V @ 60 HZ	Motor Lead Quantity/Wire Size:	9 @ 14 AWG
	230.0 V @ 60 HZ	Motor Lead Exit:	Ko Box
XP Class and Group:	None	Motor Lead Termination:	Flying Leads
XP Division:	Not Applicable	Motor Type:	0748M
Agency Approvals:	NEMA_PREMIUM	Mounting Arrangement:	F1
	UR	Power Factor:	83
	NEMA PREMIUM	Product Family:	General Purpose
	CSA EEV	Pulley End Bearing Type:	Ball
Auxillary Box:	No Auxillary Box	Pulley Face Code:	C-Face
Auxillary Box Lead Termination:	None	Pulley Shaft Indicator:	Standard
Base Indicator:	Rigid	Rodent Screen:	None

<b>Bearing Grease Type:</b>	Polyrex EM (-20F +300F)	<b>Shaft Extension Location:</b>	Pulley End
<b>Blower:</b>	None	<b>Shaft Ground Indicator:</b>	No Shaft Grounding
<b>Current @ Voltage:</b>	24.600 A @ 230.0 V	<b>Shaft Rotation:</b>	Reversible
	27.000 A @ 208.0 V	<b>Shaft Slinger Indicator:</b>	No Slinger
	12.300 A @ 460.0 V	<b>Speed Code:</b>	Single Speed
<b>Design Code:</b>	B	<b>Motor Standards:</b>	NEMA
<b>Drip Cover:</b>	No Drip Cover	<b>Starting Method:</b>	Direct on line
<b>Duty Rating:</b>	CONT	<b>Thermal Device - Bearing:</b>	None
<b>Electrically Isolated Bearing:</b>	Not Electrically Isolated	<b>Thermal Device - Winding:</b>	None
<b>Feedback Device:</b>	NO FEEDBACK	<b>Vibration Sensor Indicator:</b>	No Vibration Sensor
<b>Front Face Code:</b>	Standard	<b>Winding Thermal 1:</b>	None
		<b>Winding Thermal 2:</b>	None

Nameplate NP3441LUA	
CAT.NO.	CEM3774T
SPEC	07H058T511G1
HP	10
VOLTS	230/460
AMPS	24.6/12.3
RPM	1765
FRAME	215TC
	HZ 60
	PH 3
SF	1.15
	CODE H
	DES B
	CLASS F
NEMA NOM. EFF	91.7
	PF 83
RATING	40C AMB-CONT
CC	010A
	USABLE AT 208V N/A
ENCL	TEFC
	SER
DE	6307
	ODE 6206
VPWM INVERTER READY	SFA 28.2/14.1
CT6-60H(10:1)VT3-60H(20:1	
	50HZ 10HP 190/380V 29.8/14.9A
	SF1.0

**AC Induction Motor Performance Data**

Record # 85502

Preliminary Data Sheet

<b>Winding: 07WGT511-R001</b>		<b>Type: 0748M</b>		<b>Enclosure: TEFC</b>	
<b>Nameplate Data</b>			<b>460 V, 60 Hz: High Voltage Connection</b>		
<b>Rated Output (HP)</b>	10	<b>Full Load Torque</b>	29.8 LB-FT		
<b>Volts</b>	230/460	<b>Start Configuration</b>	direct on line		
<b>Full Load Amps</b>	24.6/12.3	<b>Breakdown Torque</b>	84.1 LB-FT		
<b>R.P.M.</b>	1765	<b>Pull-up Torque</b>	39.8 LB-FT		
<b>Hz</b>	60 Phase	<b>Locked-rotor Torque</b>	50.9 LB-FT		
<b>NEMA Design Code</b>	B	<b>Starting Current</b>	85.9 A		
<b>Service Factor (S.F.)</b>	1.15	<b>No-load Current</b>	4.67 A		
<b>NEMA Nom. Eff.</b>	91.7	<b>Line-line Res. @ 25°C</b>	1.11 Ω		
<b>Rating - Duty</b>	40C AMB-CONT	<b>Temp. Rise @ Rated Load</b>	70°C		
<b>S.F. Amps</b>	28.3/14.15	<b>Temp. Rise @ S.F. Load</b>	93°C		
		<b>Locked-rotor Power Factor</b>	40.4		
		<b>Rotor inertia</b>	1.18 lb-ft <sup>2</sup>		

**Load Characteristics 460 V, 60 Hz, 10 HP**

<b>% of Rated Load</b>	<b>25</b>	<b>50</b>	<b>75</b>	<b>100</b>	<b>125</b>	<b>150</b>	<b>S.F.</b>
<b>Power Factor</b>	48	70	79	83	85	85	84
<b>Efficiency</b>	89.8	92.6	92.6	91.7	90.4	88.8	90.7
<b>Speed</b>	1791	1783	1774	1763	1752	1739	1753
<b>Line amperes</b>	5.44	7.24	9.6	12.3	15.3	18.6	14.1

**AC Induction Motor Performance Data**

Record # 88389

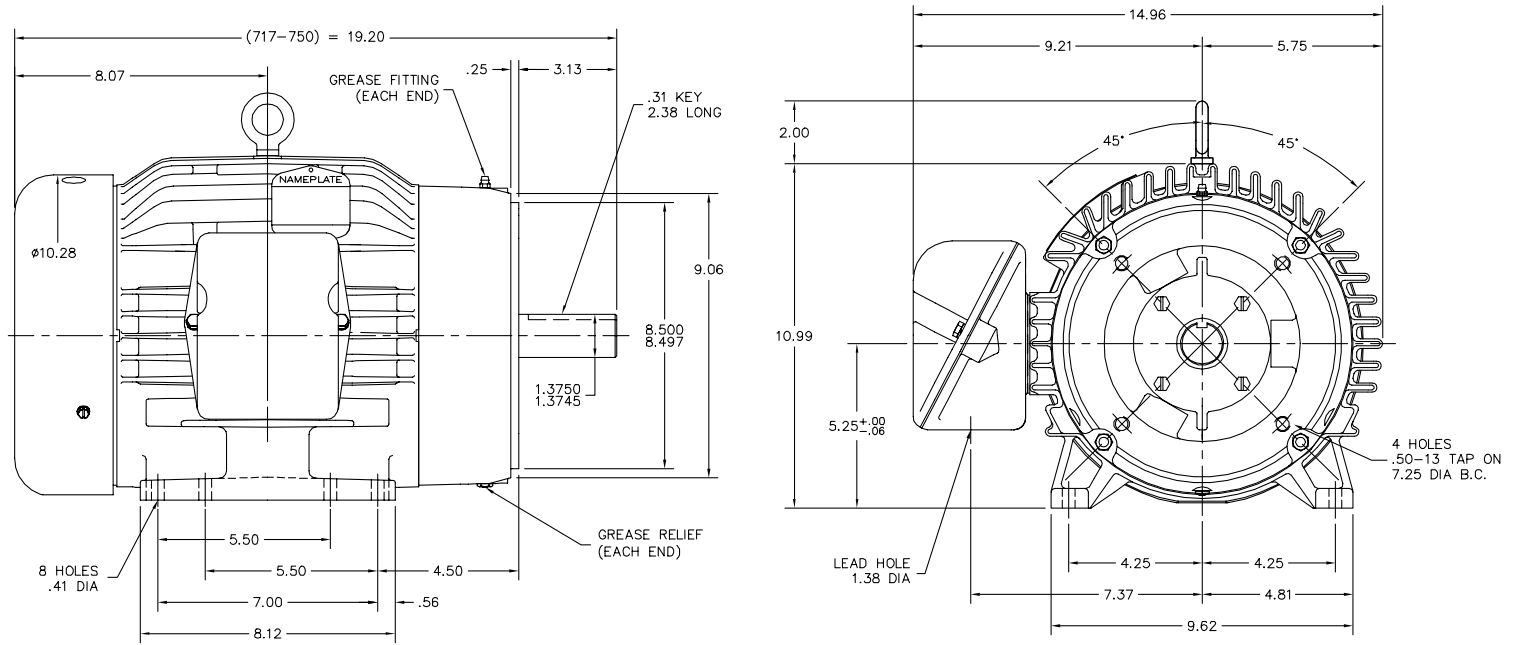
Typical performance - not guaranteed values

<b>Winding: 07WGT511-R001</b>		<b>Type: 0748M</b>		<b>Enclosure: TEFC</b>	
<b>Nameplate Data</b>			<b>400 V, 50 Hz: High Voltage Connection</b>		
<b>Rated Output (HP)</b>	10	<b>Full Load Torque</b>	35.99 LB-FT		
<b>Volts</b>	230/460	<b>Start Configuration</b>	direct on line		
<b>Full Load Amps</b>	24.6/12.3	<b>Breakdown Torque</b>	89.52 LB-FT		
<b>R.P.M.</b>	1765	<b>Pull-up Torque</b>	46.23 LB-FT		
<b>Hz</b>	60 Phase	<b>Locked-rotor Torque</b>	59.13 LB-FT		
<b>NEMA Design Code</b>	B	<b>Starting Current</b>	88.53 A		
<b>Service Factor (S.F.)</b>	1.15	<b>No-load Current</b>	5.03 A		
<b>NEMA Nom. Eff.</b>	91.7	<b>Line-line Res. @ 25°C</b>	1.09 Ω		
<b>Rating - Duty</b>	40C AMB-CONT	<b>Temp. Rise @ Rated Load</b>	91°C		
<b>S.F. Amps</b>		<b>Temp. Rise @ S.F. Load</b>	117°C		
		<b>Locked-rotor Power Factor</b>	35.2		
		<b>Rotor inertia</b>	1.18 lb-ft <sup>2</sup>		

**Load Characteristics 400 V, 50 Hz, 10 HP**

<b>% of Rated Load</b>	<b>25</b>	<b>50</b>	<b>75</b>	<b>100</b>	<b>125</b>	<b>150</b>	<b>S.F.</b>
<b>Power Factor</b>	50	71	80	84	85	85	85
<b>Efficiency</b>	90	92.4	91.9	90.4	88.9	86.5	89.5
<b>Speed</b>	1491	1482	1472	1460	1448	1433	1453
<b>Line amperes</b>	5.96	8.13	10.95	14.22	17.88	21.98	16.4

07LYH058



07LYH058

CUSTOMER IS RESPONSIBLE FOR DETERMINING THAT BALDOR'S PRODUCT WILL PERFORM SUITABLY IN THE INTENDED APPLICATION.

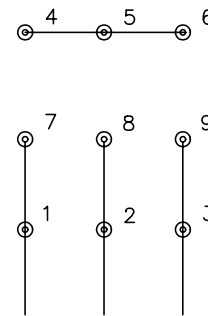
REV. DESC: OMIT GROUND LUG FROM LAYOUT		
REV. LTR: M	VERSION: 03	TDR: 000000569767
FILE: \AAA\00016\842	REVISED: 08:57:45 12/03/2010	BY: ENMATRO
MTL: -		

**BALDOR**  
 HORZ 213-5TC TEFC 307M SUPER-E  
 SH 1 of 1

CD0005

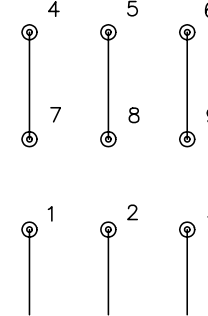


LOW VOLTAGE  
(2Y)



LINE

HIGH VOLTAGE  
(1Y)



LINE

NOTES:

1. INTERCHANGE ANY TWO LINE LEADS TO REVERSE ROTATION.
2. OPTIONAL THERMOSTATS ARE PROVIDED WHEN SPECIFIED.
3. ACTUAL NUMBER OF INTERNAL PARALLEL CIRCUITS MAY BE A MULTIPLE OF THOSE SHOWN ABOVE.
4. LEAD COLORS ARE OPTIONAL. LEADS MUST ALWAYS BE NUMBERED AS SHOWN.

REV. DESC: REVISE TO SHOW OPTIONAL COLORS

REV. LTR: E BY: JLP

REVISED: 01/19/99 10:15

TDR: 0171435

900000

FILE: AAA00005140

MDL: -

MTL: -

**BALDOR ELECTRIC Co.**

3PH, DV, 9 LEADS

CD0005