

BALDOR® • RELIANCE 

Product Information Packet

EBM3157T

2HP,1760RPM,3PH,60HZ,145T,3528M,OPEN,F1

| Part Detail | | | | | | | |
|-------------|---------|-------------|------------|-------------|--------|---------------|------------|
| Revision: | C | Status: | PRD/A | Change #: | | Proprietary: | No |
| Type: | AC | Elec. Spec: | 35WGG073 | CD Diagram: | CD0005 | Mfg Plant: | |
| Mech. Spec: | 35BB021 | Layout: | 35LYBB021 | Poles: | 04 | Created Date: | 02-17-2023 |
| Base: | RG | Eff. Date: | 04-29-2024 | Leads: | 9#18 | | |

| Specs | | | |
|---------------------------------|------------------|--------------------------------|-------------------|
| Catalog Number: | EBM3157T | Heater Indicator: | No Heater |
| Enclosure: | OPEN | Insulation Class: | F |
| Frame: | 145T | Inverter Code: | Inverter Ready |
| Frame Material: | Steel | KVA Code: | L |
| Motor Letter Type: | Three Phase | Lifting Lugs: | No Lifting Lugs |
| Output @ Frequency: | 2.000 HP @ 60 HZ | Locked Bearing Indicator: | No Locked Bearing |
| Synchronous Speed @ Frequency: | 1800 RPM @ 60 HZ | Motor Lead Quantity/Wire Size: | 9 @ 18 AWG |
| Voltage @ Frequency: | 460.0 V @ 60 HZ | Motor Lead Exit: | Ko Box |
| | 230.0 V @ 60 HZ | Motor Lead Termination: | Flying Leads |
| Haz Area Class and Group: | None | Motor Type: | 3526M |
| Haz Area Division: | Not Applicable | Mounting Arrangement: | F1 |
| Agency Approvals: | NEMA_PREMIUM | Power Factor: | 75 |
| | UR | Product Family: | General Purpose |
| | NEMA PREMIUM | Product Type: | BRAKE MOTOR |
| | CSA EEV | Pulley End Bearing Type: | Ball |
| Auxillary Box: | No Auxillary Box | Pulley Face Code: | Standard |
| Auxillary Box Lead Termination: | None | Pulley Shaft Indicator: | Standard |
| Base Indicator: | Rigid | Rodent Screen: | None |

| | | | |
|---------------------------------------|---------------------------|------------------------------------|---------------------|
| Bearing Grease Type: | Polyrex EM (-20F +300F) | RoHS Status: | ROHS COMPLIANT |
| Blower: | None | Shaft Extension Location: | Pulley End |
| Current @ Voltage: | 5.600 A @ 230.0 V | Shaft Ground Indicator: | No Shaft Grounding |
| | 5.800 A @ 208.0 V | Shaft Rotation: | Reversible |
| | 2.800 A @ 460.0 V | Shaft Slinger Indicator: | No Slinger |
| Design Code: | B | Speed Code: | Single Speed |
| Drip Cover: | No Drip Cover | Motor Standards: | NEMA |
| Duty Rating: | CONT | Starting Method: | Direct on line |
| Electrically Isolated Bearing: | Not Electrically Isolated | Thermal Device - Bearing: | None |
| Feedback Device: | NO FEEDBACK | Thermal Device - Winding: | None |
| Front Face Code: | Brake Mounting | Vibration Sensor Indicator: | No Vibration Sensor |
| Front Shaft Indicator: | None | Winding Thermal 1: | None |
| | | Winding Thermal 2: | None |

| Nameplate NP1259L | | | | | | | | | | |
|-------------------|---------------|--|------|----|-----|------|--|----|----|---|
| CAT.NO. | EBM3157T | | | | | | | | | |
| SPEC. | 35BB021G073G1 | | | | | | | | | |
| HP | 2 | | | | | | | | | |
| VOLTS | 230/460 | | | | | | | | | |
| AMP | 5.6/2.8 | | | | | | | | | |
| RPM | 1760 | | | | | | | | | |
| FRAME | 145T | | | | HZ | 60 | | | PH | 3 |
| SER.F. | 1.15 | | CODE | K | DES | B | | CL | F | |
| NEMA-NOM-EFF | 86.5 | | PF | 77 | | | | | | |
| RATING | 40C AMB-CONT | | | | | | | | | |
| CC | 010A | | | | | | | | | |
| DE | 6205 | | | | ODE | 6203 | | | | |
| ENCL | OPEN | | SN | | | | | | | |
| | SFA 6.3/3.15 | | | | | | | | | |

AC Induction Motor Performance Data

Record # 87157

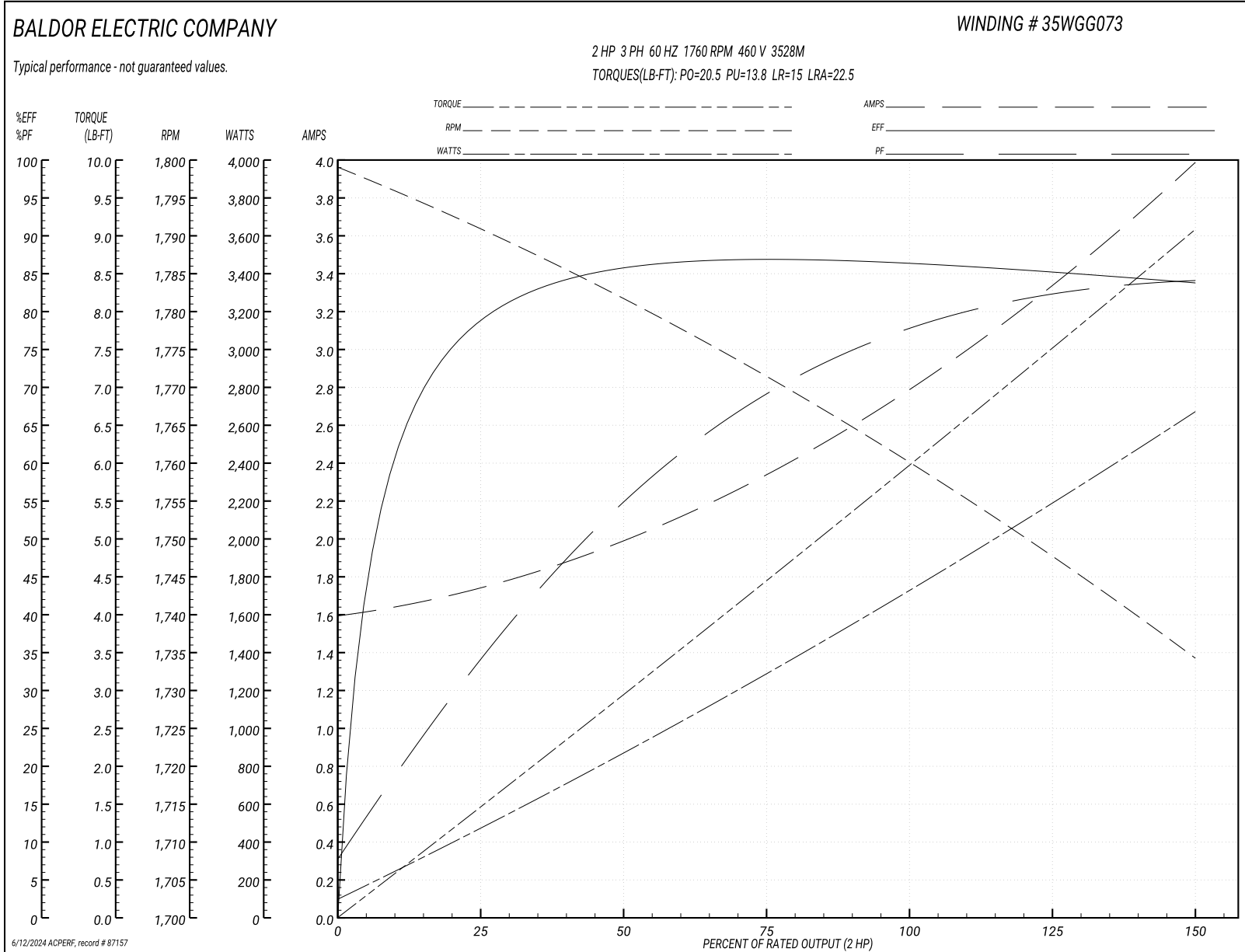
Typical performance - not guaranteed values

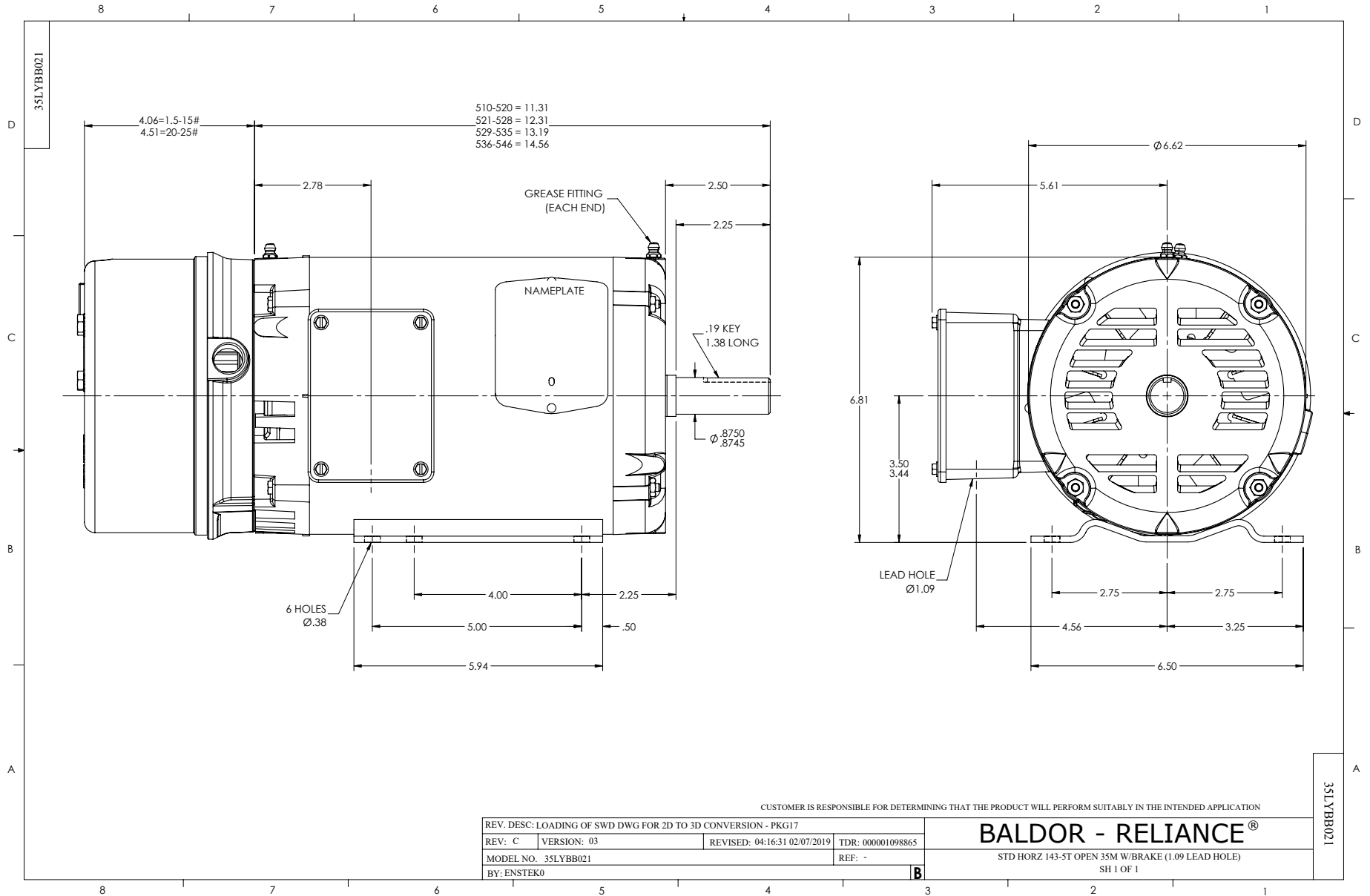
| Winding: 35WGG073-R001 | | Type: 3528M | | Enclosure: TEFC | |
|-------------------------------|-------------------|----------------------------------|--|------------------------------|--------|
| Nameplate Data | | | 460 V, 60 Hz: High Voltage Connection | | |
| Rated Output (HP) | 2 | Full Load Torque | 5.99 LB-FT | | |
| Volts | 230/460 | Start Configuration | direct on line | | |
| Full Load Amps | 5.6/2.8 | Breakdown Torque | 20.5 LB-FT | | |
| R.P.M. | 1760 | Pull-up Torque | 13.8 LB-FT | | |
| Hz | 60 Phase | 3 | Locked-rotor Torque | 15 LB-FT | |
| NEMA Design Code | B KVA Code | K | Starting Current | 22.5 A | |
| Service Factor (S.F.) | 1.15 | No-load Current | 1.62 A | | |
| NEMA Nom. Eff. | 86.5 | Power Factor | 77 | Line-line Res. @ 25°C | 9.54 Ω |
| Rating - Duty | 40C | AMB-CONT | Temp. Rise @ Rated Load | 64°C | |
| S.F. Amps | 6.3/3.15 | Temp. Rise @ S.F. Load | 77°C | | |
| | | Locked-rotor Power Factor | 57.9 | | |
| | | Rotor inertia | 0.202 lb-ft ² | | |

Load Characteristics 460 V, 60 Hz, 2 HP

| % of Rated Load | 25 | 50 | 75 | 100 | 125 | 150 | S.F. |
|------------------------|-----------|-----------|-----------|------------|------------|------------|-------------|
| Power Factor | 35 | 55 | 68 | 76 | 81 | 84 | 80 |
| Efficiency | 78.3 | 85.3 | 86.9 | 86.5 | 85.3 | 83.6 | 86.1 |
| Speed | 1791 | 1782 | 1771 | 1760 | 1748 | 1734 | 1754 |
| Line amperes | 1.71 | 1.97 | 2.34 | 2.82 | 3.36 | 3.97 | 3.13 |

Performance Graph at 460V, 60Hz, 2.0HP Typical performance - Not guaranteed values





CD0005

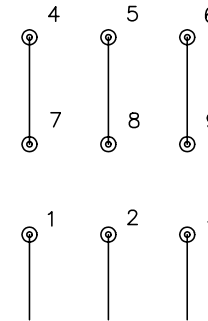


LOW VOLTAGE
(2Y)



LINE

HIGH VOLTAGE
(1Y)



LINE

NOTES:

1. INTERCHANGE ANY TWO LINE LEADS TO REVERSE ROTATION.
2. OPTIONAL THERMOSTATS ARE PROVIDED WHEN SPECIFIED.
3. ACTUAL NUMBER OF INTERNAL PARALLEL CIRCUITS MAY BE A MULTIPLE OF THOSE SHOWN ABOVE.
4. LEAD COLORS ARE OPTIONAL. LEADS MUST ALWAYS BE NUMBERED AS SHOWN.

| | | | |
|---|---------|-------------------------|--------------|
| REV. DESC: REVISE TO SHOW OPTIONAL COLORS | | | |
| REV. LTR: E | BY: JLP | REVISED: 01/19/99 10:15 | TDR: 0171435 |
| 90000 | | FILE: AAA00005140 | MDL: - |
| | | MTL: - | |

BALDOR ELECTRIC Co.

3PH, DV, 9 LEADS

CD0005