

**BALDOR® • RELIANCE** 

**Product Information Packet**

**ECP2334T**

**20HP,1770RPM,3PH,60HZ,256T,0960M,TEFC,F1**

Part Detail							
Revision:	G	Status:	PRD/A	Change #:		Proprietary:	No
Type:	AC	Elec. Spec:	09WGT459	CD Diagram:	CD0180	Mfg Plant:	
Mech. Spec:	09J371	Layout:	09LYJ371	Poles:	04	Created Date:	11-27-2017
Base:	RG	Eff. Date:	12-01-2020	Leads:	9#10		

Specs			
Catalog Number:	ECP2334T	Heater Indicator:	No Heater
Enclosure:	TEFC	Insulation Class:	F
Frame:	256T	Inverter Code:	Inverter Duty
Frame Material:	Iron	KVA Code:	J
Output @ Frequency:	20.000 HP @ 60 HZ	Lifting Lugs:	Standard Lifting Lugs
Synchronous Speed @ Frequency:	1800 RPM @ 60 HZ	Locked Bearing Indicator:	Locked Bearing
Voltage @ Frequency:	460.0 V @ 60 HZ	Motor Lead Quantity/Wire Size:	9 @ 10 AWG
	230.0 V @ 60 HZ	Motor Lead Exit:	Ko Box
XP Class and Group:	CLI GP A,B,C,D	Motor Lead Termination:	Flying Leads
XP Division:	Division II	Motor Type:	0960M
Agency Approvals:	CCSA US	Mounting Arrangement:	F1
	CSA	Power Factor:	83
	CSA EEV	Product Family:	Super-E Chemical Processing
	UR	Pulley End Bearing Type:	Ball
Auxillary Box:	No Auxillary Box	Pulley Face Code:	Standard
Auxillary Box Lead Termination:	None	Pulley Shaft Indicator:	Standard
Base Indicator:	Rigid	Rodent Screen:	None
Bearing Grease Type:	Polyrex EM (-20F +300F)	Shaft Extension Location:	Pulley End

<b>Blower:</b>	None	<b>Shaft Ground Indicator:</b>	No Shaft Grounding
<b>Constant Torque Speed Range:</b>	1.0	<b>Shaft Rotation:</b>	Reversible
<b>Current @ Voltage:</b>	52.000 A @ 208.0 V	<b>Shaft Slinger Indicator:</b>	Shaft Slinger
	48.000 A @ 230.0 V	<b>Speed Code:</b>	Single Speed
	24.000 A @ 460.0 V	<b>Motor Standards:</b>	NEMA
<b>Design Code:</b>	A	<b>Starting Method:</b>	Direct on line
<b>Drip Cover:</b>	No Drip Cover	<b>Thermal Device - Bearing:</b>	None
<b>Duty Rating:</b>	CONT	<b>Thermal Device - Winding:</b>	None
<b>Electrically Isolated Bearing:</b>	Not Electrically Isolated	<b>Vibration Sensor Indicator:</b>	No Vibration Sensor
<b>Feedback Device:</b>	NO FEEDBACK	<b>Winding Thermal 1:</b>	None
<b>Front Face Code:</b>	Standard	<b>Winding Thermal 2:</b>	None
<b>Front Shaft Indicator:</b>	None	<b>XP Temp Code:</b>	T3C

Nameplate NP3995ABEL											
CAT # ECP2334T			SER			CC 010A					
SPEC 09J371T459G1			RATING 40C AMB-CONT								
HZ	VOLTS		AMPS		RPM	HP	CODE	SF	DES	PF	NEMA NOM. EFF
60	230/460		48/24		1770	20	J	1.15	A	83 %	93 %
										%	%
PH 3	CL F	MAX RPM 2700		MAX CORR KVAR 5.35		USABLE AT 208V		52			
IP55	FR 256T	ENCL TEFC		DE BRG 6309		ODE BRG 6309					
GREASE POLYREX EM						MTR WT 322		LBS			
USABLE AT 50HZ 15HP 190/380V 44/22A						SF1.0					
CL I DIV 2 GRPS A,B,C,D						CL I ZONE 2 GRPS			IIA,IIB,IIC		TEMP T 160 C
1.0 SF ON PWM INVERTER			POWER		INV TEMP CL 180		C				
CHP 60-90	HZ 1.5:1	CT 1.0-60		HZ 60:1		VT 0-60		HZ 1000:1			
SPACE HEATER LEADS H1-H2:						TIE LIKE NUMBERS TOGETHER					
V	A	W		MAX SPACE HEATER TEMP							

**AC Induction Motor Performance Data**

Record # 68075

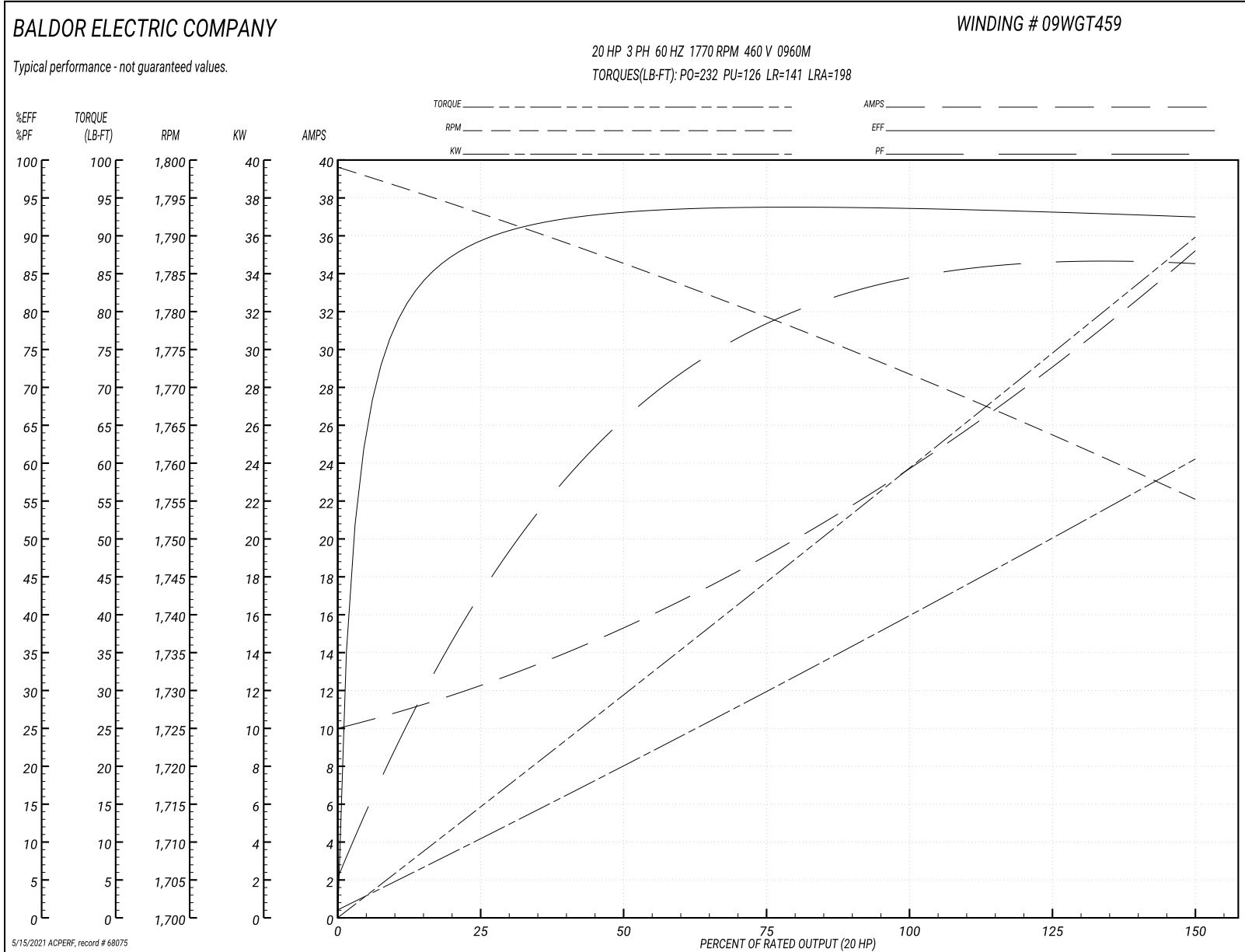
Typical performance - not guaranteed values

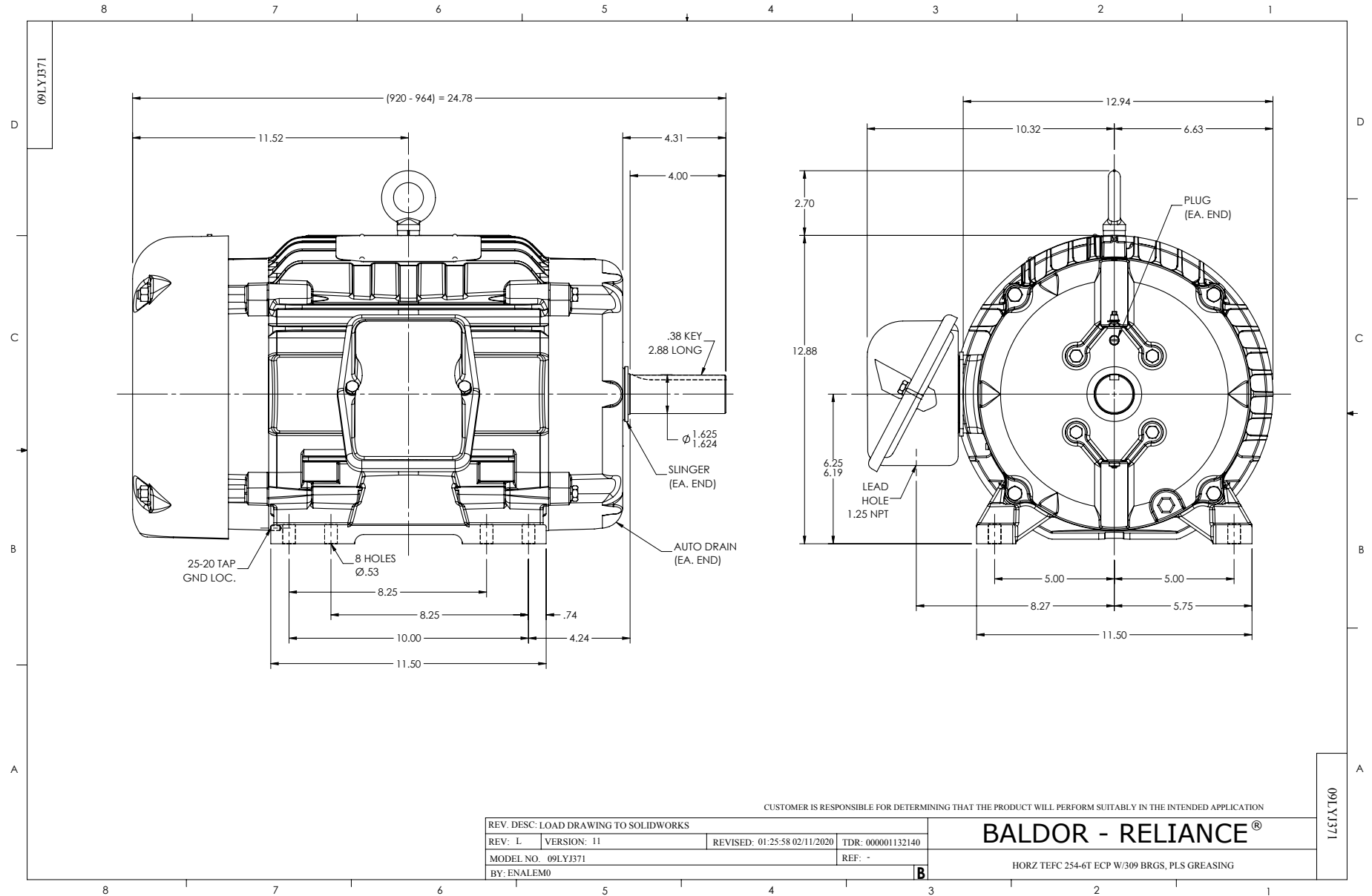
Winding: 09WGT459-R011			Type: 0960M			Enclosure: TEFC		
<b>Nameplate Data</b>				<b>460 V, 60 Hz: High Voltage Connection</b>				
Rated Output (HP)	20		Full Load Torque	59.27 LB-FT				
Volts	230/460		Start Configuration	direct on line				
Full Load Amps	48/24		Breakdown Torque	232 LB-FT				
R.P.M.	1770		Pull-up Torque	126 LB-FT				
Hz	60 Phase	3	Locked-rotor Torque	141 LB-FT				
NEMA Design Code	A	KVA Code	J	Starting Current	198 A			
Service Factor (S.F.)	1.15		No-load Current	10.4 A				
NEMA Nom. Eff.	93	Power Factor	83	Line-line Res. @ 25°C	0.33814 Ω			
Rating - Duty	40C AMB-CONT		Temp. Rise @ Rated Load	58°C				
S.F. Amps			Temp. Rise @ S.F. Load	70°C				
			Locked-rotor Power Factor	26.5				

**Load Characteristics 460 V, 60 Hz, 20 HP**

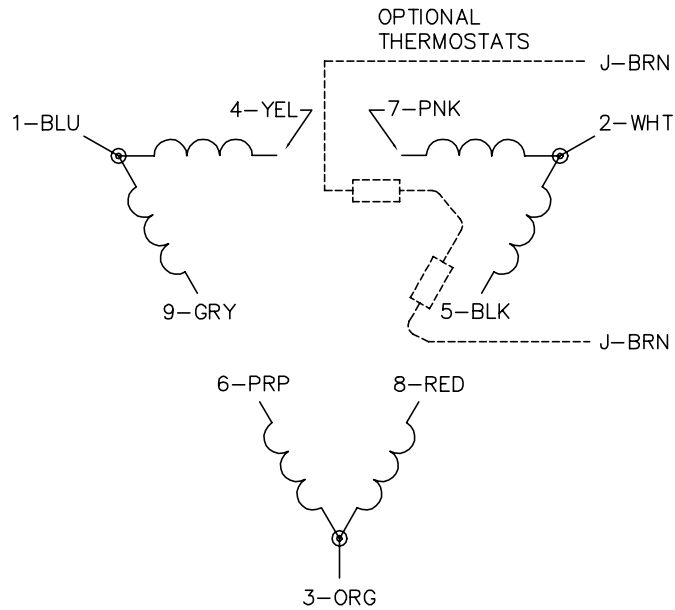
% of Rated Load	25	50	75	100	125	150	S.F.
Power Factor	45	67	78	83	86	87	85
Efficiency	89.2	93	93.7	93.6	93.1	92.4	93.3
Speed	1793.2	1786.4	1779.1	1771.9	1763.7	1755.3	1767
Line amperes	11.8	15	19.2	24	29.3	34.9	27.2

Performance Graph at 460V, 60Hz, 20.0HP Typical performance - Not guaranteed values

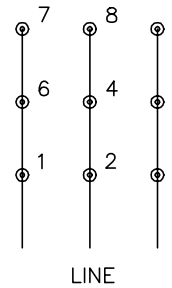




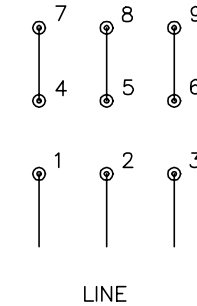
CD0180



LOW VOLTAGE  
(2D)



HIGH VOLTAGE  
(1D)



NOTES:

1. INTERCHANGE ANY TWO LINE LEADS TO REVERSE ROTATION.
2. OPTIONAL THERMOSTATS ARE PROVIDED WHEN SPECIFIED.
3. ACTUAL NUMBER OF INTERNAL PARALLEL CIRCUITS MAY BE A MULTIPLE OF THOSE SHOWN ABOVE.
4. LEAD COLORS ARE OPTIONAL. LEADS MUST ALWAYS BE NUMBERED AS SHOWN.

CD0180

REV. DESC: ADD CLASS CONN00000007		
REV. LTR: D	VERSION: 01	TDR: 000001099922
FILE: \AAA\00005\148	REVISED: 10:25:29 02/19/2019	BY: ENBRIRO
MTL: -	© □	

**BALDOR - RELIANCE®**

3PH, DV, 9 LEADS, DELTA CONNECTION

SH 1 of 1