

**BALDOR® • RELIANCE** 

**Product Information Packet**

**ECTM3665T**

**5 AIR OVERHP, 1750RPM, 3PH, 60HZ, 184T, 0642M**

Part Detail							
Revision:	E	Status:	PRD/A	Change #:		Proprietary:	No
Type:	AC	Elec. Spec:	06WGX182	CD Diagram:	CD0005	Mfg Plant:	
Mech. Spec:	06K700	Layout:	06LYK700	Poles:	04	Created Date:	08-14-2015
Base:	RG	Eff. Date:	05-05-2023	Leads:	9#16		

Specs			
Catalog Number:	ECTM3665T	Front Shaft Indicator:	None
Enclosure:	TEAO	Heater Indicator:	No Heater
Frame:	184T	Insulation Class:	F
Frame Material:	Iron	Inverter Code:	Inverter Ready
Motor Letter Type:	Three Phase	KVA Code:	J
Output @ Frequency:	5.000 HP @ 60 HZ	Lifting Lugs:	Vertical Lifting Lugs
Synchronous Speed @ Frequency:	1800 RPM @ 60 HZ	Locked Bearing Indicator:	Locked Bearing
Voltage @ Frequency:	230.0 V @ 60 HZ	Motor Lead Quantity/Wire Size:	9 @ 16 AWG
	208.0 V @ 60 HZ	Motor Lead Exit:	Ko Box
	460.0 V @ 60 HZ	Motor Lead Termination:	Flying Leads
XP Class and Group:	None	Motor Type:	0642M
XP Division:	Not Applicable	Mounting Arrangement:	F1
Agency Approvals:	NEMA_PREMIUM	Power Factor:	79
	UR	Product Family:	Chemical Processing (Not DC)
	CSA EEV	Pulley End Bearing Type:	Sealed Bearing
	CSA	Pulley Face Code:	Standard
Auxillary Box:	No Auxillary Box	Pulley Shaft Indicator:	Tapped & Key
Auxillary Box Lead Termination:	None	Rodent Screen:	None

<b>Base Indicator:</b>	Rigid	<b>Shaft Extension Location:</b>	Pulley End
<b>Bearing Grease Type:</b>	Polyrex EM (-20F +300F)	<b>Shaft Ground Indicator:</b>	No Shaft Grounding
<b>Blower:</b>	None	<b>Shaft Rotation:</b>	Reversible
<b>Current @ Voltage:</b>	6.600 A @ 460.0 V	<b>Shaft Slinger Indicator:</b>	Shaft Slinger
	14.000 A @ 208.0 V	<b>Speed Code:</b>	Single Speed
	13.200 A @ 230.0 V	<b>Motor Standards:</b>	NEMA
<b>Design Code:</b>	B	<b>Starting Method:</b>	Direct on line
<b>Drip Cover:</b>	No Drip Cover	<b>Thermal Device - Bearing:</b>	None
<b>Duty Rating:</b>	CONT	<b>Thermal Device - Winding:</b>	None
<b>Electrically Isolated Bearing:</b>	Not Electrically Isolated	<b>Vibration Sensor Indicator:</b>	No Vibration Sensor
<b>Feedback Device:</b>	NO FEEDBACK	<b>Winding Thermal 1:</b>	None
<b>Front Face Code:</b>	Standard	<b>Winding Thermal 2:</b>	None

Nameplate NP2134				
CAT.NO.	ECTM3665T			
SPEC.	06K700X182G1			
HP	5 AIR OVER			
VOLTS	208-230/460			
AMP	14-13.2/6.6			
RPM	1750			
FRAME	184T	HZ	60	
SER.F.	1.15	CODE	J	
NEMA-NOM-EFF	89.5	DES	B	
RATING	40C AMB-CONT		PH	3
CC		PF	79	
DE	6206	ODE	6205	
ENCL	TEAO	CL	F	
		SN		
		USABLE AT 208V	N/A	

**AC Induction Motor Performance Data**

Record # 35543

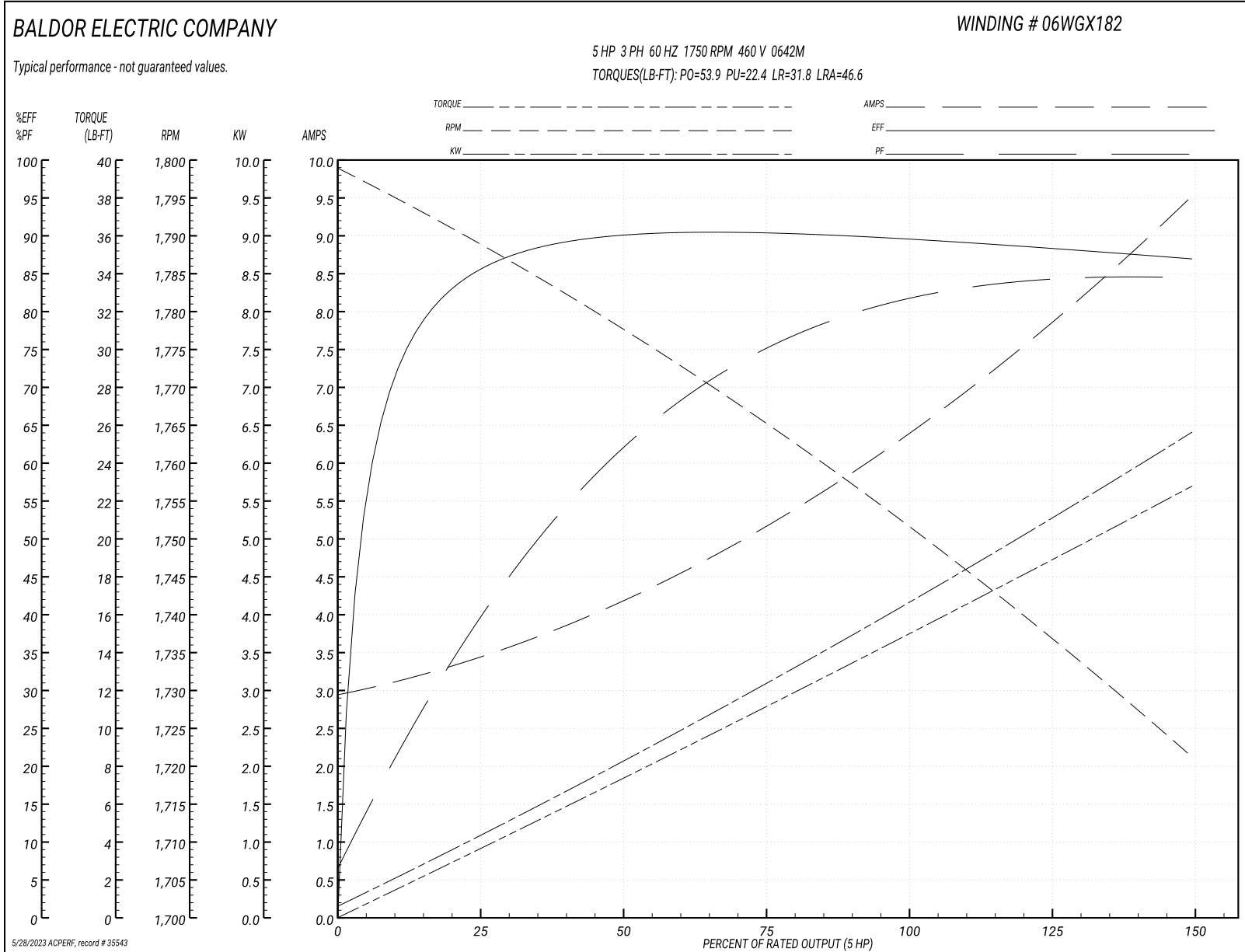
Typical performance - not guaranteed values

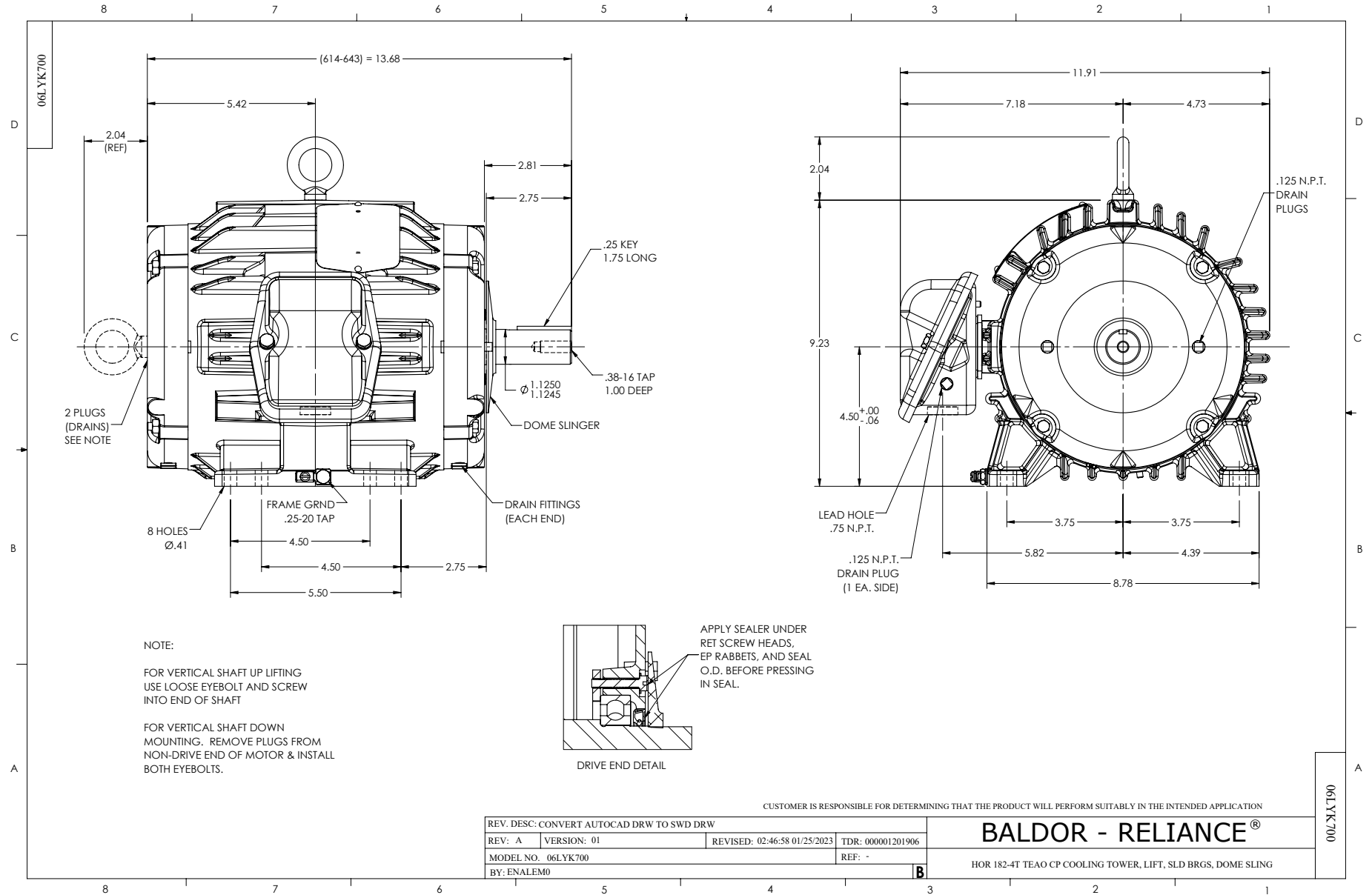
<b>Winding: 06WGX182-R003</b>		<b>Type: 0642M</b>		<b>Enclosure: TEFC</b>	
<b>Nameplate Data</b>			<b>460 V, 60 Hz: High Voltage Connection</b>		
<b>Rated Output (HP)</b>	5 AIR OVER		<b>Full Load Torque</b>	15 LB-FT	
<b>Volts</b>	208-230/460		<b>Start Configuration</b>	direct on line	
<b>Full Load Amps</b>	14-13.2/6.6		<b>Breakdown Torque</b>	53.9 LB-FT	
<b>R.P.M.</b>	1750		<b>Pull-up Torque</b>	22.4 LB-FT	
<b>Hz</b>	<b>60 Phase</b>	3	<b>Locked-rotor Torque</b>	31.8 LB-FT	
<b>NEMA Design Code</b>	<b>B KVA Code</b>	J	<b>Starting Current</b>	46.6 A	
<b>Service Factor (S.F.)</b>	1.15		<b>No-load Current</b>	3.02 A	
<b>NEMA Nom. Eff.</b>	<b>89.5 Power Factor</b>	79	<b>Line-line Res. @ 25°C</b>	2.63 Ω	
<b>Rating - Duty</b>	40C AMB-CONT		<b>Temp. Rise @ Rated Load</b>		
			<b>Locked-rotor Power Factor</b>	40.5	
			<b>Rotor inertia</b>	0.391 LB-FT <sup>2</sup>	

**Load Characteristics 460 V, 60 Hz, 5 HP**

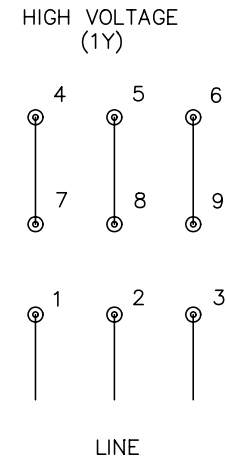
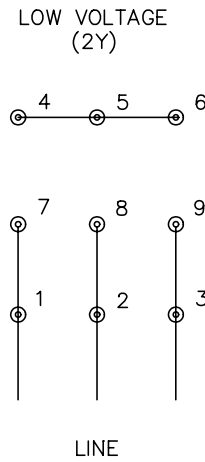
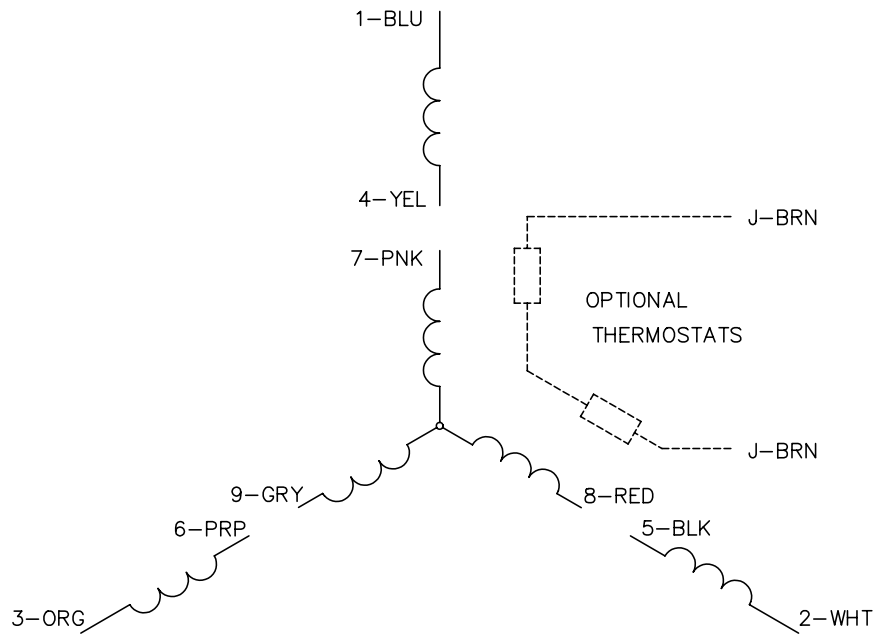
<b>% of Rated Load</b>	<b>25</b>	<b>50</b>	<b>75</b>	<b>100</b>	<b>125</b>	<b>150</b>	<b>S.F.</b>
<b>Power Factor</b>	41	63	75	81	84	85	81
<b>Efficiency</b>	85.2	89.8	90.4	89.8	88.4	86.9	88.6
<b>Speed</b>	1789	1777	1765	1752	1737	1721	1739
<b>Line amperes</b>	3.35	4.14	5.21	6.45	7.91	9.47	7.52

Performance Graph at 460V, 60Hz, 5.0HP Typical performance - Not guaranteed values





CD0005



NOTES:

1. INTERCHANGE ANY TWO LINE LEADS TO REVERSE ROTATION.
2. OPTIONAL THERMOSTATS ARE PROVIDED WHEN SPECIFIED.
3. ACTUAL NUMBER OF INTERNAL PARALLEL CIRCUITS MAY BE A MULTIPLE OF THOSE SHOWN ABOVE.
4. LEAD COLORS ARE OPTIONAL. LEADS MUST ALWAYS BE NUMBERED AS SHOWN.

REV. DESC: REVISE TO SHOW OPTIONAL COLORS			
REV. LTR: E	BY: JLP	REVISED: 01/19/99 10:15	TDR: 0171435
90000		FILE: AAA00005140	MDL: -
		MTL: -	

**BALDOR ELECTRIC Co.**

3PH, DV, 9 LEADS

CD0005