

**BALDOR® • RELIANCE** 

**Product Information Packet**

**EFM2515T-8**

**20HP, 1765RPM, 3PH, 60HZ, 256T, 3948M, OPSB, F2**

| Part Detail |       |             |            |             |        |               |            |
|-------------|-------|-------------|------------|-------------|--------|---------------|------------|
| Revision:   | E     | Status:     | PRD/A      | Change #:   |        | Proprietary:  | No         |
| Type:       | AC    | Elec. Spec: | 39WGX981   | CD Diagram: | CD0695 | Mfg Plant:    |            |
| Mech. Spec: | 39K70 | Layout:     | 39LYK070   | Poles:      | 04     | Created Date: | 06-20-2016 |
| Base:       | RG    | Eff. Date:  | 04-29-2021 | Leads:      | 6#8    |               |            |

| Specs                           |                         |                                |                       |
|---------------------------------|-------------------------|--------------------------------|-----------------------|
| Catalog Number:                 | EFM2515T-8              | Inverter Code:                 | Inverter Ready        |
| Enclosure:                      | OPSB                    | IP Rating:                     | NONE                  |
| Frame:                          | 256T                    | KVA Code:                      | G                     |
| Frame Material:                 | Steel                   | Lifting Lugs:                  | Standard Lifting Lugs |
| Output @ Frequency:             | 20.000 HP @ 60 HZ       | Locked Bearing Indicator:      | No Locked Bearing     |
| Synchronous Speed @ Frequency:  | 1800 RPM @ 60 HZ        | Motor Lead Quantity/Wire Size: | 6 @ 8 AWG             |
| Voltage @ Frequency:            | 200.0 V @ 60 HZ         | Motor Lead Exit:               | Ko Box                |
| XP Class and Group:             | None                    | Motor Lead Termination:        | Flying Leads          |
| XP Division:                    | Not Applicable          | Motor Type:                    | 3948M                 |
| Agency Approvals:               | CSA                     | Mounting Arrangement:          | F2                    |
|                                 | CSA EEV                 | Power Factor:                  | 85                    |
|                                 | UR                      | Product Family:                | General Purpose       |
| Auxillary Box:                  | No Auxillary Box        | Pulley End Bearing Type:       | Ball                  |
| Auxillary Box Lead Termination: | None                    | Pulley Face Code:              | Standard              |
| Base Indicator:                 | Rigid                   | Pulley Shaft Indicator:        | Standard              |
| Bearing Grease Type:            | Polyrex EM (-20F +300F) | Rodent Screen:                 | None                  |
| Blower:                         | None                    | Shaft Extension Location:      | Pulley End            |
| Current @ Voltage:              | 55.000 A @ 200.0 V      | Shaft Ground Indicator:        | No Shaft Grounding    |

|                                       |                           |                                    |                     |
|---------------------------------------|---------------------------|------------------------------------|---------------------|
| <b>Design Code:</b>                   | A                         | <b>Shaft Rotation:</b>             | Reversible          |
| <b>Drip Cover:</b>                    | No Drip Cover             | <b>Shaft Slinger Indicator:</b>    | No Slinger          |
| <b>Duty Rating:</b>                   | CONT                      | <b>Speed Code:</b>                 | Single Speed        |
| <b>Electrically Isolated Bearing:</b> | Not Electrically Isolated | <b>Motor Standards:</b>            | NEMA                |
| <b>Feedback Device:</b>               | NO FEEDBACK               | <b>Starting Method:</b>            | Part Winding        |
| <b>Front Face Code:</b>               | Standard                  | <b>Thermal Device - Bearing:</b>   | None                |
| <b>Front Shaft Indicator:</b>         | None                      | <b>Thermal Device - Winding:</b>   | None                |
| <b>Heater Indicator:</b>              | No Heater                 | <b>Vibration Sensor Indicator:</b> | No Vibration Sensor |
| <b>Insulation Class:</b>              | F                         | <b>Winding Thermal 1:</b>          | None                |
|                                       |                           | <b>Winding Thermal 2:</b>          | None                |

|                          |              |  |             |    |                       |      |  |           |           |   |
|--------------------------|--------------|--|-------------|----|-----------------------|------|--|-----------|-----------|---|
| <b>Nameplate NP1259L</b> |              |  |             |    |                       |      |  |           |           |   |
| <b>CAT.NO.</b>           | EFM2515T-8   |  |             |    |                       |      |  |           |           |   |
| <b>SPEC.</b>             | 39K070X981G1 |  |             |    |                       |      |  |           |           |   |
| <b>HP</b>                | 20           |  |             |    |                       |      |  |           |           |   |
| <b>VOLTS</b>             | 200          |  |             |    |                       |      |  |           |           |   |
| <b>AMP</b>               | 55           |  |             |    |                       |      |  |           |           |   |
| <b>RPM</b>               | 1765         |  |             |    |                       |      |  |           |           |   |
| <b>FRAME</b>             | 256T         |  |             |    | <b>HZ</b>             | 60   |  |           | <b>PH</b> | 3 |
| <b>SER.F.</b>            | 1.15         |  | <b>CODE</b> | G  | <b>DES</b>            | A    |  | <b>CL</b> | F         |   |
| <b>NEMA-NOM-EFF</b>      | 93           |  | <b>PF</b>   | 85 |                       |      |  |           |           |   |
| <b>RATING</b>            | 40C AMB-CONT |  |             |    |                       |      |  |           |           |   |
| <b>CC</b>                | 010A         |  |             |    | <b>USABLE AT 208V</b> |      |  |           |           |   |
| <b>DE</b>                | 6309         |  |             |    | <b>ODE</b>            | 6208 |  |           |           |   |
| <b>ENCL</b>              | OPSB         |  | <b>SN</b>   |    |                       |      |  |           |           |   |

**AC Induction Motor Performance Data**

Record # 57709

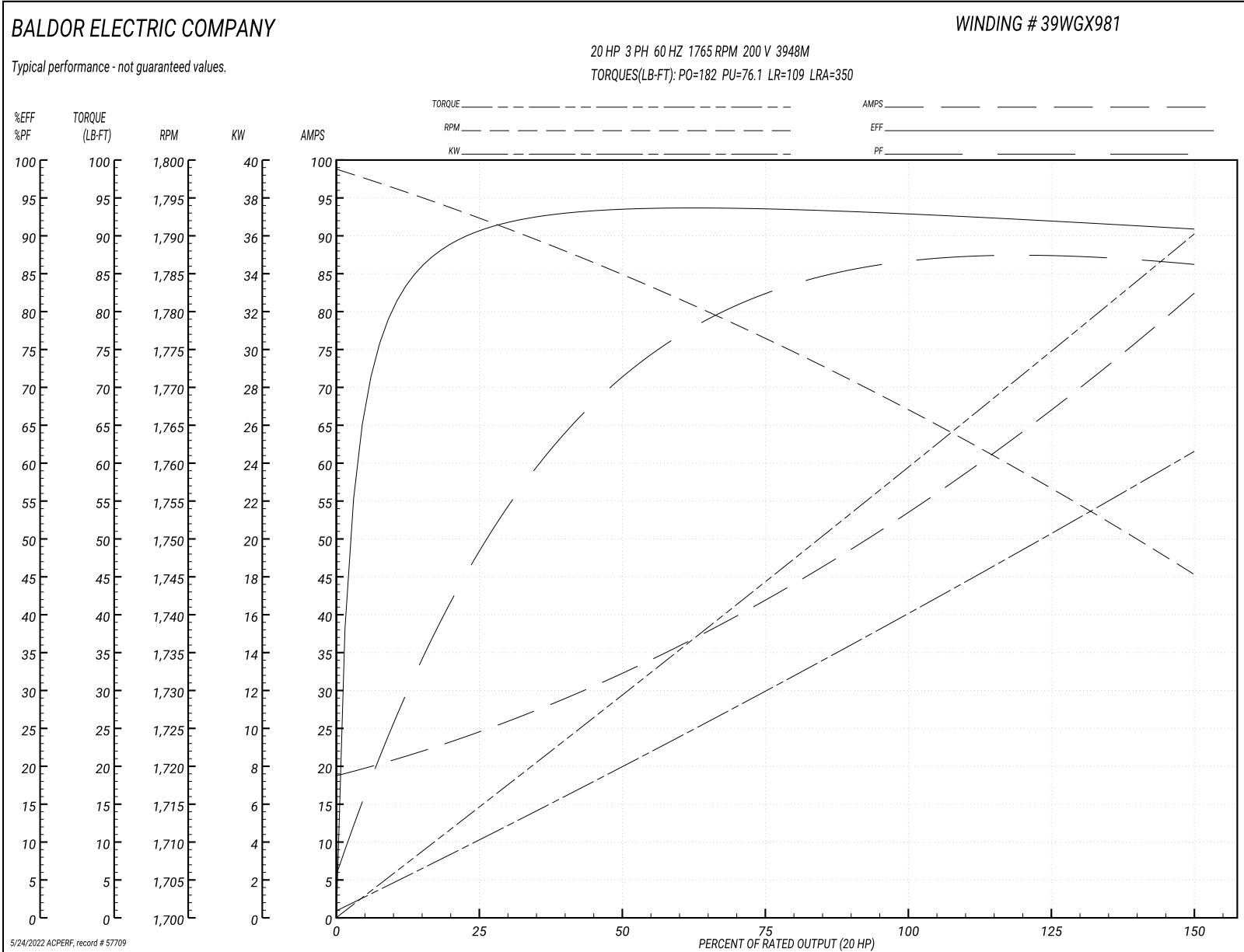
Typical performance - not guaranteed values

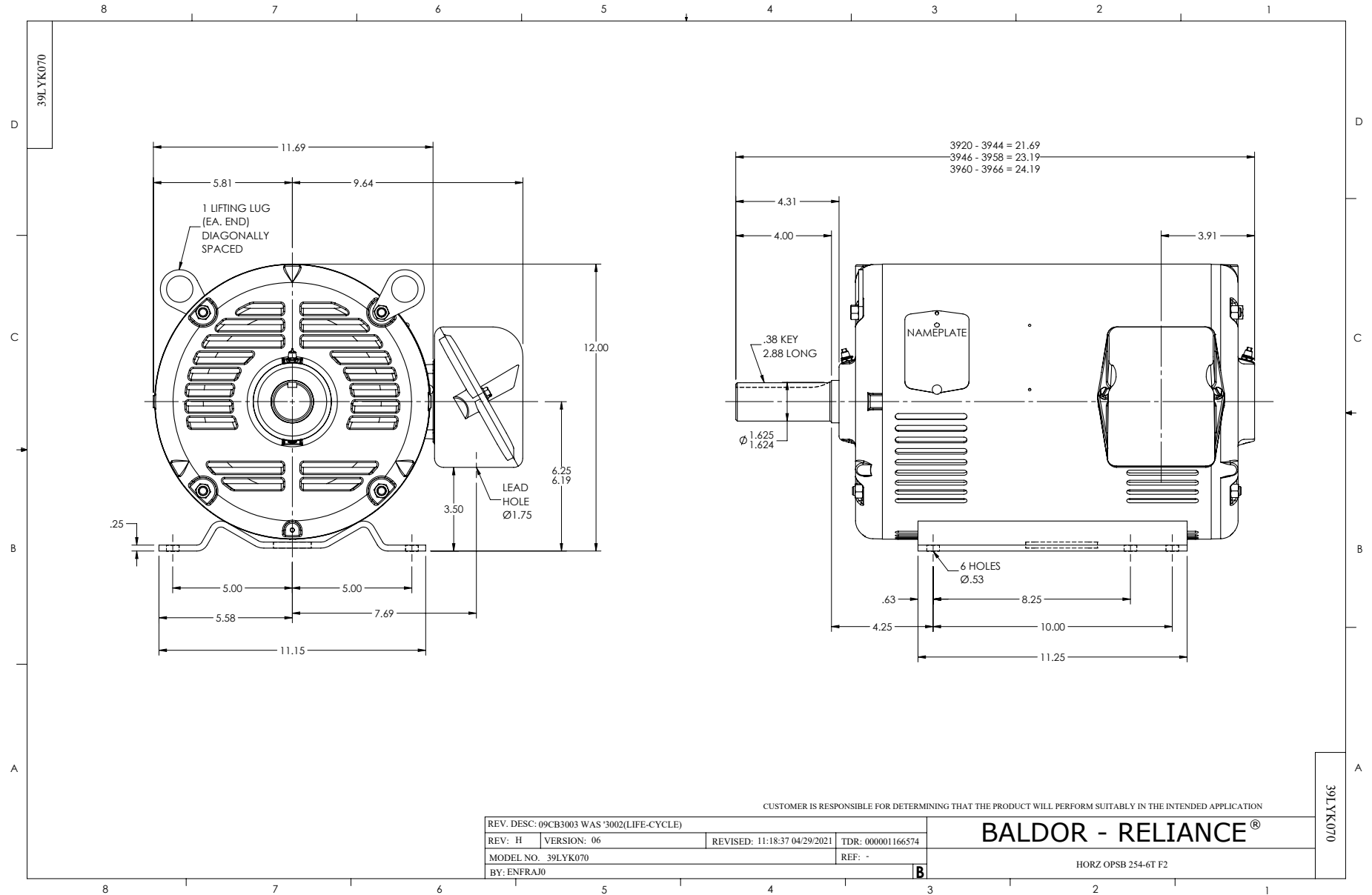
| <b>Winding:</b> 39WGX981-R001 |                        | <b>Type:</b> 3948M         |   | <b>Enclosure:</b> OPSB |  |
|-------------------------------|------------------------|----------------------------|---|------------------------|--|
| <b>Nameplate Data</b>         |                        |                            | <b>200 V, 60 Hz:<br/>Single Voltage Motor</b> |                        |  |
| <b>Rated Output (HP)</b>      | 20                     | <b>Full Load Torque</b>    | 59.8 LB-FT                                    |                        |  |
| <b>Volts</b>                  | 200                    | <b>Start Configuration</b> | direct on line                                |                        |  |
| <b>Full Load Amps</b>         | 55                     | <b>Breakdown Torque</b>    | 182 LB-FT                                     |                        |  |
| <b>R.P.M.</b>                 | 1765                   | <b>Pull-up Torque</b>      | 76.1 LB-FT                                    |                        |  |
| <b>Hz</b>                     | 60 <b>Phase</b>        | 3                          | <b>Locked-rotor Torque</b>                    | 109 LB-FT              |  |
| <b>NEMA Design Code</b>       | A <b>KVA Code</b>      | G                          | <b>Starting Current</b>                       | 350 A                  |  |
| <b>Service Factor (S.F.)</b>  | 1.15                   |                            | <b>No-load Current</b>                        | 19.6 A                 |  |
| <b>NEMA Nom. Eff.</b>         | 93 <b>Power Factor</b> | 85                         | <b>Line-line Res. @ 25°C</b>                  | 0.0886 Ω               |  |
| <b>Rating - Duty</b>          | 40C AMB-CONT           |                            | <b>Temp. Rise @ Rated Load</b>                | 37°C                   |  |
| <b>S.F. Amps</b>              |                        |                            | <b>Temp. Rise @ S.F. Load</b>                 | 46°C                   |  |
|                               |                        |                            | <b>Locked-rotor Power Factor</b>              | 33.3                   |  |
|                               |                        |                            | <b>Rotor inertia</b>                          | 2.1 LB-FT <sup>2</sup> |  |

**Load Characteristics 200 V, 60 Hz, 20 HP**

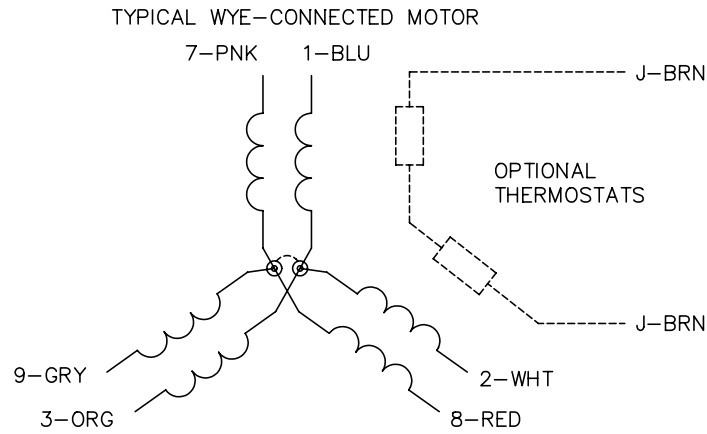
| <b>% of Rated Load</b> | <b>25</b> | <b>50</b> | <b>75</b> | <b>100</b> | <b>125</b> | <b>150</b> | <b>S.F.</b> |
|------------------------|-----------|-----------|-----------|------------|------------|------------|-------------|
| <b>Power Factor</b>    | 51        | 73        | 82        | 85         | 87         | 87         | 86          |
| <b>Efficiency</b>      | 90.5      | 93.3      | 93.5      | 93.1       | 92.1       | 90.8       | 92.5        |
| <b>Speed</b>           | 1792      | 1785      | 1776      | 1767       | 1757       | 1745       | 1761        |
| <b>Line amperes</b>    | 23.5      | 31.7      | 42.4      | 54.5       | 67.5       | 81.9       | 62.3        |

Performance Graph at 200V, 60Hz, 20.0HP Typical performance - Not guaranteed values

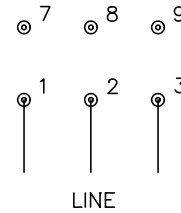




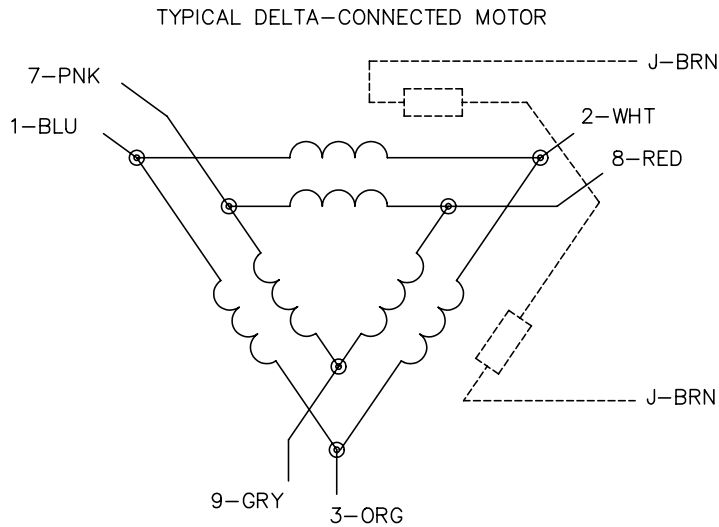
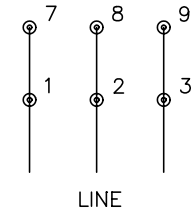
CD0695



START CONNECTION



RUN CONNECTION



NOTES:

1. MOTOR MAY BE WYE CONNECTED OR DELTA CONNECTED.
2. INTERCHANGE ANY TWO LINE LEADS TO REVERSE ROTATION.
3. OPTIONAL THERMOSTATS ARE PROVIDED WHEN SPECIFIED.
4. ACTUAL NUMBER OF INTERNAL PARALLEL CIRCUITS MAY VARY.
5. LEAD COLORS ARE OPTIONAL. LEADS MUST ALWAYS BE NUMBERED AS SHOWN.

REV. DESC: REVISE TO SHOW OPTIONAL COLORS

REV. LTR: C BY: JLP

REVISED: 01/21/99 3:19

TDR: 0171435

9690D0

FILE: AAA00005151

MDL: -

MTL: -

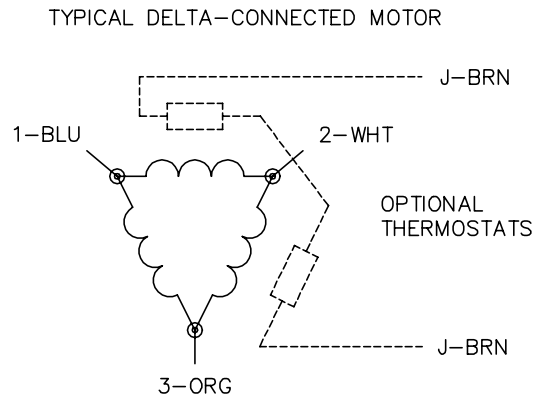
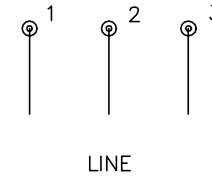
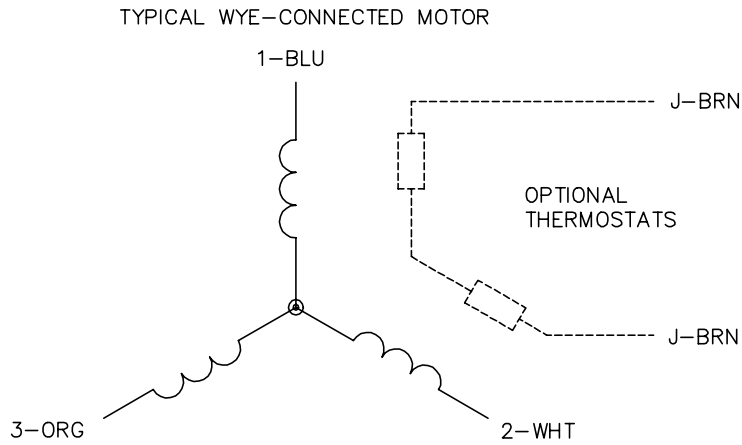
**BALDOR ELECTRIC Co.**

3PH, SV, 6 LEADS, PART WINDING START

CD0695



CD0006



NOTES:

1. THREE LEAD MOTOR MAY BE EITHER WYE CONNECTED OR DELTA CONNECTED.
2. INTERCHANGE ANY TWO LINE LEADS TO REVERSE ROTATION.
3. OPTIONAL THERMOSTATS ARE PROVIDED WHEN SPECIFIED.
4. ACTUAL NUMBER OF INTERNAL PARALLEL CIRCUITS MAY VARY.
5. LEAD COLORS ARE OPTIONAL. LEADS MUST BE NUMBERED AS SHOWN.

CD0006

|                                   |                              |                   |
|-----------------------------------|------------------------------|-------------------|
| REV. DESC: ADD CLASS CONN00000007 |                              |                   |
| REV. LTR: E                       | VERSION: 01                  | TDR: 000001099922 |
| FILE: \AAA\00005\141              | REVISED: 10:24:49 02/19/2019 | BY: ENBRIRO       |
| MTL: -                            | © □                          |                   |

**BALDOR - RELIANCE®**

3PH, SV, 3 LEADS, WYE OR DELTA CONNECTED

SH 1 of 1