

**BALDOR® • RELIANCE** 

**Product Information Packet**

**EHM2539T**

**40HP, 1770RPM, 3PH, 60HZ, 324T, 4064M, OPSB, F1**

Part Detail							
Revision:	J	Status:	PRD/A	Change #:		Proprietary:	No
Type:	AC	Elec. Spec:	40WGX166	CD Diagram:	CD0005	Mfg Plant:	
Mech. Spec:	40E329	Layout:	40LYE329	Poles:	04	Created Date:	09-30-2013
Base:	RG	Eff. Date:	02-11-2021	Leads:	9#8		

Specs			
Catalog Number:	EHM2539T	Inverter Code:	Inverter Ready
Product Complexity Level:	Standard	KVA Code:	H
Enclosure:	OPSB	Lifting Lugs:	Standard Lifting Lugs
Frame:	324T	Locked Bearing Indicator:	No Locked Bearing
Frame Material:	Steel	Motor Lead Quantity/Wire Size:	9 @ 8 AWG
Output @ Frequency:	40.000 HP @ 60 HZ	Motor Lead Exit:	Ko Box
Synchronous Speed @ Frequency:	1800 RPM @ 60 HZ	Motor Lead Termination:	Flying Leads
Voltage @ Frequency:	230.0 V @ 60 HZ	Motor Type:	4064M
	460.0 V @ 60 HZ	Mounting Arrangement:	F1
Agency Approvals:	CSA	Power Factor:	82
	UR	Product Family:	General Purpose
Auxillary Box:	No Auxillary Box	Pulley End Bearing Type:	Ball
Auxillary Box Lead Termination:	None	Pulley Face Code:	Standard
Base Indicator:	Rigid	Pulley Shaft Indicator:	Standard
Bearing Grease Type:	Polyrex EM (-20F +300F)	Rodent Screen:	None
Blower:	None	Shaft Extension Location:	Pulley End
Current @ Voltage:	49.000 A @ 460.0 V	Shaft Ground Indicator:	Mounting Provisions Only
	98.000 A @ 230.0 V	Shaft Rotation:	Reversible

	99.000 A @ 208.0 V	<b>Shaft Slinger Indicator:</b>	No Slinger
<b>Design Code:</b>	A	<b>Speed Code:</b>	Single Speed
<b>Drip Cover:</b>	No Drip Cover	<b>Motor Standards:</b>	NEMA
<b>Duty Rating:</b>	CONT	<b>Starting Method:</b>	Direct on line
<b>Feedback Device:</b>	NO FEEDBACK	<b>Thermal Device - Bearing:</b>	None
<b>Front Face Code:</b>	Standard	<b>Thermal Device - Winding:</b>	None
<b>Front Shaft Indicator:</b>	None	<b>Vibration Sensor Indicator:</b>	No Vibration Sensor
<b>Heater Indicator:</b>	No Heater	<b>Winding Thermal 1:</b>	None
<b>Insulation Class:</b>	F	<b>Winding Thermal 2:</b>	None

Nameplate NP2094E06B03	
CAT.NO.	EHM2539T
SPEC.	40E329X166G1
HP	40
VOLTS	230/460
AMPS	98/49
RPM	1770
FRAME	324T
	HZ 60
	PH 3
SER.F.	1.15
	CODE H
	DES A
	CL F
NEMA-NOM-EFF	94.1
	PF 82
RATING	40C AMB-CONT
CC	010A
	USABLE AT 208V 99
DE	6312
	ODE 6309
AUTO	
	MANUAL
	NONE
ENCL	OPSB
	SN
BLANK	

**AC Induction Motor Performance Data**

Record # 31313

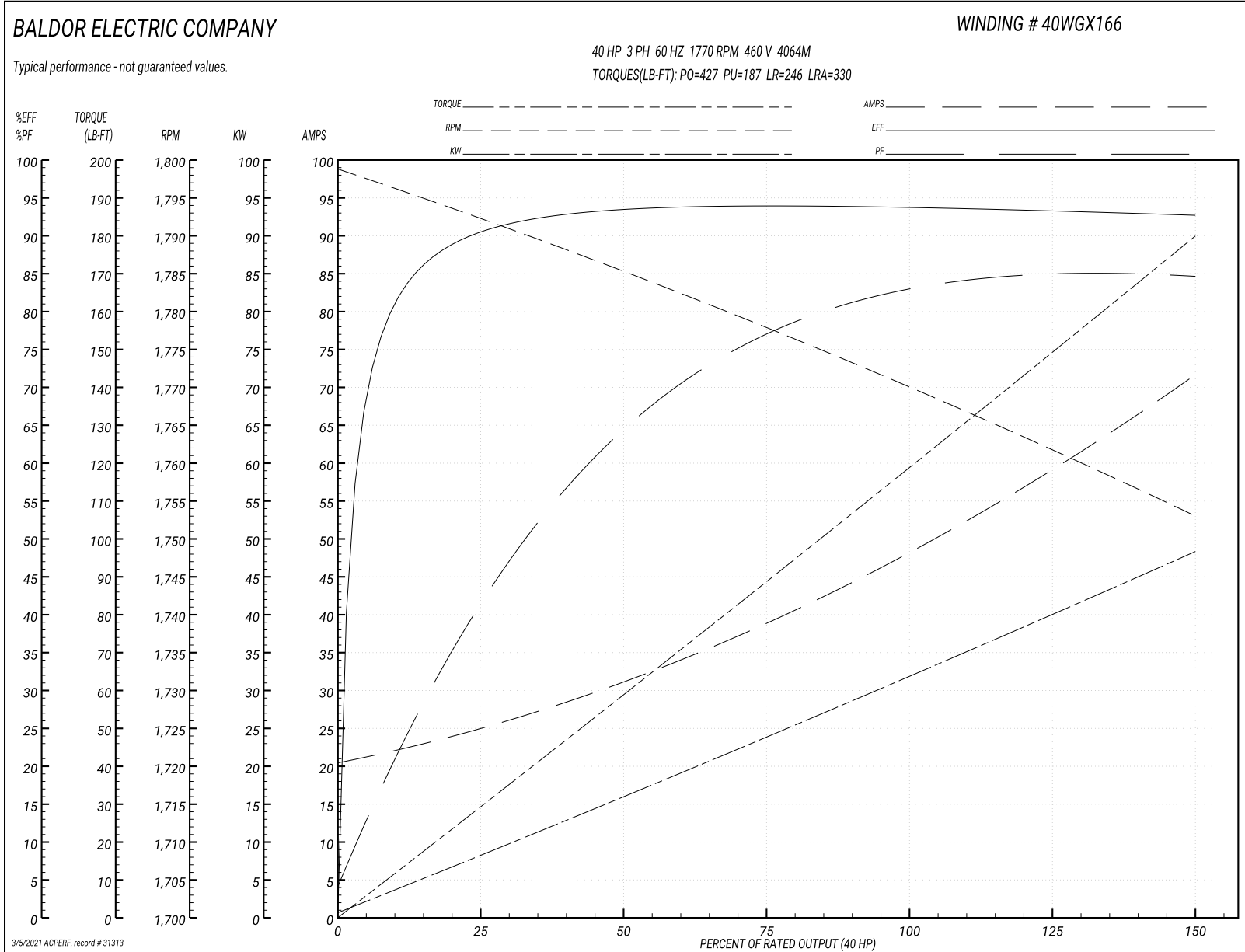
Typical performance - not guaranteed values

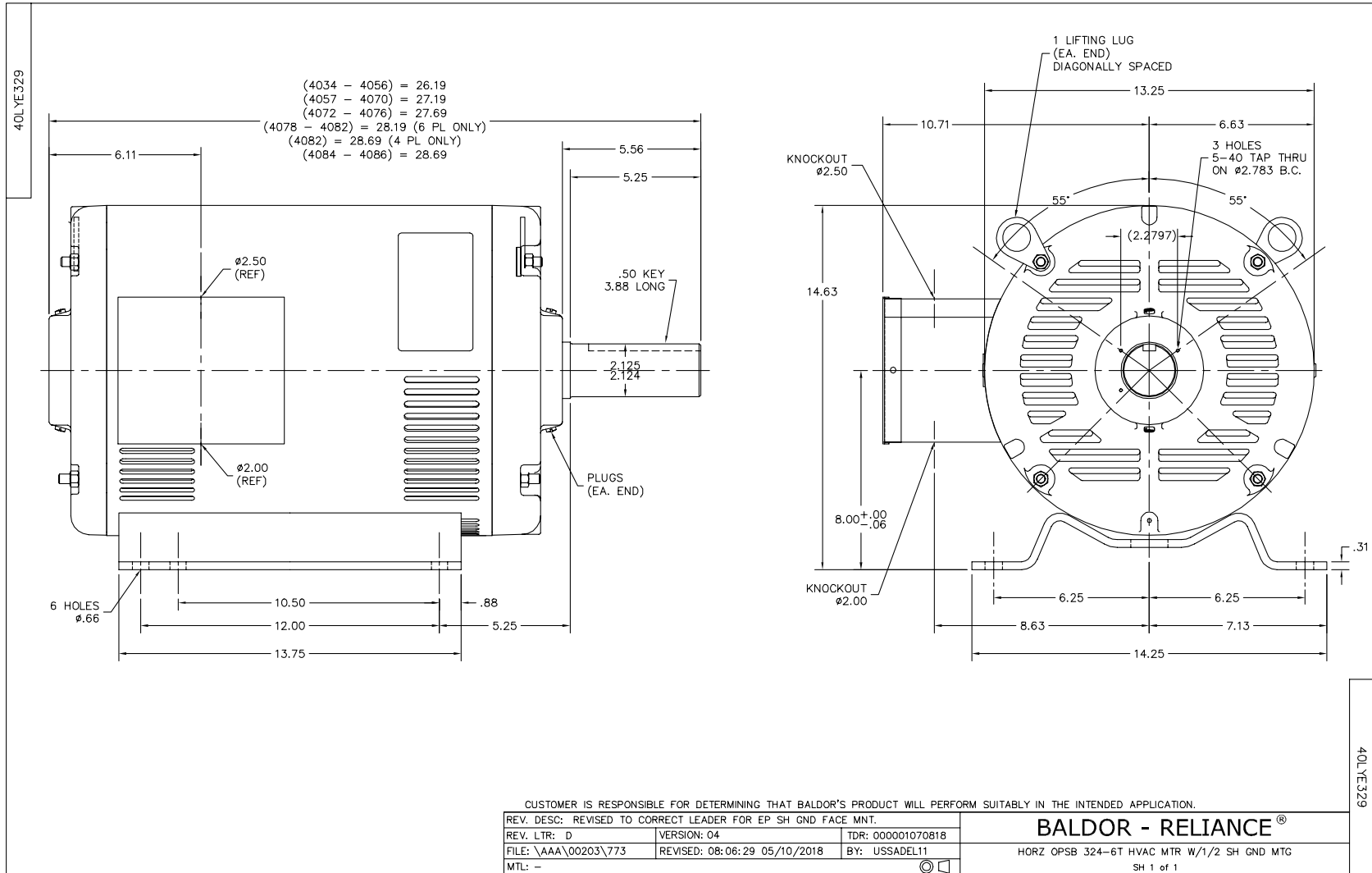
<b>Winding: 40WGX166-R002</b>		<b>Type: 4064M</b>		<b>Enclosure: OPSB</b>	
<b>Nameplate Data</b>			<b>460 V, 60 Hz: High Voltage Connection</b>		
<b>Rated Output (HP)</b>	40	<b>Full Load Torque</b>	119 LB-FT		
<b>Volts</b>	230/460	<b>Start Configuration</b>	direct on line		
<b>Full Load Amps</b>	98/49	<b>Breakdown Torque</b>	427 LB-FT		
<b>R.P.M.</b>	1770	<b>Pull-up Torque</b>	187 LB-FT		
<b>Hz</b>	60 Phase	<b>Locked-rotor Torque</b>	246 LB-FT		
<b>NEMA Design Code</b>	A KVA Code	<b>Starting Current</b>	330 A		
<b>Service Factor (S.F.)</b>	1.15	<b>No-load Current</b>	21.1 A		
<b>NEMA Nom. Eff.</b>	94.1 Power Factor	<b>Line-line Res. @ 25°C</b>	0.16236 Ω		
<b>Rating - Duty</b>	40C AMB-CONT	<b>Temp. Rise @ Rated Load</b>	41°C		
<b>S.F. Amps</b>		<b>Temp. Rise @ S.F. Load</b>	51°C		
		<b>Locked-rotor Power Factor</b>	31.9		
		<b>Rotor inertia</b>	5.09 LB-FT <sup>2</sup>		

**Load Characteristics 460 V, 60 Hz, 40 HP**

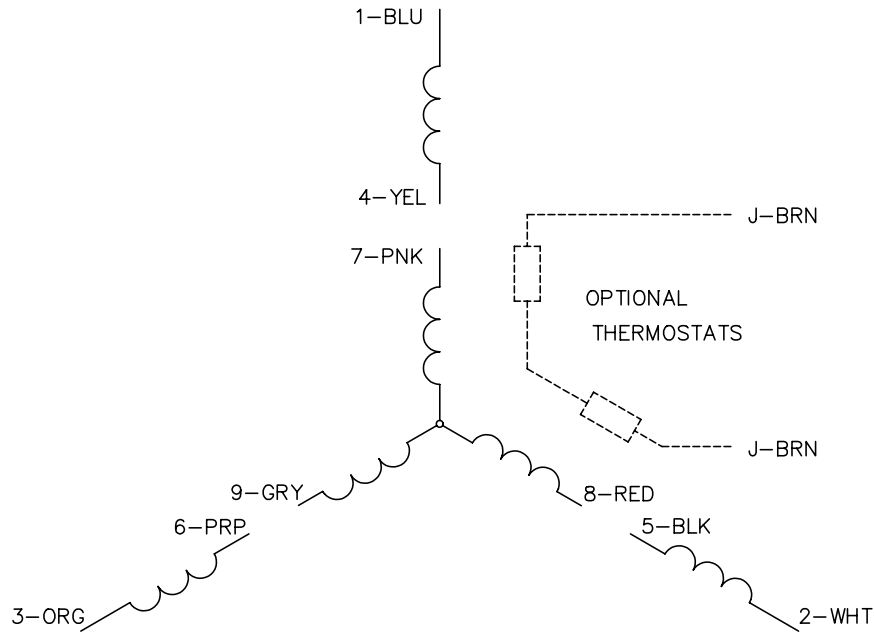
<b>% of Rated Load</b>	<b>25</b>	<b>50</b>	<b>75</b>	<b>100</b>	<b>125</b>	<b>150</b>	<b>S.F.</b>
<b>Power Factor</b>	43	65	76	82	85	85	84
<b>Efficiency</b>	91.1	94	94.5	94.2	93.6	92.8	93.8
<b>Speed</b>	1792.4	1785	1777.8	1770.2	1762.1	1752.8	1765
<b>Line amperes</b>	24.1	30.7	39.2	48.7	59.3	71.3	55.1

Performance Graph at 460V, 60Hz, 40.0HP Typical performance - Not guaranteed values





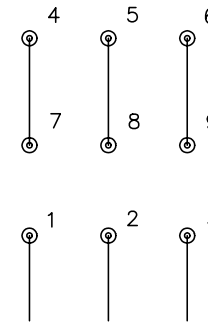
CD0005



LOW VOLTAGE  
(2Y)



HIGH VOLTAGE  
(1Y)



NOTES:

1. INTERCHANGE ANY TWO LINE LEADS TO REVERSE ROTATION.
2. OPTIONAL THERMOSTATS ARE PROVIDED WHEN SPECIFIED.
3. ACTUAL NUMBER OF INTERNAL PARALLEL CIRCUITS MAY BE A MULTIPLE OF THOSE SHOWN ABOVE.
4. LEAD COLORS ARE OPTIONAL. LEADS MUST ALWAYS BE NUMBERED AS SHOWN.

REV. DESC: REVISE TO SHOW OPTIONAL COLORS			
REV. LTR: E	BY: JLP	REVISED: 01/19/99 10:15	TDR: 0171435
90000		FILE: AAA00005140	MDL: -
		MTL: -	

**BALDOR ELECTRIC Co.**

3PH, DV, 9 LEADS

CD0005