

**BALDOR® • RELIANCE** 

**Product Information Packet**

**EJMM3309T**

**5HP,1160RPM,3PH,60HZ,215JM,3744M,OPSB,F1**

Part Detail							
Revision:	F	Status:	PRD/A	Change #:		Proprietary:	No
Type:	AC	Elec. Spec:	37WGS521	CD Diagram:	CD0005	Mfg Plant:	
Mech. Spec:	37F696	Layout:	37LYF696	Poles:	06	Created Date:	05-27-2015
Base:	RG	Eff. Date:	12-04-2020	Leads:	9#14		

Specs			
Catalog Number:	EJMM3309T	Heater Indicator:	No Heater
Enclosure:	OPSB	Insulation Class:	F
Frame:	215JM	Inverter Code:	Inverter Ready
Frame Material:	Steel	KVA Code:	K
Output @ Frequency:	5.000 HP @ 60 HZ	Lifting Lugs:	Standard Lifting Lugs
Synchronous Speed @ Frequency:	1200 RPM @ 60 HZ	Locked Bearing Indicator:	Locked Bearing
Voltage @ Frequency:	460.0 V @ 60 HZ	Motor Lead Quantity/Wire Size:	9 @ 14 AWG
	230.0 V @ 60 HZ	Motor Lead Exit:	Ko Box
XP Class and Group:	None	Motor Lead Termination:	Flying Leads
XP Division:	Not Applicable	Motor Type:	3744M
Agency Approvals:	UR	Mounting Arrangement:	F1
	CSA EEV	Power Factor:	71
	CSA	Product Family:	General Purpose
Auxillary Box:	No Auxillary Box	Pulley End Bearing Type:	Ball
Auxillary Box Lead Termination:	None	Pulley Face Code:	C-Face
Base Indicator:	Rigid	Pulley Shaft Indicator:	Tapped & Key
Bearing Grease Type:	Polyrex EM (-20F +300F)	Rodent Screen:	Included
Blower:	None	Shaft Extension Location:	Pulley End

<b>Current @ Voltage:</b>	14.800 A @ 230.0 V	<b>Shaft Ground Indicator:</b>	No Shaft Grounding
	15.200 A @ 208.0 V	<b>Shaft Rotation:</b>	Reversible
	7.400 A @ 460.0 V	<b>Shaft Slinger Indicator:</b>	Shaft Slinger
<b>Design Code:</b>	A	<b>Speed Code:</b>	Single Speed
<b>Drip Cover:</b>	No Drip Cover	<b>Motor Standards:</b>	NEMA
<b>Duty Rating:</b>	CONT	<b>Starting Method:</b>	Direct on line
<b>Electrically Isolated Bearing:</b>	Not Electrically Isolated	<b>Thermal Device - Bearing:</b>	None
<b>Feedback Device:</b>	NO FEEDBACK	<b>Thermal Device - Winding:</b>	None
<b>Front Face Code:</b>	Standard	<b>Vibration Sensor Indicator:</b>	No Vibration Sensor
<b>Front Shaft Indicator:</b>	None	<b>Winding Thermal 1:</b>	None
		<b>Winding Thermal 2:</b>	None

Nameplate NP3553LUA

CAT.NO.	EJMM3309T							
SPEC.	37F696S521G2							
HP	5							
VOLTS	230/460							
AMPS	14.8/7.4							
RPM	1160							
FRAME	215JM		HZ	60		PH	3	
SF	1.15		CODE	K	DES	A	CLASS	F
NEMA NOM. EFF	89.5		PF	71				
RATING	40C AMB-CONT							
CC	010A		USABLE AT 208V			15.2		
DE	6309		ODE	6206				
ENCL	OPSB		SN					
VPWM INVERTER READY								
CT30-60(2:1) VT3-60(20:1)								
USABLE AT	50Hz 5HP 190/380V 17.2/8.6A						SF1.0	

**AC Induction Motor Performance Data**

Record # 53393

Typical performance - not guaranteed values

<b>Winding: 37WGS521-R008</b>		<b>Type: 3744M</b>		<b>Enclosure: OPSB</b>	
<b>Nameplate Data</b>			<b>460 V, 60 Hz: High Voltage Connection</b>		
<b>Rated Output (HP)</b>	5	<b>Full Load Torque</b>	22.5 LB-FT		
<b>Volts</b>	230/460	<b>Start Configuration</b>	direct on line		
<b>Full Load Amps</b>	14.8/7.4	<b>Breakdown Torque</b>	77.9 LB-FT		
<b>R.P.M.</b>	1160	<b>Pull-up Torque</b>	47.4 LB-FT		
<b>Hz</b>	60 <b>Phase</b>	3	<b>Locked-rotor Torque</b>	54.8 LB-FT	
<b>NEMA Design Code</b>	A <b>KVA Code</b>	K	<b>Starting Current</b>	53 A	
<b>Service Factor (S.F.)</b>	1.15	<b>No-load Current</b>	3.84 A		
<b>NEMA Nom. Eff.</b>	89.5 <b>Power Factor</b>	71	<b>Line-line Res. @ 25°C</b>	1.7514 Ω	
<b>Rating - Duty</b>	40C AMB-CONT	<b>Temp. Rise @ Rated Load</b>	33°C		
<b>S.F. Amps</b>		<b>Temp. Rise @ S.F. Load</b>	41°C		
		<b>Locked-rotor Power Factor</b>	23		
		<b>Rotor inertia</b>	1.09 LB-FT <sup>2</sup>		

**Load Characteristics 460 V, 60 Hz, 5 HP**

<b>% of Rated Load</b>	<b>25</b>	<b>50</b>	<b>75</b>	<b>100</b>	<b>125</b>	<b>150</b>	<b>S.F.</b>
<b>Power Factor</b>	33	53	65	71	74	76	73
<b>Efficiency</b>	84.5	89.4	90.1	89.5	88.3	86.5	88.8
<b>Speed</b>	1191.9	1183.8	1173.7	1164.6	1153.5	1139.2	1158
<b>Line amperes</b>	4.14	4.95	6.08	7.36	8.92	10.7	8.3

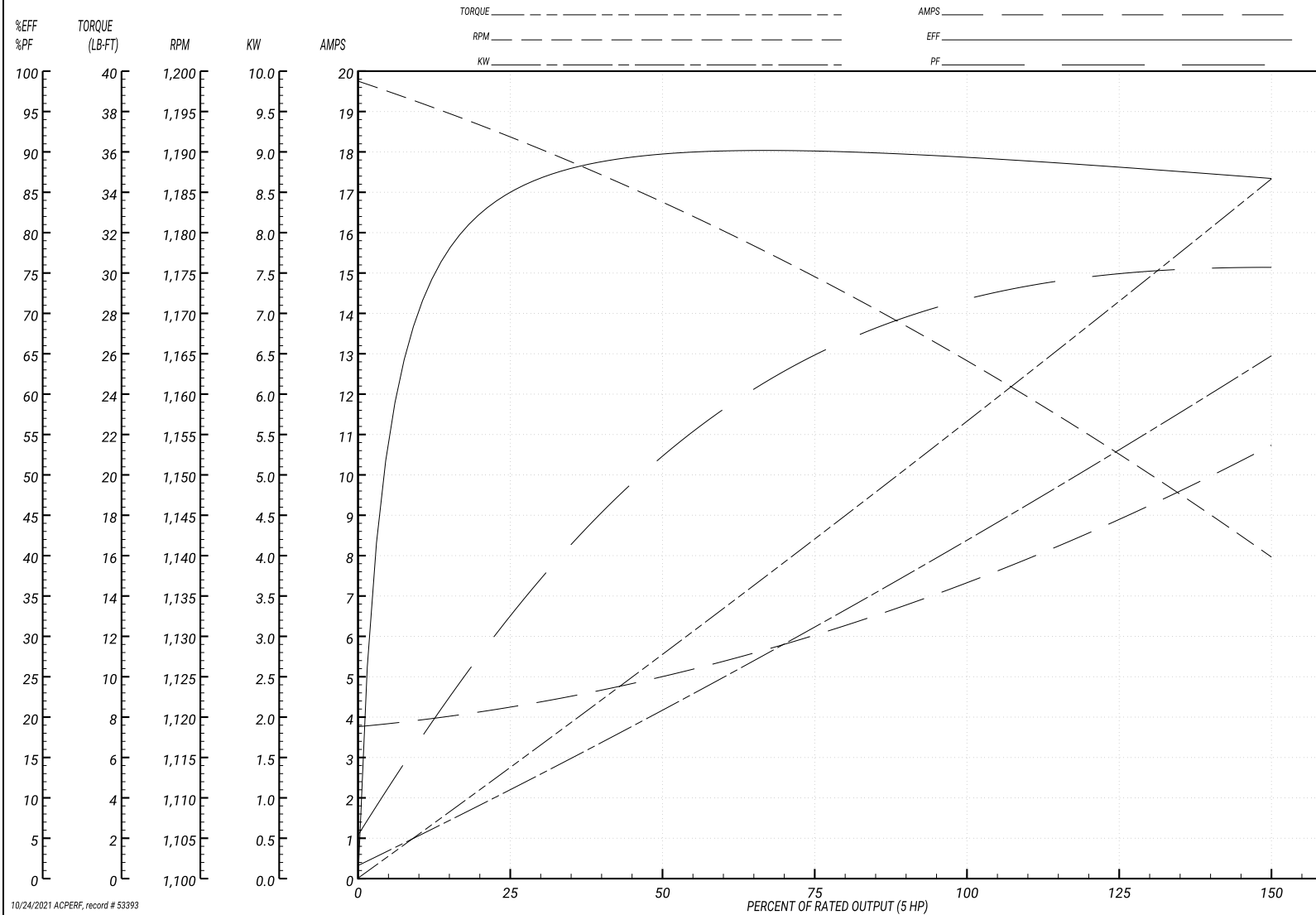
Performance Graph at 460V, 60Hz, 5.0HP Typical performance - Not guaranteed values

**BALDOR ELECTRIC COMPANY**

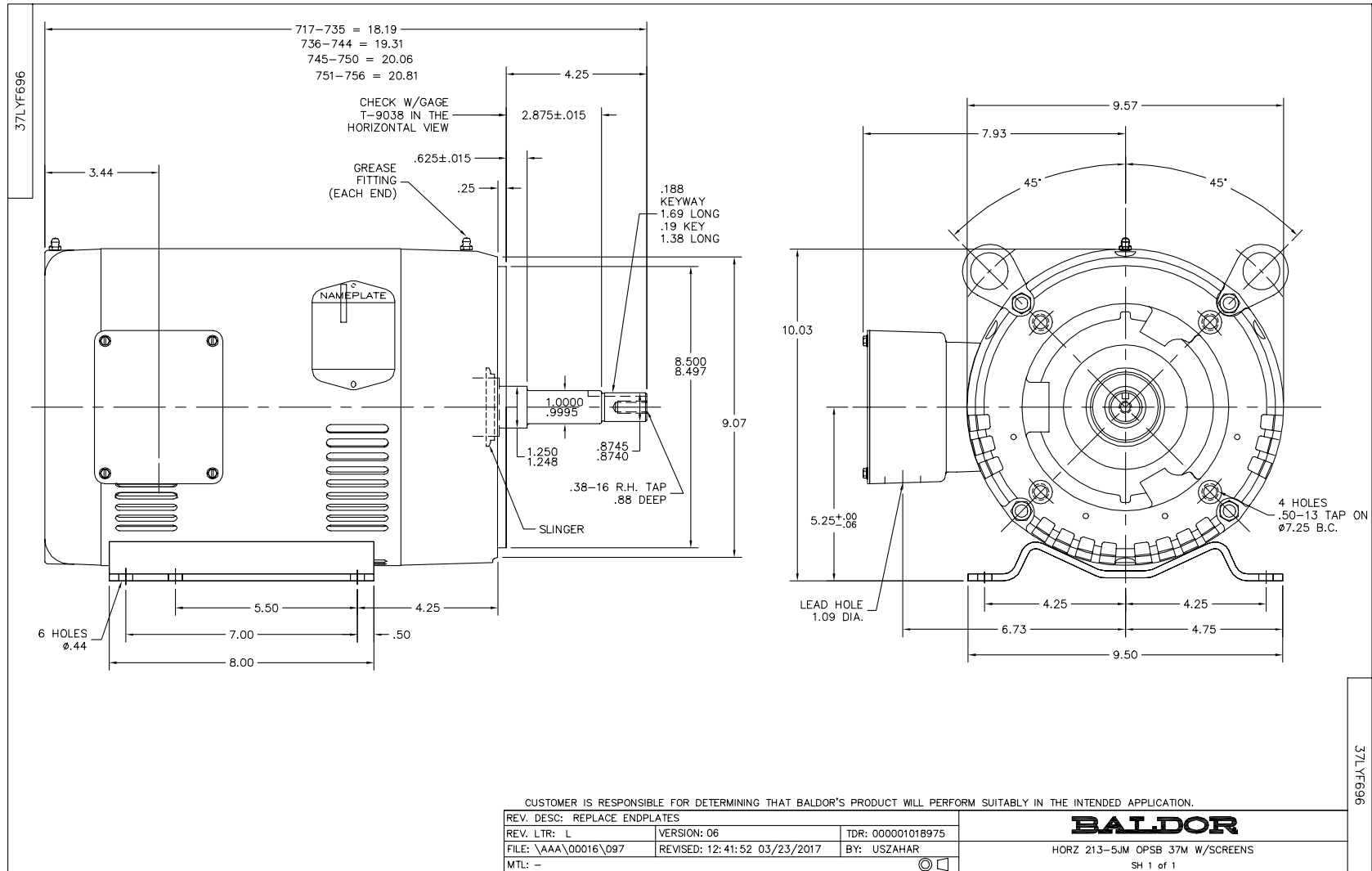
WINDING # 37WGS521

Typical performance - not guaranteed values.

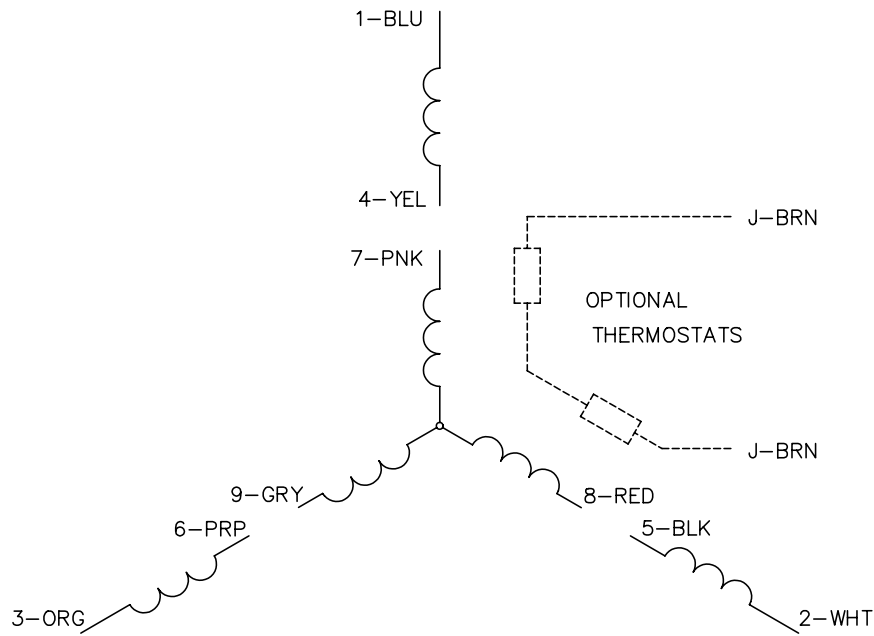
5 HP 3 PH 60 HZ 1160 RPM 460 V 3744M  
 TORQUES(LB-FT): PO=77.9 PU=47.4 LR=54.8 LRA=53



10/24/2021 ACPERF, record # 53393



CD0005

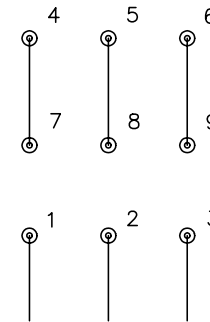


LOW VOLTAGE  
(2Y)



LINE

HIGH VOLTAGE  
(1Y)



LINE

NOTES:

1. INTERCHANGE ANY TWO LINE LEADS TO REVERSE ROTATION.
2. OPTIONAL THERMOSTATS ARE PROVIDED WHEN SPECIFIED.
3. ACTUAL NUMBER OF INTERNAL PARALLEL CIRCUITS MAY BE A MULTIPLE OF THOSE SHOWN ABOVE.
4. LEAD COLORS ARE OPTIONAL. LEADS MUST ALWAYS BE NUMBERED AS SHOWN.

REV. DESC: REVISE TO SHOW OPTIONAL COLORS			
REV. LTR: E	BY: JLP	REVISED: 01/19/99 10:15	TDR: 0171435
900000		FILE: AAA00005140	MDL: -
		MTL: -	

**BALDOR ELECTRIC Co.**

3PH, DV, 9 LEADS

CD0005